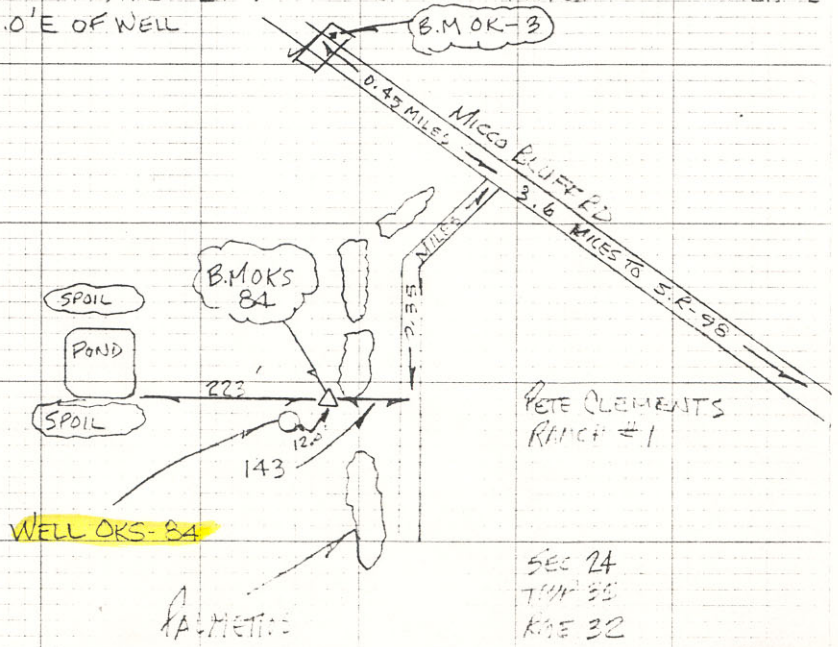


COMMENTS

204

B.M. OKS-84 IS 1 1/2" I. PIPE W/ SEAM & ALUM. DISK SET 1.0' BELOW GRID TO REACH FROM U.S. HIGHWAY 98 AND MICCO BLUFF RD GO N.W. ON MICCO BLUFF RD 3.6 MILES TO A RANCH GATE ON LEFT (SOUTHERLY) SIDE OF RD, THE GO THROUGH GATE AND CONTINUE ON RD 0.35 MILES TO STATION LOCATION, STATION IS 143.0 W. OF THE @ OF RD, 223' E OF THE SE COR OF A SQ. POND, AND IS ON THE S.S.W. SIDE OF A PATCH OF PALMETTO. BM IS 12.0' E OF WELL



84