

NOT TO SCALE

ROGER E. MAYFIELD, P.E.
 FL #46092
 REM ASSOCIATES, INC.
 CERTIFICATE OF AUTHORIZATION #27397
 4270 ALOMA AVE #124-16J
 WINTER PARK, FLORIDA 32792

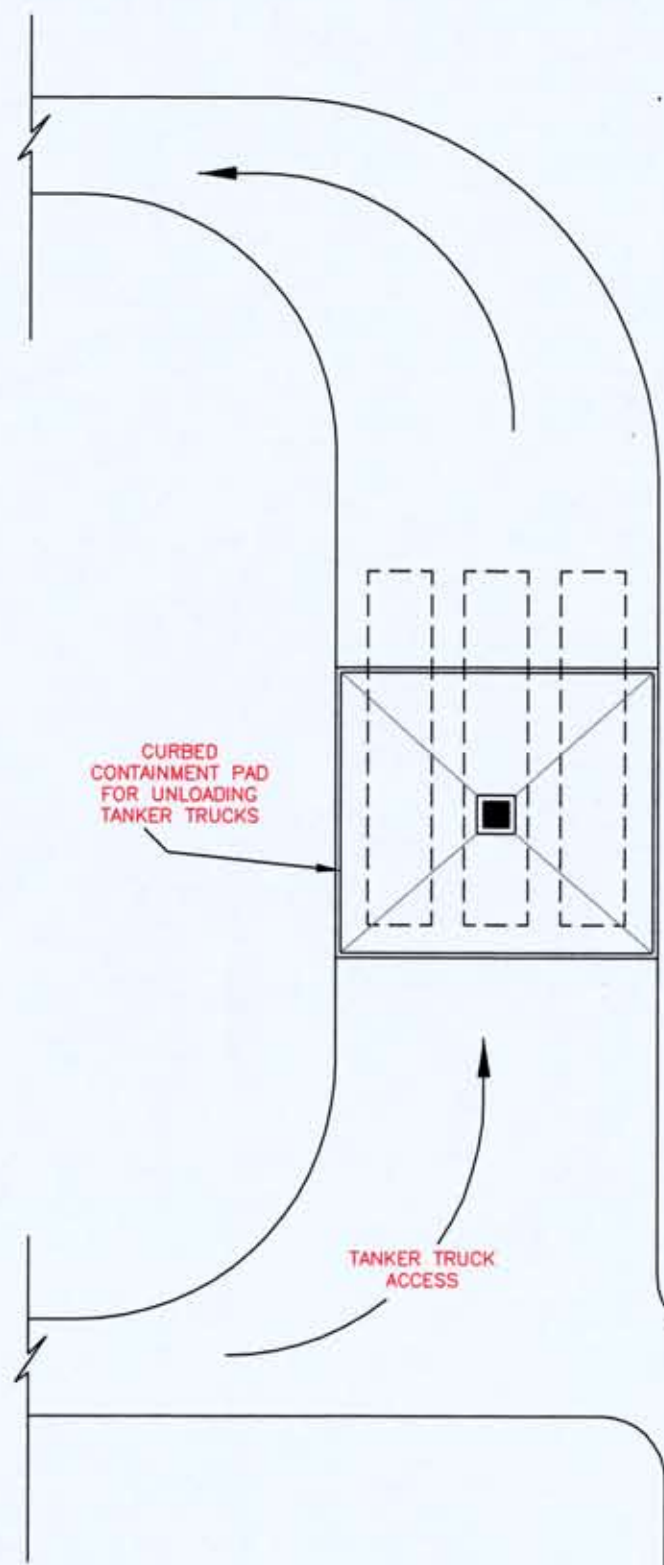
[Handwritten signature]
 12/17/08

[Professional Engineer Seal: ROGER E. MAYFIELD, P.E., STATE OF FLORIDA, PROFESSIONAL ENGINEER]

1 2 3 4 5 6 7 8 9 10



A
B
C
D
E
F



CURBED CONTAINMENT PAD FOR UNLOADING TANKER TRUCKS

TANKER TRUCK ACCESS

LEACHATE GRIT REMOVAL SUMP

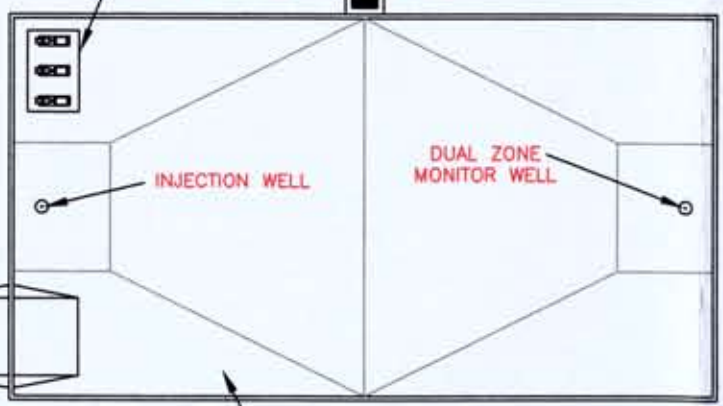
LEACHATE SUMP PUMPS (ONE FUTURE)

INJECTION WELL FEED PUMPS (ONE FUTURE)

STORMWATER SUMP

FOUL AIR BLOWERS

ELECTRICAL & CONTROL BUILDING



WELL SLAB ACCESS

INJECTION WELL

DUAL ZONE MONITOR WELL

WELL CONTAINMENT SLAB W/ CURB



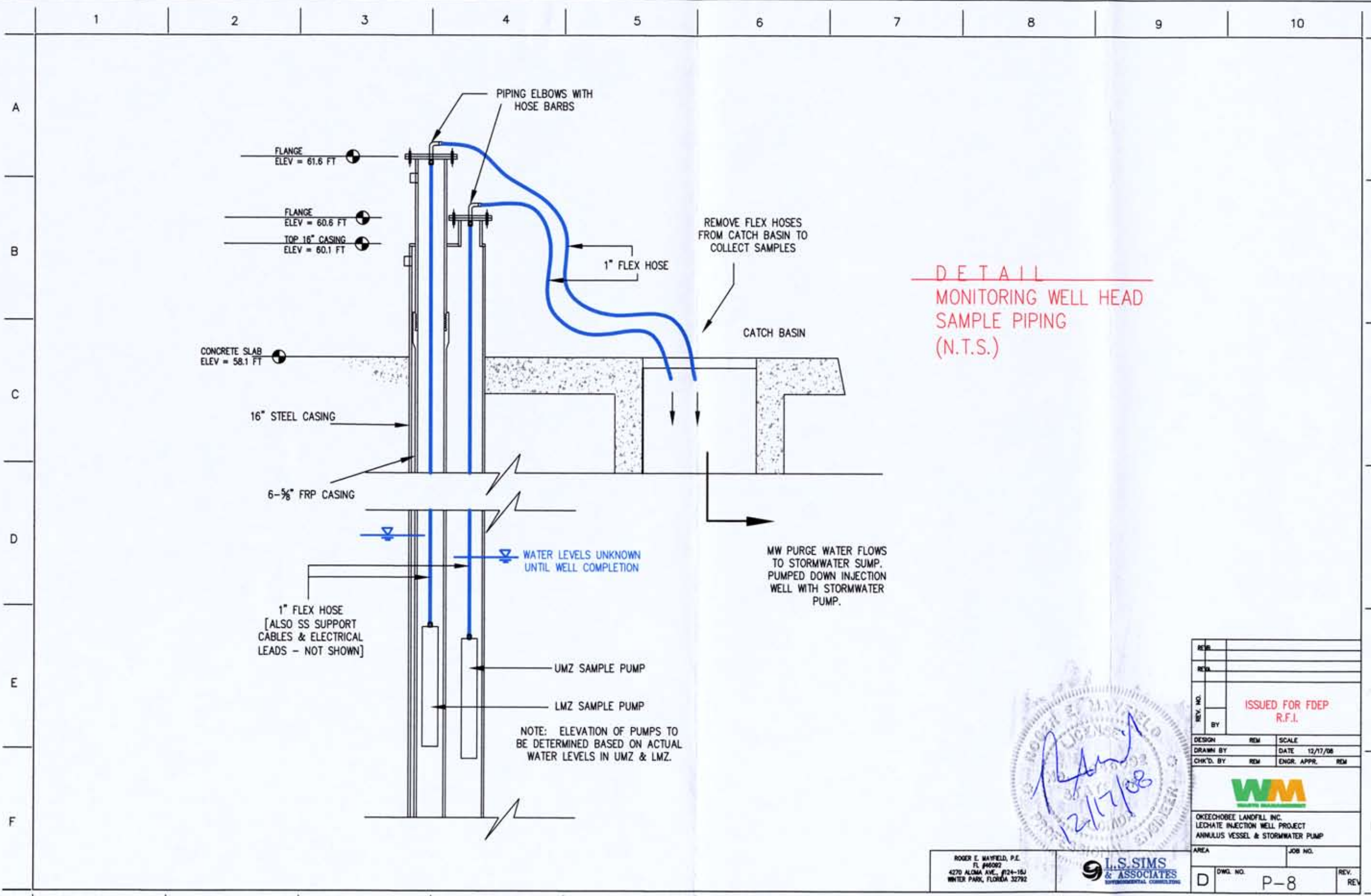
REV. NO.	DATE	REV. BY
DESIGN	REV	SCALE
DRAWN BY	REV	DATE
CHK'D. BY	CHECKED	ENGR. APPR.

DRAWING TITLE		FIGURE 8	
		OLI LEACHATE DISPOSAL	
		INJECTION WELL FACILITY LAYOUT	
AREA	JOB NO.		
D	DWG. NO.	REV.	

ROGER E. MARFIELD, P.E.
FL #40092
REM ASSOCIATES, INC.
CERTIFICATE OF AUTHORIZATION #27397
4270 ALOMA AVE #124-183
WINTER PARK, FLORIDA 32782



1 2 3 4 5 6 7 8 9 10



DETAIL
MONITORING WELL HEAD
SAMPLE PIPING
(N.T.S.)



REV.			
REV.			
REV. NO.	ISSUED FOR FDEP R.F.I.		
BY			
DESIGN	REM	SCALE	
DRAWN BY		DATE	12/17/08
CHK'D. BY	REM	ENGR. APPR.	REM
OKEECHOBEE LANDFILL INC. LEACHATE INJECTION WELL PROJECT ANNULUS VESSEL & STORMWATER PUMP			
AREA	JOB NO.		
D	DWG. NO.	P-8	REV.

ROGER E. MAYFIELD, P.E.
FL #49592
4270 ALOMA AVE., #124-15J
WINTER PARK, FLORIDA 32782

L.S. SIMS & ASSOCIATES
ENVIRONMENTAL CONSULTING