



**Field Services
Construction
Preliminary Data**

**Wadeview Park
Orlando, Florida**

**Aquifer System Monitor Wells:
Floridan: OR-0827
Intermediate: OR-0824
Lower Floridan: OR-0829**

Abandoned Floridan/Testhole OR0825

SJRWMD Program No. 5111-03901

November 2, 2004

**Division of Ground Water Programs
Department of Resource Management
St. Johns River Water Management District
Palatka, Florida**

*This report was generated for the Division of Ground Water Program's use.
All data, figures, tables and information are provisional*

General Information

Site: Wadeview Park

Access: City of Orlando

Service Request: Brian McGurk Division of Ground Water Programs

Purpose: Ground water model data for Division of Water Supply Management

Data Collection: Laura Nelms

Report: Laura Nelms

Work:

Floridan Monitor Well
Intermediate Monitor Well
Diversified Drilling, Inc.

Geophysical Logs
SJRWMD

Video Logs
Advanced Borehole Services

Notes:

Testhole OR-0825

09/15/03 Drilling operations start. Testhole drilled using mud rotary method. Posthole 4 ft then drill 4-inch diameter test hole to 205 ft bls. Lithologic samples collected during drilling. Ten cores, two Shelby's, and twenty one SPT's taken.

09/17/03 Set 60-feet of 14-inch dia. PVC casing and grout in.

09/18/03 Loss of circulation during drilling at 160 ft bls. Switch to core barrel and core from 160 ft to 193 ft bls. Multiple voids from 190 ft bls to 193 ft, and circulation lost again.

09/22/03 Set 4-inch ID temporary casing to 146 ft bls. Core from 185 ft bls to 204 ft bls. Core parallel original testhole to top of rock. Temporary casing pulled from borehole.

09/26/03 Drill to 204 ft bls, During break out the bit hangs at 65 ft below casing. After retrieval, borehole tag at 65 ft bls. Contractor drills out again to TD and tremie 20 bgs of grout into borehole in an effort to fill voids.

09/29/03 Pit casing has dropped 2-3 ft bls into the previously caved interval. Contractor adds 2 ft of 14-inch PVC to pit casing to bring to landsurface. Area surrounding borehole backfilled and attempt to grout again.

09/30/03 Area surrounding borehole continues to cave.

10/01/03 Testhole OR0825 abandoned using 107 bgs of Portland cement and 6 bgs of holeplug.

Floridan OR-0827

10/02/03 Drilling starts at new location 26 ft northwest of the original testhole. Set 140 ft of 14-inch diameter PVC casing using 80 bgs of Portland cement.

10/03/03 – 10/07/03 Drill to 208 ft bls with 14-inch bit. Circulation lost at 170 ft bls; drilling continues, no return. Set 208 ft of 10-inch diameter PVC casing using 95 bgs of Portland cement.

10/08/03 Drill to 165 ft bls, bit drills through side of casing. Grout and PVC in casing at 155 ft. Casing melted above lost circulation zone.

10/13/03 Drill through melted casing with 8 5/8-inch diameter 20 ft long bit and stabilizer. No grout in casing below 170 ft bls. Casing appears competent below 170 ft.

10/16/03 Circulation lost @ 365 ft bls. 6-inch Casing set and pressure grouted in.

10/22/03 Circulation lost @ 388 ft bls. Drilling continues with no return. Multiple voids and soft drilling to 450 ft bls. Below 450 ft drilling harder to TD 460 ft bls.

10/23/03 Air develop OR0827 and collect Lab Samples.

10/24/03 APT test performed. OR0827 pumped with 7.5 hp submersible pump but terminated after 98.8 minutes due to short in wirng. Recovery started but doesn't record initial recharge. Pumping rate of 110 gpm does not significantly stress the aquifer. Test not repeated.

10/24/03 Well completed with 12-inch steel protective manhole cover, 3-ft by 3-ft concrete pad and survey marker.

11/13/03 Existing wellhead replaced with 24-inch steel protective manhole cover, 3-ft by 3-ft concrete pad and survey marker.

Intermediate OR-0824

10/22/04 Drilling started using mud rotary method to 110 ft bls.

10/23/03 Air develop OR0824 and collect Lab Samples.

10/24/03 APT test performed. OR0824 pumped with 1 hp submersible pump and test completed @ 7.14 gpm for 100 minutes. Well completed with 12-inch steel protective manhole cover, 3-ft by 3-ft concrete pad and survey marker.

11/13/03 Existing wellhead replaced with 24-inch steel protective manhole cover, 3-ft by 3-ft concrete pad and survey marker.

Existing Production Well OR0829

11/13/03 Former production well converted to monitor well.

11/13/03 Existing wellhead cut for a 6X6-inch opening and completed with 24-inch steel protective manhole cover, 3-ft by 3-ft concrete pad and survey marker.

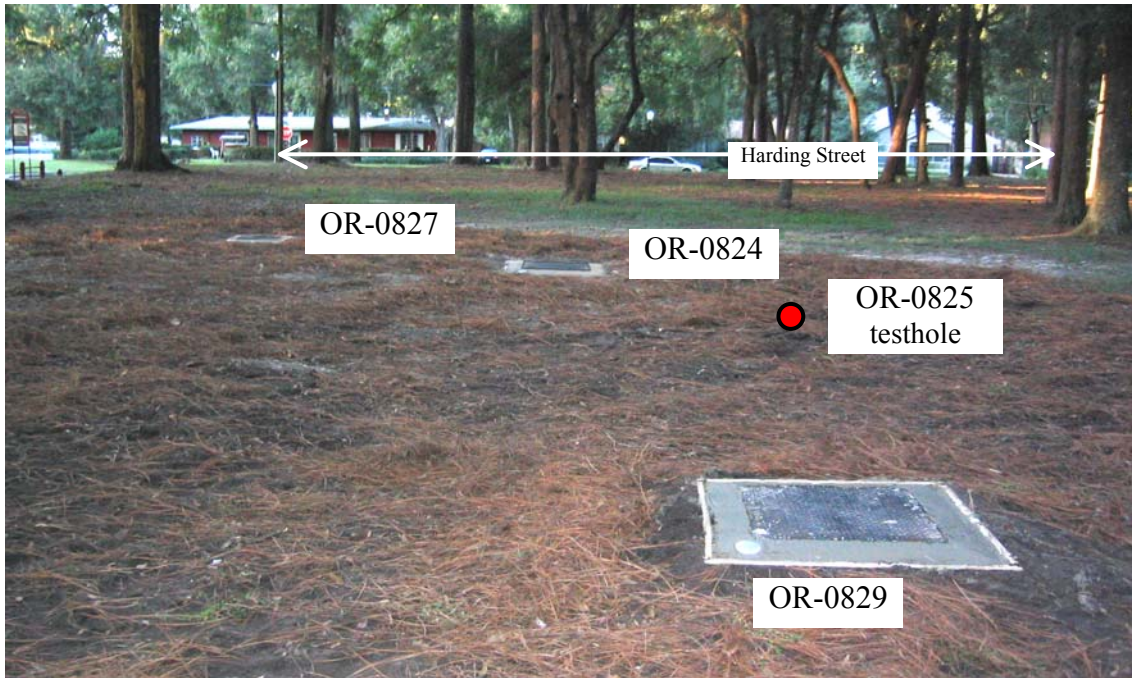
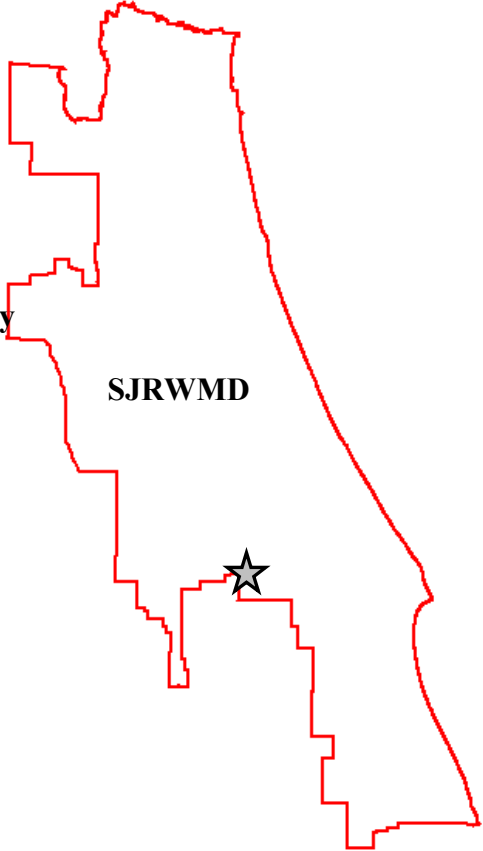
01/21/04 Video Production Well.

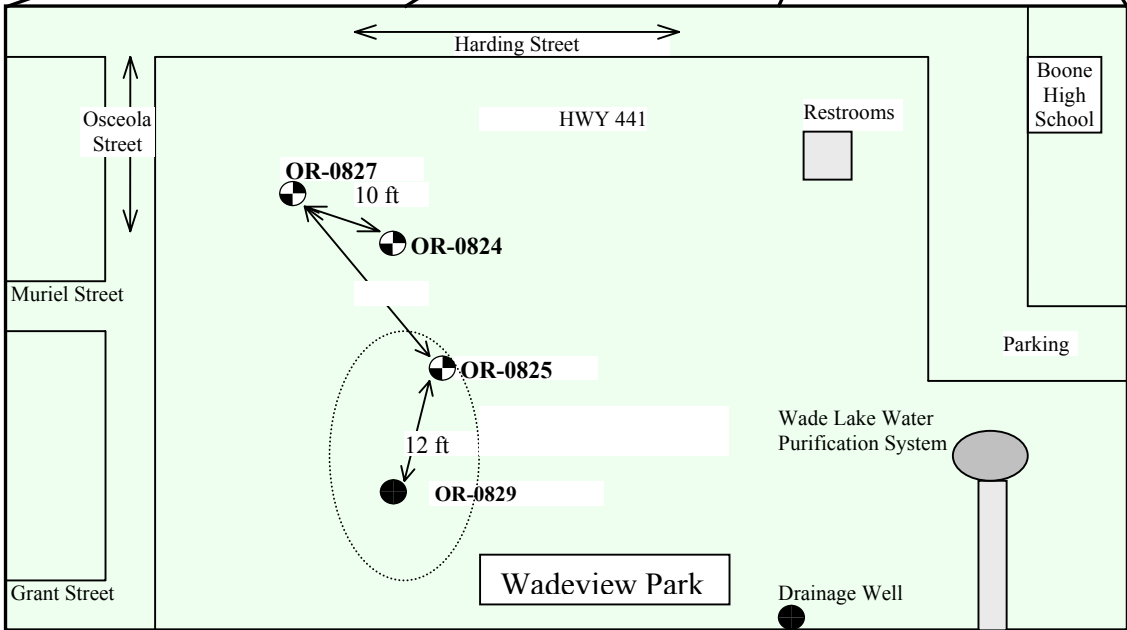
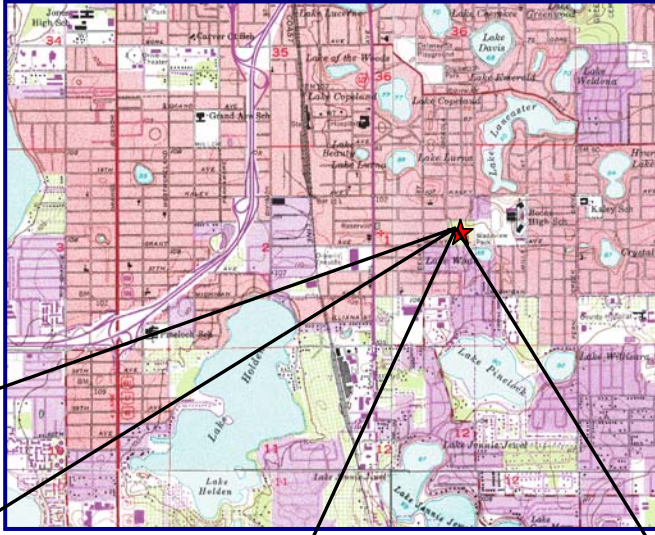
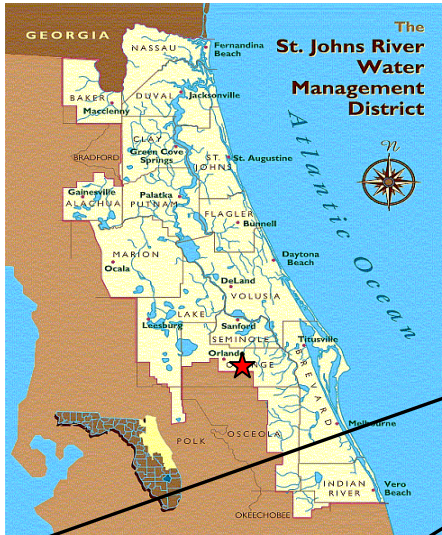
Wadeview Site Rehabilitation

11/13/04 Native soil and mulch used to rehabilitate site. 60 feet of sidewalk removed and replaced to rehabilitate vehicular entrance/ exits at site.

Table of Contents

Site Map	1
As-built Diagrams	2
Drilling Data	6
Grout Data	10
Well Development/Field Groundwater Quality	11
Laboratory Groundwater Quality	12
Lithologic Description	13
Permeability	14
Video Logs	15
Appendices	
Appendix A	
Geophysical Logs	
Appendix B	
Aquifer Performance Tests	
Constant Rate (10/24/03)	





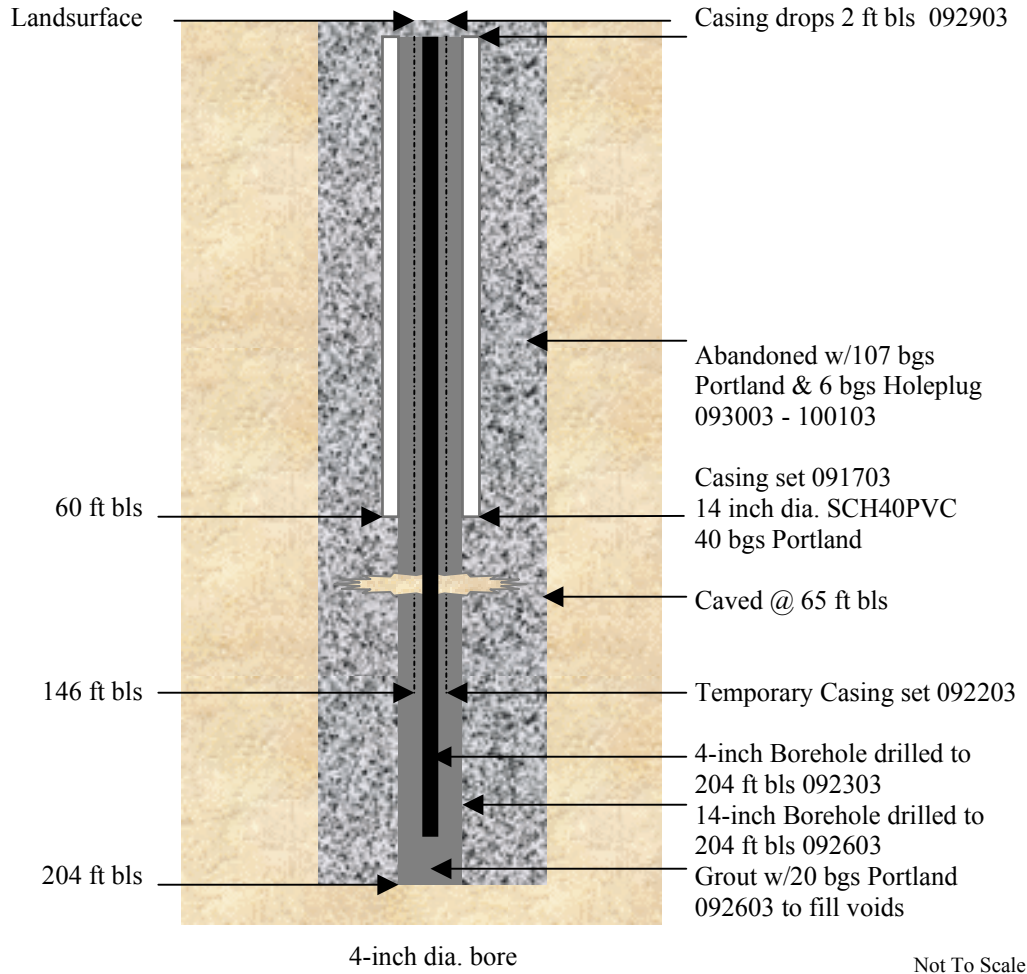
Not To Scale

Site:	Wadeview Park
Lat/Long:	283102/812233
TRS	T23n R29e sec01
Topo:	Orlando East
Site Elevation:	~90-ft NGVD
Project No:	5111-03001

SJRWMD

Figure 1. Site Map

OR0825 Abandoned Testhole

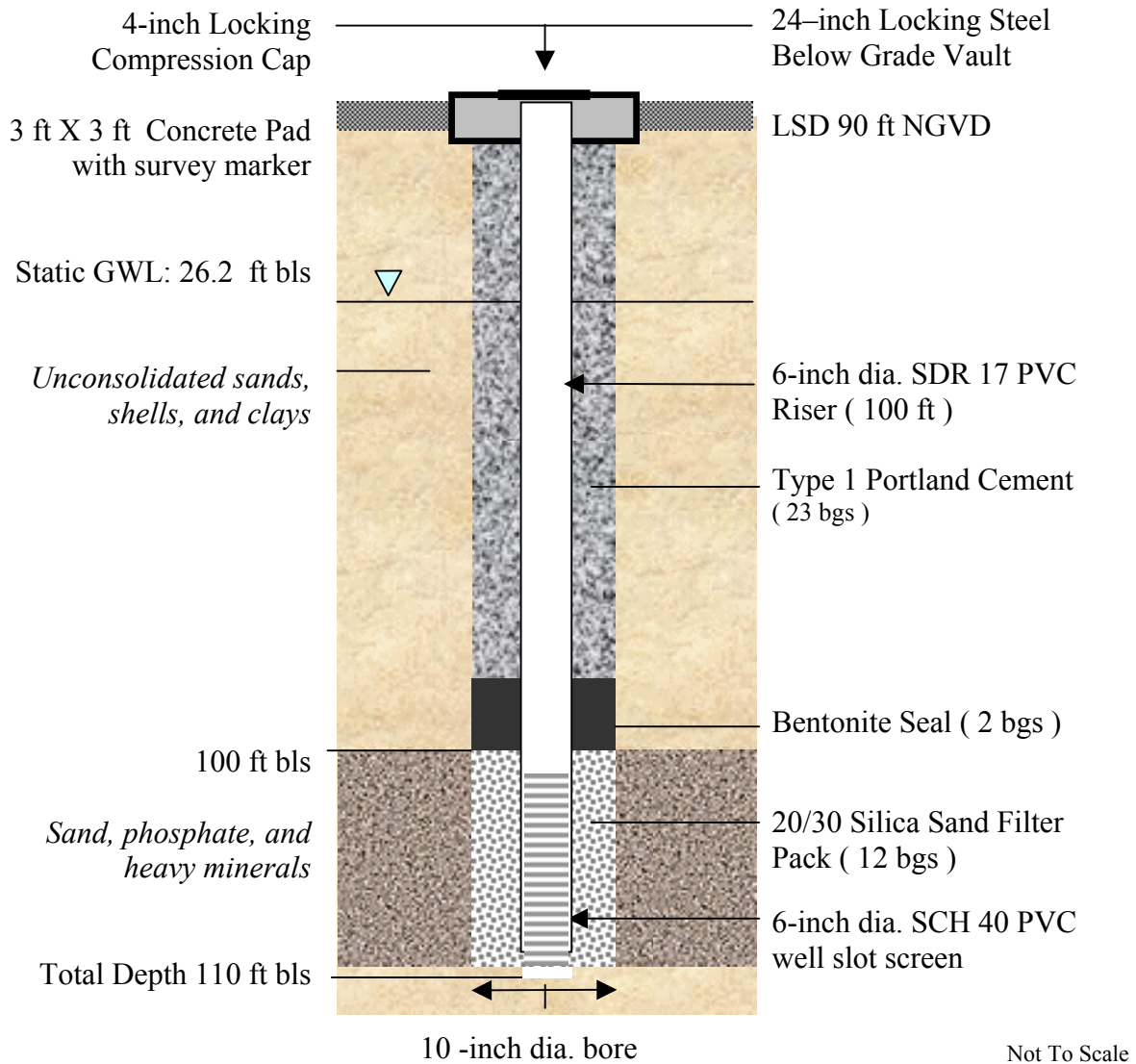


Site: Wadeview Park

Date Abandoned: 09/30/03

SJRWMD

Figure 2. Abandoned Well:OR-0825

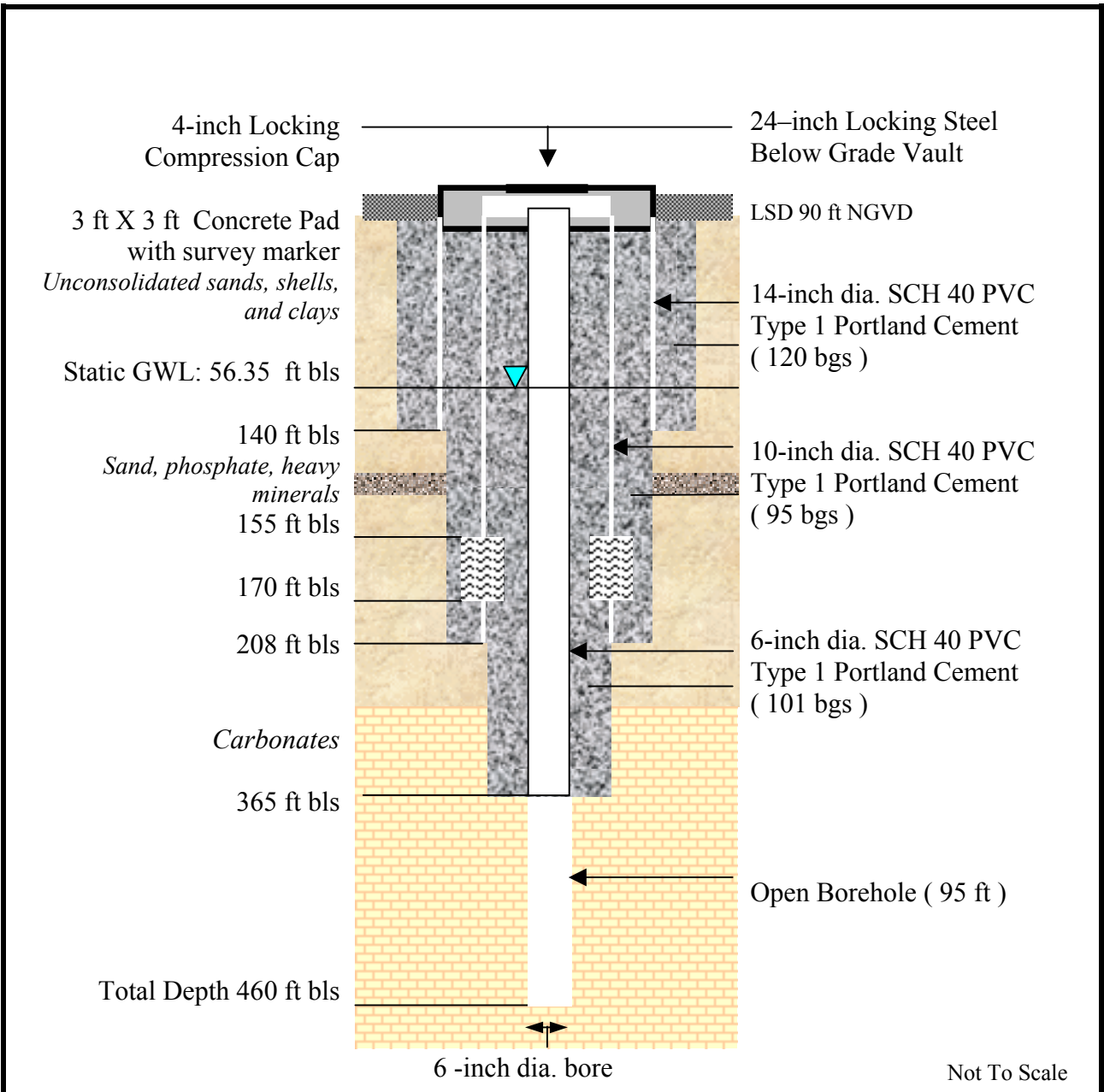


Site: Wadeview Park
GPS Lat/Long: 283102/812233

Driller: Diversified Drilling Corp.
Well Completed: 10/28/03

SJRWMD

Figure 3. Intermediate Well OR-0824

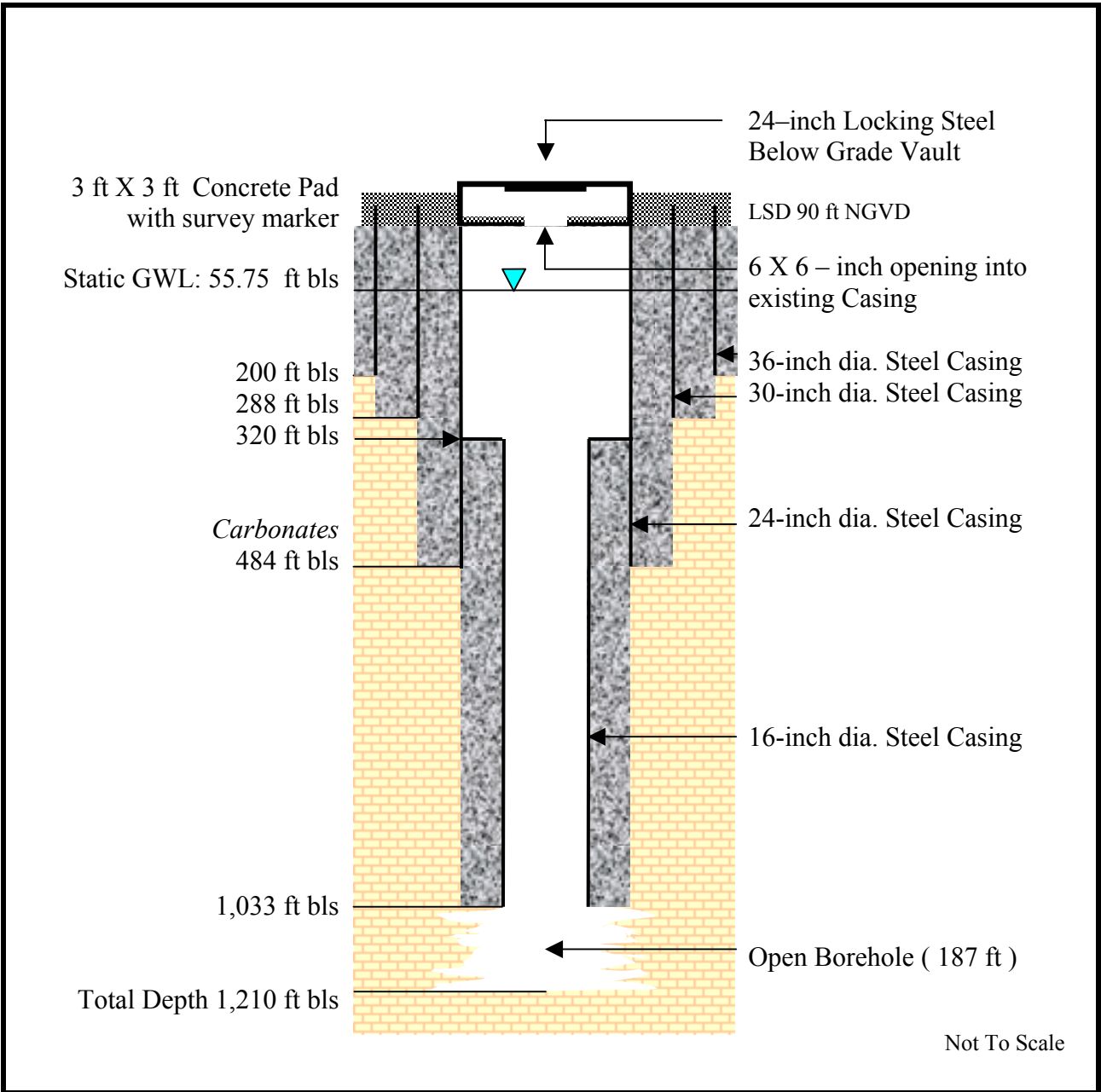


Site: Wadeview Park
GPS Lat/Long: 283102/812233

Driller: Diversified Drilling Corp.
Well Completed: 10/27/03

SJRWMD

Figure 4. Floridan Monitor Well OR-0827



Site: Wadeview Park
GPS Lat/Long: 283102/812233
Drilled for: Orlando Utilities Commission Kuhl Water Plant Well # 2
Well Completed: 1963 - Pump pulled in 1999 for conversion to Monitoring Well

SJRWMD

Figure 4. Floridan Monitor Well

OR-0829

Table 1.**Drilling Data**Site: Wadeview ParkWell ID: OR-0825Hydrologist: L Nelms

Date (yymmdd)	From (ft, bls)	To (ft, bls)	Method Mud/ Rev Air	Bit Size (inch)	Time (min)	Rate (ft/hr)	Comments
030915	0	56	Mud	4	100	34	
030915	56	71	Mud	4	55	16	
030916	71	124	Mud	4	185	17	
030916	124	130	Mud	4	30	12	
030916	130	135	Mud	4	20	15	
030916	135	140	Mud	4	15	20	
030916	140	150	Mud	4	15	40	
030916	150	160	Mud	4	20	30	
030917	0	15	Mud	20	20	45	
030917	15	25	Mud	20	11	55	
030917	25	35	Mud	20	20	30	
030917	35	45	Mud	20	8	75	
030917	45	55	Mud	20	7	86	
030917	55	60	Mud	20	14	21	
030918	0	110	Mud	4	25	264	
030918	110	160	Mud	4	50	60	
030918	160	160.5	Mud	Core	58	-	Core barrel clogged
030918	160.5	161	Mud	Core	45	-	Caving @ 130-135
030918	161	165	Mud	Core	29	8	
030918	165	170	Mud	Core	46	7	
030918	170	180	Mud	Core	21	29	
030918	180	186	Mud	Core	28	13	
030919	186	193	Mud	Core	60	7	Void @190-191
030919	193	-	Mud	Core	-	-	Core barrel clogged, void taking mud
030922	60	120	Mud	6	55	65	Drill out for temporary casing
030922	120	160	Mud	6	145	12	
030922	105	146	Mud	4	30	82	Caving prevents temporary casing from advancing beyond 146 ft bls
030922	146	170	Mud	4	-	-	
030923	170	185	Mud	4	85	11	Bit won't advance
030923	185	195	Mud	Core	-	-	VOIDS @190-191 and 192-193
030923	195	205	Mud	Core	60	60	Void @# 195-197.5
030923	41	64	Mud	14	50	28	19 ft of grout in 14-inch Casing
030923	64	90	Mud	14	60	26	
030924	90	104	Mud	14	-	-	
030924	104	114	Mud	14	15	40	
030924	114	134	Mud	14	65	18	
030924	134	155	Mud	14	75	17	
030925	105		Mud	14	-	-	Rods hang up

Table 1.

Drilling Data

Site: Wadeview Park
Hydrologist: L Nelms

Well ID: OR-0825

Date (yymmdd)	From (ft, bls)	To (ft, bls)	Method Mud/ Rev Air	Bit Size (inch)	Time (min)	Rate (ft/hr)	Comments
030925	105	130	Mud	14	60	25	
030925	130	160	Mud	14	25	72	
030925	160	170	Mud	14	33	18	
030925	170	180	Mud	14	105	6	
030925	180	188	Mud	14	30	16	
030926	188	190	Mud	14	-	-	Rods hanging up @ 190 ft; lost circulation
030926	95	204	Mud	14	70	-	Change to a nested rock bit
030926	65	198	Mud	14	55	-	Bit hangs up at bottom of 60 ft pit casing, caved below. Drill back through.
030929	65						Pit casing dropped 2 ft, add casing to landsurface, fill cavity with grout
030930							Casing and area around borehole has collapsed. Abandon and move north 20 ft

View of cavity after pit casing dropped. Line indicates original drill stem and pit casing position.



Table 2.**Drilling Data**Site: Wadeview ParkWell ID: OR-0827Hydrologist: L Nelms

Date (yymmdd)	From (ft, bls)	To (ft, bls)	Method Mud/ Rev Air	Bit Size (inch)	Time (min)	Rate (ft/hr)	Comments
031001	0	110	Mud	6	90	73	
031001	110	140	Mud	6	100	18	
031002	0	15	Mud	20	35	26	
031002	15	20	Mud	20	20	15	
031002	20	25	Mud	20	25	12	
031002	25	34	Mud	20	40	14	
031002	34	40	Mud	20	15	24	
031002	40	45	Mud	20	20	15	
031002	45	54	Mud	20	20	27	
031002	54	65	Mud	20	40	14	
031002	65	75	Mud	20	20	30	
031002	75	95	Mud	20	60	10	
031002	95	105	Mud	20	60	10	
031002	105	130	Mud	20	-	-	14-inch Casing set to 140 ft bls, rod length miscounted, no grout return inside pit casing.
031002	130	135	Mud	20	35	9	
031003	140	155	Mud	14	-	-	
031003	155	160	Mud	14	10	30	Change to Rock Bit, spins on Clay layer.
031006	160	170	Mud	14	70	9	
031006	170	171	Mud	14	65	1	Lost Circulation
031006	171	173	Mud	14	25	7	
031006	173	175	Mud	14	45	3	
031006	175	176	Mud	14	5	12	
031006	176	180	Mud	14	60	4	
031006	180	188	Mud	14	10	48	
031006	188	190	Mud	14	15	8	
031006	190	191	Mud	14	10	6	
031007	191	195	Mud	14	400	1	Drilling hard, slow
031007	195	196	Mud	14	170	-	
031008	196	198	Mud	14	135	1	
031008	198	208	Mud	14	110	5	Set 10-inch Casing
031013	155	190	Mud	10	-	-	Casing melts, stabilizer used to drill back through. @ 170 ft bls Casing tight. Interval reamed until clear. Bit clogs @ 197 ft bls
031013	190	197	Mud	10	35	12	
031014	150	160	Mud	10	35	17	
031014	160	170	Mud	10	5	120	
031014	170	190	Mud	10	45	13	
031014	190	203	Mud	10	15	52	Grout in Casing.
031014	203	210	Mud	10	15	28	
031014	210	220	Mud	10	20	30	
031014	220	230	Mud	10	27	22	Still clearing cuttings.
031014	230	240	Mud	10	11	54	

Table 2.**Drilling Data**Site: Wadeview ParkWell ID: OR-0827Hydrologist: L Nelms

Date (yymmdd)	From (ft, bls)	To (ft, bls)	Method Mud/ Rev Air	Bit Size (inch)	Time (min)	Rate (ft/hr)	Comments
031014	240	250	Mud	10	60	10	Bit clogs.
031015	250	260	Mud	10	35	17	
031015	260	270	Mud	10	45	13	
031015	270	280	Mud	10	19	32	
031015	280	290	Mud	10	22	27	
031015	290	300	Mud	10	18	33	
031016	300	310	Mud	10	20	30	Drilling softer @ 302 ft bls.
031016	310	320	Mud	10	28	21	Drilling harder @ 318 ft bls
031016	320	330	Mud	10	28	21	
031016	330	340	Mud	10	8	75	Drilling very soft – in Avon Park
031016	340	350	Mud	10	20	30	
031016	350	360	Mud	10	8	75	
031016	360	365	Mud	10	-	-	Lost Circulation.
031020	348	370	Mud	6	45	29	Set 6-inch Casing
031020	370	380	Mud	6	5	120	
031020	380	388	Mud	6	44	11	Lost Circulation
031020	388	390	Mud	6	5	24	
031020	390	400	Mud	6	6	100	
031020	400	410	Mud	6	5	120	Voids @ 410 ft bls
031020	410	420	Mud	6	4	150	
031020	420	430	Mud	6	9	66	Voids @ 427 – 429 ft bls
031020	430	440	Mud	6	11	55	
031020	440	450	Mud	6	-	-	Voids 440 – 450 ft bls
031020	450	460	Mud	6	-	-	TD

Table 3.**Drilling Data**Site: Wadeview ParkWell ID: OR-0824Hydrologist: L Nelms

Date (yymmdd)	From (ft, bls)	To (ft, bls)	Method Mud/ Rev Air	Bit Size (inch)	Time (min)	Rate (ft/hr)	Comments
031022	0	50	Mud	10	7	86	
031022	50	60	Mud	10	23	26	
031022	60	70	Mud	10	10	60	
031022	70	80	Mud	10	10	60	
031022	80	90	Mud	10	20	30	
031022	90	110	Mud	10	30	20	TD Set 6-inch Casing

Table 4.**Grout Data**Site: Wadeview ParkWell ID: OR-0827

DATE	TAG DEPTH (ft)	ANNULUS/BORE (inch)	QUANTITY (yds/bags)	MATERIAL	COMMENTS
10/02/03	140	B-14	120 bags	P-94	Set 140-ft of 14-inch dia. SCH 40 PVC casing. Tremie grout to landsurface.
10/08/03	208	B-14	95 bags	P-94	Set 208-ft of 10-inch dia. SCH 40 PVC casing. Tremie grout to landsurface
10/17/03	365	B-10	66 bags	P-94	Set 365-ft of 6-inch dia. SDR 17 PVC casing. Pressure grout
10/20/03	330	Inside	-	-	Tag only
10/20/03	170	A-10	35 bags	P-94	Tremie grout to landsurface
10/24/03	-	-	2 bags	Q-40	Hand mix grout for 2 x 2 concrete pad and complete grout around 6-inch casing and vault

*P-94 = Type 1 Portland Cement

*Q-40 = Quickrete 40 lbs

Table 5.**Grout Data**Site: Wadeview ParkWell ID: OR-0824

DATE	TAG DEPTH (ft)	ANNULUS/BORE (inch)	QUANTITY (yds/bags)	MATERIAL	COMMENTS
10/22/03	110	B-10	-	SDR17 PVC slot screen	Set 10-ft of 6-inch dia. SDR17 PVC slot screen
10/22/03	110	B-10	-	SDR17 PVC	Set 100-ft of 6-inch dia. SDR17 PVC riser.
10/22/03	110	B-10	12 bags	20/30 Silica Sand	Filter pack 10 ft 0.01-inch slot screen PVC
10/22/03	98	B-10	2 bags	Holeplug	Bentonite Seal
10/22/03	96	B-10	23 bags	P-94	Tremie grout to landsurface
10/24/03	-	-	2 bags	Q-40	Hand mix grout for 2 x 2 concrete pad and complete grout around 6-inch casing and vault

*P-94 = Type 1 Portland Cement

*Q-40 = Quickrete 40 lbs

Table 6.

Grout Data

Site: Wadeview Park

Well ID: OR-0825

DATE	TAG DEPTH (ft)	ANNULUS/BORE (inch)	QUANTITY (yds/bags)	MATERIAL	COMMENTS
09/17/03	60	B-20	40 bags	P-94	Set 60-ft of 14-inch dia. SCH 40 PVC casing. Tremie grout to landsurface.
09/26/03	204	B-14	20 bags	P-94	Grout through tremie pipe to fill voids.
09/30/03	95	B-14	107 bags 6 bags	P-94 Holeplug	Abandon borehole with grout through tremie pipe and holeplug to landsurface

*P-94 = Type 1 Portland Cement

*Q-40 = Quickrete 40 lbs

Table 7.

Well Development/Field Groundwater Quality

Site: Wadeview Park

Well ID: OR-0824

Hydrologist: L. Nelms

Casing depth/Diameter: 100-ft/6-inch

Screen Interval: 10-ft

L A B	Date (yymmdd/hhmm)	Static GWL (ft bls)	Pumping GWL (ft bls)	Rate gpm	ΣVol (gal)	Temp (Deg C)	p H	Cl (mg/l)	Specific Conductivity (us/cm)	Comments
	031023/0854	-	-	-	-	-	-	-	-	Develop @ 95 ft bls with direct air
	031023/0858	-	-	-	-	24.8	8.2	-	371.1	Cloudy/ olive
	031023/0920	-	-	-	-	25.1	8.3	-	270.9	Cloudy
	031023/0926		-	-	-	-	-	-	-	Stop dev surge on/off
	031023/1030	-	-	-	-	-	-	-	-	Start dev
	031023/1045	-	-	-	-	24.4	8.3		267.2	
	031023/1050	-	-	-	-	-	-	-	-	Stop dev/ surge on/off
	031023/1105	-	-	-	-	-	-	-	-	Start dev Cloudy/ olive
	031023/1108	-	-		-	24.5	8.3	-	269.2	Clearing
✓	031023/1125	-	-			24.4	8.3	13.4	266.8	Clear
	031023/1140									Stop dev @ 75 minutes
	031024/0740	25.88								

Table 8.**Well Development/Field Groundwater Quality**Site: Wadeview ParkWell ID: OR-0827Hydrologist: L. NelmsCasing depth/Diameter: 365-ft/6-inchOpen Hole: 95-ft

L A B	Date (yymmdd/hhmm)	Static GWL (ft bls)	Pumping GWL (ft bls)	Rate gpm	ΣVol (gal)	Temp (Deg C)	p H	Cl (mg/l)	Specific Conductivity (us/cm)	Comments
	031022/1352	56.7	-	>300	-	-	-	-	-	Develop @ 200 ft bls with direct air
	031022/1355	-	-	>300	-	24.8	8.9	-	246.4	Cloudy
	031022/1415	-	-	>300	-	24.6	9.6	-	197.8	
	031022/1437	-	-	>300	-	24.4	9.1	-	300.3	
	031022/1530	-	-	>300	-	24.3	8.8	-	300.1	
	031022/1800	-	-	>300	-	-	-	-	-	Stop dev
	031023/0750	-	-	>300	-	23.7	7.8	-	303.2	Start dev
	031023/0815	-	-	>300	-	23.6	7.9	-	330.0	Clear/minor seds
✓	031023/0830	-	-	>300	67,500	23.6	7.9	19.2	331.0	Stop dev @225 minutes
	031023/0918	56.7								

Table 9.**Laboratory Groundwater Quality**Site: Wadeview Park

Well ID:	OR-0827	OR-0824
Sample Date	102303/0829	102303/1125
Casing Depth (ft bls)	365	100
Well Depth (ft bls)	460	110
Water Temp (deg C)	23.6	24.4
Conductivity-Field (umhos/cm)	331	266
Conductivity(umhos/cm)	314	254
pH-Field (std units)	7.9	8.3
Alkalinity (mg/l)	147	107
Ca-T (mg/l)	60.1	38.4
Mg-T (mg/l)	8.57	6.88
Na-T (mg/l)	11.8	13.2
K-T(mg/l)	2.18	2.26
Cl (mg/l)	15.4	11.7
SO4 (mg/l)	9.51	15.6
F (mg/l)	0.321	0.438
Si-T (mg/l)	4.443	12.2
Ba-T (ug/l)	9.82	16.7
Fe-T (ug/l)	89.8	1090
Sr-T (ug/l)	125	130
TDS (mg/l)	204	187

Table 10.

Lithologic Description

Site: Wadeview Park

Well/Testhole: OR-0825

Samples Described By: L. Nelms

From	To	Sample Method	Blow Count	Lithology	Return %
4	6	SPT	2 3 5 5	Sand , very pale orange, fine, dry	50
9	11	SPT	3 5 6 7	Sand , clayey, moderately stiff, pale yellowish brown, fine	60
14	16	SPT	4 5 6 6	Sand/ silt , pale yellowish brown, fine	40
19	21	SPT	4 5 6 6	Sand/silt , minor clay, pale brown, fine	40
24	26	SPT	4 5 7 9	Sand/ silt , minor clay, pale yellowish brown, fine	30
29	31	SPT	3 5 6 4	Sand/ silt , pale yellowish brown, some dark brown stringers, fine	50
34	36	SPT	3 4 10 11	Sand/ silt , very pale orange, pale yellowish brown, fine	30
39	41	SPT	4 6 8 10	Sand/ silt , very pale orange, fine	30
44	46	SPT	6 8 12 9	Sand , very pale orange/ pale yellowish brown, fine	40
49	51	SPT	8 11 13 16	Sand , pale yellowish brown, dark brown stringer, fine - medium	30
54	56	SPT	5 2 2 2	Sand , grayish orange, fine – medium (TOS) Clay , sandy, olive gray, soft (BOS)	100
56	58	Shelby	-	Clay , sandy/ silty, olive gray, soft	100
64	66	SPT	1 3 3 3	Sand , clayey, olive gray, soft to moderately stiff, fine - coarse	100
69	71	SPT	2 10 11 11	Sand , olive gray, fine – medium, minor clay and silt	70
74	76	SPT	2 2 2 3	Sand , clayey, silty, olive gray, very soft, some heavy minerals, very fine	100
79	81	SPT	4 5 6 6	Sand , clayey, silty, olive gray, very soft, some heavy minerals, very fine	100
84	86	SPT	1 1 1 2	Sand/ silt , clayey, olive gray, very soft, some heavy minerals, very fine	100
89	91	SPT	2 3 3 6	Clay , sandy, olive gray, soft, some moderately stiff, heavy minerals	100
94	96	Shelby	-	Sand , clayey, olive gray, medium, heavy minerals, phosphate	80
99	101	SPT	5 5 9 11	Sand/ phosphate , clear/ white/ black and olive gray, minor clay, some heavy minerals, medium – very coarse pebbles	60
101	109	Cuttings	-	Sand/ phosphate , clayey, clear/ white/ black and olive gray, some heavy minerals, medium – very coarse pebbles	100
109	111	SPT	14 25 25 35	Dolostone , sandy, clay, phosphatic, hard nodules yellowish gray, fine - medium	5
114	116	SPT	15 30 43 50-5	Clay , sandy, olive gray, fine – medium, soft to moderately stiff, heavy minerals	10
119	121	SPT	19 50-5	Clay/ sand , stiff, light olive gray/ olive gray, mottled, heavy minerals, phosphate	100

Table 10.**Lithologic Description**Site: Wadeview ParkWell/Testhole: OR-0825Samples Described By: L. Nelms

From	To	Sample Method	Blow Count	Lithology	Return %
130	160	Cuttings	-	Clay, sand, phosphate, light olive gray/ olive gray, blebs of dolostone, yellowish gray	-
160	161	Cores		Dolostone, sandy, cherty, fossil molds, worm casts, phosphate, pale yellowish brown and mottled clear to black	10
161	170	Cores		Clay, olive gray, moderately stiff, phosphate, dolostone stringers	
170	197	Cores		Dolostone conglomerate, indurated, phosphatic, fossil molds, yellowish brown and mottled gray to black	
197.5	205	Cores		Limestone, very pale orange, fossiliferous	
205	280	Cuttings		Limestone, very pale orange, fossiliferous	
280	290	Cuttings		Limestone, pale yellowish brown, fossil molds	
290	310	Cuttings		Limestone, very pale orange mottled with pale yellowish brown, fossil molds	
310	318	Cuttings		Limestone, very pale orange, fossil molds, some clayish lime mud, soft	
318	340	Cuttings		Limestone, very pale orange/ moderate brown, fossil fragments and molds, echinoids	
340	360	Cuttings		Limestone, very pale orange/ pale yellowish brown, fossil molds/ fragments, dictyconus, cuttings very small	
370	388	Cuttings		Limestone, very pale orange/ pale yellowish brown, fossil molds/ fragments, dictyconus	

Table 11.***Permeability**

MONITORING WELL		Collection Method	Sample Depth (ft, bls)	Wet Density (PCF)	Coefficient Of Permeability (cm/sec)
Site	Well ID				
Wadeview Park	OR-0825	Core	190	166.7	1.1×10^{-6}
Wadeview Park	OR-0825	Core	200	137.2	4.2×10^{-4}
Wadeview Park	OR-0827	Core	170	136.3	3.7×10^{-5}
Wadeview Park	OR-0825	Shelby	56-58.5	108.8	1.2×10^{-6}
Wadeview Park	OR-0825	Shelby	94-96.5	125.5	5.8×10^{-5}

* Permeability test (ASTM D5084) performed by MACTEC Engineering and Consulting, Inc.

Measurement of Hydraulic Conductivity of Saturated Materials using a Flexible Wall Permeameter.

Table 12.

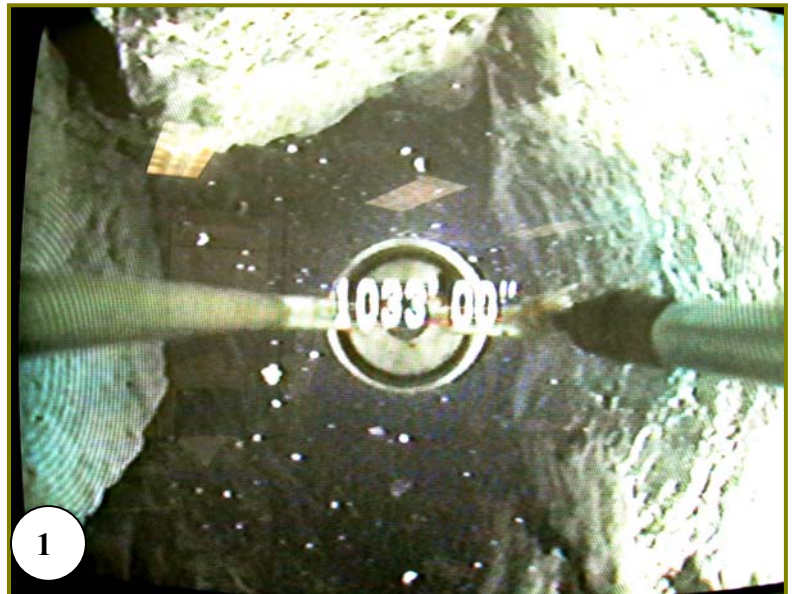
Video Logs

Survey By: Advanced Borehole Services

Date	Well ID:	Survey Depth	Depth (ft bls)	Comments
012104	OR-0829	1,208 ft	58	Water Level 58 ft bls
			0 - 318	24 –inch Steel Casing, elevator against borehole wall @ 318 ft bls where casing narrows.
			318 - 1027	16 – inch Steel Casing
			1,027 – 1,208	Irregular wallowed out borehole with vertical fractures, large vugs, and ledges to TD.
			1080, 1085, 1098, 1157	Tremie pipes against borehole walls



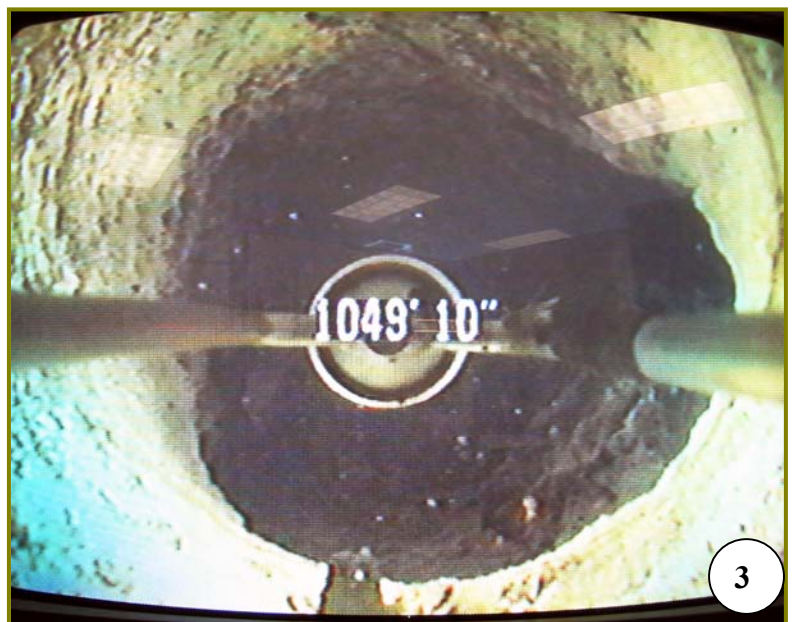
1. Vertical Fractures at 1,033 ft bls and similar fractures to TD
2. Tremie against borehole wall at 1,080 ft bls. Also at 1,085, 1,098, and 1,157.
3. Ledge and wallowed out borehole at 1,049 ft bls. Similar ledges and irregular wallowed out borehole to TD.



1




2



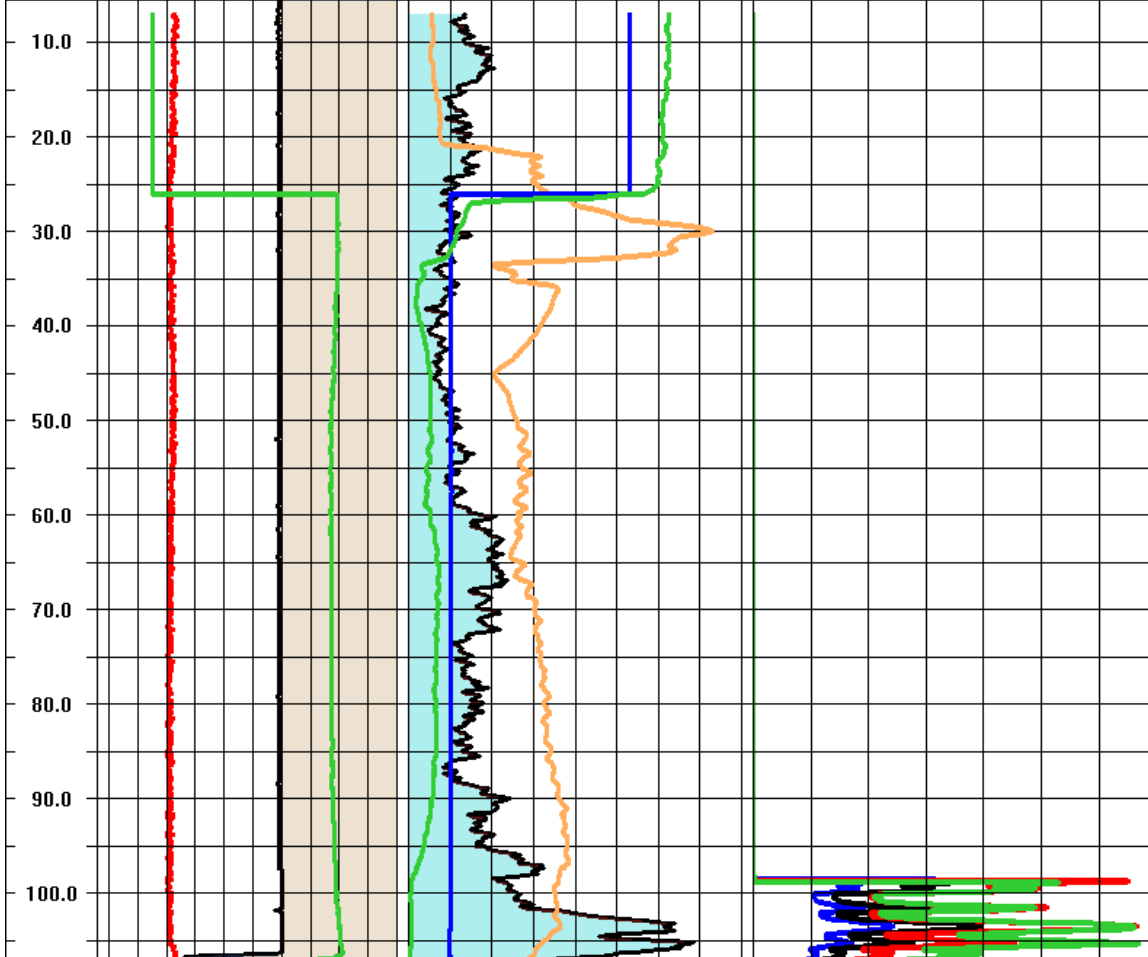
3

Appendix A

Geophysical Logs

 <p>Division of Ground Water Programs P.O. Box 1429 Palatka, FL 32178-1429 (386) 329 - 4835</p>	Geophysical Logs		Well ID	OR0824
	Site : Wadeview Park	Lat / Long	283102/812233	
	Date : 12/10/03	Elevation	90 ft NGVD	
	Logger : SJRWMD - J Lombardi	Depth Logged	455 ft bls	
	Comments :	Casing Depth	365 ft bls	
		Diameter	inches	
		Flow Surface	above Casing	
		Pumped	gpm	
		Aquifer System		

Depth	TEMP	GAMM	R8
1ft.200ft	25 DEGC 30	0 CPS 400	0 OHM-M 700
	COND	SP	R16
	0 US/CM 500	0 MV 2000	0 OHM-M 700
	CALI	FRES	R32
	0 INCHES 10	0 OHM-M 200	0 OHM-M 700
		SPR	R64
		0 OHM 20000	0 OHM-M 700





Division of Ground Water Programs

P.O. Box 1429
Palatka, FL 32178-1429
(386) 329 - 4835

Geophysical Logs

Well ID

OR0827

Site : Wadeview Park

Lat / Long 283102/812233

Elevation 90 ft NGVD

Date : 12/10/03

Depth Logged 455 ft bls

Logger : SJRWMD - J Lombardi

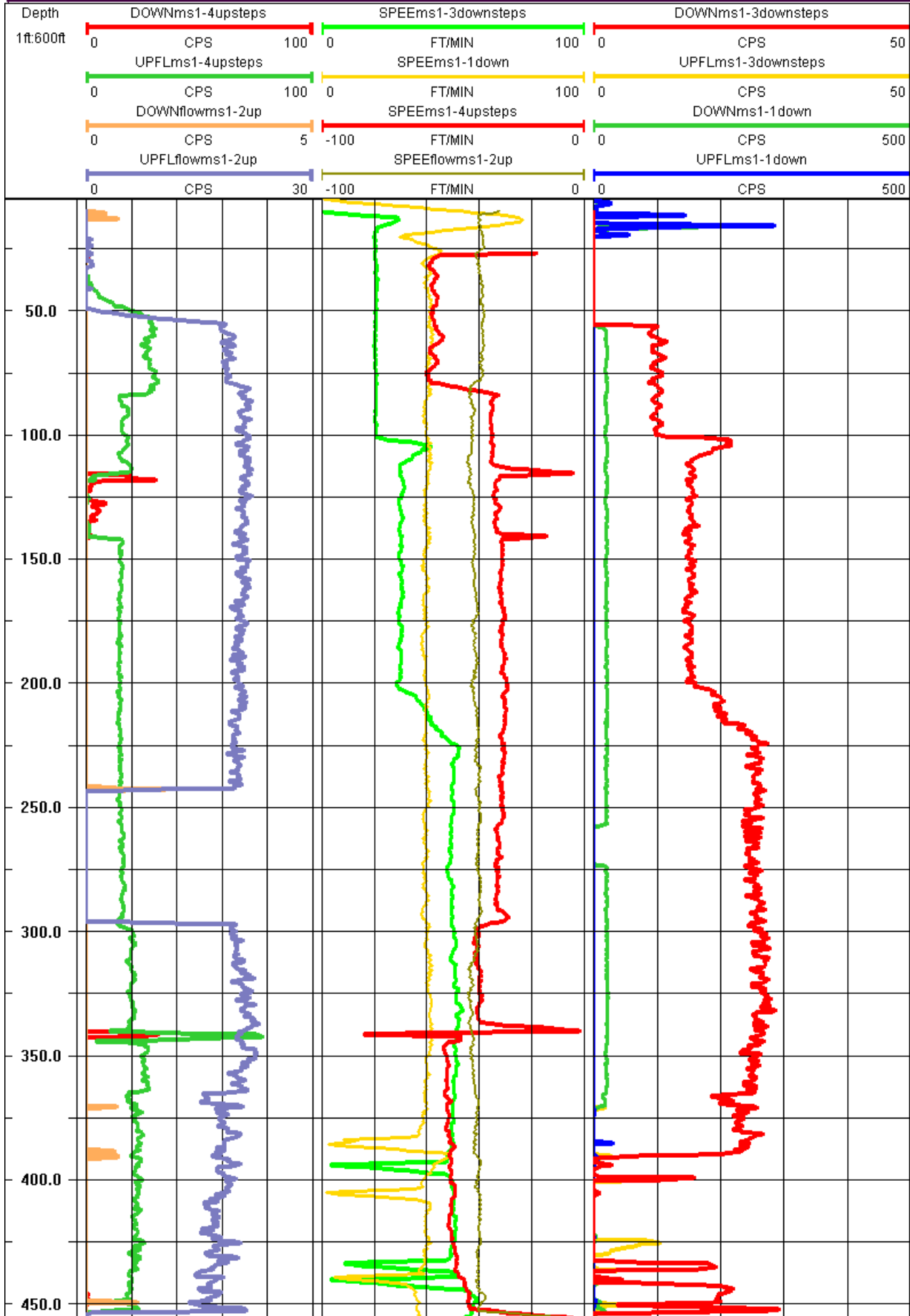
Casing Depth 365 ft bls

Diameter 6 inches

Comments :

Flow Surface _____ above Casing
Pumped _____ gpm

Aquifer System Floridan





Division of Ground Water Programs

P.O. Box 1429
Palatka, FL 32178-1429
(386) 329 - 4835

Geophysical Logs

Well ID

OR0827

Site : Wadeview Park

Lat / Long

283102/812233

Elevation

90 ft NGVD

Date : 12/10/03

Depth Logged

455 ft bls

Logger : SJRWMD - J Lombardi

Casing Depth

365 ft bls

Diameter

6 inches

Comments :

Flow Surface

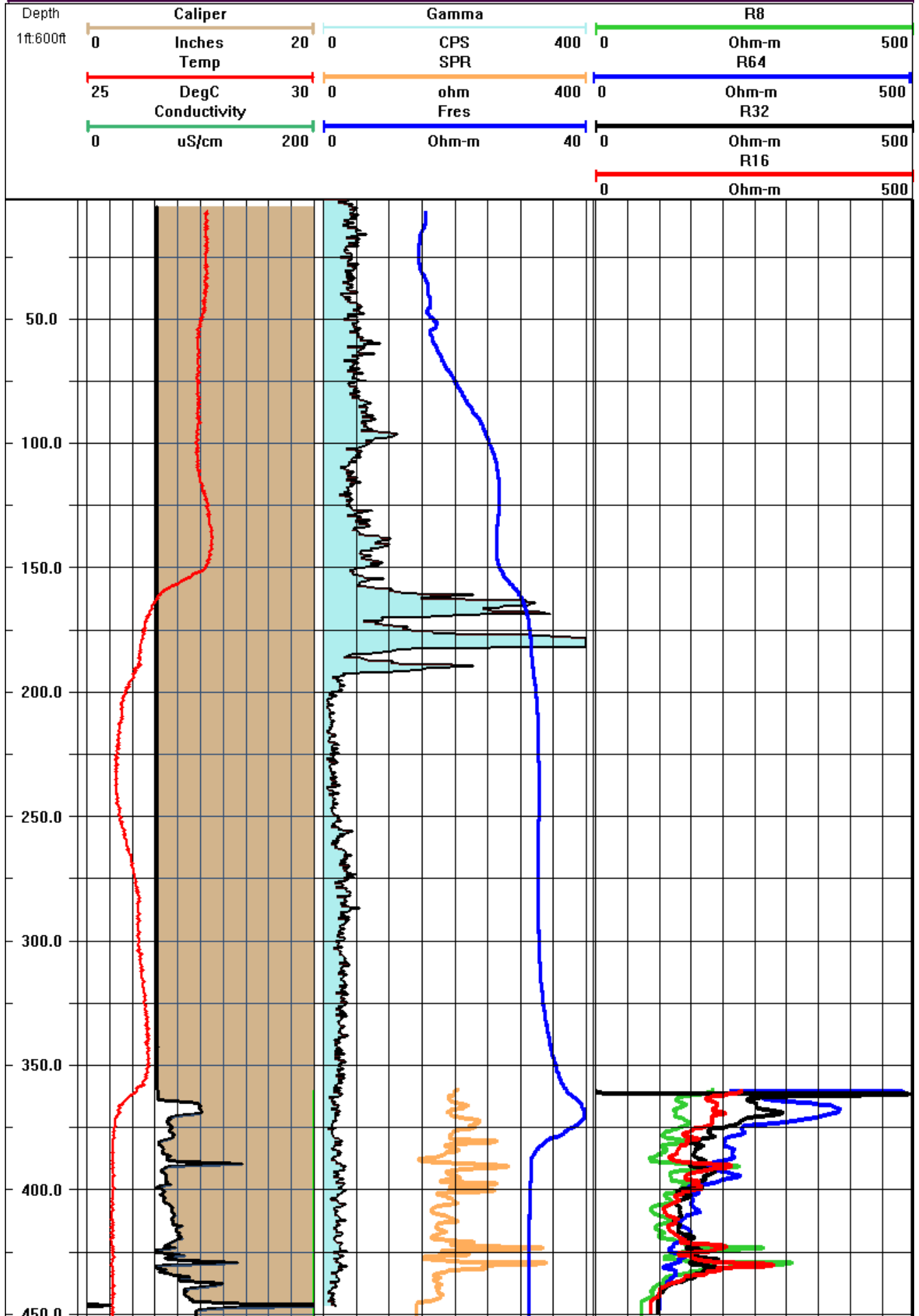
above Casing

Pumped

gpm

Aquifer System

Floridan





Division of Ground Water Programs

P.O. Box 1429
Palatka, FL 32178-1429
(386) 329 - 4835

Geophysical Logs

Well ID

OR0829

Site : Wadeview Park

Lat / Long 283102/812233

Elevation 90 ft NGVD

Date : 12/10/03

Depth Logged 1212 ft bls

Logger : SJRWMD - J Lombardi

Casing Depth 315/1031 ft bls

Diameter 24/16 inches

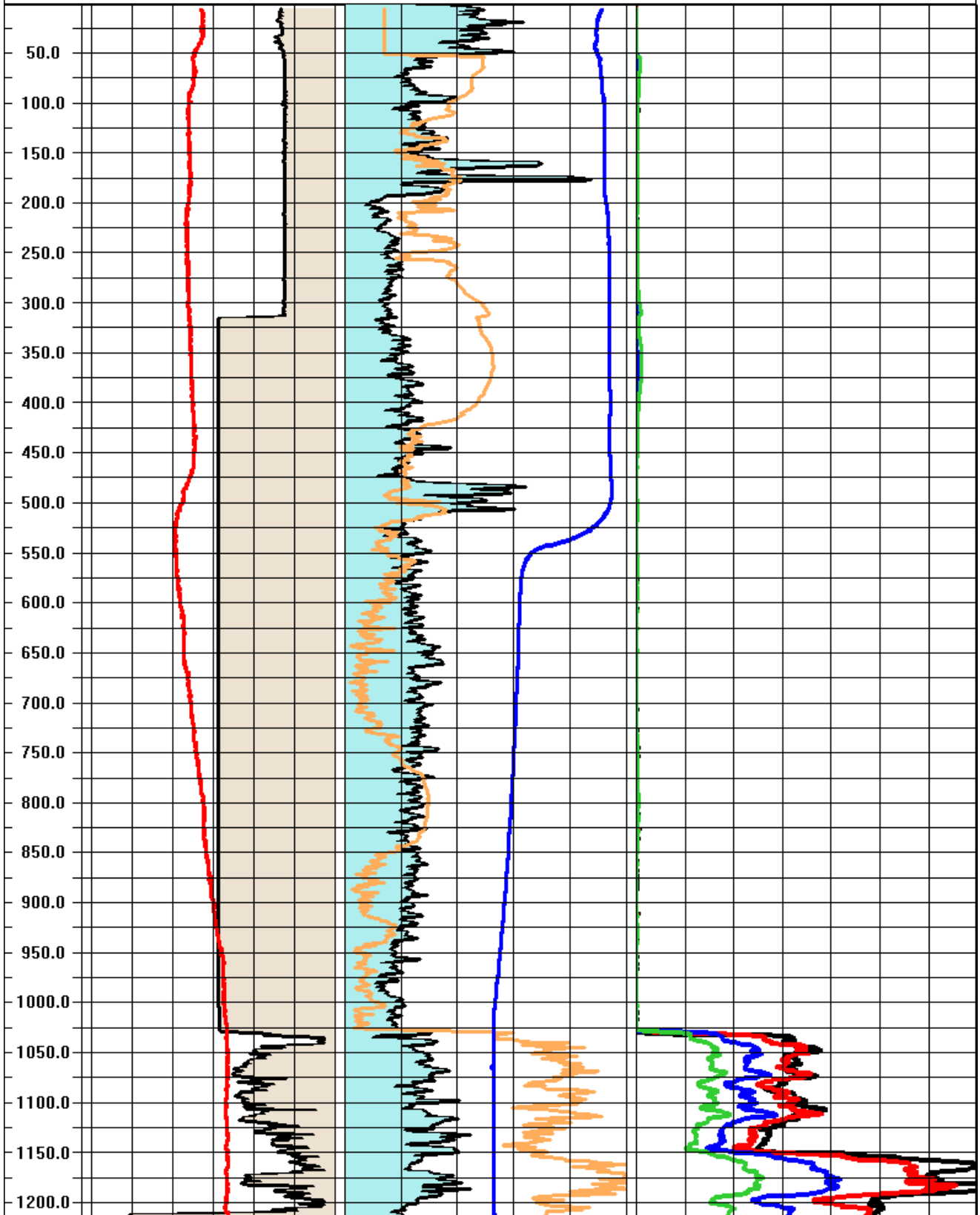
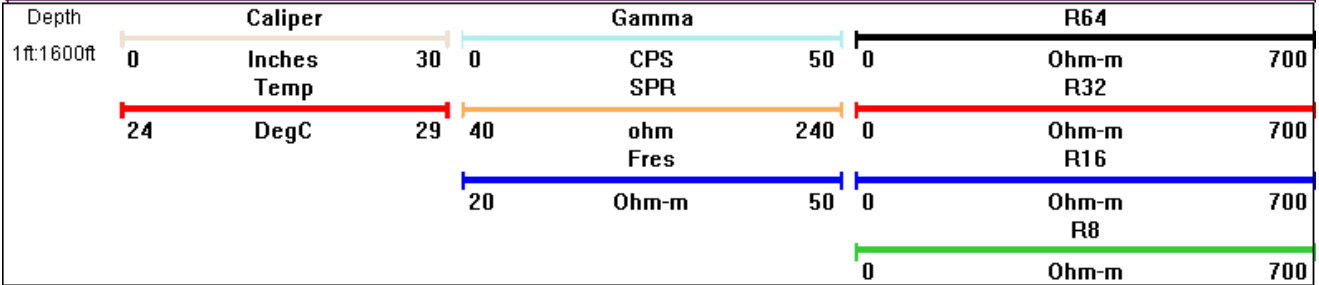
Comments :

Flow Surface _____ above Casing

Pumped _____ gpm

Old production well on site.

Aquifer System Floridan



Appendix B

Aquifer Performance Tests

**OR-0827 Aquifer Performance Test and Recovery
Constant Rate / 100 Minute (10/24/03)**

Hydrologist: Laura Nelms

Pumped Well: OR-0827

Casing Diameter/Depth: 6-inch/365-ft
Borehole Diameter/Depth: 6-inch/95-ft
Pump: 7.5-hp submersible pump
Pump Depth: 150-ft
Discharge Line: 300-ft
Discharge rate: 112 gpm
Static GWL: 58.5-ft bls

Observation Well OR-0824

Casing Diameter/Depth: 6-inch/110-ft
Screen Diameter/Depth: 6-inch/100-110-ft
Distance to pumped well 10-ft
Distance to discharge point approximately 300-ft
Static GWL: 27.5-ft btoc

Notes:

7.5 hp submersible pump used for APT, discharge rate 112 gpm. Conclude quifer not stressed. Equipment failure 98.8 minutes into test. Test stopped and recovery manually initiated approximately 50 seconds behind actual recovery start.

**OR-0824 Aquifer Performance Test and Recovery
Constant Rate / 100 Minute (10/24/03)**

Hydrologist: Laura Nelms

Pumped Well OR-0824

Casing Diameter/Depth: 6-inch/110-ft
Screen Diameter/Depth: 6-inch/100-110-ft
Pump: 7.5-hp submersible pump
Pump Depth: 107-ft
Discharge Line: 50-ft
Discharge rate: 7.14 gpm
Static GWL: 27.5-ft btoc

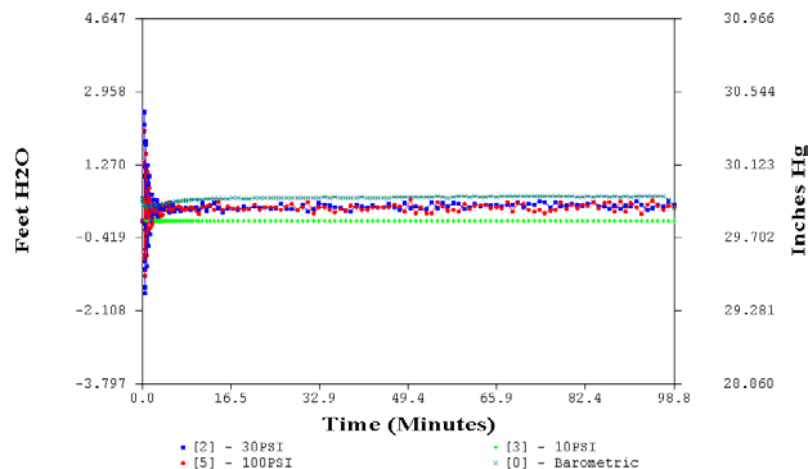
Observation Well Well: OR-0827

Casing Diameter/Depth: 6-inch/365-ft
Borehole Diameter/Depth: 6-inch/95-ft
Distance to pumped well 10-ft
Distance to discharge point approximately 50-ft
Static GWL: 58.5-ft bls

Notes:

7.5 hp submersible pump used for APT, discharge rate 29 gpm. Drawdown to pump. Contractor throttles down pump to 10 gpm, again to 7.14 gpm. Drawdown stabilizes.

OR0827test1



In-Situ Inc. Hermit 3000

Report from file: C:\Win-Situ\Data\SN45532 2003-10-24 095715 OR0827test1.bin
DataMgr Version 3.71

Serial number: 00045532
Firmware Version 7.10
Unit name: HERMIT 3000

Test name: OR0827test1

Test defined on: 10/23/03 15:38:54
Test started on: 10/24/03 09:57:15
Test stopped on: N/A N/A
Test extracted on: 10/24/03 09:59:52

Data gathered using Logarithmic testing

Maximum time between data points: 1.0000 Minutes.
Number of data samples: 169

TOTAL DATA SAMPLES 169

Channel number [2]
Measurement type: Pressure
Channel name: 30PSI
Linearity: 0.2466000
Scale: 29.6760000
Offset: -0.0377000

Warmup: 50
Specific gravity: 1.000
Mode: TOC
User-defined reference: 0.000 Feet H2O
Referenced on: test start
Pressure head at reference: 20.861 Feet H2O

Channel number [3]
Measurement type: Pressure
Channel name: 10PSI
Linearity: 0.0039000
Scale: 10.0201000
Offset: -0.1328000
Warmup: 50
Specific gravity: 1.000
Mode: TOC
User-defined reference: 0.000 Feet H2O
Referenced on: test start
Pressure head at reference: 7.643 Feet H2O

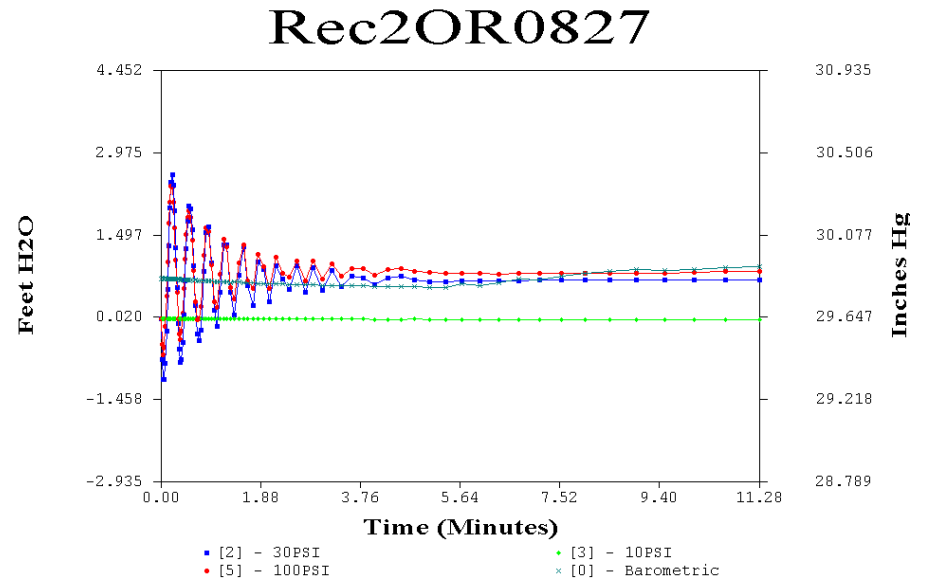
Channel number [5]
Measurement type: Pressure
Channel name: 100PSI
Linearity: 0.3830000
Scale: 99.4670000
Offset: -0.2660000
Warmup: 50
Specific gravity: 1.000
Mode: TOC
User-defined reference: 0.000 Feet H2O
Referenced on: test start
Pressure head at reference: 71.172 Feet H2O

Channel number [0]
Measurement type: Barometric Pressure
Channel name: Barometric
Linearity: 0.0000000
Scale: 0.0000000
Offset: 0.0000000
Warmup: 50

Date	Time	ET (min)	Chan[2] Feet H2O	Chan[3] Feet H2O	Chan[5] Feet H2O	Chan[0] Inches Hg
10/24/03	09:57:15	0.0000	0.000	0.000	0.000	29.939
10/24/03	09:57:16	0.0217	0.004	0.000	0.000	29.939
10/24/03	09:57:17	0.0433	0.004	0.000	0.000	29.937
10/24/03	09:57:18	0.0650	0.000	0.000	0.000	29.935
10/24/03	09:57:20	0.0867	0.000	0.001	0.000	29.935
10/24/03	09:57:21	0.1083	0.000	0.001	0.000	29.933
10/24/03	09:57:22	0.1300	-0.004	0.001	0.000	29.929
10/24/03	09:57:24	0.1517	-0.004	0.001	0.000	29.927
10/24/03	09:57:25	0.1733	-0.004	0.000	0.000	29.925
10/24/03	09:57:26	0.1950	-0.004	0.000	0.000	29.923

10/24/03	09:57:28	0.2167	-0.004	0.000	0.000	29.923	10/24/03	10:02:02	4.7852	0.387	-0.001	0.230	29.907	
10/24/03	09:57:29	0.2383	-0.004	0.000	0.000	29.921	10/24/03	10:02:18	5.0655	0.198	-0.001	0.417	29.907	
10/24/03	09:57:30	0.2600	-0.004	0.001	0.000	29.919	10/24/03	10:02:36	5.3623	0.353	-0.001	0.259	29.911	
10/24/03	09:57:31	0.2817	0.000	0.001	0.000	29.917	10/24/03	10:02:55	5.6768	0.370	-0.001	0.216	29.911	
10/24/03	09:57:33	0.3033	0.000	0.000	0.000	29.915	10/24/03	10:03:15	6.0100	0.215	-0.001	0.244	29.915	
10/24/03	09:57:34	0.3250	0.000	0.000	0.014	29.915	10/24/03	10:03:36	6.3628	0.262	-0.001	0.316	29.917	
10/24/03	09:57:35	0.3467	2.532	0.001	-0.805	29.911	10/24/03	10:03:59	6.7367	0.271	-0.001	0.331	29.919	
10/24/03	09:57:37	0.3683	1.243	0.001	1.825	29.911	10/24/03	10:04:22	7.1327	0.228	-0.001	0.316	29.919	
10/24/03	09:57:38	0.3900	2.227	0.001	2.070	29.909	10/24/03	10:04:48	7.5520	0.258	-0.001	0.244	29.921	
10/24/03	09:57:39	0.4117	2.536	0.001	2.084	29.907	10/24/03	10:05:14	7.9963	0.284	-0.001	0.244	29.923	
10/24/03	09:57:41	0.4333	2.510	0.001	1.797	29.907	10/24/03	10:05:43	8.4670	0.275	-0.001	0.273	29.923	
10/24/03	09:57:42	0.4555	1.810	0.001	1.322	29.907	10/24/03	10:06:12	8.9655	0.254	-0.001	0.316	29.925	
10/24/03	09:57:43	0.4790	1.023	0.001	0.532	29.903	10/24/03	10:06:44	9.4935	0.288	-0.001	0.287	29.925	
10/24/03	09:57:45	0.5038	-0.069	0.000	-0.216	29.905	10/24/03	10:07:18	10.0528		0.314	-0.001	0.230	29.927
10/24/03	09:57:46	0.5302	-0.942	0.001	-0.906	29.903	10/24/03	10:07:53	10.6453		0.254	-0.003	0.158	29.927
10/24/03	09:57:48	0.5582	-1.544	0.001	-1.294	29.903	10/24/03	10:08:31	11.2728		0.408	-0.001	0.316	29.929
10/24/03	09:57:50	0.5878	-1.686	0.001	-1.265	29.901	10/24/03	10:09:11	11.9377		0.228	-0.001	0.331	29.931
10/24/03	09:57:52	0.6192	-1.144	0.001	-0.676	29.899	10/24/03	10:09:53	12.6418		0.357	-0.001	0.359	29.931
10/24/03	09:57:54	0.6523	-0.176	0.001	0.187	29.897	10/24/03	10:10:38	13.3877		0.400	-0.001	0.244	29.931
10/24/03	09:57:56	0.6875	0.963	0.001	1.035	29.895	10/24/03	10:11:25	14.1777		0.284	-0.003	0.417	29.933
10/24/03	09:57:58	0.7248	1.771	0.001	1.538	29.895	10/24/03	10:12:15	15.0145		0.198	-0.001	0.244	29.933
10/24/03	09:58:00	0.7643	1.853	0.001	1.552	29.893	10/24/03	10:13:09	15.9010		0.297	-0.003	0.331	29.933
10/24/03	09:58:03	0.8062	0.800	0.000	0.460	29.882	10/24/03	10:14:05	16.8400		0.267	-0.001	0.273	29.935
10/24/03	09:58:06	0.8505	-0.378	0.000	-0.431	29.884	10/24/03	10:15:05	17.8347		0.245	-0.003	0.287	29.937
10/24/03	09:58:08	0.8975	-1.049	0.001	-0.805	29.884	10/24/03	10:16:05	18.8347		0.327	-0.001	0.244	29.933
10/24/03	09:58:11	0.9473	-0.598	0.001	-0.287	29.882	10/24/03	10:17:05	19.8347		0.275	-0.001	0.273	29.933
10/24/03	09:58:15	1.0000	0.555	0.001	0.661	29.882	10/24/03	10:18:05	20.8347		0.331	-0.001	0.359	29.935
10/24/03	09:58:18	1.0558	1.281	0.001	1.121	29.884	10/24/03	10:19:05	21.8347		0.288	-0.001	0.244	29.935
10/24/03	09:58:21	1.1150	0.856	0.001	0.589	29.884	10/24/03	10:20:05	22.8347		0.301	-0.003	0.316	29.935
10/24/03	09:58:25	1.1777	-0.215	0.001	-0.230	29.886	10/24/03	10:21:05	23.8347		0.271	-0.003	0.302	29.935
10/24/03	09:58:29	1.2440	-0.585	0.000	-0.287	29.886	10/24/03	10:22:05	24.8347		0.284	-0.001	0.302	29.935
10/24/03	09:58:33	1.3143	0.417	0.000	0.417	29.888	10/24/03	10:23:05	25.8347		0.387	-0.001	0.244	29.935
10/24/03	09:58:38	1.3888	1.028	0.000	0.747	29.888	10/24/03	10:24:05	26.8347		0.271	-0.001	0.331	29.939
10/24/03	09:58:43	1.4678	0.318	0.001	0.172	29.888	10/24/03	10:25:05	27.8347		0.262	-0.001	0.388	29.939
10/24/03	09:58:48	1.5515	-0.314	0.001	-0.172	29.891	10/24/03	10:26:05	28.8347		0.258	-0.001	0.259	29.937
10/24/03	09:58:53	1.6400	0.387	0.001	0.402	29.893	10/24/03	10:27:05	29.8347		0.365	-0.001	0.316	29.939
10/24/03	09:58:59	1.7338	0.598	0.000	0.460	29.893	10/24/03	10:28:05	30.8347		0.215	-0.003	0.431	29.939
10/24/03	09:59:04	1.8332	-0.030	-0.001	-0.101	29.895	10/24/03	10:29:05	31.8347		0.267	-0.001	0.172	29.939
10/24/03	09:59:11	1.9385	0.120	-0.001	0.259	29.893	10/24/03	10:30:05	32.8347		0.408	-0.001	0.302	29.939
10/24/03	09:59:18	2.0500	0.482	0.001	0.345	29.891	10/24/03	10:31:05	33.8347		0.370	-0.003	0.316	29.941
10/24/03	09:59:25	2.1682	-0.004	0.001	-0.014	29.893	10/24/03	10:32:05	34.8347		0.353	-0.001	0.259	29.939
10/24/03	09:59:32	2.2933	0.361	-0.001	0.259	29.893	10/24/03	10:33:05	35.8347		0.314	-0.001	0.187	29.941
10/24/03	09:59:40	2.4258	0.322	-0.001	0.230	29.895	10/24/03	10:34:05	36.8347		0.292	-0.001	0.273	29.939
10/24/03	09:59:48	2.5663	0.163	-0.001	0.201	29.897	10/24/03	10:35:05	37.8347		0.224	-0.001	0.230	29.939
10/24/03	09:59:57	2.7152	0.464	0.000	0.359	29.897	10/24/03	10:36:05	38.8347		0.215	-0.001	0.345	29.939
10/24/03	10:00:07	2.8727	0.090	0.000	0.302	29.880	10/24/03	10:37:05	39.8347		0.365	-0.001	0.302	29.939
10/24/03	10:00:17	3.0395	0.292	-0.001	0.201	29.886	10/24/03	10:38:05	40.8347		0.335	-0.001	0.259	29.941
10/24/03	10:00:27	3.2163	0.344	-0.001	0.230	29.891	10/24/03	10:39:05	41.8347		0.297	-0.003	0.259	29.935
10/24/03	10:00:39	3.4037	0.297	0.000	0.144	29.895	10/24/03	10:40:05	42.8347		0.340	-0.003	0.316	29.935
10/24/03	10:00:51	3.6020	0.327	-0.001	0.115	29.899	10/24/03	10:41:05	43.8347		0.305	-0.001	0.302	29.939
10/24/03	10:01:03	3.8122	0.331	-0.001	0.129	29.903	10/24/03	10:42:05	44.8347		0.305	-0.003	0.316	29.939
10/24/03	10:01:17	4.0348	0.258	0.000	0.345	29.903	10/24/03	10:43:05	45.8347		0.383	-0.003	0.302	29.939
10/24/03	10:01:31	4.2707	0.335	0.000	0.359	29.901	10/24/03	10:44:05	46.8347		0.314	-0.003	0.359	29.941
10/24/03	10:01:46	4.5205	0.331	-0.001	0.388	29.903	10/24/03	10:45:05	47.8347		0.241	-0.003	0.331	29.943

10/24/03	10:46:05	48.8347	0.404	-0.003	0.201	29.941
10/24/03	10:47:05	49.8347	0.284	-0.003	0.474	29.943
10/24/03	10:48:05	50.8347	0.318	-0.003	0.172	29.941
10/24/03	10:49:05	51.8347	0.284	-0.003	0.302	29.943
10/24/03	10:50:05	52.8347	0.275	-0.003	0.172	29.943
10/24/03	10:51:05	53.8347	0.417	-0.003	0.172	29.943
10/24/03	10:52:05	54.8347	0.284	-0.003	0.417	29.948
10/24/03	10:53:05	55.8347	0.404	-0.003	0.331	29.941
10/24/03	10:54:05	56.8347	0.331	-0.003	0.230	29.939
10/24/03	10:55:05	57.8347	0.413	-0.003	0.259	29.943
10/24/03	10:56:05	58.8347	0.378	-0.003	0.216	29.945
10/24/03	10:57:05	59.8347	0.275	-0.001	0.388	29.945
10/24/03	10:58:05	60.8347	0.301	-0.001	0.273	29.943
10/24/03	10:59:05	61.8347	0.383	-0.003	0.345	29.945
10/24/03	11:00:05	62.8347	0.322	-0.001	0.345	29.943
10/24/03	11:01:05	63.8347	0.374	-0.003	0.359	29.943
10/24/03	11:02:05	64.8347	0.357	-0.001	0.287	29.945
10/24/03	11:03:05	65.8347	0.374	-0.001	0.302	29.943
10/24/03	11:04:05	66.8347	0.322	-0.001	0.287	29.945
10/24/03	11:05:05	67.8347	0.370	-0.001	0.417	29.945
10/24/03	11:06:05	68.8347	0.370	-0.003	0.201	29.945
10/24/03	11:07:05	69.8347	0.421	-0.003	0.402	29.945
10/24/03	11:08:05	70.8347	0.314	-0.003	0.388	29.945
10/24/03	11:09:05	71.8347	0.387	-0.003	0.244	29.945
10/24/03	11:10:05	72.8347	0.374	-0.001	0.201	29.945
10/24/03	11:11:05	73.8347	0.439	-0.001	0.244	29.945
10/24/03	11:12:05	74.8347	0.417	-0.001	0.172	29.945
10/24/03	11:13:05	75.8347	0.301	-0.001	0.230	29.948
10/24/03	11:14:05	76.8347	0.421	-0.001	0.244	29.945
10/24/03	11:15:05	77.8347	0.322	-0.001	0.431	29.948
10/24/03	11:16:05	78.8347	0.353	-0.001	0.273	29.948
10/24/03	11:17:05	79.8347	0.391	-0.001	0.359	29.948
10/24/03	11:18:05	80.8347	0.365	-0.001	0.287	29.943
10/24/03	11:19:05	81.8347	0.357	-0.003	0.374	29.943
10/24/03	11:20:05	82.8347	0.383	-0.003	0.345	29.945
10/24/03	11:21:05	83.8347	0.417	-0.003	0.417	29.943
10/24/03	11:22:05	84.8347	0.327	-0.003	0.287	29.945
10/24/03	11:23:05	85.8347	0.318	-0.003	0.402	29.945
10/24/03	11:24:05	86.8347	0.275	-0.003	0.417	29.943
10/24/03	11:25:05	87.8347	0.353	-0.003	0.216	29.945
10/24/03	11:26:05	88.8347	0.275	-0.004	0.446	29.943
10/24/03	11:27:05	89.8347	0.340	-0.003	0.216	29.948
10/24/03	11:28:05	90.8347	0.327	-0.003	0.402	29.943
10/24/03	11:29:05	91.8347	0.439	-0.003	0.302	29.945
10/24/03	11:30:05	92.8347	0.365	-0.003	0.158	29.945
10/24/03	11:31:05	93.8347	0.258	-0.003	0.374	29.948
10/24/03	11:32:05	94.8347	0.297	-0.003	0.460	29.948
10/24/03	11:33:05	95.8347	0.370	-0.003	0.345	29.945
10/24/03	11:34:05	96.8347	0.322	-0.003	0.244	29.945
10/24/03	11:35:05	97.8347	0.439	-0.003	0.345	29.925
10/24/03	11:36:05	98.8347	0.370	-0.003	0.316	29.878



In-Situ Inc. Hermit 3000

Report generated: 04/02/04 11:39:57

Report from file: C:\Win-Situ\Data\SN45532 2003-10-24 113655 Rec2OR0827.bin

DataMgr Version 3.71

Serial number: 00045532

Firmware Version 7.10

Unit name: HERMIT 3000

Test name: Rec2OR0827

Test defined on: 10/23/03 16:02:00

Test started on: 10/24/03 11:36:55

Test stopped on: N/A N/A

Test extracted on: 10/24/03 11:43:46

Data gathered using Logarithmic testing

Maximum time between data points: 1.0000Minutes.

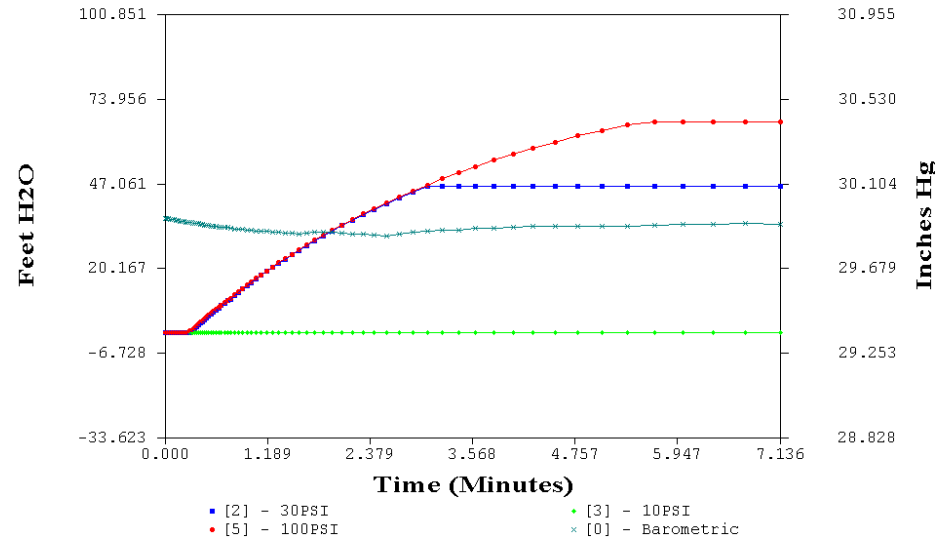
Number of data samples: 80

TOTAL DATA SAMPLES 80

		Date	Time	Chan[2] ET (min)	Chan[3] Feet H2O	Chan[5] Feet H2O	Chan[0] Inches Hg
Channel number [2]							
Measurement type:	Pressure						
Channel name:	30PSI						
Linearity:	0.2466000	10/24/03	11:36:55	0.0000	0.000	0.000	29.854
Scale:	29.6760000	10/24/03	11:36:56	0.0218	-0.718	0.000	29.856
Offset:	-0.0377000	10/24/03	11:36:57	0.0437	-1.088	0.000	29.854
Warmup:	50	10/24/03	11:36:58	0.0655	-1.084	0.000	29.854
Specific gravity:	1.000	10/24/03	11:37:00	0.0873	-0.791	0.000	29.856
Mode:	TOC	10/24/03	11:37:01	0.1092	-0.219	0.001	29.854
User-defined reference:	0.000 Feet H2O	10/24/03	11:37:02	0.1310	0.538	0.000	29.852
Referenced on:	test start	10/24/03	11:37:04	0.1528	1.329	0.001	29.852
Pressure head at reference:	21.459 Feet H2O	10/24/03	11:37:05	0.1747	2.012	0.000	29.852
		10/24/03	11:37:06	0.1965	2.464	0.000	29.852
		10/24/03	11:37:08	0.2183	2.605	0.000	29.852
		10/24/03	11:37:09	0.2402	2.412	0.000	29.852
		10/24/03	11:37:10	0.2620	1.948	0.001	29.852
		10/24/03	11:37:12	0.2838	1.290	0.001	29.850
		10/24/03	11:37:13	0.3057	0.568	0.000	29.850
		10/24/03	11:37:14	0.3275	-0.077	0.001	29.850
		10/24/03	11:37:15	0.3493	-0.546	0.000	29.850
		10/24/03	11:37:17	0.3712	-0.770	0.000	29.848
		10/24/03	11:37:18	0.3930	-0.723	0.001	29.848
		10/24/03	11:37:19	0.4148	-0.413	0.000	29.848
		10/24/03	11:37:21	0.4367	0.077	0.000	29.848
		10/24/03	11:37:22	0.4588	0.697	0.000	29.846
		10/24/03	11:37:23	0.4823	1.277	0.001	29.846
		10/24/03	11:37:25	0.5072	1.767	0.001	29.846
		10/24/03	11:37:27	0.5335	2.034	0.000	29.846
		10/24/03	11:37:28	0.5615	1.991	0.001	29.846
		10/24/03	11:37:30	0.5912	1.604	0.001	29.846
		10/24/03	11:37:32	0.6225	0.959	0.001	29.844
		10/24/03	11:37:34	0.6557	0.249	0.000	29.846
		10/24/03	11:37:36	0.6908	-0.271	0.001	29.844
		10/24/03	11:37:38	0.7282	-0.387	0.001	29.844
		10/24/03	11:37:41	0.7677	-0.194	0.001	29.842
		10/24/03	11:37:43	0.8095	0.856	0.001	29.842
		10/24/03	11:37:46	0.8538	1.565	0.001	29.842
		10/24/03	11:37:49	0.9008	1.660	0.001	29.842
		10/24/03	11:37:52	0.9507	1.019	0.003	29.842
		10/24/03	11:37:55	1.0033	0.159	0.003	29.840
		10/24/03	11:37:58	1.0592	-0.125	0.003	29.840
		10/24/03	11:38:02	1.1183	0.477	0.003	29.840
		10/24/03	11:38:05	1.1810	1.333	0.001	29.838
		10/24/03	11:38:09	1.2473	1.337	0.003	29.838
		10/24/03	11:38:14	1.3177	0.482	0.003	29.834
		10/24/03	11:38:18	1.3922	0.069	0.001	29.836
		10/24/03	11:38:23	1.4712	0.787	0.003	29.836
		10/24/03	11:38:28	1.5548	1.303	0.003	29.834
		10/24/03	11:38:33	1.6433	0.598	0.001	29.834
		10/24/03	11:38:39	1.7372	0.254	0.001	29.831
Channel number [0]							
Measurement type:	Barometric Pressure						
Channel name:	Barometric						
Linearity:	0.0000000						
Scale:	0.0000000						
Offset:	0.0000000						
Warmup:	50						

10/24/03	11:38:45	1.8365	1.032	0.001	1.164	29.829	
10/24/03	11:38:51	1.9418	0.894	0.001	0.949	29.829	
10/24/03	11:38:58	2.0533	0.323	0.001	0.561	29.829	
10/24/03	11:39:05	2.1715	0.968	0.001	1.121	29.827	
10/24/03	11:39:12	2.2967	0.718	0.001	0.819	29.825	
10/24/03	11:39:20	2.4292	0.529	0.001	0.762	29.823	
10/24/03	11:39:29	2.5697	0.959	0.001	1.049	29.823	
10/24/03	11:39:38	2.7185	0.477	0.001	0.690	29.821	
10/24/03	11:39:47	2.8760	0.929	0.001	1.049	29.823	
10/24/03	11:39:57	3.0428	0.525	0.000	0.719	29.819	
10/24/03	11:40:08	3.2197	0.882	0.001	0.992	29.819	
10/24/03	11:40:19	3.4070	0.585	0.000	0.776	29.817	
10/24/03	11:40:31	3.6053	0.770	0.001	0.906	29.817	
10/24/03	11:40:43	3.8155	0.748	0.000	0.920	29.815	
10/24/03	11:40:57	4.0382	0.624	-0.001	0.791	29.813	
10/24/03	11:41:11	4.2740	0.748	-0.001	0.891	29.813	
10/24/03	11:41:26	4.5238	0.770	-0.001	0.920	29.811	
10/24/03	11:41:42	4.7885	0.705	0.000	0.862	29.811	
10/24/03	11:41:59	5.0688	0.671	-0.001	0.848	29.807	
10/24/03	11:42:16	5.3657	0.675	-0.001	0.819	29.809	
10/24/03	11:42:35	5.6802	0.688	-0.001	0.819	29.825	
10/24/03	11:42:55	6.0133	0.697	-0.003	0.819	29.819	
10/24/03	11:43:16	6.3662	0.688	-0.001	0.805	29.831	
10/24/03	11:43:39	6.7400	0.692	-0.001	0.819	29.854	
10/24/03	11:44:03	7.1360	0.705	-0.001	0.834	29.848	
10/24/03	11:44:28	7.5553	0.714	-0.003	0.834	29.868	
10/24/03	11:44:54	7.9997	0.701	-0.001	0.819	29.880	
10/24/03	11:45:23	8.4703	0.705	-0.001	0.834	29.891	
10/24/03	11:45:53	8.9688	0.710	-0.001	0.834	29.901	
10/24/03	11:46:24	9.4968	0.705	-0.004	0.834	29.899	
10/24/03	11:46:58	10.0562		0.701	-0.003	0.848	29.903
10/24/03	11:47:33	10.6487		0.705	-0.003	0.862	29.911
10/24/03	11:48:11	11.2762		0.710	-0.001	0.862	29.917

OR0824Test1



In-Situ Inc. Hermit 3000

Report generated: 04/02/0412:02:13
 Report from file: C:\Win-Situ\Data\SN45532 2003-10-24 121550
 OR0824Test1.bin
 DataMgr Version 3.71

Serial number: 00045532
 Firmware Version 7.10
 Unit name: HERMIT 3000

Test name: OR0824Test1

Test defined on: 10/23/0315:58:01
 Test started on: 10/24/0312:15:50
 Test stopped on: N/A N/A
 Test extracted on: 10/24/0312:18:06

Data gathered using Logarithmic testing
 Maximum time between data points: 1.0000 Minutes.

Number of data samples:72

TOTAL DATA SAMPLES 72

Channel number [2]

Measurement type: Pressure
 Channel name: 30PSI
 Linearity: 0.2466000
 Scale: 29.6760000
 Offset: -0.0377000
 Warmup: 50
 Specific gravity: 1.000
 Mode: TOC
 User-defined reference: 0.000 Feet H2O
 Referenced on: test start
 Pressure head at reference: 46.832 Feet H2O

Channel number [3]

Measurement type: Pressure
 Channel name: 10PSI
 Linearity: 0.0039000
 Scale: 10.0201000
 Offset: -0.1328000
 Warmup: 50
 Specific gravity: 1.000
 Mode: TOC
 User-defined reference: 0.000 Feet H2O
 Referenced on: test start
 Pressure head at reference: 2.352 Feet H2O

Channel number [5]

Measurement type: Pressure
 Channel name: 100PSI
 Linearity: 0.3830000
 Scale: 99.4670000
 Offset: -0.2660000
 Warmup: 50
 Specific gravity: 1.000
 Mode: TOC
 User-defined reference: 0.000 Feet H2O
 Referenced on: test start
 Pressure head at reference: 67.995 Feet H2O

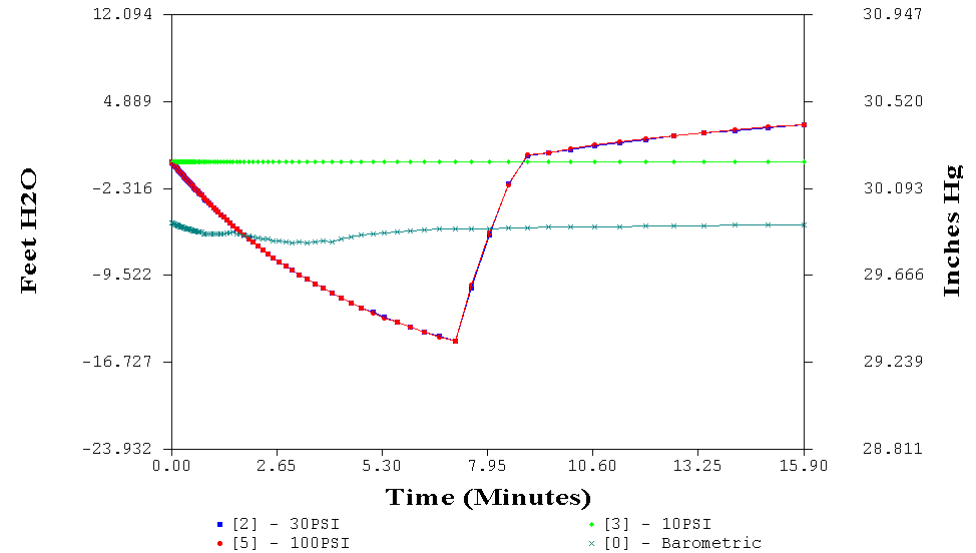
Channel number [0]

Measurement type: Barometric Pressure
 Channel name: Barometric
 Linearity: 0.0000000
 Scale: 0.0000000
 Offset: 0.0000000
 Warmup: 50

Date	Time	ET (min)	Chan[2] Feet H2O	Chan[3] Feet H2O	Chan[5] Feet H2O	Chan[0] Inches Hg
10/24/03	12:15:50	0.0000	0.000	0.000	0.000	29.937
10/24/03	12:15:51	0.0218	0.000	0.000	0.000	29.935
10/24/03	12:15:52	0.0437	0.000	0.000	0.000	29.935
10/24/03	12:15:53	0.0655	0.000	0.000	0.000	29.933
10/24/03	12:15:55	0.0873	0.000	0.000	0.000	29.931
10/24/03	12:15:56	0.1092	0.000	0.000	0.000	29.929
10/24/03	12:15:57	0.1310	0.000	0.000	0.000	29.927
10/24/03	12:15:59	0.1528	0.000	0.000	0.000	29.925
10/24/03	12:16:00	0.1747	0.000	0.000	0.000	29.923
10/24/03	12:16:01	0.1965	0.000	0.000	0.000	29.923
10/24/03	12:16:03	0.2183	0.000	0.000	0.014	29.921
10/24/03	12:16:04	0.2402	-0.004	0.000	0.014	29.917
10/24/03	12:16:05	0.2620	0.000	0.000	0.014	29.915
10/24/03	12:16:07	0.2838	0.000	0.000	0.661	29.915
10/24/03	12:16:08	0.3057	0.251	0.000	0.575	29.915
10/24/03	12:16:09	0.3275	0.835	0.000	1.121	29.913
10/24/03	12:16:10	0.3493	1.410	0.000	1.696	29.911
10/24/03	12:16:12	0.3712	1.973	0.000	2.256	29.909
10/24/03	12:16:13	0.3930	2.526	0.001	2.817	29.909
10/24/03	12:16:14	0.4148	3.080	0.000	3.392	29.907
10/24/03	12:16:16	0.4367	3.620	0.000	3.909	29.905
10/24/03	12:16:17	0.4588	4.191	0.001	4.484	29.903
10/24/03	12:16:18	0.4823	4.783	0.000	5.044	29.901
10/24/03	12:16:20	0.5072	5.310	0.000	5.605	29.901
10/24/03	12:16:22	0.5335	5.923	0.000	6.180	29.899
10/24/03	12:16:23	0.5615	6.546	0.000	6.812	29.899
10/24/03	12:16:25	0.5912	7.224	0.000	7.502	29.895
10/24/03	12:16:27	0.6225	7.906	0.000	8.191	29.893
10/24/03	12:16:29	0.6557	8.623	0.000	8.924	29.893
10/24/03	12:16:31	0.6908	9.374	0.000	9.671	29.891
10/24/03	12:16:33	0.7282	10.173	0.000	10.433	29.891
10/24/03	12:16:36	0.7677	10.704	0.000	10.979	29.886
10/24/03	12:16:38	0.8095	11.964	0.000	12.229	29.880
10/24/03	12:16:41	0.8538	12.930	0.000	13.220	29.882
10/24/03	12:16:44	0.9008	13.909	0.000	14.168	29.882
10/24/03	12:16:47	0.9507	14.935	-0.001	15.246	29.878
10/24/03	12:16:50	1.0033	15.992	0.000	16.323	29.878

10/24/03	12:16:53	1.0592	17.121	0.000	17.429	29.874
10/24/03	12:16:57	1.1183	18.288	0.000	18.550	29.874
10/24/03	12:17:00	1.1810	19.524	0.000	19.785	29.872
10/24/03	12:17:04	1.2473	20.752	0.000	21.034	29.868
10/24/03	12:17:09	1.3177	22.056	0.000	22.341	29.868
10/24/03	12:17:13	1.3922	23.403	0.000	23.677	29.864
10/24/03	12:17:18	1.4712	24.797	0.001	25.070	29.862
10/24/03	12:17:23	1.5548	26.259	0.000	26.506	29.856
10/24/03	12:17:28	1.6433	27.746	0.000	27.971	29.860
10/24/03	12:17:34	1.7372	29.272	0.000	29.493	29.868
10/24/03	12:17:40	1.8365	30.861	0.001	31.072	29.868
10/24/03	12:17:46	1.9418	32.485	0.001	32.695	29.866
10/24/03	12:17:53	2.0533	34.137	0.001	34.374	29.860
10/24/03	12:18:00	2.1715	35.871	0.001	36.083	29.858
10/24/03	12:18:07	2.2967	37.629	0.000	37.834	29.858
10/24/03	12:18:15	2.4292	39.301	0.001	39.628	29.854
10/24/03	12:18:24	2.5697	41.131	0.000	41.466	29.846
10/24/03	12:18:33	2.7185	43.015	0.000	43.303	29.858
10/24/03	12:18:42	2.8760	44.856	0.000	45.197	29.866
10/24/03	12:18:52	3.0428	46.774	0.000	47.120	29.870
10/24/03	12:19:03	3.2197	46.756	0.000	49.057	29.876
10/24/03	12:19:14	3.4070	46.752	0.000	50.994	29.878
10/24/03	12:19:26	3.6053	46.748	0.000	52.946	29.884
10/24/03	12:19:38	3.8155	46.744	0.000	54.897	29.888
10/24/03	12:19:52	4.0382	46.744	0.000	56.877	29.891
10/24/03	12:20:06	4.2740	46.744	0.000	58.842	29.897
10/24/03	12:20:21	4.5238	46.744	0.000	60.778	29.897
10/24/03	12:20:37	4.7885	46.739	0.000	62.700	29.899
10/24/03	12:20:54	5.0688	46.744	0.000	64.249	29.895
10/24/03	12:21:11	5.3657	46.739	0.000	66.142	29.899
10/24/03	12:21:30	5.6802	46.744	-0.001	67.218	29.903
10/24/03	12:21:50	6.0133	46.739	0.000	67.218	29.905
10/24/03	12:22:11	6.3662	46.739	-0.001	67.232	29.907
10/24/03	12:22:34	6.7400	46.744	-0.001	67.232	29.909
10/24/03	12:22:58	7.1360	46.744	0.000	67.232	29.905

Rec1OR0824



In-Situ Inc. Hermit 3000

Report generated: 04/02/0412:03:06
 Report from file: C:\Win-Situ\Data\SN45532 2003-10-24 123120
 Rec1OR0824.bin
 DataMgr Version 3.71

Serial number: 00045532
 Firmware Version 7.10
 Unit name: HERMIT 3000

Test name: Rec1OR0824

Test defined on: 10/23/0316:03:16
 Test started on: 10/24/0312:31:20
 Test stopped on: N/A N/A
 Test extracted on: 10/24/0312:35:02

Data gathered using Logarithmic testing
 Maximum time between data points: 1.0000 Minutes.
 Number of data samples: 86

TOTAL DATA SAMPLES 86

Channel number [2]

Measurement type: Pressure

Channel name: 30PSI

Linearity: 0.2466000

Scale: 29.6760000

Offset: -0.0377000

Warmup: 50

Specific gravity: 1.000

Mode: TOC

User-defined reference: 0.000 Feet H2O

Referenced on: test start

Pressure head at reference: 23.915 Feet H2O

Channel number [3]

Measurement type: Pressure

Channel name: 10PSI

Linearity: 0.0039000

Scale: 10.0201000

Offset: -0.1328000

Warmup: 50

Specific gravity: 1.000

Mode: TOC

User-defined reference: 0.000 Feet H2O

Referenced on: test start

Pressure head at reference: 2.353 Feet H2O

Channel number [5]

Measurement type: Pressure

Channel name: 100PSI

Linearity: 0.3830000

Scale: 99.4670000

Offset: -0.2660000

Warmup: 50

Specific gravity: 1.000

Mode: TOC

User-defined reference: 0.000 Feet H2O

Referenced on: test start

Pressure head at reference: 45.079 Feet H2O

Channel number [0]

Measurement type: Barometric Pressure

Channel name: Barometric

Linearity: 0.0000000

Scale: 0.0000000

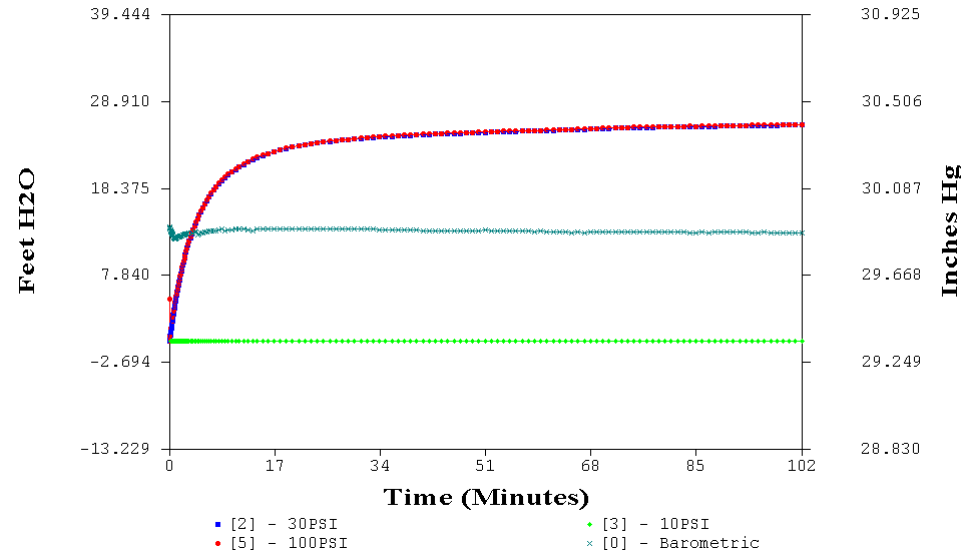
Offset: 0.0000000

Warmup: 50

Date	Time	ET (min)	Chan[2] Feet H2O	Chan[3] Feet H2O	Chan[5] Feet H2O	Chan[0] Inches Hg
10/24/03	12:31:20	0.0000	0.000	0.000	0.000	29.929
10/24/03	12:31:21	0.0218	-0.082	0.000	-0.086	29.929
10/24/03	12:31:22	0.0437	-0.172	0.000	-0.172	29.927
10/24/03	12:31:23	0.0655	-0.258	-0.001	-0.259	29.925
10/24/03	12:31:25	0.0873	-0.349	0.000	-0.359	29.923
10/24/03	12:31:26	0.1092	-0.435	-0.001	-0.431	29.921
10/24/03	12:31:27	0.1310	-0.521	-0.001	-0.517	29.919
10/24/03	12:31:29	0.1528	-0.607	-0.001	-0.603	29.917
10/24/03	12:31:30	0.1747	-0.693	0.000	-0.689	29.915
10/24/03	12:31:31	0.1965	-0.775	-0.001	-0.776	29.913
10/24/03	12:31:33	0.2183	-0.861	0.000	-0.862	29.911
10/24/03	12:31:34	0.2402	-0.947	-0.001	-0.948	29.911
10/24/03	12:31:35	0.2620	-1.029	0.000	-1.034	29.911
10/24/03	12:31:37	0.2838	-1.115	-0.001	-1.120	29.909
10/24/03	12:31:38	0.3057	-1.201	-0.001	-1.192	29.905
10/24/03	12:31:39	0.3275	-1.278	-0.001	-1.278	29.905
10/24/03	12:31:40	0.3493	-1.364	-0.001	-1.364	29.905
10/24/03	12:31:42	0.3712	-1.446	0.000	-1.436	29.901
10/24/03	12:31:43	0.3930	-1.532	-0.001	-1.537	29.899
10/24/03	12:31:44	0.4148	-1.610	0.000	-1.623	29.899
10/24/03	12:31:46	0.4367	-1.696	0.000	-1.695	29.897
10/24/03	12:31:47	0.4588	-1.782	0.000	-1.767	29.897
10/24/03	12:31:48	0.4823	-1.859	0.000	-1.853	29.895
10/24/03	12:31:50	0.5072	-1.945	0.000	-1.953	29.895
10/24/03	12:31:52	0.5335	-2.036	0.000	-2.039	29.891
10/24/03	12:31:53	0.5615	-2.135	0.000	-2.126	29.891
10/24/03	12:31:55	0.5912	-2.230	-0.001	-2.226	29.888
10/24/03	12:31:57	0.6225	-2.337	0.000	-2.341	29.888
10/24/03	12:31:59	0.6557	-2.449	-0.001	-2.442	29.886
10/24/03	12:32:01	0.6908	-2.570	-0.001	-2.571	29.882
10/24/03	12:32:03	0.7282	-2.690	-0.001	-2.700	29.882
10/24/03	12:32:06	0.7677	-2.772	0.000	-2.772	29.882
10/24/03	12:32:08	0.8095	-2.987	-0.001	-2.973	29.872
10/24/03	12:32:11	0.8538	-3.134	-0.001	-3.131	29.872
10/24/03	12:32:14	0.9008	-3.289	-0.001	-3.289	29.874
10/24/03	12:32:17	0.9507	-3.457	-0.001	-3.447	29.874
10/24/03	12:32:20	1.0033	-3.625	-0.001	-3.619	29.876
10/24/03	12:32:23	1.0592	-3.814	-0.001	-3.806	29.874
10/24/03	12:32:27	1.1183	-4.000	-0.001	-3.993	29.874

10/24/03	12:32:30	1.1810	-4.202	-0.001	-4.194	29.876	
10/24/03	12:32:34	1.2473	-4.409	-0.001	-4.409	29.874	
10/24/03	12:32:39	1.3177	-4.628	-0.001	-4.625	29.876	
10/24/03	12:32:43	1.3922	-4.848	-0.001	-4.855	29.878	
10/24/03	12:32:48	1.4712	-5.085	-0.001	-5.085	29.880	
10/24/03	12:32:53	1.5548	-5.335	-0.001	-5.343	29.882	
10/24/03	12:32:58	1.6433	-5.572	0.000	-5.573	29.876	
10/24/03	12:33:04	1.7372	-5.839	0.000	-5.831	29.872	
10/24/03	12:33:10	1.8365	-6.111	-0.001	-6.119	29.866	
10/24/03	12:33:16	1.9418	-6.391	-0.001	-6.406	29.864	
10/24/03	12:33:23	2.0533	-6.688	-0.001	-6.693	29.860	
10/24/03	12:33:30	2.1715	-6.990	-0.001	-6.995	29.854	
10/24/03	12:33:37	2.2967	-7.305	-0.001	-7.311	29.850	
10/24/03	12:33:45	2.4292	-7.632	-0.001	-7.641	29.848	
10/24/03	12:33:54	2.5697	-7.960	-0.001	-7.972	29.842	
10/24/03	12:34:03	2.7185	-8.300	-0.001	-8.302	29.840	
10/24/03	12:34:12	2.8760	-8.658	0.000	-8.661	29.836	
10/24/03	12:34:22	3.0428	-9.016	-0.001	-9.021	29.831	
10/24/03	12:34:33	3.2197	-9.383	0.000	-9.394	29.834	
10/24/03	12:34:44	3.4070	-9.754	0.000	-9.753	29.829	
10/24/03	12:34:56	3.6053	-10.151	-0.001	-10.156	29.834	
10/24/03	12:35:08	3.8155	-10.517	0.000	-10.529	29.840	
10/24/03	12:35:22	4.0382	-10.918	-0.001	-10.931	29.834	
10/24/03	12:35:36	4.2740	-11.311	-0.001	-11.334	29.850	
10/24/03	12:35:51	4.5238	-11.717	-0.001	-11.736	29.860	
10/24/03	12:36:07	4.7885	-12.118	-0.001	-12.138	29.868	
10/24/03	12:36:24	5.0688	-12.524	-0.001	-12.541	29.874	
10/24/03	12:36:41	5.3657	-12.929	-0.001	-12.957	29.880	
10/24/03	12:37:00	5.6802	-13.327	-0.001	-13.345	29.884	
10/24/03	12:37:20	6.0133	-13.728	-0.001	-13.747	29.888	
10/24/03	12:37:41	6.3662	-14.121	-0.001	-14.150	29.893	
10/24/03	12:38:04	6.7400	-14.514	-0.001	-14.538	29.897	
10/24/03	12:38:28	7.1360	-14.894	-0.001	-14.926	29.899	
10/24/03	12:38:53	7.5553	-10.513	-0.003	-10.270	29.901	
10/24/03	12:39:19	7.9997	-6.068	-0.001	-5.932	29.901	
10/24/03	12:39:48	8.4703	-1.855	-0.001	-1.939	29.905	
10/24/03	12:40:18	8.9688	0.482	-0.001	0.531	29.905	
10/24/03	12:40:49	9.4968	0.701	-0.001	0.776	29.909	
10/24/03	12:41:23	10.0562		0.994	-0.001	1.091	29.909
10/24/03	12:41:58	10.6487		1.282	-0.001	1.393	29.911
10/24/03	12:42:36	11.2762		1.545	-0.001	1.680	29.911
10/24/03	12:43:16	11.9410		1.828	-0.003	1.910	29.915
10/24/03	12:43:58	12.6452		2.117	-0.001	2.183	29.913
10/24/03	12:44:43	13.3910		2.375	-0.001	2.413	29.915
10/24/03	12:45:30	14.1810		2.585	-0.003	2.686	29.917
10/24/03	12:46:21	15.0178		2.843	-0.001	2.901	29.919
10/24/03	12:47:14	15.9043		3.037	-0.001	3.088	29.919

OR0824test2



In-Situ Inc. Hermit 3000

Report generated: 04/02/0411:45:32
 Report from file: C:\Win-Situ\Data\SN45532 2003-10-24 133355
 OR0824test2.bin
 DataMgr Version 3.71

Serial number: 00045532
 Firmware Version 7.10
 Unit name: HERMIT 3000

Test name: OR0824test2

Test defined on: 10/23/0315:59:20
 Test started on: 10/24/0313:33:55
 Test stopped on: N/A N/A
 Test extracted on: 10/24/0313:38:16

Data gathered using Logarithmic testing
 Maximum time between data points: 1.0000 Minutes.
 Number of data samples: 172

TOTAL DATA SAMPLES 172

Channel number [2]

Measurement type: Pressure
 Channel name: 30PSI
 Linearity: 0.2466000
 Scale: 29.6760000
 Offset: -0.0377000
 Warmup: 50
 Specific gravity: 1.000
 Mode: TOC
 User-defined reference: 0.000 Feet H2O
 Referenced on: test start
 Pressure head at reference: 46.412 Feet H2O

Channel number [3]

Measurement type: Pressure
 Channel name: 10PSI
 Linearity: 0.0039000
 Scale: 10.0201000
 Offset: -0.1328000
 Warmup: 50
 Specific gravity: 1.000
 Mode: TOC
 User-defined reference: 0.000 Feet H2O
 Referenced on: test start
 Pressure head at reference: 2.378 Feet H2O

Channel number [5]

Measurement type: Pressure
 Channel name: 100PSI
 Linearity: 0.3830000
 Scale: 99.4670000
 Offset: -0.2660000
 Warmup: 50
 Specific gravity: 1.000
 Mode: TOC
 User-defined reference: 0.000 Feet H2O
 Referenced on: test start
 Pressure head at reference: 67.564 Feet H2O

Channel number [0]

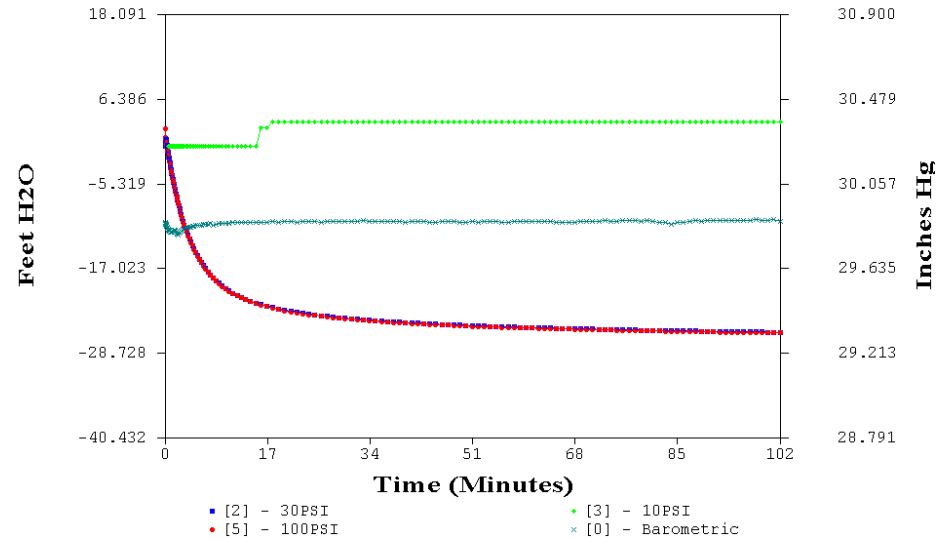
Measurement type: Barometric Pressure
 Channel name: Barometric
 Linearity: 0.0000000
 Scale: 0.0000000
 Offset: 0.0000000
 Warmup: 50

Date	Time	ET (min)	Chan[2] Feet H2O	Chan[3] Feet H2O	Chan[5] Feet H2O	Chan[0] Inches Hg
10/24/03	13:33:55	0.0000	0.000	0.000	0.000	29.907
10/24/03	13:33:56	0.0222	0.013	0.000	0.000	29.905
10/24/03	13:33:57	0.0443	0.013	0.001	0.014	29.903
10/24/03	13:33:58	0.0665	0.017	0.001	5.059	29.901
10/24/03	13:34:00	0.0887	0.095	0.001	0.201	29.899
10/24/03	13:34:01	0.1108	0.238	0.001	0.331	29.897
10/24/03	13:34:02	0.1330	0.402	0.001	0.460	29.895
10/24/03	13:34:04	0.1552	0.519	0.000	0.589	29.895
10/24/03	13:34:05	0.1773	0.658	0.001	0.719	29.893
10/24/03	13:34:06	0.1995	0.787	0.001	0.848	29.891
10/24/03	13:34:08	0.2217	0.921	0.001	0.992	29.888
10/24/03	13:34:09	0.2438	1.038	0.001	1.135	29.886
10/24/03	13:34:10	0.2660	1.181	0.000	1.265	29.886
10/24/03	13:34:12	0.2882	1.285	0.001	1.351	29.882
10/24/03	13:34:13	0.3103	1.419	0.001	1.509	29.880
10/24/03	13:34:14	0.3325	1.574	0.001	1.638	29.880
10/24/03	13:34:16	0.3547	1.678	0.001	1.753	29.878
10/24/03	13:34:17	0.3768	1.817	0.001	1.868	29.876
10/24/03	13:34:18	0.3990	1.925	0.001	1.998	29.876
10/24/03	13:34:20	0.4212	2.037	0.001	2.113	29.874
10/24/03	13:34:21	0.4433	2.163	0.001	2.242	29.874
10/24/03	13:34:22	0.4655	2.266	0.001	2.371	29.872
10/24/03	13:34:24	0.4890	2.387	0.001	2.458	29.868
10/24/03	13:34:25	0.5138	2.526	0.000	2.601	29.870
10/24/03	13:34:27	0.5402	2.686	0.001	2.745	29.866
10/24/03	13:34:29	0.5682	2.803	0.000	2.860	29.866
10/24/03	13:34:30	0.5978	2.958	0.001	3.018	29.864
10/24/03	13:34:32	0.6292	3.092	0.001	3.147	29.862
10/24/03	13:34:34	0.6623	3.282	0.000	3.306	29.860
10/24/03	13:34:36	0.6975	3.386	0.001	3.464	29.860
10/24/03	13:34:39	0.7348	3.555	0.000	3.650	29.854
10/24/03	13:34:41	0.7743	3.697	0.001	3.737	29.858
10/24/03	13:34:43	0.8162	3.983	0.000	4.038	29.848
10/24/03	13:34:46	0.8605	4.160	0.001	4.225	29.850
10/24/03	13:34:49	0.9075	4.367	0.001	4.470	29.850
10/24/03	13:34:52	0.9573	4.622	0.000	4.685	29.852
10/24/03	13:34:55	1.0100	4.847	0.000	4.915	29.850
10/24/03	13:34:58	1.0658	5.080	0.000	5.145	29.852
10/24/03	13:35:02	1.1250	5.344	0.000	5.404	29.852

10/24/03	13:35:06	1.1877	5.616	0.000	5.662	29.852	10/24/03	13:57:45	23.8447	24.024	-0.013	24.079	29.897		
10/24/03	13:35:10	1.2540	5.906	0.000	5.950	29.854	10/24/03	13:58:45	24.8447	24.132	-0.010	24.208	29.897		
10/24/03	13:35:14	1.3243	6.186	0.000	6.251	29.856	10/24/03	13:59:45	25.8447	24.214	-0.013	24.266	29.899		
10/24/03	13:35:18	1.3988	6.489	0.000	6.553	29.856	10/24/03	14:00:45	26.8447	24.278	-0.014	24.352	29.897		
10/24/03	13:35:23	1.4778	6.795	0.000	6.855	29.856	10/24/03	14:01:45	27.8447	24.369	-0.014	24.423	29.897		
10/24/03	13:35:28	1.5615	7.128	0.000	7.185	29.858	10/24/03	14:02:45	28.8447	24.420	-0.016	24.481	29.897		
10/24/03	13:35:34	1.6500	7.430	0.000	7.487	29.862	10/24/03	14:03:45	29.8447	24.510	-0.016	24.553	29.897		
10/24/03	13:35:39	1.7438	7.780	0.000	7.846	29.860	10/24/03	14:04:45	30.8447	24.553	-0.017	24.625	29.895		
10/24/03	13:35:45	1.8432	8.139	0.000	8.163	29.862	10/24/03	14:05:45	31.8447	24.614	-0.017	24.711	29.895		
10/24/03	13:35:51	1.9485	8.480	0.000	8.550	29.864	10/24/03	14:06:45	32.8447	24.674	-0.019	24.754	29.895		
10/24/03	13:35:58	2.0600	8.851	0.000	8.924	29.864	10/24/03	14:07:45	33.8447	24.747	-0.019	24.754	29.893		
10/24/03	13:36:05	2.1782	9.248	0.000	9.298	29.866	10/24/03	14:08:45	34.8447	24.764	-0.019	24.854	29.893		
10/24/03	13:36:13	2.3033	9.619	0.000	9.686	29.868	10/24/03	14:09:45	35.8447	24.837	-0.020	24.883	29.893		
10/24/03	13:36:21	2.4358	10.038	0.000	10.059	29.868	10/24/03	14:10:45	36.8447	24.867	-0.020	24.897	29.893		
10/24/03	13:36:29	2.5763	10.439	0.000	10.476	29.870	10/24/03	14:11:45	37.8447	24.915	-0.020	24.984	29.893		
10/24/03	13:36:38	2.7252	10.845	0.000	10.907	29.872	10/24/03	14:12:45	38.8447	24.966	-0.020	24.984	29.891		
10/24/03	13:36:47	2.8827	11.268	0.000	11.309	29.872	10/24/03	14:13:45	39.8447	24.992	-0.022	25.041	29.893		
10/24/03	13:36:57	3.0495	11.695	0.000	11.754	29.874	10/24/03	14:14:45	40.8447	25.035	-0.023	25.098	29.888		
10/24/03	13:37:08	3.2263	12.131	0.000	12.186	29.876	10/24/03	14:15:45	41.8447	25.061	-0.023	25.098	29.888		
10/24/03	13:37:19	3.4137	12.558	0.000	12.645	29.878	10/24/03	14:16:45	42.8447	25.108	-0.025	25.127	29.888		
10/24/03	13:37:31	3.6120	13.006	0.000	13.076	29.878	10/24/03	14:17:45	43.8447	25.125	-0.026	25.156	29.888		
10/24/03	13:37:44	3.8222	13.459	-0.001	13.493	29.876	10/24/03	14:18:45	44.8447	25.151	-0.027	25.213	29.888		
10/24/03	13:37:57	4.0448	13.929	0.000	13.953	29.880	10/24/03	14:19:45	45.8447	25.156	-0.029	25.213	29.886		
10/24/03	13:38:11	4.2807	14.352	0.000	14.398	29.882	10/24/03	14:20:45	46.8447	25.181	-0.029	25.242	29.886		
10/24/03	13:38:26	4.5305	14.800	0.000	14.843	29.866	10/24/03	14:21:45	47.8447	25.220	-0.029	25.285	29.886		
10/24/03	13:38:42	4.7952	15.253	-0.001	15.303	29.870	10/24/03	14:22:45	48.8447	25.250	-0.030	25.299	29.886		
10/24/03	13:38:59	5.0755	15.688	-0.001	15.734	29.876	10/24/03	14:23:45	49.8447	25.289	-0.030	25.343	29.886		
10/24/03	13:39:17	5.3723	16.124	-0.001	16.165	29.878	10/24/03	14:24:45	50.8447	25.319	-0.030	25.357	29.891		
10/24/03	13:39:36	5.6868	16.576	-0.001	16.625	29.882	10/24/03	14:25:45	51.8447	25.353	-0.030	25.400	29.886		
10/24/03	13:39:56	6.0200	17.011	-0.001	17.070	29.882	10/24/03	14:26:45	52.8447	25.371	-0.032	25.443	29.886		
10/24/03	13:40:17	6.3728	17.442	-0.001	17.501	29.886	10/24/03	14:27:45	53.8447	25.392	-0.032	25.457	29.886		
10/24/03	13:40:39	6.7467	17.864	-0.001	17.917	29.886	10/24/03	14:28:45	54.8447	25.426	-0.032	25.472	29.886		
10/24/03	13:41:03	7.1427	18.286	-0.003	18.348	29.888	10/24/03	14:29:45	55.8447	25.435	-0.032	25.486	29.886		
10/24/03	13:41:28	7.5620	18.683	-0.001	18.750	29.888	10/24/03	14:30:45	56.8447	25.465	-0.032	25.529	29.886		
10/24/03	13:41:55	8.0063	19.096	-0.003	19.138	29.891	10/24/03	14:31:45	57.8447	25.491	-0.032	25.515	29.886		
10/24/03	13:42:23	8.4770	19.462	-0.003	19.540	29.897	10/24/03	14:32:45	58.8447	25.504	-0.035	25.572	29.884		
10/24/03	13:42:53	8.9755	19.828	-0.003	19.871	29.886	10/24/03	14:33:45	59.8447	25.538	-0.035	25.572	29.886		
10/24/03	13:43:25	9.5035	20.155	-0.003	20.230	29.891	10/24/03	14:34:45	60.8447	25.543	-0.035	25.587	29.884		
10/24/03	13:43:58	10.0628			20.500	-0.003	20.560	29.893	10/24/03	14:35:45	61.8447	25.573	-0.036	25.601	29.884
10/24/03	13:44:34	10.6553			20.793	-0.004	20.890	29.895	10/24/03	14:36:45	62.8447	25.590	-0.036	25.630	29.884
10/24/03	13:45:11	11.2828			21.137	-0.004	21.178	29.897	10/24/03	14:37:45	63.8447	25.620	-0.036	25.644	29.884
10/24/03	13:45:51	11.9477			21.425	-0.004	21.494	29.897	10/24/03	14:38:45	64.8447	25.624	-0.036	25.673	29.878
10/24/03	13:46:34	12.6518			21.727	-0.004	21.781	29.893	10/24/03	14:39:45	65.8447	25.650	-0.038	25.716	29.882
10/24/03	13:47:18	13.3977			22.024	-0.006	22.054	29.888	10/24/03	14:40:45	66.8447	25.689	-0.038	25.730	29.878
10/24/03	13:48:06	14.1877			22.269	-0.006	22.312	29.895	10/24/03	14:41:45	67.8447	25.719	-0.038	25.773	29.882
10/24/03	13:48:56	15.0245			22.510	-0.007	22.542	29.895	10/24/03	14:42:45	68.8447	25.732	-0.039	25.816	29.882
10/24/03	13:49:49	15.9110			22.747	-0.007	22.772	29.897	10/24/03	14:43:45	69.8447	25.766	-0.039	25.831	29.880
10/24/03	13:50:46	16.8500			22.953	-0.009	22.987	29.897	10/24/03	14:44:45	70.8447	25.783	-0.039	25.860	29.882
10/24/03	13:51:45	17.8447			23.155	-0.009	23.217	29.895	10/24/03	14:45:45	71.8447	25.822	-0.040	25.860	29.882
10/24/03	13:52:45	18.8447			23.349	-0.012	23.418	29.897	10/24/03	14:46:45	72.8447	25.844	-0.040	25.874	29.882
10/24/03	13:53:45	19.8447			23.530	-0.012	23.562	29.899	10/24/03	14:47:45	73.8447	25.848	-0.042	25.903	29.882
10/24/03	13:54:45	20.8447			23.672	-0.012	23.720	29.897	10/24/03	14:48:45	74.8447	25.869	-0.042	25.946	29.882
10/24/03	13:55:45	21.8447			23.792	-0.012	23.849	29.895	10/24/03	14:49:45	75.8447	25.874	-0.042	25.960	29.882
10/24/03	13:56:45	22.8447			23.908	-0.010	23.978	29.897	10/24/03	14:50:45	76.8447	25.925	-0.043	25.960	29.880

10/24/03	14:51:45	77.8447	25.921	-0.043	25.974	29.882
10/24/03	14:52:45	78.8447	25.942	-0.043	25.974	29.882
10/24/03	14:53:45	79.8447	25.968	-0.043	26.018	29.882
10/24/03	14:54:45	80.8447	25.968	-0.043	26.018	29.882
10/24/03	14:55:45	81.8447	25.994	-0.045	26.032	29.880
10/24/03	14:56:45	82.8447	25.990	-0.046	26.046	29.880
10/24/03	14:57:45	83.8447	26.007	-0.046	26.075	29.876
10/24/03	14:58:45	84.8447	26.011	-0.046	26.061	29.878
10/24/03	14:59:45	85.8447	26.024	-0.049	26.075	29.880
10/24/03	15:00:45	86.8447	26.063	-0.051	26.104	29.878
10/24/03	15:01:45	87.8447	26.041	-0.051	26.104	29.880
10/24/03	15:02:45	88.8447	26.084	-0.051	26.118	29.880
10/24/03	15:03:45	89.8447	26.093	-0.052	26.161	29.880
10/24/03	15:04:45	90.8447	26.106	-0.052	26.161	29.880
10/24/03	15:05:45	91.8447	26.114	-0.053	26.161	29.880
10/24/03	15:06:45	92.8447	26.106	-0.053	26.175	29.880
10/24/03	15:07:45	93.8447	26.132	-0.055	26.219	29.878
10/24/03	15:08:45	94.8447	26.153	-0.055	26.204	29.878
10/24/03	15:09:45	95.8447	26.162	-0.056	26.219	29.880
10/24/03	15:10:45	96.8447	26.183	-0.056	26.204	29.878
10/24/03	15:11:45	97.8447	26.170	-0.058	26.219	29.876
10/24/03	15:12:45	98.8447	26.188	-0.058	26.247	29.876
10/24/03	15:13:45	99.8447	26.192	-0.059	26.276	29.876
10/24/03	15:14:45	100.8447	26.196	-0.059	26.276	29.876
10/24/03	15:15:45	101.8447	26.222	-0.061	26.262	29.876

Rec2OR0824



In-Situ Inc. Hermit 3000

Report generated: 04/02/0411:47:02

Report from file: C:\Win-Situ\Data\SN45532 2003-10-24 151657

Rec2OR0824.bin

DataMgr Version 3.71

Serial number: 00045532

Firmware Version 7.10

Unit name: HERMIT 3000

Test name: Rec2OR0824

Test defined on: 10/23/03 16:08:50

Test started on: 10/24/03 15:16:57

Test stopped on: N/A N/A

Test extracted on: 10/24/03 15:18:40

Data gathered using Logarithmic testing

Maximum time between data points: 1.0000 Minutes.

Number of data samples: 172

TOTAL DATA SAMPLES 172

Channel number [2]

Measurement type: Pressure
Channel name: 30PSI
Linearity: 0.2466000
Scale: 29.6760000
Offset: -0.0377000
Warmup: 50
Specific gravity: 1.000
Mode: TOC
User-defined reference: 0.000 Feet H2O
Referenced on: test start
Pressure head at reference: 20.190 Feet H2O

Channel number [3]

Measurement type: Pressure
Channel name: 10PSI
Linearity: 0.0039000
Scale: 10.0201000
Offset: -0.1328000
Warmup: 50
Specific gravity: 1.000
Mode: TOC
User-defined reference: 0.000 Feet H2O
Referenced on: test start
Pressure head at reference: 2.438 Feet H2O

Channel number [5]

Measurement type: Pressure
Channel name: 100PSI
Linearity: 0.3830000
Scale: 99.4670000
Offset: -0.2660000
Warmup: 50
Specific gravity: 1.000
Mode: TOC
User-defined reference: 0.000 Feet H2O
Referenced on: test start
Pressure head at reference: 41.259 Feet H2O

Channel number [0]

Measurement type: Barometric Pressure
Channel name: Barometric
Linearity: 0.0000000
Scale: 0.0000000
Offset: 0.0000000
Warmup: 50

Table with 7 columns: Date, Time, ET (min), Chan[2] Feet H2O, Chan[3] Feet H2O, Chan[5] Feet H2O, Chan[0] Inches Hg. It contains 20 rows of data from 10/24/03 15:16:57 to 10/24/03 15:18:04.

10/24/03	15:18:08	1.1843	-4.000	-0.001	-4.064	29.823	10/24/03	15:40:47	23.8413	-23.221	3.460	-23.301	29.874
10/24/03	15:18:12	1.2507	-4.284	-0.001	-4.351	29.823	10/24/03	15:41:47	24.8413	-23.329	3.460	-23.402	29.874
10/24/03	15:18:16	1.3210	-4.577	-0.001	-4.653	29.825	10/24/03	15:42:47	25.8413	-23.424	3.460	-23.502	29.870
10/24/03	15:18:20	1.3955	-4.887	-0.001	-4.940	29.827	10/24/03	15:43:47	26.8413	-23.523	3.460	-23.603	29.874
10/24/03	15:18:25	1.4745	-5.210	-0.001	-5.285	29.829	10/24/03	15:44:47	27.8413	-23.614	3.460	-23.689	29.876
10/24/03	15:18:30	1.5582	-5.541	-0.001	-5.601	29.829	10/24/03	15:45:47	28.8413	-23.696	3.460	-23.775	29.874
10/24/03	15:18:35	1.6467	-5.877	-0.001	-5.946	29.831	10/24/03	15:46:47	29.8413	-23.774	3.460	-23.861	29.874
10/24/03	15:18:41	1.7405	-6.226	-0.001	-6.305	29.827	10/24/03	15:47:47	30.8413	-23.847	3.460	-23.933	29.876
10/24/03	15:18:47	1.8398	-6.592	-0.001	-6.664	29.821	10/24/03	15:48:47	31.8413	-23.917	3.460	-24.005	29.874
10/24/03	15:18:53	1.9452	-6.971	-0.001	-7.037	29.817	10/24/03	15:49:47	32.8413	-23.986	3.460	-24.063	29.878
10/24/03	15:19:00	2.0567	-7.363	-0.003	-7.439	29.813	10/24/03	15:50:47	33.8413	-24.051	3.460	-24.149	29.876
10/24/03	15:19:07	2.1748	-7.772	-0.003	-7.842	29.809	10/24/03	15:51:47	34.8413	-24.111	3.460	-24.192	29.874
10/24/03	15:19:15	2.3000	-8.181	-0.003	-8.244	29.817	10/24/03	15:52:47	35.8413	-24.167	3.460	-24.249	29.874
10/24/03	15:19:22	2.4325	-8.603	-0.003	-8.675	29.821	10/24/03	15:53:47	36.8413	-24.224	3.460	-24.307	29.874
10/24/03	15:19:31	2.5730	-9.034	-0.003	-9.106	29.823	10/24/03	15:54:47	37.8413	-24.276	3.460	-24.364	29.876
10/24/03	15:19:40	2.7218	-9.469	-0.003	-9.537	29.827	10/24/03	15:55:47	38.8413	-24.327	3.460	-24.408	29.874
10/24/03	15:19:49	2.8793	-9.917	-0.003	-9.982	29.831	10/24/03	15:56:47	39.8413	-24.375	3.460	-24.465	29.872
10/24/03	15:19:59	3.0462	-10.374	-0.003	-10.442	29.836	10/24/03	15:57:47	40.8413	-24.423	3.460	-24.508	29.874
10/24/03	15:20:10	3.2230	-10.840	-0.003	-10.901	29.838	10/24/03	15:58:47	41.8413	-24.466	3.460	-24.551	29.874
10/24/03	15:20:21	3.4103	-11.305	-0.003	-11.375	29.840	10/24/03	15:59:47	42.8413	-24.509	3.460	-24.594	29.874
10/24/03	15:20:33	3.6087	-11.771	-0.003	-11.849	29.842	10/24/03	16:00:47	43.8413	-24.548	3.460	-24.638	29.868
10/24/03	15:20:46	3.8188	-12.250	-0.003	-12.323	29.844	10/24/03	16:01:47	44.8413	-24.587	3.460	-24.666	29.872
10/24/03	15:20:59	4.0415	-12.732	-0.004	-12.812	29.846	10/24/03	16:02:47	45.8413	-24.626	3.460	-24.709	29.874
10/24/03	15:21:13	4.2773	-13.207	-0.003	-13.286	29.848	10/24/03	16:03:47	46.8413	-24.665	3.460	-24.738	29.876
10/24/03	15:21:28	4.5272	-13.686	-0.004	-13.746	29.850	10/24/03	16:04:47	47.8413	-24.699	3.460	-24.767	29.874
10/24/03	15:21:44	4.7918	-14.164	-0.003	-14.234	29.852	10/24/03	16:05:47	48.8413	-24.734	3.460	-24.824	29.870
10/24/03	15:22:01	5.0722	-14.630	-0.004	-14.694	29.854	10/24/03	16:06:47	49.8413	-24.769	3.460	-24.853	29.872
10/24/03	15:22:19	5.3690	-15.101	-0.004	-15.168	29.856	10/24/03	16:07:47	50.8413	-24.803	3.460	-24.896	29.874
10/24/03	15:22:38	5.6835	-15.567	-0.004	-15.628	29.856	10/24/03	16:08:47	51.8413	-24.833	3.460	-24.925	29.872
10/24/03	15:22:58	6.0167	-16.028	-0.004	-16.088	29.856	10/24/03	16:09:47	52.8413	-24.864	3.460	-24.954	29.876
10/24/03	15:23:19	6.3695	-16.473	-0.006	-16.547	29.860	10/24/03	16:10:47	53.8413	-24.898	3.460	-24.982	29.874
10/24/03	15:23:41	6.7433	-16.913	-0.004	-16.993	29.862	10/24/03	16:11:47	54.8413	-24.920	3.460	-24.997	29.876
10/24/03	15:24:05	7.1393	-17.345	-0.004	-17.424	29.862	10/24/03	16:12:47	55.8413	-24.946	3.460	-25.026	29.870
10/24/03	15:24:30	7.5587	-17.759	-0.006	-17.840	29.864	10/24/03	16:13:47	56.8413	-24.976	3.460	-25.054	29.872
10/24/03	15:24:57	8.0030	-18.161	-0.006	-18.243	29.856	10/24/03	16:14:47	57.8413	-24.998	3.460	-25.069	29.874
10/24/03	15:25:25	8.4737	-18.554	-0.006	-18.631	29.862	10/24/03	16:15:47	58.8413	-25.032	3.460	-25.112	29.876
10/24/03	15:25:55	8.9722	-18.934	-0.006	-19.019	29.864	10/24/03	16:16:47	59.8413	-25.054	3.460	-25.126	29.876
10/24/03	15:26:27	9.5002	-19.293	-0.006	-19.364	29.866	10/24/03	16:17:47	60.8413	-25.080	3.460	-25.155	29.874
10/24/03	15:27:00	10.0595	-19.642	-0.007	-19.723	29.866	10/24/03	16:18:47	61.8413	-25.106	3.460	-25.184	29.876
10/24/03	15:27:36	10.6520	-19.975	-0.007	-20.053	29.866	10/24/03	16:19:47	62.8413	-25.123	3.460	-25.212	29.876
10/24/03	15:28:13	11.2795	-20.295	-0.007	-20.369	29.868	10/24/03	16:20:47	63.8413	-25.149	3.460	-25.241	29.876
10/24/03	15:28:53	11.9443	-20.597	-0.007	-20.671	29.870	10/24/03	16:21:47	64.8413	-25.162	3.460	-25.256	29.870
10/24/03	15:29:35	12.6485	-20.882	-0.007	-20.959	29.870	10/24/03	16:22:47	65.8413	-25.192	3.460	-25.270	29.868
10/24/03	15:30:20	13.3943	-21.159	-0.009	-21.232	29.870	10/24/03	16:23:47	66.8413	-25.214	3.460	-25.284	29.872
10/24/03	15:31:08	14.1843	-21.414	-0.009	-21.490	29.870	10/24/03	16:24:47	67.8413	-25.231	3.460	-25.313	29.872
10/24/03	15:31:58	15.0212	-21.660	-0.010	-21.749	29.870	10/24/03	16:25:47	68.8413	-25.257	3.460	-25.342	29.876
10/24/03	15:32:51	15.9077	-21.893	2.561	-21.979	29.872	10/24/03	16:26:47	69.8413	-25.275	3.460	-25.356	29.876
10/24/03	15:33:47	16.8467	-22.110	2.550	-22.180	29.872	10/24/03	16:27:47	70.8413	-25.292	3.460	-25.370	29.876
10/24/03	15:34:47	17.8413	-22.317	3.460	-22.410	29.874	10/24/03	16:28:47	71.8413	-25.309	3.460	-25.385	29.876
10/24/03	15:35:47	18.8413	-22.507	3.460	-22.582	29.872	10/24/03	16:29:47	72.8413	-25.331	3.460	-25.414	29.878
10/24/03	15:36:47	19.8413	-22.676	3.460	-22.741	29.874	10/24/03	16:30:47	73.8413	-25.348	3.460	-25.428	29.876
10/24/03	15:37:47	20.8413	-22.831	3.460	-22.913	29.874	10/24/03	16:31:47	74.8413	-25.361	3.460	-25.442	29.876
10/24/03	15:38:47	21.8413	-22.970	3.460	-23.057	29.872	10/24/03	16:32:47	75.8413	-25.383	3.460	-25.457	29.878
10/24/03	15:39:47	22.8413	-23.099	3.460	-23.172	29.874	10/24/03	16:33:47	76.8413	-25.400	3.460	-25.471	29.878

10/24/03	16:34:47	77.8413	-25.413	3.460	-25.485	29.878
10/24/03	16:35:47	78.8413	-25.435	3.460	-25.514	29.874
10/24/03	16:36:47	79.8413	-25.448	3.458	-25.529	29.878
10/24/03	16:37:47	80.8413	-25.461	3.458	-25.557	29.874
10/24/03	16:38:47	81.8413	-25.474	3.458	-25.557	29.870
10/24/03	16:39:47	82.8413	-25.495	3.458	-25.572	29.870
10/24/03	16:40:47	83.8413	-25.508	3.458	-25.586	29.862
10/24/03	16:41:47	84.8413	-25.521	3.458	-25.615	29.868
10/24/03	16:42:47	85.8413	-25.538	3.458	-25.615	29.872
10/24/03	16:43:47	86.8413	-25.551	3.458	-25.629	29.874
10/24/03	16:44:47	87.8413	-25.564	3.458	-25.644	29.878
10/24/03	16:45:47	88.8413	-25.573	3.458	-25.658	29.876
10/24/03	16:46:47	89.8413	-25.586	3.458	-25.672	29.878
10/24/03	16:47:47	90.8413	-25.599	3.458	-25.687	29.878
10/24/03	16:48:47	91.8413	-25.616	3.458	-25.701	29.880
10/24/03	16:49:47	92.8413	-25.629	3.458	-25.715	29.880
10/24/03	16:50:47	93.8413	-25.638	3.458	-25.715	29.878
10/24/03	16:51:47	94.8413	-25.651	3.458	-25.730	29.880
10/24/03	16:52:47	95.8413	-25.660	3.458	-25.744	29.878
10/24/03	16:53:47	96.8413	-25.673	3.458	-25.759	29.878
10/24/03	16:54:47	97.8413	-25.681	3.458	-25.759	29.882
10/24/03	16:55:47	98.8413	-25.694	3.458	-25.773	29.878
10/24/03	16:56:47	99.8413	-25.703	3.458	-25.773	29.880
10/24/03	16:57:47	100.8413	-25.716	3.458	-25.787	29.882
10/24/03	16:58:47	101.8413	-25.724	3.458	-25.802	29.876