

**DOWN
Construction
Preliminary Data
Rock Springs**

**Aquifer System Monitor Wells:
Surficial OR0650
Intermediate OR0651
Floridan OR0652
Floridan OR0662**

SJRWMD Program No. 31-58200

**Division of Ground Water Programs,
Department of Resource Management
St. Johns River Water Management District
Palatka, Florida**

July 14, 1999

*All data, figures, tables and information are provisional and generated for the Division
of Ground Water Program's use.*

Table of Contents

General Site Location

Site Layout

Asbuilt(s)

Ground Water Levels / Drill Rates

Water Quality

Grout

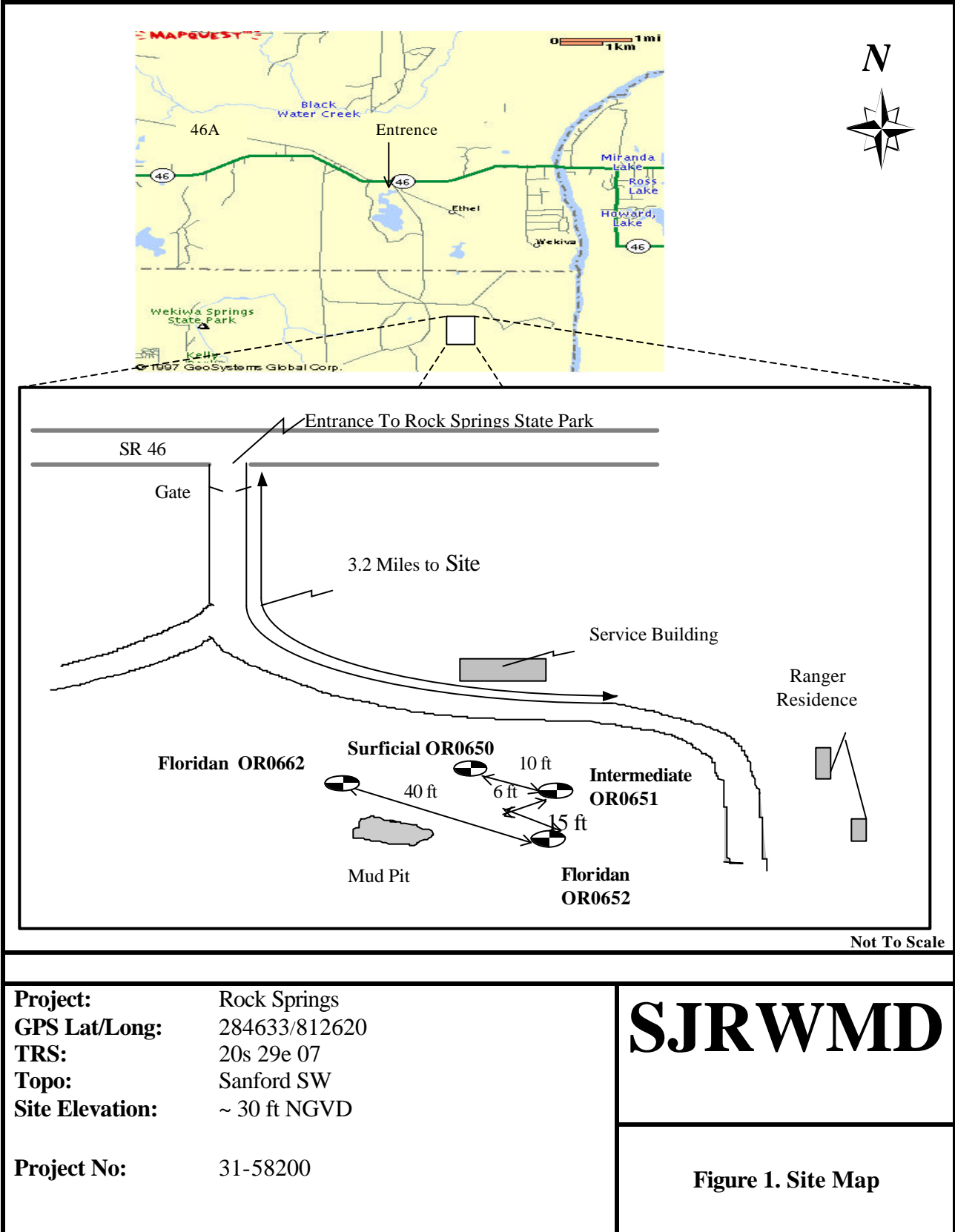
Aquifer Performance Test

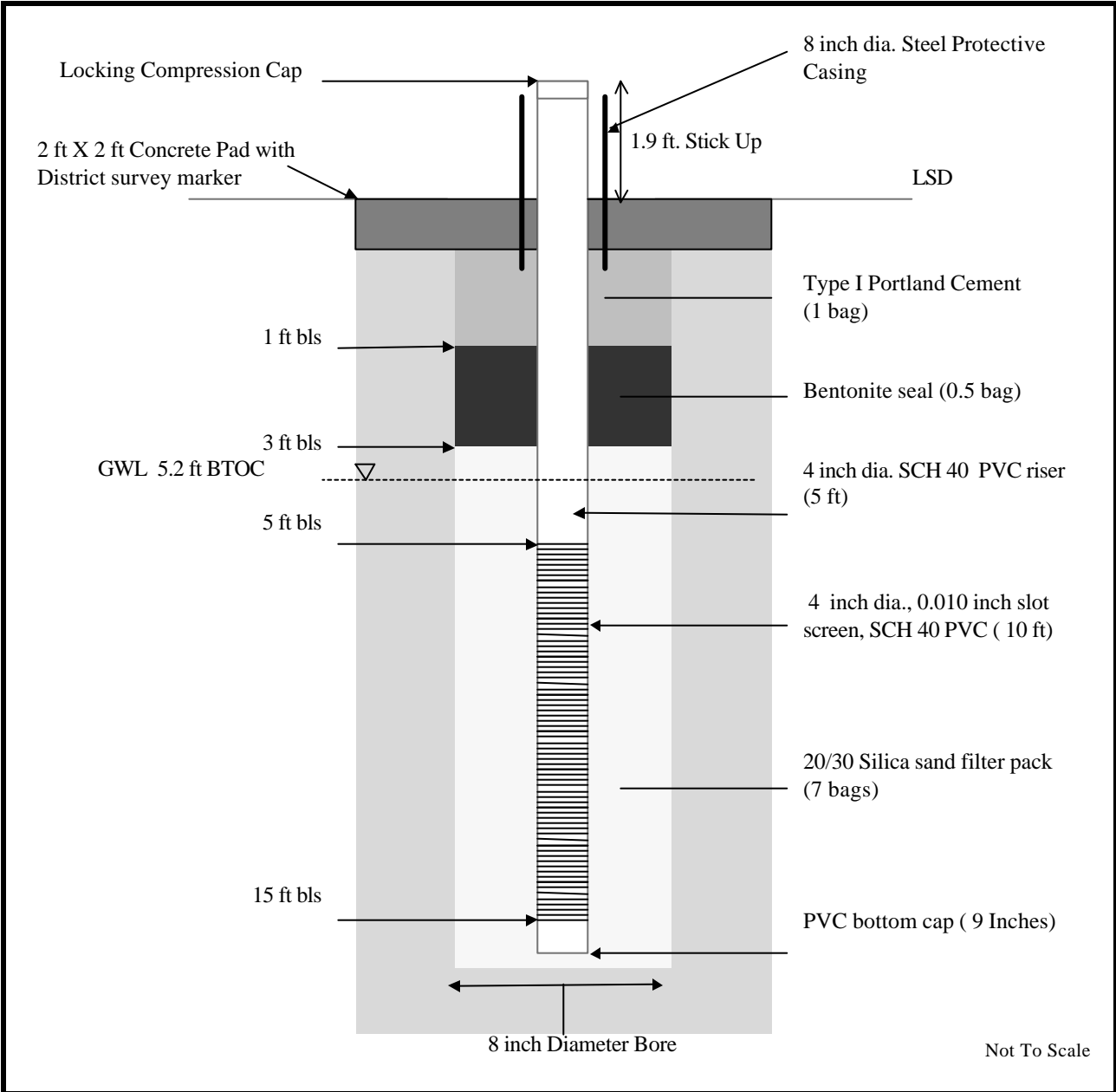
Lithologic Logs

Geophysical Logs

Video Logs

[Suggested format for front matter]





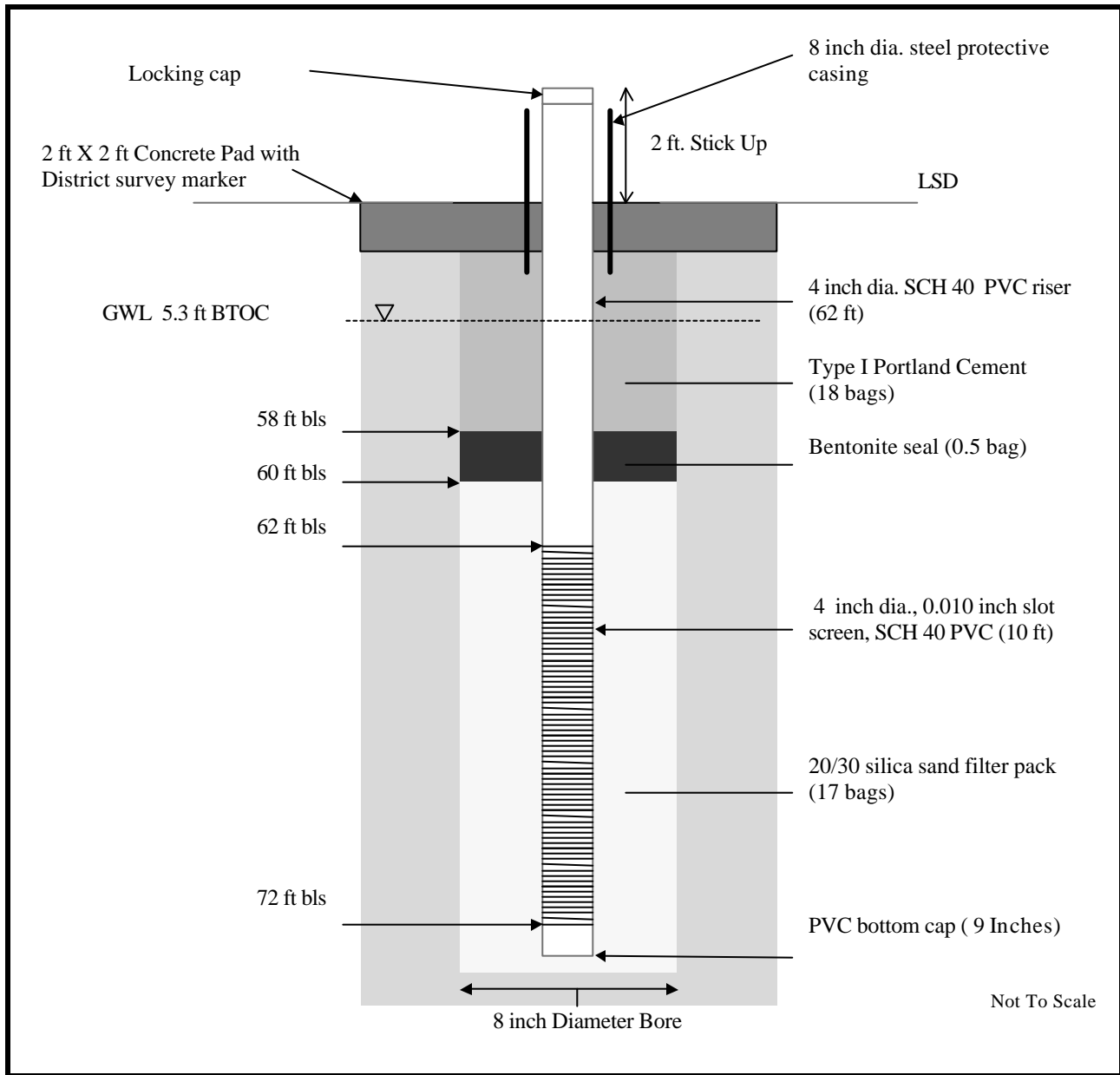
Site: Rock Springs

Driller: Huss Drilling Inc.

Well Completed: January 28, 1997

SJRWMD

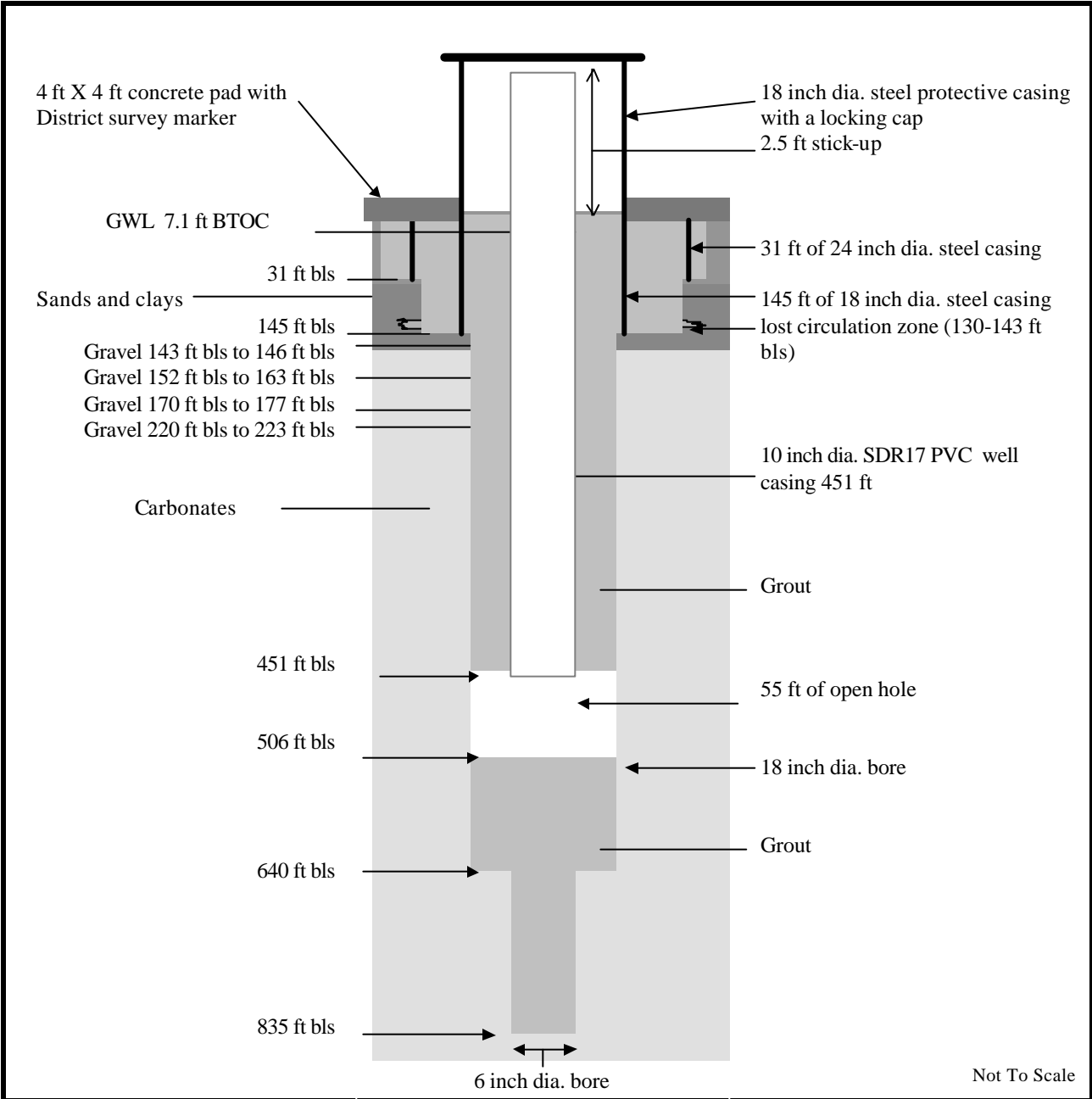
Figure 2. Surficial Monitor Well OR-0650



Site: Rock Springs
Driller: Huss Drilling Inc.
Well Completed: January 28, 1997

SJRWMD

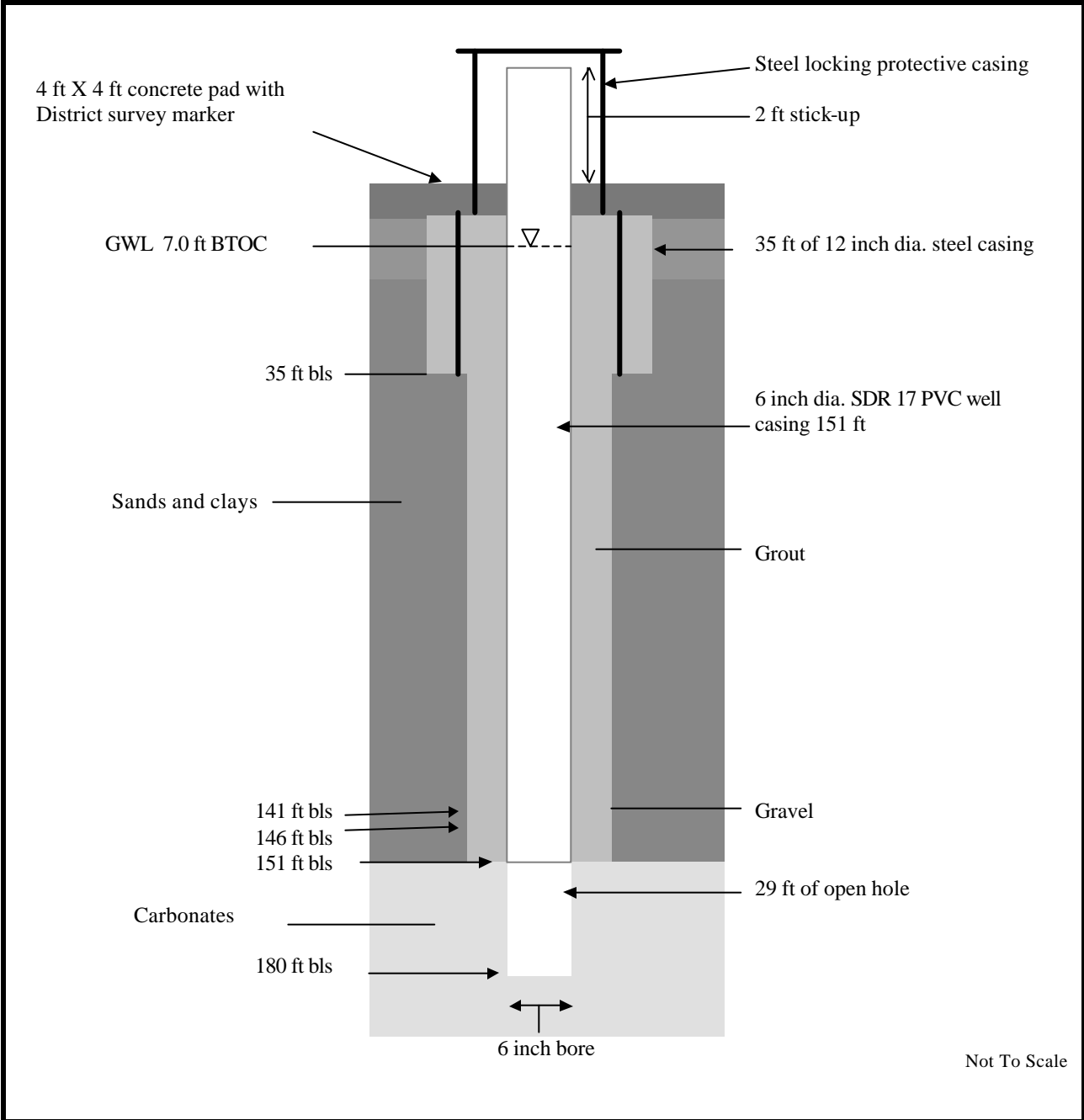
Figure 3. Intermediate Monitor Well OR-0651



Site: Rock Springs
Driller: American Drilling Inc.
Well Completed: June 16, 1997

SJRWMD

Figure 4. Floridan Monitor Well OR0652



Site: Rock Springs

Driller: American Drilling Inc.

Well Completed: June 26, 1997

SJRWMD

Figure 5. Floridan Monitor Well OR0662

Table 1.

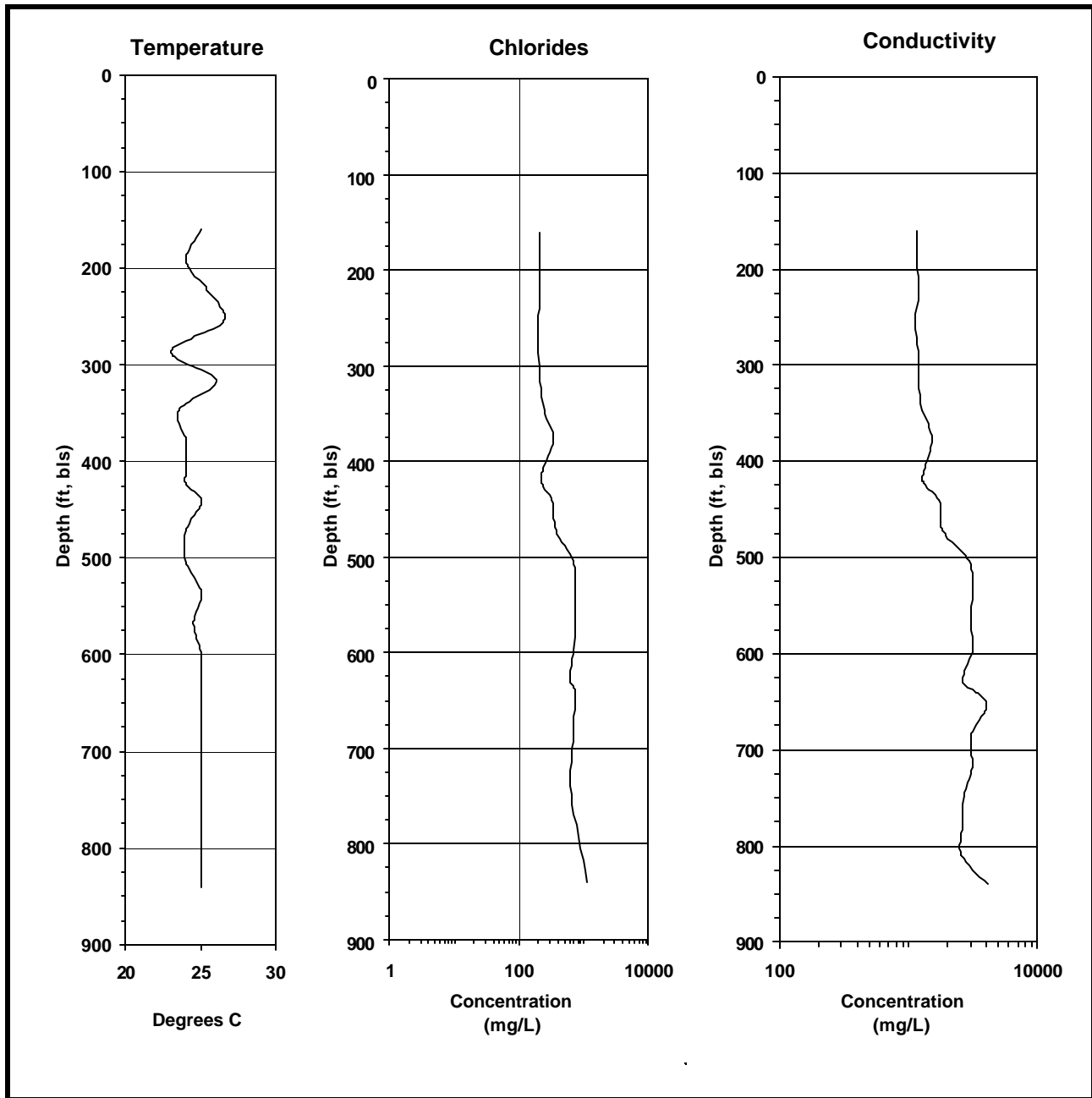
Groundwater Levels and Drilling Data

Site: Rock Springs

Well ID: OR-0652 (Floridan)

| Water Levels | | | | Borehole | | Drilling Data | | | | |
|--------------|----------------------------|---------------------|------------------|-----------------------------|----------------------|-------------------|-------------------|-----------------|---------------|-----------------|
| Static ✓ | Date/Time (yymmdd/hhmm) | Casing (ft, bls) | Rod (ft, bls) | Total Depth (ft, bls) | Open Hole (ft) | Bit Size (in) | From (ft, bls) | To (ft, bls) | Time (min) | Rate (ft/hr) |
| | 970421/1047 | 4.11 | 6.49 | 156 | 11 | 17 ^{7/8} | 156 | 160 | 20 | 12 |
| | 970421/1300 | 4.27 | 4.17 | 160 | 15 | 17 ^{7/8} | 160 | 177 | 110 | 9 |
| ✓ | 970422/0840 | 4.46 | 4.53 | 177 | 22 | 17 ^{7/8} | 177 | 192 | 55 | 25.8 |
| | 970422/1145 | 4.53 | 4.45 | 192 | 47 | 17 ^{7/8} | 192 | 224 | 75 | 7.8 |
| | 970422/1240 | 4.53 | 4.59 | 224 | 79 | 17 ^{7/8} | 224 | 255 | 235 | 19.8 |
| ✓ | 970423/0945 | 4.46 | 4.53 | 255 | 110 | - | - | - | - | - |
| ✓ | 970424/0810 | 4.5 | 4.45 | 255 | 110 | 17 ^{7/8} | 255 | 286 | 95 | 15 |
| | 970424/1130 | 4.55 | 4.41 | 286 | 141 | 17 ^{7/8} | 286 | 316 | 115 | 15.6 |
| | 970424/1513 | 4.53 | 4.33 | 316 | 193 | 17 ^{7/8} | 316 | 346 | 87 | 15 |
| ✓ | 970425/0835 | 5.30 | 5.08 | 346 | 201 | 17 ^{7/8} | 346 | 347 | NR | NR |
| | 970425/1005 | 4.95 | 5.2 | 347 | 202 | 17 ^{7/8} | 347 | 367 | 120 | 14.4 |
| ✓ | 970428/0915 | 4.7 | 4.74 | 367 | 222 | 17 ^{7/8} | 367 | 377 | 40 | 1.5 |
| | 970428/1135 | 4.8 | 5.1 | 377 | 232 | 17 ^{7/8} | 377 | 380 | 25 | 7.2 |
| ✓ | 970429/0840 | 4.8 | 5.0 | 380 | 235 | 17 ^{7/8} | 380 | 411 | 110 | 16.8 |
| | 970429/1455 | 4.8 | 4.8 | 411 | 266 | 17 ^{7/8} | 411 | 423 | 125 | 6 |
| ✓ | 970430/0800 | 4.9 | 5.2 | 423 | 278 | 17 ^{7/8} | 423 | 434 | 120 | 5.4 |
| ✓ | 970501/0800 | 4.8 | 5.0 | 434 | 289 | 17 ^{7/8} | 434 | 439 | 60 | 4.8 |
| ✓ | 970502/1245 | 5.0 | 5.0 | 439 | 294 | 17 ^{7/8} | 439 | 441 | 20 | 6 |
| ✓ | 970505/1030 | 5.3 | 5.3 | 441 | 296 | 17 ^{7/8} | 441 | 470 | 170 | 10.2 |
| ✓ | 970506/0920 | 5.2 | 5.1 | 470 | 325 | 17 ^{7/8} | 470 | 472 | 20 | 6 |
| | 970506/1045 | 5.3 | 5.3 | 472 | 327 | 17 ^{7/8} | 472 | 502 | 200 | 10.2 |
| ✓ | 970507/0820 | 5.3 | 5.65 | 502 | 357 | 17 ^{7/8} | 502 | 504 | 20 | 6.1 |
| | 970507/1030 | 5.4 | 5.6 | 504 | 359 | 17 ^{7/8} | 504 | 535 | 210 | 9.6 |
| | 970507/1635 | 4.9 | 5.8 | 535 | 390 | 17 ^{7/8} | 535 | 568 | 165 | 12 |
| ✓ | 970508/0805 | 5.2 | 5.6 | 535 | 390 | - | - | - | - | - |
| | 970508/1135 | 5.4 | 6.0 | 568 | 423 | 17 ^{7/8} | 568 | 598 | 155 | 11.4 |
| | 970508/1315 | NR | NR | 598 | 453 | 17 ^{7/8} | 598 | 628 | 180 | 10.2 |
| | 970508/1610 | 5.4 | 6.35 | 628 | 483 | 17 ^{7/8} | 628 | 640 | 55 | 13.2 |
| ✓ | 970509/0930 | 5.6 | 5.8 | 640 | 495 | 5 ^{1/2} | 640 | 655 | 15 | 60 |
| | 970519/NR | NR | NR | 655 | 686 | 5 ^{1/2} | 655 | 686 | 26 | 71.4 |
| | 970519/1205 | 5.43 | 6.51 | 686 | 541 | 5 ^{1/2} | 686 | 718 | 21 | 91.2 |
| | 970519/1259 | 5.36 | 7.31 | 718 | 573 | 5 ^{1/2} | 718 | 749 | 33 | 56.4 |
| | 970519/1409 | 5.35 | 8.02 | 749 | 604 | 5 ^{1/2} | 749 | 780 | 28 | 66.6 |
| | 970519/1436 | 5.29 | 8.05 | 780 | 635 | 5 ^{1/2} | 780 | 810 | 28 | 64.2 |
| | 970519/1529 | 5.2 | 8.05 | 810 | 665 | 5 ^{1/2} | 810 | 840 | 40 | 45 |
| ✓ | 970520/0811 | 5.25 | 5.9 | 840 | 695 | - | - | - | - | - |

DRAFT



Site: Rock Springs

Project No: 31-58200

SJRWMD

**Figure 6. Field Groundwater Quality
Floridan Monitor Well OR-0652**

Table 2.**Groundwater Quality**Site: Rock SpringsWell Number: OR-0652 (Floridan)Hydrologist: RBrooks

| LAB ✓ | Date/Time (yy:mm:dd/hh:mm) | Sample Depth (ft, bls) | Open Hole (ft) | Temp (Deg C) | Chlorides (mg/L) | Conductivity (us/cm) |
|----------|-------------------------------|------------------------------|----------------------|-----------------|---------------------|-------------------------|
| ✓ | 970421/1225 | 160 | 15 | 25 | 203 | 1,151 |
| | 970422/1020 | 192 | 47 | 24 | 203 | 1,154 |
| | 970421/1200 | 224 | 79 | 25.5 | 211 | 1,200 |
| | 970421/1700 | 255 | 110 | 26.5 | 198 | 1,127 |
| | 970424/1110 | 286 | 141 | 23 | 201 | 1,186 |
| | 970424/1340 | 316 | 171 | 26 | 212 | 1,189 |
| | 970425/1005 | 347 | 202 | 23.5 | 244 | 1,277 |
| | 970428/1135 | 377 | 232 | 24.0 | 340 | 1,523 |
| | 970429/1050 | 410 | 265 | 24 | 226 | 1,313 |
| | 970429/1700 | 423 | 278 | 24.0 | 220 | 1,313 |
| | 970502/1355 | 441 | 296 | 25 | 324 | 1,725 |
| | 970506/0952 | 472 | 327 | 24 | 368 | 1,828 |
| | 970507/0855 | 504 | 359 | 24 | 672 | 2,942 |
| | 970507/1625 | 535 | 390 | 25 | 716 | 3,090 |
| | 970508/1110 | 568 | 423 | 24.5 | 735 | 3,059 |
| | 970508/1315 | 598 | 453 | 25 | 695 | 3,090 |
| | 970508/1600 | 628 | 483 | 25 | 600 | 2,627 |
| | 970509/1030 | 640 | 495 | 25 | 720 | 3,317 |
| | 970519/1004 | 655 | 510 | NR | NR | 4,000 |
| | 970519/1045 | 686 | 541 | 25 | 686 | 3,039 |
| | 970519/1245 | 718 | 573 | 25 | < 100* | 3,090 |
| | 970519/1400 | 749 | 604 | 25 | 638 | 2,678 |
| | 970519/1428 | 780 | 635 | 25 | NR | 2,600 |
| | 970519/1520 | 810 | 665 | 25 | 400* | 2,575 |
| | 970520/0840 | 840 | 695 | 25 | 1,130 | 4,069 |
| | 970611/1430 | 547 | 97 | 25 | 965 | 3,296 |

* Turbid sample

Table 3.**Groundwater Quality
Downhole Samples****Site:** Rock Springs**Well Number:** OR-0652 (Floridan)**Hydrologist:** RBrooks

| LAB ✓ | Date/Time (yy:mm:dd/hh:mm) | Sample Depth (ft, bls) | Open Hole (ft) | Temp (Deg C) | Chlorides (mg/L) | Conductivity (us/cm) |
|------------------|---------------------------------------|---------------------------------------|-------------------------------|-------------------------|-----------------------------|---------------------------------|
| | 970512/1310 | 630 | 485 | 23.5 | 1130 | 3692 |
| | 970512/1330 | 485 | 340 | 23.5 | 825 | 3798 |
| | 970512/1350 | 475 | 330 | 23.5 | 750 | 3161 |
| | 970512/1400 | 455 | 310 | 23.5 | 680 | 2971 |
| | 970512/1420 | 435 | 290 | 24 | 635 | 2753 |
| | 970512/1435 | 420 | 275 | 24 | 625 | 2752 |
| | 970512/1515 | 395 | 250 | 24 | 635 | 2752 |

Table 4.**Groundwater Quality
After Well Completion****Site:** Rock Springs**Well Numbers:** OR-0650, OR-0651, OR-0652
and OR-0662**Hydrologist:** RBrooks

| LAB ✓ | Date/Time (yyymmdd/hhmm) | Well Number | Sample Depth (ft, bls) | Open Hole (ft, bls) | Screen Interval (ft, bls) | Temp (Deg C) | pH | Chlorides (mg/L) | Conductivity (us/cm) |
|------------------|-------------------------------------|------------------------|---------------------------------------|------------------------------------|--|-------------------------|-----------|-----------------------------|---------------------------------|
| ✓ | 970128/1210 | OR-0650 | 15 | - | 10-15 | 21.0 | 5.7 | NR | 198 |
| ✓ | 970128/1100 | OR-0651 | 72 | - | 62-72 | 23.5 | 7.0 | NR | 658 |
| ✓ | 960616/1310 | OR0652 | 506 | 451-506 | - | 26 | 8.1 | 740 | 2826 |
| ✓ | 960626/1500 | OR0662 | 180 | 151-180 | - | 25 | 8.4 | 245 | 1329 |

Table 5.**Grout Data**

(page 1 of 2)

Site: Rock Springs**Well Number:** OR-0652 (Floridan)

| DATE | TAG DEPTH (ft) | ANNULUS/BORE (inch) | VOLUME (yds/bgs) | MATERIAL | COMMENTS |
|---------|----------------|---------------------|------------------|----------|--|
| 4/4/97 | 31 | B-29 | 48 bgs | grout | Pressure grout 31 ft of 24 inch dia. steel casing |
| 4/7/97 | 1 | A-29 | NA | NA | Tag on the 24 inch dia. casing |
| 4/10/97 | 143 | B-22 | 27 bgs | grout | Back plug lost circulation zone |
| 4/11/97 | 130 | B-22 | NA | NA | Lost circulation zone plugged? |
| 4/15/97 | 145 | B-22 | 90 bgs | grout | Pressure grout 145 ft of 18 inch dia. steel casing |
| 4/16/97 | 120 | A-22 | 90 bgs | grout | Tremie grout 18 inch dia. steel casing |
| 5/21/97 | 835 | B-6 | 180 bgs | grout | Back plug bore via tremie pipe *(6 inch bore 640 ft to 835 ft and 18 inch bore 145 ft to 640 ft) |
| 5/22/97 | 683 | B-6 B-18 | 153 bgs | grout | Back plug bore via tremie pipe |
| 5/23/97 | 547 | B-18 | NA | NA | Tag grout at 547 ft bls |
| 5/28/97 | 547 | B-18 A-18 | 12 yards | sand | Sand used to plug bore below 10 inch dia. PVC casing |
| 5/28/97 | 440 | B-18 | NA | NA | Tag sand inside casing |
| 5/28/97 | 443 | A-18 | 20 bgs | grout | Tag sand out side of casing, Tremie grout 451 ft of 10 inch dia. casing |
| 5/29/97 | 435 | A-18 | 100 bgs | grout | Tremie grout 10 inch dia. casing |
| 5/30/97 | 371 | A-18 | 100 bgs | grout | Tremie grout 10 inch dia. casing |
| 5/31/97 | 340 | A-18 | 100 bgs | grout | Tremie grout 10 inch dia. casing |
| 6/2/97 | 270 | A-18 | 80 bgs | grout | Tremie grout 10 inch dia. casing |
| 6/3/97 | 223 | A-18 | 4 yards | gravel | Fill void from 223 ft to 200 ft bls |
| 6/3/97 | 200 | A-18 | 100 bgs | grout | Tremie grout 10 inch dia. casing |
| 6/4/97 | 177 | A-18 | 1 yard | gravel | Fill void from 177 ft to 170 ft bls |
| 6/4/97 | 170 | A-18 | 50 bgs | grout | Tremie grout 10 inch dia. casing |
| 6/5/97 | 163 | A-18 | 3.5 yards | gravel | Fill void from 152 ft to 145 ft bls |
| 6/5/97 | 138 | A-18 | 100 bgs | grout | Tremie grout 10 inch dia. casing |
| 6/5/97 | 152 | A-18 | NA | NA | Gravel tag after tremie grouting, grout washed out gravel |
| 6/6/97 | 146 | A-18 | 0.2 yards | gravel | Fill void from 146 ft to 145 ft bls |
| 6/6/97 | 143 | A-18 | 100 bgs | grout | Tremie grout 10 inch dia. casing |
| 6/7/97 | 70 | A-18 | 95 bgs | grout | Tremie grout 10 inch dia. casing Theoretical calls for 72 bags |

Table 5.**Grout Data**

(page 2 of 2)

Site: Rock Springs**Well Number:** OR-0652 (Floridan)

| DATE | TAG DEPTH (ft) | ANNULUS/BORE (inch) | VOLUME (yds/bgs) | MATERIAL | COMMENTS |
|---------|----------------|---------------------|------------------|----------|---|
| 6/9/97 | 3 | A-18 | NA | NA | Final tag on 10 inch dia. casing |
| 6/12/97 | 547 | B-18 | 63 bgs | grout | Back plug 18 inch bore |
| 6/13/97 | 529 | B-18 | 47 bgs | grout | Back plug 18 inch bore |
| 6/15/97 | 518 | B-18 | 20 bgs | grout | Back plug 18 inch bore |
| 6/16/97 | 506 | B-18 | NA | NA | Final tag on bore; open hole 451 to 506 |

Table 6.**Grout Data****Site:** Rock Springs**Well Number:** OR-0662 (Floridan)

| DATE | TAG DEPTH (ft) | ANNULUS/BORE (inch) | VOLUME (yds/bgs) | MATERIAL | COMMENTS |
|---------|----------------|---------------------|------------------|----------|---|
| 6/17/97 | 35 | B-17 | 56 bgs | grout | Pressure grout 35 ft of 12 inch dia. steel casing |
| 6/18/97 | 3 | A-17 | NA | NA | Tag on the 24 inch dia. casing |
| 6/19/97 | 151 | B-12 | 42 bgs | grout | Tremie grout 151 ft of 6 inch dia. PVC well casing |
| 6/20/97 | 146 | A-12 | 15 gallons | gravel | Gravel used to fill void |
| 6/20/97 | 144 | A-12 | 42 bgs | grout | Tremie grout PVC well casing |
| 6/23/97 | 145 | A-12 | 5 gallons | gravel | Gravel used to fill void: previous tag of 144, gravel settled after tremie grouting |
| 6/23/97 | 143 | A-12 | 42 bgs | grout | Tremie grout PVC well casing |
| 6/24/97 | 143 | A-12 | 5 gallons | gravel | Tag same as previous day; Gravel used to fill void |
| 6/24/97 | 141 | A-12 | 21 bgs | grout | Tremie grout PVC well casing |
| 6/24/97 | 112 | A-12 | 63 bgs | grout | Tremie grout PVC well casing |
| 6/25/97 | 15 | A-12 | 9 bgs | grout | Tremie grout PVC well casing with return of grout |
| 6/25/97 | LSD | A-12 | NA | NA | PVC well casing grouted to surface |

Table 7. Pumping Data

Site: Rock Springs

Well Number: OR-0650 (Surficial)

Hydrologist: RBrooks

| DATE | GPM | DTW (ft, BTOC) | Drawdown (ft, BTOC) |
|-------------|------------|---------------------------|--------------------------------|
| 970128/1100 | 0 | 4.7 | 0 |
| 970128/1108 | 2 | 7.2 | 2.5 |
| 970128/1120 | 2 | 6.6 | 1.9 |
| 970128/1210 | 2 | 7.0 | 2.3 |

Well developed with 4 inch submersible pump.
Specific capacity 0.9 gpm/ft

Table 8. Pumping Data

Site: Rock Springs

Well Number: OR-0651 (Intermediate)

Hydrologist: RBrooks

| DATE | GPM | DTW (ft, BTOC) | Drawdown (ft, BTOC) |
|-------------|------------|---------------------------|--------------------------------|
| 970128/0845 | 0 | 6.5 | 0 |
| 970128/0851 | 12 | 36.0 | 29.5 |
| 970128/0858 | 12 | 37.5 | 31.0 |
| 970128/0907 | 10 | 35.4 | 28.9 |
| 970128/0938 | 6.5 | 26.6 | 20.1 |
| 970128/0955 | 12 | 41.9 | 35.4 |
| 970128/1005 | 12 | 42.0 | 35.5 |
| 970128/1018 | 12 | 42.4 | 35.9 |
| 970128/1032 | 12 | 42.5 | 36.0 |
| 970128/1045 | 12 | 42.7 | 36.2 |

Well developed with 4 inch submersible pump.
Specific capacity 0.3 gpm/ft

Table 9.**Drawdown /Geophysically Logging**Site: Rock SpringsWell Numbers: OR-0652Hydrologist: RBrooks

| Date/Time (yyymmdd/hhmm) | Time (min) | DTW (ft, bls) | GPM | Comments |
|-------------------------------------|-----------------------|--------------------------|------------|---|
| 970514/0840 | Start pump | 5.23 | 2300 | Run flowmeter log |
| 970514/0845 | 5 | - | 2250 | - |
| 970514/0855 | 15 | 9.38 | 2250 | - |
| 970514/0935 | 50 | 9.4 | 2250 | - |
| 970514/0935 | Stop pump | - | 0 | - |
| 970514/0940 | 5 | 5.39 | 0 | - |
| 970514/0943 | 8 | 5.35 | 0 | - |
| | | | | |
| 970514/1015 | Start pump | 5.33 | 2400 | Run temperature and fluid resistivity logs |
| 970514/1035 | 20 | 8.45 | 2230 | - |
| 970514/1037 | Stop pump | - | 0 | - |
| 970514/1038 | 1 | 5.45 | 0 | - |
| 970514/1040 | 3 | 5.40 | 0 | - |
| 970514/1044 | 7 | 5.40 | 0 | - |

Pump Specs: Turbine with 14 inch diameter bowls and 12 inch diameter stand pipe.
Turbine bowls set at 30 ft bls.

Lithologic Description

(page 1 of 2)

Site: Rock Springs

Well ID: OR-0652

Samples Described By: Rob Brooks, * Alan Story, ** John Sego

| From (ft) | To (ft) | Lithology |
|--------------|------------|--|
| 0 | 14 | Sand, dark gray to brown, fine to medium, organic, |
| 14 | 60 | Clay, green, stiff, minor fine sand and very fine shell, |
| 60 | 70 | Sand, rounded quartz pebbles, opaque, phosphate pebbles, dark green |
| 70 | 110 | Clay, dry, tight, sandy, dark green |
| 110 | 115 | Sandstone, tan, very fine, chert, gray, phosphate pebbles |
| 115 | 120 | Sandstone, tan, very fine, chert, gray, phosphate pebbles and clay, white phosphatic |
| 120 | 125 | Chert, olive green, phosphatic |
| 125 | 130 | Sandstone, tan, very fine |
| 130 | 143 | Clay, grayish white, phosphate pebbles |
| 143 | 156 | No Sample (no return) |
| *156 | 160 | Limestone, light tan, semi-porous, fossiliferous, soft |
| *160 | 167 | Limestone with cemented shell, light tan, semi-porous, hard |
| *167 | 198 | Limestone, light tan, porous, fossiliferous |
| *198 | 216 | Limestone, off white, porous, fossiliferous |
| *216 | 230 | Limestone, light tan, porous, fossiliferous with peat |
| *240 | 251 | Limestone, light tan and creamy white, semi-porous, fossiliferous |
| *251 | 255 | Limestone, creamy white, porous, fossiliferous |
| *255 | 260 | Limestone, white, porous, soft, fossiliferous |
| *260 | 265 | Limestone, light tan and gray, porous, soft, fossiliferous |
| *265 | 277 | Limestone, gray, semi-smooth, semi-hard |
| *277 | 282 | Limestone, light tan and gray, porous, soft, fossiliferous |
| *282 | 285 | Dolomite, medium brown, semi-porous, medium hard, with chert, gray |
| *285 | 292 | Limestone, light tan, porous, semi-soft, fossiliferous |
| *292 | 297 | Dolomite, light brown, semi-porous, medium hard |
| *297 | 306 | Limestone, beige and tan, porous, soft, fossiliferous (<i>Dictyonus</i>) |
| *306 | 314 | Dolomite, medium brown, semi-porous, medium hard |
| *314 | 320 | Limestone, tan to gray, porous, soft, fossiliferous (abundant <i>Dictyonus</i>) |
| *320 | 322 | Limestone, light tan and gray, porous, soft |
| *322 | 328 | Limestone, gray, hard |
| *328 | 330 | Limestone, beige, porous, soft |
| *330 | 332 | Clay, beige |
| *332 | 340 | Limestone, tan, porous, soft |
| 340 | 345 | Clay, gray, stiff |
| 345 | 370 | Limestone, yellowish gray, echinoids, fossil casts and molds, minor peat and small layers of gray clay |

Lithologic Description

(page 2 of 2)

Site: Rock Springs

Well ID: OR-0652

Samples Described By: Rob Brooks, * Alan Story, ** John Sego

| From (ft) | To (ft) | Lithology |
|--------------|------------|---|
| 370 | 385 | Limestone, yellowish gray, echinoids and minor <i>Dictyonus</i> , good primary porosity shell casts, small layers of peat |
| 385 | 390 | Limestone, yellowish gray, and <i>Dictyonus</i> , |
| 390 | 395 | Limestone, yellowish gray, echinoids and minor <i>Dictyonus</i> , good primary porosity shell casts, small layers of peat |
| 395 | 405 | Dolomite, light brown, shell cast and molds, fractures easily |
| 405 | 410 | Limestone, yellowish gray, echinoids, mollusk and <i>Dictyonus</i> , |
| 410 | 420 | Limestone, yellowish gray, echinoids and mollusk, small layers of peat |
| 420 | 430 | Dolomite, brown to olive brown, medium to hard, some shell casts, cherty in areas |
| 430 | 438 | Dolomite, tan, hard, no visible porosity |
| 438 | 440 | Dolomite, brown, medium, medium primary porosity |
| 440 | 450 | Dolomite, brown, hard, cherty, minor peat |
| 450 | 459 | Dolomite, brown, soft to medium, good primary porosity, minor peat |
| 459 | 470 | Dolomite, brown, hard, pin point porosity |
| 470 | 480 | Dolomite, brown, hard, pin point porosity with small layers of dolomite with medium primary porosity, minor peat |
| 480 | 500 | Dolomite, brown to olive brown, hard, pin point porosity, possible fracture zone |
| 500 | 524 | Dolomite, brown to dark olive brown, small areas of gray dolomite, cherty, gray clay in voids |
| 524 | 530 | Dolomite, tan, hard, pin porosity |
| 530 | 535 | Dolomite, tan, semi porous |
| 535 | 540 | Dolomite, gray to tan, medium to soft, minor chert |
| 540 | 550 | Limestone, gray, dolomitic, medium to soft, semi porous |
| 550 | 580 | Limestone, grayish brown, dolomitic, medium to soft, some shell casts, semi porous |
| 580 | 640 | Limestone, gray, wackestone |
| **650 | 655 | Dolomite, tan, pin point porosity, some peat and clay, brown |
| **655 | 686 | Dolomite, brown, hard, little porosity |
| **686 | 707 | Dolomite, brown, hard, granular, pin point porosity |
| **707 | 720 | Dolomite, tan to gray, moldic |
| **720 | 730 | Dolomite, dark tan to brown |
| **730 | 760 | Dolomite, dark tan to brown, pin point and moldic porosity |
| **760 | 810 | Dolomite, dark tan to brown, pin point and moldic porosity; trace pink dolomite, minor peat |
| 810 | 840 | Dolomite, tan, pin point porosity |

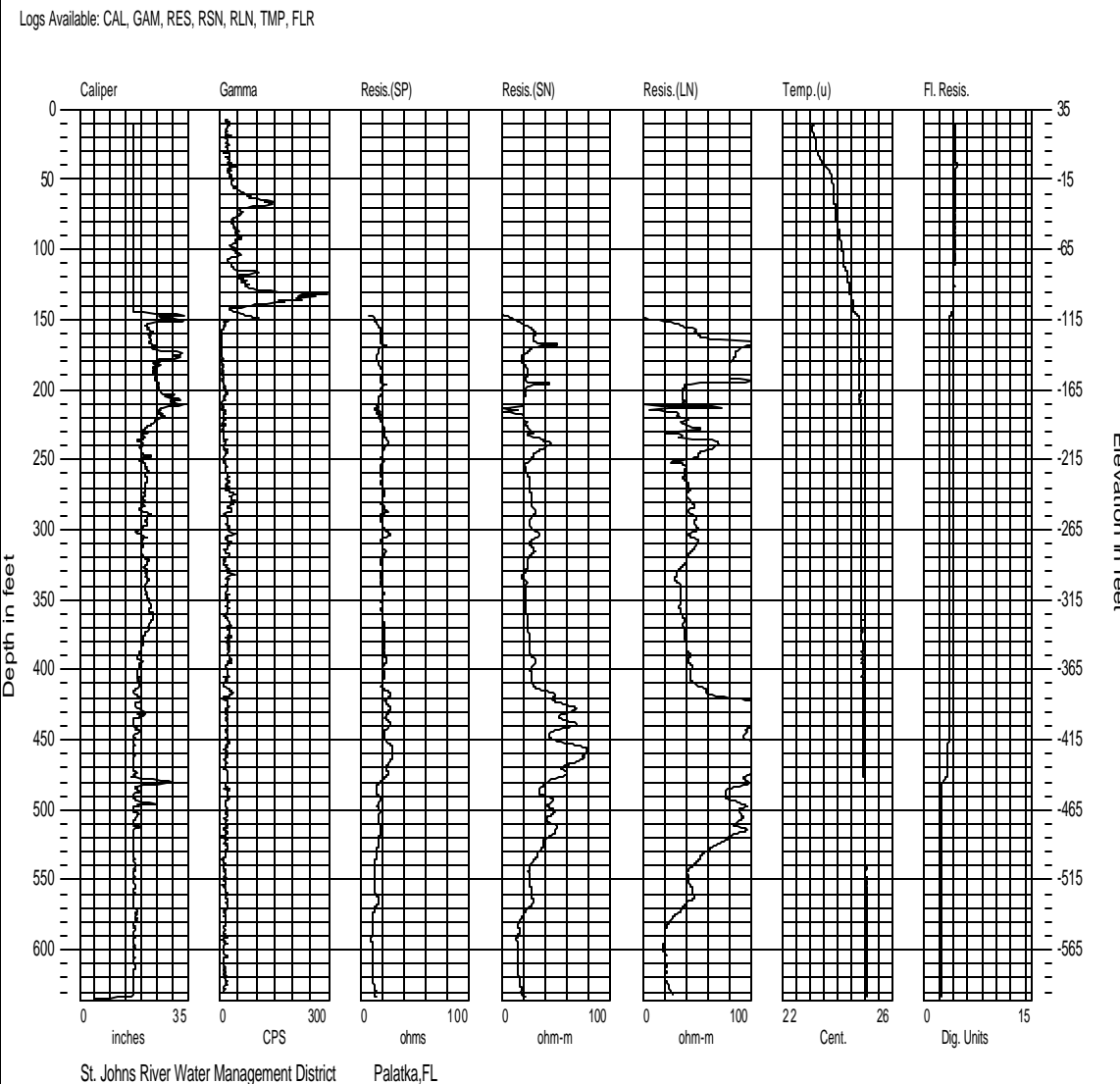
Geophysical Logs

Site: Rock Springs

Monitor Well: OR-0652

Date: 5/12/97

Logger: Shane Dossat



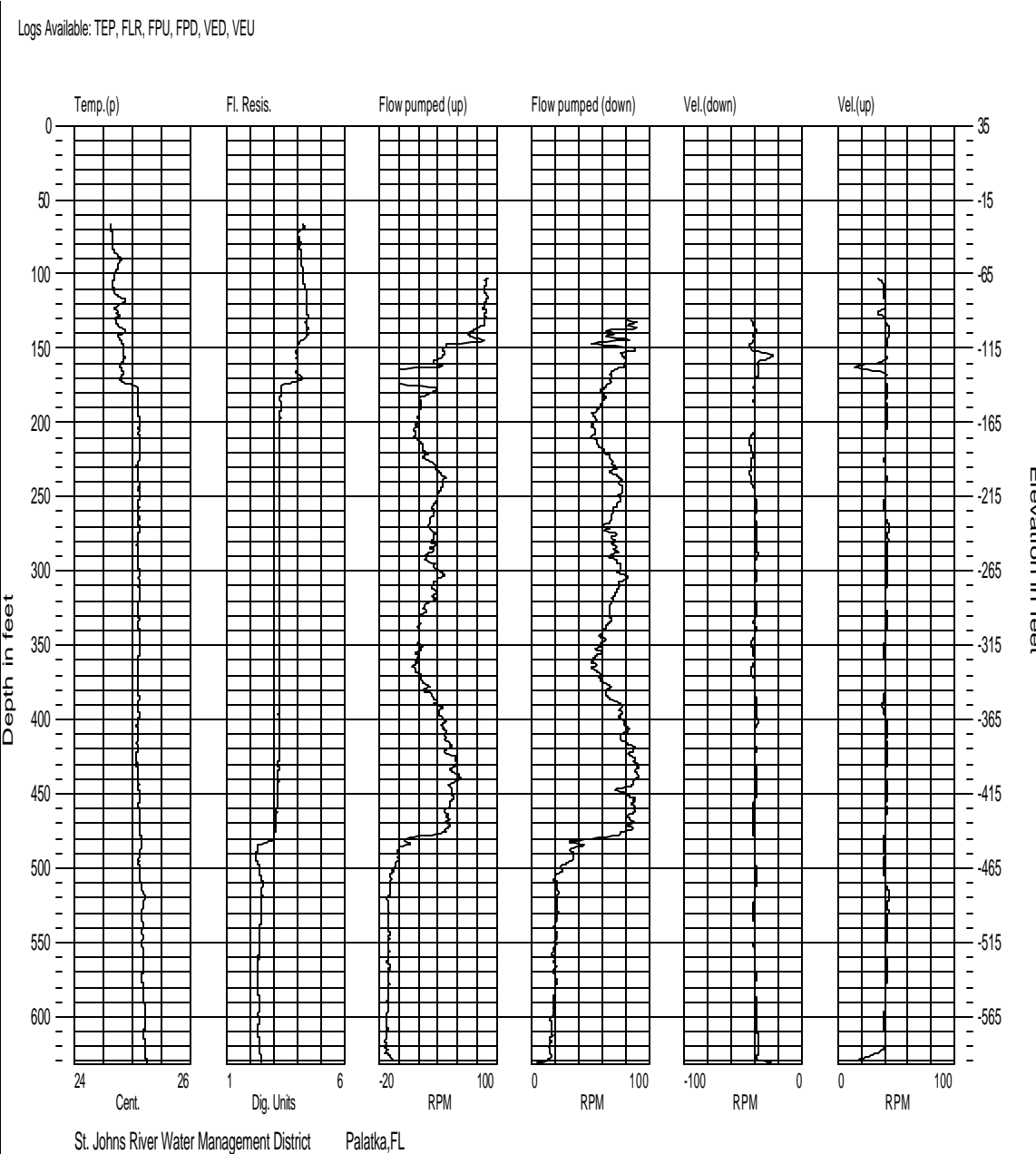
Geophysical Logs

Site: Rock Springs

Monitor Well: OR-0652

Date: 5/14/97

Logger: Shane Dossat



Video Logs Available

| Date | Logger | Well Number | Depth (ft, bls) |
|----------|--------------|-------------|--------------------|
| 05/14/97 | Deep Venture | OR-0652 | 629 |