



RMBAKER LLC

WELL: KIRCOF_GW2
LOG STAGE:

Geology and Geophysics

8600 Oldbridge Lane
Orlando, FL 32819
mobile ph 407-733-8958
fax 407-370-4129

LOGS PROVIDED:
CALIPER
NATURAL GAMMA

rob@rmbaker.com
www.rmbaker.com

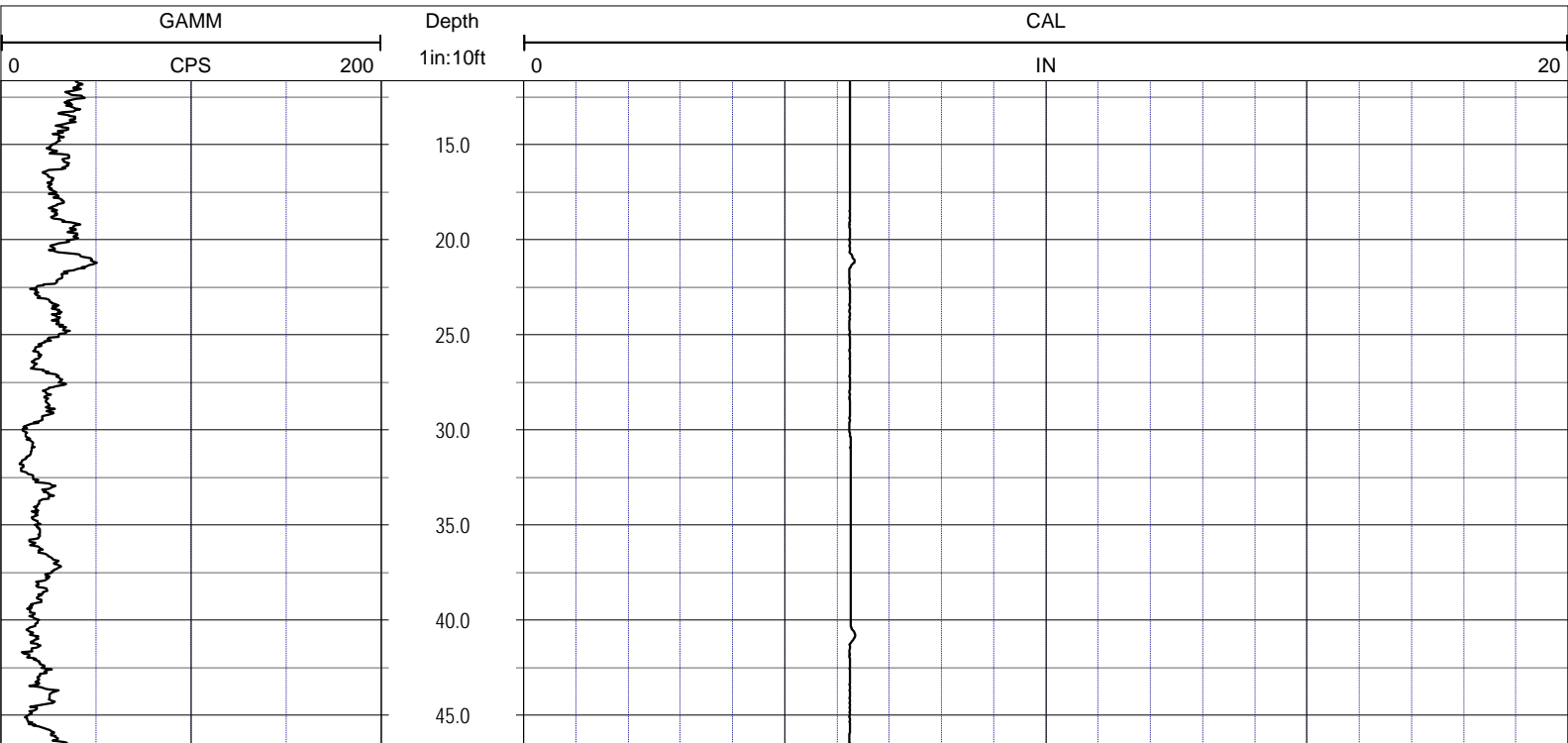
Licensed and Insured

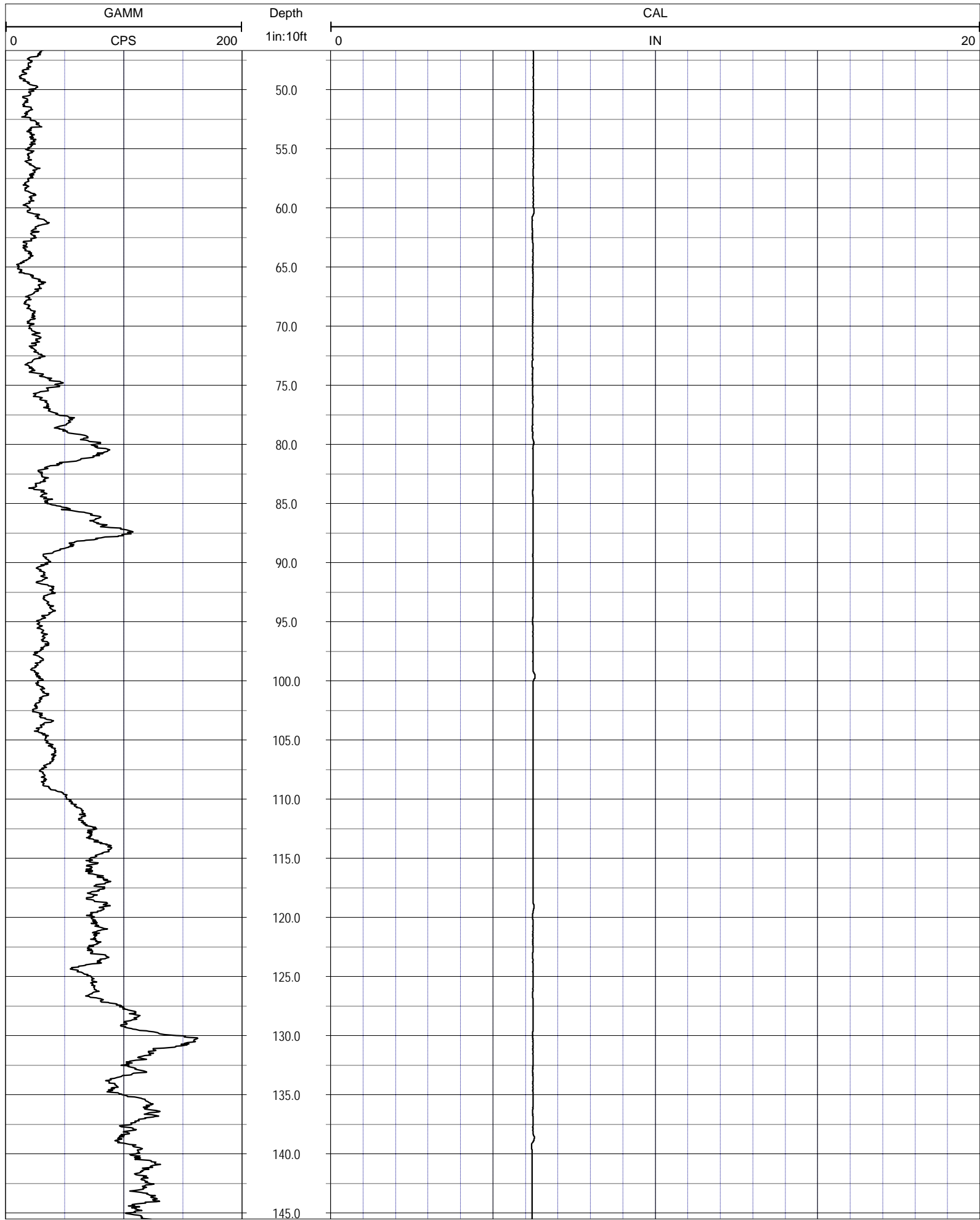
SRVC	RMBAKER LLC	COMPANY:	RMBAKER LLC
UWI	KIRCOF_GW2	WELL NAME:	KIRCOF_GW2
FLD	KIRCOF	FIELD:	KIRCOF
PROV	FL	COUNTRY:	USA
CTY	OSCEOLA	STATE:	FL
		COUNTY:	OSCEOLA
		LOC:	ALL SERVICES:
		N/A	CALIPER
		NOTES:	NATURAL GAMMA
SEC	TWP	RGE	
		ELEVATION:	
		COORDINATES:	

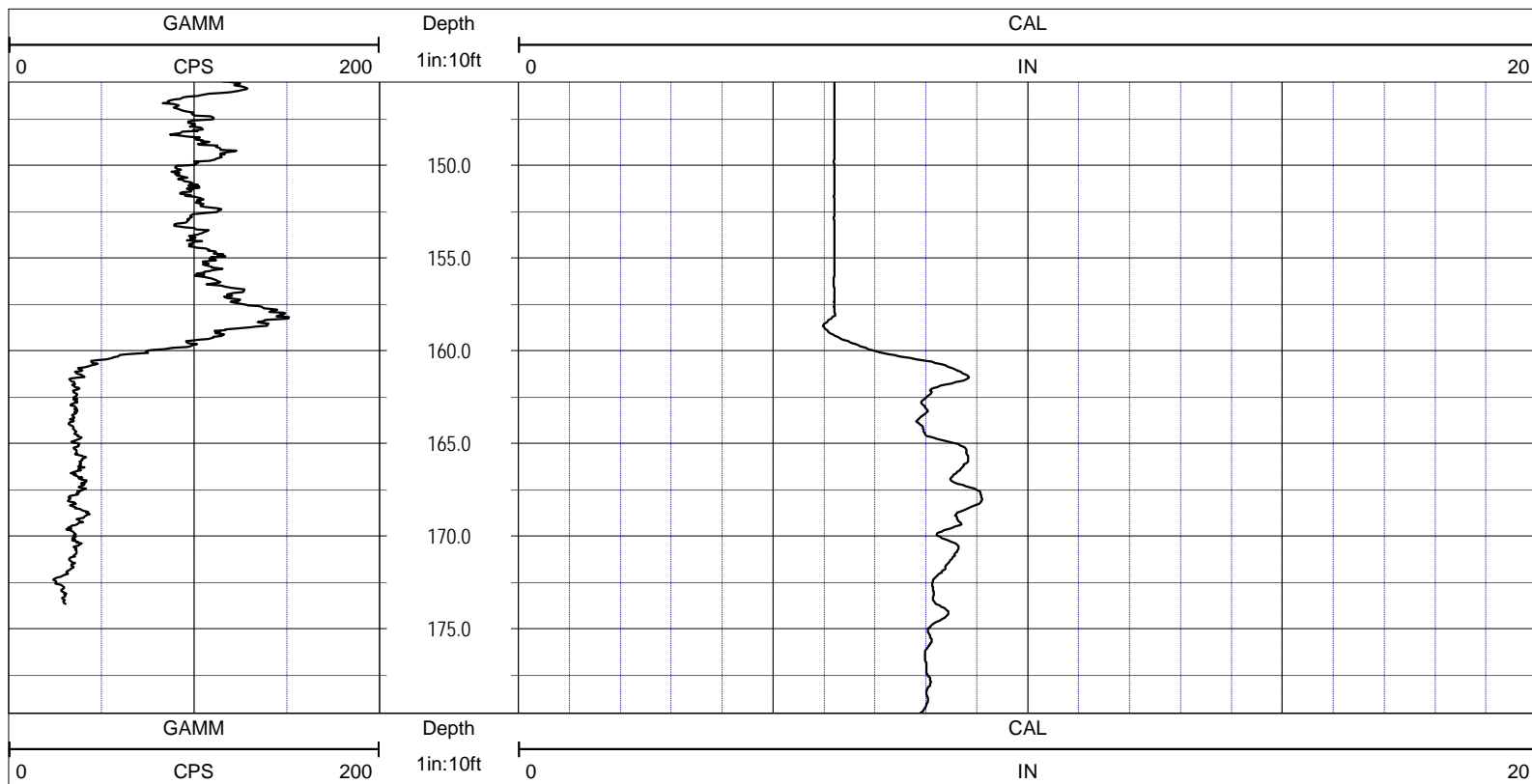
PERMANENT DATUM:
LOG MEAS. FROM: TOC
DRILLING MEAS. FROM:

DATE	23 May 12	TYPE FLUID IN HOLE	
RUN No	1	SALINITY	
TYPE LOG		DENSITY	
DEPTH-DRILLER		LEVEL	
DEPTH-LOGGER	180.9	MAX. REC. TEMP.	
BTM LOGGED INTERVAL		LOGGING SPEED (FT/MIN)	30
TOP LOGGED INTERVAL		TROLLING DIRECTION	UP
DRILLER		PUMPING RATE (GPM)	
RECORDED BY	RMBAKER LLC		
WITNESSED BY			

BOREHOLE RECORD		CASING RECORD					
RUN NO.	BIT	FROM	TO	SIZE	MAT.	FROM	TO
				6	PVC	0	158.6







NOTES:

While due care has been exercised in the performance of these measurements and observations, in accordance with methodologies utilized by the general practitioner, RIMBAKER LLC can make no representations, warranties, or guarantees with respect to latent or concealed conditions that may exist, which may be beyond the detection capabilities of the methodologies used, or that may extend beyond the areas and depths surveyed.
 The geophysical well logs show subsurface conditions as they existed at the dates and locations shown, and it is not warranted that they are representative of subsurface conditions at other locations and times.
 If, at any time, different subsurface conditions from those observed are determined to be present, we must be advised and allowed to review and revise our observations if necessary.

Certificate of Authorization GB 458

END OF LOG