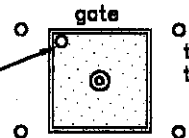


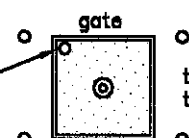


brass disk set flush in corner of concrete pad
 elevation = 72.27
 latitude = 28°17.434'N
 longitude = 081°26.905'W



top 4" pvc = 74.37
 top 12" pvc = 74.63

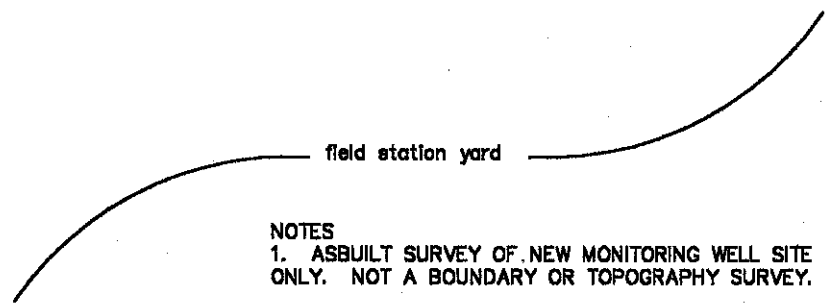
brass disk set flush in corner of concrete pad
 elevation = 72.18
 latitude = 28°17.433'N
 longitude = 081°26.905'W



top 4" pvc = 74.49
 top 12" pvc = 74.60

4' wire fence

5.4' x 5.4' x 6' high chain link fence enclosures with 3 strand barb wire at top and locking gate
 5' x 5' concrete pad with 4" pvc pipe with locking seal cap inside a 12" pvc pipe with end cap



field station yard

NOTES

1. ASBUILT SURVEY OF NEW MONITORING WELL SITE ONLY. NOT A BOUNDARY OR TOPOGRAPHY SURVEY.
2. PVC DENOTES POLYVINYLCHLORIDE PIPES SET AS WELL CASINGS. TYPICAL IS A 4" PIPE WITH A PRESSURE CAP SET INSIDE A 12" PIPE WITH AN END CAP. ELEVATIONS WERE TAKEN AT NORTH RIM WITHOUT CAPS.
3. WELL SITE IS FOUND ON THE SOUTH FLORIDA WATER MANAGEMENT DISTRICT KISSIMMEE FIELD STATION ON HOAGLAND BOULEVARD IN KISSIMMEE, FLORIDA.
4. ELEVATIONS ARE BASED ON SOUTH FLORIDA WATER MANAGEMENT DISTRICT UNPUBLISHED BENCHMARK, A ALUMINUM DISK SET IN THE FOOTER OF A RADIO TOWER AT THE KISSIMMEE FIELD STATION, ELEVATION = 75.84.
5. ELEVATIONS WERE DETERMINED USING A TOPCON AT-G3 AUTO LEVEL. LATITUDE AND LONGITUDE POSITIONS WERE DETERMINED WITH A MAGELLAN MERIDIAN PLATINUM RECEIVER WITH A MANUFACTURER STATED ACCURACY OF THREE METERS.

6' chain link fence

THIS SKETCH MEETS THE MINIMUM TECHNICAL STANDARDS SET FORTH IN FLORIDA ADMINISTRATIVE CODE RULE 61G17-8 PURSUANT TO FLORIDA STATUTES.

Thomas L. Conner 7/23/02

THOMAS L. CONNER
 FLORIDA SURVEYOR AND MAPPER NUMBER 4340
 DATE
 NOT VALID WITHOUT THE SIGNATURE AND ORIGINAL SEAL OF A FLORIDA LICENSED SURVEYOR AND MAPPER.

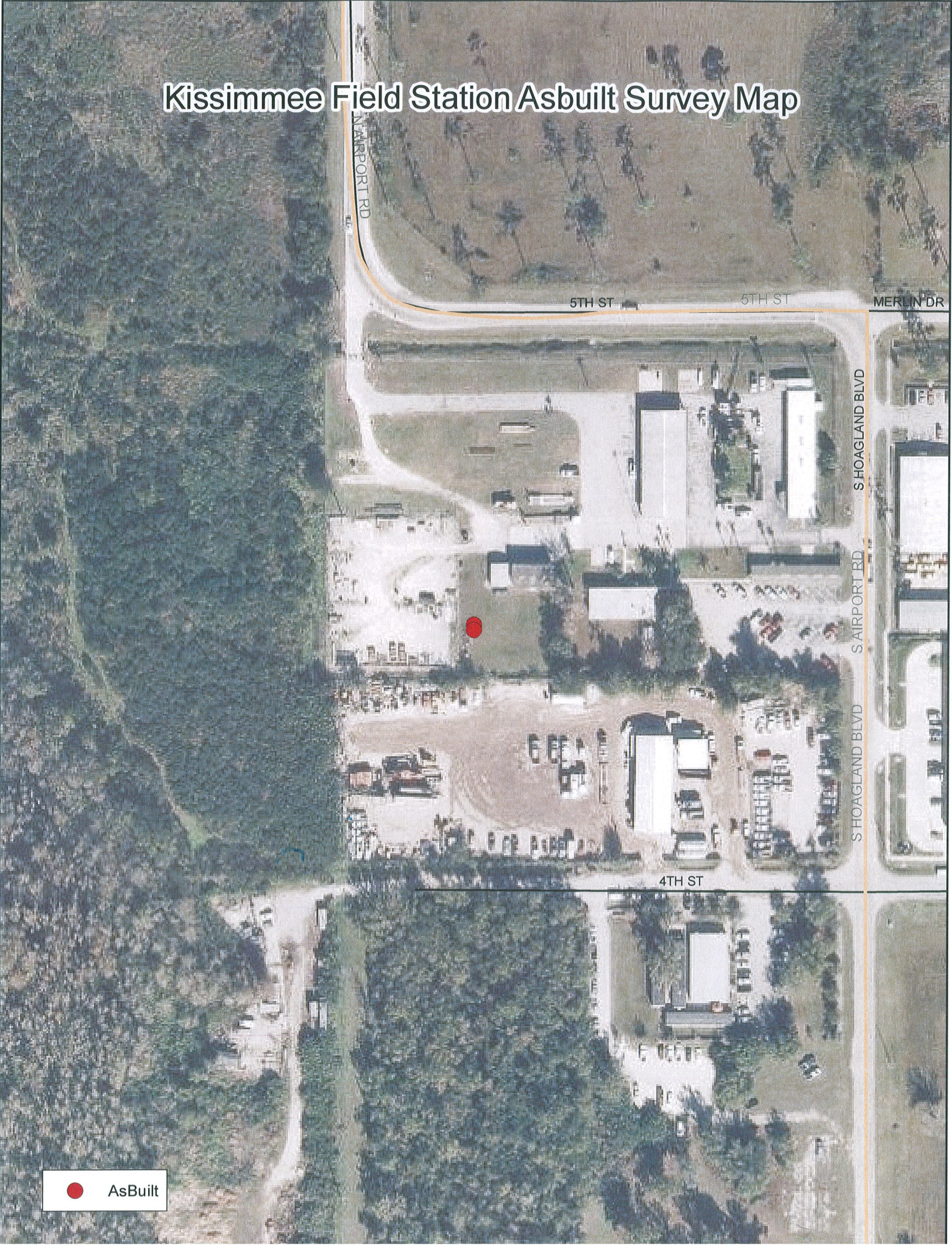
DATE: 6/20/02
 SCALE: 1" = 10'
 DWG. FILE: S65
 PROJ. #: 20123

ASBUILT SURVEY
 SOUTH FLORIDA WATER MANAGEMENT DISTRICT
 KISSIMMEE FIELD STATION
 PREPARED FOR
 ENVIROMENTAL DRILLING SERVICE, INC.

THOMAS L. CONNER, PSM
 SURVEY AND MAPPING CONSULTANT
 5424 SOUTH BRACKEN COURT
 WINTER PARK, FLORIDA 32782-9405
 TELEPHONE: (407) 857-1576
 FLORIDA DEPARTMENT OF BUSINESS AND PROFESSIONAL REGULATION
 BOARD OF PROFESSIONAL SURVEYORS AND MAPPERS
 LICENSE NUMBER L60004340

SHEET NO.: 1 OF 1

Kissimmee Field Station Asbuilt Survey Map



S AIRPORT RD

5TH ST

5TH ST

MERLIN DR

S HOAGLAND BLVD

S AIRPORT RD

S HOAGLAND BLVD

4TH ST

● AsBuilt