

Well No. 208 [W-3368]

Elevation G.L. 11' D.F. 21' K.B.

Location 320 W' & 80' N of Center NWNW

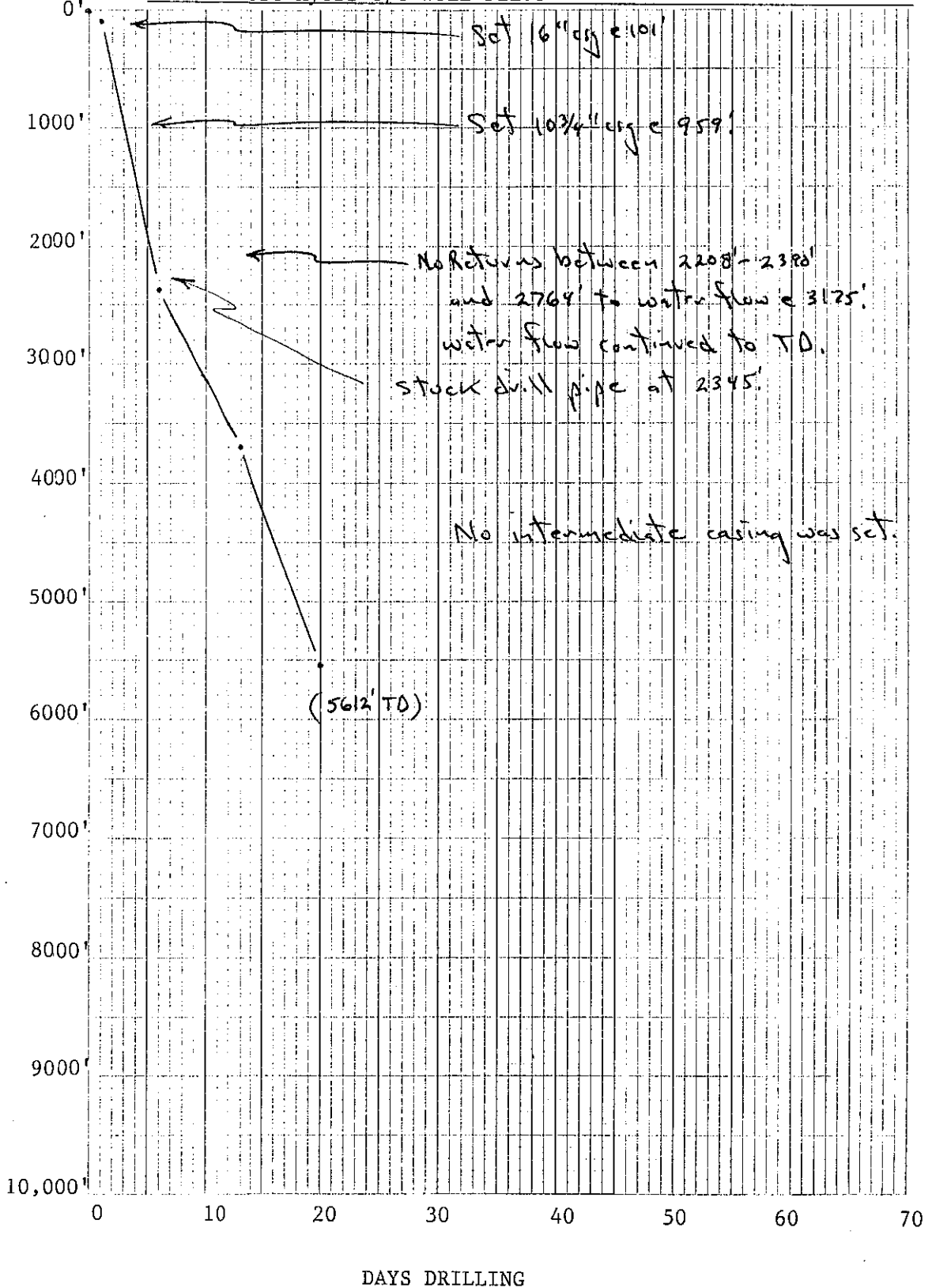
County Lee

Sec. 13 T 45S R 24E TD 5612'

Well or Owner's Name Sunnyland Contracting #1 Walton

Data Source North Fort Myers O/G Well Files

DEPTH BELOW D. F.



208 Sunniland Construction Company
 #1 Thomas E. Walton
 Sec. 13, T45S R24E, Lee County
 320' W & 80' N of the Center of NW NW
 GL 11', DF 21' - TD 5,612'
 Spud 8/21/54 - P & A 9/9/54

Permit # 20833999

SCHLUMBERGER WELL SURVEYING CORPORATION
 HOUSTON, TEXAS



Electrical Log

COUNTY LEE FIELD or LOCATION WILDCAT WELL T. E. WALTON #1 COMPANY SUNNILAND CONSTRUCTION COMPANY	COMPANY	SUNNILAND CONTR.	Location of Well 200' W & 80' N OF CENTER NW NW (ST) Elevation: D.F. 21' K.B. or G.L.
	WELL	T. E. WALTON #1	
	FIELD	WILDCAT	
	LOCATION	SEC-13-45S-24E	
	COUNTY	LEE	
	STATE	FLORIDA	
FILING No.			

Brief Geologic Log by C. V. Cook and R. S. Caughey 8/94

RUN No.	ONE				
Date	9-9-54				
First Reading	5:00				
Last Reading	5:30				
Feet Measured	4025				
Csg. Schlum.	1X0				
Csg. Driller	DEW				
Depth Reached	5580				
Bottom Driller	5612				
Depth Datum	ONE FOOT ABOVE ROTARY OR 10' ABOVE BRADENHEAD				
Mud Mat.	SALT WATER (NO RETURNS)				
Density					
Viscosity					
Resist.	0.18 @ 78 °F	@ °F	@ °F	@ °F	@ °F
Res. BHT	.11 @ 125 °F	@ °F	@ °F	@ °F	@ °F
pH	@ °F	@ °F	@ °F	@ °F	@ °F
Wir. Loss	CC 30 min.	CC 30 min.	CC 30 min.	CC 30 min.	CC 30 min.
Max. Temp. °F	125				
Bit Size	8 5/8"				
Specs.—AM	16"				
AM	64"				
AO	18 3/8"				
Opr. Rig Time	1 1/2 hrs.				
Truck No.	1761-1-1000				
Recorded By	CHURCH				
Witness By	MCLAVIN-TREADWAY-PLOCK				

30- 60 - Mollusk frags, Qz sand, 30% v p o
 lt gray calc Ss w/1% phos, & 3% phos grns

60-120 - Ss, mollusk frags, Qz sand & 1-10%
 phos grs and grns

120-180 - Ss w/5-15% phos, mollusk frags, Qz
 sand, encrusting bryozoæ 10% phos at 150-180'

180-300 - V p o calc Ss-sandy Ls w/5-10% phos,
 some Qz sand, minor-30% phos grns, encrusting
 bryozoa (?) ; and rare yel/gray Dol

300-390 - Ls w/1-20% phos, Qz sand, 3-30%
 phos, & yel/gray Dol at 360'

390-420 - V p o Ls w/5-10% phos, 5% lt gray
 Dol & 10% phos

420-600 - V lt gray sandy Dol, 50-70% v p o,
 sandy Ls & 1-5% phos grs-pebbles

600-930 - V p o, sandy Ls, Dol as above, gray
 micrite, rare-5% phos, dolomitic Ls and lt
 gray xln Dol at 840'

930-960 - Sandy Ls, lt gray Dol, calc Ss,
 Dolosilt, rexal v p o Ls & 5% phos

960-1020 - V p o, sandy, granular Ls w/
 mollusk frags, Ss, Dol, Qz sand & 3% phos
 pebbles

REMARKS: *Log to 2208-2390' of
 well. Flow = 3125' of*

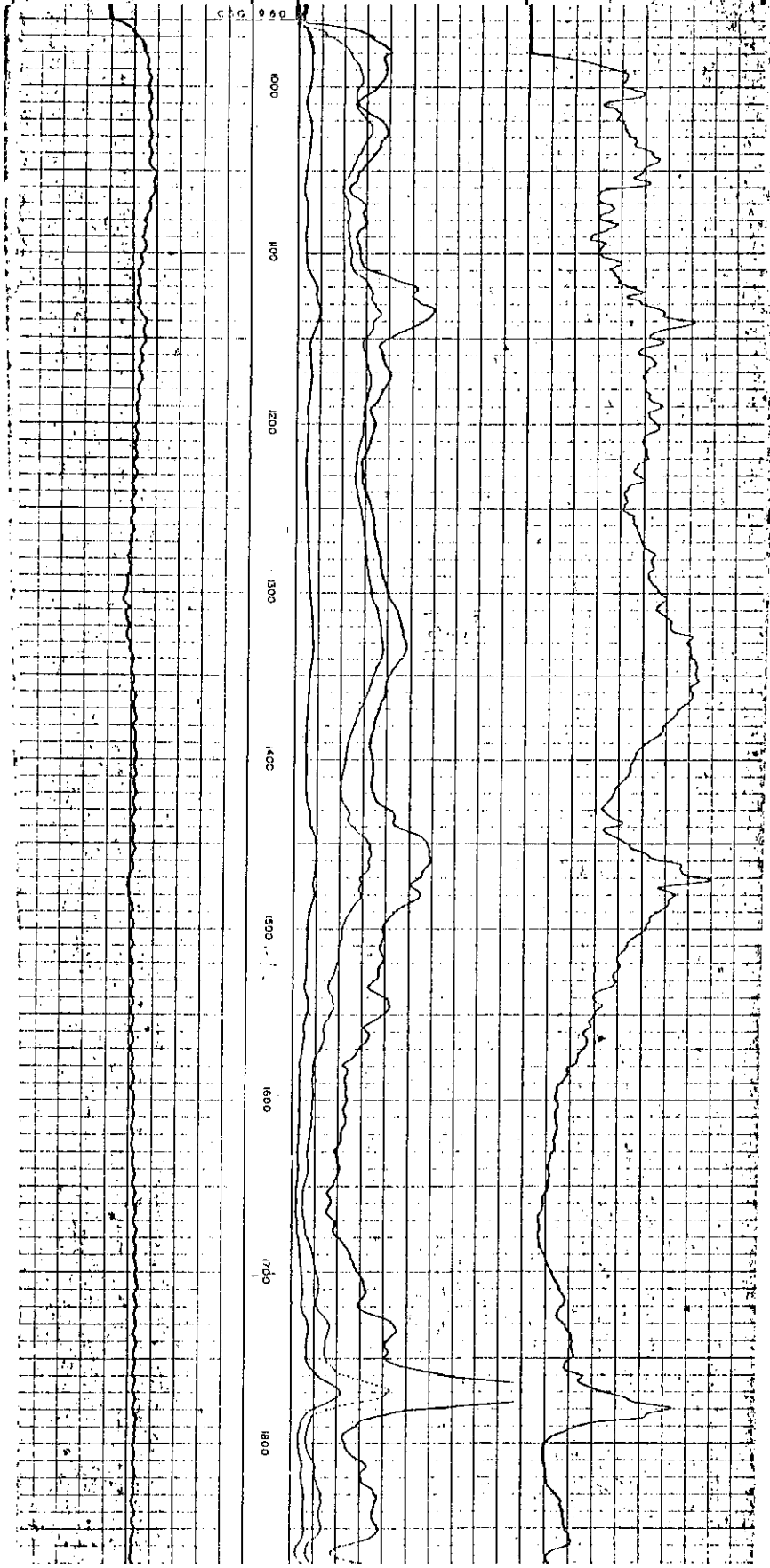
A RILEY REPRODUCTION

Reg. No. 579892

SPONTANEOUS-POTENTIAL millivolts SP 15 NW	SHLTD	RESISTIVITY -ohms. m ² /m	RESISTIVITY -ohms. m ² /m
		NORMAL CURVES	LATERAL CURVES
		0 AM - 16" 50	0 AO - 18 3/8" 50
		0 AMP NORMAL 10	
		0 AM - 64" 50	
		0 HIGH SCALE 500	0 HIGH SCALE 500
		0-EXTRA HIGH SCALE 5000	XXXXXXXXXXXXXXXXXXXXXXXXXXXX

#208
Ft Myers SE Quad

NORMAL CURVES		LATERAL CURVES	
0	AM - 16°	0	AO - 18.8°
0	AMP NORMAL	10	
0	AM - 64°	50	
0	HIGH SCALE	500	0 HIGH SCALE 500
		0-EXTRA HIGH SCALE 5000	
		XXXXXXXXXXXXXXXXXXXXXXXXXXXX	



1020-1260 - V p o, pelletal, f g, fos Ls;
some part rexal & 15-25% lt gray chalky
calc clay or Ls w/minor bl carb
material (?)

1260-1320 - As above w/40% lt gray Ls

1320-1350 - V p o, f g, fos Ls w/common
Camerina, 10% lt gray Ls as above & 3%
colorless, v crse subang Qz sand

1350-1440 - As above w/<1% Qz sand

1440-1500 - As above w/5% lt gray Ls

1500-1530 - As above w/5% gray/orange, f g
xln Dol

1530-1770 - As above w/10-20% gray/orange,
f-med xln Dol; common-numerous Camerina

1770-1860 - Ls as above, 10-20% Dol as above,
a few Dictyoconus; common Camerina

Ft Myers SE Quad

1860-1890 - Ls as above, 5% Dol as above, rare Dictyoconus and some Camerina

1890-1950 - Ls as above, minor Dol as above, no cones and a few Camerina

1950-2100 - Ls as above, minor-10% Dol as above, few- no cones and some forams

2100-2130 - Ls as above, 10% lt brn-mod brn, crse xln Dol and a few cones

2130-2160 - Ls as above, 25% gray/orange, med xln Dol

2160-2190 - 60% Dol, lt brn, clear, black, gray, v p o, most crse xln & as aggregates of Dol rhombs; 40% wh chalky Ls, some w//Dol stringers & rhombs in matrix

2190-2420 - Samples missing

2420-2480 - 70% wh, chalky Ls, some v p o Ls, 30% Dol, v p o, lt brn, dk brn, grays-dk gray, mostly crse xln (aggregates of rhombs common), 1% bl & v carb matter

2480-2510 - Ls & Dol as above w/3% v carb (lignitic?) matter

2510-2540 - Ls & Dol as above (Dol now 20%) & 1-2% v carb matter

2540-2570 - Ls as above; 5% Dol as above & 3% v carb matter

2570-2600 - Sample missing

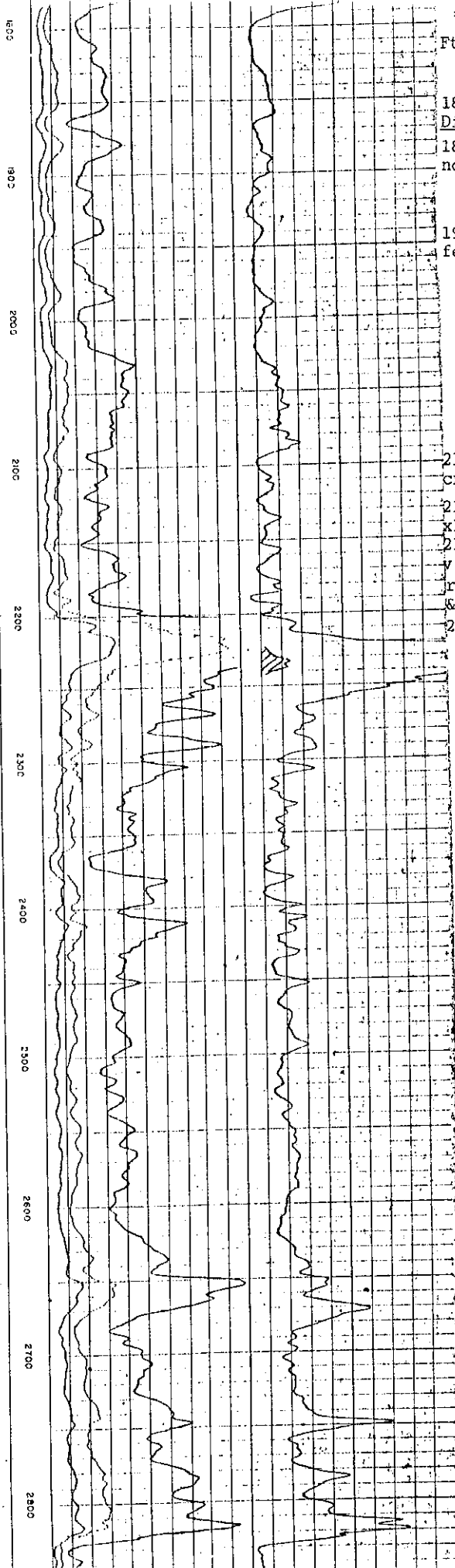
2600-2690 - Largely v p o, chalky Ls, 5% Dol as above & 2% v carb matter

2690-2720 - 60% Ls as above, 50% gray/orange- lt brn, crse xln Dol & 1-2% bl v carb matter

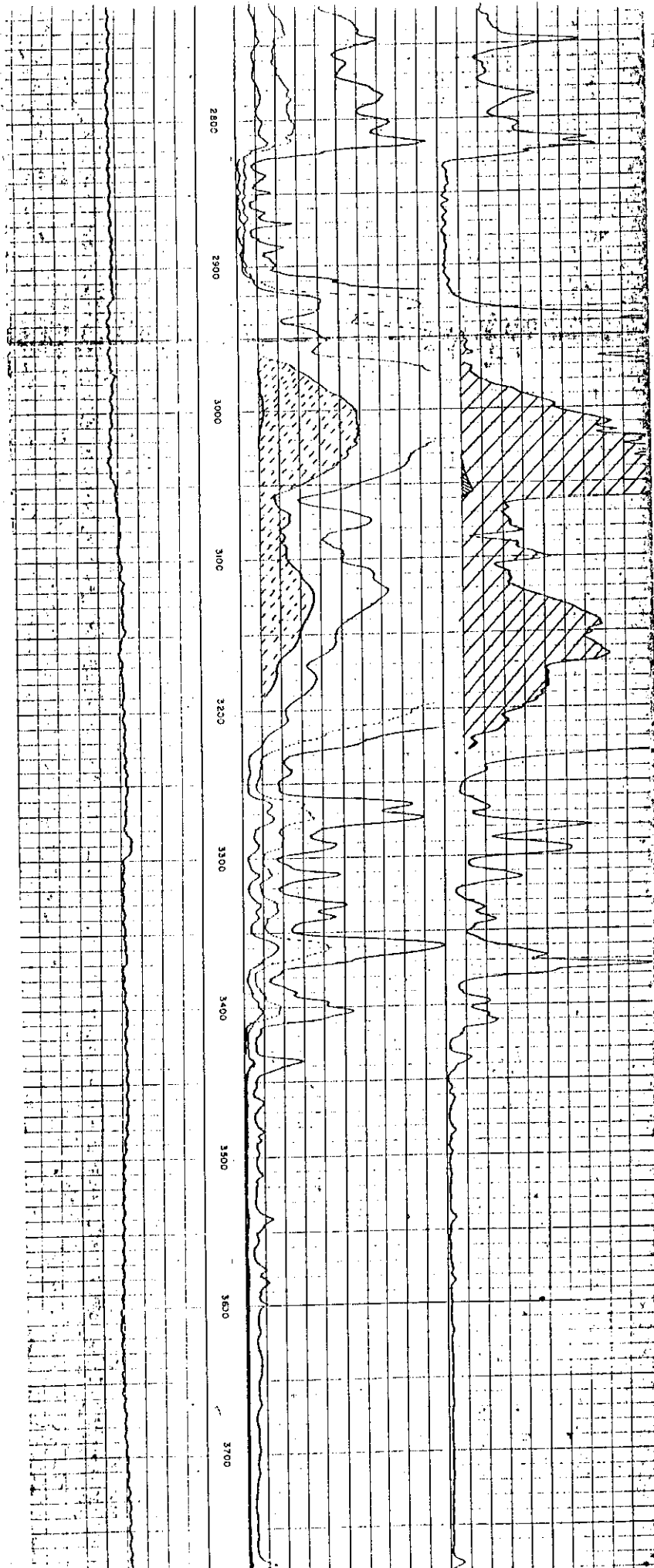
2720-2750 - 75% Ls as above, 20% Dol as above, 5% bl, v carb matter in a clayey Sltst

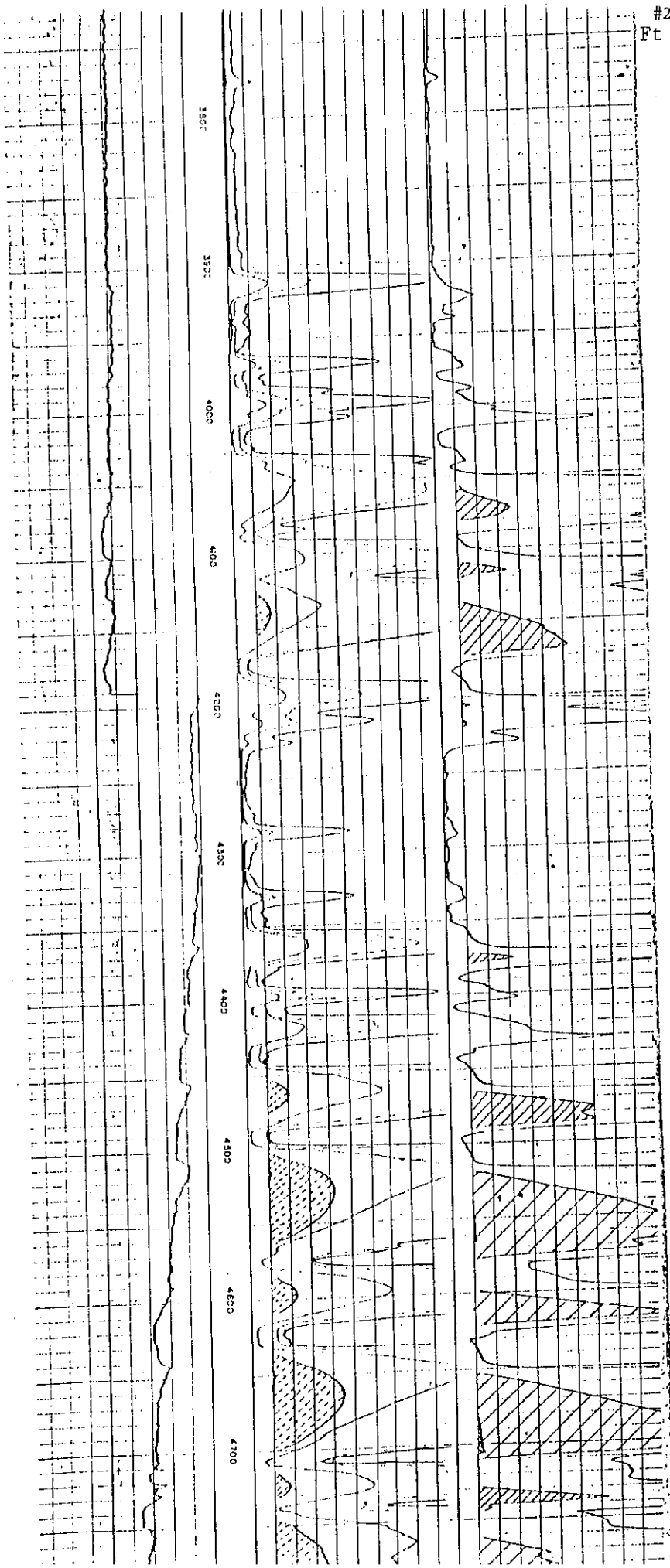
2750-2780 - 85% Ls as above, 15% Dol as above, and 2% v carb Sltst as above.

SUNNLAND CONTR. CO., T.E. WALTON #1, ELEV. D.F. 10'



#208
Ft Myers SE Quad





#208

Sunniland Construction Company #1 Thomas E. Walton
320' W & 80' N of the Center of NWNW
Sec. 13, T45S R24E, Lee County, Ft. Myers SE Quad
GL 11', DF 21', TD 5,612', Spud 8/21/54, P & A 9/9/54

Brief Log by C. V. Cook and R. S. Caughey 8/94

- 30- 60 Pelecypod shells and frags, colorless subang fine Qz sand, 30% v pale orange to lt gray fg calc Ss w/1% bl phos grs, and 3% bl and brn phos grns .
- 60- 90 Ss as above, mollusk frags, 20% loose Qz sand as above w/1% bl phos grs and 1% bl and brn phos grns .
- 90-120 As above w/5-10% bl and brn phos grs and grns .
- 120-150 Ss as above w/15% bl and brn phos grs, 20% bl and brn phos grns, mollusk frags and 20% loose Qz sand as above .
- 150-180 Ss as above w/5-15% bl and brn grs, mollusk frags, encrusting bryozoa(?) & 10% bl phos grns .
- 180-240 30% bl phos grns, 30% v pale orange calc Ss w/10% bl phos grs, 40% v pale orange fg sandy recrystallized fos Ls w/1% bl phos grs, encrusting bryozoa and mollusk shell frags .
- 240-270 80% v pale orange fg sandy Ls w/5-10% bl and brn phos grs, 20% loose colorless fine subang Qz sand w/10% bl and brn grs and 3% bl and brn phos grns .
- 270-300 As above w/comencrusting bryozoa and trace yellowish gray sucrosic Dol .
- 300-330 Ls as above w/20% bl and brn phos grs; 25% loose fg subang Qz sand, and 3% bl phos grns .
- 330-360 Chalky Ls as above w/1-3% bl and brn grs, 30% loose bl and brn phos grs, 10% colorless Qz grs, echinoid frag and bryozoa .
- 360-390 As above w/5% yel/gray sucrosic Dol, no echinoid frags or bryozoa; mollusk frags .
- 390-420 V pale orange chalky f g sandy Ls w/5-10% bl and brn phos grs, 5% lt gray sucrosic Dol, 10% bl phos pebbles .
- 420-450 V lt gray sandy (fg, subang) Dol w/1% bl phos grs; 50% v pale orange part recrystallized slightly sandy fg fos Ls w/1-3 % bl phos grs .
- 450-510 As above w/60% Ls and 40% Dol; 1% bl phos pebbles .
- 510-540 As above w/5% bl phos pebbles .
- 540-600 As above; 70% Ls & 30% Dol .
- 600-630 V pale orange sandy fg fos Ls w/1-3% bl and brn grs, encrusting(?) bryozoa, 40% Dol as above, 5% v lt gray micrite and 5% bl phos pebbles .

#208

Sunniland Construction Company #1 Thomas E. Walton
Sec. 13, T45S R24E, Lee County, Ft Myers SE Quad

- 630- 690 As above.
- 690- 720 As above w/70% Ls, 30% Dol and a tr of bl phos pebble
- 720- 840 Ls as above w/1-3% bl phos grs, 20% v pale orange fg part dolomitized Ls, and 5% lt gray fg xln Dol.
- 840- 930 As above w/60% dol Ls, 35% sandy Ls and 5% Dol.
- 930- 960 45% sandy Ls as above, 20% lt gray fg Dol; 5% v lt gray fg subang calc Ss, 10% pale olive fg sandy Dolosilt w/3% bl phos grs, 15% v pale orange part recrystallized fos Ls, and 5% bl phos pebbles.
- 960-1020 V pale orange sandy fg pelletal fos Ls w/mollusk frags. 5% Ss as above, 5% lt gray fg Dol, 10% colorless subang fg Qz sand (loose) and 3% bl phos pebbles.
- 1020-1260 V pale orange pelletal (some part recrystallized) fg fos Ls and 15-25% lt gray chalky calc clay or Ls w/minor bl carbonaceous material (?).
- 1260-1320 As above w/40% lt gray Ls.
- 1320-1350 V pale orange fg fos Ls w/common Camerina, 10% lt gray Ls as above and 3% colorless v coarse subang Qz sand.
- 1350-1440 As above w/1% Qz sand.
- 1440-1500 As above w/5% lt gray Ls.
- 1500-1530 As above w/5% grayish orange fg xln Dol.
- 1530-1770 As above w/10-20% grayish orange, f to med xalline Dol; common to numerous Camerina.
- 1770-1860 Ls as above, 10-20% Dol as above, a few Dictyoconus; common Camerina.
- 1860-1890 Ls as above, 5% Dol as above; rare Dictyoconus; some Camerina.
- 1890-1950 Ls as above, minor Dol as above; no cones; a few Camerina.
- 1950-2100 Ls as above, minor-10% Dol as above; few to no cones; some forams.
- 2100-2130 Ls as above, 10% lt brn to mod brn, coarsely xalline dolomite; a few cones.
- 2130-2160 Ls as above, 25% grayish orange, med xalline dolomite.
- 2160-2190 60% Dol, lt brown, clear, black, gray, v pale orange, most coarsely xalline and as aggregates of Dol rhombs; 40% white chalky Ls, some w/Dol stringers and rhombs in matrix.
- 2420-2480 70% white, chalky Ls, some v pale orange Ls; 30% Dol, v pale orange, lt brown, dk brown and grays to dk gray, mostly coarsely xalline (aggregates of rhombs common); ±1% black, and v carbonaceous matter.
- 2480-2510 Ls and Dol as above w/3% v carbonaceous (lignitic?) matter.

#208

Sunniland Construction Company #1 Thomas E. Walton
Sec. 13, T45S R24E, Lee County, Ft Myers SE Quad

- 2510-2540 Ls and Dol as above (Dol now $\pm 20\%$) and 1-2% v carbonaceous matter.
- 2540-2570 Ls as above, 5% Dol as above and 3% v carbonaceous matter.
- 2570-2600 Sample missing
- 2600-2690 Largely v pale orange, chalky Ls, 5% Dol as above, and $\pm 2\%$ v carbonaceous matter.
- 2690-2720 60%Ls as above; 40% grayish orange, some lt brown, coarsely xalline dolomite; 1-2% bl v carbonaceous matter.
- 2720-2750 75% Ls as above; 20% Dol as above; 5% bl, v carbonaceous matter in a clayey Sltst.
- 2750-2780 85% Ls as above; 15% Dol as above; 2% v carbonaceous Sltst as above.

(Samples missing between 2190' to 2420')