

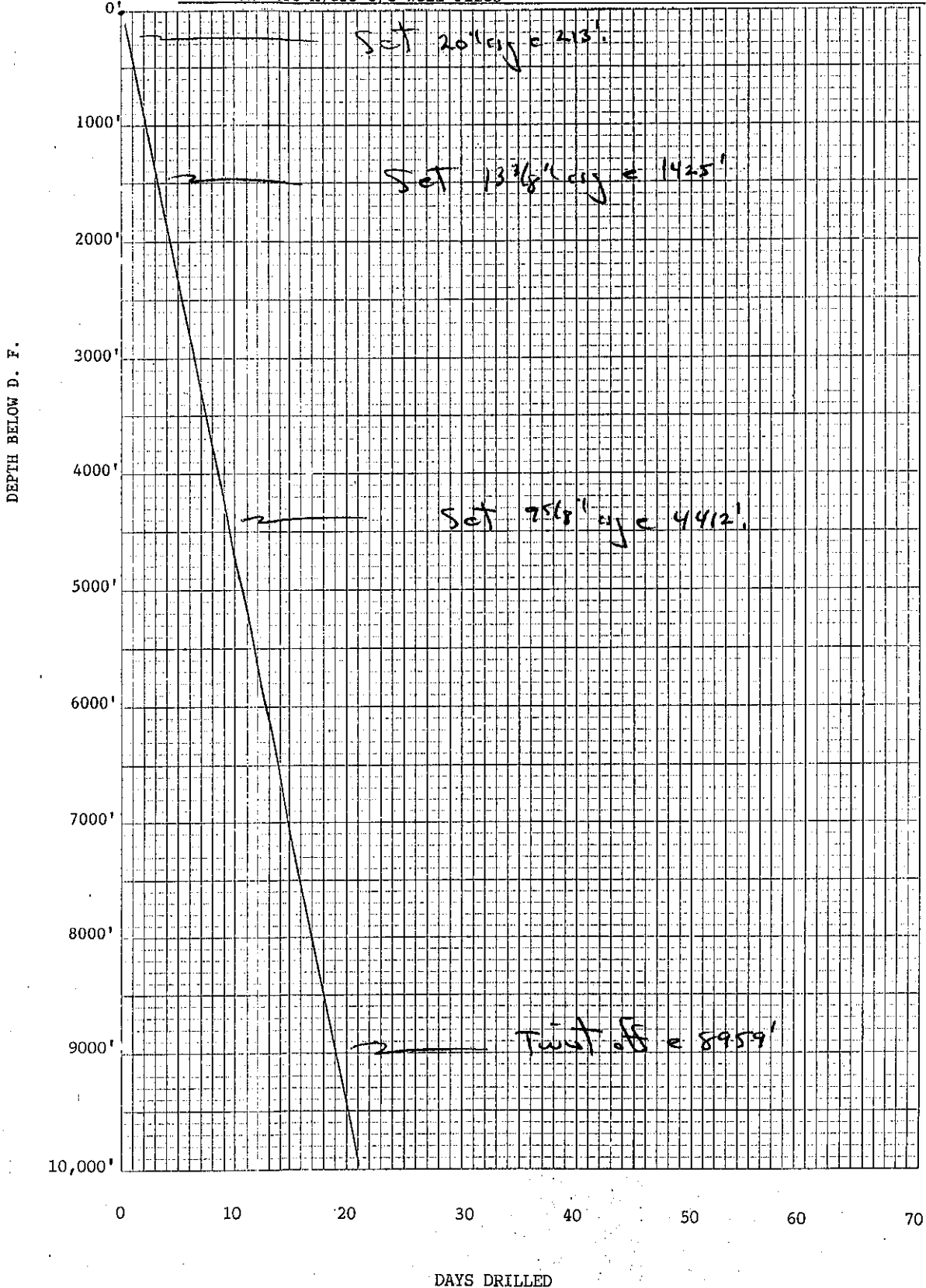
Well No. 317 [W-7103] Elevation G.L. 18' D.F. 34.5' K.B. 35.5'

Location 1980'FWL, 1620' FSL County Collier

1 1 1 Sec. 20 T 48S R 30E TD 11,654'

Well or Owner's Name H.O.R.C. #22 GCR (Sunniland Field)

Data Source North Fort Myers O/G Well Files



317
Schlumberger

X-Y CALIPER LOG

CSU Field Log

COMPANY: EXXON COMPANY USA

WELL: GCRC 22

FIELD: SUNNILAND
COUNTY: COLLIER
STATE: FLORIDA

LOCATION: TAPS

SEC: RGT:

PERMANENT DATUM: GL
ELEV. OF PERM. DATUM: HYDRIL
LOG MEASURED FROM: PERM. DATUM
DRLG. MEASURED FROM: HYDRIL

ELEVATIONS-
KE: 35.5'
DF: 34.5'
GL: 18'

DATE: 19 DEC 86
RUN NO: 1

DEPTH-DRILLER: 1900.0 F
DEPTH-LOGGER: 1900.0 F
BTM. LOG INTERVAL: 1900.0 F
TOP LOG INTERVAL: 1400.0 F

CASING-DRILLER: 13.375
CASING-LOGGER: 13.375
CASING: 12.25

BIT SIZE: 12.25

OTHER SERVICES-
NONE

PROGRAM
TAPE NO:
26.2

TYPE FLUID IN HOLE: WATER

DENSITY:
VISCOSITY:
PH:

FLUID LOSS:

SOURCE OF SAMPLE:

RMF: AT

RMC: AT

SOURCE RMF/RMC: AT

RM AT BHT: AT

RMF AT BHT: AT

RMC AT BHT: AT

TIME CIRC. STOPPED:
TIME LOGGER ON BTH.: 0900

MAX. REC. TEMP:

LOGGING UNIT NO: 8193
LOGGING UNIT LOC: FT MYERS
RECORDED BY: BUCHEL
WITNESSED BY: BISCHEL

REMARKS:

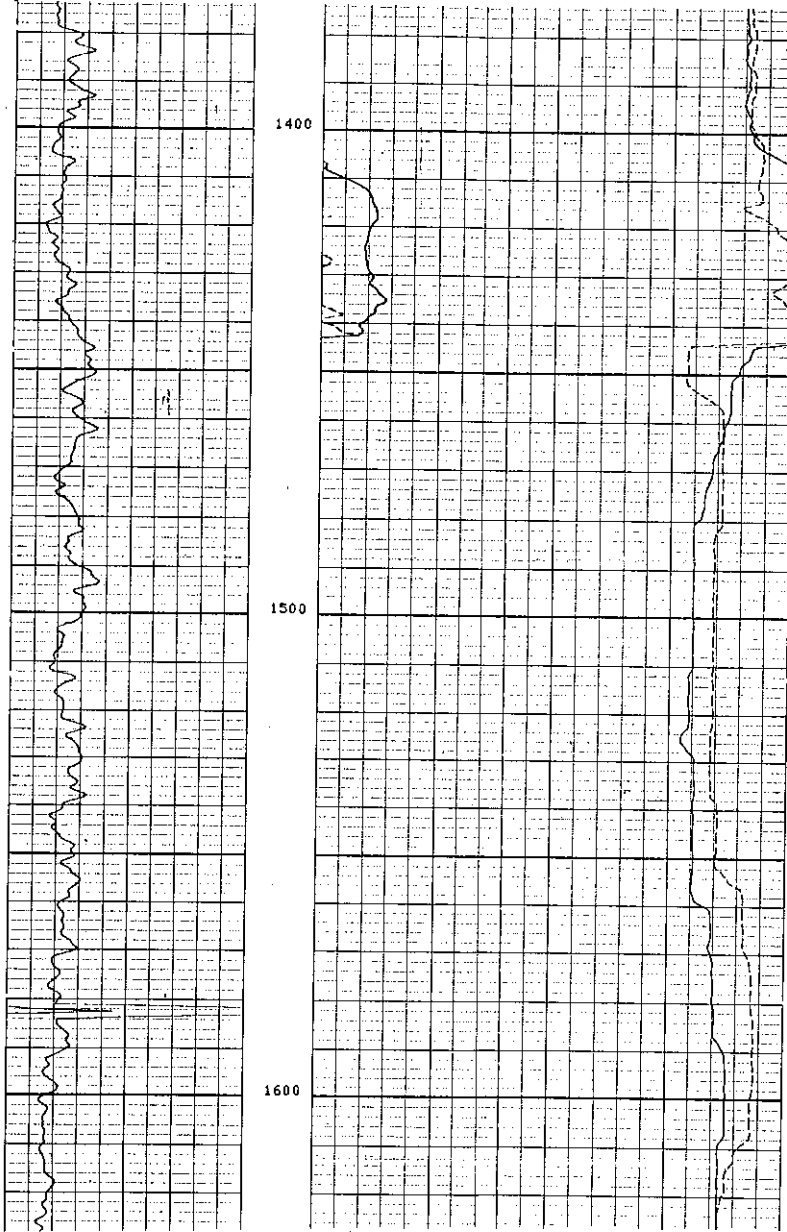
EQUIPMENT NUMBERS-

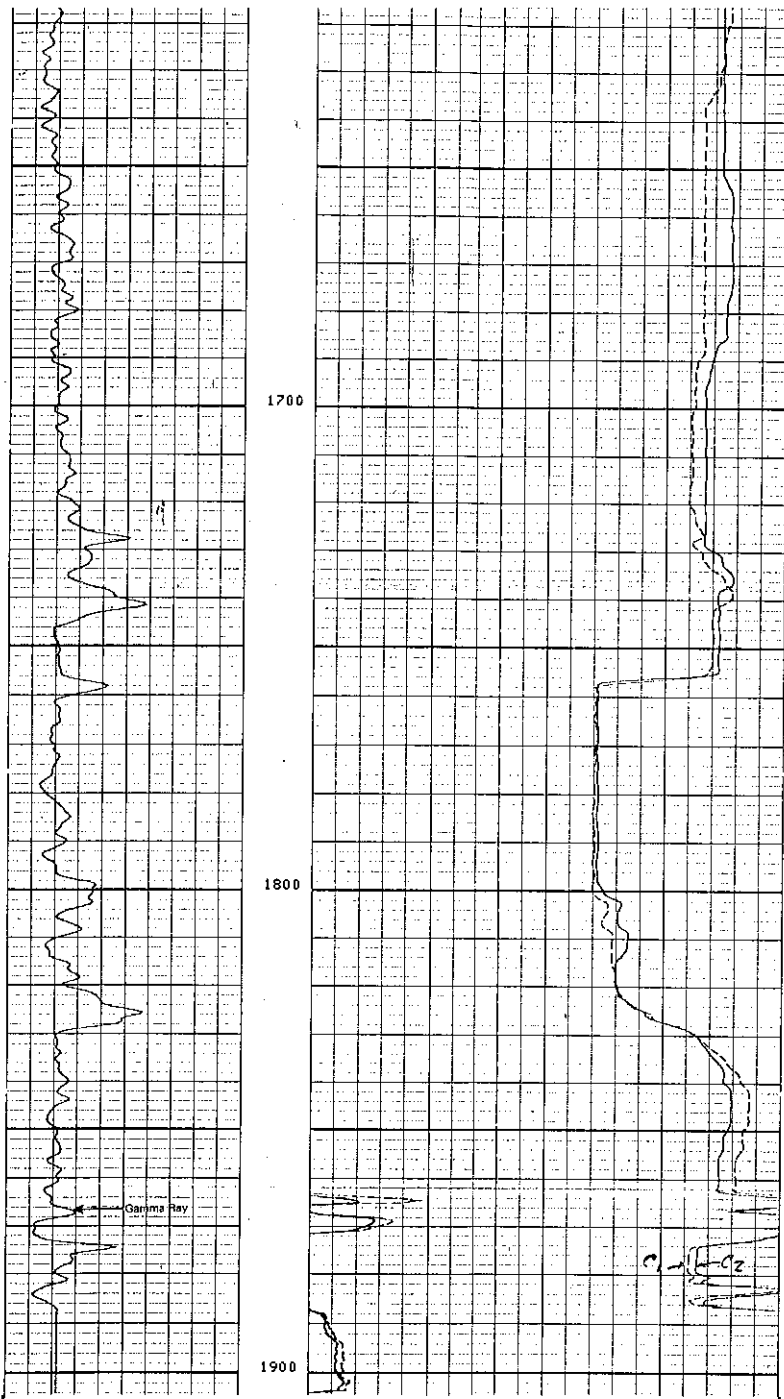
BT

ALL INTERPRETATIONS ARE OPINIONS BASED ON INFERENCES FROM ELECTRICAL OR OTHER MEASUREMENTS AND WE CANNOT, AND DO NOT GUARANTEE THE ACCURACY OR CORRECTNESS OF ANY INTERPRETATIONS, AND WE SHALL NOT, EXCEPT IN THE CASE OF GROSS OR WILLFUL NEGLIGENCE ON OUR PART, BE LIABLE OR RESPONSIBLE FOR ANY LOSS, COSTS, DAMAGES OR EXPENSES INCURRED OR SUSTAINED BY ANYONE RESULTING FROM ANY INTERPRETATION MADE BY ANY OF OUR OFFICERS, AGENTS OR EMPLOYEES. THESE INTERPRETATIONS ARE ALSO SUBJECT TO OUR GENERAL TERMS AND CONDITIONS AS SET OUT IN OUR CURRENT PRICE SCHEDULE.

HOLE VOLUME = 848.835 F3
FROM 1903.5 TO 1373.0 FEET

		BS (IN)	20.000
		C2 (IN)	20.000
GR (GAP1)	100.00	C1 (IN)	20.000
0.0			





FILE 2 18-DEC-86 08:33

GR (GAPI) 0.0 100.00	BS (IN)	20.000
	C2 (IN)	20.000
	C1 (IN)	20.000
	0.0	20.000