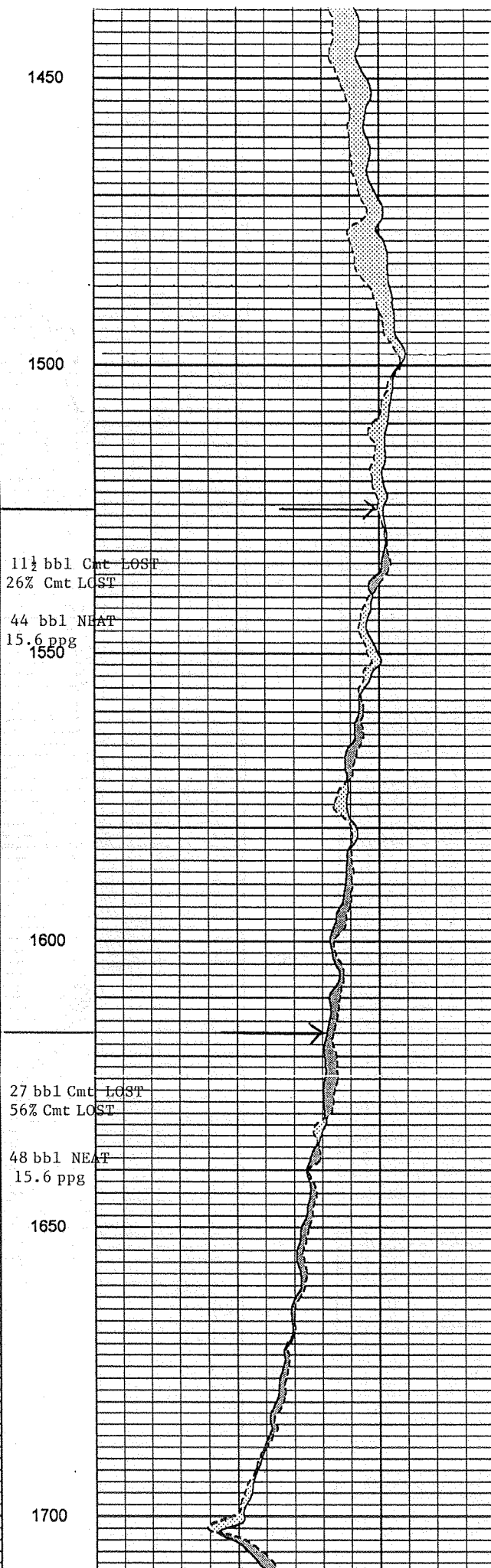
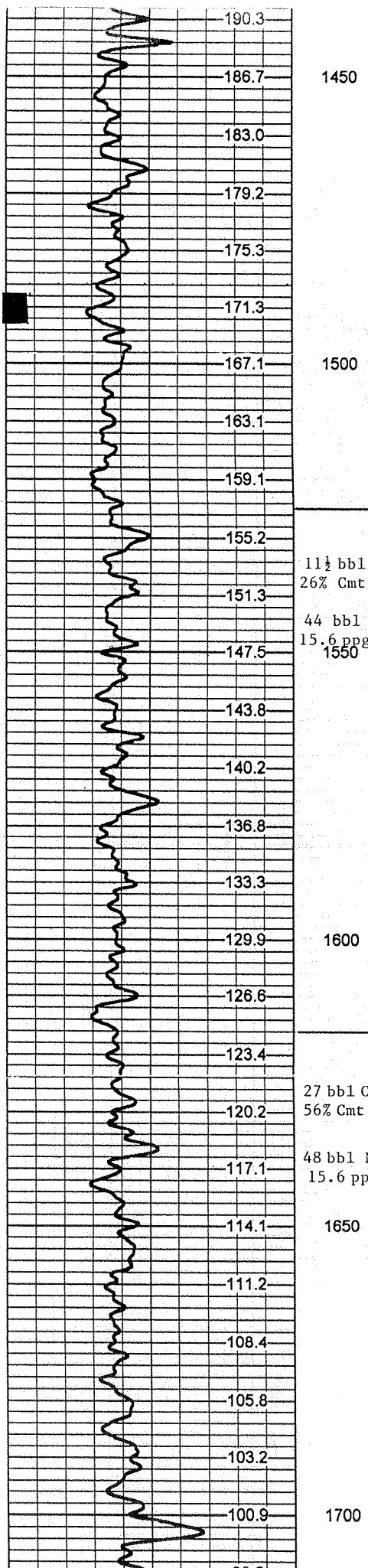
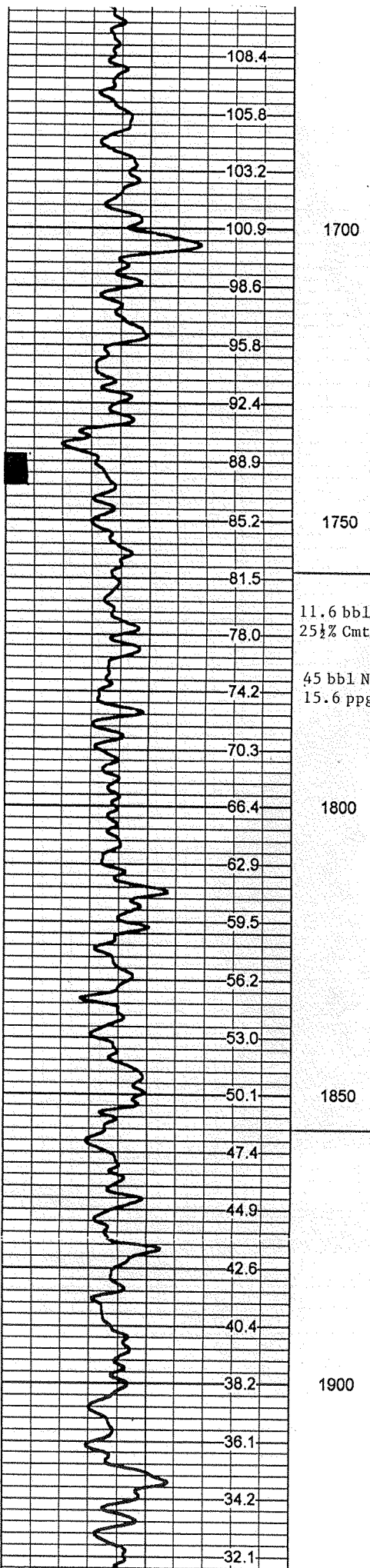


Permit #423, Calumet Florida, Inc.  
 30-3 Lee Cypress "A" sec 30,  
 1305' FSI, 1320' FML  
 T45S R28E, West Felda Field  
 Hendry County GL: 31.8'  
 Spud: 07/25/1970  
 P&A'd: 02/15/2001



Permit #423, CalumetFlorida, Inc  
30-3 Lee Cypress "A"  
1305' FSL, 1320' FWL sec 30,  
T45S R28E, West Felda Field  
Hendry County GL: 31.8'  
Spud: 07/25/1970  
P&A'd: 02/15/2001



1700

1750

1800

1850

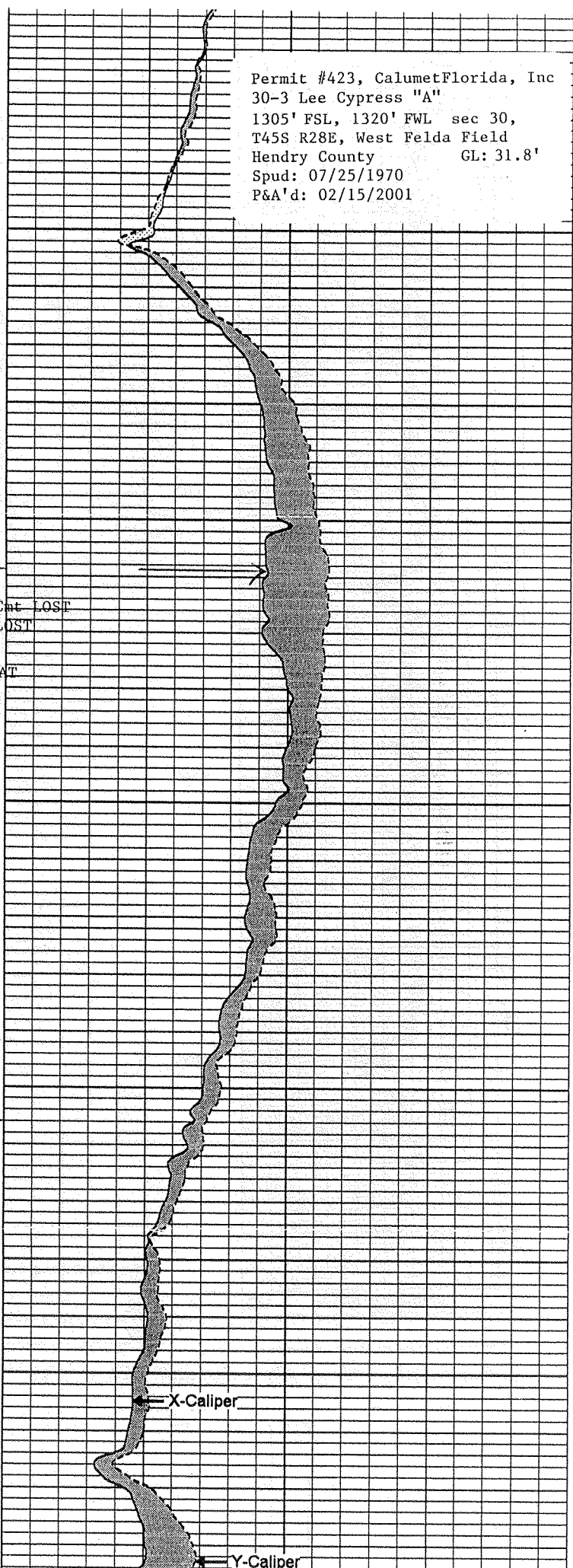
1900

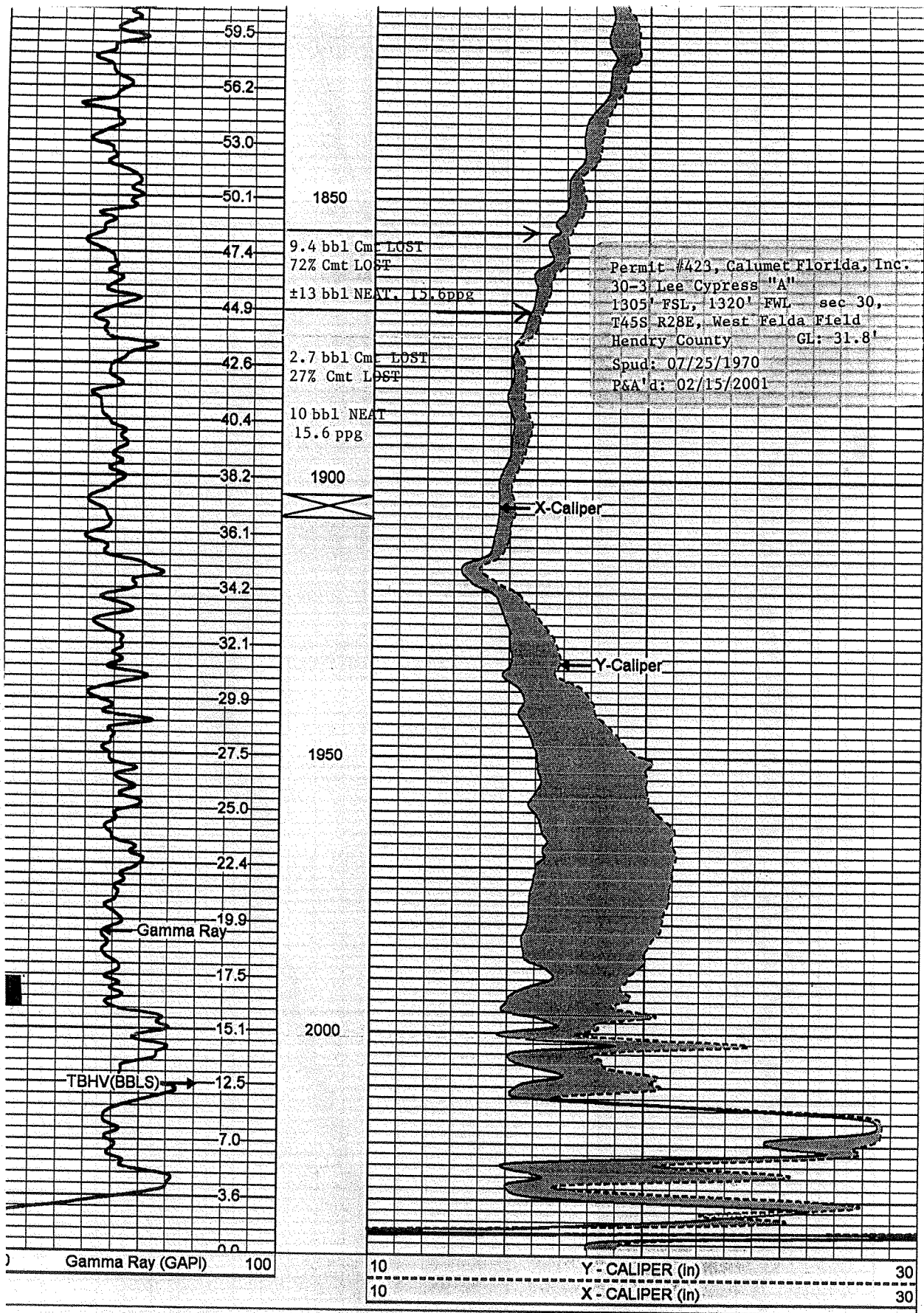
11.6 bbl Cmt LOST  
25 1/2% Cmt LOST

45 bbl NEAT  
15.6 ppg

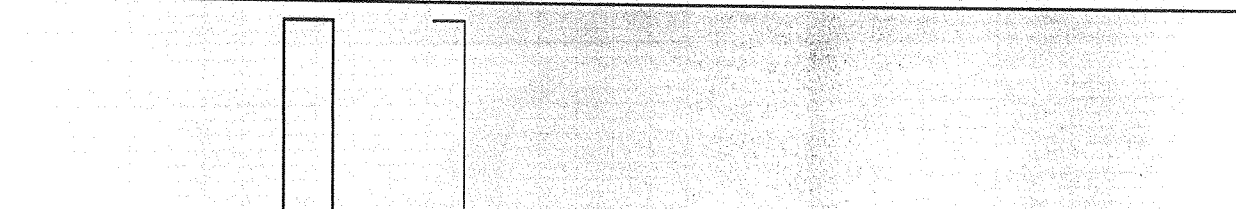
X-Caliper

Y-Caliper





CEMENT PUMPED, TYPE OF CMT & CMT LOST (BBL & %) TO THE FORMATION



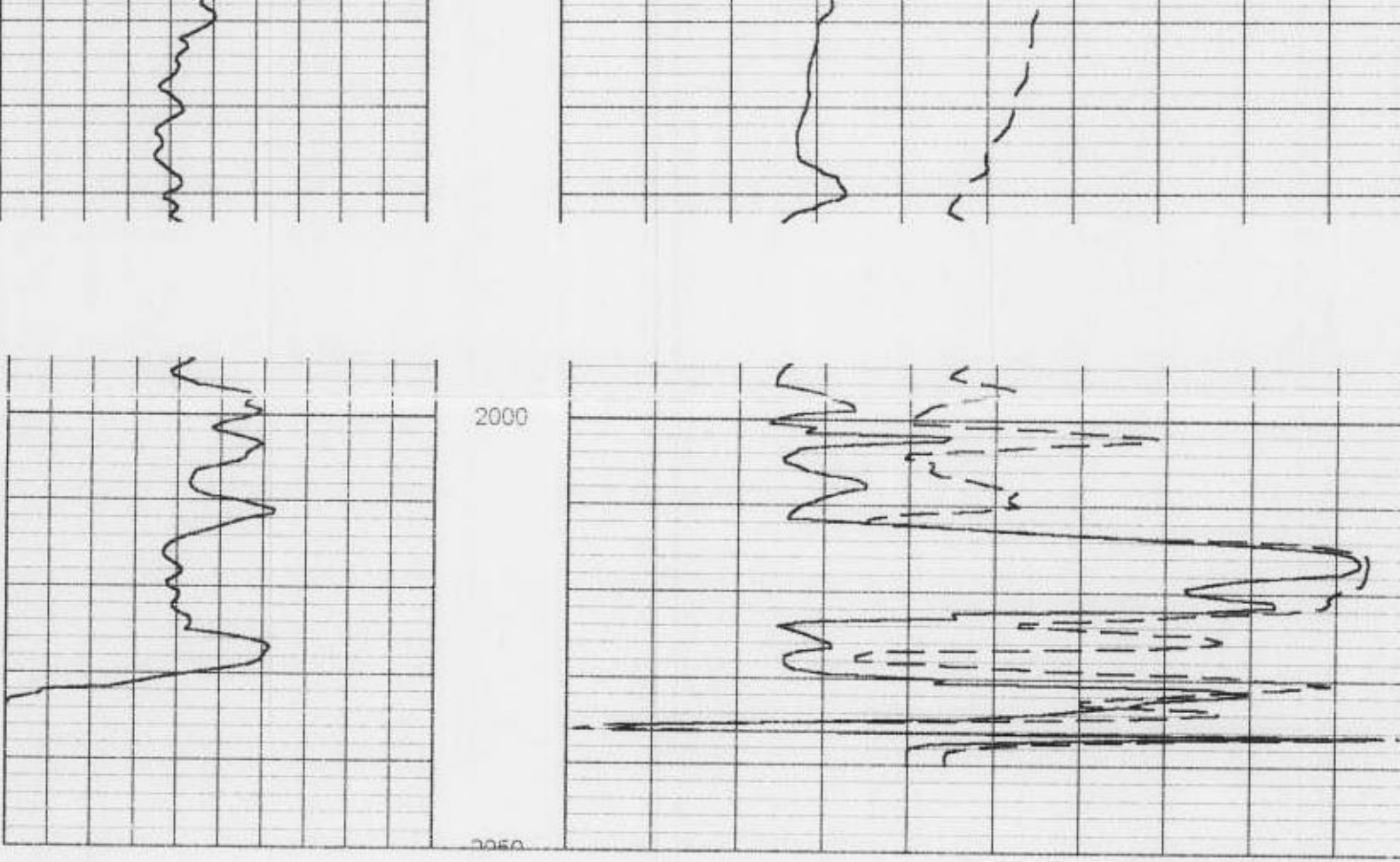
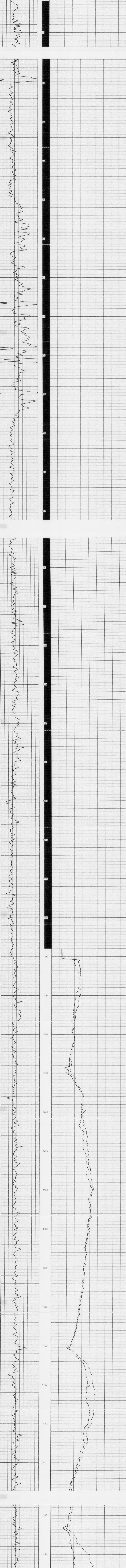


Digital Formation, Inc.  
Denver, CO (USA)

NA

Version 3.5.002  
Copyright © 1992-99 Digital Formation, Inc. All Rights Reserved.  
File Name: D:\m3\p1\m3.apd  
Well Name: LEE CYPRESS 'A' 30.3  
Date: Friday, June 15, 2001, at 08:44:58 AM  
Plot:  
Plot created from: m3.apd

GR 100 200  
UAPI 100 200  
FT 240 FT  
M Unit  
Scale 1000  
Y-CAL IN  
X-CAL IN



<b>FLORIDA</b> <small>GEOSYSTEMS, LLC</small>		<b>Company</b> CALUMET FLORIDA, INC. <b>Well</b> LEE CYPRESS "A" 30-3 <b>Field</b> WEST FELDA <b>County</b> HENDRY <b>State</b> FLORIDA	
<b>Company</b> CALUMET FLORIDA, INC. (H O R C) <b>Well</b> LEE CYPRESS "A" 30-3 <b>Field</b> WEST FELDA <b>County</b> HENDRY <b>State</b> FLORIDA		<b>Location</b> 1305 FSJ & 1320 FWL SEC 30 S6S 2NE	
<b>Investment Class</b> GROUND LEVEL <b>Operator</b> GROUNTRON <b>Contractor</b> KELLY BUSHMAN		<b>Estimate</b> 3117 <b>KPI</b> <b>Estimate</b>	
<b>Well Number</b> 11752 <b>Well Name</b> 20007 <b>Well Type</b> UG <b>Well Status</b> UG <b>Well Construction</b> UG		<b>Well Depth</b> 1150 <b>Well Diameter</b> 3.50 <b>Well Completion</b> UG	
<b>Well Log</b> UG <b>Well Log</b> UG <b>Well Log</b> UG <b>Well Log</b> UG		<b>Well Log</b> UG <b>Well Log</b> UG <b>Well Log</b> UG <b>Well Log</b> UG	

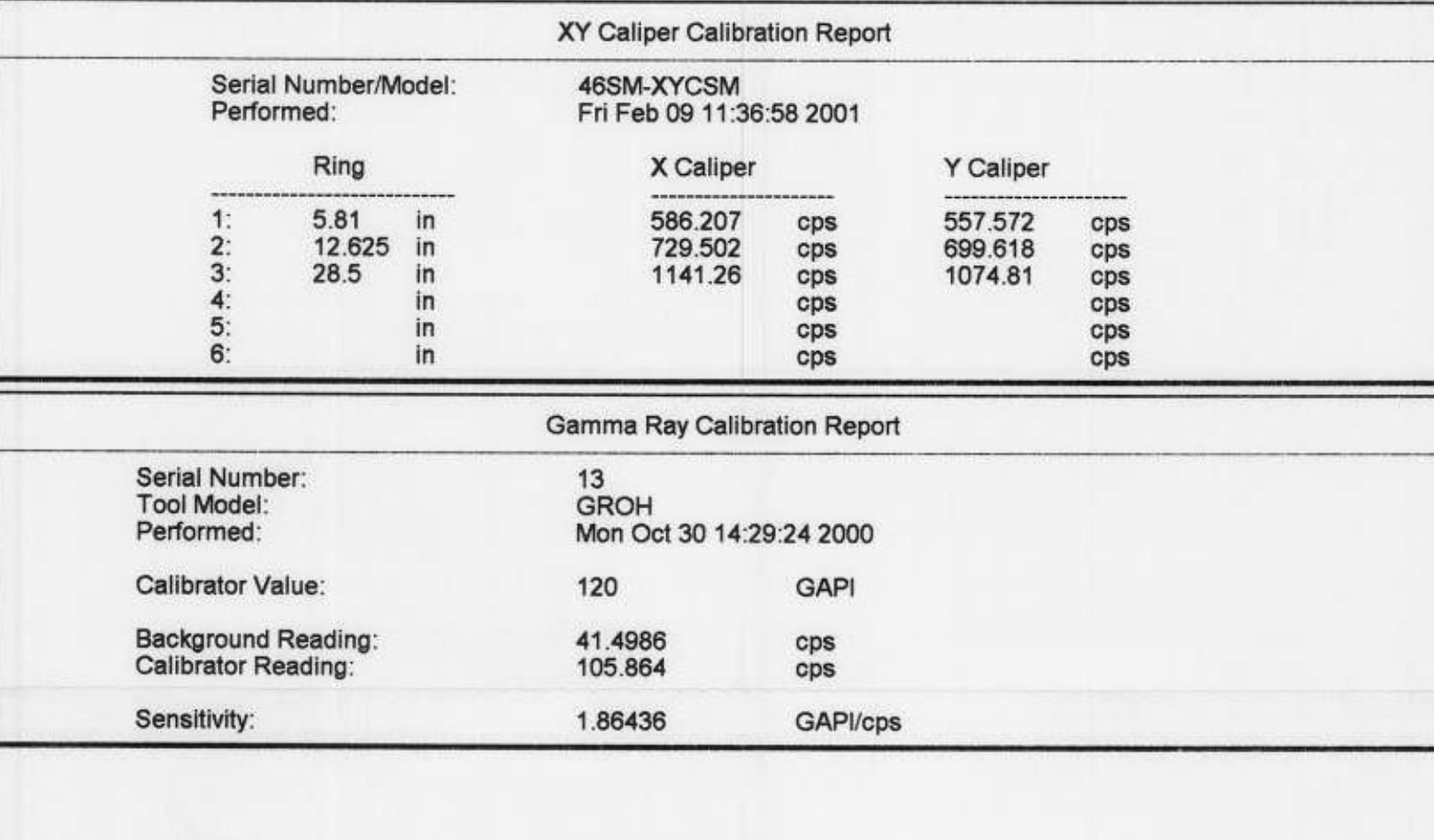
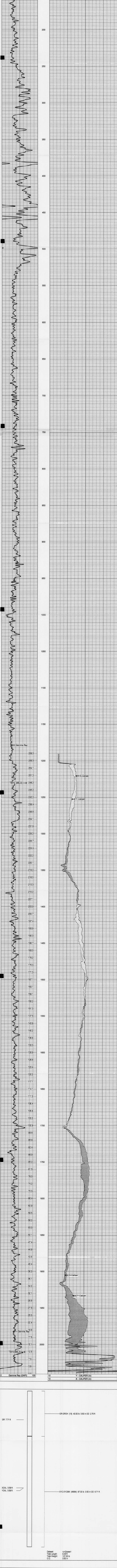
Comments

TBHV CALCULATED IN BARRELS

DEP PERMIT #423

**FLORIDA** **MAIN PASS**

Database File: i30-3.db  
 Dataset Pathname: run0merge  
 Presentation Format: gxyz.cps  
 Dataset Creation: Fri Feb 09 13:05:05 2001  
 Charted by: Depth in Feet scaled 1:240



Serial Number/Model:	465M-XYCSM	
Performed:	Fri Feb 09 11:36:58 2001	
	X Caliper	Y Caliper
1:	5.61 in	557.572 cps
2:	12.625 in	729.502 cps
3:	28.5 in	1141.26 cps
4:		
5:		
6:		

Serial Number:	13
Tool Model:	GROH
Performed:	Mon Oct 30 14:29:24 2000
Calibrator Value:	120 GAPI
Background Reading:	41.4866 cps
Calibrator Reading:	105.884 cps
Sensitivity:	1.88436 GAPI/cps