



COMPANY: EXXON COMPANY U.S.A.
 WELL: L.C. 6-32-4
 FIELD: WEST FELIX
 COUNTY: HENDRY
 STATE: FLORIDA
 LOCATION: 2837 E. U.S. 90 S.E. 32
 TUSSE R 28 E

PERMANENT DATUM: HYDRILL
 ELEV. OF PERM. DATUM: ELEVATIONS-
 LOG MEASURED FROM: SERVICE
 BRG. MEASURED FROM: DIBER NO
 306667

DEPTH-MILLER: 8002.0 F
 BFM-DIG INTERVAL: 1990.0 F
 TDP LOG INTERVAL: 1990.0 F
 CASING-MILLER: 1319.0 F
 CASING-DIGGER: 1319.0 F
 BIT SIZE: 13 3/8
 DEPTH: 18 1/4

FLORIDA GEOLOGICAL SURVEY
 2285 VICTORIA AVENUE, SUITE 170
 FT. MYERS, FLORIDA 33901

OTHER SERVICES-

TYPE FLUID IN HOLE: SALTWATER
 DENSITY:
 VISCOSITY:
 PH:
 FLUID LOSS:
 SOURCE OF SAMPLE: AT
 RHI: AT
 RHF: AT
 RHC: AT
 SOURCE RHF/RHC: AT
 RN AT BHT: AT
 RNF AT BHT: AT
 RNC AT BHT: AT

TIME CIRC. STOPPED:
 TIME LOGGER ON BTH.:

MAX. REC. TEMP:

LOGGING UNIT NO: 8306
 LOGGING UNIT LOC: FT. MYERS
 RECORDED BY: SCHULER
 WITNESSED BY: BUCK

REMARKS:

EQUIPMENT NUMBERS-

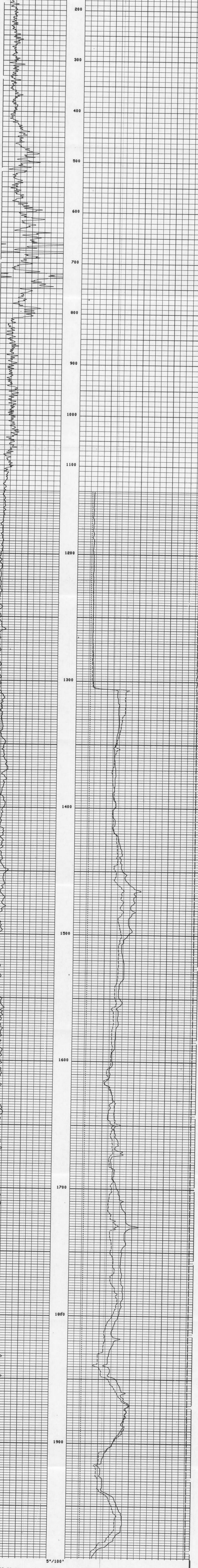
ALL INTERPRETATIONS ARE OPINIONS BASED ON INFERENCES FROM ELECTRICAL OR OTHER MEASUREMENTS AND WE CANNOT, AND DO NOT GUARANTEE THE ACCURACY OR CORRECTNESS OF ANY INTERPRETATIONS, AND WE SHALL NOT, EXCEPT IN THE CASE OF GROSS OR WILLFUL NEGLIGENCE ON OUR PART, BE LIABLE OR RESPONSIBLE FOR ANY LOSS, COSTS, DAMAGES OR EXPENSES INCURRED OR SUSTAINED BY ANYONE RESULTING FROM ANY INTERPRETATION MADE BY ANY OF OUR OFFICERS, AGENTS OR EMPLOYEES. THESE INTERPRETATIONS ARE ALSO SUBJECT TO OUR GENERAL TERMS AND CONDITIONS AS SET OUT IN OUR CURRENT PRICE SCHEDULE.

CP 30.4 FILE 6 19-MAR-90 16136

CEMENT VOLUME = 1303.72 F3
 HOLE VOLUME = 1303.72 F3
 FROM 1990.0 TO 5.0 FEET

GR (GAPI)	100.00	10000. TENS(LB)	0.0
		BS (IN)	30.000
		CR (IN)	30.000
		CI (IN)	30.000

CP 30.4 FILE 6 19-MAR-90 16135
 INPUT FILES 3 DATA ACQUIRED 19-MAR-90 16120



CP 30.4 FILE 6 19-MAR-90 16129
 INPUT FILES 3 DATA ACQUIRED 19-MAR-90 15154

GR (GAPI)	100.00	10000. TENS(LB)	0.0
		BS (IN)	30.000
		CR (IN)	30.000
		CI (IN)	30.000

CP 30.4 FILE 5 19-MAR-90 16128
 INPUT FILES 1 DATA ACQUIRED 19-MAR-90 15148

GR (GAPI)	100.00	10000. TENS(LB)	0.0
		BS (IN)	30.000
		CR (IN)	30.000
		CI (IN)	30.000

BEFORE SURVEY CALIBRATION SUMMARY

PERFORMED: 19-MAR-90 15122
 PROGRAM FILE: DMS (VERSION 30.4 90/01/10 87/11/19)

BGT CALIPER CALIBRATION SUMMARY

	MEASURED	SMALL	LARGE	CALIBRATED	SMALL	LARGE	UNITS
C1	7.58	14.3	8.00	16.0	16.0	IN	
C2	7.35	14.1	8.00	16.0	16.0	IN	

FLORIDA GEOLOGICAL SURVEY
 2285 VICTORIA AVENUE, SUITE 170
 FT. MYERS, FLORIDA 33901