

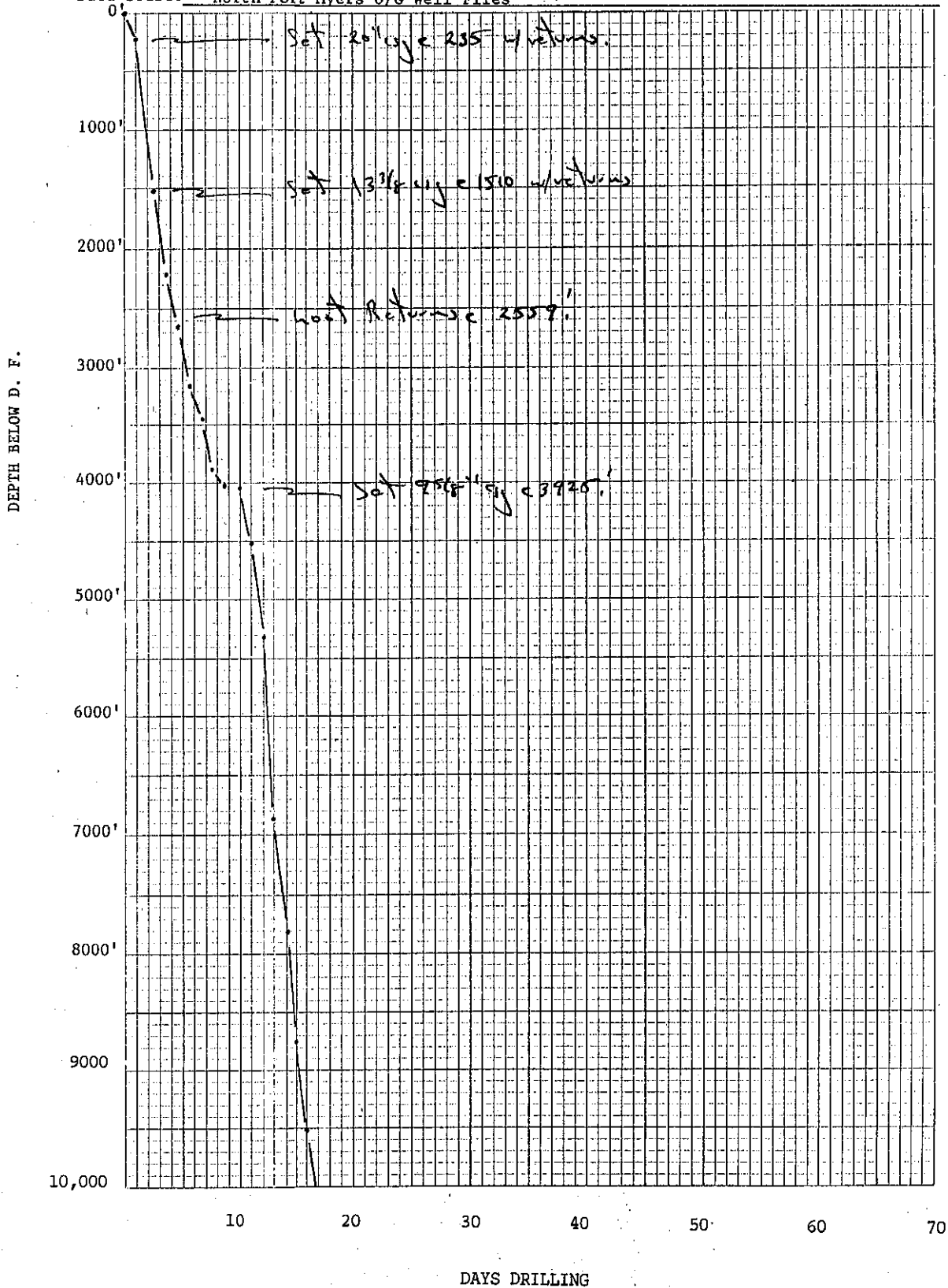
Well No. 885 [W-13,975] Elevation G.L. 13.5' D.F. 38.2' K.B.

Location 1500' FNL, 1120' FEL County Collier

Sec. 36 T 50S R 31E TD 11,900'

Well or Owner's Name Exxon 36-1 Oleum Corporation

Data Source North Fort Myers O/G Well Files



885, W-13,975 Exxon 36-1 Oleum Corp.  
1500' FNL, 1120' FEL, Sec. 36, T50S R31E  
Collier County (Immokalee 4SW Quad)  
GL 13.5', DF 38' - Spud 5/3/78 - P & A 6/1/78

*885 is the  
only oil test  
well in  
Immokalee 4SW Quad*

Brief Lith Log of Washed Cuttings by C. V. Cook 11/94

<u>Depth</u>	<u>Description</u>
0- 30	Wh calc Ss, w/1% bl phos grs, mollusk frags and echinoid spines
30- 60	Wh-lt gray, sandy, rexl, fos Ls; mollusk frags
60- 90	V sandy Ls as above; minor lt gray calc Ss w/5% bl phos grs and mollusk frags
90-120	Lt gray calc Ss w/5% bl phos grs, 30% wh, v sandy, part rexl Ls and mollusk frags
120-180	Milky wh-colorless, subang-subrnd, crse-pebble size Qz sand, mollusk frags, 5% lt gray Ss as above, rare wh, sandy Ls as above and 1% bl phos pebbles
180-210	Grayish olive green, sl calc clay; loose, colorless, ang-subang, f g Qz sand; minor wh, sandy Ls; 1% bl and brn phos pebbles
210-235	Lt gray-colorless, subang-rnd, crse-pebble size Qz sand, 10% bl and brn fos phos grns-pebbles and a few shark's teeth
235-265	Colorless, ang-subang, f g-med Qz sand, minor pebble size Qz sand, 30% grayish olive green, sl calc clay, 10% yel/gray, sandy, silty Dol and 1% bl and brn phos pebbles
265-295	As above w/30% yel/gray Dol and 15% clay
295-325	F-med Qz sand as above w/1% bl and brn phos frags and 10% pale olive, sandy Dolosilt
325-355	50/50 mix of Dolosilt and f-med Qz sand as above; rare phos frags
355-415	Wh-grayish yellow, silty, sandy Ls w/1% bl phos grs; some part dolo-mitized, 5% loose f-med Qz sand, 5% loose bl phos grs, minor cheilostome bryozoa and echinoid spines ; 1% bl phos pebbles; mollusk frags
415-445	Ls as above; minor f-med Qz sand, common cheilostome bryozoa & 1% bl phos grs & grns.
445-475	Ls as above, 10% f-med Qz sand and 10% bl phos grs
475-625	As above w/5% bl and brn fos phos frags
625-655	Yellowish gray, v f g, sucrosic Dol w/rare bl phos grs, minor wh, chalky Ls w/1% bl phos grs and 5% bl and brn fos phos frags

885, W-13,975 Exxon 36-1 Oleum Corp. (con't)

<u>Depth</u>	<u>Description</u>
655- 685	Dol as above, 20% wh Ls as above, 20% lt gray olive Dolosilt and 10% bl and brn phos grns
685- 715	40% Ls, 30% Dolosilt, 20% Dol as above and 10% bl and brn phos grns
715- 745	Yel/gray, v f g, sucrosic Dol, 20% Ls as above, 10% f g, subang Qz sand and 10% bl and brn phos grs and grns
745- 775	Wh, chalky Ls, 30% lt olive gray Dolosilt, 5% yel/gray, v f g, sucrosic Dol, 5% f g Qz sand and 3% bl phos grs-grns
775- 805	Wh, chalky, fos Ls
805- 835	Ls as above; some Ls is part rexal; common cheilostome(?) bryozoa.
835- 895	Ls as above; minor yel/gray Dolosilt
895- 985	Wh, chalky, fos Ls; some sandy w/brn phos grs and some w/calcite crystals; minor v p o Ls
985-1195	Wh- v p o, sandy, silty Ls; mollusk frags
1195-1295	Wh-yellowish gray, sl sandy, part rexal, moldic, fos Ls and minor v p o wh, v sandy Ls
1295-1335	V p o, sl chalky, granular, micritic part rexal, fos Ls
1335-1365	Wh-v p o, chalky, granular, part rexal fos Ls w/minor <u>Lepidocyclina</u>
1365-1435	Ls as above w/common <u>Lepidocyclina</u> .
1435-1500	Ls as above w/common <u>Lepidocyclina</u> and minor <u>Camerina</u> .
1500-1620	V p o, granular, part rexal Ls; some w/Dol rhombs in matrix; common <u>Dictyoconus cookei</u> and rare brn carb matter
1620-1650	Ls as above; 20% w/aggregates of Dol rhombs in matrix; common <u>D. cookei</u>
1650-1680	Ls as above; 20% grayish orange, med, xln aggregates of Dol rhombs and common <u>D. cookei</u> .
1680-1710	Ls as above, 30% Dol as above and common <u>D. cookei</u> .
1710-1770	Ls as above, 40% med gray-grayish orange Dol as above, common <u>D. cookei</u> and minor brn carb matter.
1770-1800	Ls as above, 10% grayish orange Dol as above, minor <u>D. cookei</u> and rare carb matter
1800-1830	Wh-v p o, granular-micritic, part rexal, fos Ls, minor Dol as above and rare <u>D. cookei</u> and carb matter

885, W-13,975 Exxon 36-1 Oleum Corp. (con't)

<u>Depth</u>	<u>Description</u>
1830-1860	As above, common miliolids and rare <u>Fabularia vaughani</u> .
1860-1920	V p o, granular, part rexal Ls, cmt and rare <u>Dictyoconus americanus</u> .
1920-2100	Ls as above; common <u>D. americanus</u> .
2100-2130	Ls as above; rare carb matter, common <u>D. americanus</u> and rare dk yel/brn, med xln Dol
2130-2220	Ls above; minor carb matter and common <u>D. americanus</u> .
2220-2250	V p o, granular, part rexal, fos Ls, common <u>D. americanus</u> , minor wh-dk yel/brn, dolomitic anhydrite & rare gray orange, f-med, xln, aggregate of Dol rhombs
2250-2280	V p o, granular, part rexal, fos Ls; 20% w/dk yel/brn dolomitic stringers, 10% grayish orange Dol rhombs as above and rare <u>D. americanus</u> .
2280-2340	Ls as above; some w/Dol rhombs in matrix and some w/carbonaceous laminations; rare grayish orange Dol rhombs as above.
2340-2400	V p o, granular, part rexal, fos Ls; minor colorless-dk yel/brn, f-crse xln Dol; rare carb matter.
2400-2430	80% Ls and 20% Dol as above.
2430-2460	V p o, chalky, granular, part rexal, fos Ls and rare Dol as above.
2460-2490	V p o, chalky, granular, part rexal, fos Ls and 35% grayish orange, f g - crse xln Dol; some as aggregates of Dol rhombs.
2490-2520	Grayish orange-dk yel/brn, v f g-med, xln Dol; minor lt gray, micritic Dol; rare Ls as above.
2520-2550	Grayish orange, f g - crse, xln Dol, some as aggregates of rhombs; 50% v p o, granular sl chalky Ls; some w/Dol rhombs in matrix.
2550-2580	60% Dol and 40% Ls as above.
2580-4000	Samples missing (reported lost returns at 2559' DF)
4000-4720	Not logged