



RMBAKER LLC

WELL: SNIVELY_GW5
LOG STAGE:

Geology and Geophysics

8600 Oldbridge Lane
Orlando, FL 32819
mobile ph 407-733-8958
fax 407-370-4129

LOGS PROVIDED:
HRAT IMAGING

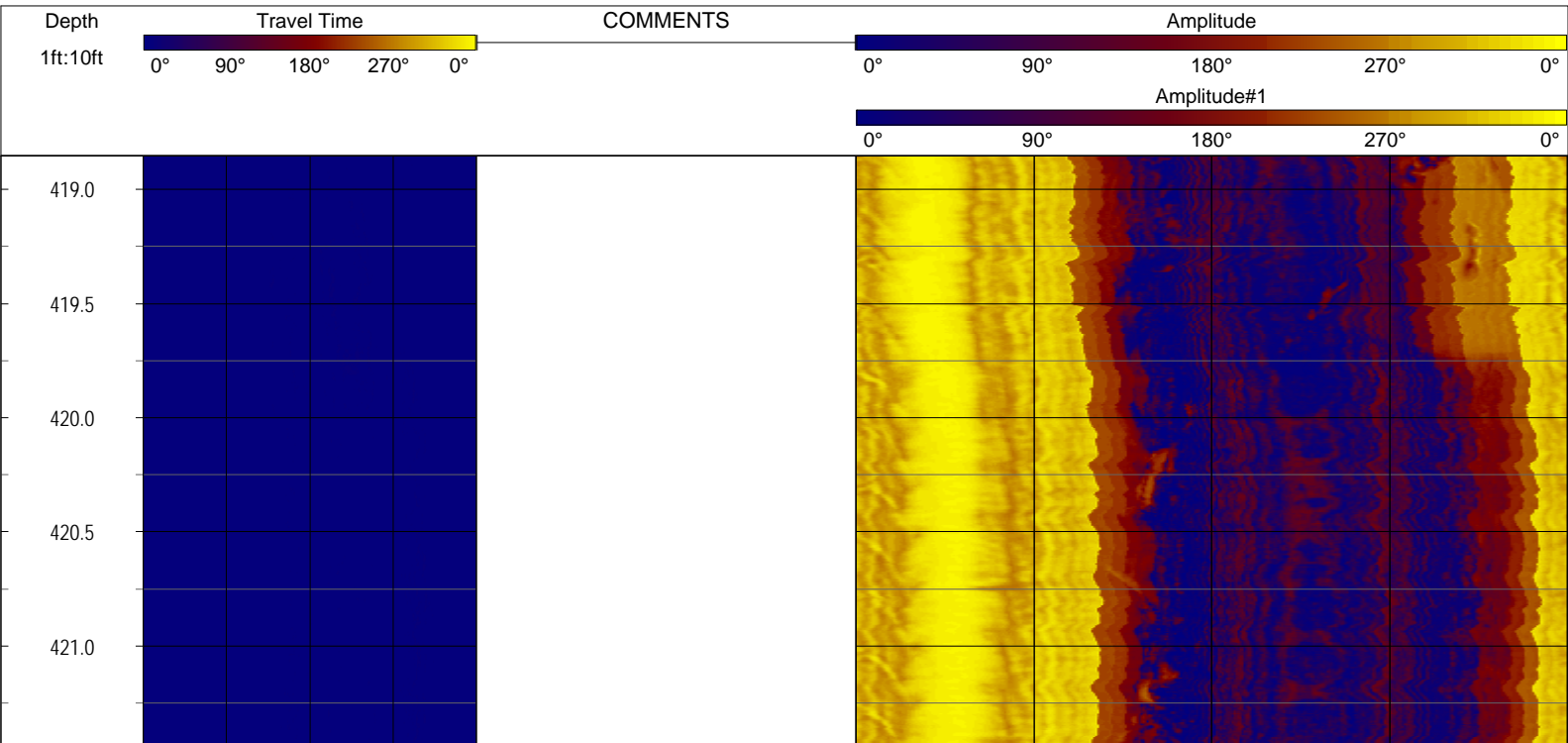
rob@rmbaker.com
www.rmbaker.com

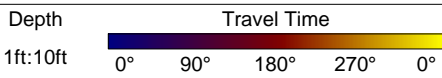
Licensed and Insured

SRVC	RMBAKER LLC	COMPANY:	RMBAKER LLC
UWI	SNIVELY_GW5 POF25	WELL NAME:	SNIVELY_GW5 POF-25
FLD	SNIVELY	FIELD:	SNIVELY
PROV	FLORIDA	COUNTRY:	USA
CTY	POLK	STATE:	FL
		COUNTY:	POLK
PERMANENT DATUM:		LOC:	
LOG MEAS. FROM: TOP OF CASING		NOTES:	OBSTRUCTION AT 445.99; SCREENED INTERVAL NOT SEEN
DRILLING MEAS. FROM:		SEC	TWP
		RGE	
		ELEVATION:	
		COORDINATES:	

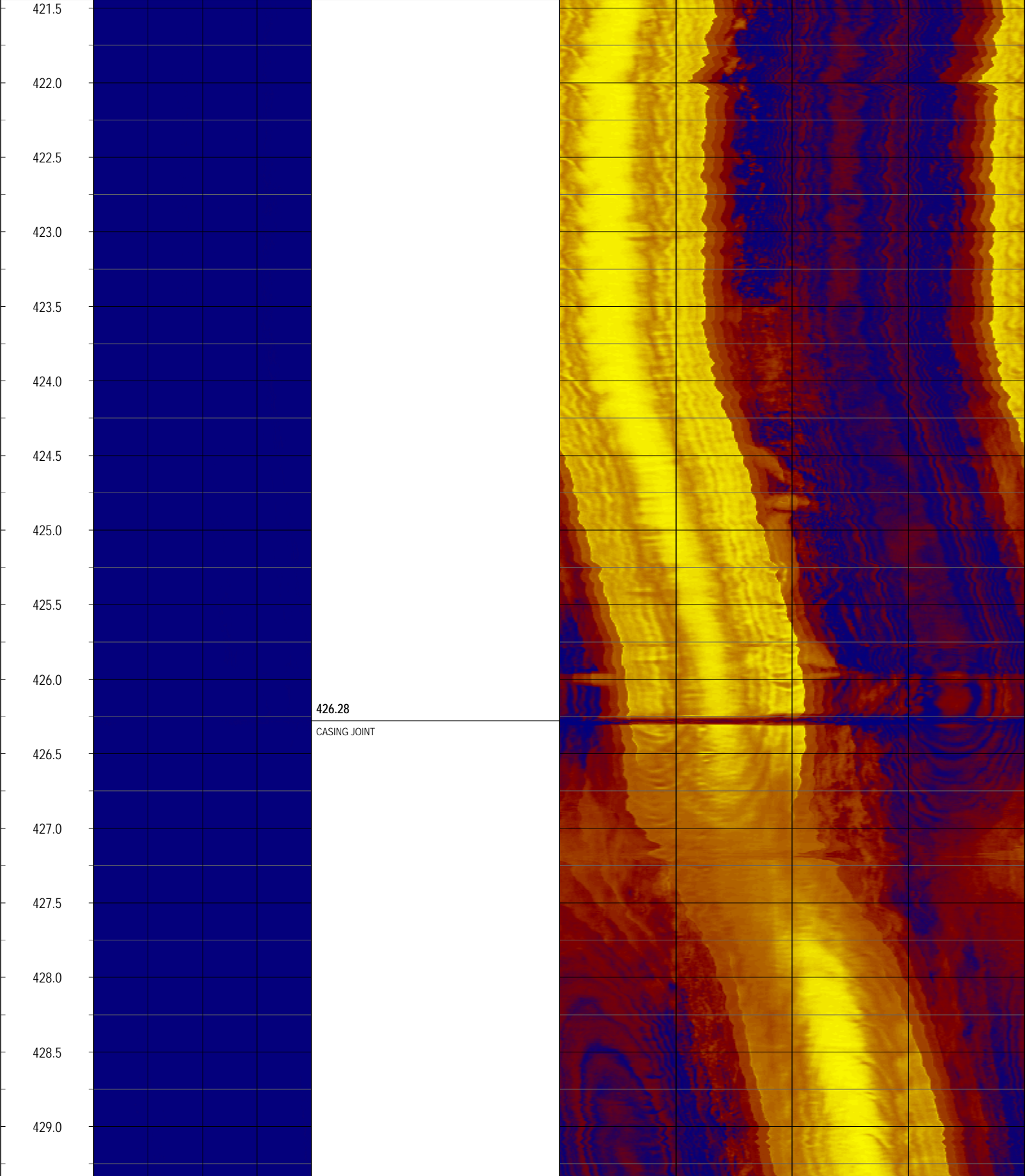
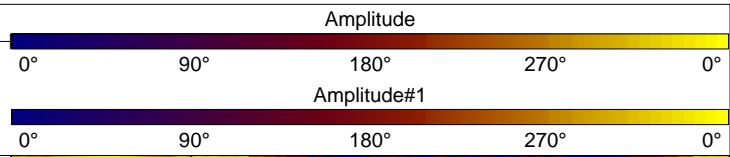
DATE	19 Jun 2012	TYPE FLUID IN HOLE	
RUN No	1	SALINITY	
TYPE LOG	HRAT	DENSITY	
DEPTH-DRILLER		LEVEL	
DEPTH-LOGGER	445.99	MAX. REC. TEMP.	
BTM LOGGED INTERVAL		LOGGING SPEED (FT/MIN)	2
TOP LOGGED INTERVAL		TROLLING DIRECTION	UP
DRILLER		PUMPING RATE (GPM)	
RECORDED BY	RMB		
WITNESSED BY			

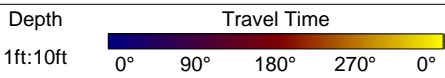
BOREHOLE RECORD		CASING RECORD					
RUN NO.	BIT	FROM	TO	SIZE	MAT.	FROM	TO
				2	PVC	0	445.99



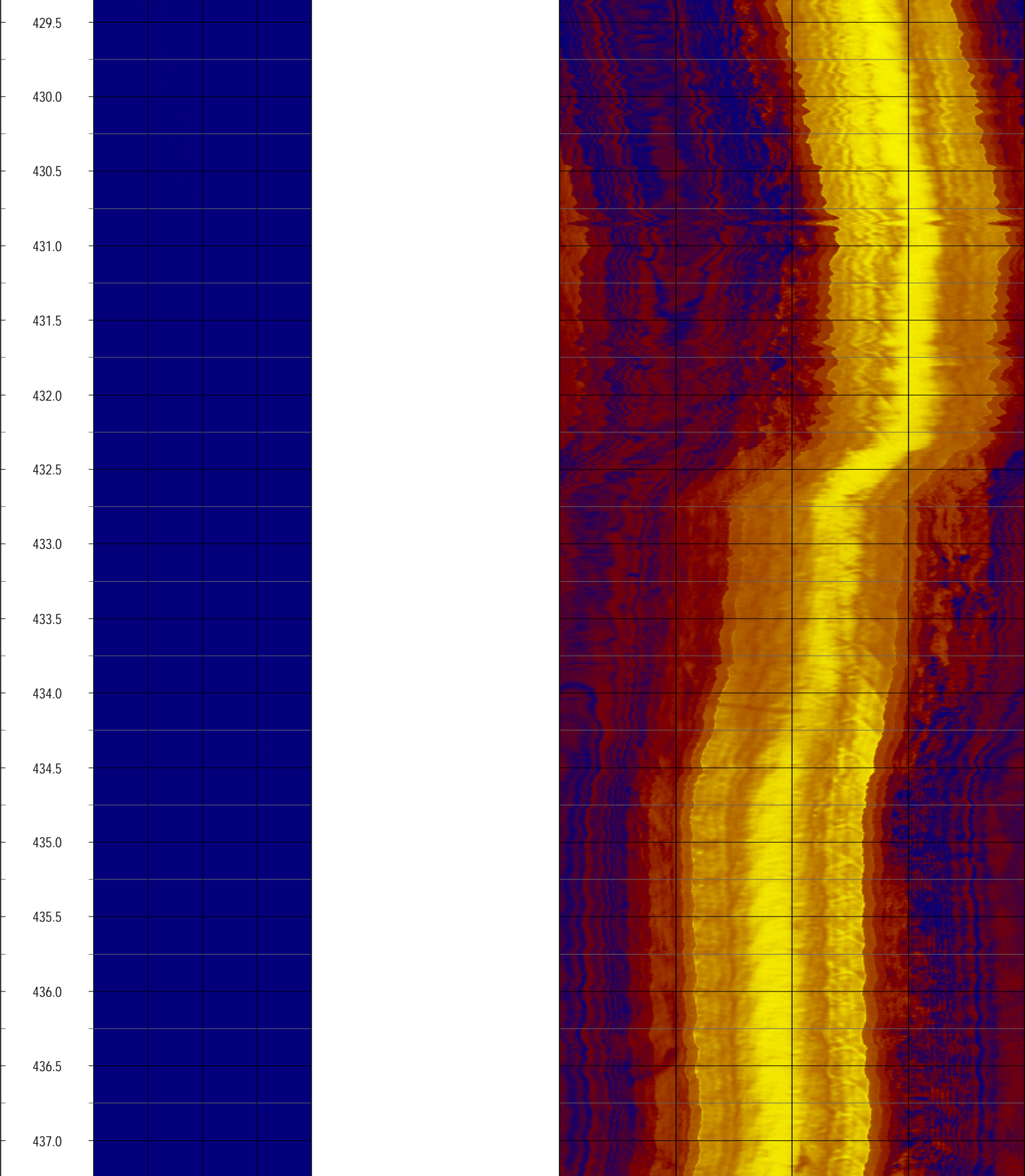
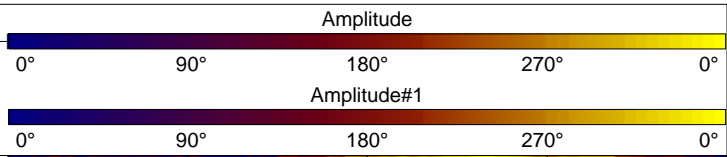


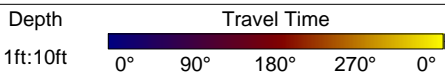
COMMENTS



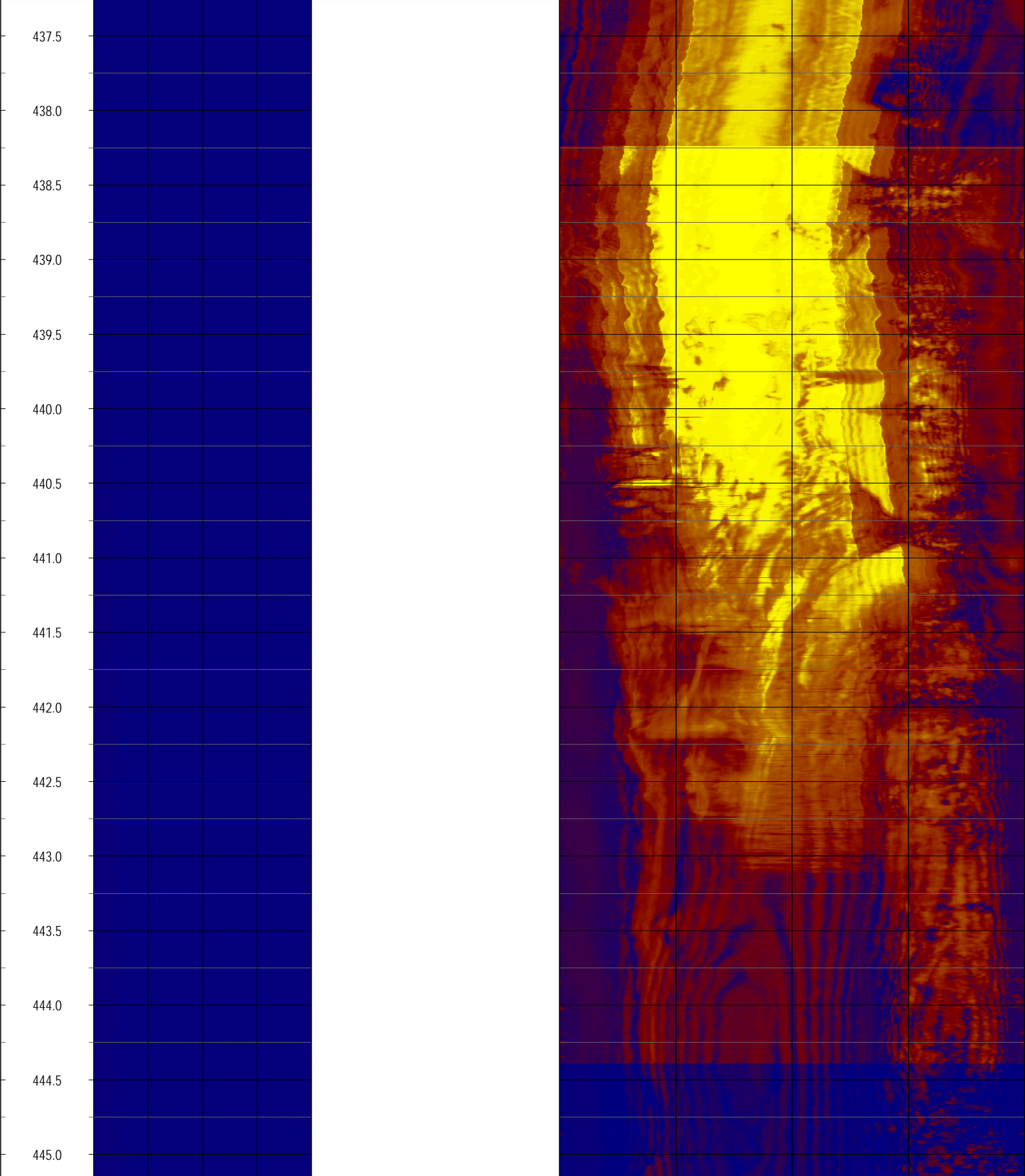
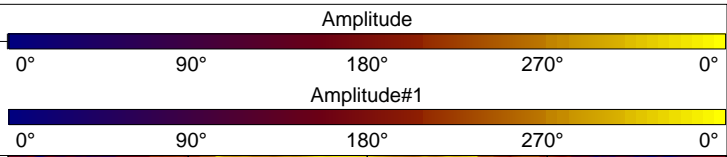


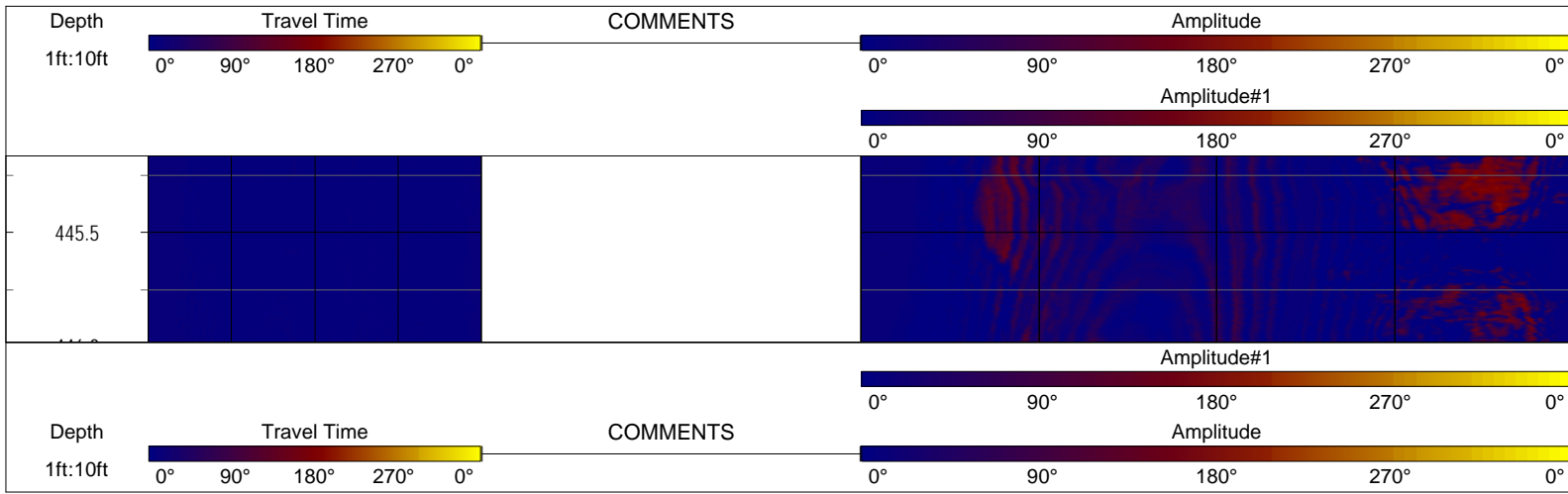
COMMENTS





COMMENTS





NOTES:

While due care has been exercised in the performance of these measurements and observations, in accordance with methodologies utilized by the general practitioner, RMBAKER LLC can make no representations, warranties, or guarantees with respect to latent or concealed conditions that may exist, which may be beyond the detection capabilities of the methodologies used, or that may extend beyond the areas and depths surveyed.
 The geophysical well logs show subsurface conditions as they existed at the dates and locations shown, and it is not warranted that they are representative of subsurface conditions at other locations and times.
 If, at any time, different subsurface conditions from those observed are determined to be present, we must be advised and allowed to review and revise our observations if necessary.

Certificate of Authorization GB 458

END OF LOG