

Port St. Lucie Westport

Class I Injection Facility No. 89

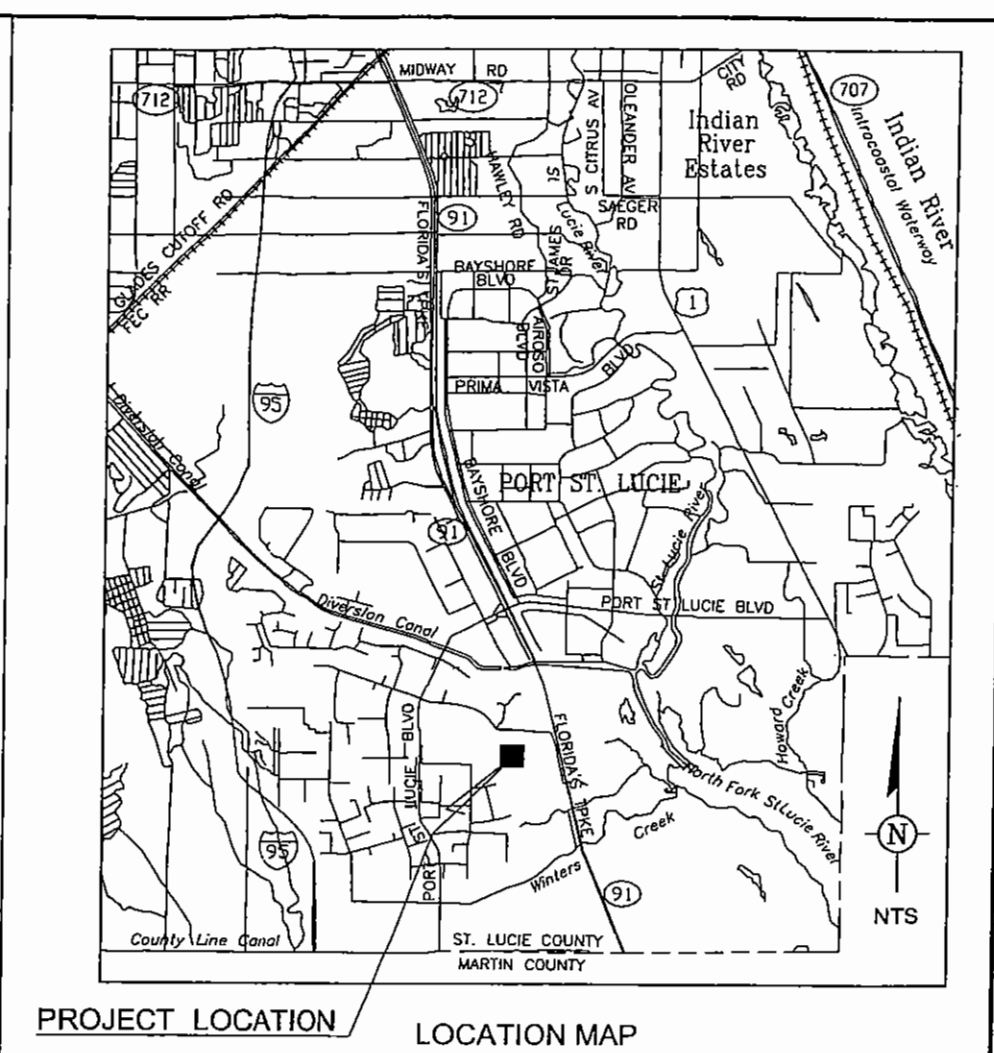
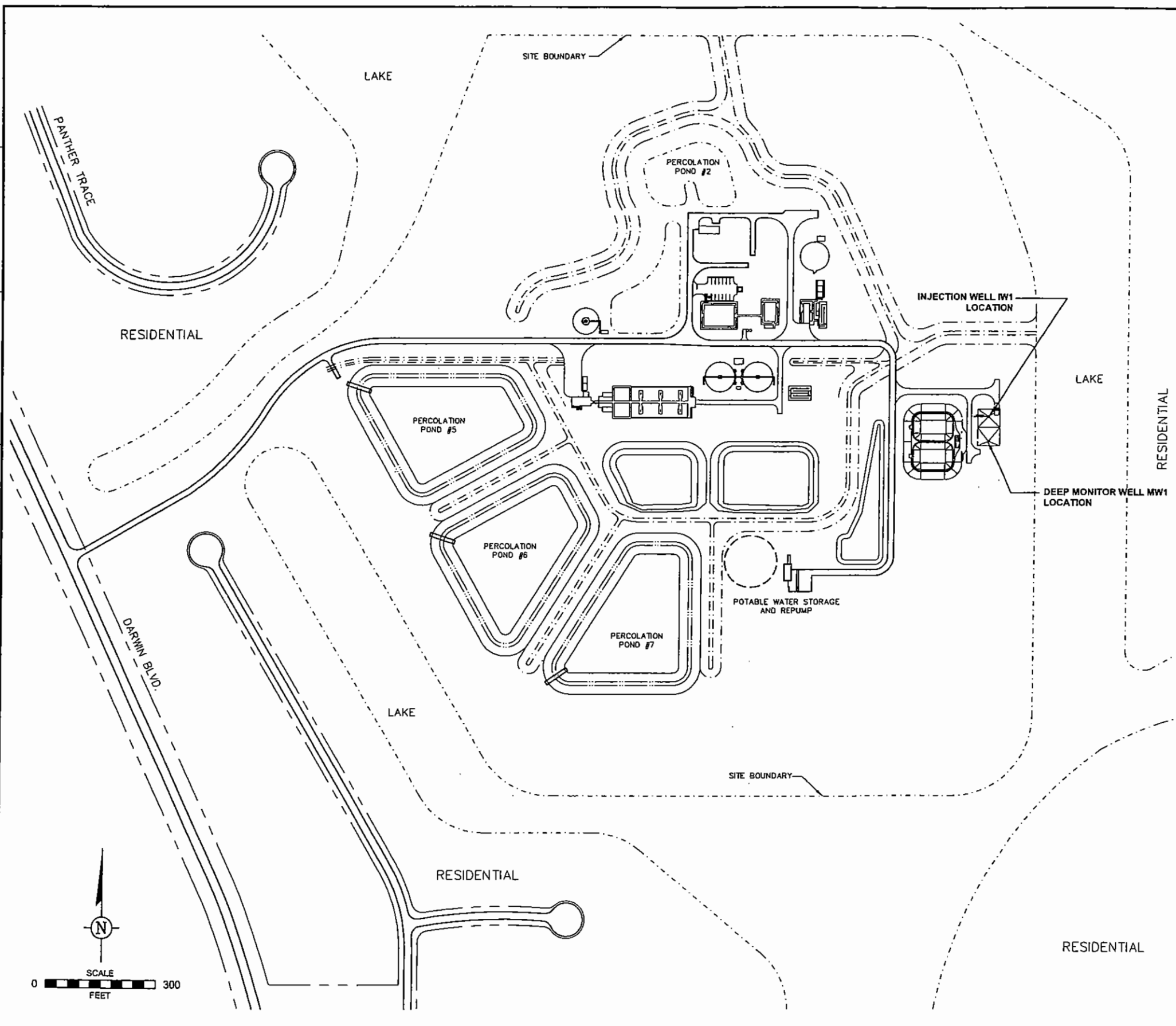
ADIS

ings, environment, communications

**CONSTRUCTION AND
TESTING SUMMARY REPORT**

CITY OF PORT ST. LUCIE,
WESTPORT INJECTION WELL SYSTEM,
WESTPORT WASTEWATER
TREATMENT PLANT, JULY 2004
VOLUME I

DRFT: B.O.LI.VA
 PO: T.TESSIER
 PM: M.WALDRON
 DRAWING: U11902-SMB
 FILE: RMA111802
 PRJCT NO: RF001121.0001.PF001
 DATE: 28AUG
 COPYRIGHT 2003



PROJECT LOCATION LOCATION MAP

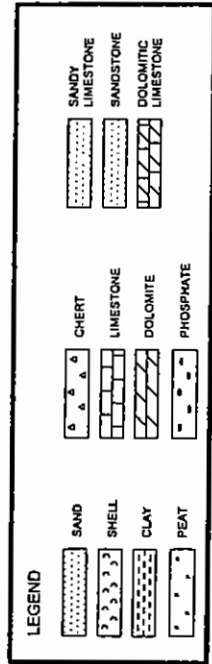
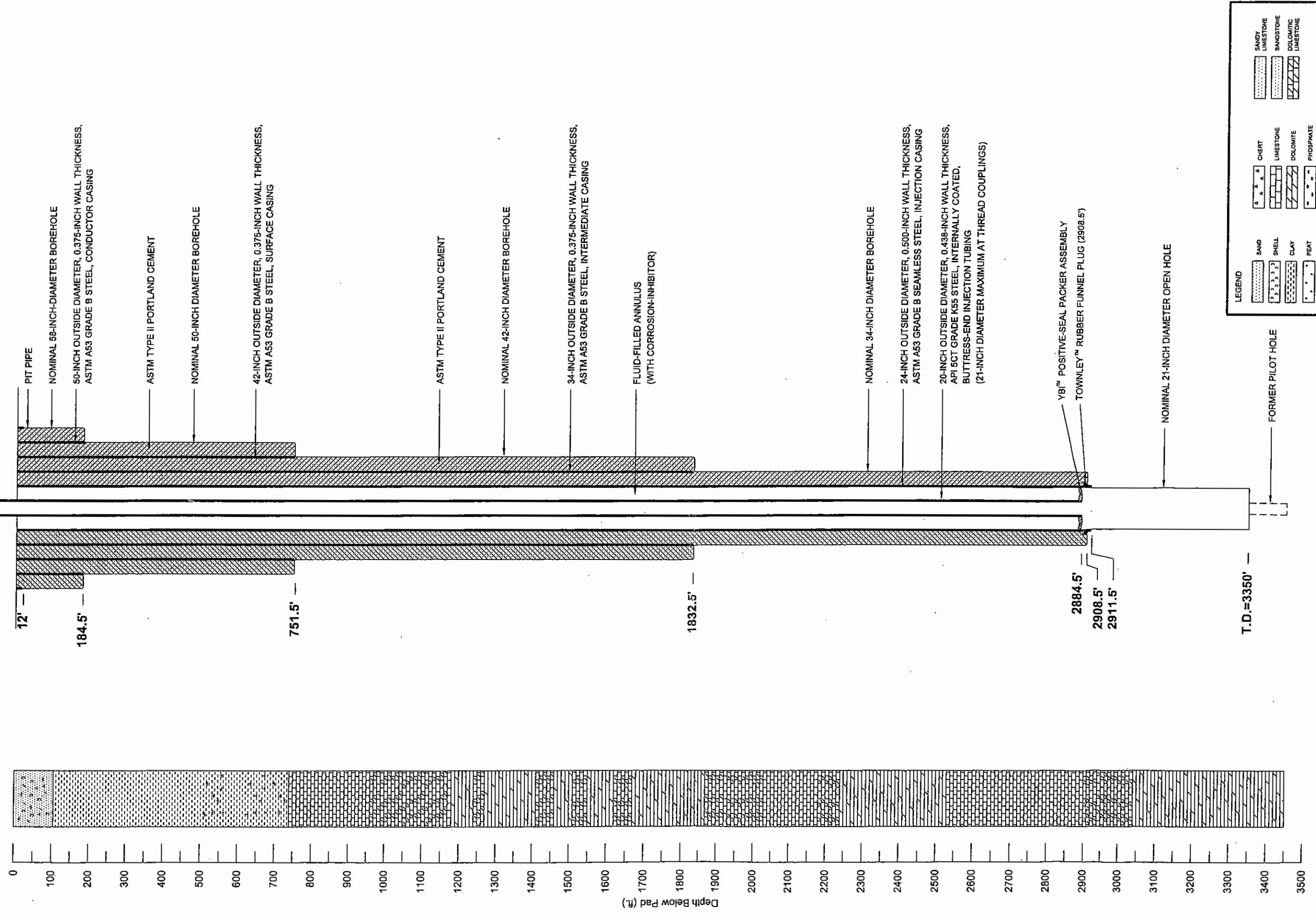
SOURCE: Reese, Macon & Associates, Inc.

NO.	DATE	REVISION DESCRIPTION	CHKD.

712 U.S. HIGHWAY ONE, SUITE 200
 NORTH PALM BEACH, FLORIDA 33408
 Tel: 561.881.0077 Fax: 561.881.0012

SITE LAYOUT SHOWING INJECTION WELL IW1 AND DEEP MONITOR WELL LOCATIONS

CITY OF PORT ST. LUCIE
 WESTPORT WASTEWATER TREATMENT PLANT
 ST. LUCIE COUNTY, FLORIDA



Drawing not to scale

NO.	DATE	REVISION DESCRIPTION	CHKD.

ARCADIS
 712 U.S. HIGHWAY ONE, SUITE 200
 NORTH PALM BEACH, FLORIDA 33408
 Tel: 561.881.0077 Fax: 561.881.0012

COPYRIGHT 2003

**INJECTION WELL IW1
CONSTRUCTION DETAIL**

CITY OF PORT ST. LUCIE
WESTPORT WASTEWATER TREATMENT PLANT
ST. LUCIE COUNTY, FLORIDA

DRFT: B.O

PO: T.TESSIER

PM: M.WALDRON

W

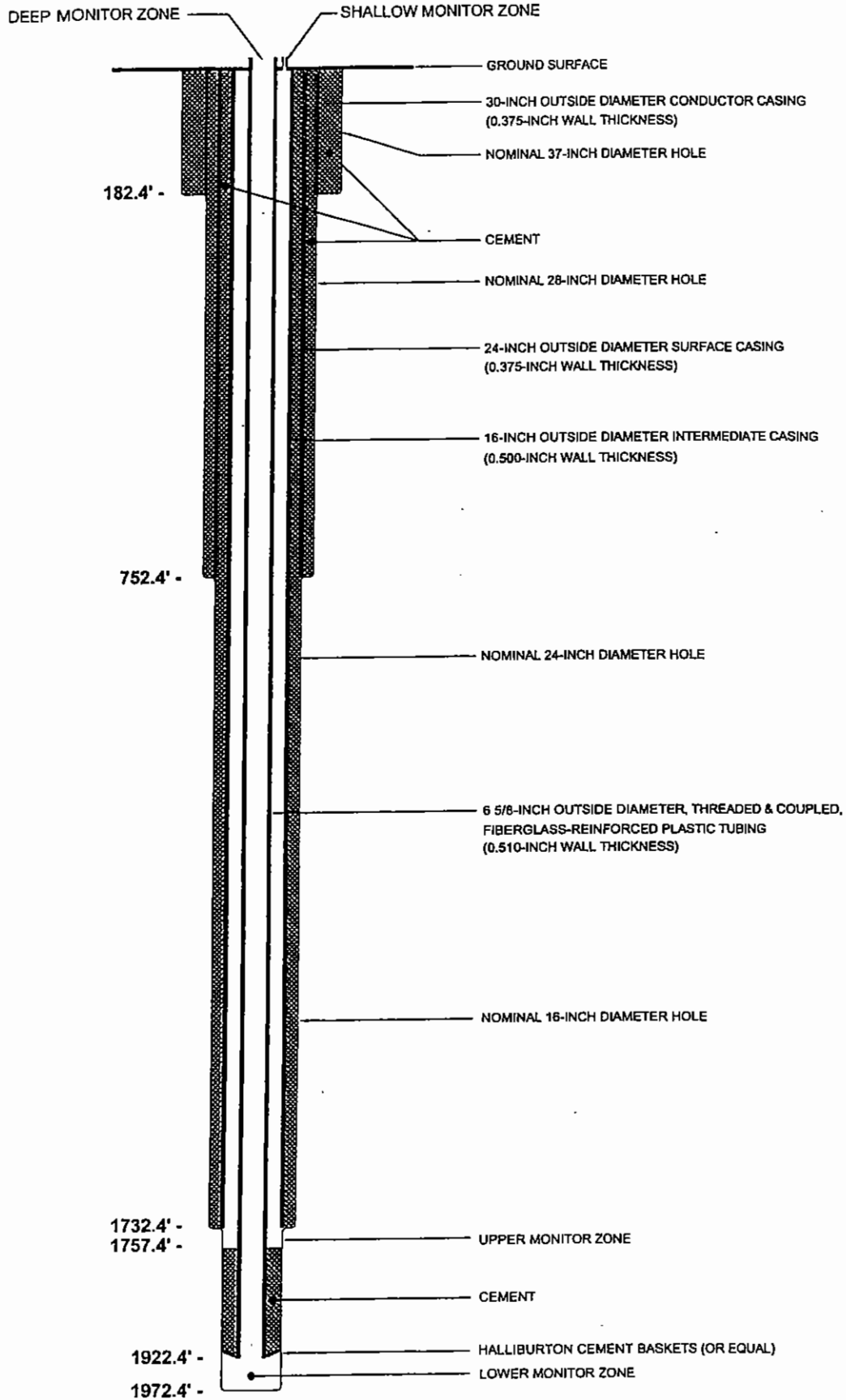
DRAWING: 0111E

FILE: RMA111902

NO: RF001121.0001.PF001

F

DATE: 30JUL03
YRIGHT 2003



DRAWING NOT TO SCALE



ARCADIS

712 U.S. HIGHWAY ONE, SUITE 200

DEEP MONITOR WELL MW1 CONSTRUCTION DETAIL

CITY OF PORT ST. LUCIE

FIGURE

3