



# RMBAKER LLC

Geology and Geophysics

WELL: PZ5D  
LOG STAGE: EXPLORATORY

8600 Oldbridge Lane  
Orlando, FL 32819  
mobile ph 407-733-8958  
fax 407-370-4129

**LOGS PROVIDED:**  
INDUCTION RESISTIVITIES  
NATURAL GAMMA

[rob@rmbaker.com](mailto:rob@rmbaker.com)  
[www.rmbaker.com](http://www.rmbaker.com)

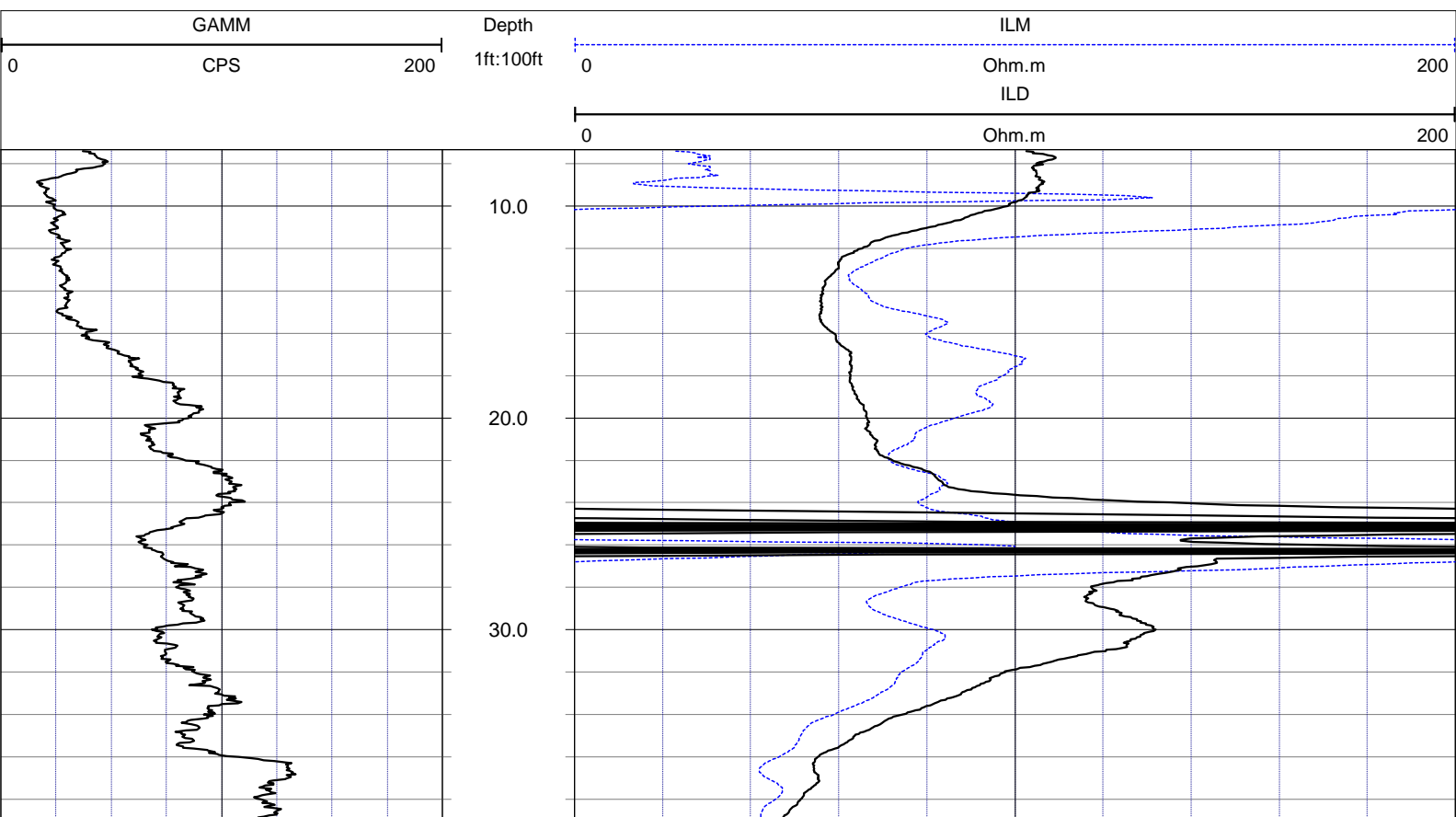
Licensed and Insured

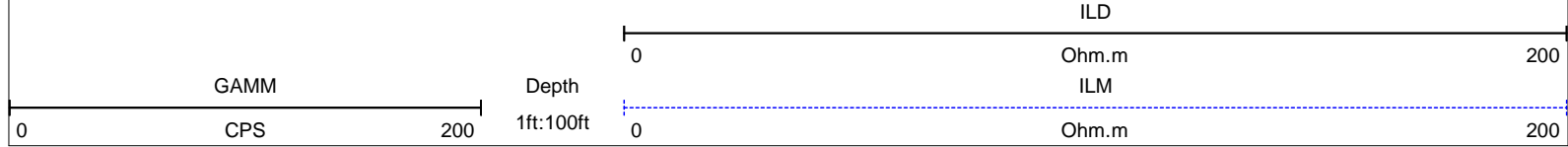
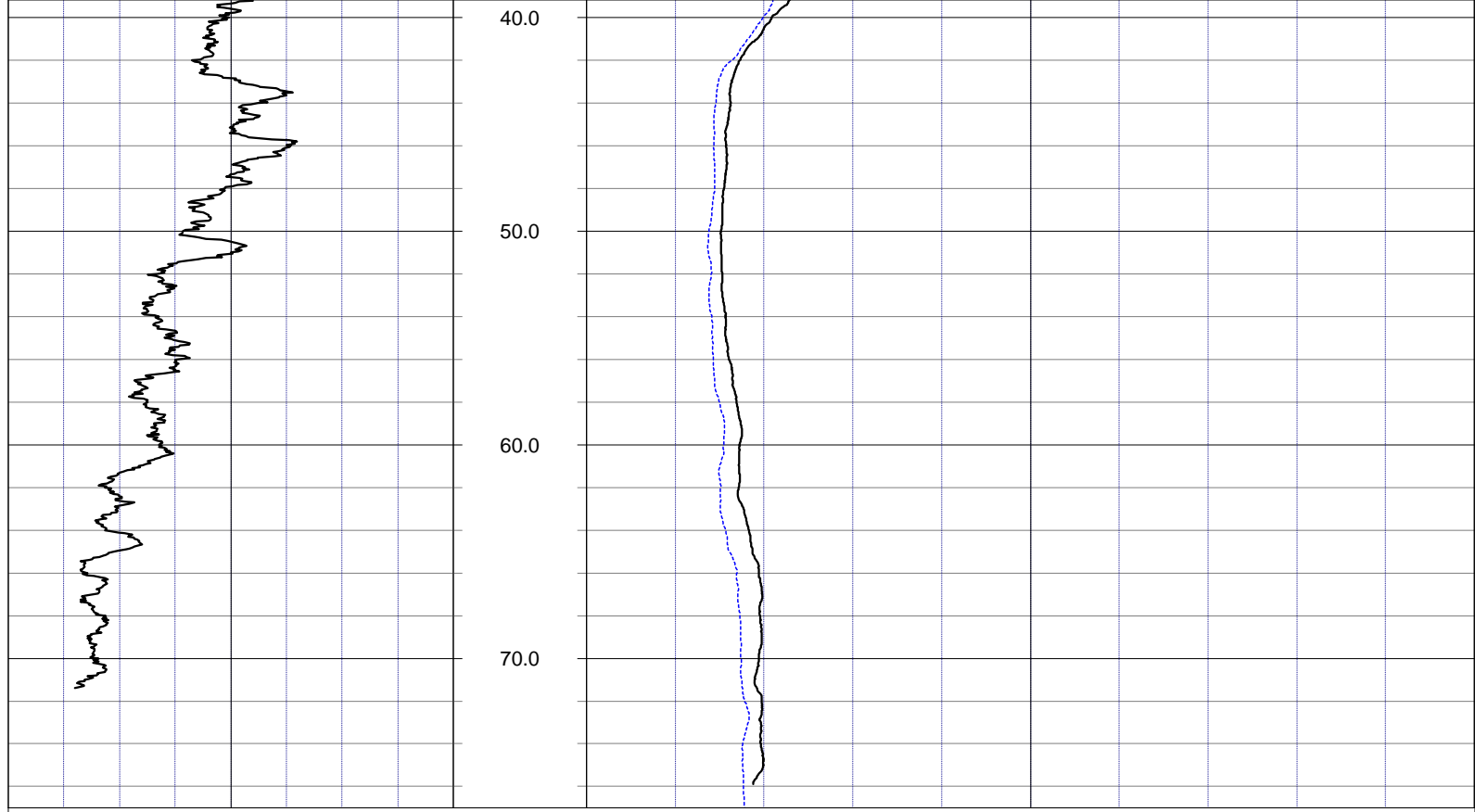
SRVC	RMBAKER LLC	COMPANY:	RMBAKER LLC
UWI	PZ5D	WELL NAME:	PZ5D
FLD	L-8 RESERVOIR	FIELD:	L-8 RESERVOIR
PROV	FL	COUNTRY:	USA STATE: FL COUNTY: PALM BEACH
CTY	PALM BEACH	LOC:	N/A
		NOTES:	ALL SERVICES: DUAL INDUCTION NATURAL GAMMA VIDEO
PERMANENT DATUM:	SEC	TWP	RGE
			ELEVATION:

LOG MEAS. FROM:	TOP OF PVC CASING	COORDINATES:	-80D21M49.01S 26D43M24.39S
DRILLING MEAS. FROM:			

DATE	14 May 14	TYPE FLUID IN HOLE	WATER
RUN No	1	SALINITY	
TYPE LOG	DUAL INDUCTION	DENSITY	
DEPTH-DRILLER		LEVEL	
DEPTH-LOGGER	78.2 (VIDEO)	MAX. REC. TEMP.	
BTM LOGGED INTERVAL		LOGGING SPEED (FT/MIN)	20
TOP LOGGED INTERVAL		TROLLING DIRECTION	UP
DRILLER		PUMPING RATE (GPM)	
RECORDED BY	RMBAKER LLC		
WITNESSED BY	J. JANZEN		

BOREHOLE RECORD				CASING RECORD			
RUN NO.	BIT	FROM	TO	SIZE	MAT.	FROM	TO
1				2	PVC	0	78.2
				SCREEN		73.3	77.7





**NOTES:**

While due care has been exercised in the performance of these measurements and observations, in accordance with methodologies utilized by the general practitioner, RIMBAKER LLC can make no representations, warranties, or guarantees with respect to latent or concealed conditions that may exist, which may be beyond the detection capabilities of the methodologies used, or that may extend beyond the areas and depths surveyed. The geophysical well logs show subsurface conditions as they existed at the dates and locations shown, and it is not warranted that they are representative of subsurface conditions at other locations and times. If, at any time, different subsurface conditions from those observed are determined to be present, we must be advised and allowed to review and revise our observations if necessary.

Certificate of Authorization GB 458

**END OF LOG**