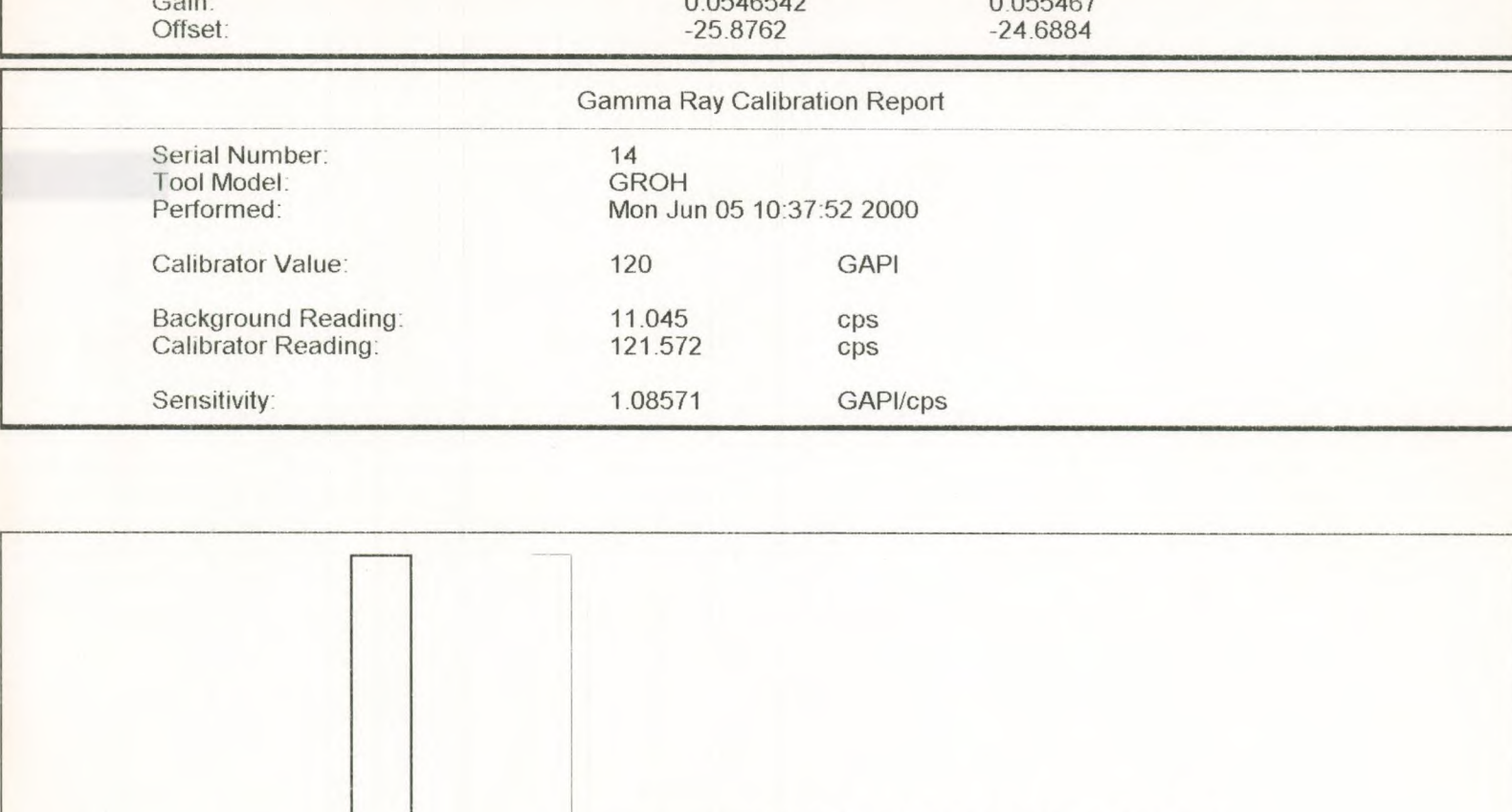
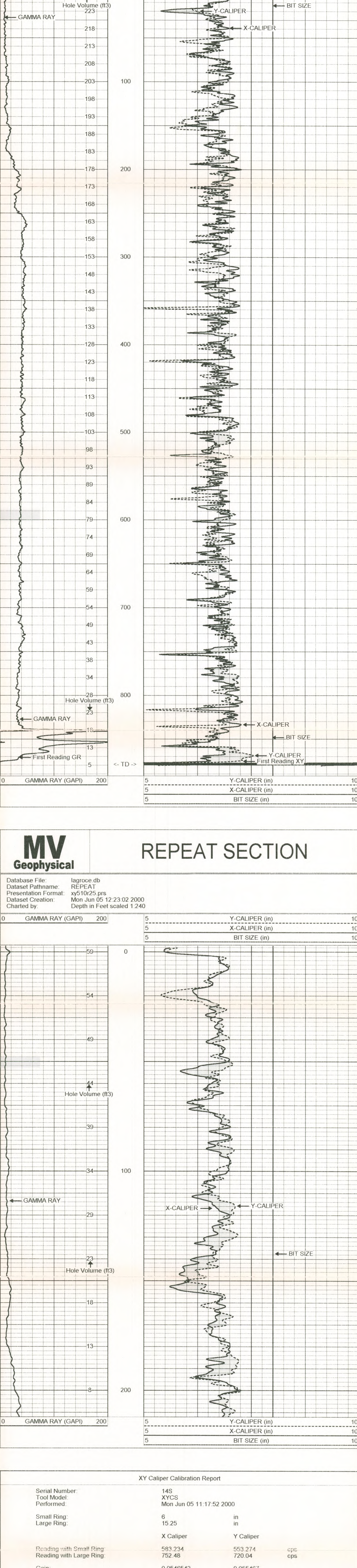
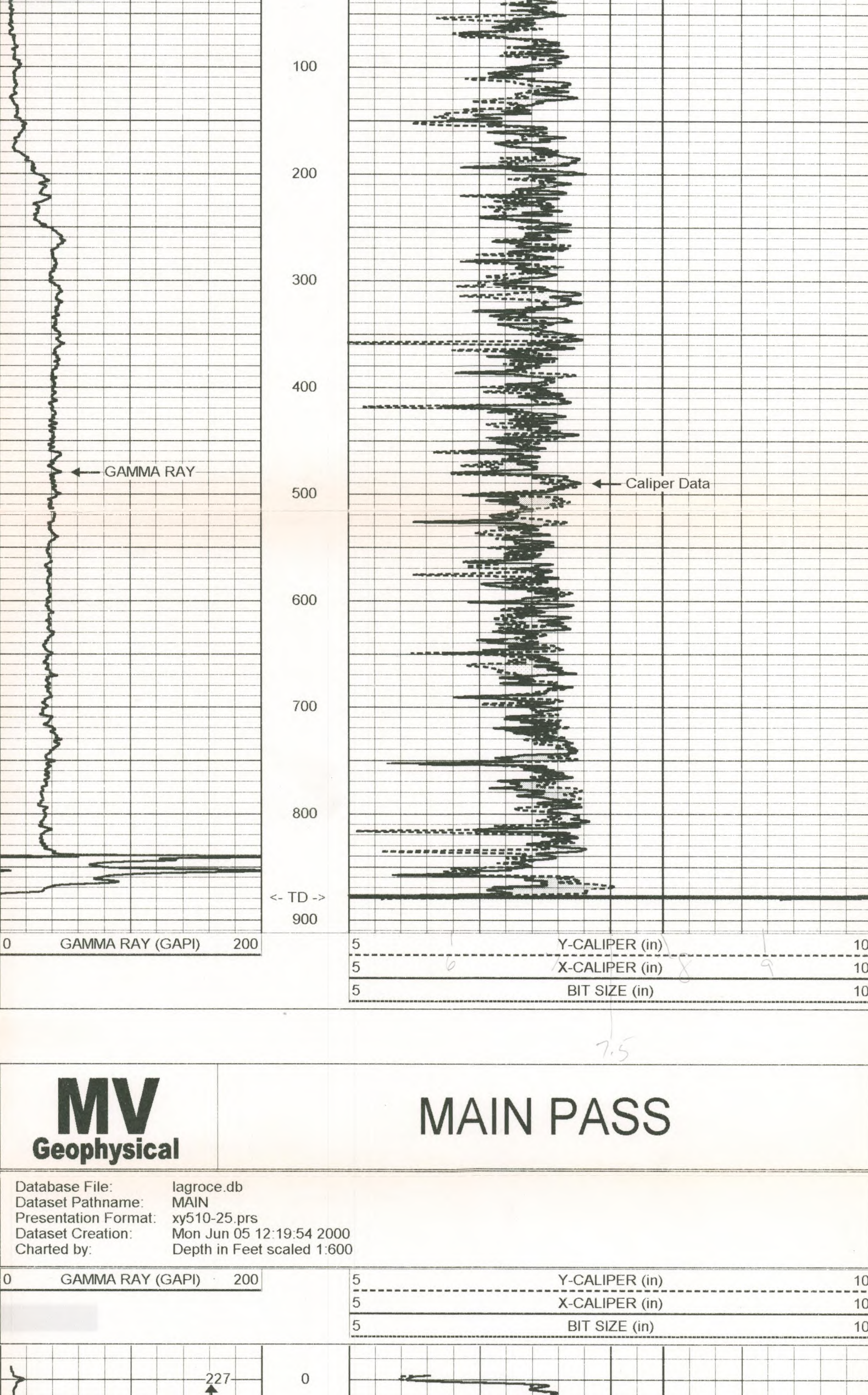


Company	La Gorce Country Club	Other Services	
Well	La Gorce Floridian 38	FCT	
Field	Miami Beach	Video	
Country	Dade		
State/Prv	Florida		
Location	La Gorce Country Club 5685 Alton Road Miami Beach, Florida 33140	Elevation	na
Permanent Datum	Ground Level	K.B. na	
Log Measured from	Ground Level	D.F. na	
Dating Measured from	Ground Level	G.L. na	
Date	5-JUN-2000		
Log Number			
Depth Driver	897		
Bottom Logger	897		
Bottom Logged Interval	897		
Top Log Interval	Surface		
Tool Bit Size			
Tool Bit			
Density / Viscosity	WATER		
Max Recorded Temp.	83.5F/NA		
Estimated Cement Top	NA		
Time Log on Bottom	11:30 S-JUN-20		
Time Log on Bottom	11:30 S-JUN-20		
Equipment Number	AWGS-1		
Location	FT MYERS		
Recorded by	MULLEN/VINCENT		
Witnessed by	G.WITT (OWN)		
Run Number	ONE		
Bit	8"		
Size	885'		
Weight	957		
From			
To			
Ground Record			
Surface String	5'		
Production String	NA		
Bottom	885'		
Order No.	2000110		

All interpretations are opinions based on inferences from electrical or other measurements and we cannot and do not guarantee the accuracy or correctness of any interpretation, and we shall not, except in the case of gross or willful negligence on our part, be liable or responsible for any loss, costs, damages, or expenses incurred or sustained by anyone resulting from any interpretation made by any of our officers, agents or employees. These interpretations are also subject to our general terms and conditions set out in our current Price Schedule.

Comments	
----------	--



XY Caliper Calibration Report			
Serial Number:	14S		
Tool Model:	XYCS		
Performed:	Mon Jun 05 11:17:52 2000		
Small Ring:	6	in	
Large Ring:	15.25	in	
Reading with Small Ring:	583.234	553.274	cps
Reading with Large Ring:	752.48	720.04	cps
Gain:	0.0546542	0.055467	
Offset:	-25.8762	-24.6884	

Gamma Ray Calibration Report			
Serial Number:	14		
Tool Model:	GROH		
Performed:	Mon Jun 05 10:37:52 2000		
Calibrator Value:	120	GAPI	
Background Reading:	11.045	cps	
Calibrator Reading:	121.572	cps	
Sensitivity:	1.08571	GAPI/cps	

