

**DOWN
Construction
Preliminary Data
Blue Springs**

**Aquifer System Monitor Wells:
Floridan V-1091**

SJRWMD Program No. 31-58200

**Division of Ground Water Programs,
Department of Resource Management
St. Johns River Water Management District
Palatka, Florida**

October 20, 2000

*All data, figures, tables and information are provisional and generated for the Division
of Ground Water Program's use.*

Table of Contents

General Information

Site Location

Asbuilts

Water Levels

Drilling Rates

Water Quality

Grout Table

Lithologic Description

Geophysical Logs

General Information

Site: Blue Springs

Service Request: Bill Osburn Division of Ground Water Programs

Purpose: District Observation Well Network (Potentiometric Map Upper Floridan)

Work:

Monitor Well Reconstruction
SJRWMD

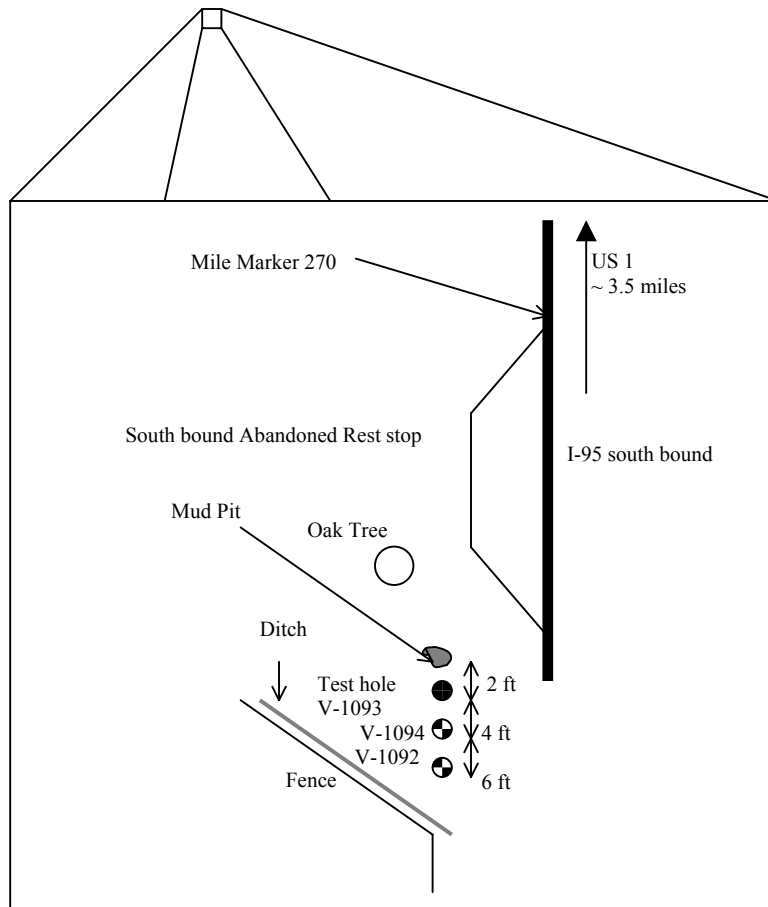
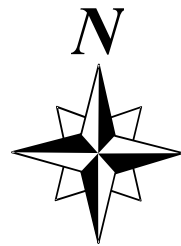
Geophysical Logging:
SJRWMD

Report: Robert Brooks and John Lombardi

Notes:

V-1091 (Floridan)

8/08/00, Well completed; constructed using both mud rotary and reverse air drilling methods.



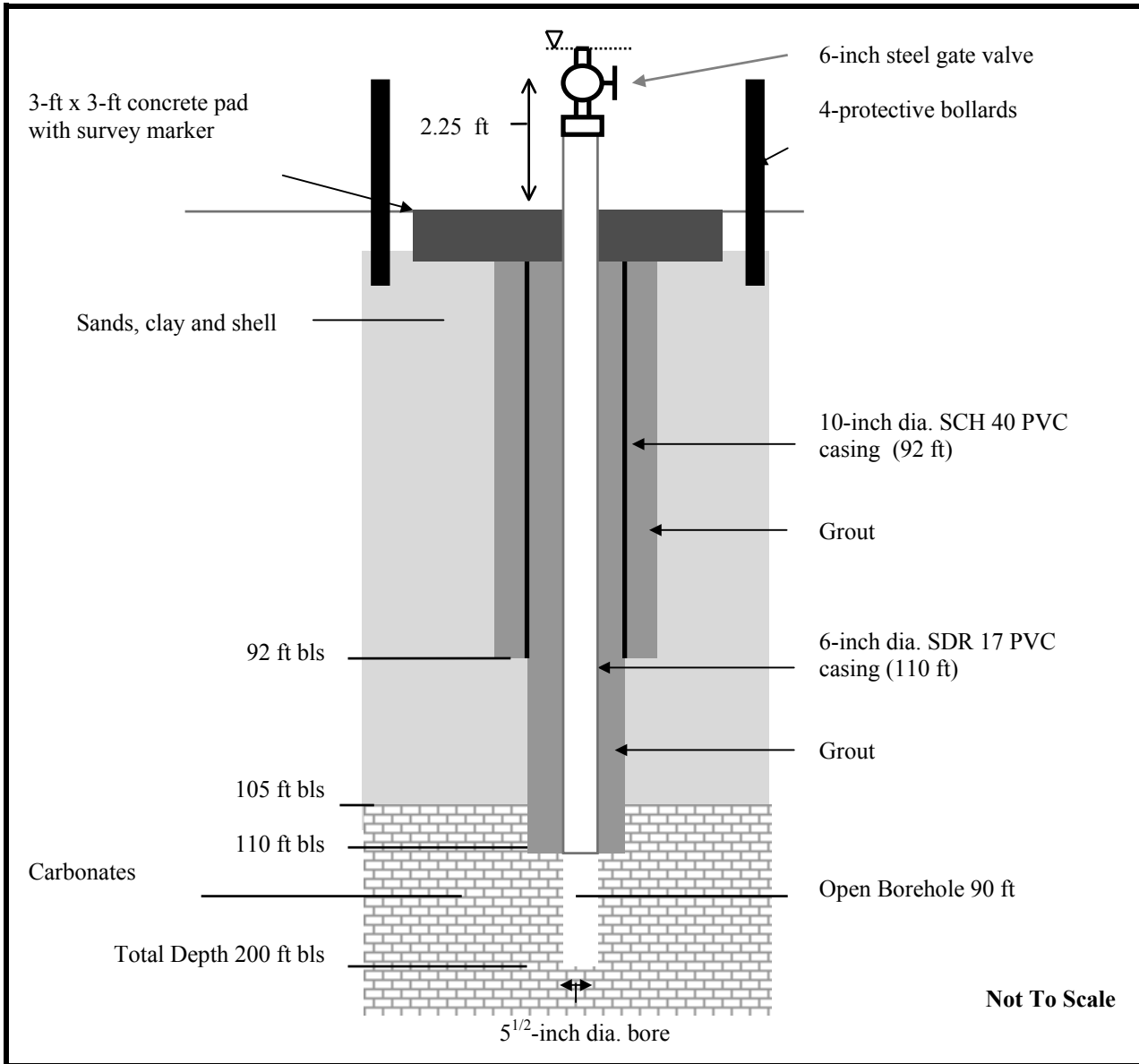
Not To Scale

Project: Blue Springs
GPS Lat/Long: 285513/812028
TRS: 183017
Topo: Orange City
Site Elevation: 11 ft NGVD

Project No: 31-58200

SJRWMD

Figure 1. Site Map



Site: Blue Springs
 Driller: SJRWMD
 Well Completed: July 20, 2000

SJRWMD

Figure 2. Floridan Monitor Well V-1091

Table 1.**Groundwater Levels and Drilling Data**Site: Blue SpringsWell ID: V-1091

Water Levels				Borehole		Drilling Data					
Static ✓	Date/Time (yymmdd/hhmm)	Casing (ft, bls)	Rod (ft, bls)	Total Depth (ft, bls)	Open Hole (ft)	Method Mud/RA	Bit Size (inch)	From (ft, bls)	To (ft, bls)	Time (min)	Rate (ft/hr)
	000712/1235	-	-	0	20	Mud	15	0	20	10	120
	000712/1325	-	-	20	32	Mud	15	20	32	10	72
	000712/1340	-	-	32	52	Mud	15	32	52	10	120
	000712/1400	-	-	52	72	Mud	15	52	72	15	80
	000712/1430	-	-	72	92	Mud	15	72	92	30	40
	000717/1100	-	-	92	112	Mud	9 ^{7/8}	92	112	35	34
	000717/1205	-	-	112	116	Mud	9 ^{7/8}	112	116	15	16
	000719/0850	-	-	110	120	Mud	5 ^{1/2}	110	120	20	30
	000719/0930	-	-	120	140	R/A	5 ^{1/2}	120	140	20	60
	000719/1040	-	-	140	160	R/A	5 ^{1/2}	140	160	20	60
	000719/1120	-	-	160	180	R/A	5 ^{1/2}	160	180	15	80
	000719/1235	5.50	4.43	180	200	R/A	5 ^{1/2}	180	200	25	48

Table 3.**Groundwater Quality**Site: Blue SpringsWell Number: V-1091Samples: John LombardiCasing Depth: 110 ft

LAB ✓	Date/Time (yy:mm:dd/hh:mm)	Sample Depth (ft, bls)	Open Hole (ft)	Temp (Deg C)	Chlorides (mg/L)	Specific Conductivity (us/cm)
✓	000719/1400	200	90	25.2	560	1124

Comments: Water quality of make-up water (7/11/00) chlorides 560 mg/L.

Developed with reverse air for 1-hour prior to sampling (gpm not recorded).

Table 4.**Grout Data**Site: Blue SpringsWell ID: V-1091

DATE	TAG DEPTH (ft)	ANNULUS/ BORE (in.)	QUANTITY (yds/bags)	MATERIAL	COMMENTS
7/12/00	92	A-15	20 bags	P-94	Set 92-ft of 10-inch dia. PVC casing; Grout through tremie pipe
7/13/00	36	A-15	20 bags	P-94	Grout through tremie pipe
07/17/00	3	A-15	2 bags	P-94	Grout to surface
07/17/00	110	A-10	20 bgs	P-94	Pressure grout 110-ft of 6-inch dia. SDR 17 PVC casing
07/18/00	38	A-10	-	-	Tag only
07/19/00	-	A-10	12 bgs	P-94	Grout through tremie pipe to surface

Lithologic Description

Site: Blue Springs

Well ID: V-1091

Samples Described By: John Lombardi

From (ft)	To (ft)	Lithology
0	5	Sand, grayish brown, very fine
5	10	Sand, grayish brown, very fine
10	15	Sand, light brown, very fine
15	20	Sand, light brown, very fine
20	25	Sand, very fine, light brown
25	30	Sand, tan and very fine
30	35	Sand, tan and very fine
35	40	Sand, tan and very fine
40	45	Sand, very dark brown, fine with clay inclusion
45	50	Sand, dark brown, very fine
50	55	Sand, light and dark brown 50/50 mix, very fine
55	60	Sand, light brown, very fine
60	65	Sand, brown, very fine
65	70	Sand, brown with gray clay inclusion
70	75	Clay, grayish green with dark brown sand
75	80	Clay, grayish green with sand and shell inclusion
80	85	Clay, grayish green with sand and shell inclusion
85	90	Shell, medium to fine with green clay inclusion
90	95	Shell, medium to fine with green clay inclusion
95	100	Shell, with an abundance of Avon park fossils with limestone inclusion
100	105	Shell, medium to fine with limestone inclusion
105	110	Limestone, medium to coarse with dolomite and shell inclusion
110	115	Limestone, medium to coarse with shell inclusion
110	120	Limestone, medium to coarse with shell inclusion
120	130	Limestone, SAB
130	140	Limestone, medium to coarse, yellowish white
140	150	Limestone, medium, yellowish white with shell inclusion
150	160	Limestone, medium, yellowish white with shell inclusion
160	170	Limestone, fine to medium, yellowish white
170	180	Limestone, medium, yellowish white
180	190	Limestone, medium, yellowish white with fossil inclusion
190	200	Limestone, medium, yellowish white and tan about a 50/50 mix

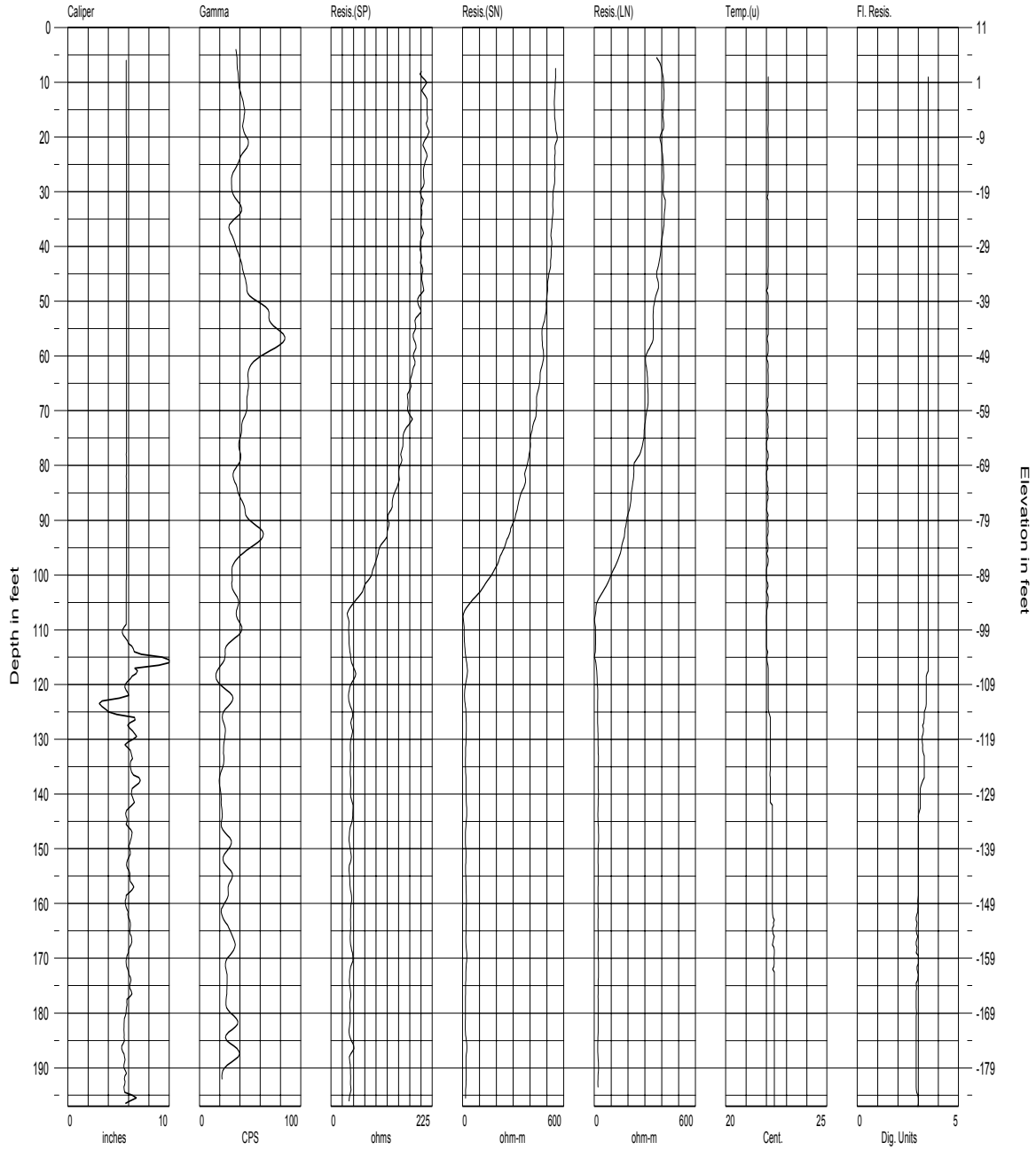
Geophysical Logs

Site: Blue Springs

Well ID: V-1091

Logger: SJRWMD

Date: 9/19/00



St. Johns River Water Management District Palatka, FL