

021-144

Immokalee 4 NW Quad

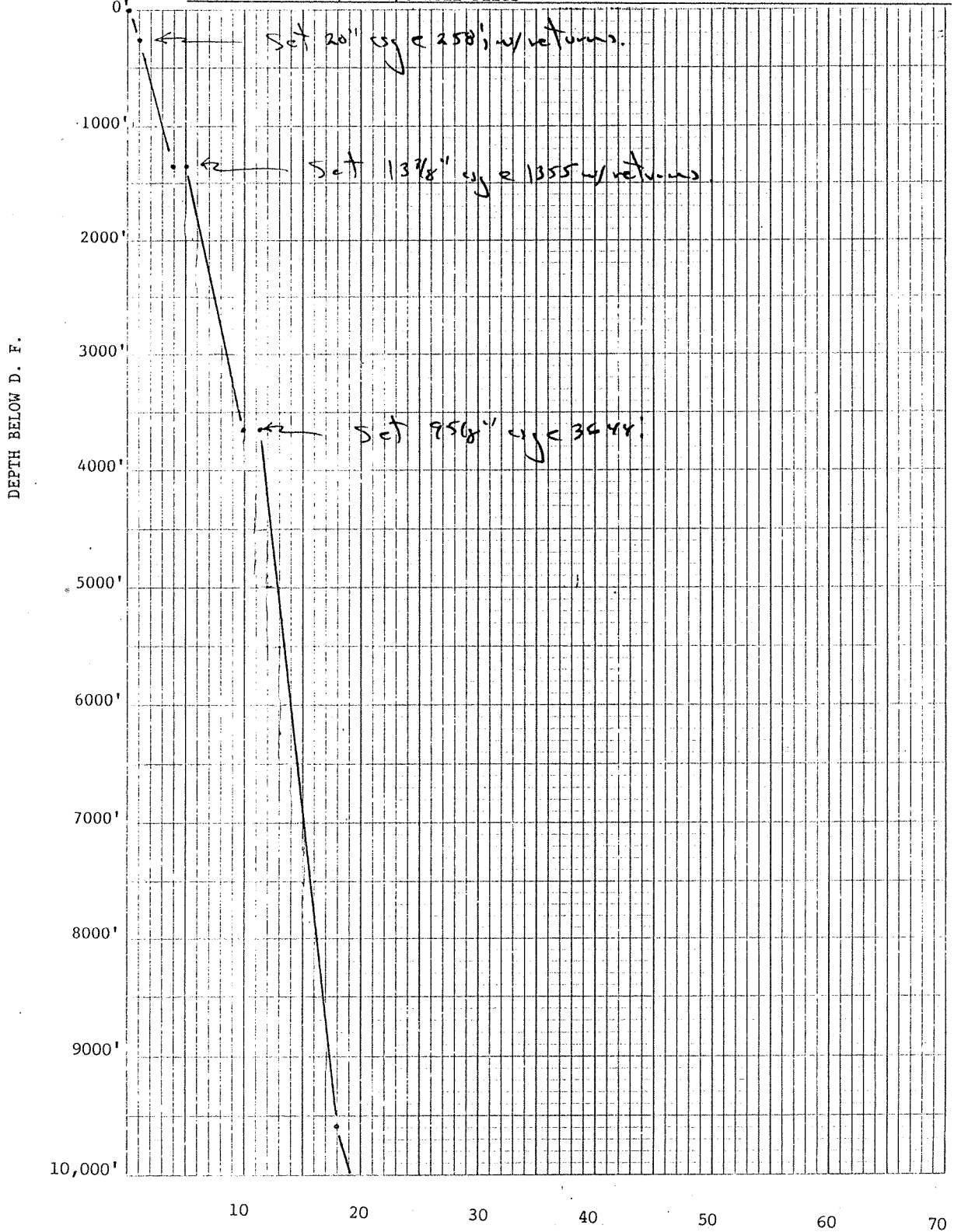
Well No. 799 [W-12,994] Elevation G.L. 15.7' D.F. 39.2' K.B. 40.3'

Location 1105' FSL, 1081' FEL County Collier

1/4 1/4 1/4 Sec. 34 T 49S R 31S TD 11,880'

Well or Owner's Name Exxon 34-4 Gerry Bros.

Data Source North Fort Myers O/G Well Files



DAYS DRILLING

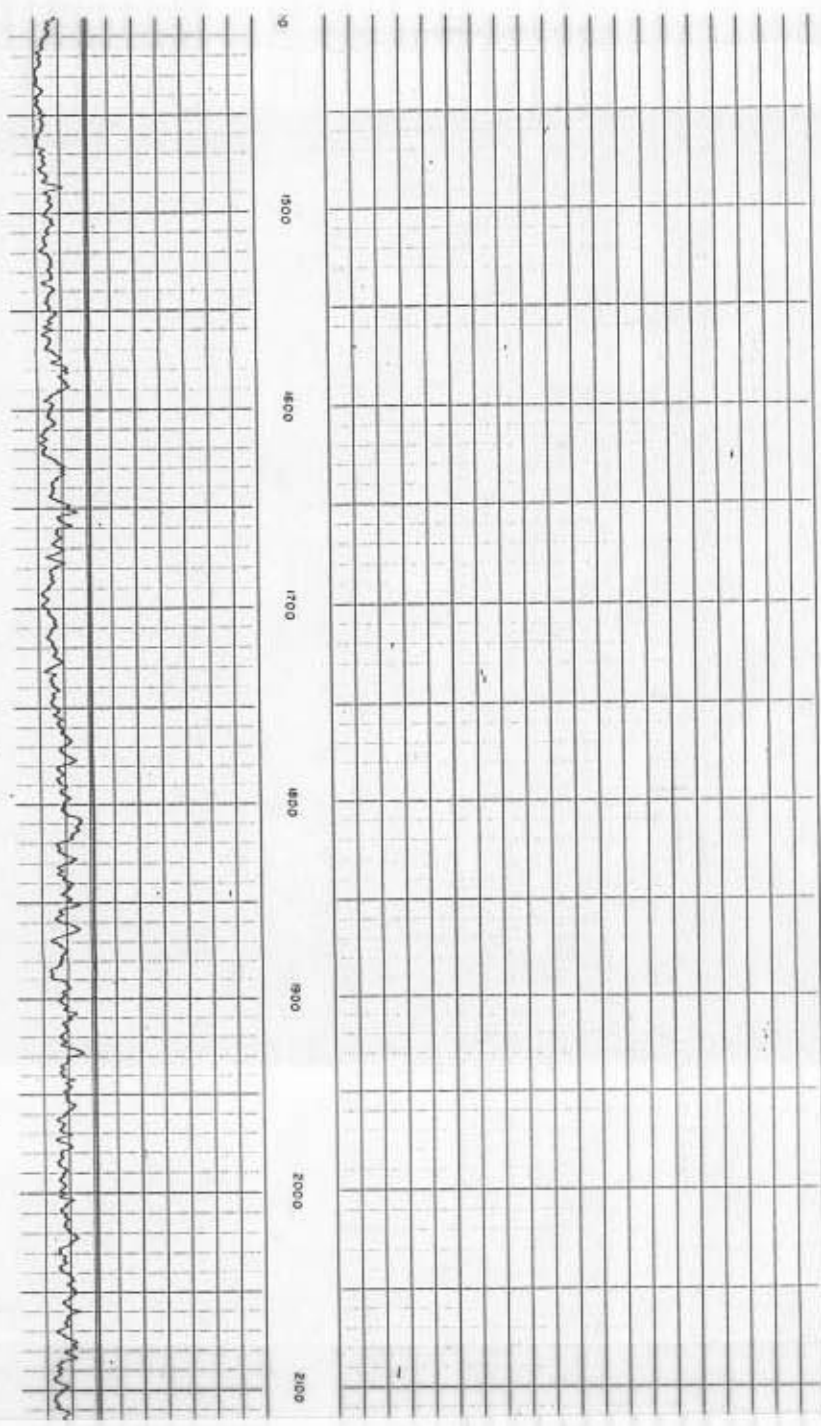
021-144

Permit #799, W-12,994,
Immokalee 4 NW Quad

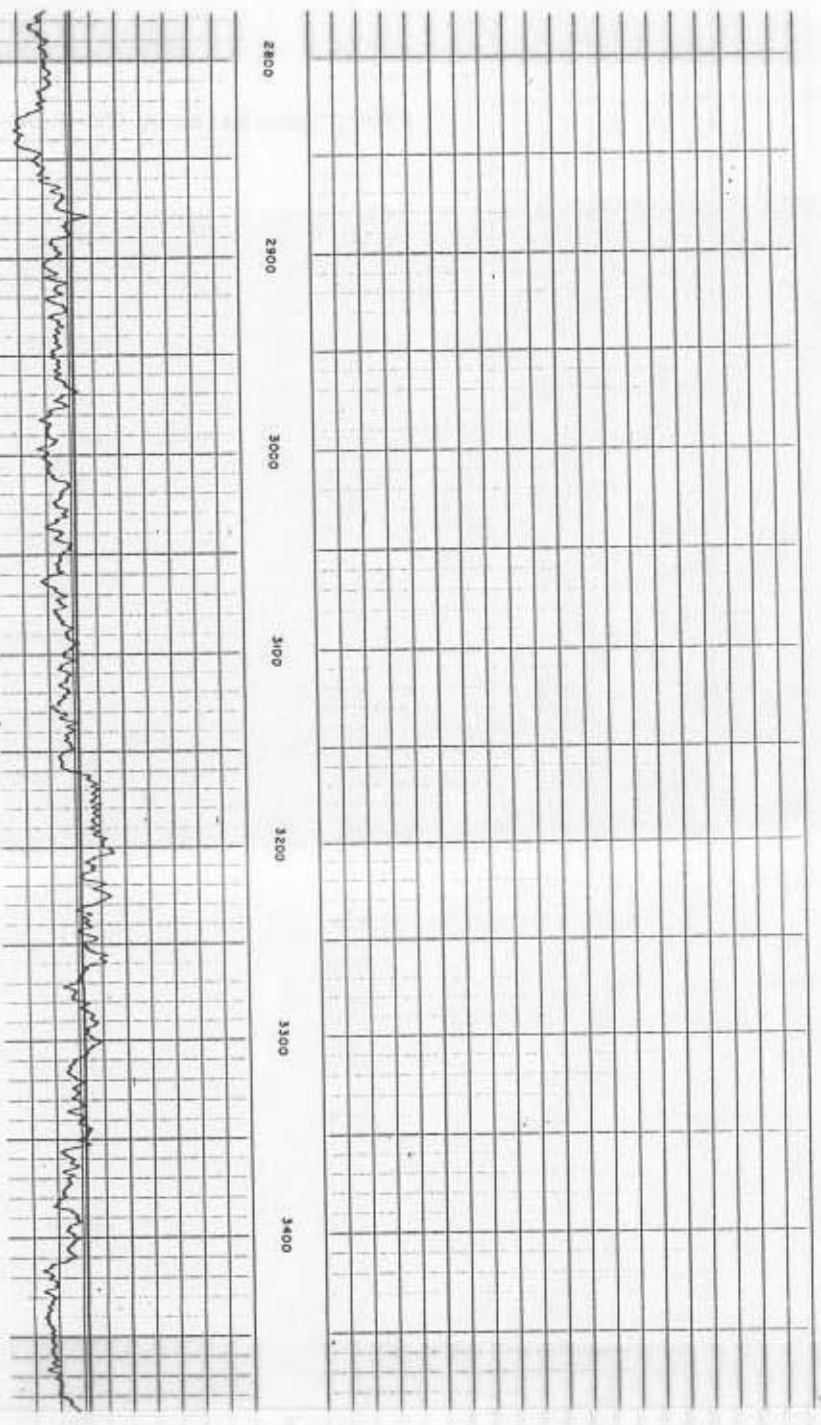
Exxon 34-4 Gerry Bros
1105' FSL, 1081' FEL, sec 34,
T49S R31E, Collier County
GL: 16' DF: 40' TD: 11,880'
Spud: 10/20/75 P&A: 11/24/75

Ferris J. 799
Schumberger
BOREHOLE COMPENSATED
SONIC LOG

COUNTY: COLLIER, FLORIDA FIELD: WILDCAT-HINSON LOCATION: AREA 1 WELL: GERRY BROTHERS # 34-4 COMPANY: EXXON CO. USA		COMPANY: EXXON COMPANY, U.S.A. WELL: GERRY BROTHERS #34-4 FIELD: WILDCAT-HINSON AREA COUNTY: COLLIER STATE FLORIDA	
Finalized Date: 11-21-75 Log Measured From: KB Distance Measured From: KB		GROUND LEVEL: 15.73 Hgt. KA: 10.17 Hgt. KL: 3.71 Hgt. BK: 12.22	
Depth-Start: 11880 Depth-Stop: 11879 Log Interval: 8000 Core Interval: 578 Core Length: 8374 Core Size: 9.7 Core Material: GET-CHEK Date: 11-18-75 Source of Sample: 1304 No. of Main Tools: 262 No. of Main Tools: 196 No. of Main Tools: 276 No. of Main Tools: 11 Log Interval: 8000 Log Interval: 8000 Log Interval: 8000 Log Interval: 8000	RECEIVED Oct - 5 1984 Bureau of Geology		
The well name, location and borehole reference data were furnished by the customer.			
Run No. ONE Service Order No. 97274 Field Level FULL	SCALE CHANGES Type Log _____ Depth _____ Scale Up Hole _____ Scale Down Hole _____		
EQUIPMENT DATA Sonic Panel No. SLP-570 Sonic Case No. SLC Sonic Spindle No. SLS Mem. Panel No. R-288 G.R. Cart No. J-685 G.R. Panel No. A-58 Caliper No. _____ TR No. _____ Control No. _____ Standoff No. _____ Time Const. Sec. _____ Speed - F.P.M. _____		LOGGING DATA Porosity Selection _____ Depth _____ Δt_a Δt_b Cp Scale From To 1 7.6 11.7 27.1 40	
CALIBRATION DATA BK.G. CPS 60 Source CPS 60 Ic Sec. 6		REMARKS Velocity (ft/sec) = Interval (ft) Time (microseconds per foot) 1000/000	
All interpretations are based on information furnished by the customer, and the user assumes the accuracy and completeness of any such information, and we shall not accept in the case of error or -that negligence on our part, be liable in any way for any loss, cost, damage or expense incurred or sustained by anyone resulting from any interpretation made by any of our officers, agents or employees. These interpretations are also subject to Clause 7 of our General Terms and Conditions as set out in our contract file #12345678.			
CALIPER DIAM. IN INCHES 6 16 GAMMA RAY API UNITS 0 100	INTERVAL TRANSIT TIME MICROSECONDS PER FOOT 1.28, 2.4, 4.0 100 70		



#799, Immokalee 4 NW Quad



#799, Immokalee 4 NW Quad

and as such are used in the case of general application on our part, to which we assume no responsibility for any loss, cost, damage or expense incurred or sustained by anyone relying on any interpretation made by any of our officers, agents or employees. These interpretations are also subject to Class 7 of our General Terms and Conditions of Sale as set forth on our part in the present form of the same.

CALIPER DIAM. IN INCHES
5 10 15
0
GAMMA RAY API UNITS 100

INTERVAL TRANSIT TIME MICROSECONDS PER FOOT
1.00 70 40

#799, Immokalee 4 NW Quad



#799, Immokalee 4 NW Quad

#799, Immokalee 4 NW Quad

#799, Immokalee 4 NW Quad

FT: 1200 FT	GR	100
MD in F	GAPI	100
Null Data	IN	16

