

782
Schlumberger X-Y CALIPER

COLLIER COUNTY
FIELD PERPER HAMMOCK
COUNTY COLLIER STATE FLORIDA
317 F.L. 1413 F.L.

COMPANY EXXON COMPANY U.S.A.
WELL COLLIER CORP. 14-3

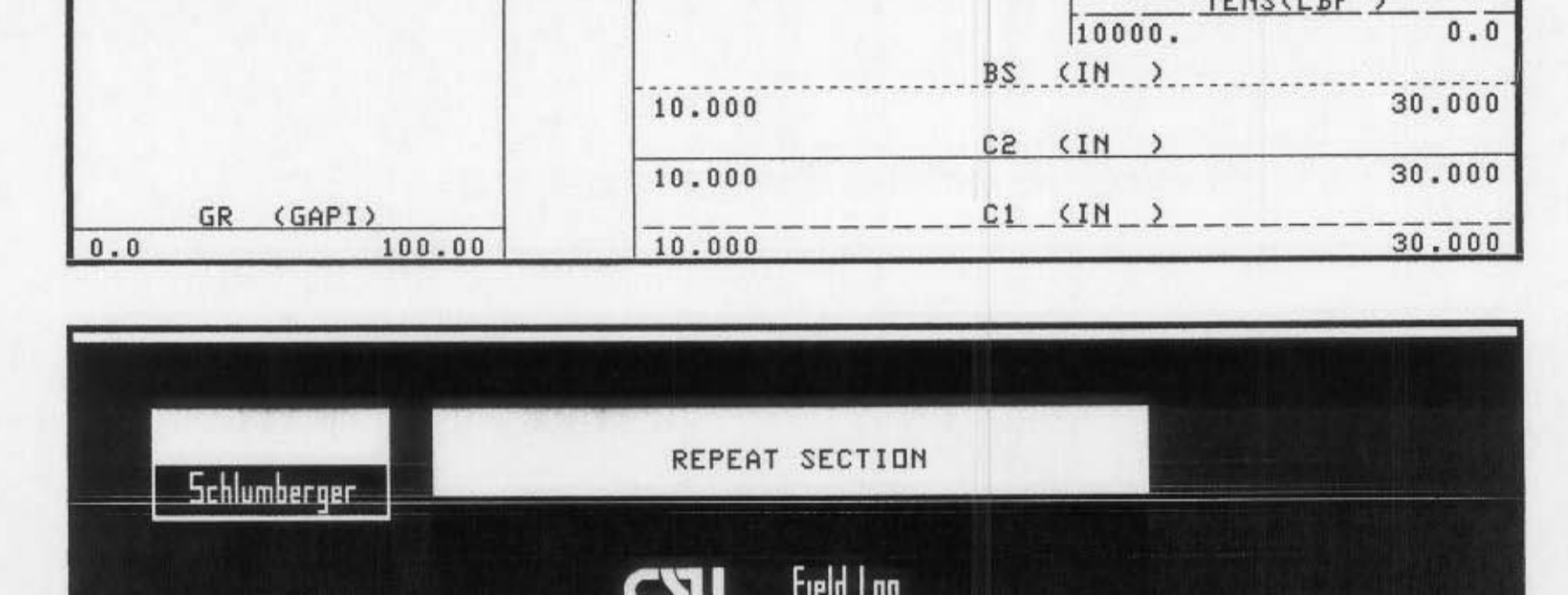
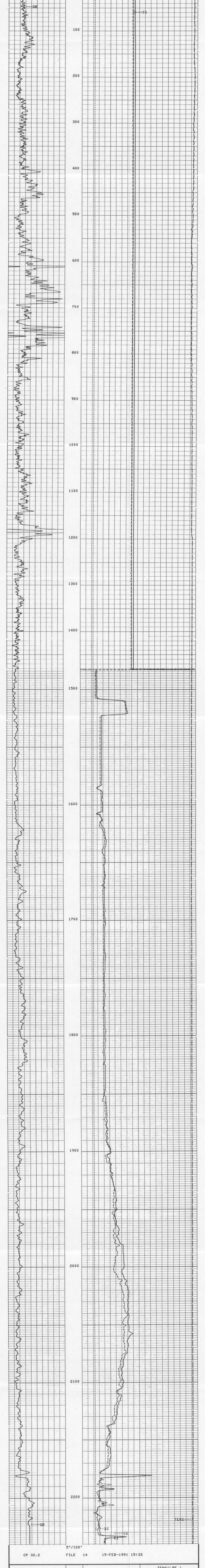
COLLIER CORP. 14-3
EXXON COMPANY U.S.A.

FLORIDA GEOLOGICAL SURVEY
2285 VICTORIA AVENUE, SUITE 170
FT. MYERS, FLORIDA 33901

The well name, location and borehole reference data were furnished by the customer.

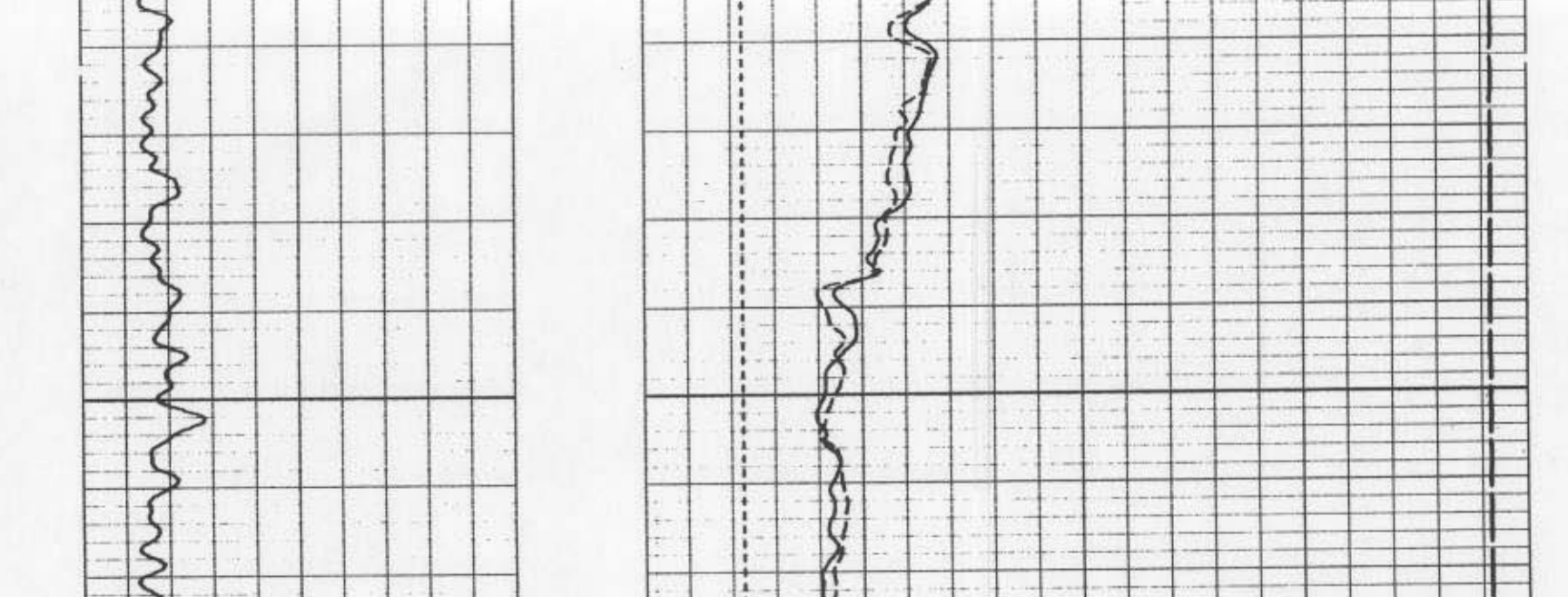
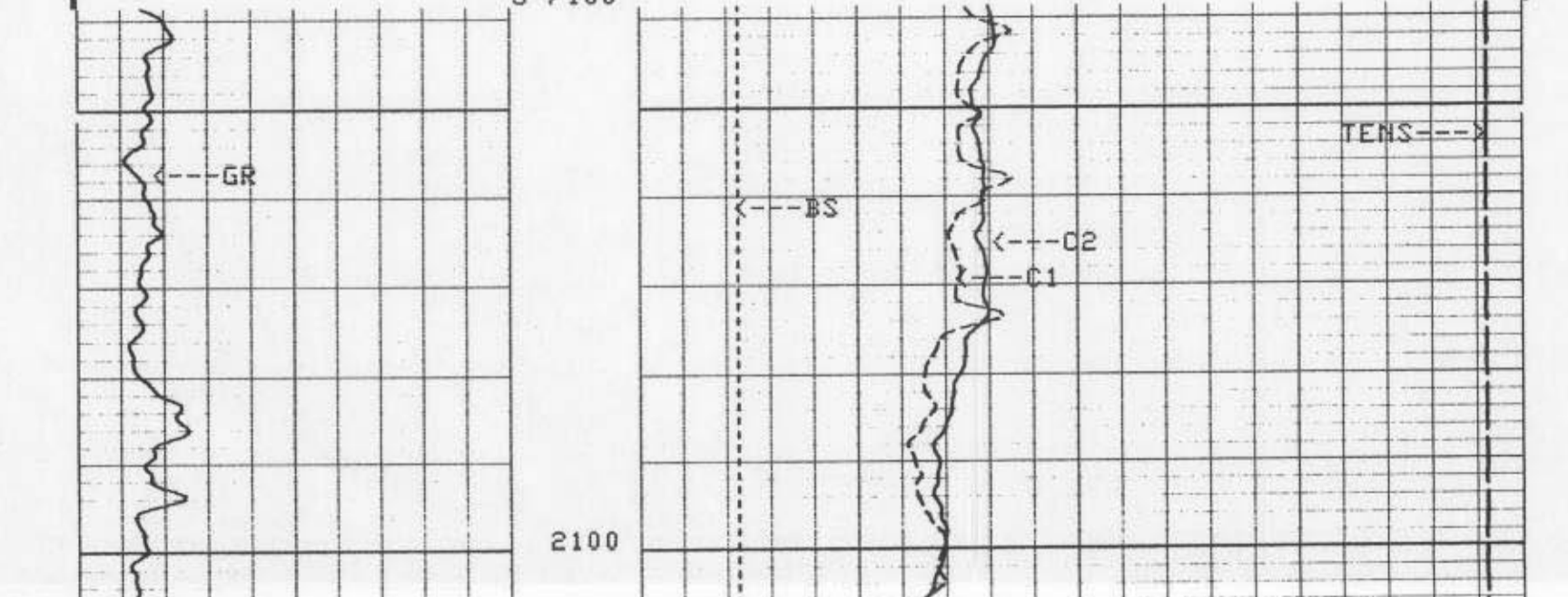
All interpretations are opinions based on inferences from electrical or other measurements and we cannot, and do not guarantee the accuracy or correctness of any interpretations, and we shall not, except in the case of gross or willful negligence on our part, be liable or responsible for any loss, cost, damage or expenses incurred or sustained by anyone resulting from any interpretations made by any of our officers, agents or employees. These interpretations are also subject to Clause 4 of our General Terms and Conditions as set out in our current Price Schedule.

| | |
|----------------------|-----|
| Run No. | ONE |
| Service Order No. | |
| Drilling Field Level | |
| Saltiness | |
| Rim # BHT | 0 |
| Rim # SHY | 0 |
| Logging Speed | |
| EQUIPMENT DATA | |
| Yool Number 1 | |
| Yool Number 2 | |
| Yool Number 3 | |
| Yool Number 4 | |
| Yool Number 5 | |
| Yool Number 6 | |
| Yool Number 7 | |
| Yool Number 8 | |
| Yool Number 9 | |
| Yool Number 10 | |
| Yool Number 11 | |
| Yool Number 12 | |
| REMARKS: | |



REPEAT SECTION

Schlumberger CSI Field Log



BEFORE SURVEY CALIBRATION SUMMARY

PERFORMED: 15-FEB-1991 14:46
PROGRAM FILE: BMS (VERSTIN 32.2 00/00/00 88/11/16)

| CALIPER CALIBRATION SUMMARY | | | | | |
|-----------------------------|----------|------------|-------|-------|----|
| BGT | MEASURED | CALIBRATED | UNITS | | |
| | SMALL | LARGE | SMALL | LARGE | |
| C1 | 14.63 | 19.6 | 16.00 | 23.0 | IN |
| C2 | 14.39 | 19.1 | 16.00 | 23.0 | IN |