

Notes: 1. All well locations shown on this map are based on the original well logs and are not necessarily accurate. 2. The location of a well is shown by a dot and its name is given in the accompanying list. 3. The name of a well is given in the accompanying list. 4. The name of a well is given in the accompanying list. 5. The name of a well is given in the accompanying list.

SCALE 2000
CONSIDER HORIZONTAL FEET
AS SHOWN ON THIS MAP



Legend:
- - - - - Section Boundary
- - - - - Township Boundary
- - - - - Range Boundary
- - - - - Well Location

SUNNILAND, FLA.
1958
GEOLOGICAL SURVEY
UNITED STATES DEPARTMENT OF THE INTERIOR

Well Location Map - Sunniland Quad

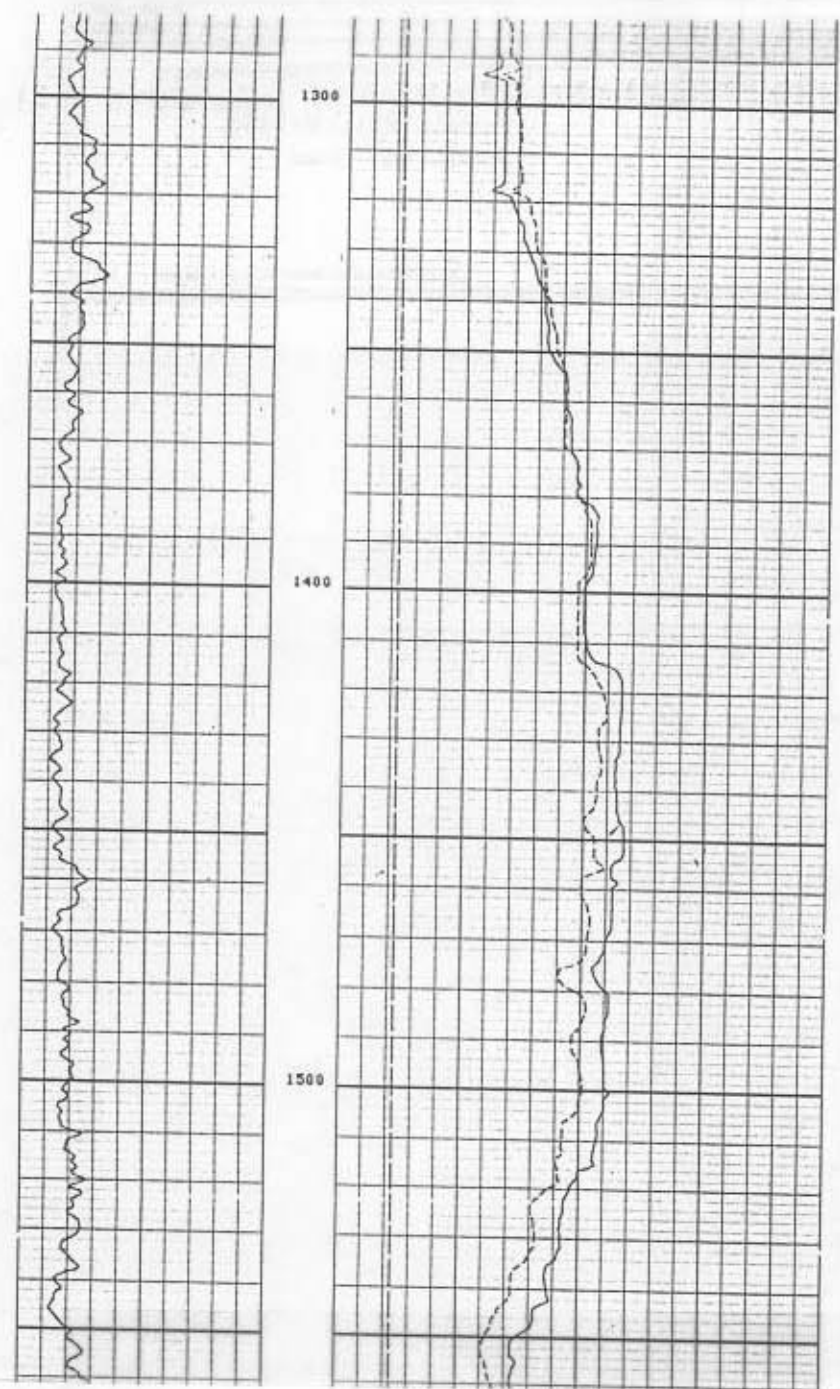
51 Schlumberger X-Y CALIPER LOG

W-1495
 Sunniland Quad
 Permit #51
 H.O.R.C. (Exxon)
 #5 Gulf Coast Realities
 660' FWL, 660' FSL,
 sec 20, T48S R30E
 Sunniland Field
 Collier County
 GL: 17.6' DF: 30.6'
 TD: 11,641'
 Spud: 03/02/87
 P&A: 09/07/88

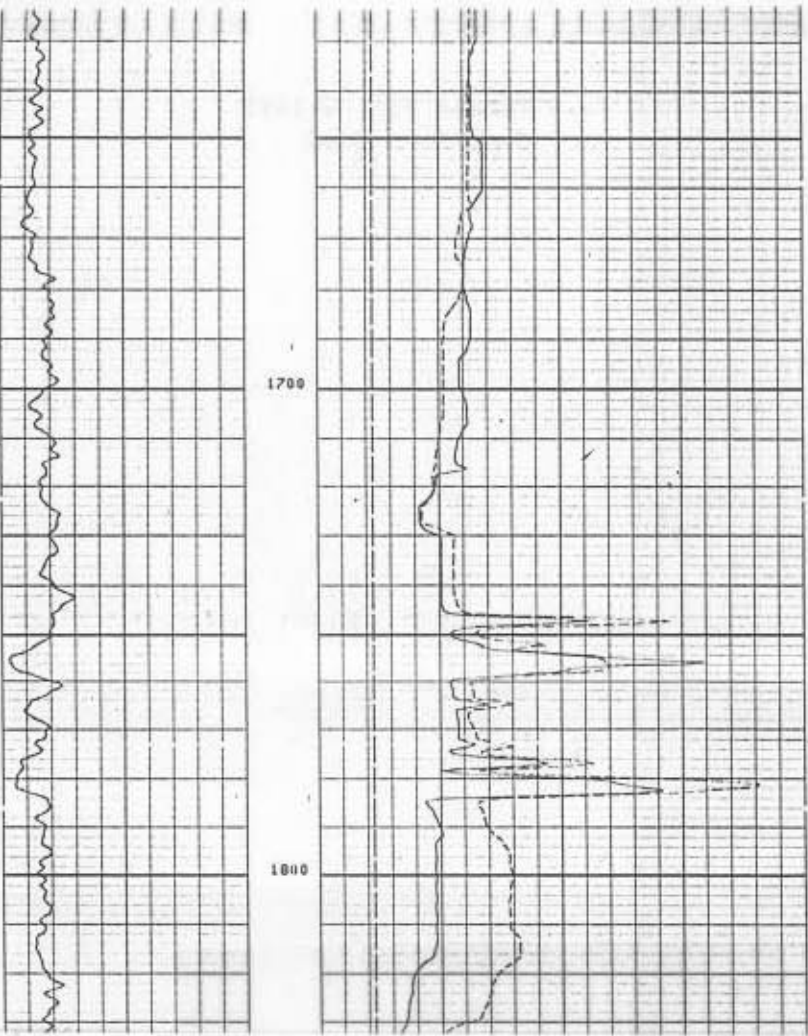
COMPANY: EXXON COMPANY USA. WELL: GORC NO.5 COUNTY: COLLIER STATE: FLORIDA
 FIELD: SUNNILAND COLIER COUNTY: COLLIER STATE: FLORIDA
 LOCATION: 660' FWL 660' FSL
 PERMIT NO.: 51
 LOG MEASURED FROM: HYDRL. ABOVE PERM. DEPTH: 0.7, 30.6, 61.1, 1.1
 LOG MEASURED FROM: HYDRL. ABOVE PERM. DEPTH: 0.7, 30.6, 61.1, 1.1
 LOG MEASURED FROM: HYDRL. ABOVE PERM. DEPTH: 0.7, 30.6, 61.1, 1.1
 LOG MEASURED FROM: HYDRL. ABOVE PERM. DEPTH: 0.7, 30.6, 61.1, 1.1

The well name, location and borehole reference data were furnished by the customer.
 All interpretations are opinions based on inferences from electrical or other measurements and we cannot, and do not guarantee the accuracy or correctness of any interpretations, and we shall not, except in the case of gross or willful negligence on our part, be liable or responsible for any loss, costs, damages or expenses incurred or sustained by anyone resulting from any interpretations made by any of our officers, agents or employees. These interpretations are also subject to Clause 4 of our General Terms and Conditions as set out in our current Price Schedule.

Run No.	ONE
Service Order No.	360767
Drilling Fluid Level	20.0 F
Salinity	50.0 PPM
Run @ BHT	0
Run @ BHT	0
Logging Speed	
EQUIPMENT DATA	
Tool Number 1	BGT 3804 X
Tool Number 2	QR 8318
Tool Number 3	
Tool Number 4	
Tool Number 5	
Tool Number 6	
Tool Number 7	
Tool Number 8	
Tool Number 9	



Permit #51, W-1495
 Sunniland Quad



Permit #51, W-1495
 Sunniland Quad

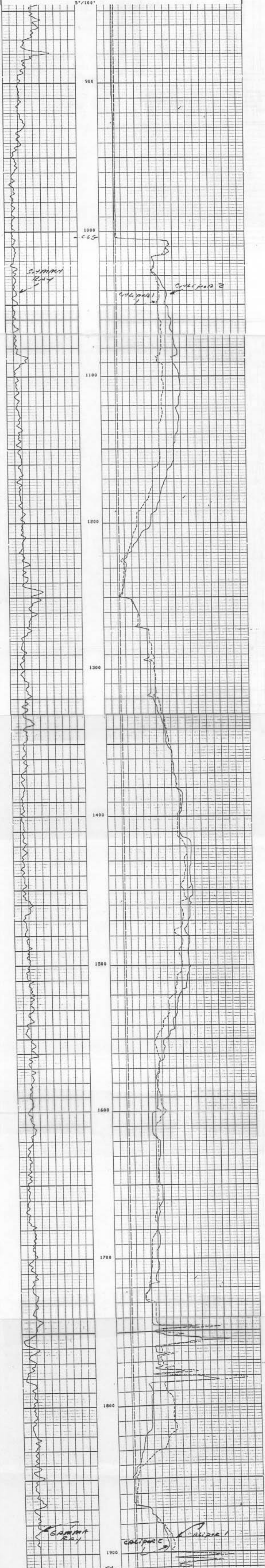
THANK YOU FOR USING SCHLUMBERGER

Permit #51, W-1495
Sunniland Quad

CEMENT VOLUME = 1640.58 F3
HOLE VOLUME = 1640.58 F3
FROM 1910.0 TO 845.0 FEET

GR (GAPI) 0.0 100.00	BS (IM)	30.000
	C2 (IM)	30.000
	C1 (IM)	30.000
	CJ (IM)	30.000

CP 30.22 FILE 3 01-SEP-88 09:44



CP 30.22 FILE 3 01-SEP-88 09:26

GR (GAPI) 0.0 100.00	BS (IM)	30.000
	C2 (IM)	30.000
	C1 (IM)	30.000
	CJ (IM)	30.000

SENSOR MEASURE POINT TO TOOL ZERO

C2 0.0 FEET	GR 16.1 FEET
DEVI 0.0 FEET	C1 0.0 FEET
AZIM 0.0 FEET	RB 0.0 FEET
TENS 0.0 FEET	

PARAMETERS

NAME	VALUE	UNIT	NAME	VALUE	UNIT
BS	12.2500	IN	BMS OPEN		
WMUD	8.0000	LB/G	MCT	72	

