

093-80

P #1264 Triton Oil and Gas #1 Larson 13-2 (continued)

2

<u>Depth</u>	<u>Description</u>
1030-1060	Vpo-grayish orange, granular, part rexal, fos, dol Ls, minor, grayish orange-med gray, micritic Ls, fossils as above, a few <u>Fabularia vaughani</u> .
1060-1120	Vpo-grayish orange, part rexal, granular, fos, sl dol Ls, common miliolids and rexal cones.
1120-1150	Ls and fossils as above, minor clear to dark yellowish brown, fg xln Dol; rare <u>Dictyoconus americanus</u> .
1150-1180	Vpo-v lt gray, granular, sl silty, part rexal, fos, dol Ls, minor <u>Lepidocyclina</u> , <u>Fabularia vaughani</u> , <u>Dictyoconus americanus</u> and minor clear-dk yel brn, fg xln Dol.
1180-1210	Grayish orange, fg xln, sl vuggy Dol, some as aggregates of rhombs, minor vpo, chalky, granular-micritic, part rexal, sl dol Ls and <u>Lepidocyclina</u> .
Lost circulation at 1210'.	
1238-1240	Loose, colorless, v crse, subang-subrnd Qz sand, 5% phos grs, LCM and cement.
1240-1270	Grayish orange, vfg-fg xln Dol, Qz sand, gray rexal mollusk frags, 1% phos grs, minor calc Ss, cement and LCM.
1270-1360	Grayish orange, vfg xln Dol, LCM and cement.
1360-1780	No returns - lost circulation.
1780-1840	Grayish orange, vfg-fg, sl vuggy Dol, some as aggregates of rhombs and cement.
1840-1960	Dol as above; most is vfg xln, some pieces of sample are vuggy, fg xln aggregates of rhombs.
1960-2080	Vpo-grayish orange, vfg-fg xln Dol/Anhy, some Dol as vuggy aggregates of rhombs.
2080-2110	As above and cement. (Partial returns)
2110-3400	No returns - lost circulation.
3400-4100	Not logged.

08-270

9

#1264 Triton Oil and Gas #1 Larson 13-2  
1340' FNL, 1046' FWL, Sec. 13, T35S R32E  
Okeechobee County (Basinger Quad)  
GL 53', DF 74', Spud 8/9/90, P & A 9/18/90

Brief lith log of washed cuttings by C.V. Cook 2/95[FGS, Ft Myers Oil/Gas Field office]

<u>Depth</u>	<u>Description</u>
0-250	No samples.
250-280	Loose, colorless, subang-subrnd, v crse Qz sand, med-v lt gray, rexal mollusk frags, 3% phos grs, minor yellowish gray, silty, calc Ss and cement.
280-310	As above; 5% phos grs and fossils.
310-340	As above; med-lt gray-white mollusk frags.
340-370	Vpo, vfg, sucrosic Dol w/1-10% phos grs, 15% Qz sand as above, 20% phos grs, grns and fossils and cement.
370-400	Largely wh-med gray, rexal mollusk frags, 30% phos grs, grns and fossils, 10% Qz sand, 5% wh-lt gray, silty, vfg, sucrosic Dol w/1-5% phos grs, trace bryozoan and cement.
400-430	Wh, silty, dol Ls, some vfg xln; 5% phos grs, grns and fossils; trace of med Qz sand.
430-460	Sandy wh Ls as above, 10% yellowish gray, vfg xln Dol w/1% phos grs, 5% Qz sand and 5% phos grs and fossils.
460-520	Wh, silty, fos, sl dol Ls, common <u>Lepidocyclina</u> , minor <u>Camerina</u> , mollusk frags and 1% phos grs.
520-550	As above; minor lt gray, vfg xln Dol.
550-610	Abundant <u>Lepidocyclina</u> and <u>Camerina</u> , common mollusk frags, rare lt gray, vfg xln Dol and 1% phos grs.
610-760	Wh, chalky, part rexal, fos Ls, common <u>Lepidocyclina</u> and <u>Camerina</u> , minor <u>Dictyoconus cookei</u> (?) and 1% phos grs.
760-910	Wh-vpo, silty, granular, part rexal, fos, dol Ls, common <u>D. cookei</u> and rare brown carbonaceous matter.
910-970	Vpo, silty, part rexal, granular, fos, dol Ls, common <u>Cribrobulimina cushmani</u> , <u>Coskinolina elongata</u> (?) and minor brn carb matter.
970-1030	Vpo, largely rexal, granular, very fos, dol Ls, common miliolids and <u>Cribrobulimina cushmani</u> .

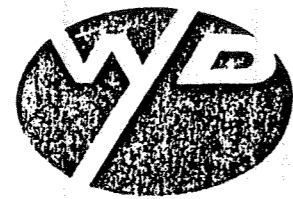
Permit # 1264

Cuttings in FCS, Cuttings Library in Tallahassee e W-16,579

Permit # 1264

093-80

FM



P.O. BOX 867  
MILTON, FL. 32570  
(904) 623-8917



**CONFIDENTIAL**

COMPANY TRITON OIL & GAS CORP.  
WELL #1 L. E. LARSON 13-2  
FIELD WILDCAT (BASINGER PROSPECT)  
LOC. SEC 13 TN 35S RG 32E  
COUNTY OKEECHOBEE STATE FLORIDA  
DATE BEGAN LOGGING 8-12-90 DATE ENDED 9-15-90  
ELEVATION G L \_\_\_\_\_ PRODUCER: OIL  
DF \_\_\_\_\_ GAS  
KB 74.0 FEET SPUD DATE 8-9-90

- SAMPLE SYMBOLS:
- SAND
  - SHALE
  - LIME
  - DOLOMITE
  - ANHYDRITE
  - CHERT
  - IGNEOUS
  - SALT
  - COAL OR LIGNITE
  - CHALK

TYPE MUD: WATER/LSND  
LOGGED INTERVAL  
DEPTH:  
FROM 250 FEET  
TO 8,185 FEET  
T. D. 8,185 FEET  
SCALE: 1 INCH = 100 FEET

**Well-Data, Inc.**  
Daily Log Report

COMPANY TRITON OIL & GAS CORP.  
WELL #1 L. E. LARSON 13-2  
COUNTY OKEECHOBEE STATE FL.  
SEC. 13 TN. 35S R. 32E  
DATE 8-12-90

SUPERVISOR \_\_\_\_\_  
UNIT \_\_\_\_\_ AD \_\_\_\_\_  
SAND \_\_\_\_\_  
SHALE \_\_\_\_\_  
LIME \_\_\_\_\_

SHOW VALUE SIGNIFICANCE  
2-VERY POOR SHOW  
5-FAIR SHOW, PROB. NOT PRODUCTIVE  
10-GOOD SHOW, POSSIBLY PRODUCTIVE  
15-GOOD SHOW PROBABLY PRODUCTIVE  
20-VERY GOOD SHOW, PRODUCTIVE

**Well-Data, Inc.**  
MUD RECORD  
BIT & TRIP RECORD  
DATE  
CO RECORD  
DRILLING RATE MIN/FT \_\_\_\_\_  
F/HR \_\_\_\_\_

LITHOLOGY  
% IN SAMPLES  
75 25 25

SHOW VALUES  
OIL  
GAS

DEPTH AND CORE RECORD  
5 10 15 20 40 60 80

GAS IN DRILLING MUD  
--- BUTANES ----- .05% PER. DIV.  
--- PROPANE ----- .05% PER. DIV.  
--- ETHANE ----- .1% PER. DIV.  
--- METHANE ----- .5% PER. DIV.  
--- TOTAL GAS -----

LITHOLOGY

PUMP #1 & #2 6 1/2 X 9 1/2  
TRIPLEX OUTPUT .077 bbls/stk @ 95% Eff.

SAND clr frst cse med f vfg  
gr sbrnd sbang unconcs

SHALE DK GRY frm sli dolo  
v dolo tr pyr smooth tex

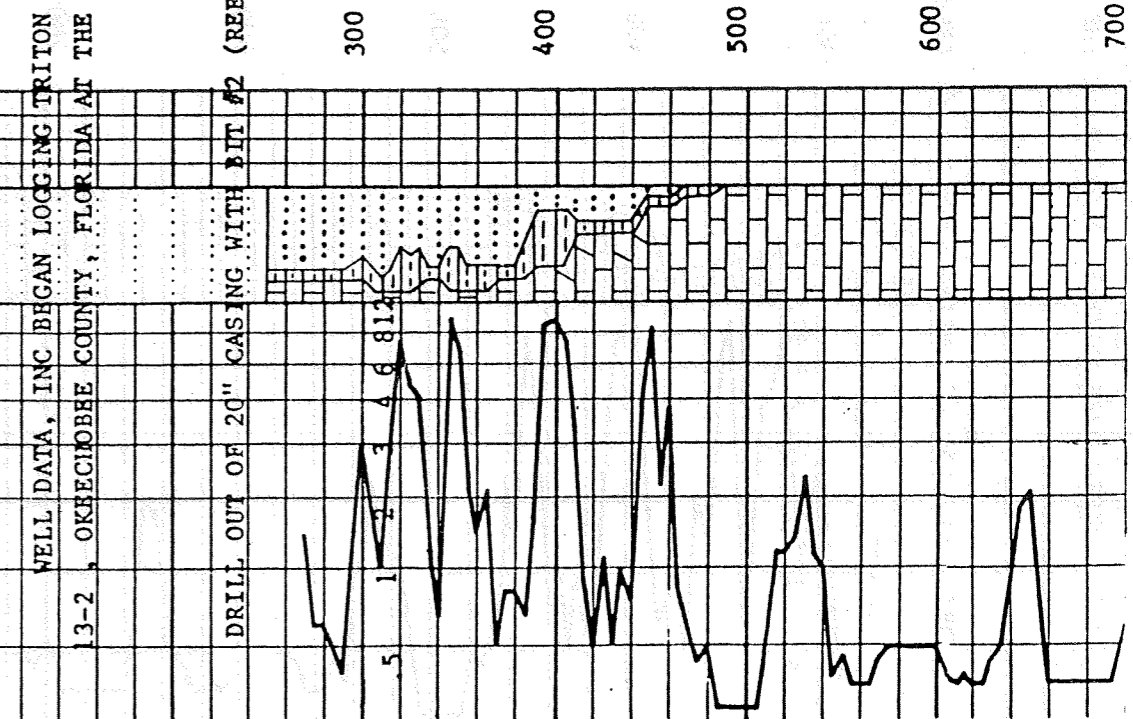
DOLOMITE dk brn dk gry-brn  
dms v frm pt lmy

LIME cream wh chly foss  
min flo no cut

LIME cream wh chly foss  
min flo no cut

LIME buff frm gran foss  
min flo no cut

DEPTH AND CORE RECORD	TRITON OIL & GAS #1 L. E. LARSON	DRILLER'S DEPTH OF 250 FEET.
5		
10		
15		
20		
40		
60		
80		
WT 8.94		
VIS B6		
PH 9.5		
FILT 27.2		
CL 400		
CAL 40		
RPM 80		
WOB D/25		
PP 200		
SEM 80		



GR 0 100

TRIPLEX OUTPUT .077 bbl  
stk @ 95% Eff.

WELL DRILLING LOGGING DIVISION  
DALLAS, TEXAS

13-2, OKRECHOBHE COUNTY, FLORIDA AT THE  
DRILLER'S DEPTH OF 250 FEET.

DRILL OUT OF 20" CASING WITH BIT #2 (REED Y11J)  
SURVEY D @ 250"

SAND clr frst cse med f  
gr sbrnd sbang unconcs

SHALE DK GRY frm sll dolc  
v dolo tr pyr smooth tex

DOLOMITE dk brn dk gry-b  
dns v frm pt lmy

LIME cream wh chlky foss  
min flo no cut

LIME cream wh chlky foss  
min flo no cut

LIME buff frm gran foss  
min flo no cut

LIME buff frm gran foss  
min flo no cut

LIME buff frm gran foss  
pt sll anhy tr calcite  
tr qtz min flo no cut

LIME buff frm gran foss  
pt sll anhy tr calcite  
tr qtz min flo no cut

WT 8.9+

VIS 36

PH 9.5

FILT 27.2

CL 400

CAL 40

RPM 80

WOB D/25

PH 200

SFM 80

8-13-90

SURVEY 1 @ 776

WT 8.9+

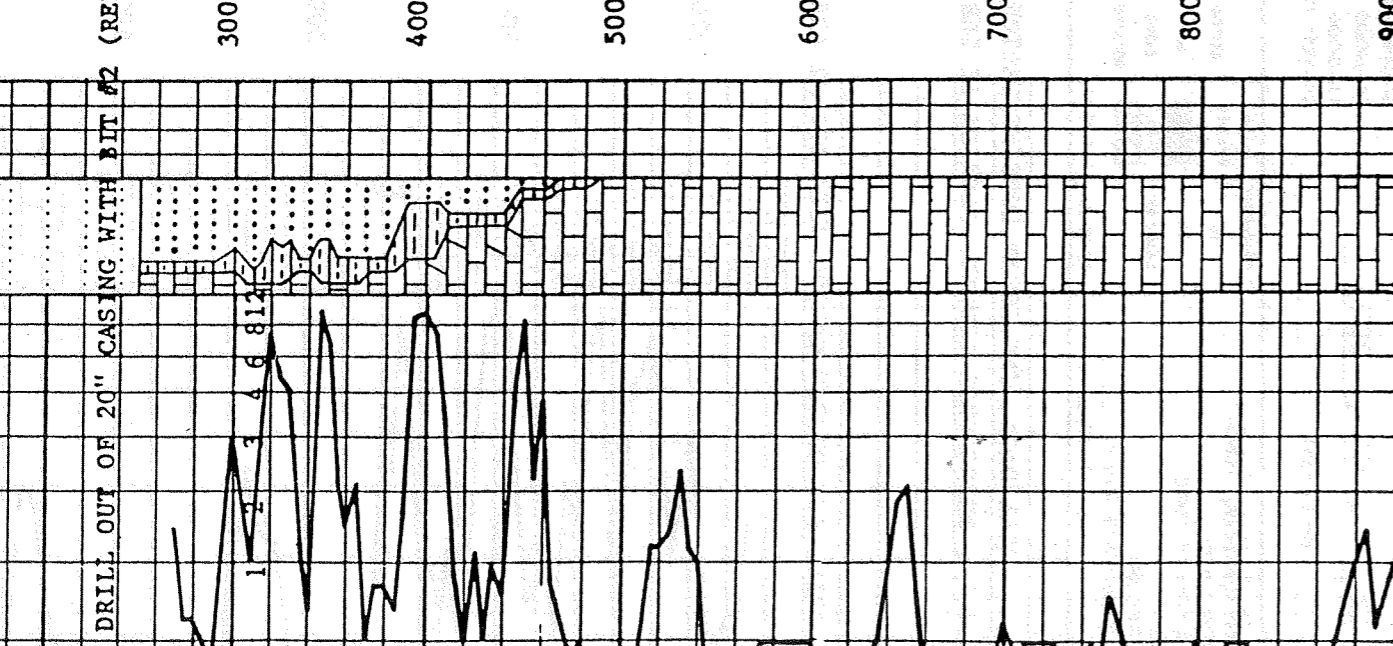
VIS 36

FILT 27.2

PH 9.5

CL 400

CAL 40



DRILL OUT OF 20" CASING WITH BIT #2 (REED Y11J)  
SURVEY D @ 250"

WT 8.9+

VIS 36

PH 9.5

FILT 27.2

CL 400

CAL 40

RPM 80

WOB D/25

PH 200

SFM 80

8-13-90

SURVEY 1 @ 776

WT 8.9+

VIS 36

FILT 27.2

PH 9.5

CL 400

CAL 40

AS ABOVE

DOLOMITE lt brn v fnly g  
sucr xln pt sll lmy  
w/brife min flo no cut

DOLOMITE fan fnly gran  
sucr xln min flo no cut

RPM 80

WOB 10/15

PP 800 SPM 110

WT 8.9+

VIS 36

FILT 27.2

PH 9.5

CL 400

CAL 40

RPM 80/100

WOB D/20

PH 200

SFM B3

SURVEY 1/2 @ 1238'

LOST CIRCULATION @ 1238 ft  
on 8-13-90 @ 1000 hrs.

STUCK PIPE @ 1238 ft 8-16-90

SET 16" CASING @ 1172 ft

DRILL OUT W/ 1 1/4 3/4" BIT  
ON 8-22-90

WT 9.0

VIS 47

FILT 16.0

PH 9.0

CL 300

CAL 100

8-23-90

WT 8.3+

VIS 27

CL 250

CAL 100

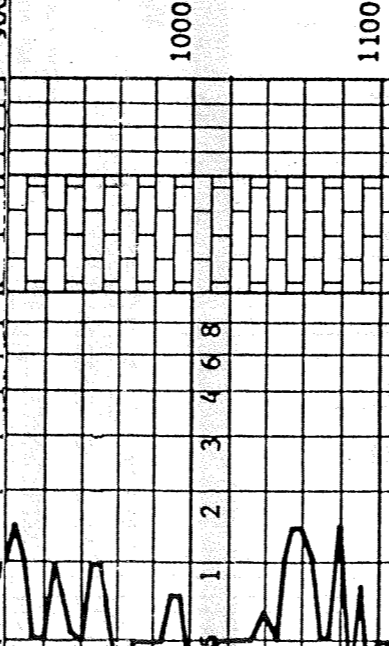
CLEAR WATER

RPM 40/100

WOB 15/100

PP 2400

SFM 100



DRILLED TO 1780 FT. SET 13 3/8" CASING @ 1752 FT. DRILL OUT WITH 1 1/4" BIT ON 8-29-90

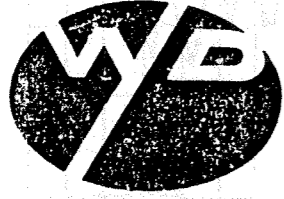
BIT #5 HTC ATJ-44

SP (MV) 2 40.000

IR (GAPI) 100.00

Permit # 1264

FM



P.O. BOX 867  
MILTON, FL. 32570  
(904) 623-8917



CONFIDENTIAL

COMPANY TRITON OIL & GAS CORP.  
WELL #1 L. E. LARSON 13-2  
FIELD WILDCAT (BASINGER PROSPECT)  
LOC. SEC 13 TN 35S RG 32E  
COUNTY OKEECHOBEE STATE FLORIDA  
DATE BEGAN LOGGING 8-12-90 DATE ENDED 9-15-90  
ELEVATION G L \_\_\_\_\_ PRODUCER: \_\_\_\_\_ OIL  
DF \_\_\_\_\_ GAS  
KB 74.0 FEET SPUD DATE 8-9-90

SAMPLE SYMBOLS:

- SAND
- SHALE
- LIME
- DOLOMITE
- ANHYDRITE
- CHERT
- IGNEOUS
- SALT
- COAL OR LIGNITE
- CHALK

LOGGED INTERVAL  
DEPTH  
FROM 250 FEET  
TO 8,185 FEET  
T. D. 8,185 FEET  
SCALE: 1 INCH = 100 FEET

Well-Data, Inc.  
Daily Log Report

COMPANY TRITON OIL & GAS CORP.  
WELL #1 L. E. LARSON 13-2  
COUNTY OKEECHOBEE STATE FL.  
SEC. 13 TN. 35S R. 32E  
DATE 8-12-90

SUPERVISOR \_\_\_\_\_

UNIT SAND PH. --- AD. ---  
SHALE --- ---  
LIME --- ---

SHOW VALUE SIGNIFICANCE  
2--VERY POOR SHOW  
5--FAIR SHOW, PROB. NOT PRODUCTIVE  
10--GOOD SHOW, POSSIBLY PRODUCTIVE  
15--GOOD SHOW, PROBABLY PRODUCTIVE  
20--VERY GOOD SHOW, PRODUCTIVE

Well-Data, Inc.

MUD RECORD  
BIT & TRIP RECORD  
DATE  
C/O RECORD  
DRILLING RATE MIN./FT  
FT/HR

LITHOLOGY  
%  
IN  
SAMPLES

SHOW VALUES  
OIL  
GAS  
RECORD

DEPTH  
AND  
CORE  
RECORD

GAS IN DRILLING MUD  
BUTANES --- 0.25% PER. DIV.  
PROpane --- 0.5% PER. DIV.  
ETHANE ..... 1% PER. DIV.  
METHANE ..... 5% PER. DIV.  
TOTAL GAS

LITHOLOGY

PUMP #1 & #2 6 1/2 X 9 1/4  
TRIPLEX OUTPUT .077 bbls/  
stk @ 95% Eff.

SAND clr frst cse med f vf  
gr sbrnd sbang unconcs

SHALE DK GRY frm sll dolo  
v dolo tr pyr smooth tex

DOLOMITE dk brn dk gry-brn  
dns v frm pt lmy

LIME cream wh chly foss  
min flo no cut

LIME cream wh chly foss  
min flo no cut

LIME buff frm gran foss  
min flo no cut

LIME buff frm gran foss  
min flo no cut

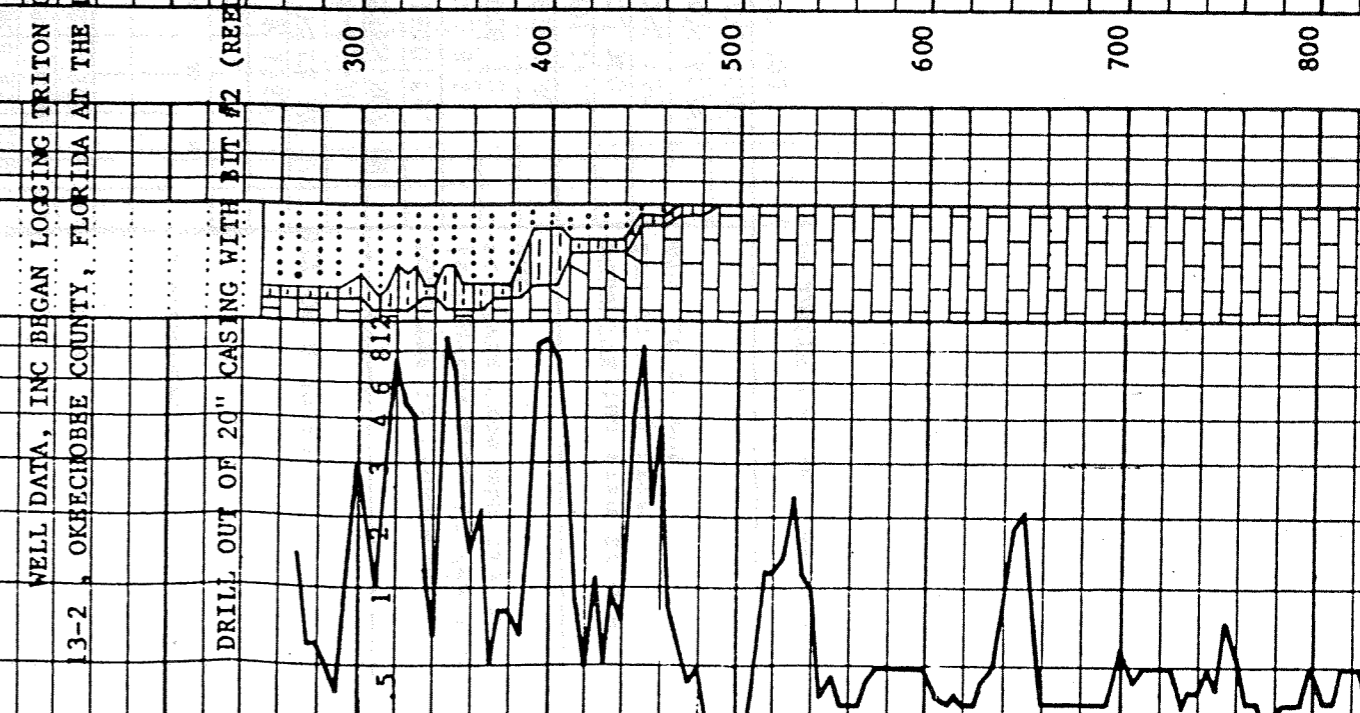
LIME buff frm gran foss  
min flo no cut

OIL & GAS #1 L. E. LARSON  
DRILLER'S DEPTH OF 250 FEET.

SURVEY D @ 250'

WT 8.9+  
VIS 36  
PH 9.5  
FILT 27.2  
CT 400  
CAL 40  
RPM 80  
WOB D/25  
PF 200  
SPM 80

R-13-90  
SURVEY 1 @ 776  
WT 8.9+  
VIS 36  
FILT 27.2





LIME buff frm gran foss  
min flo no cut

LIME buff frm gran foss  
min flo no cut

LIME buff frm gran foss  
pt sll anhy tr calcite  
tr qtz min flo no cut

LIME buff frm gran foss  
pt sll anhy tr calcite  
tr qtz min flo no cut

AS ABOVE

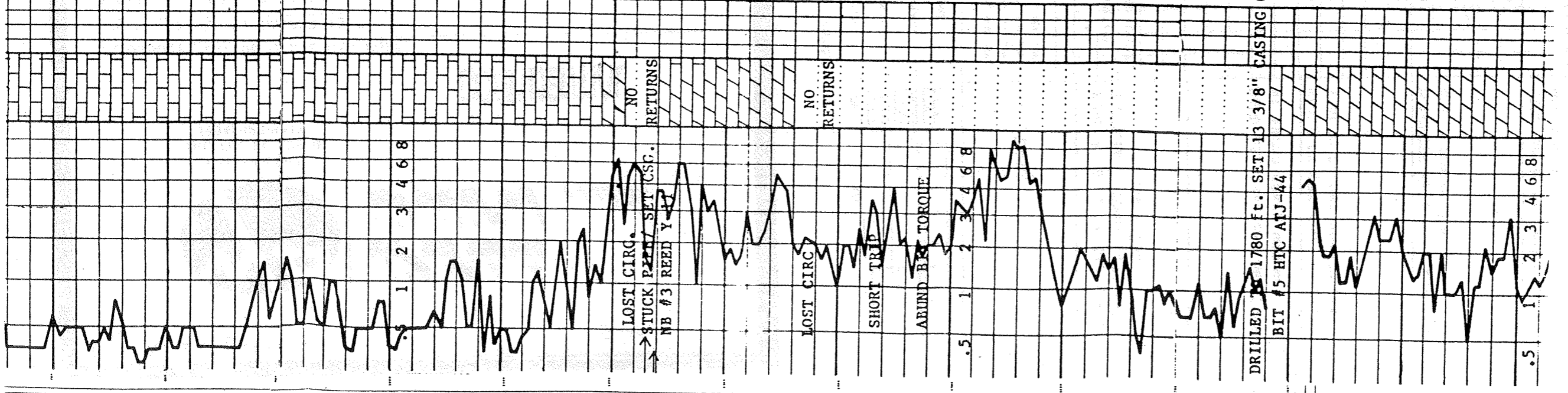
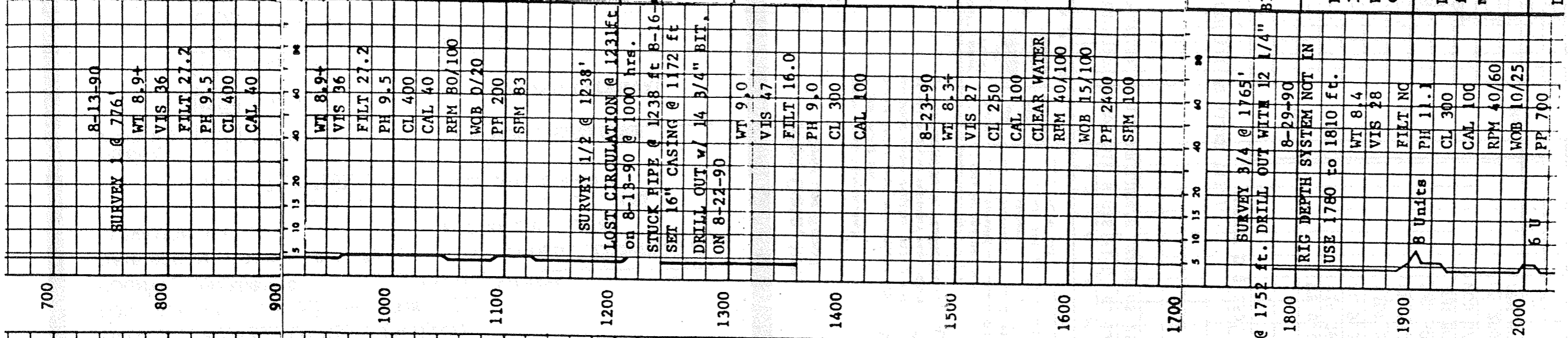
DOLOMITE lt brn v fny gran  
sucr xln pt sll lmy  
w/brite min flo no cut

DOLOMITE fan fny gran  
sucr xln min flo no cut  
RPM 80  
WOB 10/15  
PP 800 SPM 110

DOLOMITE lt brn-amber  
lt brn-tan gran tr dns frm  
pt w/vug pros min flo no  
cut

DOLOMITE tan gran tr dns  
frm pt w/vug pros  
min flo no cut

DOLOMITE tan gran pt dns





Perm # 1264 FM



**VYP**  
**WELL LOG**

P.O. BOX 887  
 MILTON, FL. 32570  
 (904) 623-8917

093-80

**CONFIDENTIAL**

COMPANY TRITON OIL & GAS CORP.  
 WELL #1 L. E. LARSON 13-2  
 FIELD MIDCAT (RASINGER PROSPECT)  
 LOC SEC 13 TN 35S RG 32E  
 COUNTY OKEECHOBEE STATE FLORIDA  
 DATE BEGAN LOGGING 8-12-90 DATE ENDED 9-15-90  
 ELEVATION G1 PRODUCER OIL  
 DF SPUD DATE 8-9-90  
 KB 74.0 FEET GAS

SAMPLE SYMBOLS  
 SAND  
 SHALE  
 LIME  
 DOLOMITE  
 ANHYDRITE  
 CHERT  
 IGNEOUS  
 SALT  
 COAL OR LIGNITE  
 CHALK

DEPTH  
 FROM 250 FEET  
 TO 8,185 FEET  
 T. D. 8,185 FEET  
 SCALE: 1 INCH = 100 FEET

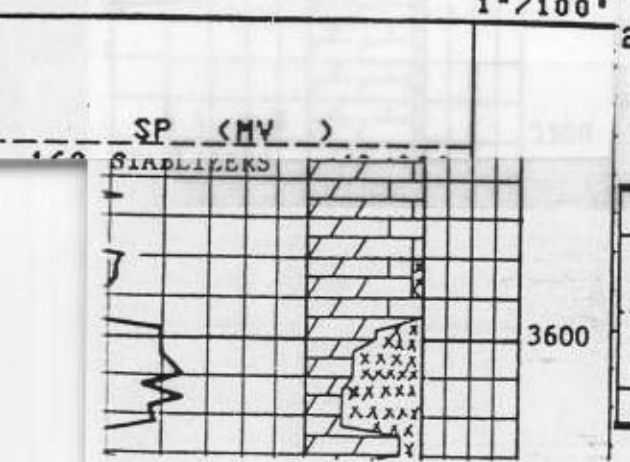
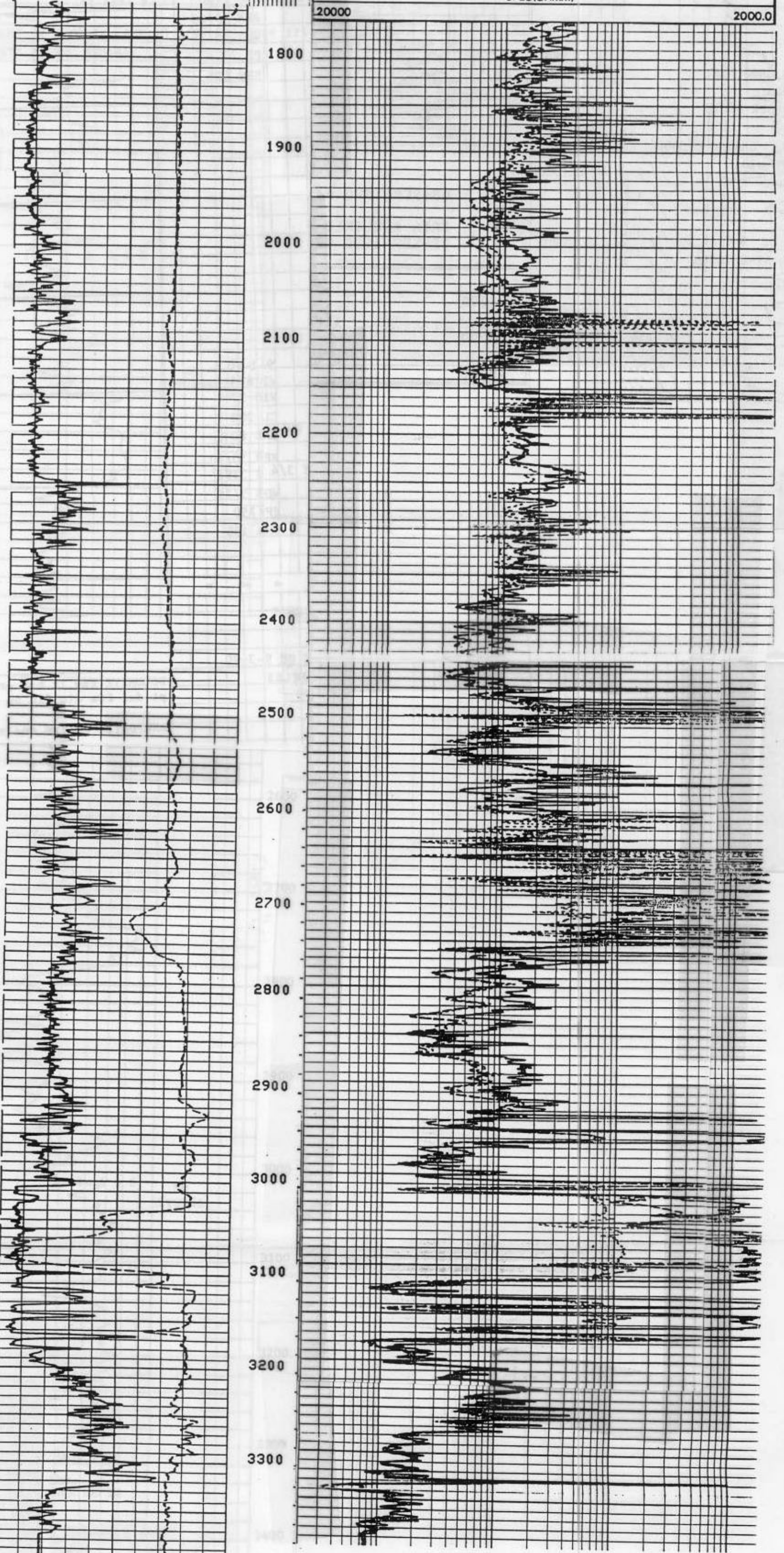
Oil-Data, Inc.

SUPERVISOR JOHN L. RUSTIN

UNIT PH AD  
 SAND  
 SHALE  
 LIME

SP (MV) 40.000  
 -160.0  
 GR (GAPI) 100.0  
 0.0

ILD(OHMM) 20000 2000.0  
 ILM(OHMM) 20000 2000.0  
 SFLU(OHMM) 20000 2000.0



24 02-SEP-1990 04:54  
 DATA ACQUIRED  
 02-SEP-1990 02:03  
 ILD(OHMM) 20000 2000.0  
 ILM(OHMM) 20000 2000.0  
 SFLU(OHMM) 20000 2000.0



# DIGITAL FORMATION

Digital Formation, Inc.

Denver, CO (USA)

RIS-View Version 2.7.5725

N/A

Copyright © 1992-99 Digital Formation, Inc. All Rights Reserved

File Name: D:\...pdf\p1264.npd

Well Name: #11 E. LARSON 13-2

Date: Thursday, November 16, 2000, at 07:26:13 AM

Plot: Plot created from: p1264.npd

This software is protected by United States and International Copyright laws. It may not be duplicated, modified, reverse engineered or decompiled in any way. Digital Formation, Inc. cannot and does not assume any liability for the use of the software for any purpose. All Rights Reserved.

