

Palm Beach County Southern Regional
Class I Injection Facility No. 63

ENGINEERING REPORT

DRILLING AND TESTING OF THE DEEP INJECTION AND MONITOR WELLS AT THE PALM BEACH COUNTY SOUTHERN REGION WASTEWATER TREATMENT PLANT

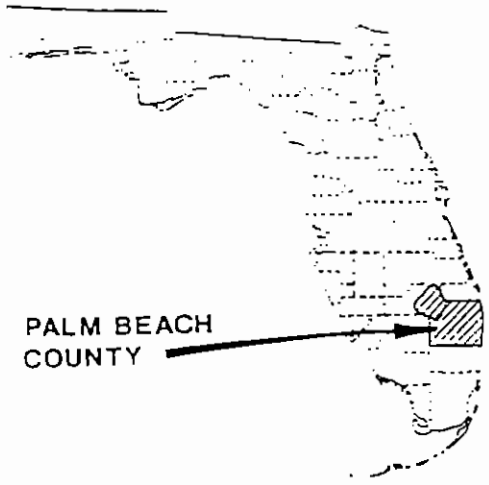
Prepared for:

**The Palm Beach County
Water Utilities Department**

Prepared by:

CH2M HILL
800 Fairway Drive, Suite 350
Deerfield Beach, Florida 33441

May 1991
SEF24770.T0



NOT TO SCALE

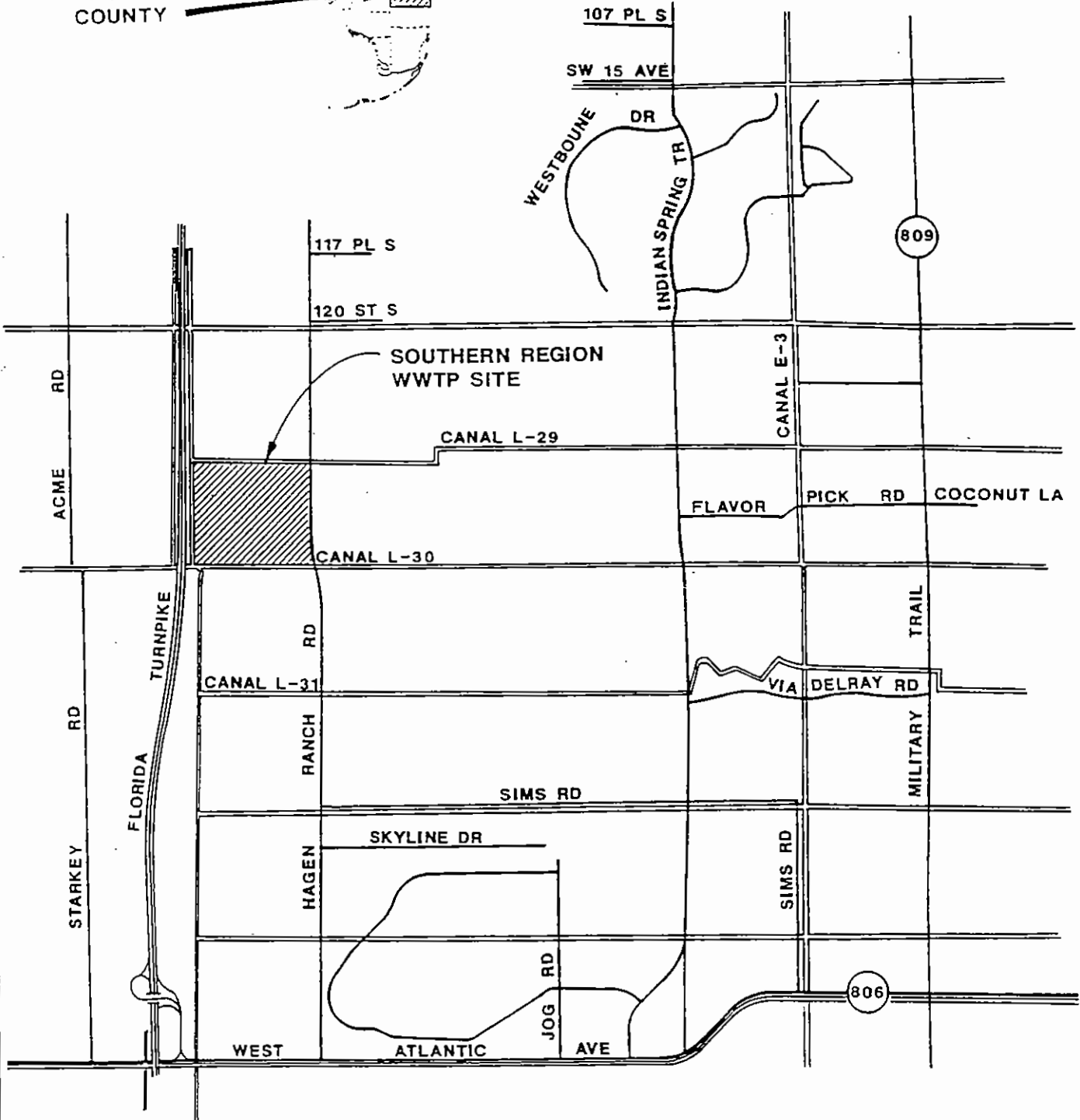


FIGURE 1-1

Project Location Map

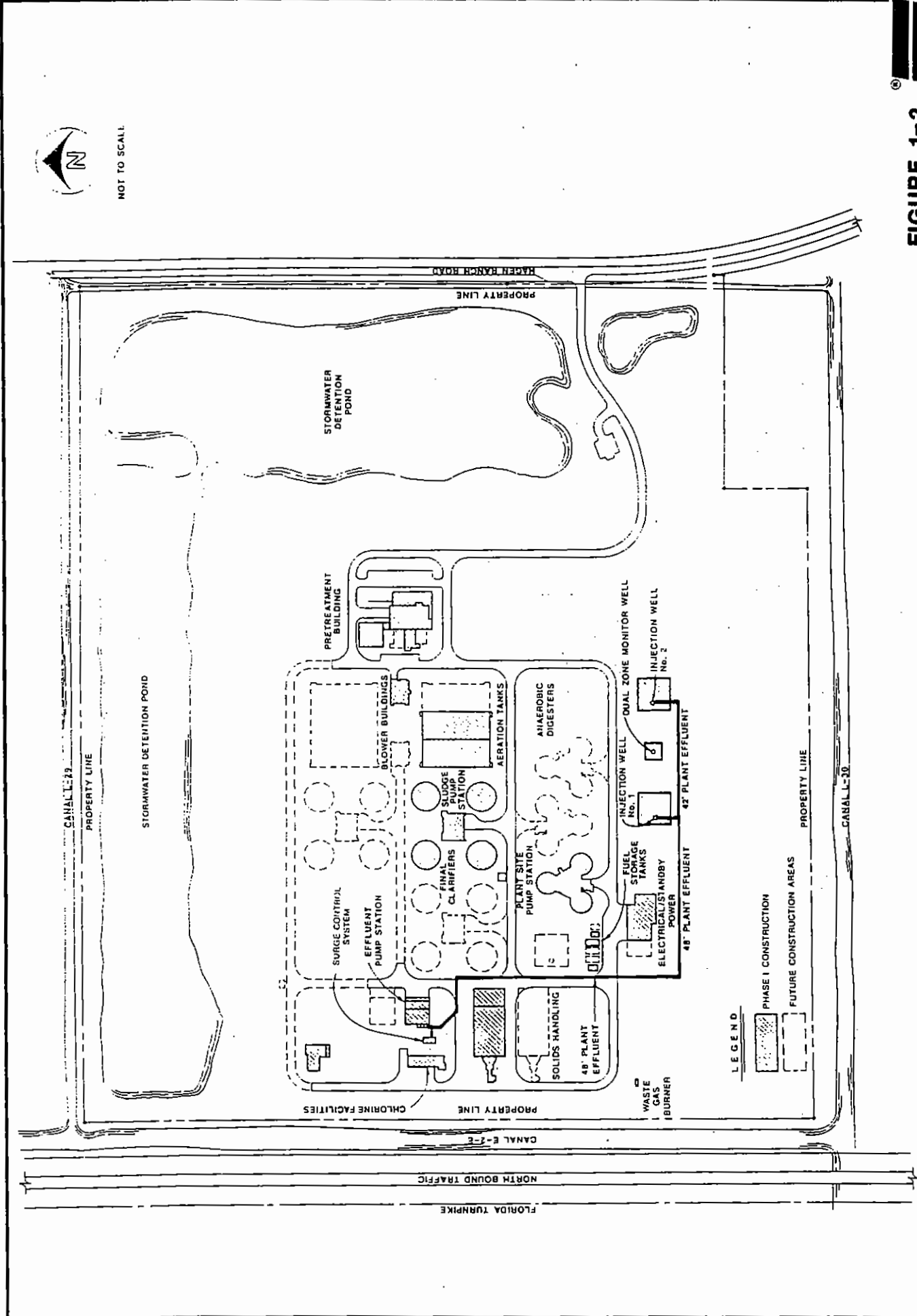




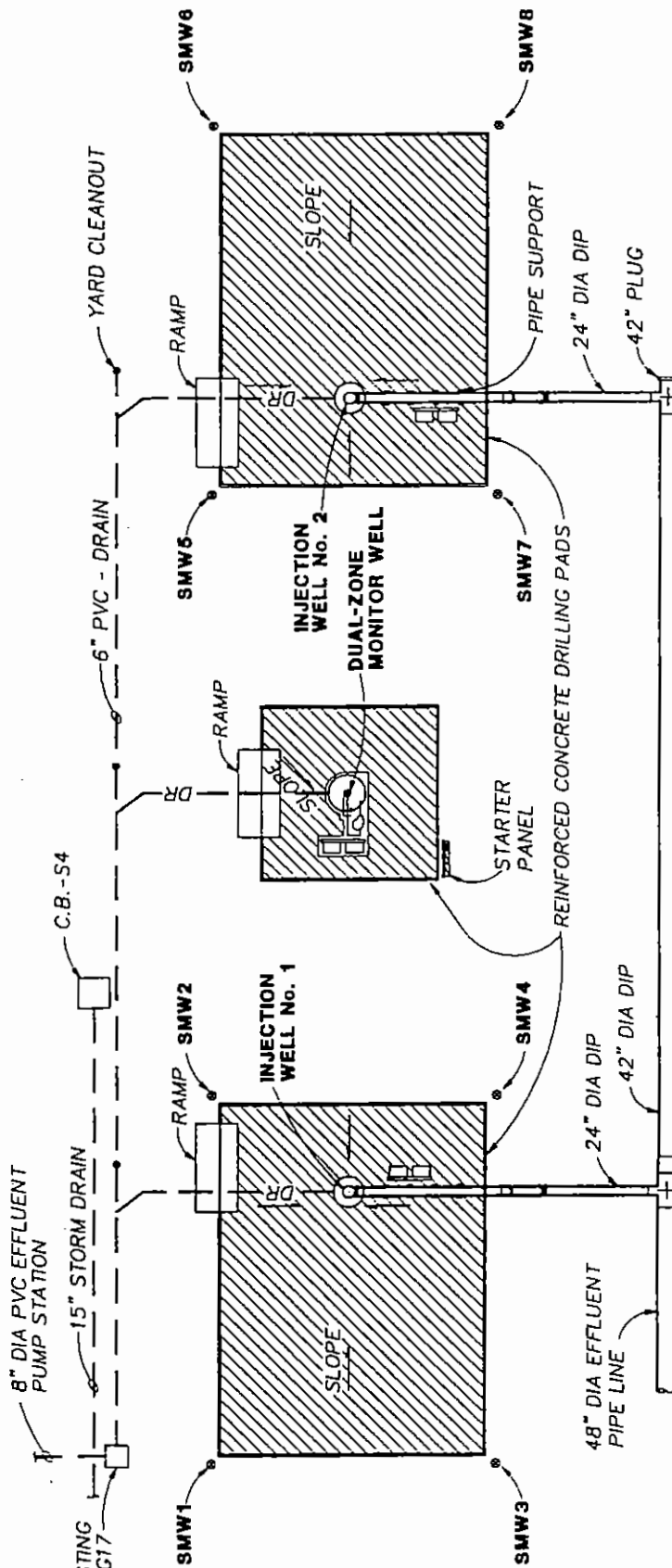
NOT TO SCALE



FIGURE 1-2
Site Plan



SCALE: 1"=40'-0"



LEGEND

- SMW Surficial Monitor Well
- MH Manhole
- CB Catch Basin
- DIP Ductile Iron Pipe



FIGURE 2-1
 Drilling Pad Diagram at the Palm Beach County
 Southern Region Wastewater Treatment Plant

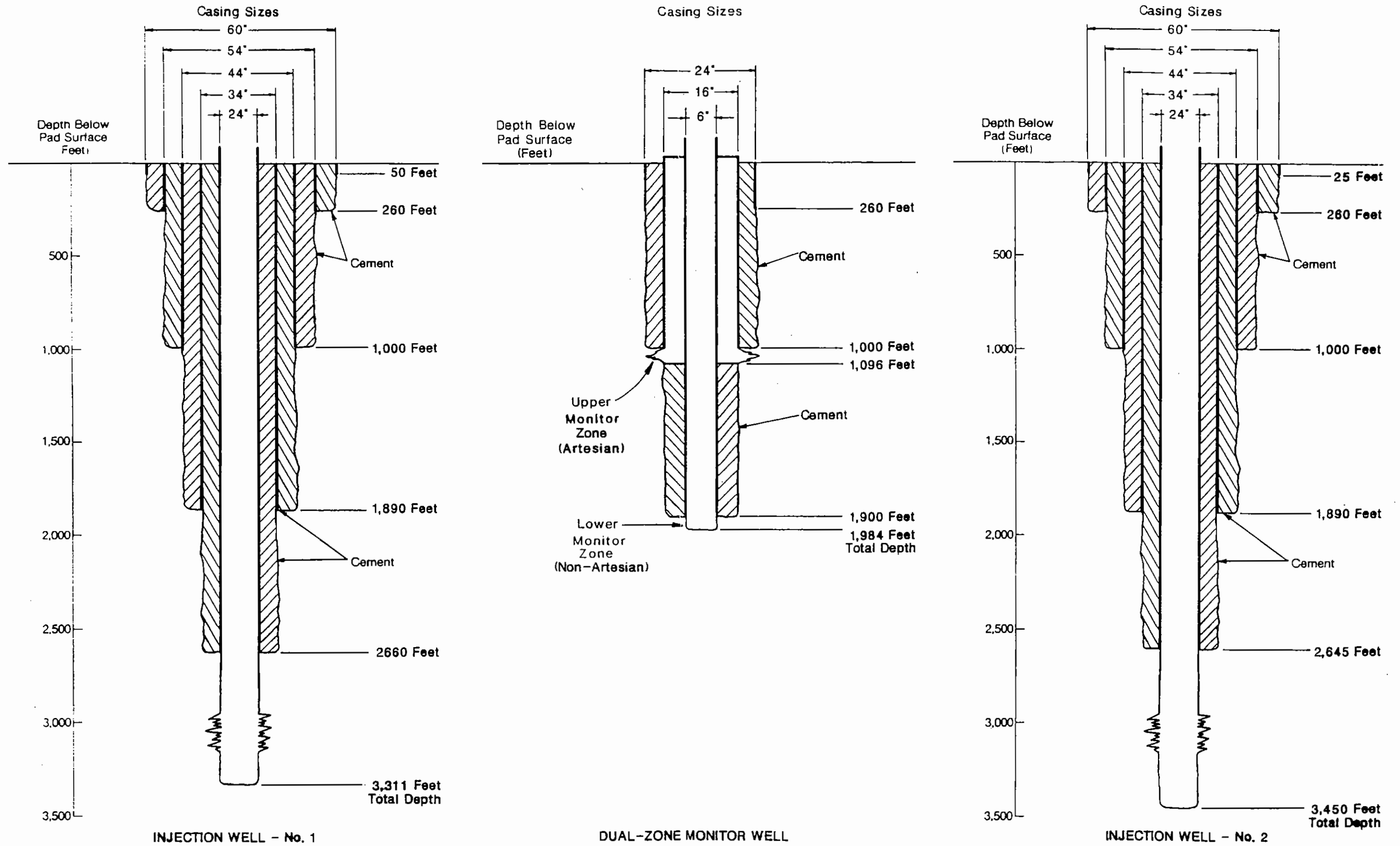


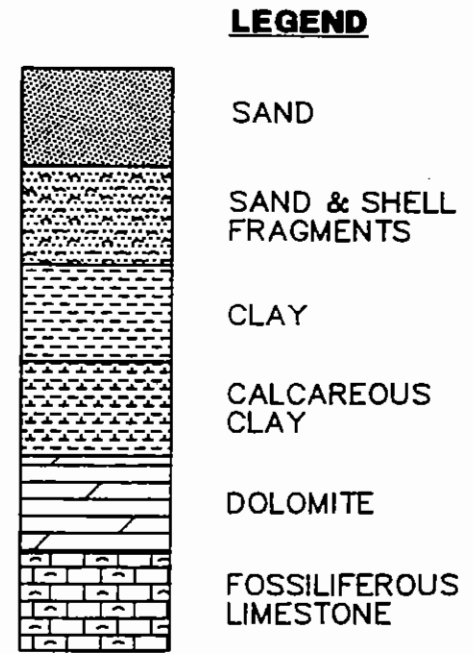
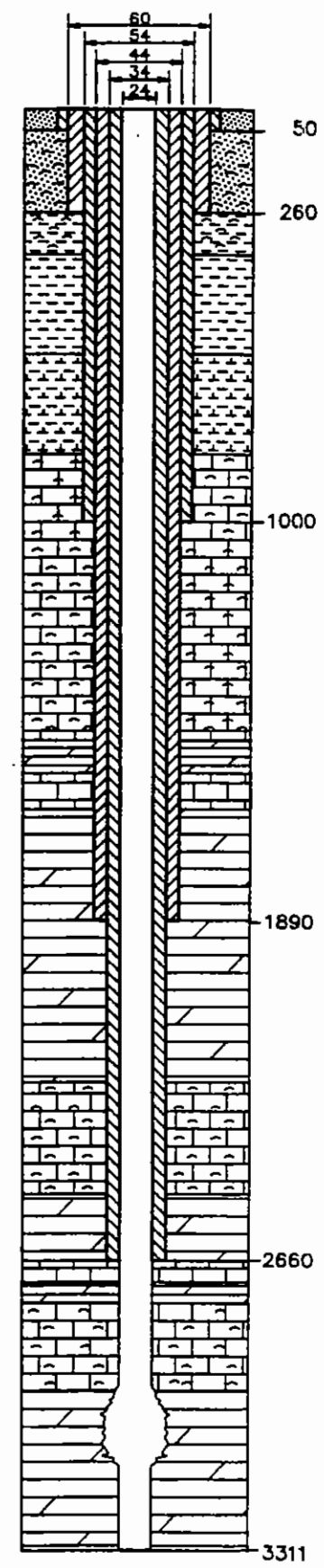
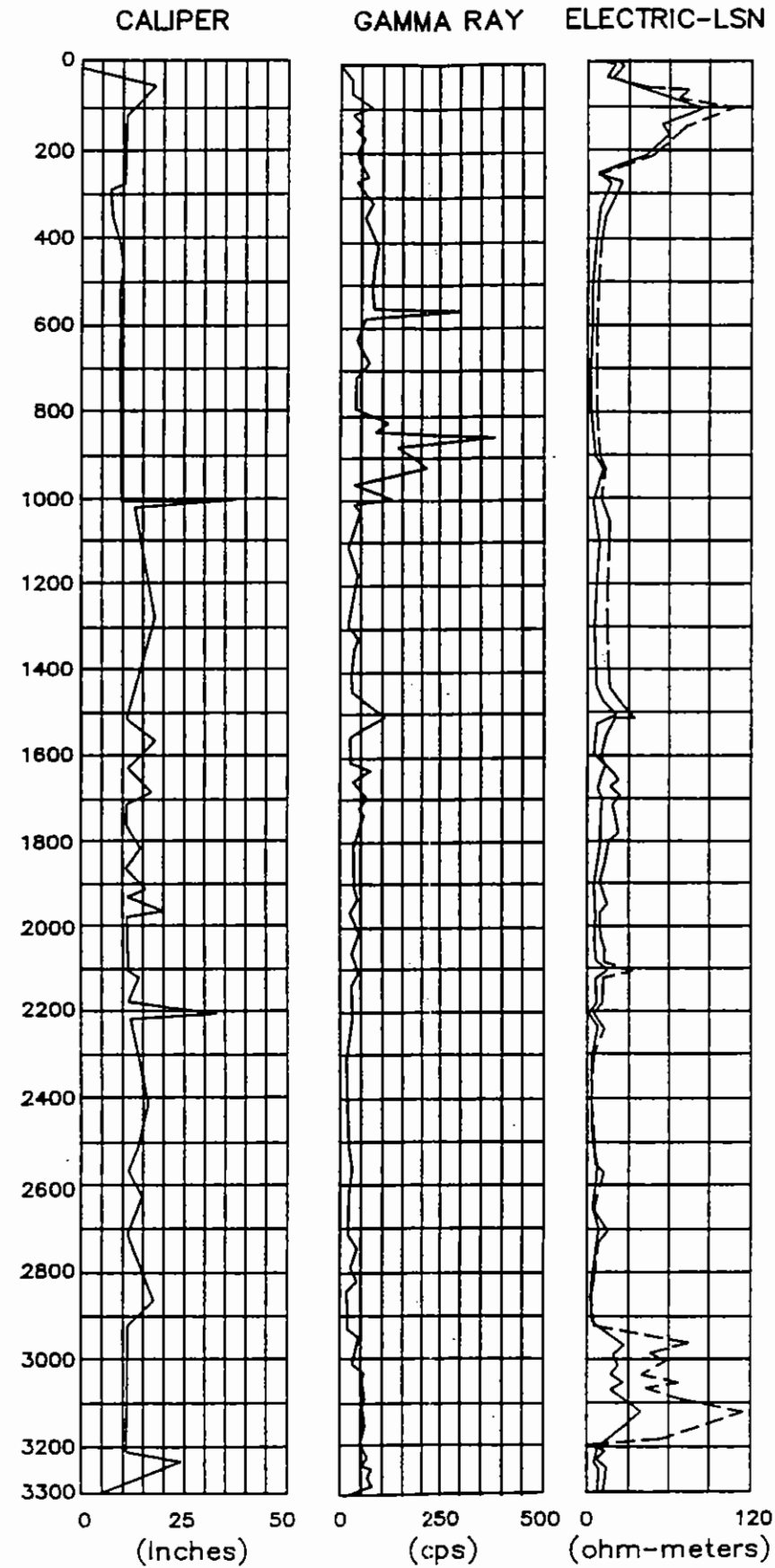
FIGURE 2-2 ©

Injection Well and Dual-Zone Monitor Well Completion Diagrams at the Palm Beach County Southern Region Wastewater Treatment Plant



LITHOLOGIC DESCRIPTION	GEOLOGIC AGE	FORMATION NAME	
Shell, Sand, Calcareously Cemented Sandstone	Pleistocene	Pamlico Sand/Anastasia	Surficial Aquifer
Sandy Clay with Shell	Pliocene	Tamlam	
Dark Olive Green Calcareous Clay	Miocene	Hawthorne	Confining Units
Dusky Yellow-Green Calcareous Clay, with Chert and shell		Tampa Limestone	
Fossiliferous Biomicritic Limestone, Yellowish Gray, Pale Orange with Calcareous Clay	Oligocene	Suwannee Limestone	Artesian Aquifer
Yellowish Gray, Porous, Finely Fragmented, Highly Fossiliferous Limestone	Upper Eocene	Avon Park Limestone	
Light Brown to Brown, very Fine to Medium Crystalline, Sucrosic Textured Dolomite	Middle Eocene	Lake City Limestone	
Interbedded Brown, Hard Crystalline Dolomite and Dolomitic Limestone with Chalky Fossiliferous Limestone			
Pale Orange, Yellowishgray, Fossiliferous Limestone			
Pale Yellowish Orange to Dusky Yellowish Brown, Finely Crystalline, Vuggy and Sucrosic Textured, Dolomite			
	Lower Eocene	Oldemar Limestone	High Permeability (Boulder Zone)

Floridan Aquifer System



NOTE
 cps Counts per Second
 LSN Long-Short Normal Electric Resistivity

NOTE: Geophysical Logs Generalized from Logs Performed in Field. The Geophysical Logs are Located in Volume II of this Report.

FIGURE 3-1
 GENERALIZED SUBSURFACE DATA FOR IW-1 AT THE PALM BEACH COUNTY SOUTHERN REGION WASTEWATER TREATMENT PLANT

