



**SOUTH FLORIDA WATER MANAGEMENT DISTRICT
WELL LOG**

WELL LOCATION
 County: MONROE
 Station I.D. 082000002
 Date 03/15/95 Well No. LKCORE (w-17156)
 Latitude 24 30 19.4 Longitude 80 47 30.1 (W)
 SE 1/4 NW 1/4 SW 1/4 SW 1/4 Section 26 Township 84S Range 35E
 Owner B.O.G. Phone ?
 Driller J.MORRIS Date Drilled NONE

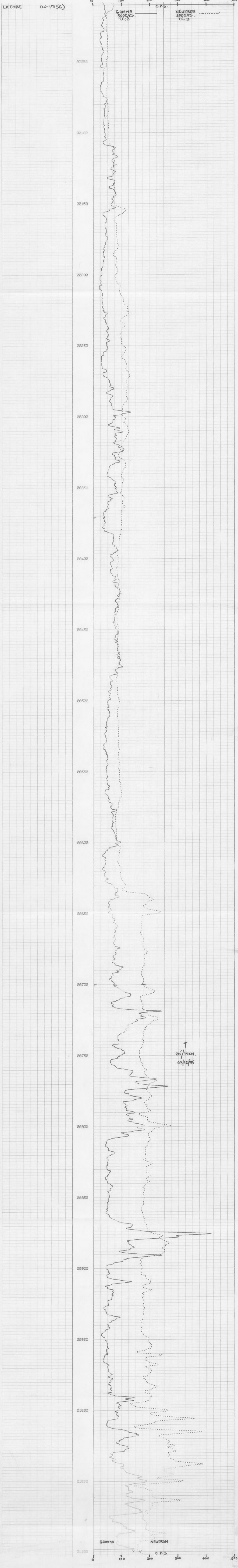
DATUM
 L.S. +5.00' MVD T.O.C. +1.90'

FLUID QUALITY
 Date 03/16/95 Time 1200 Source of Sample WELLHEAD
 Cl-Na mg/l Type of Fluid FORMATION WATER
 Temp. 76.4 F a/C Fluid Density NA g/cm³
 T.D.S.Na mg/l Spec Cond. NA umho/cm
 Logged By: E.P. DAJENHAUER Witnessed By: D. DEMONSTRANT
 Scale VARES
 Digitized By: NA

WELL CONSTRUCTION
 Drilling Method: Rot(D) AH() CT() Auger() Other CORE BARREL
 T. Depth-Driller 1400' T. Depth-Logger 1117'
 Casing Depth Driller 335' Casing Depth Logger 34'
 Bit Size 3 7/8" Casing Dia. I.D. 3.87"
 Hole Dia. 4" From 0' To 1117' Dia. NA From NA To NA
 Type of Casing P.V.C. Casing Thickness 0.23"
 Type of Screen OPEN HOLE Screen Int. FINNA To NA
 Yield Flow NA Well Use EXPLORATORY

TYPE OF SURVEYS RUN
 Logrod () Density ()
 Caliper () cat ()
 Flow meter () Fluid Sampler (X)
 16", 64" norms (X) Temperature (X)
 Neutron (X) Delta Temp. (X)
 Natural Gamma (X) sp (X)
 Fluid Resistivity (X) Single Pt. (X)

COMMENTS
 HOLE WAS BLOCKED AT 1117'
 POINT SAMPLES TAKEN AT 700', 1016', 1049', 1050' & 1089'





**SOUTH FLORIDA WATER MANAGEMENT DISTRICT
WELL LOG**

WELL LOCATION
 County MONROE
 Station I.D. 087000002
 Date 03/15/95 Well No. LKCORE (W-17156)
 Latitude 24 50 19.4 Longitude 80 47 30.1 (GPS)
 SE 1/4 NW 1/4 SW 1/4 SW 1/4 Section 26 Township 84S Range 35E
 Owner B.O.G. Phone ?
 Driller J.MORRILL Date Drilled NONE

DATUM
 L.S. +5.00' NGVD T.O.C. +1.90'

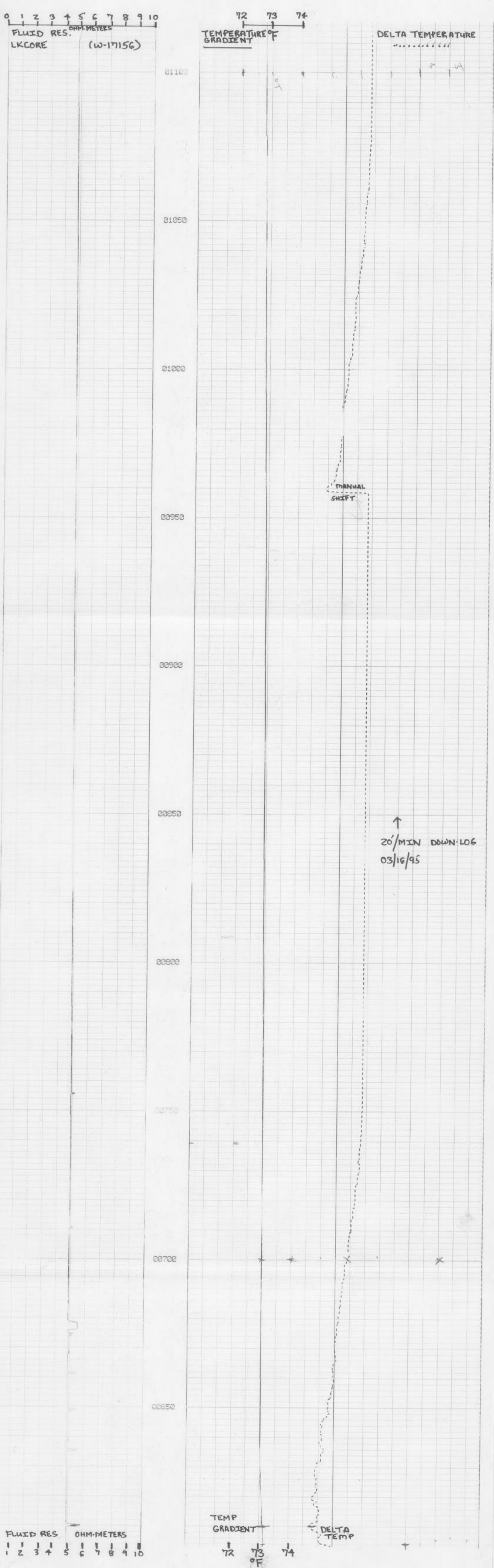
FLUID QUALITY
 Date 03/16/95 Time 1200 Source of Sample WELLHEAD
 Cl-NA mg/l Type of Fluid FORMATION WATER
 Temp. 76.4 F a/c Field Density NA a/c
 T.O.S.NA mg/l Spec. Cond. NA umhos/cm
 Logged By: E.P. DAUENHAUER Witnessed By: D. DEMONSTRANTI
 Scale VARIES
 Digitized By: NA

WELL CONSTRUCTION
 Drilling Method: Rot. (X) Air () CT () Auger () Other CORE BARREL
 T. Depth-Driller 1400' T. Depth-Logger 1117'
 Casing Depth Driller 635' Casing Depth Logger 634'
 BH Size 3 7/8" Casing Dia. I.D. 3.87"
 Hole Dia. 4" From 0' To 1117' Dia. NA From NA To NA
 Type of Casing P.V.C. Casing Thickness 0.03"
 Type of Screen OPEN HOLE Screen Int. From NA To NA
 Yield Flow NA Well Use EXPLORATORY

TYPE OF SURVEYS RUN

Lateral 6"	()	Density	()
Caliper	(X)	ect	()
Flow meter	()	Fluid Sampler	(X)
16".64" normals	(X)	Temperature	(X)
Neutron	(X)	Delta Temp.	(X)
Natural Gamma	(X)	SP	(X)
Fluid Resistivity	(X)	Single Pt.	(X)

COMMENTS
 HOLE WAS BLOCKED AT 1117'
 POINT SAMPLES TAKEN AT 700', 1016', 1040', 1050' & 1089'





SOUTH FLORIDA WATER MANAGEMENT DISTRICT
WELL LOG

WELL LOCATION

County MONROE
 Station I.D. DB72000002
 Date 03/15/95 Well No. LKCORE (W-17156)
 Latitude 24 50 19.4 Longitude 80 47 30.1 (GPS)
 SE 1/4 NW 1/4 SW 1/4 Section 26 Township 84S Range 35E
 Owner B.O.G. Phone ?
 Driller J.MORRILL Date Drilled NONE

DATUM

L.S. +5.00' NGVD T.O.C. +1.90'

FLUID QUALITY

Date 03/16/95 Time 1200 Source of Sample WELLHEAD
 CINA mg/l Type of Fluid FORMATION WATER
 Temp. 76.4 F o/C Field Density NA o/C
 T.D.S. NA mg/l Spec. Cond. NA umhos/cm
 Logged By: E.P. DAUENHAUER Witnessed By: D. DEMONSTRANTI
 Scale VARIABLES
 Digitized By: NA

WELL CONSTRUCTION

Drilling Method: Rot. (X) Air () CT () Auger () Other CORE BARREL
 T. Depth-Driller 1400' T. Depth-Logger 1117'
 Casing Depth Driller 635' Casing Depth Logger 634'
 Bit Size 3 7/8" Casing Dia. I.D. 3.87"
 Hole Dia. 4" From 0' To 1117' Dia. NA From NA To NA
 Type of Casing P.V.C. Casing Thickness 0.03"
 Type of Screen OPEN HOLE Screen Int. From NA To NA
 Yield Flow NA Well Use EXPLORATORY

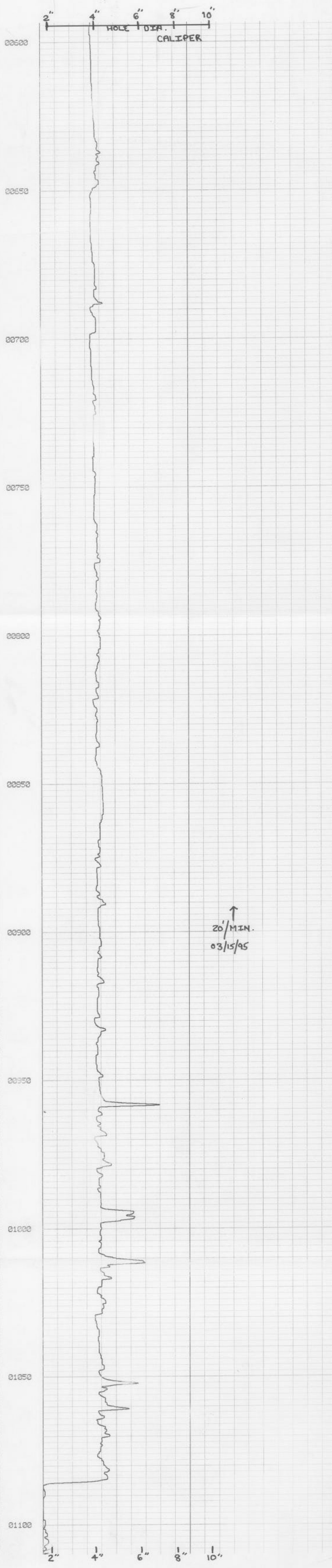
TYPE OF SURVEYS RUN

Lateral 6' () Density ()
 Caliper () ccl ()
 Flow meter () Fluid Sampler (X)
 16".84" normals (X) Temperature (X)
 Neutron (X) Delta Temp. (X)
 Natural Gamma (X) SP (X)
 Fluid Resistivity (X) Single Pt. (X)

COMMENTS

HOLE WAS BLOCKED AT 1117'
POINT SAMPLES TAKEN AT 700', 1016', 1040', 1050' & 1089'

LKCORE (W-17156)



↑
20' MIN.
03/15/95

AE GEOPHYSICAL
SERVICES
LAKELAND, FL.
RELATIVE VELOCITY
AMPLITUDE
SIGNATURE LOG

COMPANY UNIVERSITY OF MIAMI

WELL ENP #1

FIELD N/A

COUNTY DADE

STATE FL

LOCATION EVERGLADES NATIONAL PARK

Sec. 36 Twp. 58S Rge. 36E

County: DADE
Field: N/A
Location: EVERGLADES NATIONAL PARK
Well: ENP #1
Company: UNIVERSITY OF MIAMI

Permanent datum GROUND SURFACE Elev. N/A
Log Measured From ZERO FEET Rbove Perm. Datum
Drilling Measured From N/A

Date: 5-4-95
Run No. DNE
Depth-Driller: 615'

Depth-Logger: 522'

Bitm Log Interval: 528'

Top Log Interval: 171'

Type Log: SONIC

Type Fluid In Hole: HUD

Salinity PPH CL: N/A

Density: N/A

Level: N/A

Max Rec. Temp.: N/A

Operating Rig Time: N/A

Recorded By: JKL

Witnessed By: K. CUNNINGHAM

Job Trt. No.: N/A

Other Services: NONE

Elev.: K.B. N/A
D.F. N/A
C.L. N/A

CASING RECORD

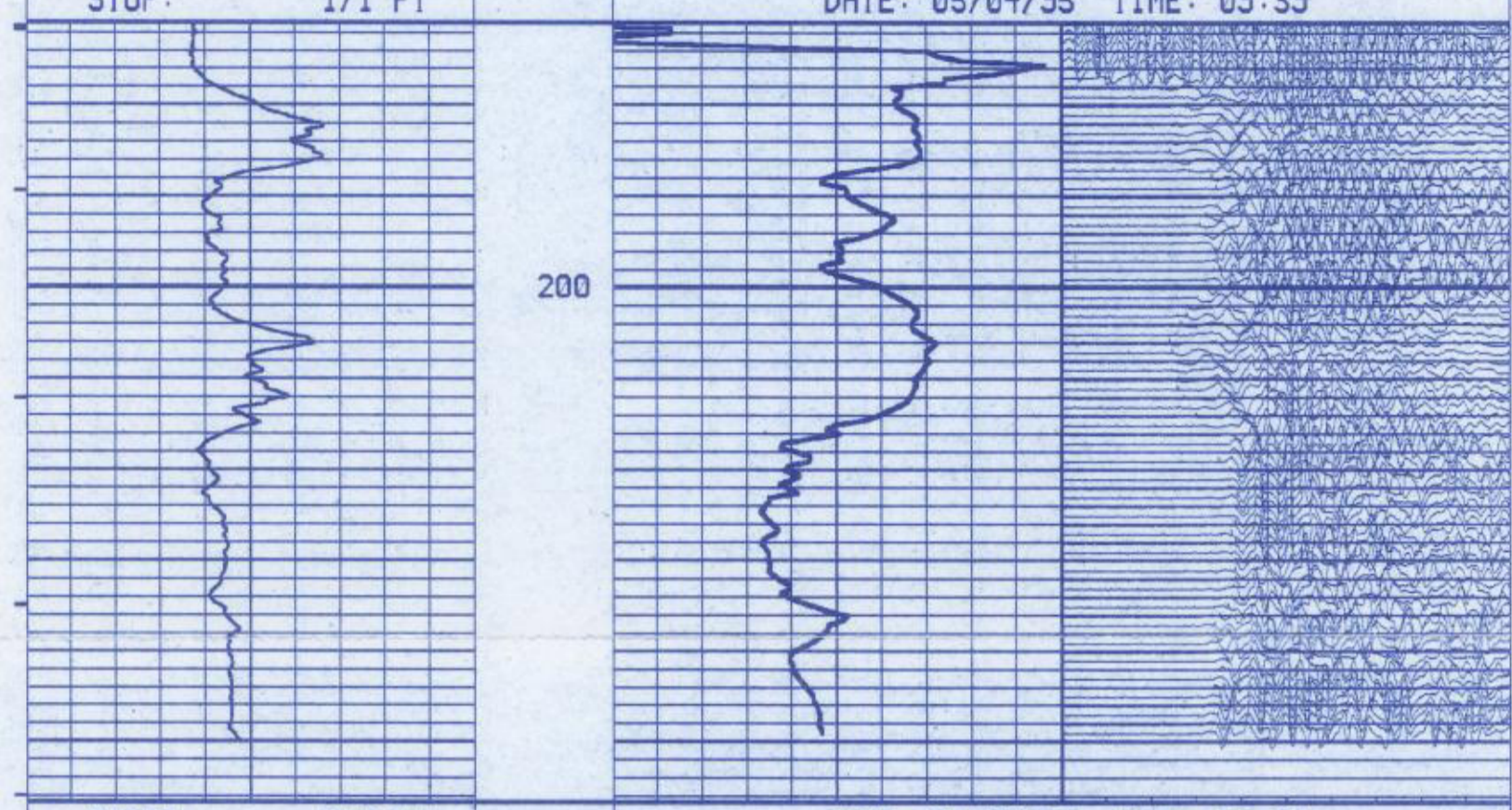
Size	Hgt	From	To
4" STEEL	N/A	0'	180'
6" STEEL	N/A	0'	20'
N/A	N/A	N/A	N/A
N/A	N/A	N/A	N/A
N/A	N/A	N/A	N/A
N/A	N/A	N/A	N/A
N/A	N/A	N/A	N/A
N/A	N/A	N/A	N/A
N/A	N/A	N/A	N/A
N/A	N/A	N/A	N/A

TUBING RECORD

Size	Hgt	From	To
N/A	N/A	N/A	N/A
N/A	N/A	N/A	N/A
N/A	N/A	N/A	N/A
N/A	N/A	N/A	N/A
N/A	N/A	N/A	N/A
N/A	N/A	N/A	N/A
N/A	N/A	N/A	N/A
N/A	N/A	N/A	N/A
N/A	N/A	N/A	N/A
N/A	N/A	N/A	N/A

REMARKS: TAPE 8-54-1
TOOL CHASSIS AVL 002
SIGNATURE REFERENCES FAR RECEIVER, RECEIVER SPACING = 1 FOOT.

NOTICE: All interpretations are opinions based on inferences from electrical or other measurements and we cannot, and do not, guarantee the accuracy or correctness of any interpretations, and we shall not, except in the case of gross or willful negligence on our part, be liable or responsible for any loss, costs, damages or expenses incurred or sustained by anyone resulting from any interpretation made by one of our officers, agents or employees. These interpretations are also subject to our General Terms and Conditions as set out in our current Price Schedule. AE GEOPHYSICAL

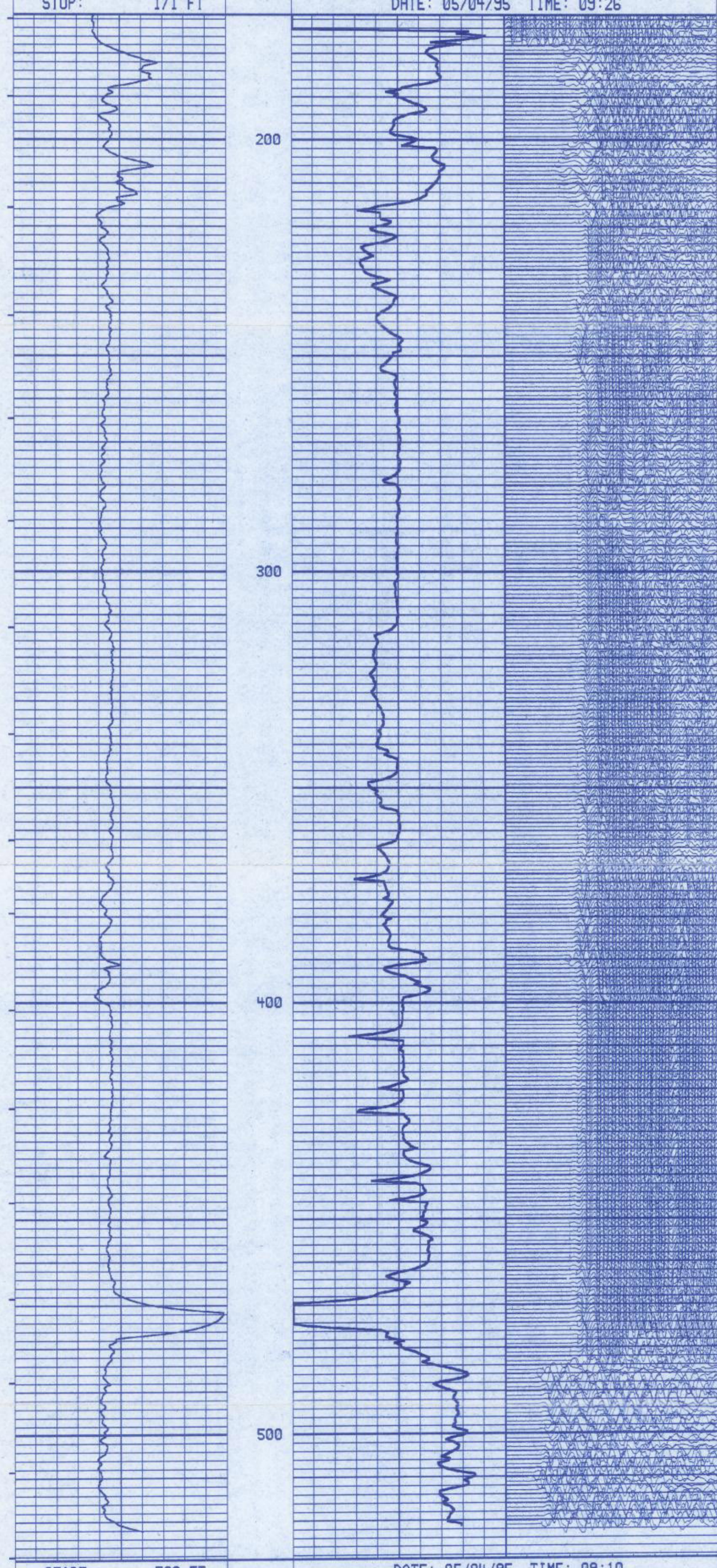


START: 256 FT DATE: 05/04/95 TIME: 09:31

RELATIVE AMPLITUDE

STOP: 171 FT

DATE: 05/04/95 TIME: 09:26



START: 528 FT DATE: 05/04/95 TIME: 09:10

RELATIVE AMPLITUDE

STOP: 537 FT

DATE: 05/04/95 TIME: 09:02

TRAVEL TIME

Time: 200

START: 537 FT DATE: 05/04/95 TIME: 09:02

TRAVEL TIME

Time: 200

AE GEOPHYSICAL SERVICES
LAKELAND, FL.
RELATIVE VELOCITY
RELATIVE AMPLITUDE
SIGNATURE LOG

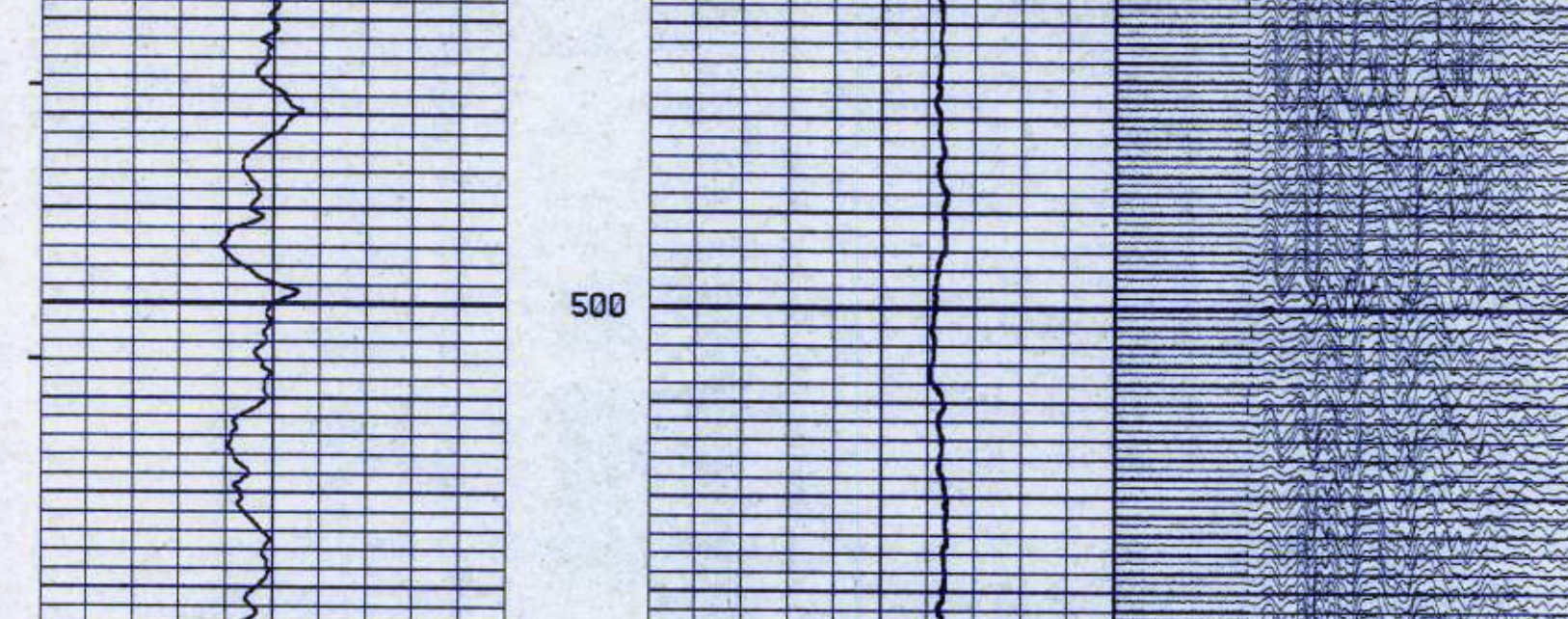
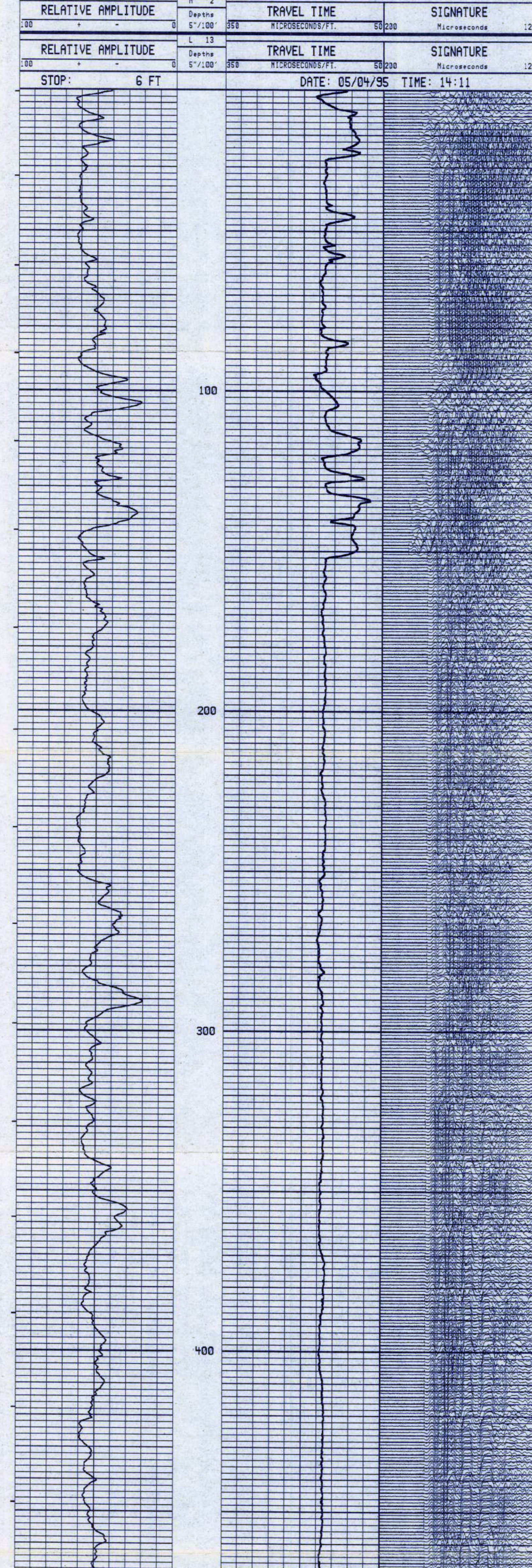
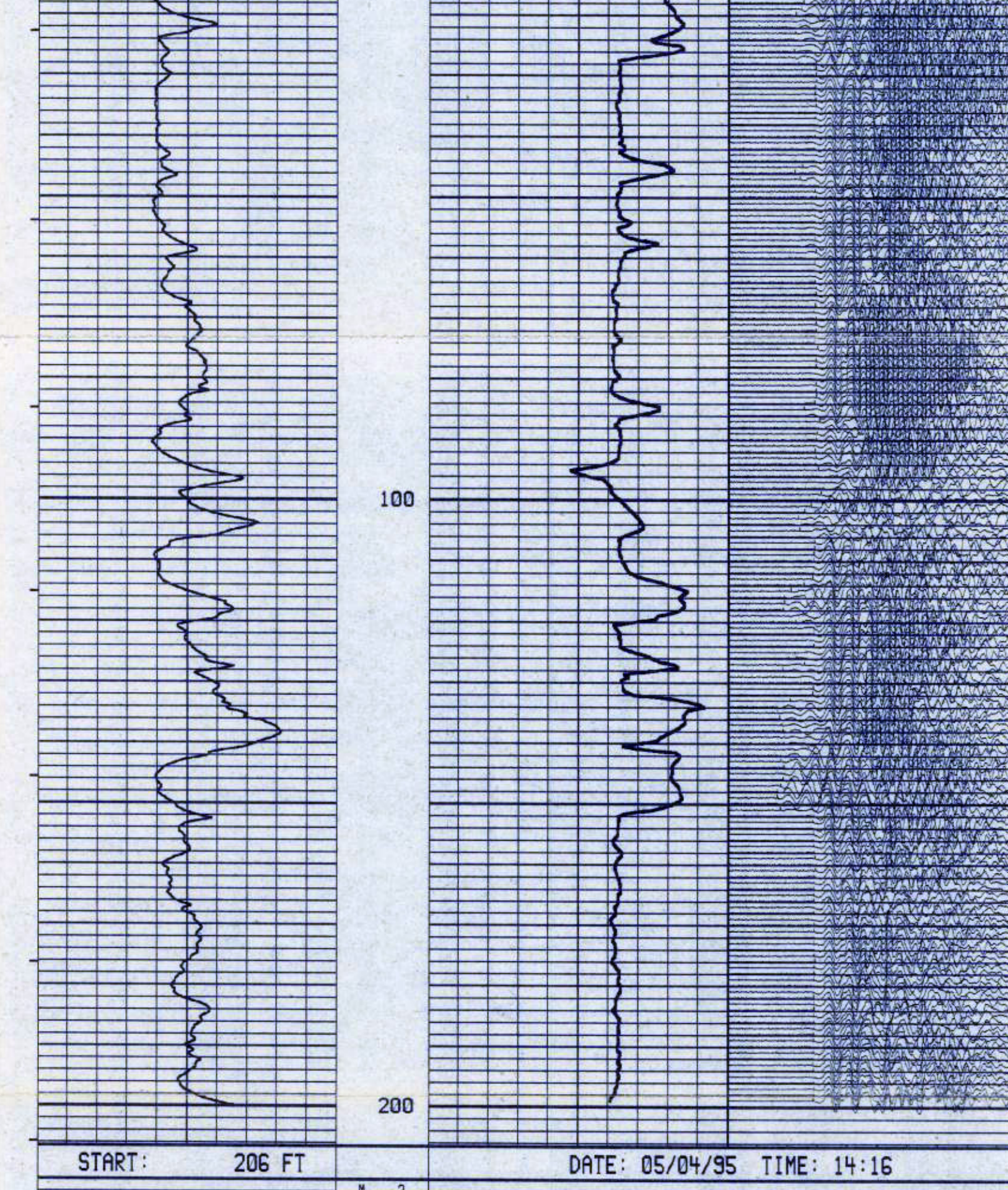
COMPANY UNIVERSITY OF MIAMI
WELL LONG KEY #1
FIELD N/A
COUNTY MONROE
LOCATION FIESTA KEY, FL.
STATE FL

Permanent data CDMDM SURFACE
Log Measured From ZERO FEET
Drilling Measured From N/A
Depth-Driller: J.M.H.
Depth-Logger: J.M.H.
Top Log Interval: 112'-113'
Bottom Log Interval: 113'-114'
Type: 2B
Log: 3BE
Elev.: N/A
D.F.: N/A
C.L.: N/A

County	MONROE	State	FL
Well	LONG KEY #1	Field	N/A
Location	FIESTA KEY, FL.	County	MONROE
State	FL	City	
Depth-Driller	J.M.H.	Depth-Logger	J.M.H.
Top Log Interval	112'-113'	Bottom Log Interval	113'-114'
Type	2B	Log	3BE
Elev.	N/A	D.F.	N/A
C.L.	N/A		

REMARKS TAPES 8-94-1
TOOL CHASIS AVL 802
SIGNATURE REFERENCES FOR RECEIVER, RECEIVER SPACING = 1 FOOT.

NOTICE: All interpretations are opinions based on inferences from electrical or other measurements and we cannot, and do not, guarantee the accuracy or correctness of any interpretations, and we shall not, except in the case of gross or willful negligence on our part, be liable or responsible for any loss, costs, damages or expense incurred or sustained by anyone resulting from any interpretation made by one of our officers, agents or employees. These interpretations are also subject to our General Terms and Conditions as set out in our current Price Schedule. AE GEOPHYSICAL



Depth	5'-100'	Time	200
-------	---------	------	-----



SOUTH FLORIDA WATER MANAGEMENT DISTRICT
WELL LOG

WELL LOCATION

County MONROE
 Station ID 087000002
 Date 03/15/95 Well No. LKCORE (W-17156)
 Latitude 24 59 19.4 Longitude 80 47 30.1 (GPS)
 SE 1/4 NW 1/4 SW 1/4 SW 1/4 Section 26 Township 64S Range 35E
 Owner B.O.G. Phone ?
 Driller J.MORRILL Date Drilled NONE

DATUM

L.S. +5.00' NOVD T.O.C. +1.90'

FLUID QUALITY

Date 03/16/95 Time 1200 Source of Sample WELLHEAD
 Cl-NA mg/l Type of Fluid FORMATION WATER
 Temp. 76.4 F o/C Field Density NA o/C
 T.D.S. NA mg/l Spec. Cond. NA umhos/cm
 Logged By: E.P. DAUENHAUER Witnessed By: D. DEMONSTRANTI
 Scale VARIABLES
 Digitized By: NA

WELL CONSTRUCTION

Drilling Method Rot. (X) Air () CT () Auger () Other CORE BARREL
 T. Depth-Driller 1400' T. Depth-Logger 1117'
 Casing Depth Driller 35' Casing Depth Logger 34'
 Bit Size 3 7/8" Casing Dia. LD. 3.87"
 Hole Dia. 4" From 0' To 1117' Dia. NA From NA To NA
 Type of Casing P.V.C. Casing Thickness 0.03"
 Type of Screen OPEN HOLE Screen Int. From NA To NA
 Yield Flow NA Well Use EXPLORATORY

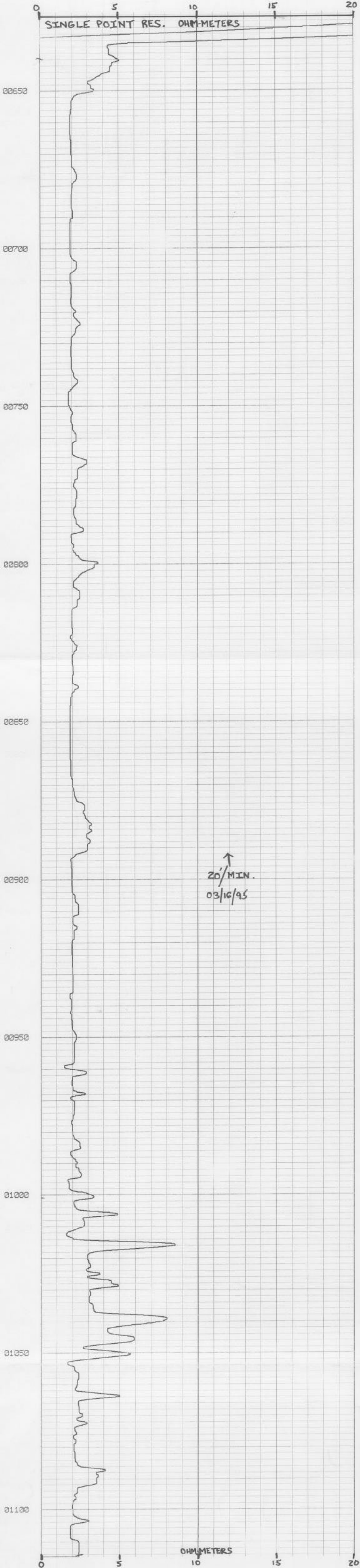
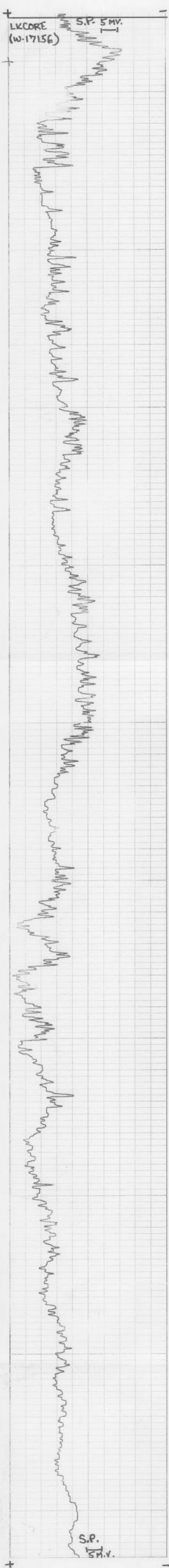
TYPE OF SURVEYS RUN

Lateral G' () Density ()
 Caliper (x) oct ()
 Flow meter () Fluid Sampler (x)
 16", 64" normals (x) Temperature (x)
 Neutron (x) Delta Temp. (x)
 Natural Gamma (x) SP (x) ●
 Fluid Resistivity (x) Single PL (x) ●

COMMENTS

HOLE WAS BLOCKED AT 1117'

POINT SAMPLES TAKEN AT 700', 1018', 1040', 1050' & 1089'.





**SOUTH FLORIDA WATER MANAGEMENT DISTRICT
WELL LOG**

WELL LOCATION
 County MONROE
 Station I.D. 087000002
 Date 03/15/95 Well No. LKCORE (W-17156)
 Latitude 24 50 19.4 Longitude 80 47 30.1 (GPS)
 SE 1/4 NW 1/4 SW 1/4 SW 1/4 Section 26 Township 64S Range 35E
 Owner B.O.G. Phone ?
 Driller J.MORRILL Date Drilled NONE

DATUM
L.S. +5.00' NGVD T.O.C. +1.90'

FLUID QUALITY
 Date 03/16/95 Time 1200 Source of Sample WELLHEAD
 ClNA mg/l Type of Fluid FORMATION WATER
 Temp. 76.4 F o/C Field Density NA o/C
 T.D.S.NA mg/l Spec.Cand. NA umhos/cm
 Logged By: E.P. DAUENHAUER Witnessed By: D. DEMONSTRANTI
 Scale VARIES
 Digitized By: NA

WELL CONSTRUCTION
 Drilling Method: Rot. (X) Air () CT () Other CORE BARREL
 T. Depth-Driller 1400' T. Depth-Logger 1117'
 Casing Depth Driller 635' Casing Depth Logger 634'
 Bit Size 3 7/8" Casing Dia. LD. 3.87"
 Hole Dia. 4" From 0' To 1117' Dia. NA From NA To NA
 Type of Casing P.V.C. Casing Thickness 0.03"
 Type of Screen OPEN HOLE Screen Int. From NA To NA
 Yield Flow NA Well Use EXPLORATORY

TYPE OF SURVEYS RUN

Lateral 6'	()	Density	()
Caliper	(X)	col	()
Flow meter	()	Fluid Sampler	(X)
15", 64" norms	(X)	Temperature	(X)
Neutron	(X)	Delta Temp.	(X)
Natural Gamma	(X)	SP	(X)
Fluid Resistivity	(X)	Single Pt.	(X)

COMMENTS
HOLE WAS BLOCKED AT 1117'
POINT SAMPLES TAKEN AT 700', 1016', 1040', 1050' & 1089'

