

**DOWN
Construction
Preliminary Data
Blue Cypress**

**Aquifer System Monitor Wells:
Surficial IR-0944
Floridan IR-0968**

**Test Bore Holes:
IR-0945
IR-0974**

SJRWMD Program No. 31-58200

**Division of Ground Water Programs,
Department of Resource Management
St. Johns River Water Management District
Palatka, Florida**

December 9, 2002

*All data, figures, tables and information are provisional and generated for the Division
of Ground Water Program's use.*

Table of Contents

Site Layout

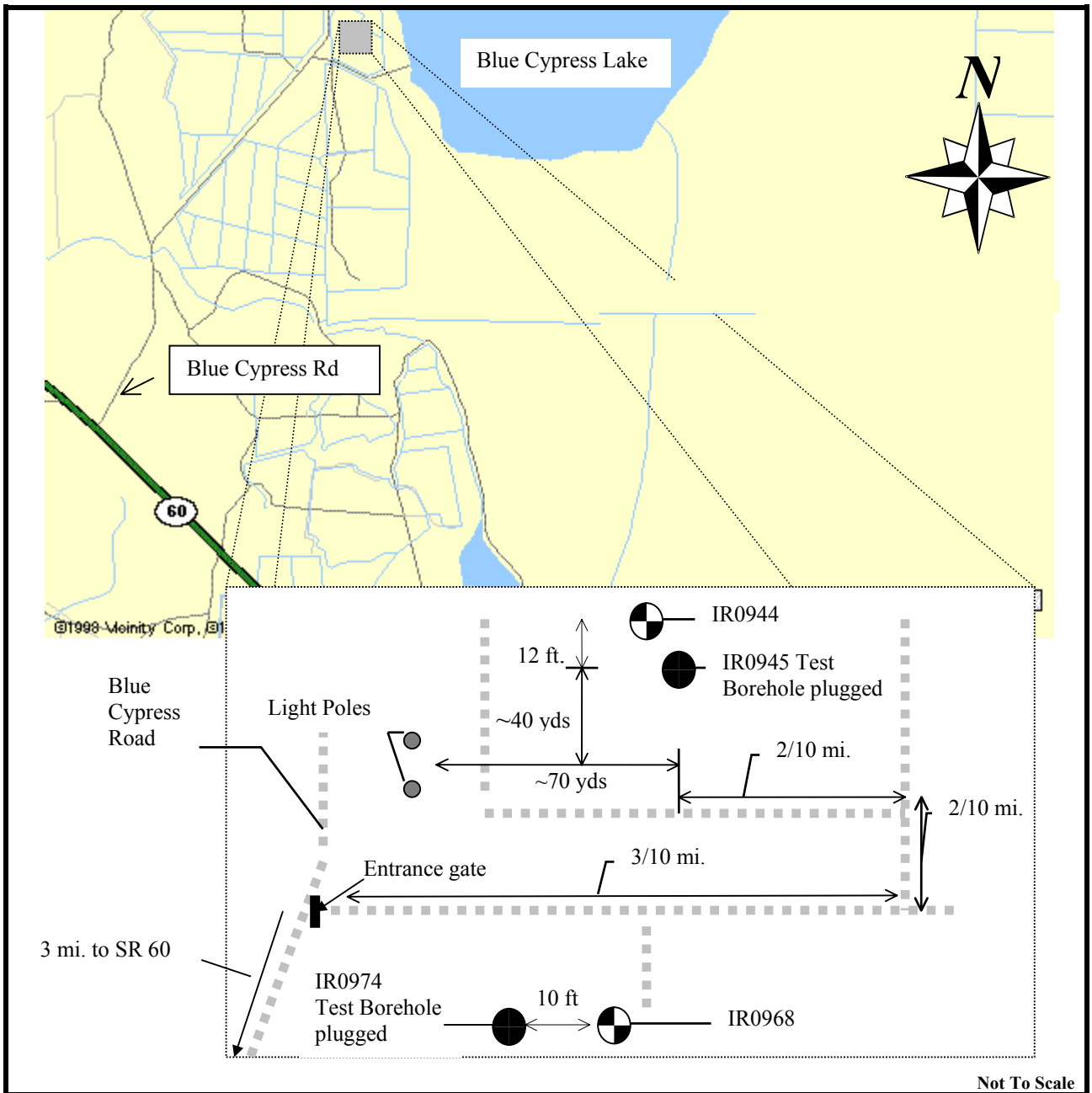
Asbuilt(s)

Ground Water Levels / Drill Rates

Water Quality

Grout

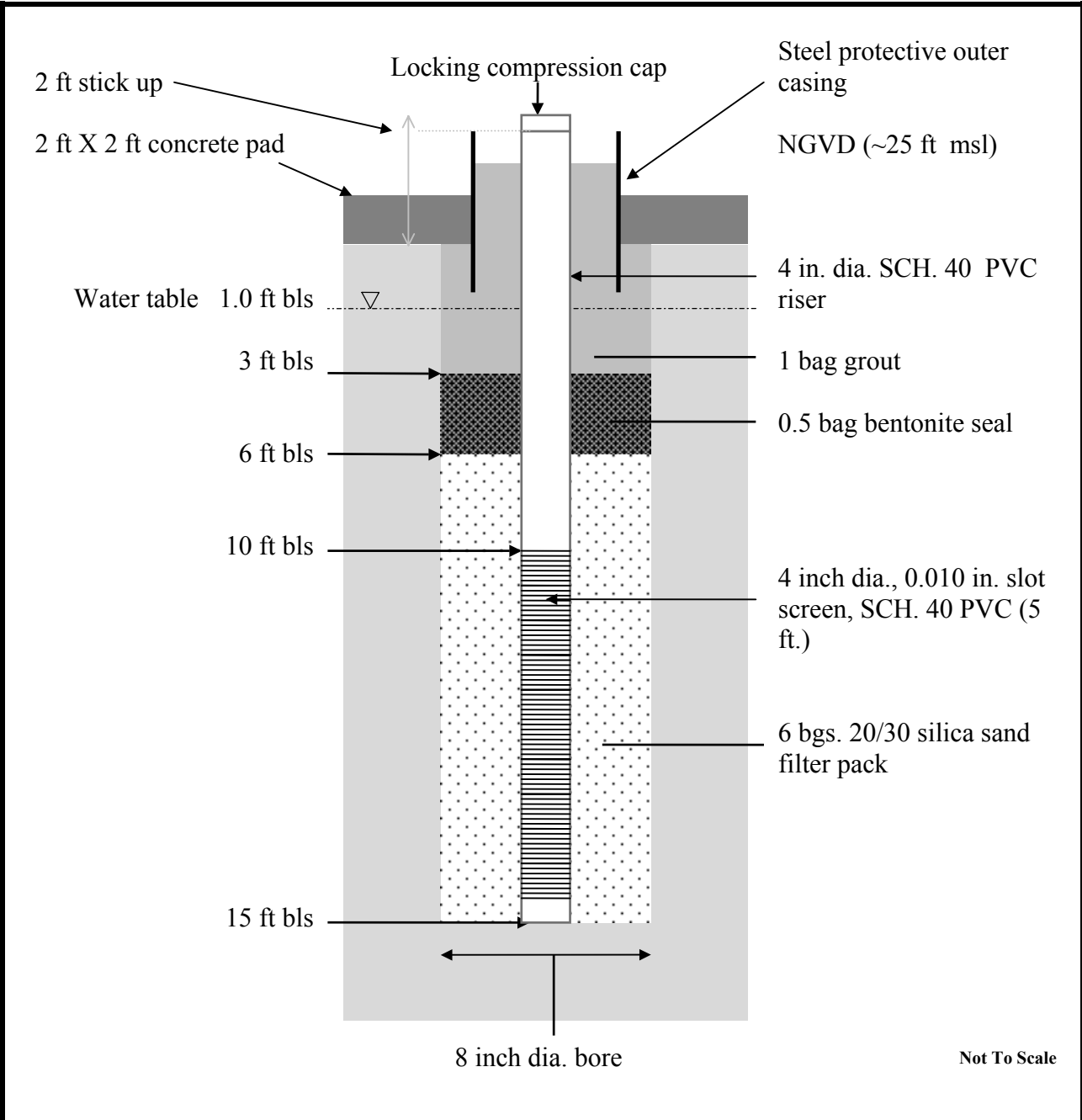
Lithologic Logs



Project: Blue Cypress
Lat/Long/GPS: 274229/804640/No
TRS: 32s 36e 12
Topo: Drum NE
Site Elevation: ~ 25 ft NGVD
Project No: 31-58200

SJR WMD

Figure 1. Site Map



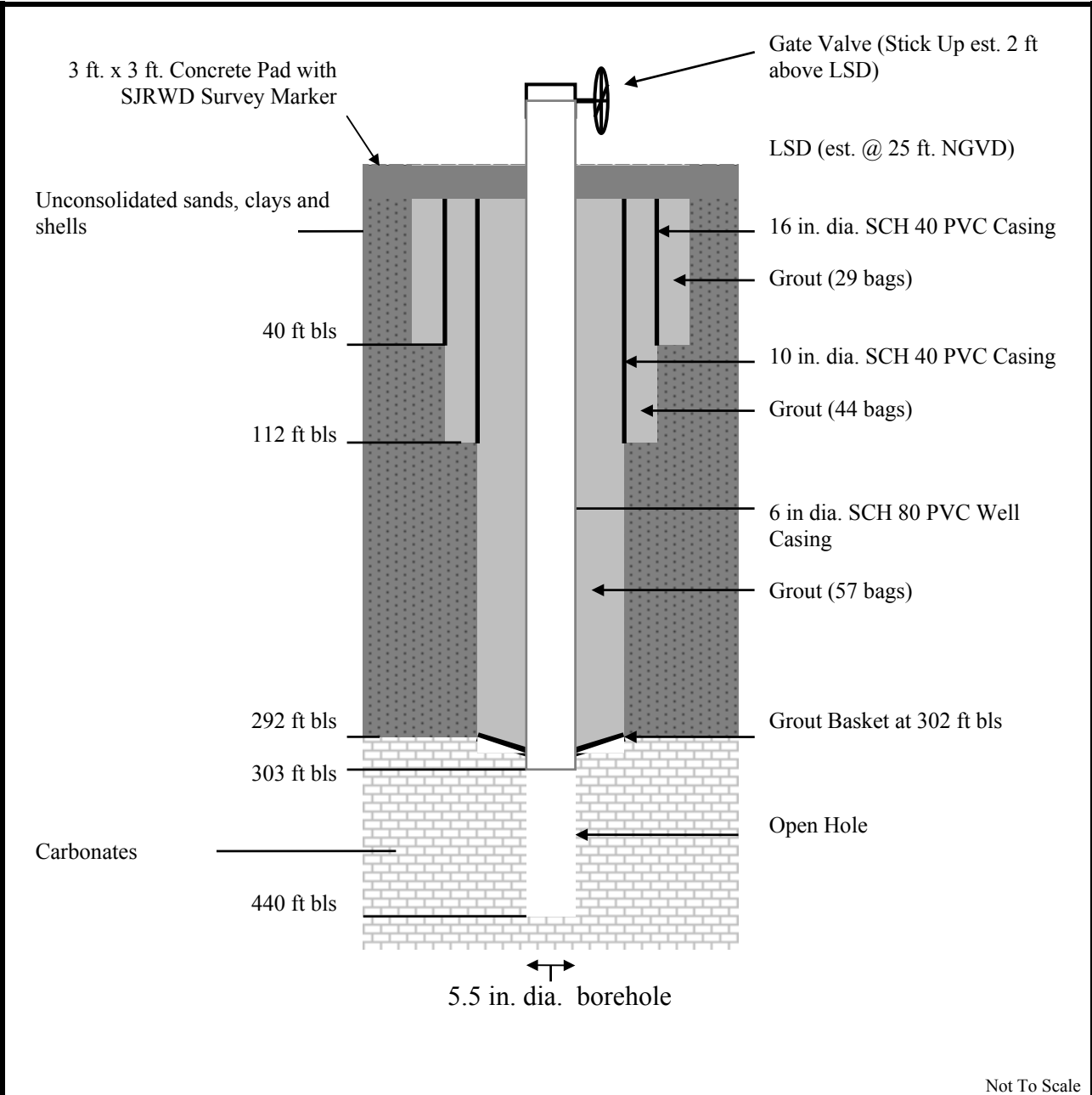
Project: Blue Cypress Site

Project No: 31-58200

Well Completed: February 26, 1997

SJRWMD

Figure 2.
Surficial Monitor Well IR-0944



Project: Blue Cypress

Project No: 31-58200

Well Completed: November 11, 1997

SJRWMD

Figure 3.
Floridan Monitor Well IR0968

Table 1. Groundwater Quality And Development

Site: Blue Cypress

Well Number: IR0944 (Surficial)

Hydrologist: RBrooks

LAB ✓	Date/Time (yy:mm:dd/hh:mm)	Rate (gpm)	Σ Vol (gal)	Screen Interval (ft)	Temp (Deg C)	pH	Chlorides (mg/L)	Conductivity (us/cm)
✓	970226/1330	20	2,100	10-15	22.5	6.9	NR	838

Table 2. Drilling Data

Site: Blue Cypress

Well ID: IR0968 (Floridan)

From (ft, bls)	To (ft, bls)	Bit Size (in.)	Time (min)	Rate (ft/hr)
320	340	5 1/2	NR	NR
340	360	5 1/2	60	20
360	380	5 1/2	65	19
380	400	5 1/2	42	29
400	420	5 1/2	25	48
420	440	5 1/2	65	19

Table 3. Groundwater Levels

Site: Blue Cypress

Well ID: IR0968 (Floridan)

Water Levels			Borehole	
Date/Time (yy:mm:dd/hh:mm)	Casing (ft, bls)	Rod (ft, bls)	Total Depth (ft, bls)	Open Hole (ft)
971111-NA	*Flowing	Flowing	320	17
971111-NA	Flowing	Flowing	340	37
971111-NA	Flowing	Flowing	360	57
971111-NA	Flowing	Flowing	380	77
971111-NA	Flowing	Flowing	400	97
971111-NA	Flowing	Flowing	420	117
971111-NA	Flowing	Flowing	440	137

* Heads not measured.

Table 4. Groundwater Quality

Site: Blue Cypress

Well ID: IR0968 (Floridan)

Hydrologist: Alan Story

Casing Depth: 303 ft.

LAB ✓	Date/Time (yy:mm:dd/hh:mm)	Sample Depth (ft, bls)	Open Hole (ft)	Temp (Deg C)	Chlorides (mg/L)	Conductivity (us/cm)
	971111/1105	340	37	26.5	554	2322
	971111/1220	360	57	27.5	582	2399
	971111/1330	380	77	28	700	2326
	971111/1427	400	97	2.5	734	2351
	971111/1507	420	117	27	575	2298
✓	971111/1635	440	137	26	554	2020

Table 5. Grout Data

Site: Blue Cypress

Well ID: IR0968 (Floridan)

DATE	TAG DEPTH (ft)	ANNULUS/ BORE (in.)	QUANTITY (yds/bgs)	MATERIAL	COMMENTS
10/15/97	40	B-22	18 bgs	grout	Grout 40 ft of 16 in. dia. SCH. 40 PVC casing
10/16/97	15	A-22	11 bgs	grout	Grout through tremie pipe to surface
10/22/97	112	B-15	34 bgs	grout	Grout 112 ft of 10 in. dia. SCH. 40 PVC casing
10/23/97	25	A-15	10 bgs	grout	Grout through tremie pipe to surface
11/05/97	303	B-10	18 bgs	grout	Grout 303 ft of 6 in. dia. SCH. 80 PVC casing
11/06/97	238	A-10	20 bgs	grout	Grout through tremie pipe
11/10/97	103	A-10	18 bgs	grout	Grout through tremie pipe
11/12/97	2	A-10	1 bgs	grout	Grout through tremie pipe to surface

Lithologic Description

Site: Blue Cypress

Test Borehole: IR0945

Samples Described By: R. Brooks and Alan Story

From (ft)	To (ft)	Lithology
4	6	Sand, brown, very fine to fine
9	11	Sand, yellowish gray, very fine to fine, abundant shell fragments
14	16	Silt, gray
19	21	Clay, gray, semi-stiff, coarse shell fragments, minor sand
24	26	Clay, greenish gray, weathered shell, minor sand
29	31	Clay, dark green, minor shell and sand
34	36	Clay, dark green, minor shell and sand
39	41	Clay, dark green, minor shell and sand
44	46	Clay, dark green, minor shell and sand
49	51	Clay, light greenish gray, weathered shell
54	56	Sand, light greenish gray, silts
59	61	Clay, light gray, weathered shell
64	66	Clay, dark green, minor shell
69	71	Clay, dark green, minor shell
74	76	Clay, dark green, minor shell
79	81	Clay, dark green, dry
84	86	Clay, dark green, phosphatic, with small layers of sand
89	91	Clay, dark green, phosphatic, with small layers of sand
99	101	Clay, dark green, phosphatic, with small layers of sand
104	106	Clay, dark green, phosphatic, with small layers of sand
109	111	Clay, dark green, phosphatic, with small layers of sand
114	116	Clay, dark green, stiff, dry
119	121	Clay, dark green, stiff, dry
124	126	Clay, dark green, stiff, dry
129	131	Clay, dark green, stiff, dry
134	136	Clay, dark green, stiff, dry
139	141	Sand, greenish gray, heavy minerals
144	146	Clay, dark green, partially indurated, phosphate specs

Lithologic Description

Site: Blue Cypress

Test Borehole: IR0974

Samples Described By: John Segó

From (ft)	To (ft)	Hammer Blow Counts	Lithology
0	59	NA	No samples collected
59	61	4/4/4/5	Shell with med-fine sand and clay, gray, and heavy minerals
64	66	8/15/8/17	Shell with med-fine sand, gray, and heavy minerals
69	71	7/13/15/18	SAA
74	76	4/6/9/12	Shell with fine sand, silt, and clay, gray, indurated zones; trace hardpan
79	81	4/6/8/12	Shell with fine sand, silt, and trace clay, gray

Lithologic Description

Site: Blue Cypress

Test Borehole: IR0968

Samples Described By: Alan Story

From (ft)	To (ft)	Lithology
1	3	Sand, brown, med-fine, with organic material
3	5	Sand, tan, med-fine
5	10	Sand, tan, med-coarse, with clay, gray
10	12	Clay, blue-gray; with trace shell
12	15	Shell with clay, blue-green
15	20	Shell
20	30	Shell with clay, blue-green
30	37	Shell with clay, green
37	57	Clay, green, with trace shell
57	60	Clay, green, with sandstone, light gray
60	79	Clay, blue, with large shell fragments
79	98	Clay, green, with trace shell and phosphate
98	148	Clay, green, with trace phosphate
148	172	Clay, green, with phosphate
172	248	Clay, green, with sandstone
248	256	Clay, green
256	290	Clay, green, stiff
290	292	Chert, light green
292	305	Limestone, creme; fossiliferous (<i>lepidocyclina</i>)
305	340	Limestone, tan, fossiliferous (<i>lepidocyclina</i>)
340	354	Limestone, tan
354	360	Limestone, dark tan, indurated
360	370	Limestone, light tan, poorly indurated
370	372	Limestone, gray-black, well indurated
372	400	Limestone, white
400	435	Limestone, light tan
435	440	Limestone, light tan, fossiliferous (<i>dictyonus</i>)