

021-140

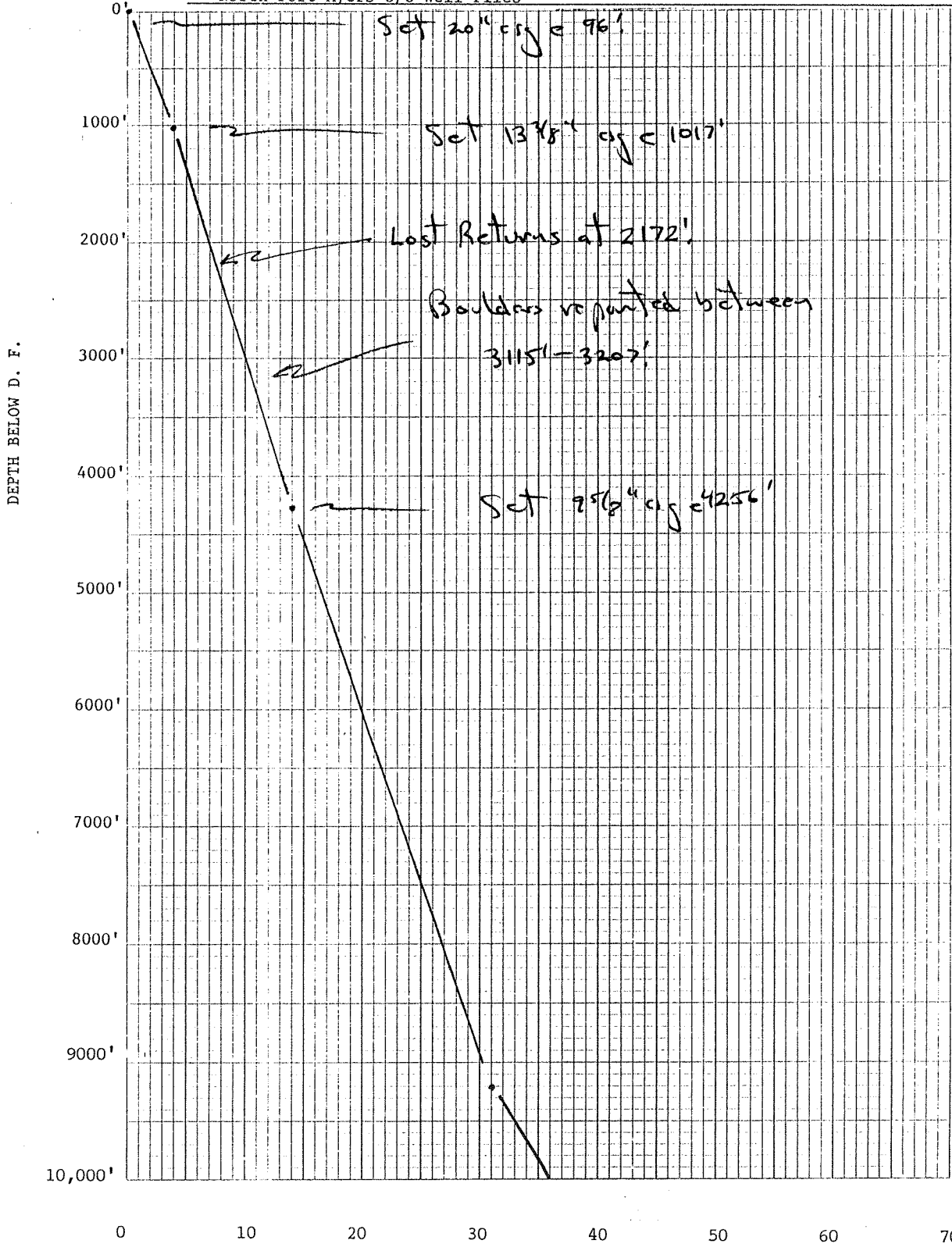
Well No. 106 [W-1977] Est. Sunniland Quad Elevation G.L. 20' D.F. 33.8' K.B.

Location 666' FEL, 1977' FNL County Collier

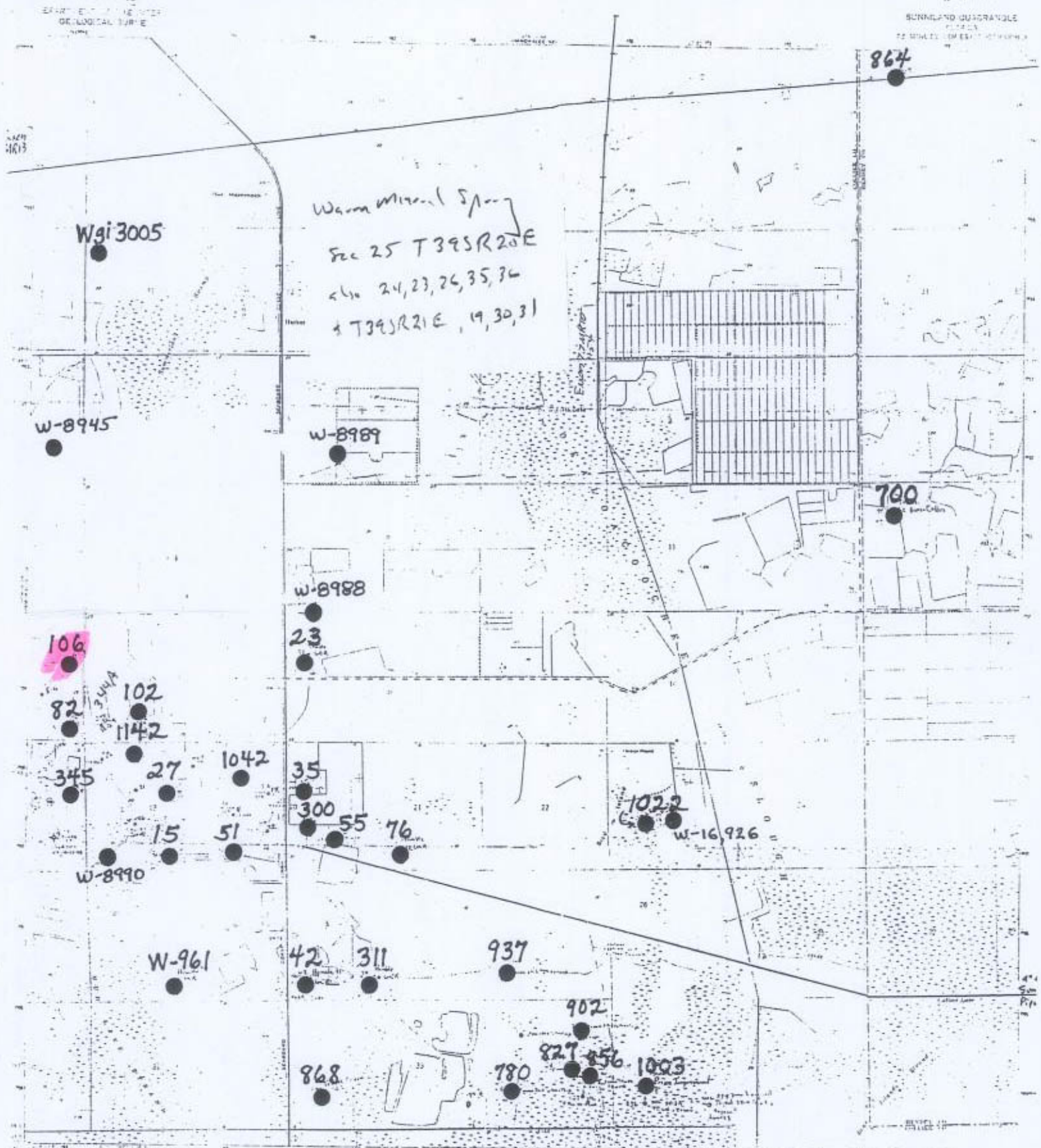
Sec. 13 T 48S R 29E TD 11,579'

Well or Owner's Name Humble B-3, Lee Tidewater Cypress

Data Source North Fort Myers O/G Well Files



DAYS DRILLED



SCALE 24000

Geological symbols and abbreviations are explained in the legend on page 10.

Copyright © 1978 by the Florida Geological Survey, Tallahassee, Florida.

Revised by the Florida Geological Survey, Tallahassee, Florida.

Florida Geological Survey, Tallahassee, Florida.

UNITED STATES GEOLOGICAL SURVEY

FLORIDA

25 MILES TO EAST OF TAMPA

Well Location Map - Sunniland Quad

SUNNILAND REPRODUCTION

Location of Well: **SE NE**
 COMPANY: **HUMBLE OIL & REFIN.**
 WELL: **LEE TIDEWATER**
 FIELD: **SUNNILAND 13-1**
 LOCATION: **T48S R29E**
 COUNTY: **COLLIER** STATE: **FLORIDA**
 FILING No. **W-1977**

13-1 Permit #106

Boulders reported between 2115-3207 DF

SP Am 16 Am 63 Lat 100-6900

Run No.	1	2	3	4	5	6
Date	4-10-49	4-10-49	4-10-49	4-10-49	4-10-49	4-10-49
Four Reading	1002	1002	1002	1002	1002	1002
Log Reading	1014	1014	1014	1014	1014	1014
Footage Measured	427	427	427	427	427	427
Cap Shoe Section	1000	1000	1000	1000	1000	1000
Cap Shoe Differ.	1000	1000	1000	1000	1000	1000
Max. Depth Reached	11570	11570	11570	11570	11570	11570
Barrel Differ.	11570	11570	11570	11570	11570	11570
Depth Differ.	11570	11570	11570	11570	11570	11570
Head Pressure	11570	11570	11570	11570	11570	11570
Density	1.0	1.0	1.0	1.0	1.0	1.0
Viscosity	1.0	1.0	1.0	1.0	1.0	1.0
Resistivity	1.0	1.0	1.0	1.0	1.0	1.0
Resistivity Int.	1.0	1.0	1.0	1.0	1.0	1.0
pH	1.0	1.0	1.0	1.0	1.0	1.0
Water Temp.	1.0	1.0	1.0	1.0	1.0	1.0
Max. Temp. 7'	1.0	1.0	1.0	1.0	1.0	1.0
Spuds - AM	1.0	1.0	1.0	1.0	1.0	1.0
AC	1.0	1.0	1.0	1.0	1.0	1.0
E.S. Rig Time	1.0	1.0	1.0	1.0	1.0	1.0
Track No.	1.0	1.0	1.0	1.0	1.0	1.0
Recorded By	1.0	1.0	1.0	1.0	1.0	1.0
Witnessed By	1.0	1.0	1.0	1.0	1.0	1.0

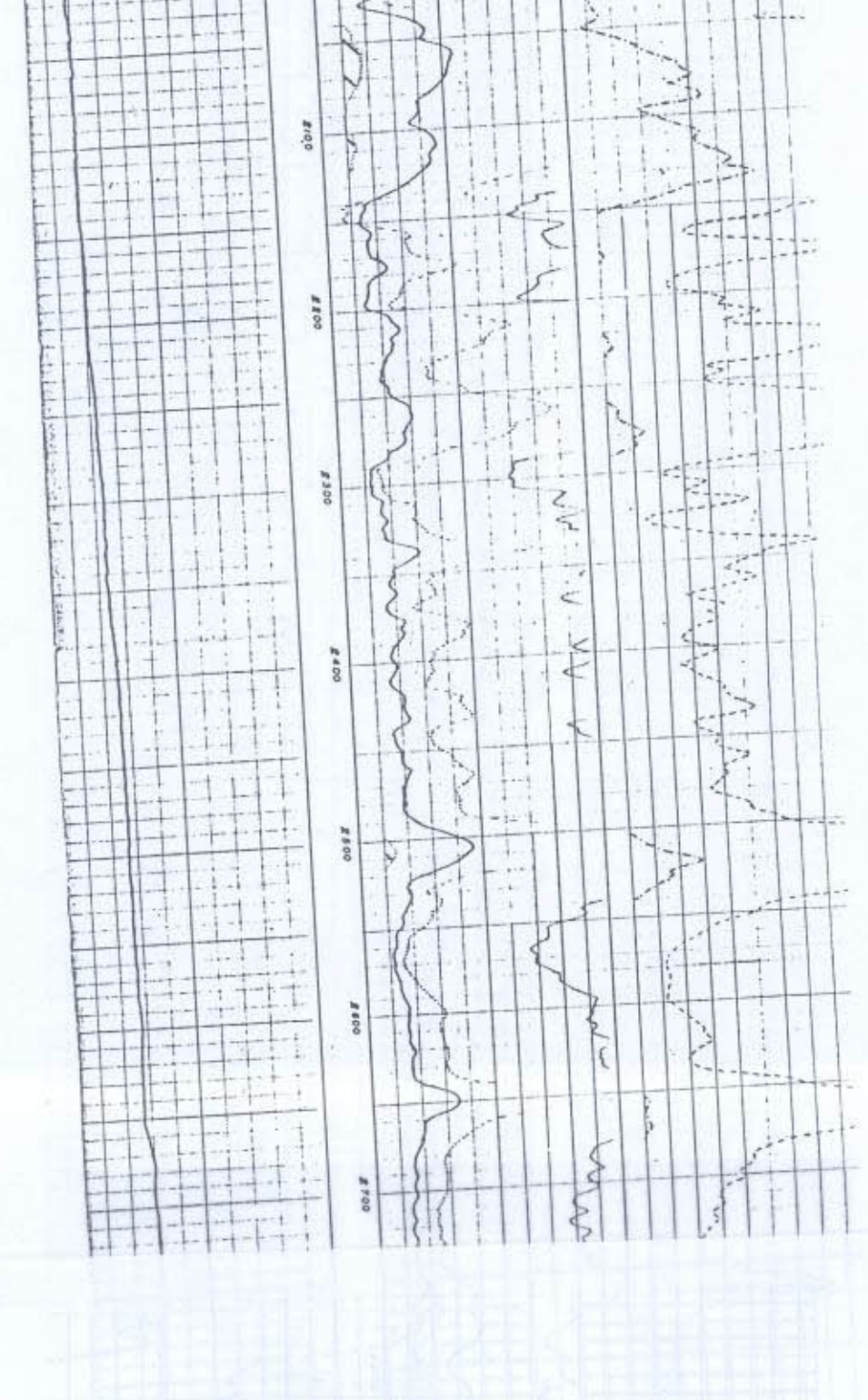
REMARKS

RUN 6 IS A RE-LOG OF 3, 4, AND 5 AND ON TO TOTAL DEPTH. WELD CONTENTS FOR RUN 6: CAUSTIC-QUABRACHO-STARCH-PENTONITE-HYDRELL.

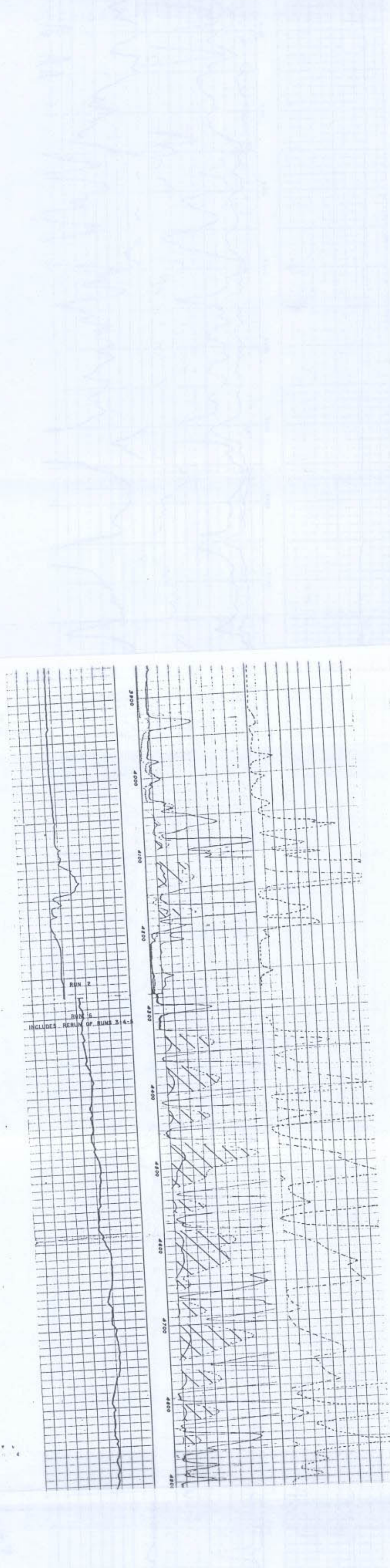
SEC 13-T48S-R29E
Containing SE NE
4 1/4 Secs NW of
A RILEY REPRODUCTION
 Reg. No. 579892

SPONTANEOUS-POTENTIAL (millivolts) vs **RESISTIVITY** (ohms. m./m.)

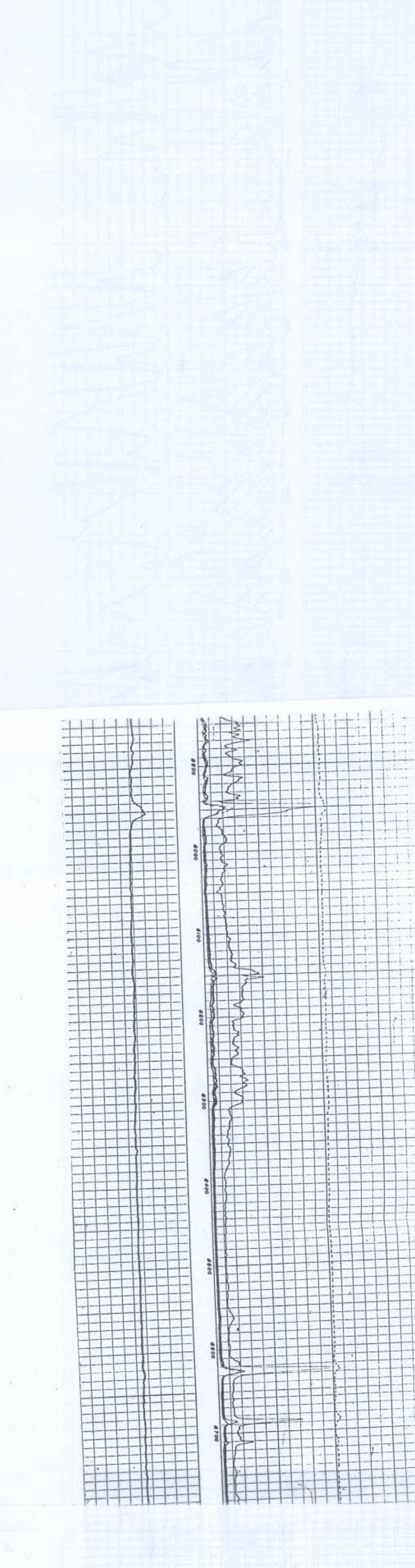
SELF POTENTIAL vs **NORMAL RESISTIVITIES** vs **LATERAL RESISTIVITY**



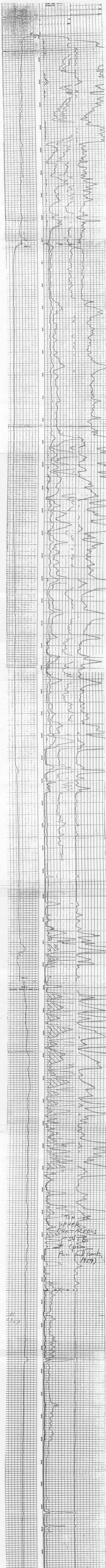
6019
1982-9
SUNNILAND REPRODUCTION



#106
W-1977



#106



Top of
UPPER
CRISTACIOUS
5458
(per
Parr and Banks,
1959)

INCLUDE REMAINDER OF SUNN 314

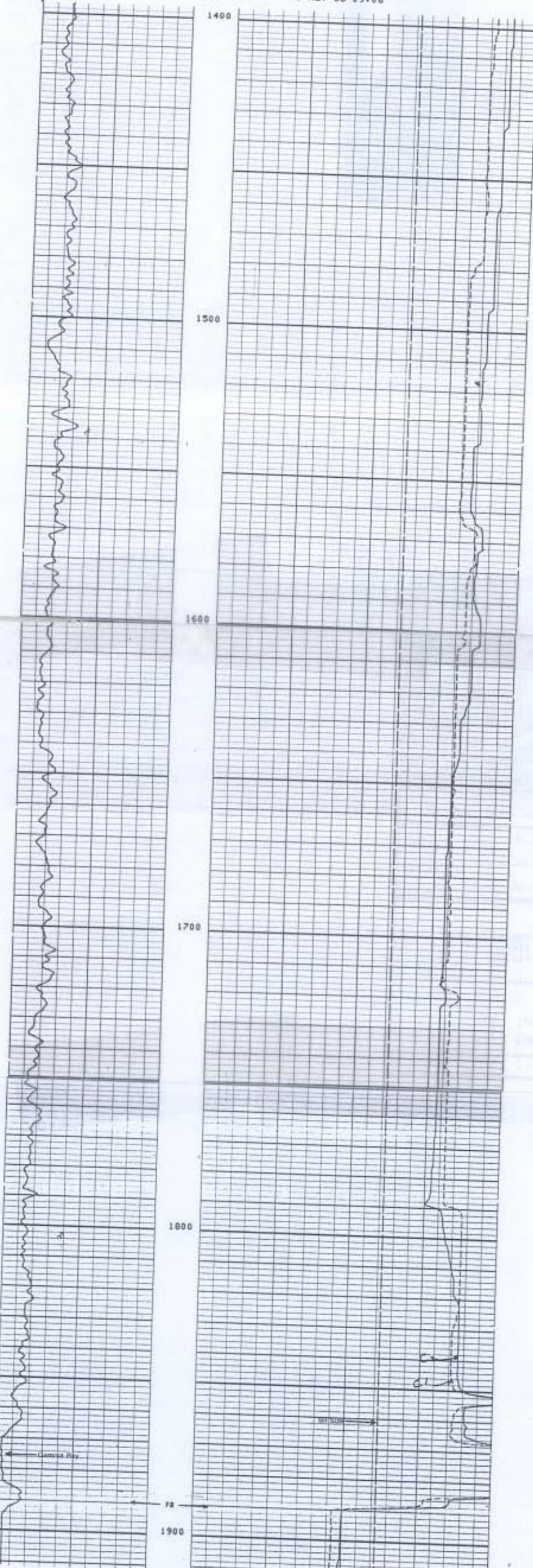
ALL INTERPRETATIONS ARE OPINIONS BASED ON INFERENCES FROM ELECTRICAL OR OTHER MEASUREMENTS AND WE CANNOT, AND DO NOT GUARANTEE THE ACCURACY OR CORRECTNESS OF ANY INTERPRETATIONS, AND WE SHALL NOT, EXCEPT IN THE CASE OF GROSS OR WILLFUL NEGLIGENCE ON OUR PART, BE LIABLE OR RESPONSIBLE FOR ANY LOSS, COSTS, DAMAGES OR EXPENSES INCURRED OR SUSTAINED BY ANYONE RESULTING FROM ANY INTERPRETATION MADE BY ANY OF OUR OFFICERS, AGENTS OR EMPLOYEES. THESE INTERPRETATIONS ARE ALSO SUBJECT TO OUR GENERAL TERMS AND CONDITIONS AS SET OUT IN OUR CURRENT PRICE SCHEDULE.

FILE 7 06-NOV-86 09:12

HOLE VOLUME = 786.744 F3
FROM 1900.0 TO 1400.0 FEET

0.0	BS (IN)	20.000
0.0	C2 (IN)	20.000
0.0	C1 (IN)	20.000
0.0	GR (GAPI)	100.00

FILE 6 06-NOV-86 09:08



FILE 6 06-NOV-86 08:55

0.0	BS (IN)	20.000
0.0	C2 (IN)	20.000
0.0	C1 (IN)	20.000
0.0	GR (GAPI)	100.00

SENSOR MEASURE POINT TO TOOL ZERO

AZIM 0.0 FEET	GR 16.0 FEET
DEVI 0.0 FEET	RB 0.0 FEET
C2 0.0 FEET	C1 0.0 FEET
TENS 0.0 FEET	

PARAMETERS

NAME	VALUE	UNIT	NAME	VALUE	UNIT
MCT	72		PVUM	1.00000	
BS	12.2500	IN	BMS	OPEN	

HOLE VOLUME = 784.573 F3
FROM 1900.0 TO 1400.0 FEET

P106 LAS

P106A

GR
C1
C2

100/
6900

