

Belle Meade Quad

Well No. 130 (W-2420) Elevation G.L. ±9' D.F. 25' K.B.

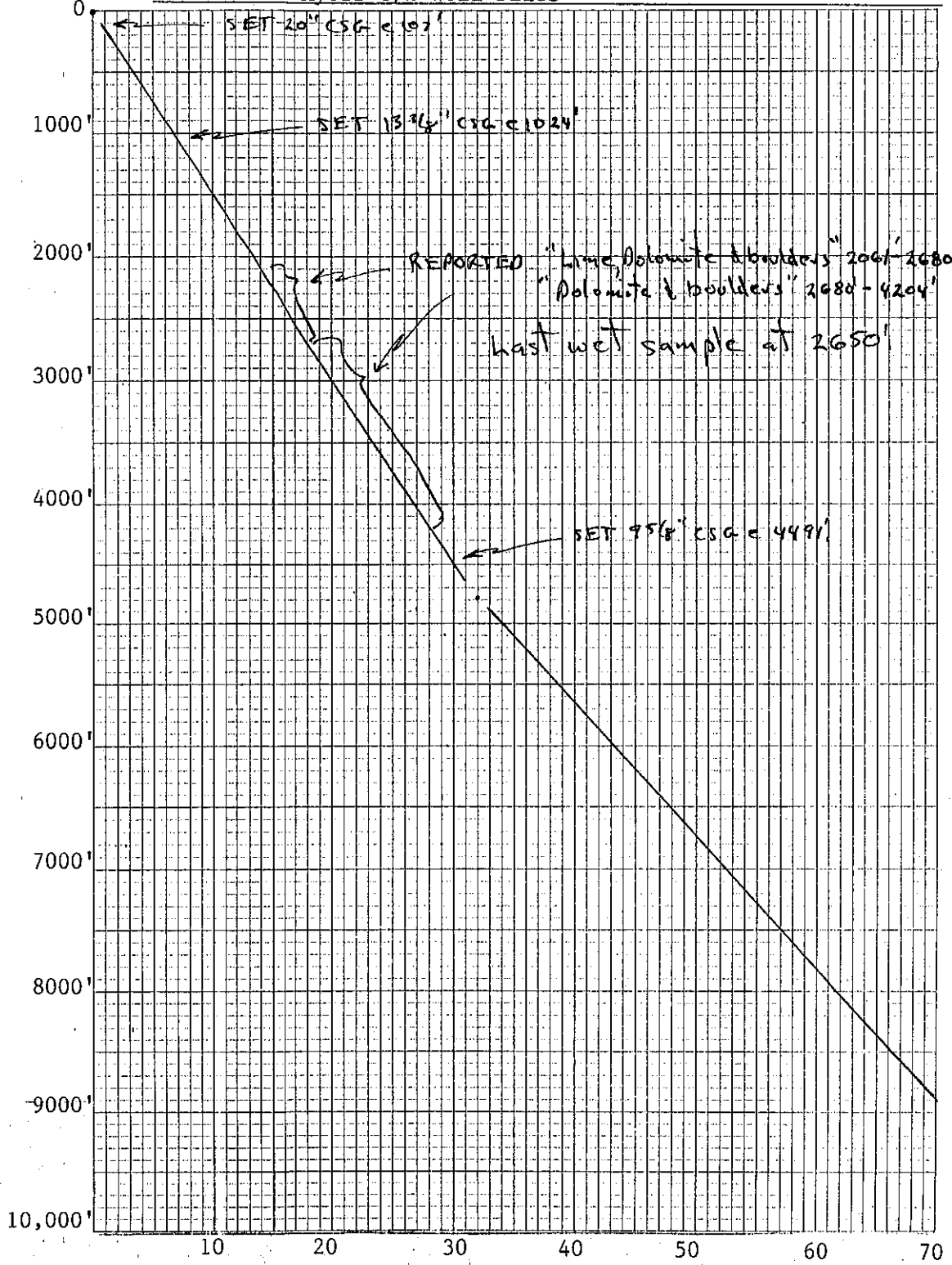
Location Center of SENW County Collier

SE NW Sec. 27 T 50S R 26E TD 12,600'

Well or Owner's Name Humble #1 Collier Corporation

Data Source North Fort Myers O/G Well Files

DEPTH BELOW D. F.



DAYS DRILLING

#130, W-2420, Humble #1 Collier Corp.  
Center of SENW, Sec. 27, T50S R26E  
Collier County (Belle Meade Quad)  
GL ±9', DF 25', Spud 5/2/51, P&A 9/1/51

(Lith log from R.S. Peacock, MS Thesis Dec. 1981, FSU, "The Post-Eocene Stratigraphy of Southern Collier County, Florida")

<u>Depth (Feet)</u>	<u>Description</u>
0-30	Limestone, white, hard, moldic, minor sand and fossils
30-60	Calcarenite, grayish white, hard; limestone of above
60-115	Limestone, white hard, sandy
115-145	Silt, clayey, green, minor quartz; calcareous sandstone, minor, light grayish green
145-175	Quartz, sand through granule; sandy calcilutite, minor
175-205	Silt, clayey, green, sandy, plastic
205-235	Silt, clayey, olive green, plastic, minor quartz and phosphorite; quartz, and phosphorite, minor, sand through granule
235-265	Silt, clayey, olive green, plastic, eight percent phosphorite
265-385	Limestone, white, minor phosphorite; minor calcarenite, grayish white
385-415	Calcernite, white to beige, minor quartz and phosphorite; minor limestone
415-535	Limestone, white, hard, minor phosphorite
535-595	Limestone, as above; calcarenite, minor, five percent phosphorite; Dolomite, minor, beige
595-625	Limestone, white, hard, dense, fossils include <u>Miogypsina sp.</u>
625-685	Limestone, white; Dolomite, minor, grayish beige
685-745	Dolomite, beige

#130, W-2420  
(Belle Meade Quad)

745-805	Limestone, white, minor to sandy, numerous forams
805-955	Limestone, as above; Calcarenite, grayish white, minor quartz, numerous forams
955-1030	Limestone, beige, hard, very numerous forams and ostracods
1030-1090	Dolomite, beige, forams
1090-1210	Dolomite, as above; Calcarenite
1210-1240	Dolomite, tan
1240-1270	Limestone, grayish white
1270-1290	No sample
1290-1300	Dolomite, grayish white
1300-1330	Limestone, white, hard, contains <u>Lepidocyclina sp.</u> and <u>Gypsina globosa</u>

W-2420, Belle Meade Quad  
130 Humble #1 Collier Company  
Center SE NW, Sec. 27, T50S R26E, Collier County  
GL ±9' - DF 25' - Spud 5/2/51 - P&A 9/1/51

Brief Geologic Log by C. V. Cook 10/94

<u>Depth</u>	<u>Description</u>
1810-1840	V p o, v chalky Ls; some part rexal
1840-1870	Ls as above; some granular; rare <u>Dictyoconus cookei</u>
1870-1900	V p o, chalky, part rexal, granular fos Ls, common <u>D. cookei</u> ; a tr of brn carb matter
1900-1930	Ls as above, 10% v p o, f g-med xln Dol, 5% carb matter; rare <u>D. cookei</u>
1930-1990	V p o, chalky-micritic, part dol-part rexal Ls; 10% carb matter
1990-2020	Ls as above; 20% w/aggregates of Dol rhombs in matrix; 5% carb matter
2020-2050	Sample missing
2050-2080	V p o, granular, part rexal fos Ls; minor <u>D. cookei</u>
2080-2110	Sample missing
2110-2140	V p o, granular, part rexal fos Ls, 30% w/Dol rhombs in matrix; common <u>Dictyoconus americanus</u>
2140-2170	As above; 10% Ls w/Dol rhombs in matrix
2170-2230	Samples missing
2230-2260	V p o, granular, part rexal fos Ls, 50% aggregates of mod yel/brn, f-med xln Dol and common <u>D. americanus</u>
2260-2290	Ls, Dol and fos as above; Dol aggregates are grayish orange
2290-2320	60% Ls as above, 40% grayish orange-mod yel/brn Dol as above and minor <u>D. americanus</u>
2320-2350	50% Ls and 50% Dol as above; rare <u>D. americanus</u>
2350-2380	60% Dol and 40% chalky Ls as above; rare <u>D. americanus</u>
2380-2410	Ls and 10% Dol as above
2410-2440	V p o, granular, part rexal, fos Ls, some w/f-med xln Dol in matrix; rare <u>D. americanus</u>
2440-2500	As above w/5% carb matter
2500-2530	Ls as above, some w/Dol rhombs in matrix; tr of carb matter

W-2420, Belle Meade Quad  
130 Humble #1 Collier Company (con't)

<u>Depth</u>	<u>Description</u>
2530-2560	V p o, granular-micritic, part rexal Ls and 10% grayish orange, f-med xln Dol
2560-2590	Ls and 30% med-v crse xln Dol as above
2590-2620	V p o-med gray, f-med xln Dol and 30% v p o, granular, part rexal Ls
2620-2650	Ls as above and 5% Dol as above
2650-5990	Samples missing

130

09-021-1007-7

W-2420, Belle Meade Quad  
 #130, Humble #1 Collier Company  
 Center SENW Sec. 27, T50S R26E  
 Collier County  
 Spud 5/2/51 PA 9/1/51  
 DF 25' - GL ±9'

**SCHLUMBERGER WELL SURVEYING CORPORATION**  
 HOUSTON, TEXAS



*Electrical Log*

COUNTY COLIER 27044 FIELD or WILDCAT LOCATION SEC. 27-50S-26E WELL COLIER CORP. #1 COMPANY COMPOSITE COMPANY HUMBLE OIL & REF. CO.	COMPANY	HUMBLE OIL AND REFINING COMPANY	Location of Well
	WELL	COLLIER CORP. #1	CENTER SE NW.
	FIELD	WILDCAT	Ground elev.
	LOCATION	SEC. 27-50S-26E	Surface top. 9'
	COUNTY	COLLIER	Elevation: D.F.: 25'
	STATE	FLORIDA	K.B.: or G.I.:
			FILING No.

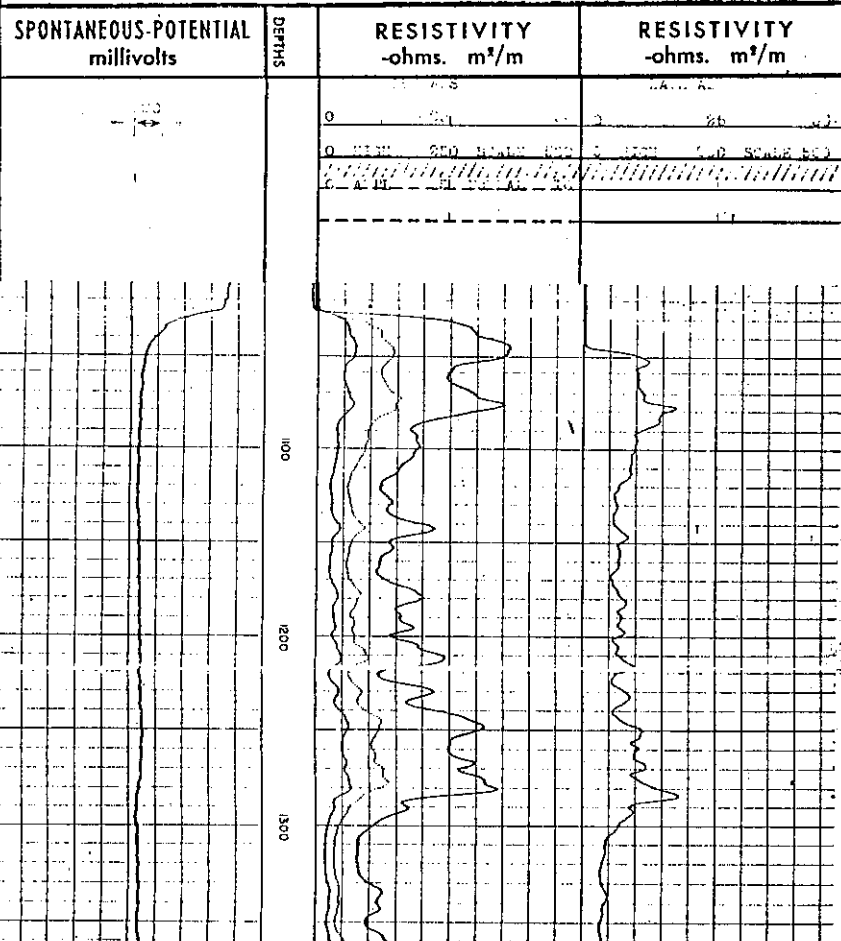
Lith log 12/31/64 by C. C. Chen  
 and brief lith log 8/94 by  
 R. S. Caughey (2380-2650')

RUN No.	ONE	TWO	THREE		
Date	6/3/51	7/27/51	8/25/51		
First Reading	4791	10624	12516		
Last Reading	1025	4791	10624		
Feet Measured	2766	5833	1892		
Csg. Schlum.	1025	4492	4492		
Csg. Driller	1024	4491	4491		
Depth Reached	4791	10624	12516		
Bottom Driller	4906	10628	12516		
Depth Datum	ONE FOOT ABOVE ROTARY				
Mud Nat.	CLEAR WATER				
" Density	8.4				
" Viscosity					
" Resist.	@ °F .4 @ 88 °F	.6 @ 82 °F	@ °F	@ °F	@ °F
" Res. BHT	@ °F .22 @ 72 °F	.22 @ 224 °F	@ °F	@ °F	@ °F
" pH	@ °F	@ °F	@ °F	@ °F	@ °F
" Wtr. Loss	CC 30 min.	CC 30 min.	CC 30 min.	CC 30 min.	CC 30 min.
Max. Temp. °F	114	172	224		
Bit Size	12 1/2"	8 5/8"	8 1/2"		
Spchs.—AM	16"	16"	16"		
A	64"	64"	64"		
AO	18 1/8"	18 1/8"	18 1/8"		
Opr. Rig Time	1 HOUR	4 HOURS	2 HOURS		
Truck No.	534 LAUREL	514 NATCHEZ	545 LAUREL		
Recorded By	KREIDER	BUSH	KREIDER		
Witness By	CHAMPION	COX	CHAMPION		

REMARKS

*Permit # 130*

0-1085 - Miocene and younger



1085-1240 - Fos Ls, fragmental, biosparite, lt brn/brn

1240-1290 - Calcitic dolomite, v f xalline, brn, dense w/gray/brn chert frags

OCALA

1290-1360 - Highly fos, Ls; porous, soft, v lt brn, chalky, forams rare; a few large foramic frags

1360-1630 - Highly fos Ls; fragmental, lt brn, well cmted, large forams-Lepidocyclina Nummulities, etc common & abundant

OCALA

1290-1360 - Highly fos Ls, porous, soft v lt brn, chalky

1360-1630 - Highly fossiliferous Ls, fragmental, lt brn, well cmtd, large forams - Lepidocyclina, Nummulities etc., common & abundant

1630-1650 - Ls as above w/rexal fossil

AVON PARK

1650-1660 - Calcitic dolomite, finely xalline

1660-1700 Dolomite, fossilifer Ls, dol rhombs in Ls matrix

1700-1970 - Highly fos Ls, fragmental biosparite, lt brn/brn forams as Coskinolina, Lituonella, etc, common; fossil are rexal

1970-2005 - Dolomite, v f xalline, dense, dark brown

2005-2340 - Fos Ls, fragmental, microxalline, brn, D. americanus, Cosk, Lituonella, etc. common

2340-2380 - Dol Ls, fos, some dol (dk brn) rhombs in Ls matrix

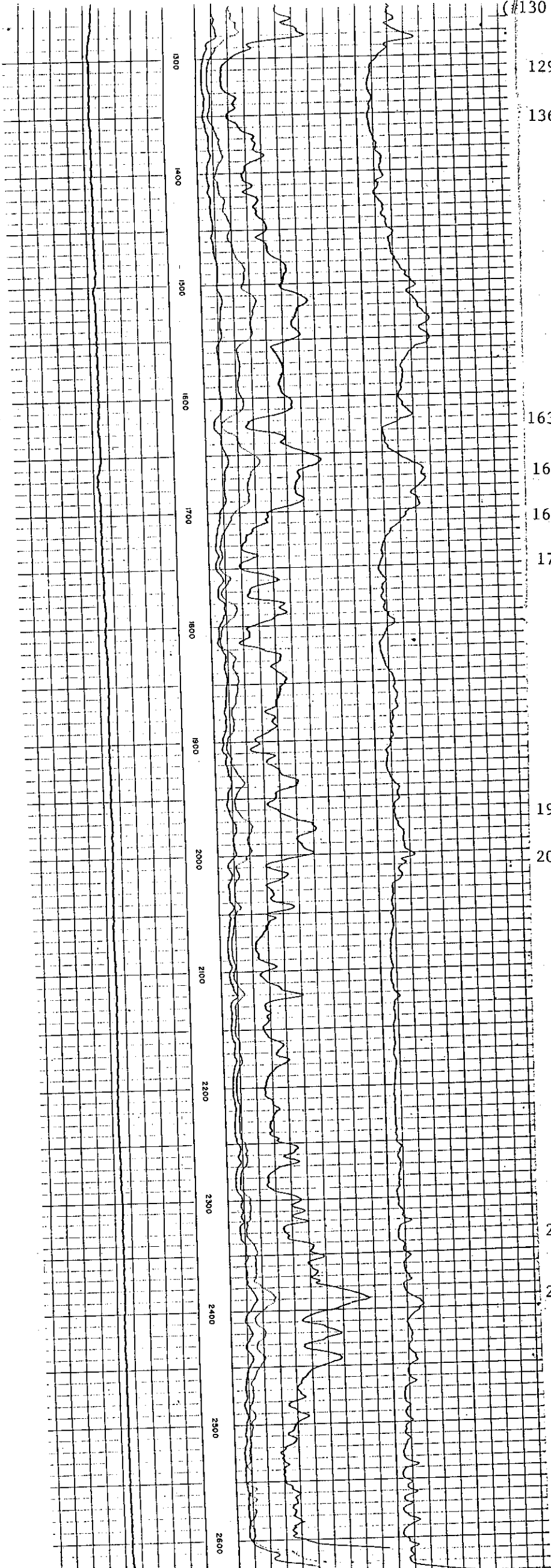
2380-2400 - Calcitic dol, f-m xalline, dk brn to brn/b

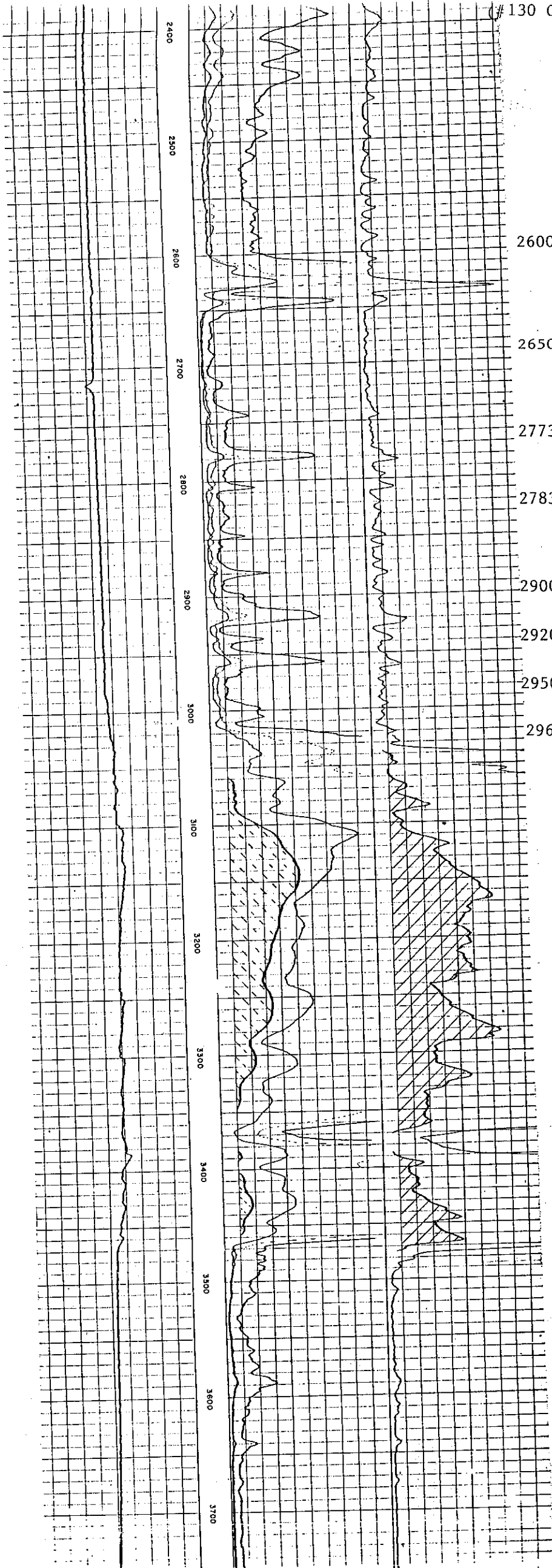
2400-2450 - Dol Ls, fos, dk brn

2450-2530 - Fos Ls, finely fragmental, porous

2530-2560 - Ls as above, 10-20% dol, lt brn thru grayish brn, f-coarse xalline

2560-90 - Ls as above, some dolomit 40% dol, most as aggregates of dol rhombs, some mod brn, f-m xalline





- 2600-2650 - Dolomite, v f-f xalline, dk brn to brn, blackish, dense, carbonaceous matter; abundant dol rhombs gray to translucent
- 2650-2773 - Fos Ls, dense, lt gray/brn
- 2773-2783 - Dol, v f-m xalline, v dk brn, dense, carbonaceous matter
- 2783-2900 - Fos Ls, fragmental, dense, gray/brn, D. americanus, fos rare
- 2900-2920 - Dol, f-m xalline, dense brn/bl
- 2920-2950 - Fos Ls, fragmental, dense microxalline, lt brn
- 2950-2960 - Dol, m xalline, dk brn, rhombs
- 2960-2990 - Fos Ls as above



