

Executive Summary
ROMP - Dundee Ranch
One Monitor Well

Location - The ROMP Dundee Ranch monitor well is located approximately .25 mile south of Lutz-Lake Fern Road and 4 miles west of U.S. 41 on the Dundee Ranch in Hillsborough County. The site is in Section 9, Township 27 South, Range 18 East and at latitude 28°08'01", longitude 82°31'04".

Site Easement - The site was obtained from Ralph and Gwyneth Cordiner on November 7, 1973 for the sum of one dollar. The Easement which has a 50 year limitation is 8 feet by 12 feet. A Temporary Construction Easement was also obtained which was 30 feet by 60 feet. The easement is recorded in O.R. Book 2922 Pages 590 through 593 at the Hillsborough County Courthouse.

Geology - The Dundee Ranch site is located on the Penholoway terrace at an elevation of approximately 61 feet above mean sea level (MSL). All geologic data was obtained from drill cuttings from land surface to 693 feet below land surface datum (LSD). The general geology of this site is as follows:

0-41'	Sand and clay
41'-136'	Tampa limestone
136'-341'	Suwannee limestone
341'-471'	Ocala group
471'-693'	Avon Park limestone

Hydrogeology - There is little if any information available in the files on the geohydrology of this site. The geophysical logs indicate that the Tampa and Suwannee limestones are soft and crumbly and therefore probably not a very high water producer. Since the Ocala is considered to

be a confiner in this area, it also is probably a poor water producer at this site. The temperature log shows a rise of 3 degrees in the temperature from the top to over 200 feet below the contact of the Ocala and Avon Park. This would indicate that a larger groundwater flow exists in this area and that the Avon Park is probably the best water producer in this area. The caliper log also indicates that the Avon Park is a harder formation, and therefore is a more consistent formation and water would probably flow more freely.

Well Construction - This well was constructed by A. O. Dunlap and Sons between December 6, 1973 and January 18, 1974 at a cost of \$5,009 or \$7.23 per foot.

The well was constructed by using 8 inch steel well casing which was grouted in place and then drilled out to 693 feet below LSD.

Geophysical Logs - Self-potential, caliper, gamma, and temperature logs were recorded on this well.

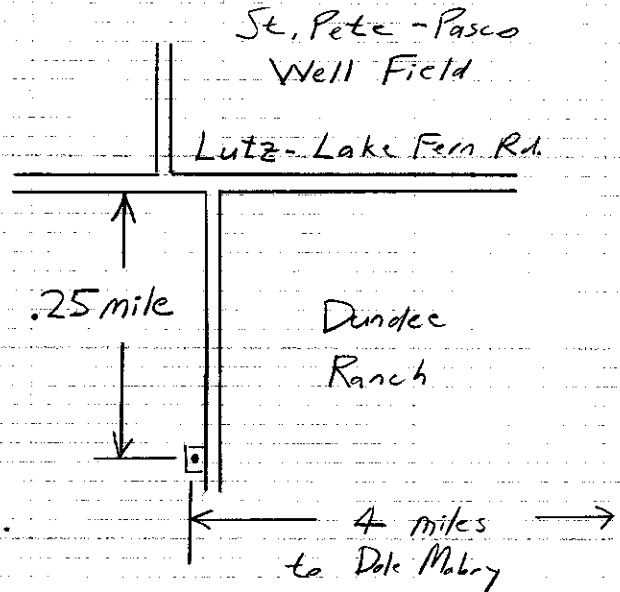
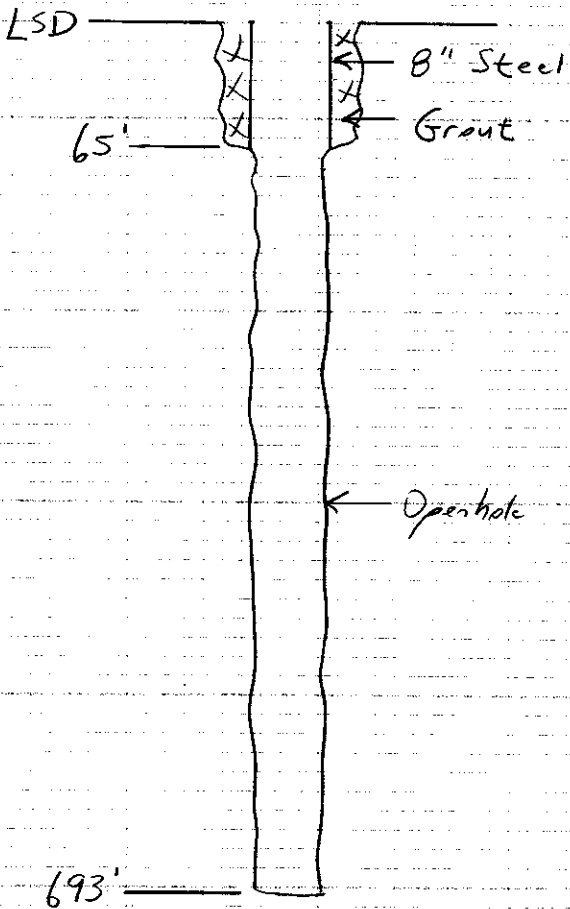
Type of Monitor - This well is designed to monitor the Floridan Aquifer from the Tampa through the Avon Park limestones.

Water Quality - Apparently no water quality samples were collected at this site.

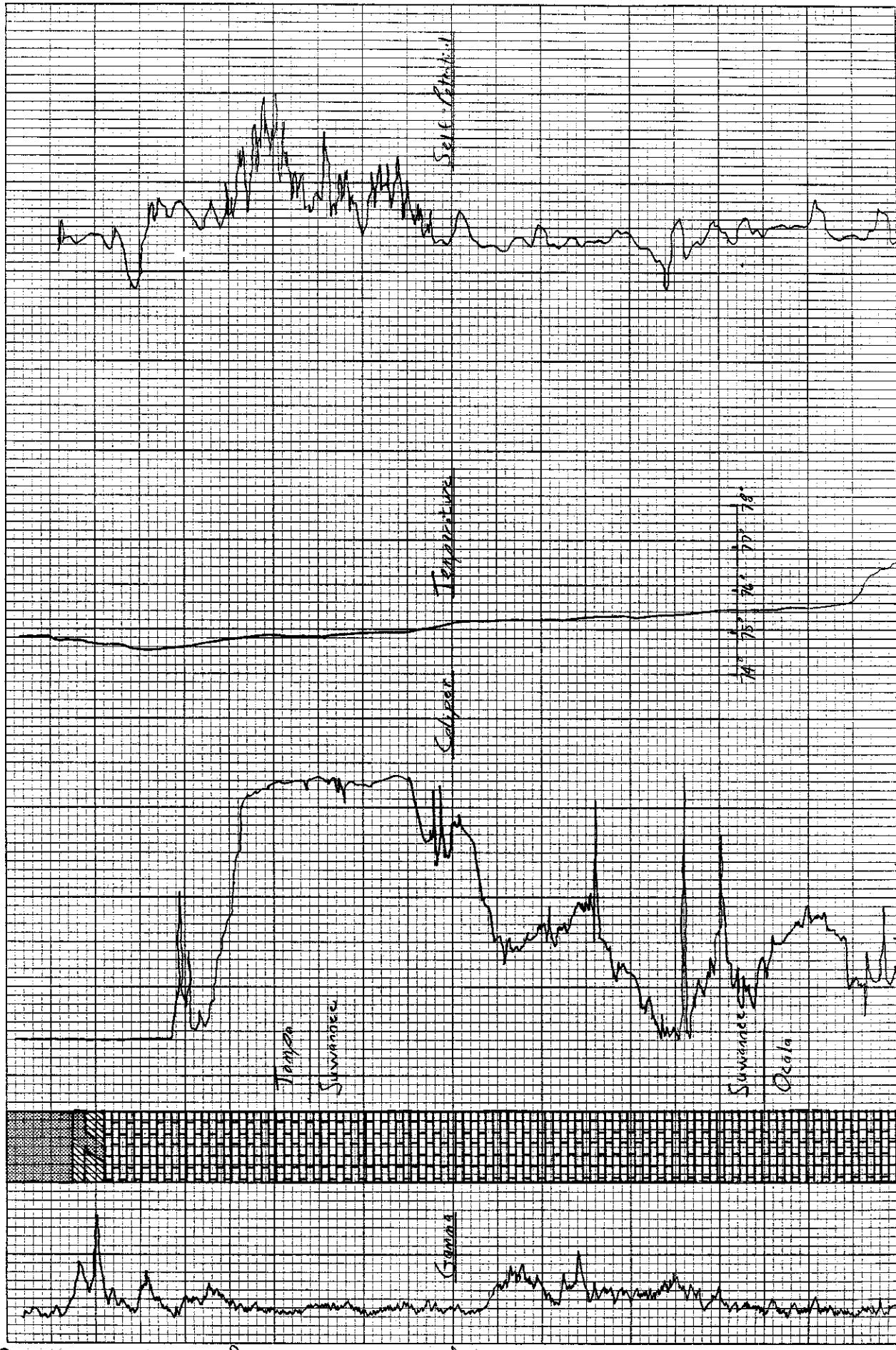
U.S.G.S. Notification - It appears as though the U.S.G.S. was notified during February, 1976, that this well was complete and ready for monitoring.

As Built
Well Diagram

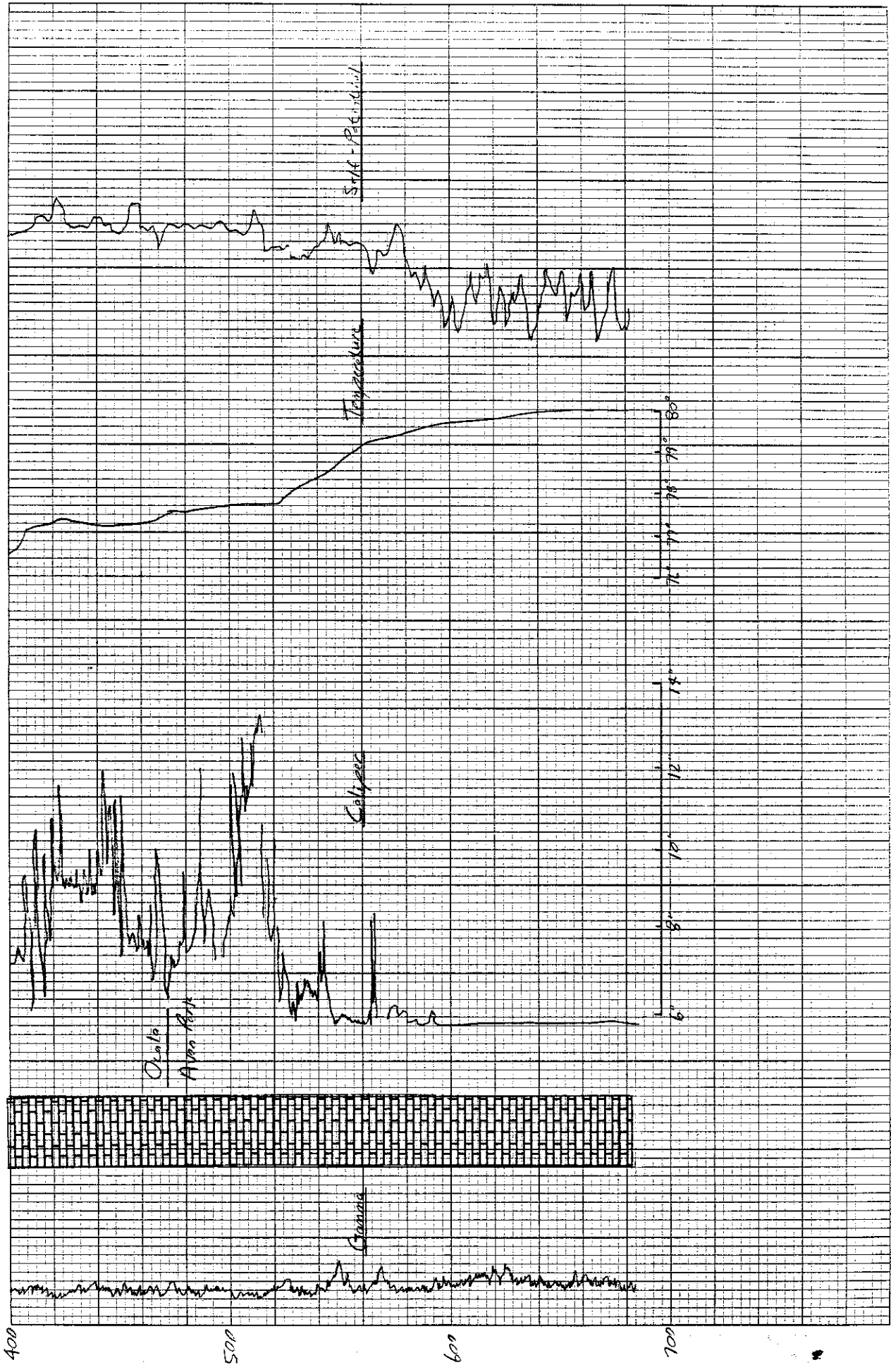
Site Location



S9, T27, R18
Hillsborough Co.



Dundee Ranch



Dundee Ranch