

043-29

W-5406
WGI-42S-33E-18
Joe Banks

OWNER : Coastal Petroleum, MH3
LOCATION : Sec. 18, T42S- R33E
FARM NAME : State Lease 248 & Ferrell MH3
COUNTY : Glades
ELEVATION : 18' DF est
DRILLER : Joy Mfg. Co.
STARTED : 11/16/59
COMPLETED : 11/24/59
DEPTH : 1,000'
CASING :
USE : Mineral Exploration
REMARKS : 101 samples from 2-995' received in person from Wendell Roberts, Coastal Petroleum Co., wide Elect Long, Gamma Ray and additional information in library

0-40 SAND, gray to light brown, phosphatic, loose fill, shells, Bryozoa, Balanus, amphistegina, turritella

40-42 SHALE, micaceous, shell, bryozoa

42-90 SAND, light brown and gray, phosphatic, loose sand and shell, calcitic; bryozoa

90-95 SHALE, light gray, phosphatic, loose sand, calcitic, shells, bryozoa, miliolids

95-97 SAND, calcitic and loose shells, bryozoa

97-100 LIMESTONE, phosphatic, sandy, calcitic, loose shell, bryozoa

100-115 SAND, gray, micaceous, clayey, phosphatic, very fine grained, shells

115-170 SHALE, green, clayey, dolomitic, siliceous, phosphatic very fine

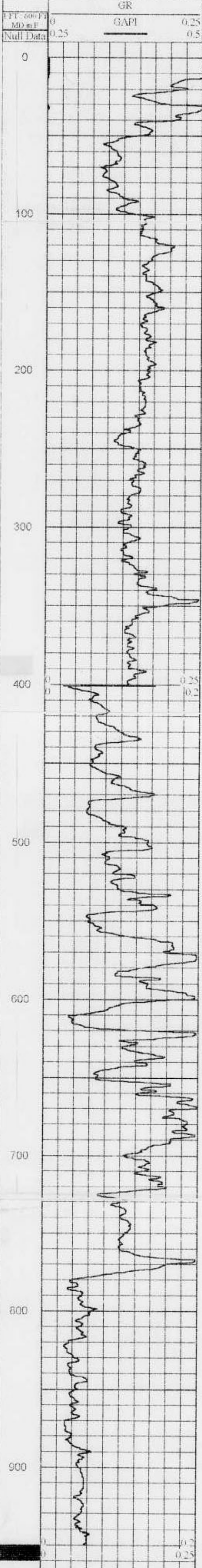
170-220 SAND, gray, clayey, dolomitic, silica, micaceous, very fine

220-230 SHALE, green, clayey, dolomitic, siliceous, very fine grain

230-255 SAND, gray to light gray, clayey, very fine silica, heavy mineral content, fossils, balanus, Nevens

255-270 SHALE, green, clayey, siliceous, micaceous, very fine grained with heavy mineral content

- 270-280 SAND, clayey, very fine grained, fossils as Nevins
- 280-290 SHALE, green, clayey, dolomitic, sand, very fine grain, micaceous, fossils, Nevins
- 290-345 SAND, clayey, heavy mica content, fine, fossils, caecids
- 345-370 SHALE, light green gray, clayey, silica, micaceous, porosity very fine
- 400-450 SHALE, green to light green-gray, clayey, dolomitic, sandy-ostracods
- 450-470 SAND, gray, clayey, dolomitic, silica, phosphatic, very fine
- 470-480 SHALE, green, clay, dolomitic, sand, phosphatic, porosity very fine
- 480-510 SHALE, gray, clay, dolomitic, sand, calcitic, phosphate pebbles, very fine, fossiliferous, Bryozoa
- 510-520 SAND, white (cave?) dolomitic Clay, silica with heavy mineral content, calcitic, phosphate pebbles, fossiliferous, bryozoa
- 520-540 SHALE, gray, clayey, dolomitic, calcitic, silica, few phosphate pebbles; bryozoa and small forams
- 540-575 LIMESTONE, white to gray, clayey, dolomitic, silica, calcitic, few phosphate pebbles, very fine, small camerina
- 575-600 SAND, dolomitic, siliceous, calcitic, phosphate pebbles
- 600-640 SHALE, clayey, dolomitic, silica, very fine grained, densely cemented, phosphate pebbles
- 640-700 LIMESTONE, white to gray to white, sandy calcitic, phosphate pebbles, densely cemented, very fine grained
- 700-720 DOLOMITE, brown, clayey, calcitic, densely cemented
- 720-740 SHALE, clayey, dolomitic, silica, calcitic, very fine, phosphate pebbles
- 740-755 DOLOMITE, clayey silica, dolomitic phosphate pebbles, very fine
- su? 755-780 SAND, clayey, dolomitic, siliceous, fine, phosphate pebbles
- su 780-800 LIMESTONE, white, calcite, dense, cemented
- oc? 800-1000 LIMESTONE, white to light brown, calcite and shells, dense, cemented in part, fossiliferous, ostracods; Lepidocyclinas, abundant Leps., gypsina, Operculinoides
- 800-1000 Very poor samples



Company (Owner) Coastal Petroleum Company

County Glades

Well No. 3 State & Parrall

G1-1 W-5406

Location NW 1/4 sec. 18 T. 42 N. R. 33 E.

Electric log by Range Observers Barry

Depth from Derrick Floor Gamma 900 99'

Depth reached Elec. log Casing top 401'

Water level 11' 10" above base

Yield Flow G.M. Pump G.M. meter, rept. est. Use: Gen. Serv. P.S. 88

Quality Taste 99 Test, edn. color

Remarks Gamma Ray (900-15); Sensitivity 900-402 at 0.02 MR/H 402-15 at 0.025 MR/H

Time constant -10 sec. Log. speed 780 feet/hour; log scale -10.

Date 11-24-59

043-29

Logging scale 20 mm/inch

Depth Resistance 1.10.25 ohms/foot

