

043-25

W-5436
WG1-42S-32E-11
Joe Banks

OWNER : Coastal Petroleum Co.
LOCATION : Sec. 11, T42S, R32E
FARM NAME : A. C. L., MH # 13
COUNTY : Glades
ELEVATION : 16' DF; 14½' Grd.
DRILLER :
STARTED : 12/10/59
COMPLETED : 12/12/59
DEPTH : 1,021'
CASING :
YIELD :
USE : Mineral exploration tests
REMARKS : 60 samples from 0-1,021' received
in person. Wodcp Elect Log
Gamma Ray

0-5 LIMESTONE, yellow, sandy, clay, calcitic.
5-15 SAND, light gray, calcitic, very finely cemented.
15-60 SAND, calcitic, partly cemented.
60-70 LIMESTONE, light yellow-brown.
70-120 SAND, very light brown, calcitic, partly cemented, red quartz grains.
120-150 CLAY, light brown-yellow and gray, sand, calcitic, finely cemented,
few re quartz grains, few heavies, few Balanus sp.
150-210 Same as above, very fine, few red quartz grains, increase in heavies.
210-290 Same as above.
290-320 SHALE, light green-gray, clay, sand, few heavies.
350-390 SAND, greenish-gray, clayey, few heavies.
390-410 SAND, white to light greenish-gray, clayey, very fine grain.
410-430 SAND, light gray, clayey, very fine grained.
430-480 SHALE, greenish-gray, sandy, clayey, very fine, abundant phosphate,
shark's teeth.

W-5436

- 480-490 SHALE, light gray, sandy, clayey, phosphatic, very fine.
- 490-530 SHALE, light greenish-gray, sandy, clayey, phosphatic, very fine, Ostrea sp.
- 530-560 LIMESTONE, light green-gray to white, sandy, calcitic, cemented in part, Bryozoa.
- 560-570 SHALE, light greenish-gray, clayey, sandy, phosphatic, very fine porosity, shark's teeth, pelecypod.
- 570-580 LIMESTONE, white, calcitic, sandy, clayey, phosphatic, very fine porosity, cemented in part, pelecypods.
- 580-600 SHALE, light greenish-gray, clay, sandy, calcitic, porosity very fine, cemented in part.
- 600-610 DOLOMITE, white, sand, dolomitic, as above.
- 610-615 SHALE, light greenish-gray, clayey, sandy, abundant phosphate, fine porosity.
- 615-620 DOLOMITE, clay, calcitic, sandy, phosphate, fine grained.
- 62-630 SHALE, light greenish-gray, clay sandy, very fine grained, phosphatic.
- 630-680 LIMESTONE, speckled light gray, white speckled oolites, sandy, calcitic, very finely cemented.
- 680-700 DOLOMITE° very light brown, speckled, sandy, dolomitic, phosphatic, very finely cemented in part.
- 700-710 SHALE, gray, clay, sandy, phosphatic, porous.
- 710-750 SAND, gray, clayey, phosphatic (cave?)
- 750-760 SHALE, light greenish-gray, clayey, sand, phosphatic, partly cemented.
- 760-770 SAND, gray, clayey, phosphatic (cave?)
- 770-780 SHALE, gray, sandy, phosphatic (cave?)
- 780-800 SAND, gray, clayey, as above (cave?)
- 800-810 SHALE, greenish-gray, sandy, clayey, phosphatic (cave?)
- 810-820 SAND, gray, clay, sand, phosphatic (cave?)

W-5436

- 820-850 LIMESTONE, gray, sandy, clayey, phosphatic, very fine and partially cemented.
- 850-880 Same as above, dark gray, white.
- 880-900 Same as above, green-gray, very light brown to gray.
- 900-1010 Same as above; dark green-gray, to very light brown.

Company (Owner): Coastal Petroleum Company

Well: No. 11 State & Atlantic Coast Line

G1-C

County: Glades

W-5436

Location: NE 1/4 NE 1/4 sec. 11 T. 42 N. R. 32 E.

Electric log by: Hendry Observers: Banks

Depth from: Derrick Floor Elevation: 16' ground 14.5'

Depth reached: Elec. log Gamma 960 Driller: 1021

Well size: 3 inches Casing data: 6" at 13' 3" at 401' - 468'

Water level: h. rpt. 19 above below which is ft. above below surface

Yield: Flow G.M. Pump G.M., meas. repr. est. Use: Dom. Stock, PS, RR, Ind. Ir., Obs. Other: Mineral Expl.

Quality: Temp. °F. Taste, odor, color:

Remarks: Gamma Ray: (960-10) Sensitivity: 960-10 at 02 MR/H. 190-100 at .0025 MR/H.

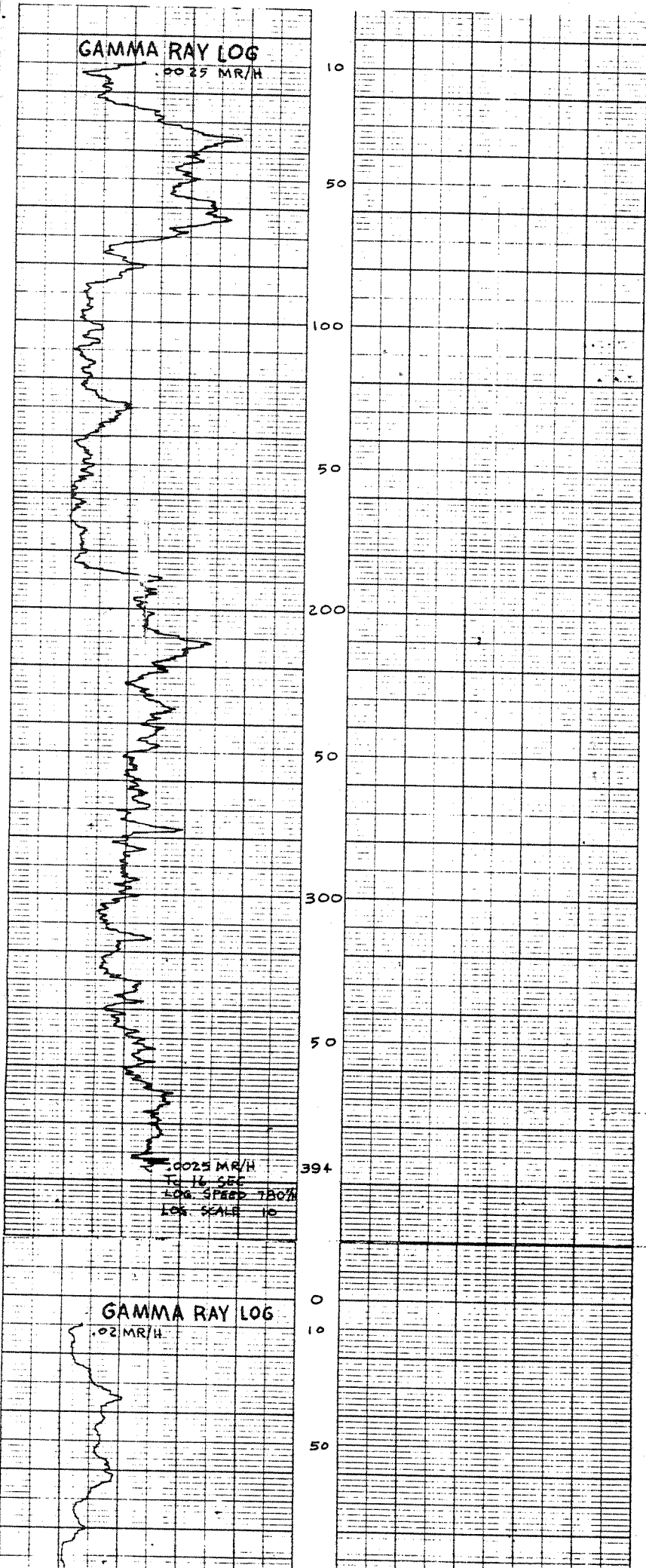
Time constant: 16 sec.; Log. speed: 780 feet/hour; log scale: 10.

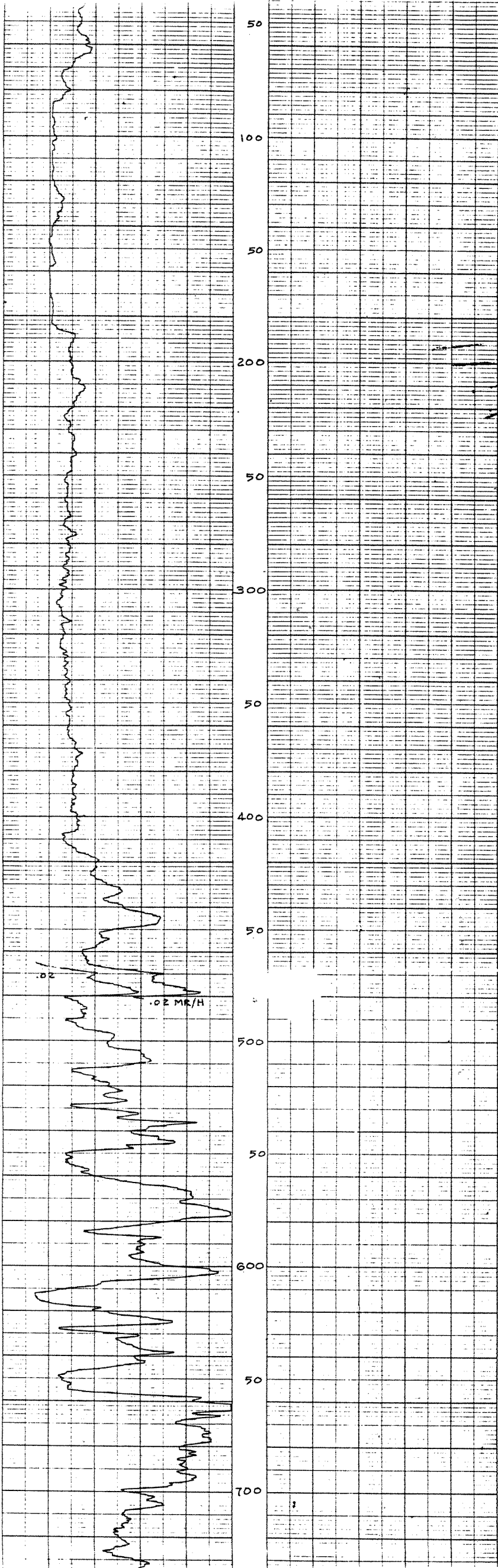
Date: Dec. 12, 1959

043-25

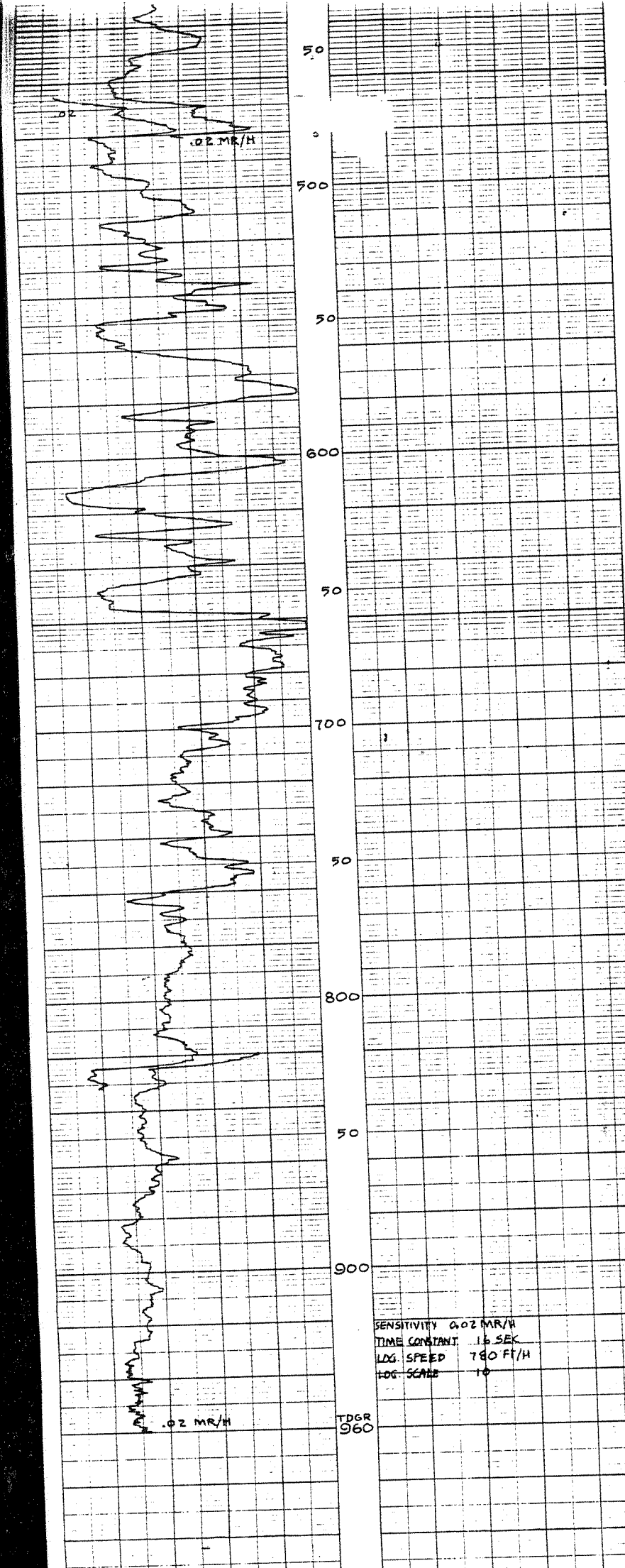
Logging scales: 5, 20 mv/inch

Depth Resistivity 5, 10 ohms/inch



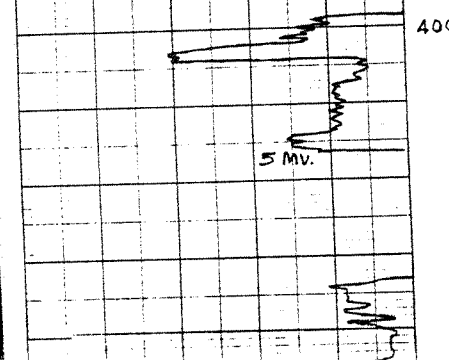


MINNEAPOLIS HOUGHTONWELL RES. CO. BROWN INSTRUMENT DIVISION PHILADELPHIA, PA. PRINTED IN U.S.A.
CHART NO. 8400



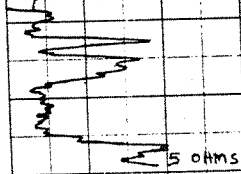
SENSITIVITY 0.02 MR/H
 TIME CONSTANT .16 SEC
 LOG. SPEED 780 FT/H
 LOG. SCALE 10

ELECTRICAL LOG

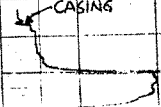


TDGR
 960

RUN No. 1



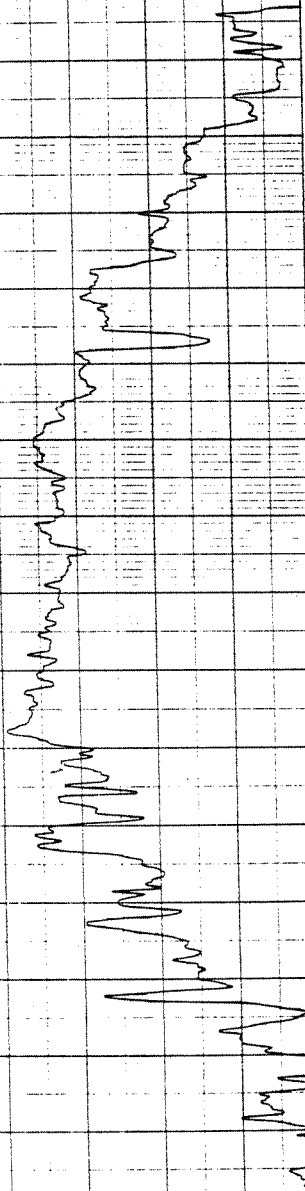
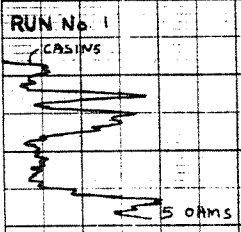
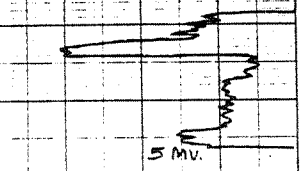
RUN No. 2



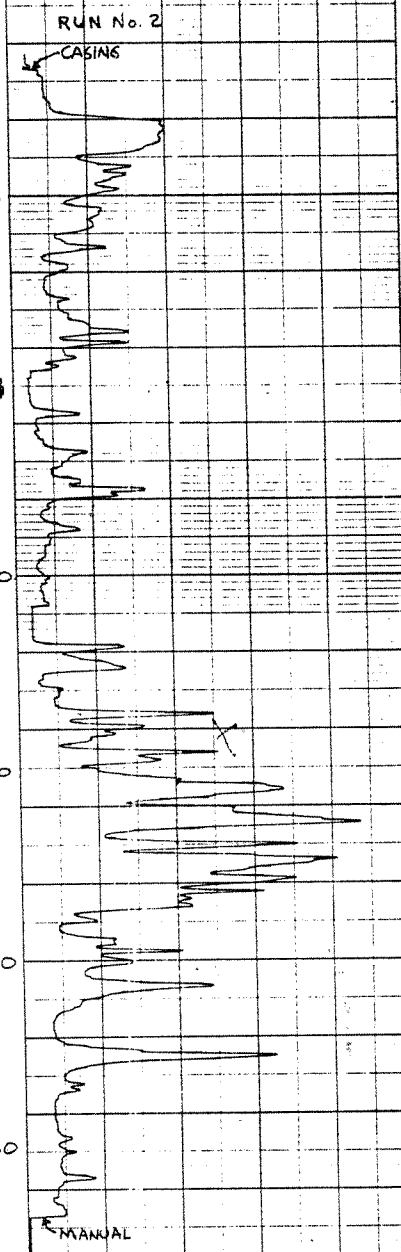
CHESTNUT ST. BRIDGE - MINNEAPOLIS NORTHWELL REC. CO. BROWN INSTRUMENTS DIVISION PHILADELPHIA, PA. PRINTED IN U.S.A.
 CHESTNUT ST. BRIDGE - MINNEAPOLIS NORTHWELL REC. CO. BROWN INSTRUMENTS DIVISION PHILADELPHIA, PA. PRINTED IN U.S.A.
 CHESTNUT ST. BRIDGE - MINNEAPOLIS NORTHWELL REC. CO. BROWN INSTRUMENTS DIVISION PHILADELPHIA, PA. PRINTED IN U.S.A.

TDR
960

ELECTRICAL LOG



400
500
600
50
700
50
800
50
900
50



MANUAL

20 MILLIVOLTS

TDFL
973

10 ORMS

CHART NO. 3401
 MANUFACTURED BY WESTINGHOUSE INSTRUMENT DIVISION
 PITTSBURGH, PA. PRINTED IN U.S.A.

043-25
 W-5434

G1-6

FLORIDA GEOLOGICAL SURVEY

Well No. W-5436

Company (Owner): Coastal Petroleum Company

County Glades

Well: No. 13 State & Atlantic Coast Line

Location: NE 1/4 NE 1/4, sec. 11 T 42 S R 32 E

Electric log by: Hendry Observers Banks

Depth datum: Derrick Floor Elevation 16' ground 14.5'

Depth reached: Elec. log Gamma 960 Driller 1021'
973

Hole size: 3 inches Casing data: 6" at 13'; 3 1/2" at 401' - 468'

Water level: 19 ft. rept. meas. above below which is 19 ft. above below surface

Yield: Flow G.M., Pump G.M., meas, rept, est. Use: Dom, Stock, PS, RR, Ind, Irr, Obs, Other Mineral Expl.

Quality: Temp °F. Taste, odor, color:

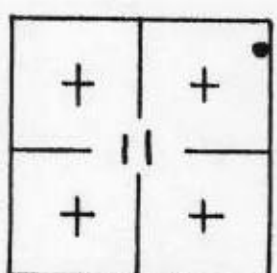
Remarks: Gamma Ray: (960-10); Sensitivity: 960-10 at .02 MR/H. 396- +60 at .0025 MR/H

Time constant: 16 sec.; Log. speed: 780 feet/hour; log scale: 10.

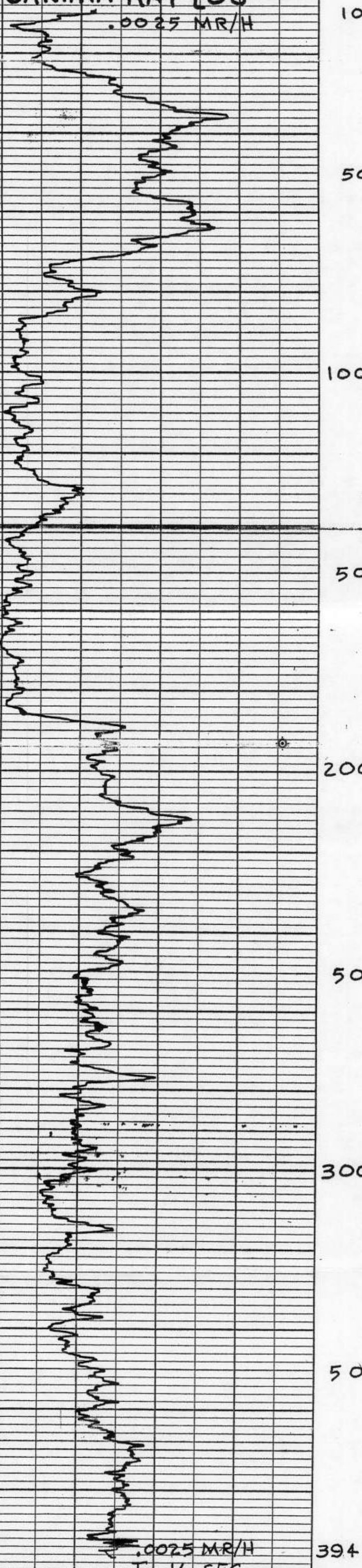
Date: Dec. 12, 1959

Logging scales:
 S.P. 5, 20 mv/inch

Depth 5, 10 ohms/inch



GAMMA RAY LOG
 .0025 MR/H



.0025 MR/H
 Tc 16 SEC
 LOG. SPEED 780/H
 LOG. SCALE 10

394