

2504820 805223
X 541766y 535016
025-8 #267 FORT WORTH BEND

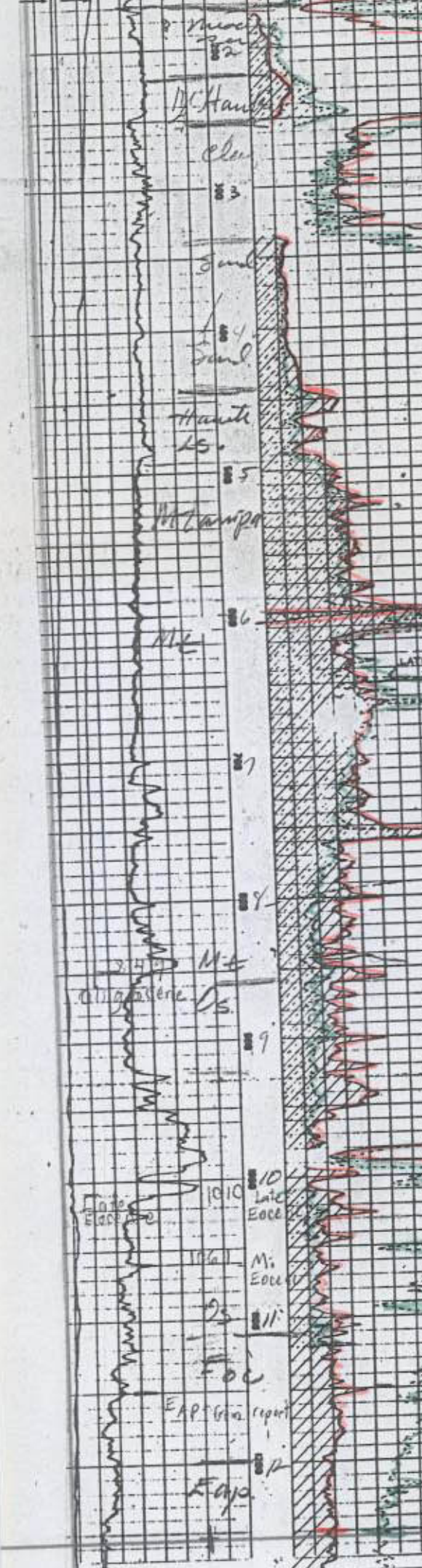
SCHLUMBERGER		
WELL SURVEYING CORPORATION		
COMPOSITE LOG		
Location of Well 200'E 100'N SW CORNER SEC. 31-55S-35E NW 1/4 SW 34 S-479 W-935 Elevation D.F. Add. 18' or G.L. + 20'	COMPANY WILLIAM G. BLANCHARD AND ASSOCIATES WELL: EVERGLADES #1 RUN NO. 1 & 2 FIELD: WILD CAT SURVEY: SEC. 31-55S-35E COUNTY: DADE STATE: FLORIDA FILING No.	COUNTY: DADE FIELD OR WILDCAT SURVEY: SEC. 31-55S-35E WELL: EVERGLADES #1 COMPANY: W. G. BLANCHARD ASSOC.

	ONE	TWO
Date	9-18-41-42	9-29-43
First Reading	1283	4618
Last Reading	137	3224
Footage Measured	146	3224
Cog Shoe Spline	137	3224
Cog Shoe Driller	137	3212
Max. Depth Reached	1283	4618
Bottom Driller	1270	4508
Depth Datum	ROT. TABLE	ROT. TABLE
Mud Notes	Fullersea	th AQUAGEI
" Resistivity	8.8 # 82	1.9 # 60
" Weight	10	9.5
" Viscosity	65	36
Hole Size	15" 12 1/2"	7 7/8"
Bottom Temp.	85	118
Spinnings		18"
AM.		63"
QA.		24"
Observer	ALGER	WADE

REMARKS

SELF-POTENTIAL millivolts RESISTIVITY

Top from Miller
↓ RSA 2-100' S-479



SOIL T.D. - 1283
DRILLER'S T.D. - 1270
WM. G. BLANCHARD ET AL. ELEV. - 18

