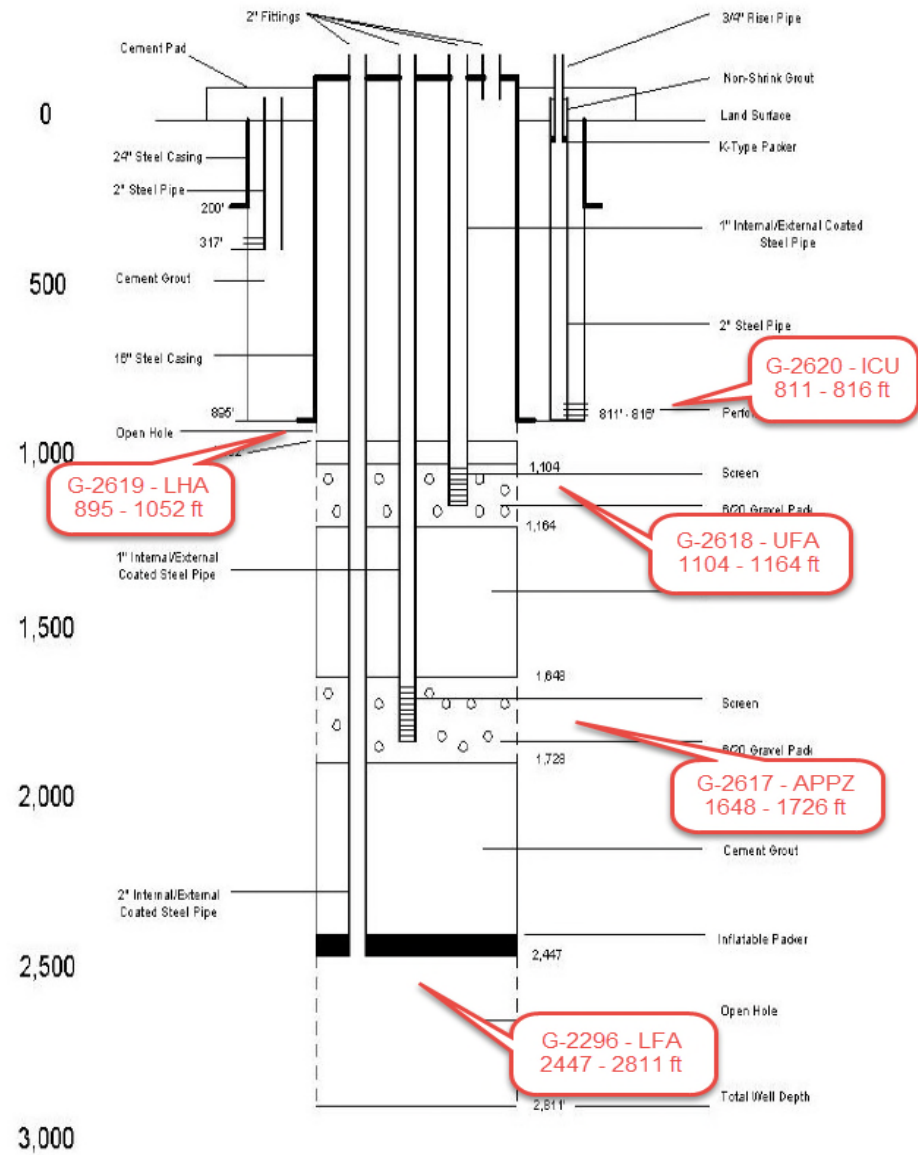


Site Name **ALLY-TW**
 Station Names G-2620, G-2619, G-2618, G-2617, G-2296
 Aquifers ICU, LHA, UFA, APPZ, LFA
 FDEP Identifier Unknown
 Date of this summary 9/25/2017

Lat / Long: 261017.046/804919.375
 County: Broward
 Wellhead Repair Date: 10/11/2000

Figure 3. Modified Alligator Alley Well Schematic



Date of Photo (2006)

This is a five zone monitor well. Water quality summaries are provided for the G-2617 (APPZ) and G-2618 (UFA). G-2619 had purging issues possibly impacting the quality of data. G-2296 (LFA) did not have sufficient data for this analysis.

Monitor Zone G-2618 (UFA)

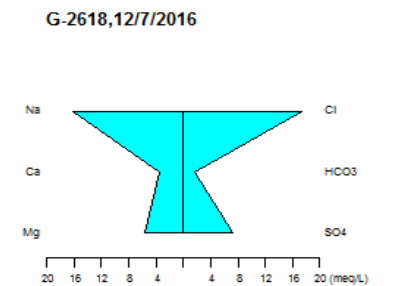
Casing Material:	Steel
Diameter:	1-inch
Data Range:	2004 - 2016
Sampling Events Analyzed:	19
Water Type:	Na-Mg-Cl-SO4

Field Parameter Averages G-2618

Field pH:	7.96
Specific Conductance (uS/cm)	3625
Temperature (Celcius)	25.65
TDS (mg/L)	1594
Water Level (ft NGVD 29)	59.11
Well Volume (gallons)	47

G-2618 Ionic Ranges

Parameter	Min (mg/L)	Max (mg/L)
Potassium (K)	19	26
Sodium (Na)	353	639
Calcium (Ca)	61	84
Magnesium (Mg)	63	110
Chloride (Cl)	557	1100
Bicarbonate (HCO3)	73	127
Sulfate (SO4)	316	450



Monitor Zone G-2617 (APPZ)

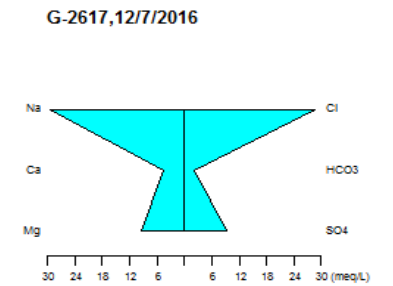
Casing Material:	Steel
Diameter:	1-inch
Data Range:	1994 - 2016
Sampling Events Analyzed:	21
Water Type:	Na-Mg-Cl-SO4

Field Parameter Averages G-2617

Field pH:	7.81
Specific Conductance (uS/cm)	4307
Temperature (Celcius)	25.87
TDS (mg/L)	2560
Water Level (ft NGVD 29)	59.86
Well Volume (gallons)	70

Monitor Zone G-2617 Ionic Ranges

Parameter	Min (mg/L)	Max (mg/L)
Potassium (K)	20	27
Sodium (Na)	378	727
Calcium (Ca)	66	96
Magnesium (Mg)	69	120
Chloride (Cl)	573	1109
Bicarbonate (HCO3)	76	171
Sulfate (SO4)	327	460



Survey data: Survey Addendum May 2017, NGVD offset 1.453ft
 Reference elevations: Land surface elevation 15.4 ft NGVD
 G-2619 (GW1)-17.43ft NAVD88, G-2618 (GW2)-17.22ft NAVD88, G-2617 (GW3)-17.24ft NAVD88
 References: SFWMD Technical memorandum, Alligator Alley, Wellhead Repair, October 2000.
 SFWMD Survey date 5/4/2017