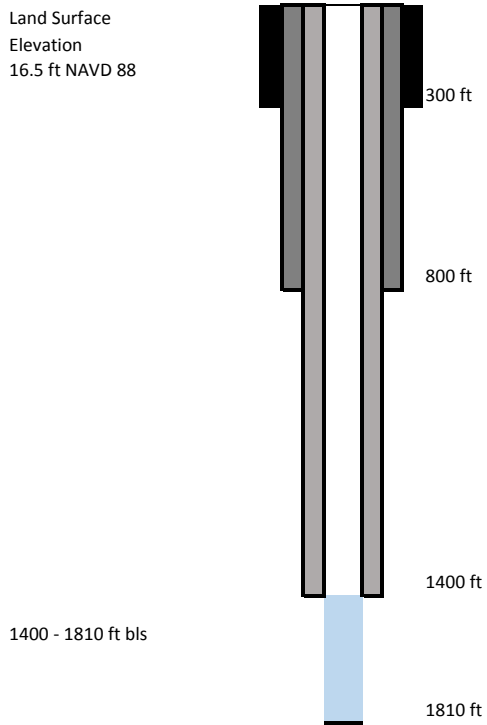


Site Name **L2GW**  
 Station Names L2-PW1  
 Aquifers APPZ  
 FDEP Identifier unknown  
 Date of this sumrn 7/12/2017

Lat / Long: 263627.433, 805657.397  
 County: Hendry  
 Wellhead Repair Date:

2014

Land Surface  
 Elevation  
 16.5 ft NAVD 88



Date of photo: 2016

Survey data: 6/13/2017  
 Reference elevation: 22.05 ft NAVD 88 to convert to NGVD 29 add 1.378  
 References SFWMD survey 6/13/2017  
 Bennett, M. W., 2001.  
 Hydrogeologic investigation of Floridan Aquifer System at  
 L2 canal site, Hendry County, Florida  
 Technical Publication WS-3

Monitor Zone	
Casing Material:	Steel
Diameter:	8 inch
Data Range:	2005 - 2011
Sampling Events Analyzed:	13
Water Type:	Na-Mg-Cl-SO4

Field Parameter Averages	
Field pH:	8.01
Specific Conductance (uS/cm)	3313
Temperature (Celcius)	26.42
TDS (mg/L)	2238
Water Level (ft NGVD 29)	58.62

Monitor Zone		
Parameter	Min (mg/L)	Max (mg/L)
Potassium (K)	13	57
Sodium (Na)	295	1500
Calcium (Ca)	66	150
Magnesium (Mg)	72	180
Chloride (Cl)	526	2300
Bicarbonate (HCO3)	80	232
Sulfate (SO4)	320	790

