



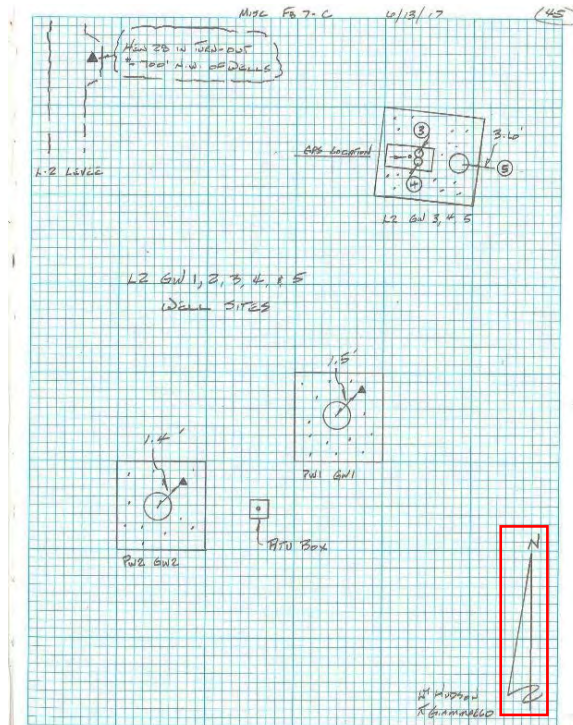
# SOUTH FLORIDA WATER MANAGEMENT DISTRICT

Rev. 1/16

DB Hydro Station Names:		DB Hydro Site Name:		Last Date of Field Work: <b>13-jun-17</b>	
L2-PW1 HE-907 (L2 GW3) HE-909 (L2GW5)	L2-PW2 HE-908 (L2GW4)	L2GW			
Party Chief: <b>Hudson</b>		Field Book: <b>MISC 7C</b>		Page(s) <b>43-45</b>	
Site Benchmark(s): <b>PW2</b>		Benchmark Elevation (NAVD88) <b>16.36</b>		Corpscon 6.0.1 Conversion Factor (NAVD88 to NGVD29) <b>+1.378</b>	
Reference Elevations (NAVD88) at:		Existing Tag Elevations (NGVD29) Datum) at:		Calibration Port Elevations (NAVD88) at:	
<b>22.05</b> L2-PW-1 <b>18.50</b> HE-907 (L2GW3) <b>20.47</b> HE-909 (L2GW5)	<b>20.56</b> L2-PW-2 <b>18.54</b> HE-908 (L2GW4)	<b>23.35</b> L2-PW-1 <b>19.95</b> HE-907 (L2GW3) <b>21.97</b> HE-909 (L2GW5)	<b>21.92</b> L2-PW-2 <b>19.985</b> HE-908 (L2GW4)	<b>22.05</b> L2-PW1 <b>N/A</b> HE-907 (L2GW3) <b>N/A</b> HE-909 (L2GW5)	<b>20.61</b> L2-PW2 <b>N/A</b> HE-908 (L2GW4)
Ground Elevation (NAVD88) at:			Pad Elevation (NAVD88):		
<b>L2-PW1</b> <b>16.4</b> NW Corner <b>16.5</b> NE Corner <b>16.5</b> SE Corner <b>16.6</b> SW Corner		<b>L2-PW2</b> <b>16.0</b> NW corner <b>16.3</b> NE Corner <b>16.2</b> SE Corner <b>16.1</b> SW Corner		<b>L2-PW1</b> <b>17.01</b> NW Corner <b>17.05</b> NE Corner <b>17.02</b> SE Corner <b>17.04</b> SW Corner	
<b>HE-907</b> (L2 GW3), <b>HE-908</b> (L2GW4), <b>HE-909</b> (L2GW5) <b>16.0</b> NW Corner <b>16.0</b> NE Corner <b>16.0</b> SE Corner <b>16.0</b> SW Corner (Note: all ground elevations are the same)		<b>HE-907</b> (L2 GW3), <b>HE-908</b> (L2GW4), <b>HE-909</b> (L2GW5) <b>16.22</b> NW Corner <b>16.29</b> NE Corner <b>16.25</b> SE Corner <b>16.19</b> SW Corner			
Latitude: L2-PW-1 <b>26°36'28.86"</b> L2-PW-2 <b>26°36'28.7</b> HE-907 (L2 GW3), HE-908 (L2GW4) & HE-909 (L2GW5) <b>26°36'29.4"</b>			Longitude: L2-PW-1 <b>80°56'57.72 "</b> L2-PW-2 <b>80°56'57.95"</b> HE-907 (L2 GW3), HE-908 (L2GW4) ) & HE-909 (L2GW5) <b>80°56'57.5"</b>		
Notes: N/A – Not applicable NAVD88 – North American Vertical Datum of 1988 NGVD29- National Geodetic Vertical Datum of 1929 Corpscon 6.0.1 - A U.S. Army Corps of Engineers Engineering Research and Development Center Topographic Engineering Center Alexandria, Virginia Windows-based program to convert coordinates and elevations between datum's using vertcon05.txt and vertcon05.05 files supplied by the U.S. Army Corps of Engineers South Atlantic Division, Jacksonville Fl.					

## PICTURES

Overall Site



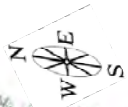
Field Book MISC 7C page 45 (Not to scale) (13-jun-17)



# SOUTH FLORIDA WATER MANAGEMENT DISTRICT

Rev. 1/16

### L2-PW1 Well



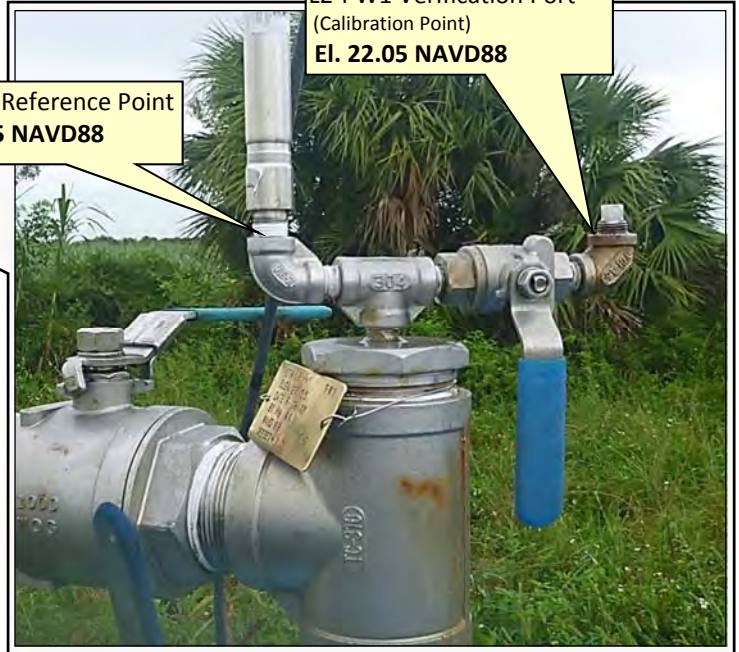
PW1 Brass Disk  
Latitude: 26°36'-28.86"  
Longitude: 80°56'-57.72"  
El. 17.06 NAVD88



Looking Easterly (Not to scale) (13-jun-17)

L2-PW1 Reference Point  
El. 22.05 NAVD88

L2-PW1 Verification Port  
(Calibration Point)  
El. 22.05 NAVD88

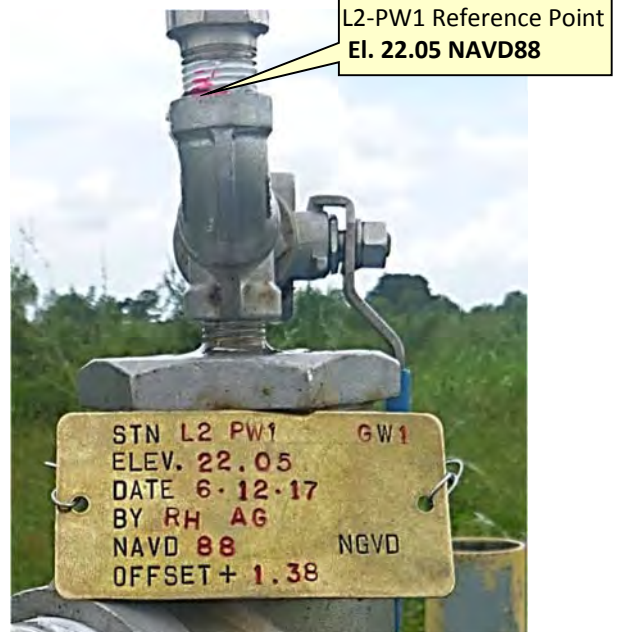


### Brass Tag Close-up



STN L2 PW1 GW1  
ELEV. 22.05  
DATE 6-12-17  
BY RH AG  
NAVD 88 NGVD  
OFFSET + 1.38

### Brass Tag and Reference Point Close-up



L2-PW1 Reference Point  
El. 22.05 NAVD88

STN L2 PW1 GW1  
ELEV. 22.05  
DATE 6-12-17  
BY RH AG  
NAVD 88 NGVD  
OFFSET + 1.38





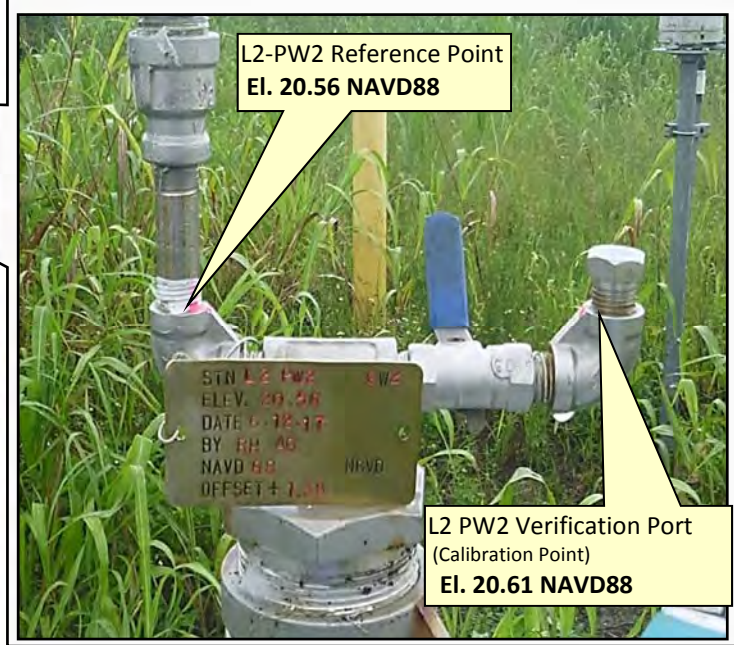
# SOUTH FLORIDA WATER MANAGEMENT DISTRICT

Rev. 1/16

### L2-PW2 Well



PW2 Brass Disk  
Latitude: 26°36'28.78"  
Longitude: 80°56-57.95"  
El. 16.356 NAVD88

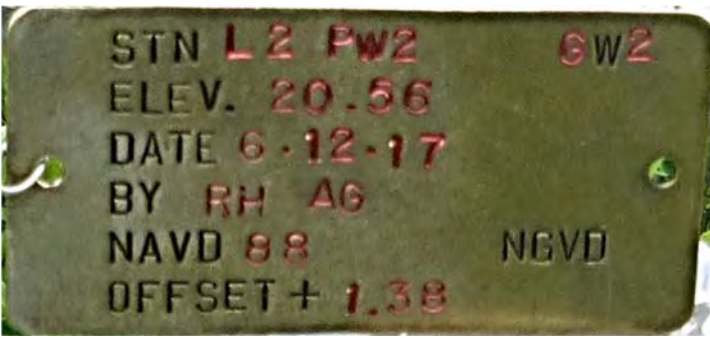


L2-PW2 Reference Point  
El. 20.56 NAVD88

L2 PW2 Verification Port  
(Calibration Point)  
El. 20.61 NAVD88

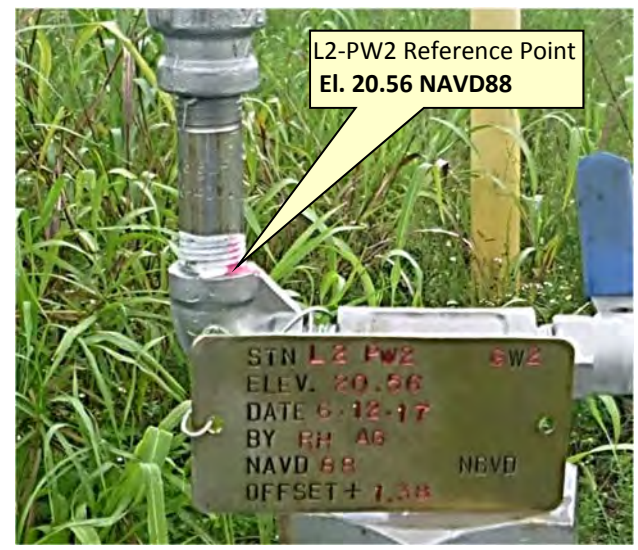
Looking Southerly (Not to scale) (13-jun-17)

### Brass Tag Close-up



STN L2 PW2 6W2  
ELEV. 20.56  
DATE 6-12-17  
BY RH AG  
NAVD 88 NGVD  
OFFSET + 1.38

### Brass Tag and Reference Point Close-up



L2-PW2 Reference Point  
El. 20.56 NAVD88

STN L2 PW2 6W2  
ELEV. 20.56  
DATE 6-12-17  
BY RH AG  
NAVD 88 NGVD  
OFFSET + 1.38





# SOUTH FLORIDA WATER MANAGEMENT DISTRICT

Rev. 1/16

HE-907 (L2-GW3), HE-908 (L2-GW4) and HE-909 (L2-GW5) Well Site



Looking Northeasterly (Not to scale) (13-jun-17)

HE-907 (L2-GW3) & HE-908 (L2-GW4)



Looking Northeasterly (Not to scale) (13-jun-17)





# SOUTH FLORIDA WATER MANAGEMENT DISTRICT

Rev. 1/16

HE-907 (L2-GW3) & HE-908 (L2-GW4)



HE-907 (L2-GW3) Brass Tag) NGVD29



HE-908 (L2-GW4) Brass Tag) NGVD29



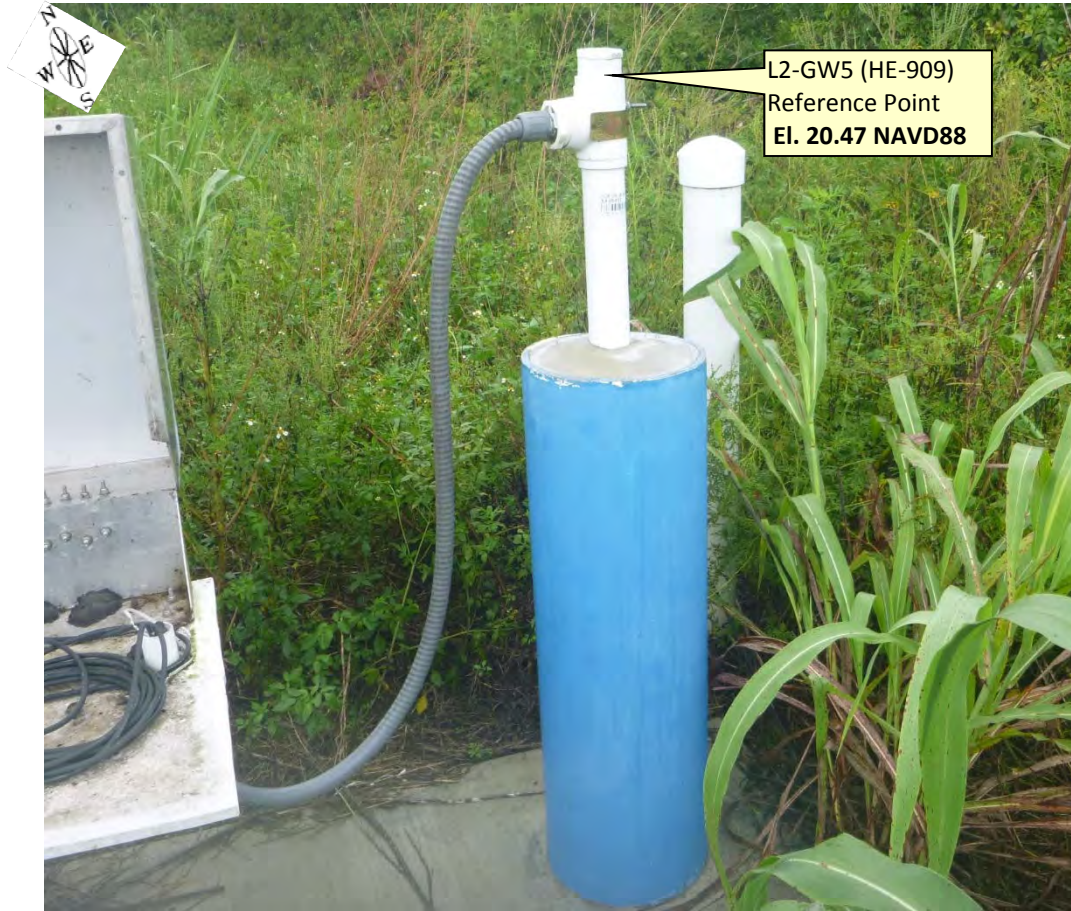




# SOUTH FLORIDA WATER MANAGEMENT DISTRICT

Rev. 1/16

HE-909 (L2-GW5)

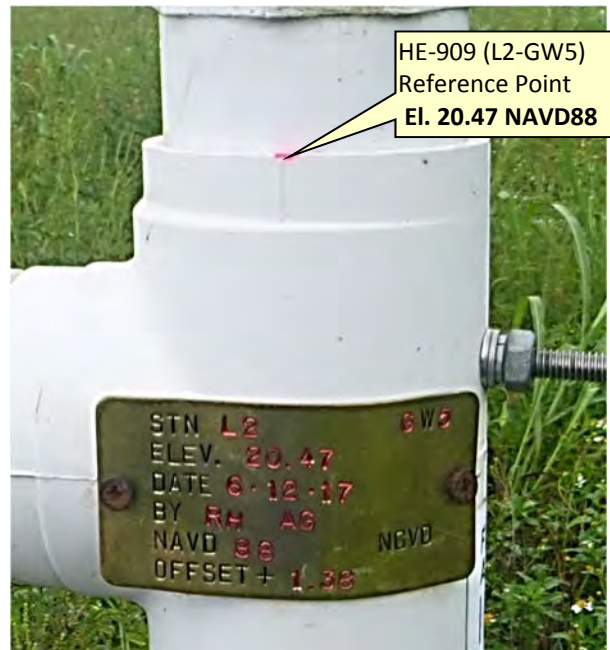


Looking Northeasterly (Not to scale) (13-jun-17)

HE-909 (L2-GW5) Brass Tag Close-up





Brass Tag and Reference Point Close-up





# SOUTH FLORIDA WATER MANAGEMENT DISTRICT

Rev. 1/16

DESIGNATION: <b>PW2</b>		PROJECT: <b>L2GW (HE-907, HE-908 &amp; HE-909) Well Site</b>	
ESTABLISHED BY: <b>UNKNOWN</b>		SURVEYOR: <b>Hudson</b>	
RECOVERED BY: <b>SOUTH FLORIDA WATER MANAGEMENT DISTRICT</b>		DATE: <b>13-jun-17</b>	
<b>GEOGRAPHIC POSITION</b>			
SECTION <b>4</b>	TOWNSHIP <b>45 SOUTH</b>	RANGE <b>34 EAST</b>	
COUNTY <b>Hendry</b>	NAME OF QUADRANGLE: <b>Lake Harbor SW</b> GEOGRAPHIC INDEX OF QUAD: <b>3108</b>		
HORIZONTAL DATUM: 1927 <b>(1983)</b> Other _____ (circle one) ZONE <b>(E)</b> or W			
VERTICAL DATUM: MSL 1929 <b>(1988)</b> Other _____ (circle one)			
VERTICAL ACCURACY: 1 2 <b>(3)</b>			
STATE PLANE COORDINATE	(N) Y= <b>826681.949</b>	(E) X= <b>672689.872</b>	NAVD 88 EL. <b>16.356</b> NGVD 29 EL. <b>17.72</b>
CORPSCON 6.0.1 CONVERSION FACTOR (NAVD88 TO NGVD29): <b>+1.378</b>			
LATITUDE: <b>26°36'28.778"</b>		LONGITUDE: <b>80°56'57.949"</b>	
<b>RECOVERY DATA</b>			
Stamping: <b>NAVD 88 EL16.36 NGVD-29 EL. 17.72</b>			
To Reach: From the intersection of County Road 835 and South Florida Water Management District's Levee 1, go south on SFWMD's Levee 1 for 1.1 miles; turn into the field and go 69 feet to L2-PW2 well and station location.			
Station is a brass cap located on the concrete pad 1.4 feet northeast of L2-PW2 well.			
NGS SOURCE BENCHMARK: <b>HEN 28 (AI1525) 26.217 NAVD88 27.581 NGVD29</b> ( <i>ngvd29.txt file</i> )			
FIELD BOOK: <b>MISC 7C PAGES 43-45</b>			
<b>PICTURES</b>			
Overall Site			
			
<p style="text-align: center;">Brass Disk at PW2 Well Site stamped "NAVD 88 EL 16.36 NGVD29 EL. 17.72" El. 16.356 NAVD88 El. 17.72 NGVD29</p>		<p>Looking Southwesterly (Not to scale) (13-jun-17)</p>	





# SOUTH FLORIDA WATER MANAGEMENT DISTRICT

Rev. 1/16

## Field Notes (MISC 7C pages 43-45)

MISC Pg 7-C      6/12/17

SEC	#	TWP	45	Box	34
HE - 907 MAG HE: 909					
ESTAB REF ELEV'S & CORNERS AT GRID DILLS					
REF	1. WPT SINKET 2. OLD WELL REPORTS 3. Bm DIAL. SINKETS				
LEVELS TO ESTAB VERT CONTROL @ WELL SITE					
FILE LINE No.	K26W				
POINTS	Elev		Bm		
1			26.22 [BB]		
2	22.165		22.24 (PUB EL)		
3	20.22		20.22		
LEVELS CORRD TO SITE Bm					
2			22.165		
5	16.356				
7	22.163		22.165		
END LEVEL LOOP					
CORRD Pn. 44					

MISC Pg 7-C      6/12/17      (43)

EQUIP.	DIAL. LEVEL - BAR CODE END		KIM HUDSON & GIANMARCO	
NOTE				
WE MADE A THROUGH SEARCH FOR SITE Bm "IN Bm 40" USING THE GREEN HAND WELD TO INDICATE TO LEFT/RIGHT. WE SEARCHED ± A 25' RADIUS FROM Bm LOCATION; DIGGING MANY PIECES OF RUST METAL & FERRIC REMAINS. MARK NOT FD. COMMENTS:				
NWS HED 2B RECORDED IN GOOD COND RE DISE.				
"Bm 6150 LB" ERROR 0.075'; CORRD LEVELS TO CLOSE LOOP?				
HED 2B ERROR 0.00'				
6150 LB ABOVE				
FD BRASS DISC IN NE COR OF CONC WELL PAD AT WELL # PW2				
6150 LB ABOVE ERROR 0.002'				

MISC Pg 7-C      6/12/17

STA	#	HC	Elev	Bm
CORRD RE Pn. 43				
ESTAB REF ELEV'S				
~ PW2 ~	4.34	22.70		16.36 [BB]
REF EL		2.14	20.56	
VER PT		2.07	20.61	
NE COR		6.36	16.34	
NE GRID		6.4	16.3	
SE COR		6.35	16.35	
SE GRID		6.5	16.2	
SW COR		6.34	16.36	
SW GRID		6.6	16.1	
NW COR		6.34	16.36	
NW GRID		6.7	16.0	
~ PW1 ~		0.65	22.05	
		0.65	22.05	
Bm		5.64	17.06	
NE COR		5.65	17.05	
GRID		6.2	16.5	
SE COR		5.63	17.02	
GRID		6.2	16.5	
SW COR		5.66	17.04	
GRID		6.1	16.6	
NW COR		5.69	17.01	
GRID		6.3	16.4	
~ Grid 3 ~		4.20	18.50	
~ Grid 4 ~		4.16	18.54	
~ Grid 5 ~		2.23	20.47	
NE COR		6.41	16.29	
GRID		6.7	16.0	
SE COR		6.45	16.25	
SW COR		6.51	16.19	
NW COR		6.48	16.22	
Bm		6.34	16.36	16.36
END LEVELS				
CORRD Pn. 45				

MISC Pg 7-C      6/12/17      (44)

ZEISS N12 - 25' Rod & PULLER TAPE		KIM HUDSON & GIANMARCO	
COMMENTS			
BRASS DISC IN NE COR OF CONC PAD @ WELL PAD 2 (P. 43)			
REF EL			
VER			
BRASS DISC IN PD 1 CONC PAD			
NE COR			
GRID			
SE COR			
GRID			
SW COR			
GRID			
NW COR			
GRID			
REF EL			
REF EL			
REF EL			
NE COR CONC.			
GRID NOTE: ALL GRID ELEV'S ARE SAME			
SE COR CONC.			
SW " "			
NW " "			
Bm BRASS DISC @ PD 2 POINT			





# SOUTH FLORIDA WATER MANAGEMENT DISTRICT

Rev. 1/16

(40) Misc FB 7-C 4/13/17

LORDS FE Rd 44  
ESTAB Well Control

GPS STATIC SESSION @ 3m HEN 28, NEW SITE  
FOR WINDWARD WELLS

<p><u>HEN 28</u></p> <p>Receiver: 5410</p> <p>START: 8:37</p> <p>END: 10:47</p> <p>Avg Hr 1.5 min</p>	<p><u>BRASS DISC @ P#2</u></p> <p>Receiver: 5378</p> <p>START: 8:51</p> <p>END: 11:02</p> <p>Avg Hr 1.5 min</p>
---	---

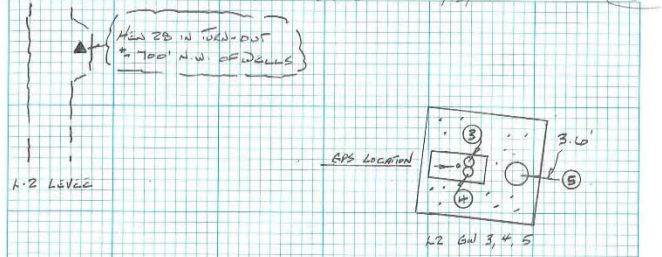
<p><u>BRASS DISC @ P#1</u></p> <p>Receiver: 5410</p> <p>START: 11:01</p> <p>END: 12:15</p> <p>Avg Hr 1.5 min</p>	<p><u>CENTER OF BRASS HOUSING @ 3 &amp; 4</u></p> <p>Receiver: 5378</p> <p>START: 11:10</p> <p>END: 12:15</p> <p>Avg Hr 0.00'</p>
--	---

END STATIC SESSIONS

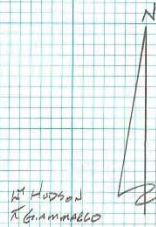
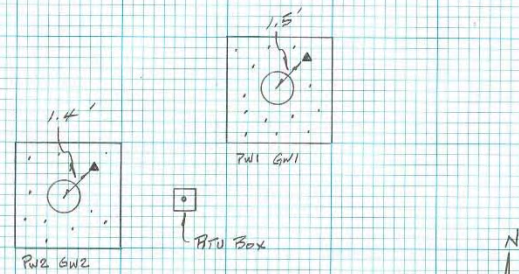
- Photos 1. Red Box Banded Closed
- 2-3 L2 P#1 HOUSING SOUTH
  - 4-5 " " EAST
  - 6 SITS Box
  - 7 TAB
  - 8-9 L2 P#2 " SOUTH
  - 10-11 " " NW
  - 12 SITS Box
  - 13-14 L2 GW 3, 4 " NE WY
  - 15 TABS
  - 16, 17 L2 GW 5 " NW
  - 18, 19 Box @ 50 LB
  - 20-21 HEN 28

END SURVEY

Misc FB 7-C 4/13/17 (45)



L2 GW 1, 2, 3, 4, & 5  
WELL SITES





From the "ngvd29.txt" file provided by NGS for the CERP Geodetic Vertical Control Project.  
 Line/Part: L26265 SSN+: mark floated, SSN\*: mark constrained, SSN#: mark floated & constrained  
 Mark ID SSN PID Designation Geopotential Elevation Codes  
 1897 0026 AI1525 HEN 28 8.2386 8.4067  
 1898 0027 AI1524 HEN 27 7.7394 7.8973

## The NGS Data Sheet

Y=827384.687  
 X=672577.480 NAD83/11 (OPUS)

See file [dsdata.txt](#) for more information about the datasheet.

```
PROGRAM = datasheet95, VERSION = 8.8
1      National Geodetic Survey,  Retrieval Date = JANUARY 10, 2016
AI1525 *****
AI1525 DESIGNATION - HEN 28
AI1525 PID - AI1525
AI1525 STATE/COUNTY- FL/HENDRY
AI1525 COUNTRY - US
AI1525 USGS QUAD - LAKE HARBOR SW (1994)
AI1525
AI1525 *CURRENT SURVEY CONTROL
AI1525
AI1525* NAD 83(1986) POSITION- 26 36 37. (N) 080 57 00. (W) SCALED
AI1525* NAVD 88 ORTHO HEIGHT - 7.991 (meters) 26.22 (feet) ADJUSTED
AI1525
AI1525 GEOID HEIGHT - -24.727 (meters) GEOID12B
AI1525 DYNAMIC HEIGHT - 7.979 (meters) 26.18 (feet) COMP
AI1525 MODELED GRAVITY - 979,092.3 (mgal) NAVD 88
AI1525
AI1525 VERT ORDER - FIRST CLASS II
AI1525
AI1525.The horizontal coordinates were scaled from a topographic map and have
AI1525.an estimated accuracy of +/- 6 seconds.
AI1525.
AI1525.The orthometric height was determined by differential leveling and
AI1525.adjusted by the NATIONAL GEODETIC SURVEY
AI1525.in October 1999.
AI1525
AI1525.Significant digits in the geoid height do not necessarily reflect accuracy.
AI1525.GEOID12B height accuracy estimate available here.
AI1525
AI1525.The dynamic height is computed by dividing the NAVD 88
AI1525.geopotential number by the normal gravity value computed on the
AI1525.Geodetic Reference System of 1980 (GRS 80) ellipsoid at 45
AI1525.degrees latitude (g = 980.6199 gals.).
AI1525
AI1525.The modeled gravity was interpolated from observed gravity values.
AI1525
AI1525; North East Units Estimated Accuracy
AI1525;SPC FL E - 252,230. 204,980. MT (+/- 180 meters Scaled)
AI1525
AI1525 SUPERSEDED SURVEY CONTROL
AI1525
AI1525.No superseded survey control is available for this station.
AI1525
AI1525_U.S. NATIONAL GRID SPATIAL ADDRESS: 17RNK049432 (NAD 83)
AI1525
AI1525_MARKER: F = FLANGE-ENCASED ROD
AI1525_SETTING: 49 = STAINLESS STEEL ROD W/O SLEEVE (10 FT.+)
AI1525_STAMPING: BM HEN-28 1983 SFLWMD
AI1525_MARK LOGO: SFLWMD
AI1525_PROJECTION: RECESSED 15 CENTIMETERS
```



AI1525\_MAGNETIC: M = MARKER EQUIPPED WITH BAR MAGNET  
 AI1525\_STABILITY: B = PROBABLY HOLD POSITION/ELEVATION WELL  
 AI1525\_SATELLITE: THE SITE LOCATION WAS REPORTED AS SUITABLE FOR  
 AI1525+SATELLITE: SATELLITE OBSERVATIONS - March 05, 2009  
 AI1525\_ROD/PIPE-DEPTH: 12.8 meters

AI1525	HISTORY	- Date	Condition	Report By
AI1525	HISTORY	- 1983	MONUMENTED	SFLWMD
AI1525	HISTORY	- 19961002	GOOD	FLDEP
AI1525	HISTORY	- 20020221	GOOD	FLDEP
AI1525	HISTORY	- 20050811	GOOD	INDIV
AI1525	HISTORY	- 20090305	GOOD	PICKET

AI1525

AI1525

AI1525

STATION DESCRIPTION

AI1525'DESCRIBED BY FL DEPT OF ENV PRO 1996 (VAJ)  
 AI1525'THE MARK IS ABOUT 18.1 MI (29.1 KM) WEST-SOUTHWEST OF BELLE GLADE,  
 AI1525'10.0 MI (16.1 KM) SOUTH OF CLEWISTON IN SECTION 33, TOWNSHIP 45 SOUTH,  
 AI1525'RANGE 34 EAST. TO REACH THE MARK FROM THE POST OFFICE IN LAKE HARBOR,  
 AI1525'GO SOUTHERLY ON MIAMI CANAL ROAD (WEST SIDE OF CANAL) FOR 0.65 MI  
 AI1525'(1.05 KM) TO THE END OF THE PAVEMENT, CONTINUE SOUTH ON MIAMI CANAL  
 AI1525'ROAD FOR 2.35 MI (3.78 KM) TO THE JUNCTION OF ROGERS ROAD ON THE  
 AI1525'RIGHT, TURN RIGHT ON ROGERS ROAD AND GO WEST FOR 3.8 MI (6.1 KM) TO  
 AI1525'THE PALM BEACH-HENDRY COUNTY LINE, CONTINUE WEST ON ROGERS ROAD FOR  
 AI1525'0.95 MI (1.53 KM) TO A SHARP CURVE RIGHT, CONTINUE THRU THE CURVE  
 AI1525'RIGHT AND GO NORTH THEN WEST ON ROGERS ROAD FOR 0.05 (CROSSING OVER  
 AI1525'THE L1-E CANAL BRIDGE) TO THE Y-JUNCTION OF COUNTY ROAD 832, CONTINUE  
 AI1525'WEST ON COUNTY ROAD 832 FOR 1.0 MI (1.6 KM) TO THE APPROXIMATE CENTER  
 AI1525'OF A SHARP CURVE LEFT AND BRIDGE NUMBER 302 OVER THE L1-E CANAL,  
 AI1525'CONTINUE THRU THE CURVE LEFT AND GO SOUTH ON COUNTY ROAD 832 FOR 1.95  
 AI1525'MI (3.14 KM) TO A SHARP CURVE RIGHT, CONTINUE THRU THE CURVE RIGHT AND  
 AI1525'GO WEST ON COUNTY ROAD 832 FOR 2.0 MI (3.2 KM) TO THE L-2 CANAL AND  
 AI1525'THE LEVEE ROAD ON THE LEFT (EAST SIDE OF CANAL) , TURN LEFT ON LEVEE  
 AI1525'ROAD NUMBER L-2 AND GO SOUTH FOR 1.0 MI (1.6 KM) TO A TURNOUT ON THE  
 AI1525'TOP OF THE LEVEE AND THE MARK ON THE RIGHT, SET IN THE APPROXIMATE  
 AI1525'CENTER OF THE TURNOUT, A STAINLESS STEEL ROD DRIVEN INTO THE GROUND,  
 AI1525'ENCASED IN A 6-INCH PVC PIPE RECESSED 0.2 FT (6.1 CM) BELOW THE LEVEL  
 AI1525'OF THE GROUND, THE DATUM POINT IS RECESSED 0.6 FT (18.3 CM) BELOW THE  
 AI1525'LEVEL OF THE 6-INCH PVC SCREW CAP. LOCATED 52.1 FT (15.9 M) NORTH OF  
 AI1525'THE APPROXIMATE SOUTH END OF THE TURNOUT, 48.0 FT (14.6 M) SOUTH OF  
 AI1525'THE APPROXIMATE NORTH END OF THE TURNOUT, 43.5 FT (13.3 M) WEST OF THE  
 AI1525'APPROXIMATE CENTERLINE OF THE DIRT ROAD AT THE TOE OF THE LEVEE, 30.0  
 AI1525'FT (9.1 M) WEST OF A CARSONITE WITNESS POST AND 13.0 FT (4.0 M) EAST  
 AI1525'OF THE APPROXIMATE CENTERLINE OF THE DIM TRACK ROAD AT THE TOP OF THE  
 AI1525'LEVEE. NOTE ACCESS TO DATUM POINT IS HAD THROUGH A 6-INCH PVC SCREW  
 AI1525'CAP. CONTACT GENE TANNER, SOUTH FLORIDA WATER MANAGEMENT, REGIONAL  
 AI1525'DIRECTOR, CLEWISTON FIELD STATION, PHONE NUMBER 813-983-1431.

AI1525

AI1525

AI1525

STATION RECOVERY (2002)

AI1525'RECOVERY NOTE BY FL DEPT OF ENV PRO 2002 (JLM)  
 AI1525'THE MARK IS ABOUT 18.1 MI WEST-SOUTHWEST OF BELLE GLADE, 10.0 MI SOUTH  
 AI1525'OF CLEWISTON, IN  
 AI1525'SECTION 33, TOWNSHIP 45 SOUTH, RANGE 34 EAST.  
 AI1525'  
 AI1525'TO REACH THE MARK FROM THE JUNCTION OF U.S. HIGHWAY 27 AND COUNTY ROAD  
 AI1525'835 ON THE  
 AI1525'SOUTH SIDE OF CLEWISTON, GO WEST ON COUNTY ROAD 835 FOR 6.7 MI TO THE  
 AI1525'JUNCTION OF  
 AI1525'ROGERS ROAD ON THE LEFT AND A CURVE TO THE RIGHT, BEAR RIGHT AND







Project Information		Coordinate System	
Name:		Name:	Default
Size:		Datum:	WGS 1984
Modified:	2/15/2012 8:48:57 AM (UTC:-7)	Zone:	Default
Time zone:	Mountain Standard Time	Geoid:	
Reference number:		Vertical datum:	
Description:			

## Level Report

**Imported file:** [L2GW.DAT](#)  
**Instrument:** DiNi  
**Standard error per kilometer of double leveling:** 0.00230 ft  
**Standard error per turn/station setup:** 0.00000 ft  
**Creation option:** Delta elevations  
**Description usage:** Feature codes

### Run - 1 Raw Observations

**Raw Misclosure:** -0.00100 ft  
 **$\Sigma$  BS Distances:** 432.220 ft  
 **$\Sigma$  FS Distances:** 432.160 ft  
**Run Length:** 864.380 ft  
**Reduction:** Adjusted Values

Create	Point ID	BS	IS	FS	$\Delta$ Elevation	Raw Elevation	Correction	Adj. Elevation	Type	Distance	Description
<input checked="" type="checkbox"/>	1	<input checked="" type="checkbox"/> 3.74400 ft			0.00000 ft	26.220 ft	0.00000 ft	26.220 ft ▲	Benchmark	202.100 ft	HEN28 3
<input type="checkbox"/>	2			<input checked="" type="checkbox"/> 7.80000 ft	-4.05600 ft	22.164 ft	0.00050 ft	22.164 ft	Computed	229.860 ft	G150L 3
	2	<input checked="" type="checkbox"/> 7.85100 ft								230.120 ft	G150L 3
<input checked="" type="checkbox"/>	3			<input checked="" type="checkbox"/> 3.79600 ft	4.05500 ft	26.219 ft	0.00100 ft	26.220 ft ▲	Benchmark	202.300 ft	HEN28 3

### Run - 1 (N1) Reduced Observations

Observation	Status	Raw $\Delta$ Elevation	Correction	Final $\Delta$ Elevation	Setups	Length	$\Sigma$ BS Readings	$\Sigma$ FS Readings	Std. Error
<a href="#">1-3 (E1)</a>	Enabled	-0.00100 ft	0.00100 ft	0.00000 ft	2	864.380 ft	11.59500 ft	11.59600 ft	0.01594 ft

### Run - 1 (N1) Reduced Coordinates

Point ID	Status	Elevation
<a href="#">1</a>	Enabled	26.22000 ft
<a href="#">3</a>	Enabled	26.22000 ft



## Run - 2 Raw Observations

Raw Misclosure: -0.00300 ft

 $\Sigma$  BS Distances: 404.200 ft $\Sigma$  FS Distances: 404.760 ft

Run Length: 808.960 ft

Reduction: Adjusted Values

Create	Point ID	BS	IS	FS	$\Delta$ Elevation	Raw Elevation	Correction	Adj. Elevation	Type	Distance	Description
<input type="checkbox"/>	2	<input checked="" type="checkbox"/> 5.78700 ft			0.00000 ft	22.164 ft	0.00000 ft	22.164 ft	Benchmark	119.650 ft	G150 3
<input type="checkbox"/>	4			<input checked="" type="checkbox"/> 8.20100 ft	-2.41400 ft	19.750 ft	0.00000 ft	19.750 ft	Computed	29.200 ft	3
	4	<input checked="" type="checkbox"/> 1.67700 ft								125.430 ft	3
<input type="checkbox"/>	5			<input checked="" type="checkbox"/> 5.07300 ft	-3.39600 ft	16.354 ft	0.00000 ft	16.354 ft	Computed	129.660 ft	PW2 3
	5	<input checked="" type="checkbox"/> 5.11700 ft								129.590 ft	PW2 3
<input type="checkbox"/>	6			<input checked="" type="checkbox"/> 1.72200 ft	3.39500 ft	19.749 ft	0.00000 ft	19.749 ft	Computed	125.660 ft	3
	6	<input checked="" type="checkbox"/> 8.14500 ft								29.530 ft	3
	2			<input checked="" type="checkbox"/> 5.73300 ft	2.41200 ft	22.161 ft	0.00300 ft	22.164 ft	Benchmark	120.240 ft	G150 3

Date: 6/13/2017 11:33:28 AM	Project:	Trimble Business Center
-----------------------------	----------	-------------------------



SEC	4	TWP.	45	RGE	34
HE-907 TWD HE-909					
ESTAB REF ELEV'S & COORDS AT BRND WELLS					
REF'S	1. INST. SHEET 2. OLD WELL REPORTS 3. BRND DESC. SHEETS				
LEVELS TO ESTAB VERT CONTROL @ WELL SITE					
FILE	L26W				
LINE No.	1				
POINTS	ELEV		BRND		
1			26.22 [88]		
2	22.165		22.24 (PUB ELEV)		
3	26.22		26.22		
LEVELS CONT'D TO SITE BRND					
2			22.165		
5	16.356				
7	22.163		22.165		
END LEVEL LOOP					
COUNT Pgs. 44					

EQUIP.

DIN. LEVEL - BAR CODE R-D

T.M. HUDSON  
d. GIAMMARCONOTE

WE MADE A THOROUGH SEARCH FOR SITE BRND "IN BRND" USING THE GARMIN HAND HELD TO NAVIGATE TO LAT/LON. WE SEARCHED ± A 25' RADIUS FROM BRND LOCATION; DIGGING UP MANY PIECES OF JUNK METAL & FENCE REMAINS. MARK NOT FD.

Comments

NBS HEN 28 RECOVERED IN GOOD COND FOR TEST.

"BRND G150 L3" ERROR 0.075'; RETURN LEVELS TO CLOSE LOOP.

HEN 28 ERROR 0.00'

G150 L3 ABOVE

FD BRASS DISC IN NE COR OF CONC WELL PAD AT WELL # PW2

G150 L3 ABOVE ERROR 0.002'



COND FL P. 43  
ESTAB REF ELEV'S

STA	+	HC	-	ELEV	BW
- PW2 -	6.34	22.70			<del>16.36</del> [ 88 ]
REF EL			2.14	20.56	
VER PT			2.09	20.61	
NE COR			6.36	16.34	
NE GRND			6.4	16.3	
SE COR			6.35	16.35	
SE GRND			6.5	16.2	
SW COR			6.34	16.36	
SW GRND			6.6	16.1	
NW COR			6.34	16.36	
NW GRND			6.7	16.0	
- PW1 -					
			0.65	22.05	
			0.65	22.05	
BW			5.64	17.06	
NE COR			5.65	17.05	
GRND			6.2	16.5	
SE COR			5.68	17.02	
GRND			6.2	16.5	
SW COR			5.66	17.04	
GRND			6.1	16.6	
NW COR			5.69	17.01	
GRND			6.3	16.4	
- GW 3 -			4.20	18.50	
- GW 4 -			4.16	18.54	
- GW 5 -			2.23	20.47	
NE COR			6.41	16.29	
GRND			6.7	16.0	
SE COR			6.45	16.25	
SW COR			6.51	16.19	
NW COR			6.48	16.22	
BW			6.34	16.36	16.36

END LEVELS  
COND P. 45

16.356 Adj.

ZEISS NiZ - 25' Rod & POUCKET TAPE

TAM HUDSON  
& G. AMMARCO

COMMENTS
BRASS DISC IN NE COR OF CONC PAD @ WELL PW2 (Pg 43)
REF EL
VER
CONC
GRND
CONC
GRND
CONC
GRND
CONC
GRND
REF EL
VER
BRASS DISC IN PW1 CONC PAD
NE COR
GRND
SE COR
GRND
SW COR
GRND
NW COR
GRND
REF EL
REF EL
REF EL
NE COR CONC.
GRND NOTE: ALL GRND ELEV'S ARE SAME
SE COR CONC.
SW " "
NW " "
BW BRASS DISC @ PW2 ABOVE



CONFID FE PO. 44  
ESTAB HOLE CONTROL

GPS STATIC SESSION @ 3m HEN 28, WELL SITE  
BUT INCLUDING WELLS.

HEN 28

RELIEVER: 5410  
START: 8:37  
END: 10:47  
ANT. HT: 1.5 m

BRASS DISC @ PW2

RELIEVER: 5378  
START: 8:51  
END: 10:02  
ANT. HT: 1.5 m

BRASS DISC @ PW1

RELIEVER: 5410  
START: 11:01  
END: 12:15  
ANT. HT: 1.5 m

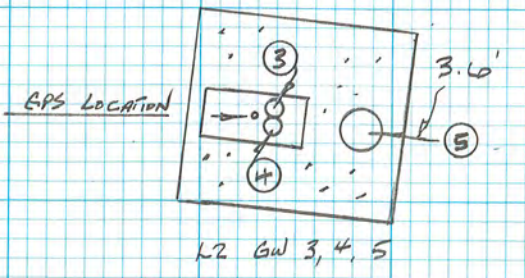
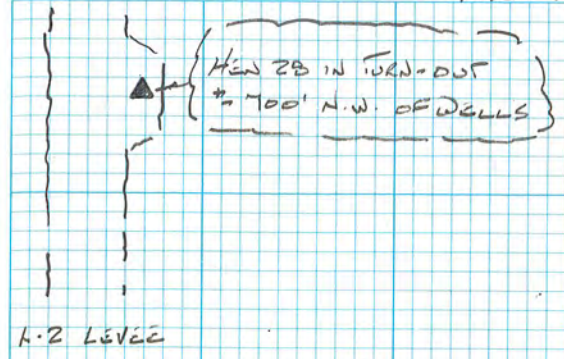
CENTER OF BOX HOUSING GW 3 & 4

RELIEVER: 5378  
START: 11:10  
END: 12:15  
ANT. HT: 0.00'

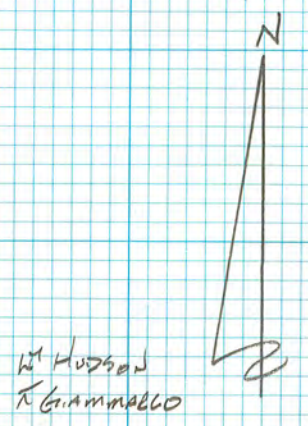
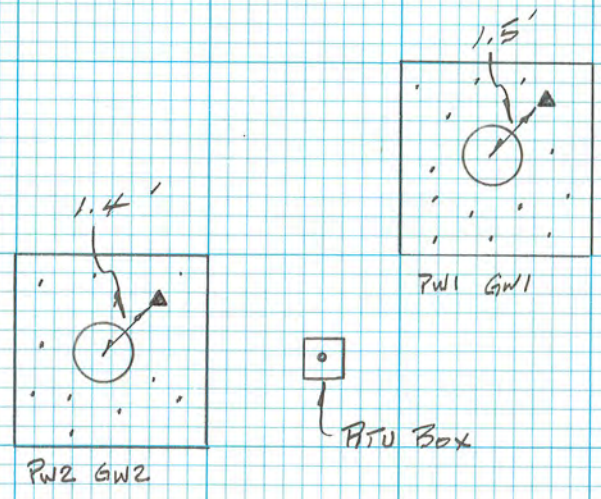
END STATIC SESSIONS

- PHOTOS 1. 2nd Box Banded Closed
- 2-3 L2 PW1 looking SOUTH
  - 4-5 " " EAST
  - 6 SITE Box TAG
  - 7
  - 8-9 L2 PW2 " SOUTH
  - 10-11 " " NW
  - 12 SITE Box TAG
  - 13-14 L2 GW 3, 4 " NE
  - 15 TAGS
  - 16, 17 L2 GW 5 " NW
  - 18, 19 Box G150 L3
  - 20-21 HEN 28

END SURVEY



L2 GW 1, 2, 3, 4, & 5  
WELL SITES





From: opus  
To: Ehmke, Howard  
Subject: OPUS solution : HEN28.tps OP1497881718549  
Date: Monday, June 19, 2017 10:16:22 AM

---

FILE: HEN28.tps OP1497881718549

1009 WARNING! No antenna type was selected. No antenna offsets or  
1009 pattern will be applied. Coordinates with reduced accuracy  
1009 will be returned for the antenna phase center.  
1009

NGS OPUS SOLUTION REPORT  
=====

All computed coordinate accuracies are listed as peak-to-peak values.  
For additional information: <https://www.ngs.noaa.gov/OPUS/about.jsp#accuracy>

USER: hehmke@sfwmd.gov                      DATE: June 19, 2017  
RINEX FILE: hen2164m.17o                      TIME: 14:16:00 UTC

SOFTWARE: page5 1603.24 master91.pl 160321    START: 2017/06/13 12:37:00  
EPHEMERIS: igr19532.eph [rapid]              STOP: 2017/06/13 14:47:00  
NAV FILE: brdc1640.17n                      OBS USED: 5957 / 6288 : 95%  
ANT NAME: NONE                      NONE                      # FIXED AMB: 34 / 35 : 97%  
ARP HEIGHT: 1.5                      OVERALL RMS: 0.014(m)

REF FRAME: NAD\_83(2011)(EPOCH:2010.0000)                      IGS08 (EPOCH:2017.4481)

X: 897612.017(m) 0.003(m)                      897611.223(m) 0.003(m)  
Y: -5635322.223(m) 0.017(m)                      -5635320.636(m) 0.017(m)  
Z: 2839632.104(m) 0.003(m)                      2839631.933(m) 0.003(m)

LAT: 26 36 35.73882    0.008(m)                      26 36 35.75848    0.008(m)  
E LON: 279 3 0.81572    0.005(m)                      279 3 0.79639    0.005(m)  
W LON: 80 56 59.18428    0.005(m)                      80 56 59.20361    0.005(m)  
EL HGT:                      -16.703(m) 0.014(m)                      -18.293(m) 0.014(m)

ORTHO HGT:                      8.024(m) 0.028(m) [NAVD88 (Computed using GEOID12B)] **26.2335**

UTM COORDINATES    STATE PLANE COORDINATES

	UTM (Zone 17)	SPC (0901 FL E)	
Northing (Y) [meters]	2943233.293	252187.357	<b>Y=827384.6870908332</b>
Easting (X) [meters]	505000.320	205002.026	<b>X=672577.4803016666</b>
Convergence [degrees]	0.02249720	0.02249720	
Point Scale	0.99960031	0.99994149	
Combined Factor	0.99960293	0.99994411	

US NATIONAL GRID DESIGNATOR: 17RNK0500043233(NAD 83)

BASE STATIONS USED

PID	DESIGNATION	LATITUDE	LONGITUDE	DISTANCE(m)
DG4691	FMYR FORT MYERS CORS ARP	N263527.507	W0815150.972	91098.8
DE9138	OKCB OKEECHOBEE CORS ARP	N271557.715	W0805119.181	73300.0

DG9798 PBCH WEST PALM CORS ARP

N265046.638 W0801309.299 77254.9

NEAREST NGS PUBLISHED CONTROL POINT

AI1525 HEN 28

N263637. W0805700. 44.9

This position and the above vector components were computed without any knowledge by the National Geodetic Survey regarding the equipment or field operating procedures used.



From: opus  
To: Ehmke, Howard  
Subject: OPUS-RS solution : PW1.tps OP1497881860707  
Date: Monday, June 19, 2017 10:21:26 AM

---

FILE: PW1.tps OP1497881860707

1009 WARNING! No antenna type was selected. No antenna offsets or  
1009 pattern will be applied. Coordinates with reduced accuracy  
1009 will be returned for the antenna phase center.  
1009

NGS OPUS-RS SOLUTION REPORT  
=====

All computed coordinate accuracies are listed as 1-sigma RMS values.  
For additional information: <https://www.ngs.noaa.gov/OPUS/about.jsp#accuracy>

USER: hehmke@sfwmd.gov                      DATE: June 19, 2017  
RINEX FILE: pw1\_164p.17o                    TIME: 14:21:04 UTC

SOFTWARE: rsgps 1.38 RS97.prl 1.99.3      START: 2017/06/13 15:01:05  
EPHEMERIS: igr19532.eph [rapid]          STOP: 2017/06/13 16:15:39  
NAV FILE: brdc1640.17n                    OBS USED: 5720 / 7112 : 80%  
ANT NAME: NONE                            QUALITY IND. 16.90/ 73.92  
ARP HEIGHT: 1.5                            NORMALIZED RMS: 0.387

REF FRAME: NAD\_83(2011)(EPOCH:2010.0000)      IGS08 (EPOCH:2017.44836)

X: 897666.595(m) 0.011(m)      897665.801(m) 0.011(m)  
Y: -5635407.033(m) 0.066(m)      -5635405.446(m) 0.066(m)  
Z: 2839441.499(m) 0.036(m)      2839441.328(m) 0.036(m)

LAT: 26 36 28.85785 0.011(m)      26 36 28.87751 0.011(m)  
E LON: 279 3 2.28172 0.006(m)      279 3 2.26238 0.006(m)  
W LON: 80 56 57.71828 0.006(m)      80 56 57.73762 0.006(m)

EL HGT: -19.516(m) 0.075(m)      -21.105(m) 0.075(m)  
ORTHO HGT: 5.211(m) 0.076(m) [NAVD88 (Computed using GEOID12B)] **16.847**

UTM COORDINATES      STATE PLANE COORDINATES

	UTM (Zone 17)	SPC (0901 FL E)	
Northing (Y) [meters]	2943021.618	251975.610	<b>Y= 826689.9804749999</b>
Easting (X) [meters]	505040.944	205042.665	<b>X= 672710.8100874999</b>
Convergence [degrees]	0.02267809	0.02267809	
Point Scale	0.99960031	0.99994149	
Combined Factor	0.99960337	0.99994456	

US NATIONAL GRID DESIGNATOR: 17RNK0504043021(NAD 83)

BASE STATIONS USED

PID	DESIGNATION	LATITUDE	LONGITUDE	DISTANCE(m)
DF7050	MTNT MIAMI TNT CORS ARP	N255156.760	W0805425.186	82343.1
DG4691	FMYR FORT MYERS CORS ARP	N263527.507	W0815150.972	91135.5

DH3757 WACH WAUCHULA CORS ARP	N273051.042 W0815256.615 136555.2
DG9798 PBCH WEST PALM CORS ARP	N265046.638 W0801309.299 77289.5
DH3834 LAUD LAUDERDALE CORS ARP	N261146.341 W0801023.014 89893.6
DP8348 MKEY MARATHON KEY CORS ARP	N244335.260 W0810252.170 208668.4
DF7990 ZEFR ZEPHYRHILLS CORS ARP	N281339.322 W0820952.671 215969.0
DF9225 ZMA1 MIAMI WAAS 1 CORS ARP	N254928.585 W0801909.066 107233.1

NEAREST NGS PUBLISHED CONTROL POINT

AI1525 HEN 28	N263637. W0805700. 258.4
---------------	--------------------------

This position and the above vector components were computed without any knowledge by the National Geodetic Survey regarding the equipment or field operating procedures used.



From: opus  
To: Ehmke, Howard  
Subject: OPUS-RS solution : GW3\_4.tps OP1497881697613  
Date: Monday, June 19, 2017 10:19:12 AM

---

FILE: GW3\_4.tps OP1497881697613

1009 WARNING! No antenna type was selected. No antenna offsets or  
1009 pattern will be applied. Coordinates with reduced accuracy  
1009 will be returned for the antenna phase center.  
1009

NGS OPUS-RS SOLUTION REPORT

=====

All computed coordinate accuracies are listed as 1-sigma RMS values.  
For additional information: <https://www.ngs.noaa.gov/OPUS/about.jsp#accuracy>

USER: hehmke@sfwmd.gov                      DATE: June 19, 2017  
RINEX FILE: gw3\_164p.17o                      TIME: 14:18:50 UTC

SOFTWARE: rsgps 1.38 RS55.prl 1.99.3              START: 2017/06/13 15:11:06  
EPHEMERIS: igr19532.eph [rapid]                  STOP: 2017/06/13 16:15:33  
NAV FILE: brdc1640.17n                      OBS USED: 5724 / 6921 : 83%  
ANT NAME: NONE                              QUALITY IND. 14.75/ 27.27  
ARP HEIGHT: 1.5                              NORMALIZED RMS: 0.412

REF FRAME: NAD\_83(2011)(EPOCH:2010.0000)              IGS08 (EPOCH:2017.44837)

X: 897670.978(m) 0.009(m)              897670.184(m) 0.009(m)  
Y: -5635398.736(m) 0.031(m)              -5635397.149(m) 0.031(m)  
Z: 2839455.036(m) 0.017(m)              2839454.865(m) 0.017(m)

LAT: 26 36 29.36030 0.011(m)              26 36 29.37996 0.011(m)  
E LON: 279 3 2.48533 0.006(m)              279 3 2.46604 0.006(m)  
W LON: 80 56 57.51467 0.006(m)              80 56 57.53396 0.006(m)  
EL HGT: -20.162(m) 0.034(m)              -21.752(m) 0.034(m)  
ORTHO HGT: 4.565(m) 0.037(m) [NAVD88 (Computed using GEOID12B)] **14.856**

UTM COORDINATES    STATE PLANE COORDINATES

	UTM (Zone 17)	SPC (0901 FL E)	
Northing (Y) [meters]	2943037.078	251991.075	<b>Y= 826740.7185624999</b>
Easting (X) [meters]	505046.569	205048.292	<b>X= 672729.2713366666</b>
Convergence [degrees]	0.02270353	0.02270353	
Point Scale	0.99960031	0.99994149	
Combined Factor	0.99960348	0.99994466	

US NATIONAL GRID DESIGNATOR: 17RNK0504643037(NAD 83)

BASE STATIONS USED

PID	DESIGNATION	LATITUDE	LONGITUDE	DISTANCE(m)
DE9138	OKCB OKEECHOBEE CORS ARP	N271557.715	W0805119.181	73488.8
DF7050	MTNT MIAMI TNT CORS ARP	N255156.760	W0805425.186	82358.2

DG4691 FMYR FORT MYERS CORS ARP	N263527.507 W0815150.972	91141.3
DH3757 WACH WAUCHULA CORS ARP	N273051.042 W0815256.615	136547.6
DG9798 PBCH WEST PALM CORS ARP	N265046.638 W0801309.299	77278.8
DH3834 LAUD LAUDERDALE CORS ARP	N261146.341 W0801023.014	89896.6
DP8348 MKEY MARATHON KEY CORS ARP	N244335.260 W0810252.170	208684.1
DF7990 ZEFR ZEPHYRHILLS CORS ARP	N281339.322 W0820952.671	215959.2
DF9225 ZMA1 MIAMI WAAS 1 CORS ARP	N254928.585 W0801909.066	107242.3

NEAREST NGS PUBLISHED CONTROL POINT

AI1525	HEN 28	N263637.	W0805700.	245.0
--------	--------	----------	-----------	-------

This position and the above vector components were computed without any knowledge by the National Geodetic Survey regarding the equipment or field operating procedures used.



From: opus  
To: Ehmke, Howard  
Subject: OPUS solution : HEN28.tps OP1497881718549  
Date: Monday, June 19, 2017 10:16:22 AM

---

FILE: HEN28.tps OP1497881718549

1009 WARNING! No antenna type was selected. No antenna offsets or  
1009 pattern will be applied. Coordinates with reduced accuracy  
1009 will be returned for the antenna phase center.  
1009

NGS OPUS SOLUTION REPORT  
=====

All computed coordinate accuracies are listed as peak-to-peak values.  
For additional information: <https://www.ngs.noaa.gov/OPUS/about.jsp#accuracy>

USER: hehmke@sfwmd.gov                      DATE: June 19, 2017  
RINEX FILE: hen2164m.17o                      TIME: 14:16:00 UTC

SOFTWARE: page5 1603.24 master91.pl 160321    START: 2017/06/13 12:37:00  
EPHEMERIS: igr19532.eph [rapid]              STOP: 2017/06/13 14:47:00  
NAV FILE: brdc1640.17n                      OBS USED: 5957 / 6288 : 95%  
ANT NAME: NONE                      NONE                      # FIXED AMB: 34 / 35 : 97%  
ARP HEIGHT: 1.5                      OVERALL RMS: 0.014(m)

REF FRAME: NAD\_83(2011)(EPOCH:2010.0000)              IGS08 (EPOCH:2017.4481)

X: 897612.017(m) 0.003(m)              897611.223(m) 0.003(m)  
Y: -5635322.223(m) 0.017(m)              -5635320.636(m) 0.017(m)  
Z: 2839632.104(m) 0.003(m)              2839631.933(m) 0.003(m)

LAT: 26 36 35.73882    0.008(m)              26 36 35.75848    0.008(m)  
E LON: 279 3 0.81572    0.005(m)              279 3 0.79639    0.005(m)  
W LON: 80 56 59.18428    0.005(m)              80 56 59.20361    0.005(m)  
EL HGT:              -16.703(m) 0.014(m)              -18.293(m) 0.014(m)

ORTHO HGT:              8.024(m) 0.028(m) [NAVD88 (Computed using GEOID12B)] **26.2335**

UTM COORDINATES    STATE PLANE COORDINATES

	UTM (Zone 17)	SPC (0901 FL E)	
Northing (Y) [meters]	2943233.293	252187.357	<b>Y=827384.6870908332</b>
Easting (X) [meters]	505000.320	205002.026	<b>X=672577.4803016666</b>
Convergence [degrees]	0.02249720	0.02249720	
Point Scale	0.99960031	0.99994149	
Combined Factor	0.99960293	0.99994411	

US NATIONAL GRID DESIGNATOR: 17RNK0500043233(NAD 83)

BASE STATIONS USED

PID	DESIGNATION	LATITUDE	LONGITUDE	DISTANCE(m)
DG4691	FMYR FORT MYERS CORS ARP	N263527.507	W0815150.972	91098.8
DE9138	OKCB OKEECHOBEE CORS ARP	N271557.715	W0805119.181	73300.0

DG9798 PBCH WEST PALM CORS ARP

N265046.638 W0801309.299 77254.9

NEAREST NGS PUBLISHED CONTROL POINT

AI1525 HEN 28

N263637. W0805700. 44.9

This position and the above vector components were computed without any knowledge by the National Geodetic Survey regarding the equipment or field operating procedures used.



# Office

## Project

9 June 2017

### INPUT

Geographic, flhpgn - Florida HPGN  
Vertical - NAVD88, U.S. Feet

### OUTPUT

State Plane, flhpgn - Florida HPGN  
0901 - Florida East, U.S. Feet  
Vertical - NGVD29 (Custom), U.S. Feet

---

### INJ BM 06

1/1

**Latitude:** 26 36 29.70  
**Longitude:** 80 56 58.39  
**Elevation/Z:** 0

**Northing/Y:** 826774.985  
**Easting/X:** 672649.811  
**Elevation/Z:** 1.378  
**Convergence:** 0 01 21.34093  
**Scale Factor:** 0.999941488  
**Combined Factor:** 0.999945299

---

Remark:

Corpscon v6.0.1, U.S. Army Corps of Engineers

# DBHYDRO | by station

## STATION INFORMATION

Station	L2-PW1
Site	L2GW
Type	WELL
Latitude (ddmmss.sss)	263627.433
Longitude (ddmmss.sss)	805657.397
X Coord (ft) NAD83	672708.954
Y Coord (ft) NAD83	826685.164
County	Hendry
Basin	S-3_8
Section	4
Township	45
Range	34
Show Map	<a href="#">Google Map</a>
Well Info	<a href="#">Info</a>
Description	L2 CANAL FLORIDAN AQ TEST PRODUCTION WELL NO. 1
Notes	
Nearby Stations	<a href="#">Nearby Stations</a>
Attachments	<a href="#">Show Attachments</a>

Query returned 1 station record(s).

Get Sample Data

Get Time Series Data



# DBHYDRO | by station

## STATION INFORMATION

Station	L2-PW2
Site	L2GW
Type	WELL
Latitude (ddmmss.sss)	263628.811
Longitude (ddmmss.sss)	805657.738
X Coord (ft) NAD83	672708.954
Y Coord (ft) NAD83	826685.164
County	Henry
Basin	S-3_8
Section	4
Township	45
Range	34
Show Map	<a href="#">Google Map</a>
Well Info	<a href="#">Info</a>
Description	SFWMD UPPER FLORIDAN TEST PRODUCTION WELL: L2 CANAL
Notes	
Nearby Stations	<a href="#">Nearby Stations</a>
Attachments	<a href="#">Show Attachments</a>

Query returned 1 station record(s).

Get Sample Data

Get Time Series Data

# DBHYDRO | by station

## STATION INFORMATION

Station	HE-907
Site	L2GW
Type	WELL
Latitude (ddmmss.sss)	263631.4
Longitude (ddmmss.sss)	805657.6
X Coord (ft) NAD83	672721.376
Y Coord (ft) NAD83	826946.576
County	Hendry
Basin	S-3_8
Section	4
Township	45
Range	34
Show Map	<a href="#">Google Map</a>
Well Info	<a href="#">Info</a>
Description	L2GW SURFICIAL GW WELL #3
Notes	
Nearby Stations	<a href="#">Nearby Stations</a>
Attachments	<a href="#">Show Attachments</a>

Query returned 1 station record(s).

Get Time Series Data



# DBHYDRO | by station

## STATION INFORMATION

Station	HE-908
Site	L2GW
Type	WELL
Latitude (ddmmss.sss)	263631.4
Longitude (ddmmss.sss)	805657.6
X Coord (ft) NAD83	672721.376
Y Coord (ft) NAD83	826946.576
County	Hendry
Basin	S-3_8
Section	4
Township	45
Range	34
Show Map	<a href="#">Google Map</a>
Well Info	<a href="#">Info</a>
Description	L2GW SURFICIAL GW WELL #4
Notes	
Nearby Stations	<a href="#">Nearby Stations</a>
Attachments	<a href="#">Show Attachments</a>

Query returned 1 station record(s).

[Get Time Series Data](#)

# DBHYDRO | by station

## STATION INFORMATION

Station	HE-909
Site	L2GW
Type	WELL
Latitude (ddmmss.sss)	263631.4
Longitude (ddmmss.sss)	805657.6
X Coord (ft) NAD83	672721.376
Y Coord (ft) NAD83	826946.576
County	Hendry
Basin	S-3_8
Section	4
Township	45
Range	34
Show Map	<a href="#">Google Map</a>
Well Info	<a href="#">Info</a>
Description	L2GW SURFICIAL GW WELL #5; USGS WELL HE-909, SFWMD W-101
Notes	
Nearby Stations	<a href="#">Nearby Stations</a>
Attachments	<a href="#">Show Attachments</a>

Query returned 1 station record(s).

Get Time Series Data



# REGISTRATION WORKSHEET - L2GW Addendum

Site Name: **L2GW** Today's Date: **4/22/2017** Type Recorder: \_\_\_\_\_  
 Activity: **Addendum** Effective Date: \_\_\_\_\_ Start Date of Data : \_\_\_\_\_  
 Customer: **Steve Krupa** Bus. Area: **5720** Agency: **SFWMD** Internal Order: \_\_\_\_\_  
 Project Manager: **Howard Ehmke** Bus. Area: **Survey & Mapping** Agency: **SFWMD** Fund: \_\_\_\_\_  
 Contract #: \_\_\_\_\_  
 Project Name: \_\_\_\_\_ Legal Mandate: \_\_\_\_\_

Short Common Name / Description: \_\_\_\_\_

Proj. Mgr. Notes: This addendum was performed to add NAVD 88 surveying data for the reference elevation. To convert to NGVD 29 add +1.378ft.

Site Directions: From the intersection of County Road 835 and South Florida Water Management District's Levee 1, go south on SFWMD's Levee 1 for 1.1 miles; turn into the field and go 69 feet to L2-PW2 well and station location.

Site Address (if any): \_\_\_\_\_

Transportation: \_\_\_\_\_ Lock type or combination: \_\_\_\_\_ # \_\_\_\_\_

Recorder Location/Purpose: \_\_\_\_\_ Structure Type: \_\_\_\_\_

Array ID Configuration table attached \_\_\_\_\_

### SURVEY INFORMATION

B.M. Elevation: **16.356** Date: **1/14/1999** Stamp: **NAVD 88 EL16.36 NGVI**  
 Agency: **SFWMD** Type: **BRASS** Datum: **NAVD 88**

Benchmark Location/ Description: Station is a brass cap located on the concrete pad 1.4 feet northeast of L2-PW2 well.

### COMMUNICATIONS INFORMATION

Communications System: \_\_\_\_\_ Loggernet Server: \_\_\_\_\_ Loggernet IP Address: \_\_\_\_\_

Tower: \_\_\_\_\_ Communication Type: \_\_\_\_\_ R.F. Code/Modem Address: \_\_\_\_\_ R.F. Access Point: \_\_\_\_\_

Phone Number: \_\_\_\_\_

RTU Address: \_\_\_\_\_ Gateways: \_\_\_\_\_

### WELL INFORMATION

Sensor	Customer Ref	Ref Elev	Elev Date	Top of Well	Bottom of Well	Ground Elev	Benchmark Elev	Benchmark Datum	Ref Elevation Location
GW1	L2-PW1	22.05	6/13/2017	22.05		16.5	16.36	NAVD 88	Top of 90° elbow below the transducer
GW2	L2-PW2	20.56	6/13/2017	20.56		16.2	16.36	NAVD 88	Top of 90° elbow below the transducer
GW3	HE-907	18.5	6/13/2017	18.5		16	16.36	NAVD 88	Top of Well Pipe
GW4	HE-908	18.54	6/13/2017	18.54		16	16.36	NAVD 88	Top of PVC Well pipe
GW5	HE-909	20.47	6/13/2017			16	16.36	NAVD 88	Mark near the top of the well

Sensor	GW Sensor Location Offset	Meas Pt Elevation	GW Land Elevation	Depth of Well	Type of Well	Top of Monitored Interval	Base of Monitored Interval	Parameter Transmitted							
GW1															
GW2															
GW3															
GW4															
GW5															

### COORDINATE INFORMATION

Item/Param	Lat	Long	X-Coord	Y-Coord	Sec	Township	Range	Quad	Basin	County	Description
GW1	26 36 28.86	80 56 57.72			4	45	34			Hendry	
GW2	26 36 28.778	80 56 57.949			4	45	34			Hendry	
GW3	26 36 29.4	80 56 57.5			4	45	34			Hendry	
GW4	26 36 29.4	80 56 57.5			4	45	34			Hendry	
GW5	26 36 29.4	80 56 57.5								Hendry	