

APPENDIX D

GEOPHYSICAL LOGS

DUAL INDUCTION
LL3, SP
LOG

Company: Lake Worth Utilities
Well: F-1
Field: Lake Worth
County: Palm Beach
Location: City of Lake Worth
Water Treatment Plant
JLA Geosciences, Inc.

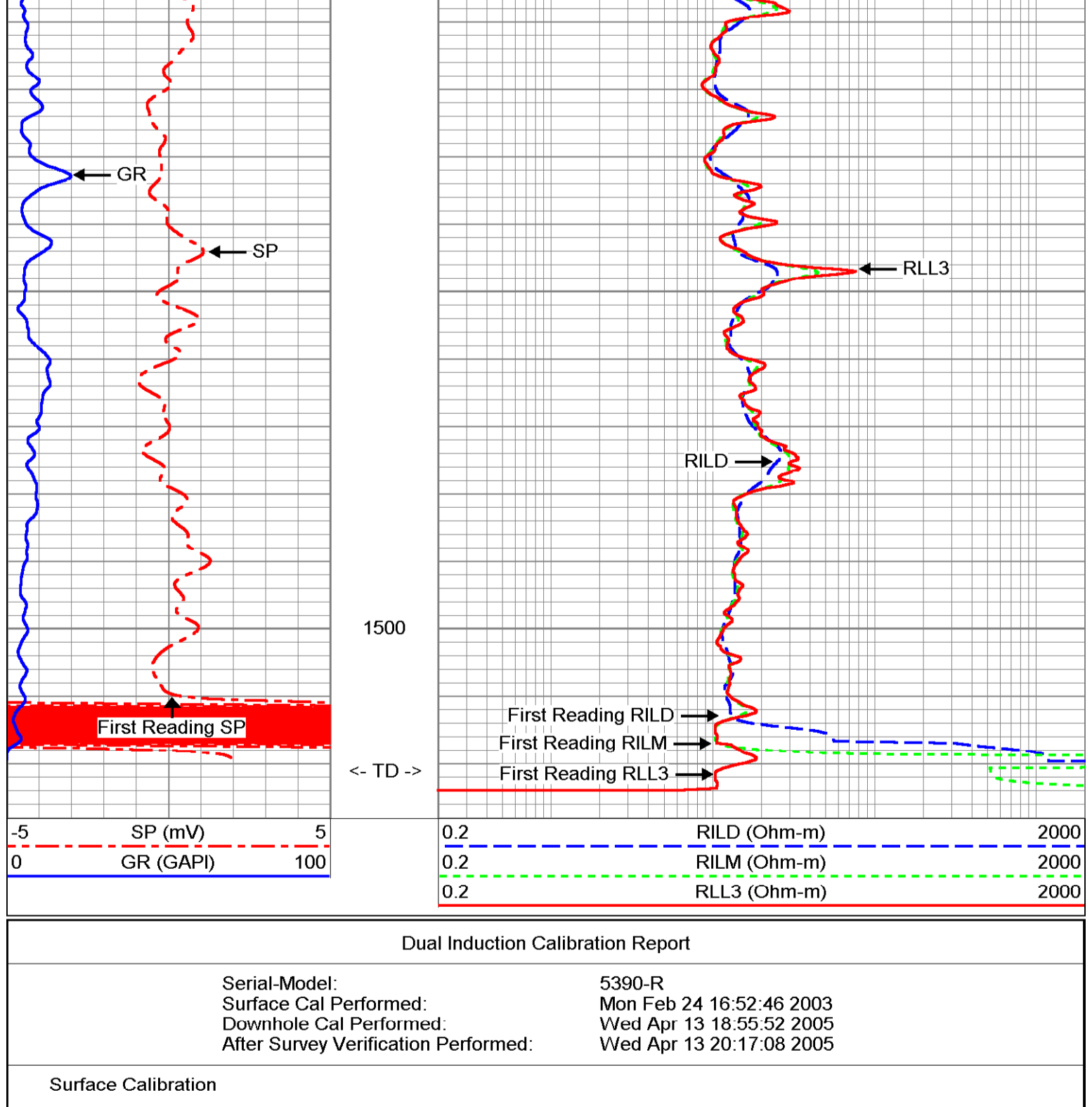
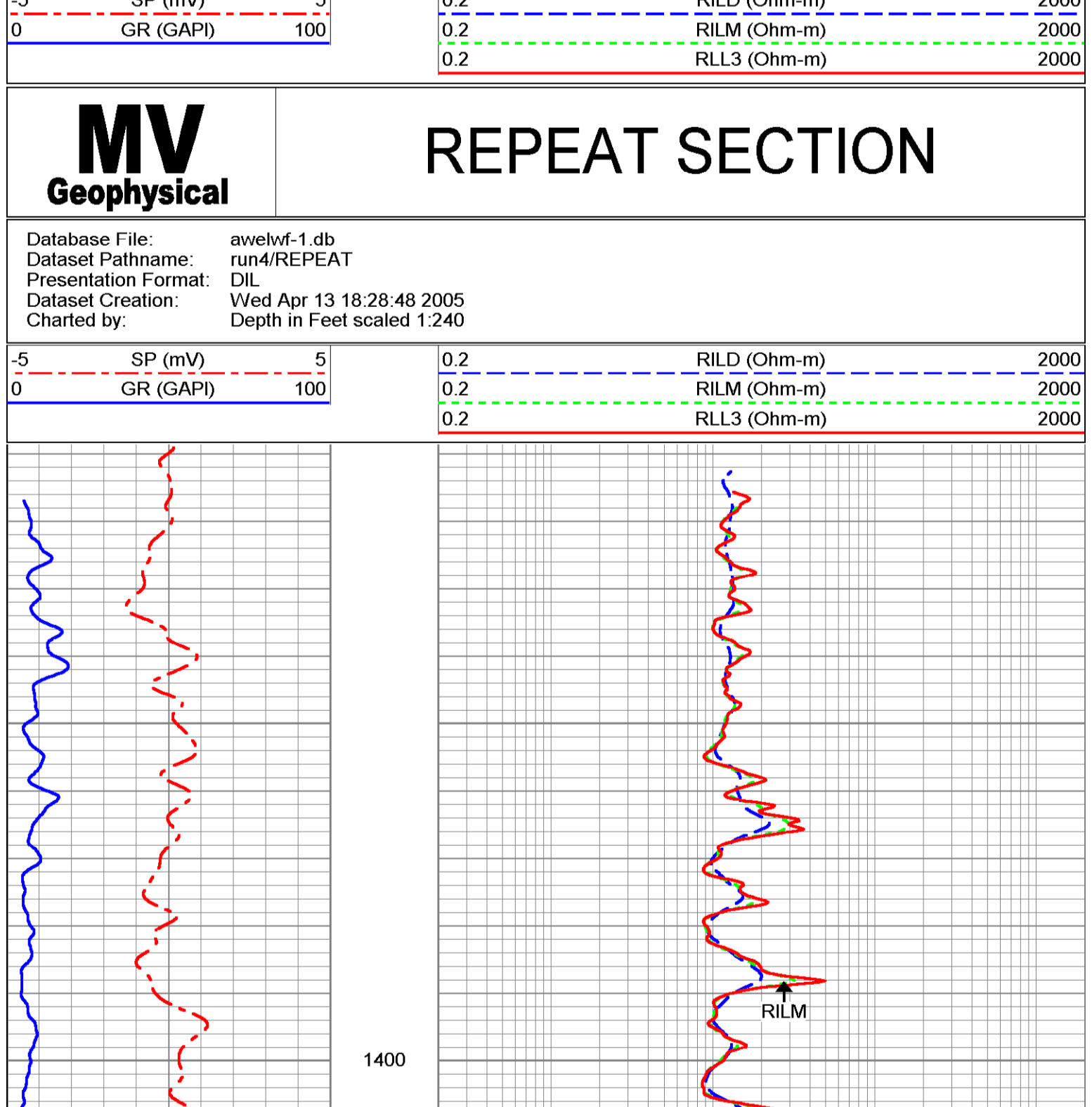
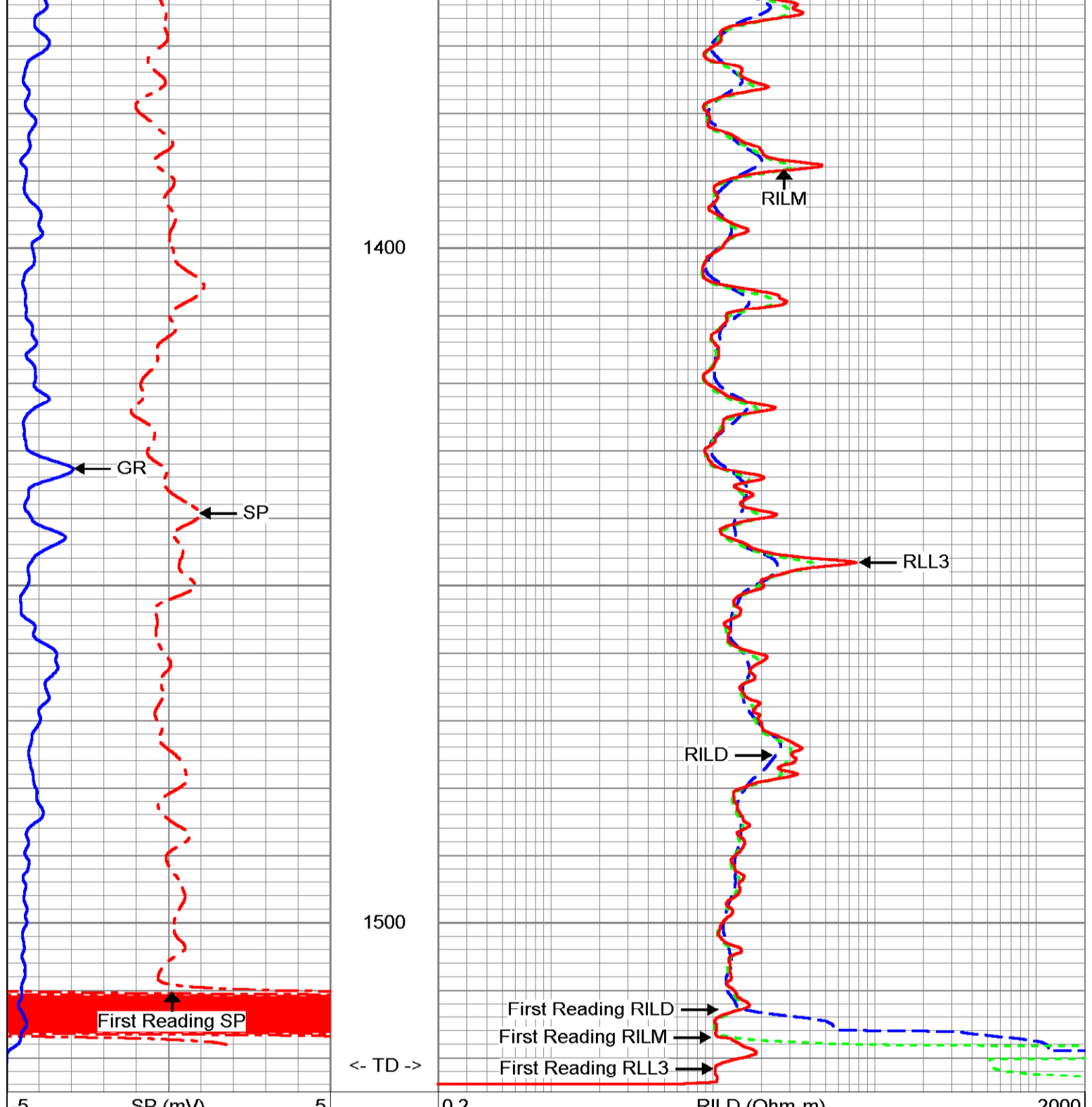
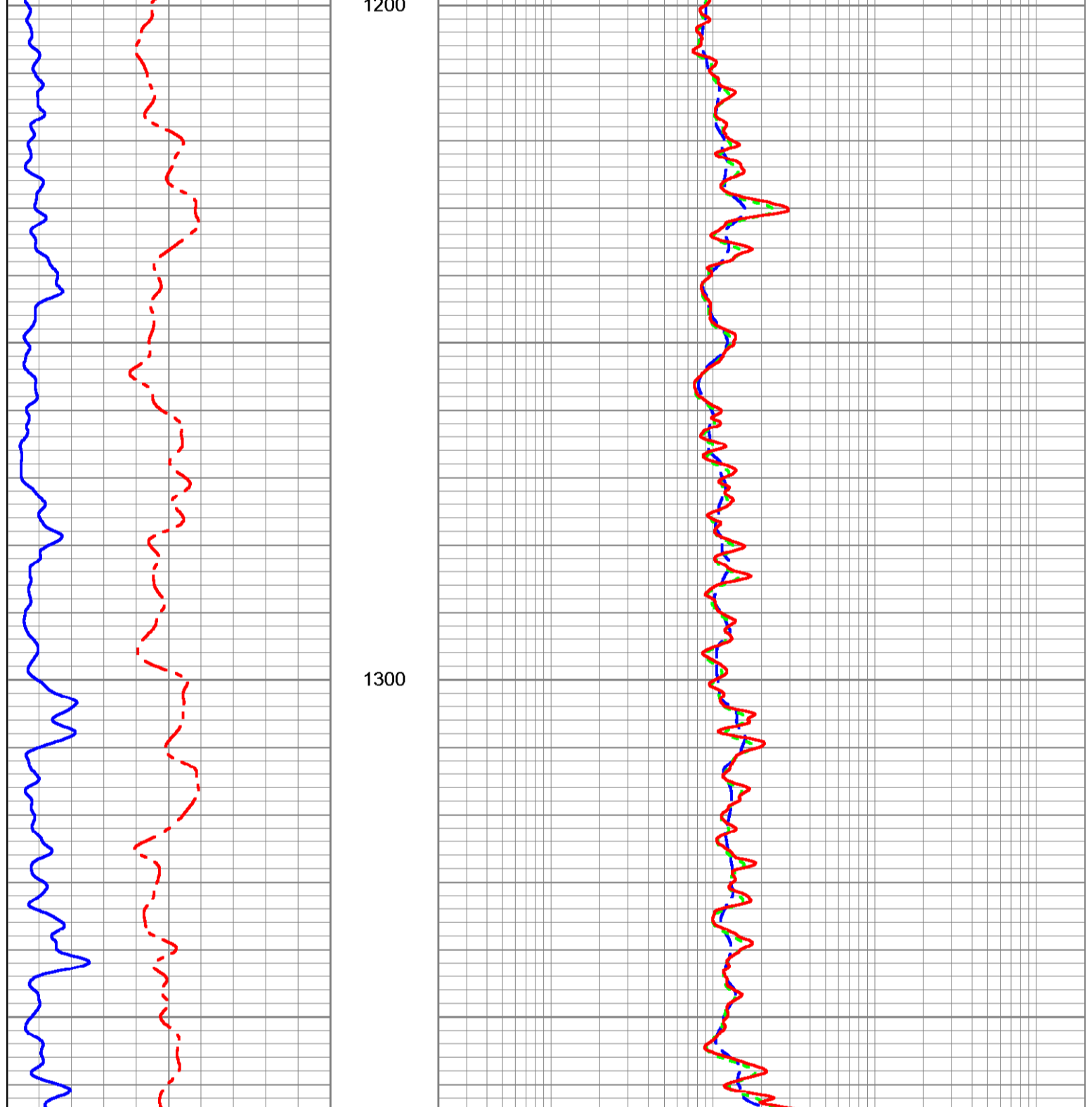
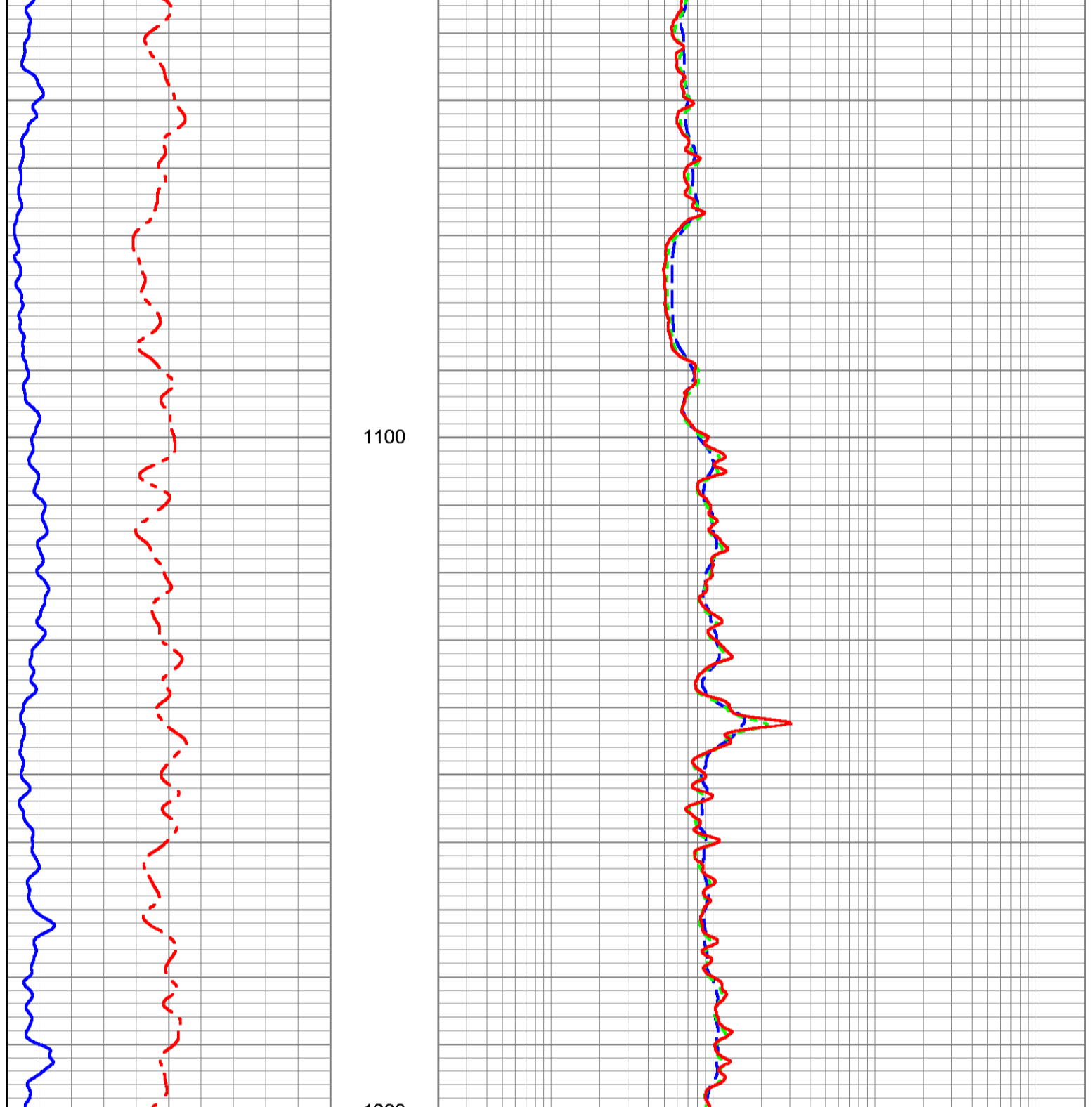
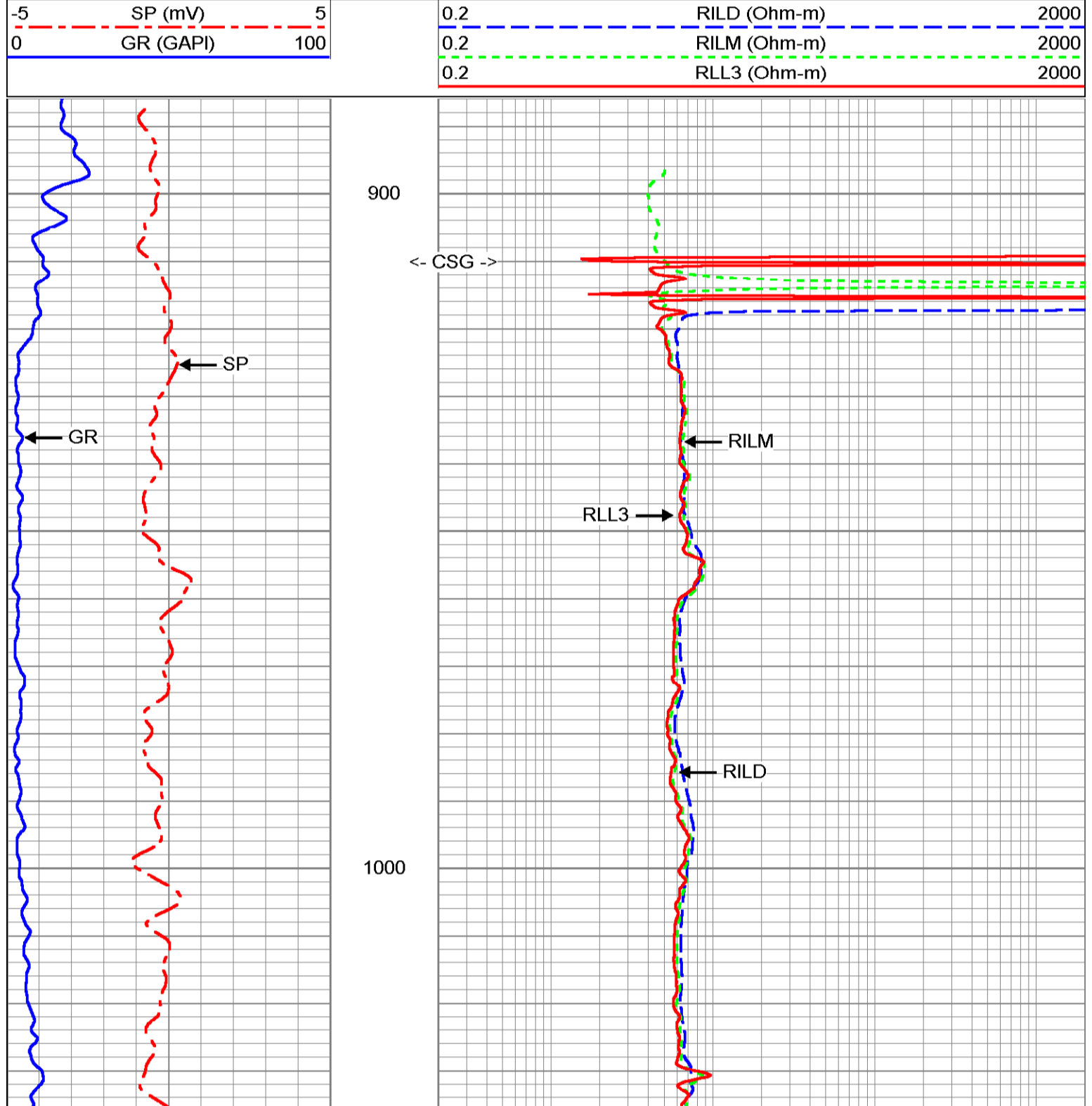
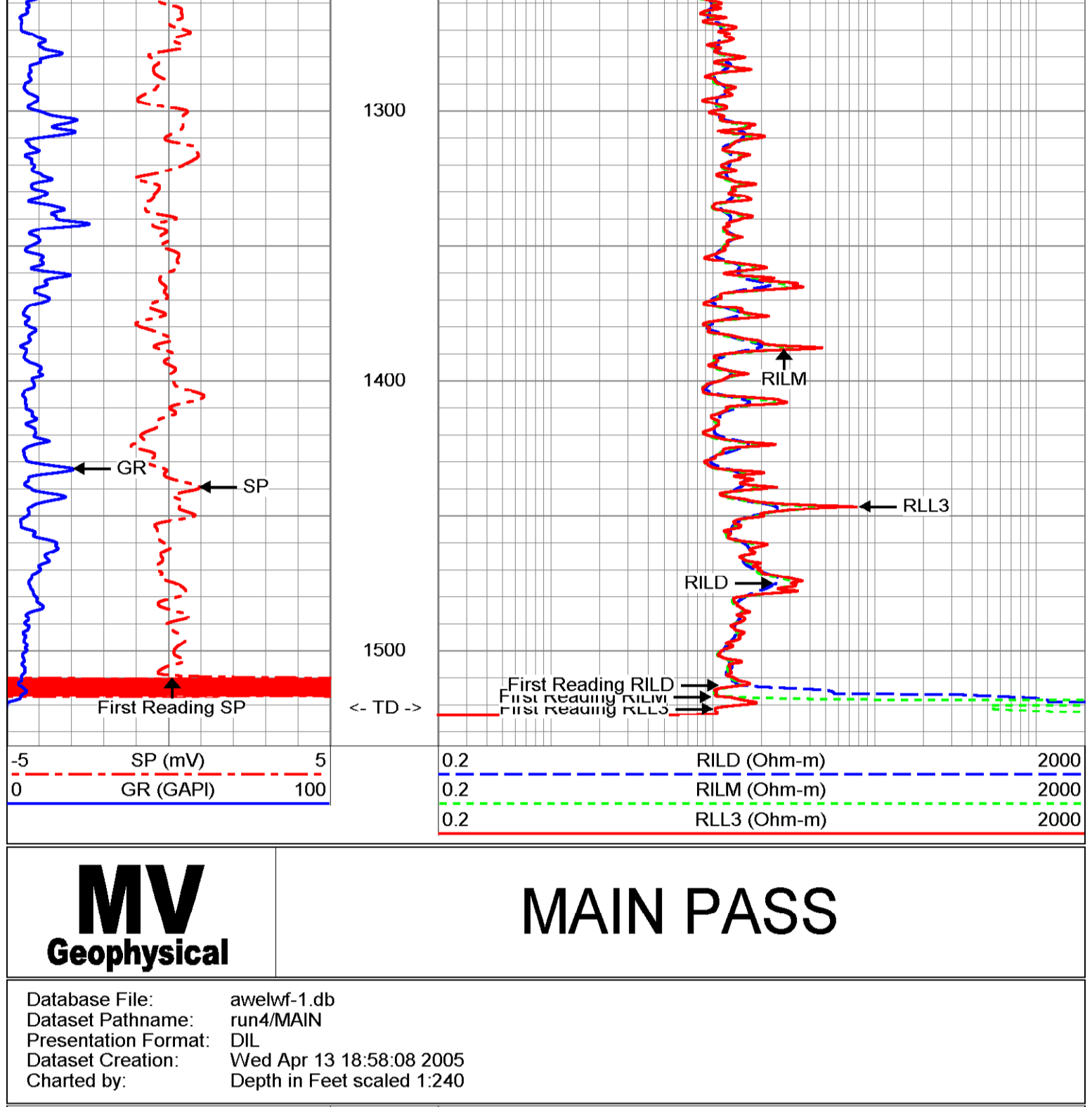
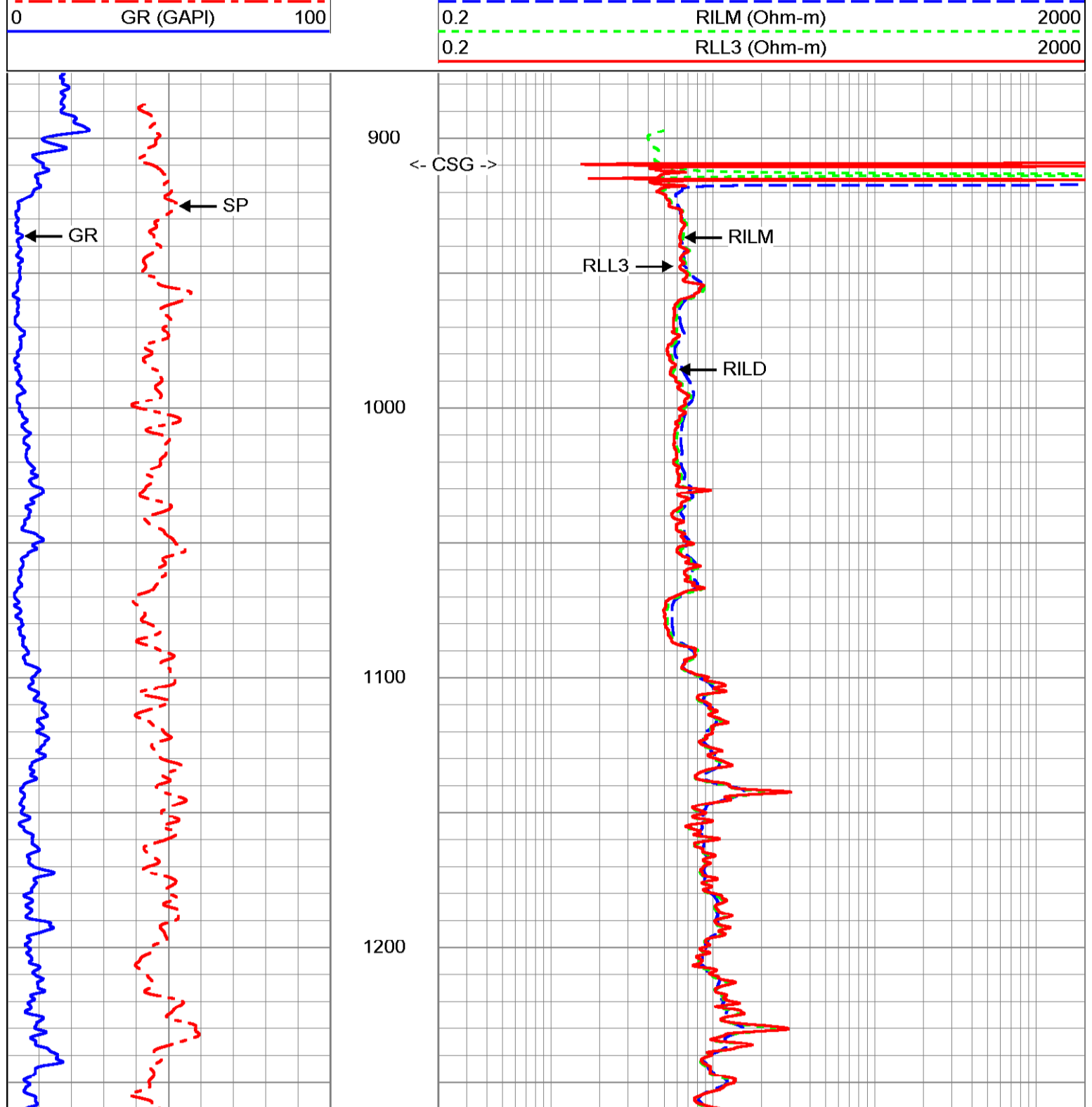
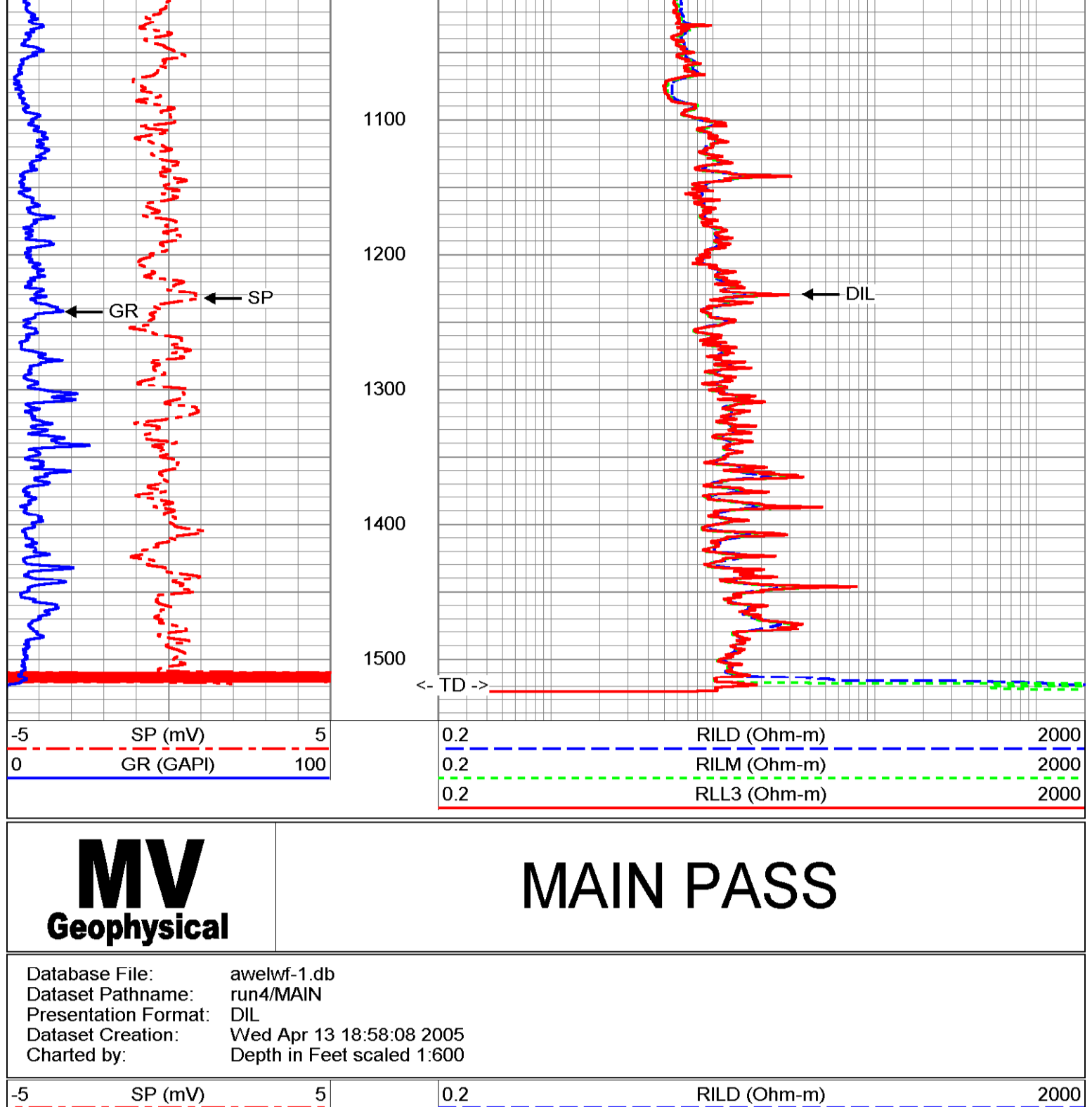
Company	Lake Worth Utilities	Well	F-1	Field	Lake Worth	County	Palm Beach	Location	City of Lake Worth
Water	State/Priv	Log Measured From	G.L.	Permanent Datum	G.L.	Log Measured From	G.L.	Drilling Measured From	G.L.
Bottom Loggers Interval	15.00'	Bottom Loggers Interval	15.00'	Bottom Loggers Interval	15.00'	Bottom Loggers Interval	15.00'	Bottom Loggers Interval	15.00'
Depth	15.00'	Depth	15.00'	Depth	15.00'	Depth	15.00'	Depth	15.00'
Drill Bit Size	4.00 in	Drill Bit Size	4.00 in	Drill Bit Size	4.00 in	Drill Bit Size	4.00 in	Drill Bit Size	4.00 in
Density / Viscosity	NA	Density / Viscosity	NA	Density / Viscosity	NA	Density / Viscosity	NA	Density / Viscosity	NA
Time Logged on Bottom	18.00	Time Logged on Bottom	18.00	Time Logged on Bottom	18.00	Time Logged on Bottom	18.00	Time Logged on Bottom	18.00
Time Used	18.00	Time Used	18.00	Time Used	18.00	Time Used	18.00	Time Used	18.00
Equipment Number	NA	Equipment Number	NA	Equipment Number	NA	Equipment Number	NA	Equipment Number	NA
Recommender	S. Miller	Recommender	S. Miller	Recommender	S. Miller	Recommender	S. Miller	Recommender	S. Miller
Witnessed By	Charles (AME)	Witnessed By	Charles (AME)	Witnessed By	Charles (AME)	Witnessed By	Charles (AME)	Witnessed By	Charles (AME)
Run Number	209571	Run Number	209571	Run Number	209571	Run Number	209571	Run Number	209571
Time	12:25	Time	12:25	Time	12:25	Time	12:25	Time	12:25
Surface	16.25'	Surface	16.25'	Surface	16.25'	Surface	16.25'	Surface	16.25'
FLC	16.25'	FLC	16.25'	FLC	16.25'	FLC	16.25'	FLC	16.25'
Size	18"	Size	18"	Size	18"	Size	18"	Size	18"
Weight	0.3125 lb	Weight	0.3125 lb	Weight	0.3125 lb	Weight	0.3125 lb	Weight	0.3125 lb
Friction String	18"	Friction String	18"	Friction String	18"	Friction String	18"	Friction String	18"
Line	209571	Line	209571	Line	209571	Line	209571	Line	209571

All interpretations are opinions based on inferences from electrical or other measurements and we cannot and do not guarantee the accuracy or correctness of any interpretation, and we shall not, except in the case of gross or willful negligence on our part, be liable or responsible for any loss, costs, damages, or expenses incurred or sustained by anyone resulting from any interpretation made by any of our officers, agents or employees. These interpretations are also subject to our general terms and conditions set out in our current Price Schedule.

Comments

Rw=1.663 OHM-M @ 76.1 degF

Drilling Contractor: All Webb Enterprises, Inc.



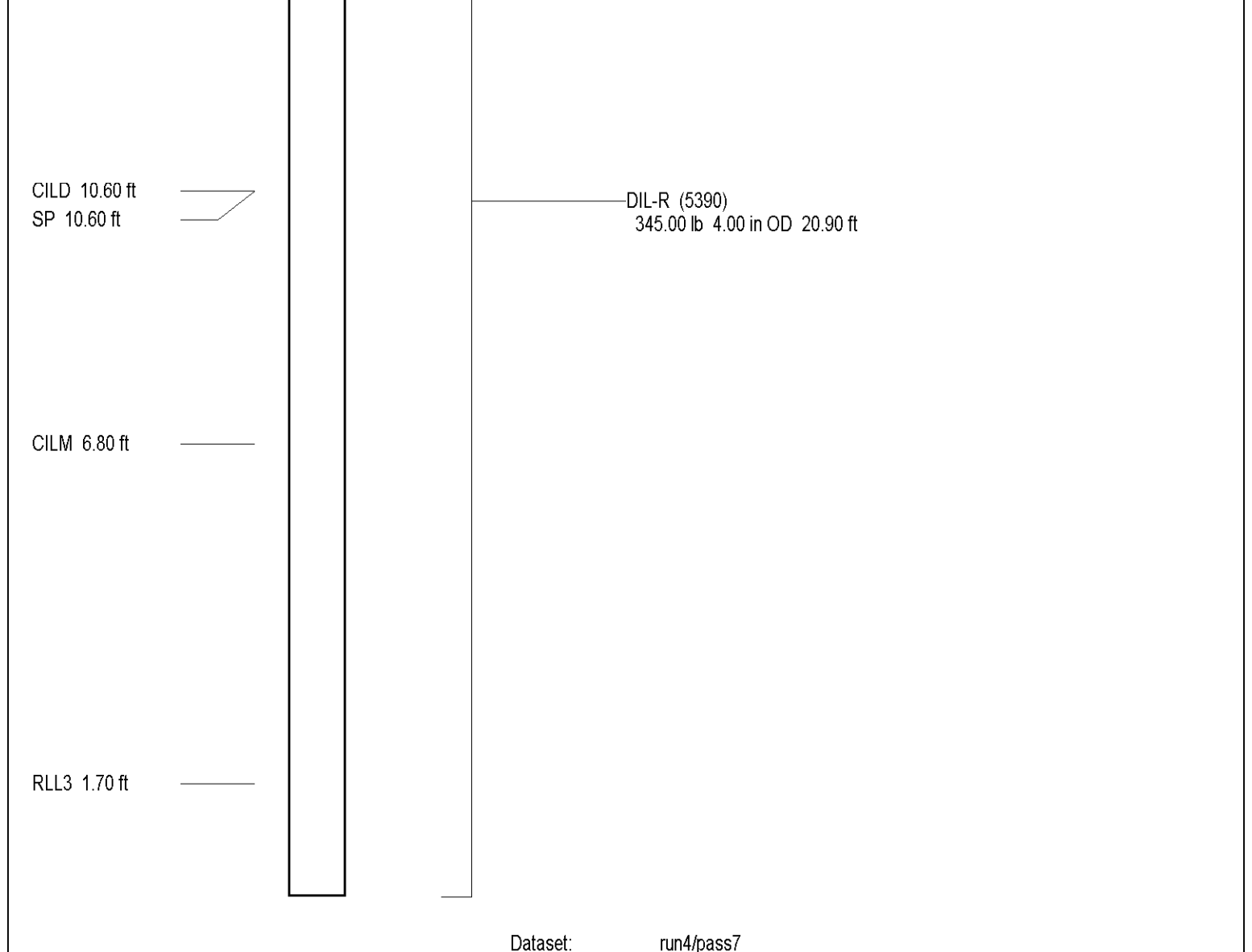
Dual Induction Calibration Report

Serial Model:	5390-R	Surface Cal Performed:	Mon Feb 24 16:52:46 2003
Downhole Cal Performed:	Wed Apr 13 18:55:52 2005	After Survey Verification Performed:	Wed Apr 13 20:17:08 2005

Surface Calibration				References				Results	
Loop:	Air	Loop		Air	Loop	mmho-m	m	b	
Deep	0.041	0.637	V	0.000	400.000	mmho-m	670.900	-27.223	
Medium	-0.006	0.700	V	0.000	464.000	mmho-m	656.366	4.251	
Internal:	Zero	Cal		Zero	Cal	m	m	b	
Deep	0.011	0.647	V	0.000	400.000	mmho-m	628.552	-6.783	
Medium	-0.011	0.749	V	0.000	464.000	mmho-m	610.612	6.720	

Downhole Calibration				References				Results	
Internal:	Zero	Cal		Zero	Cal	m	b		
Deep	-21.081	399.948	mmho-m	-19.983	406.966	mmho-m	1.014	1.394	
Medium	10.092	489.262	mmho-m	-2.972	495.796	mmho-m	1.047	-16.229	
Shallow	2.501	0.025	V	494.500	2.000	Ohm-m	198.903	-2.937	

After Survey Verification				Targets				Results	
Internal:	Zero	Cal		Zero	Cal	m'	b'		
Deep	-23.967	396.250	mmho-m	-21.080	399.948	mmho-m	1.014	1.394	
Medium	10.092	489.429	mmho-m	12.868	489.262	mmho-m	1.047	-16.229	
Shallow	495.193	1.941	Ohm-m	494.500	2.000	Ohm-m	0.998	0.062	



Dataset: run4/pass7
Total Length: 20.90 ft
Total Weight: 345.00 lb
O.D.: 4.00 in

Location: City of Lake Worth
Water Treatment Plant
JLA Geosciences, Inc.
Permanent Datum: G.L.
Elevation: 25
Log Measured From: G.L.
Drilling Measured From: G.L.
Other Services: DLI/SP, X/Y/C/R, FLOW

Date: 13-APR-2005
Run Number: F01UR
Depth: 1500'
Bottom Logged Interval: 1500'
Open Hole Size: 8.65"
Type of Log: VMAF
Type of Resistivity: NA
Type of Cement: NA
Estimated Cement Top: NA
Time Well Ready: 15:33:41/19:05

Equipment Number: 1533/413/05
Recorded By: F.M.S./S.M.H.
Witnessed By: CHIEF (AWE)
Run Number: 512
S.M./C.S.: 1330'
T.V.O.: 12.25"
THREH: 28"
F.C.U.R.: 16.25"
S.M.I.V.: 1500'
Casing and Surface String: 30"
Production String: 18"

Booth/Job Record: 75'
Size: 320'
Tubing Record: 10'
S.M./C.S.: 1040'
S.M.I.V.: 900'
WATER: 1500'
SURFACE: 200'
TEMP: 0.375' WT
910'

Run No: 2005071
FIELD PRINT

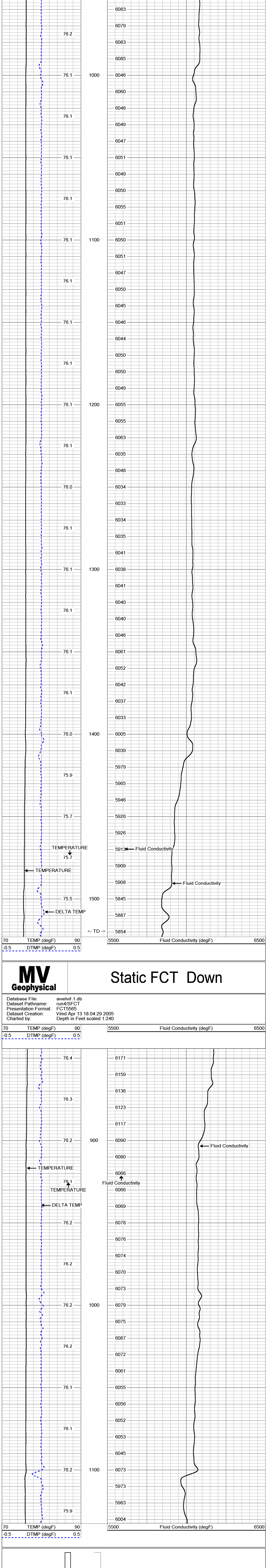
All interpretations are opinions based on inferences from electrical or other measurements and we cannot and do not guarantee the accuracy or correctness of any interpretation, and we shall not, except in the case of gross or willful negligence on our part, be liable or responsible for any loss, costs, damages, or expenses incurred or sustained by anyone resulting from any interpretation made by any of our officers, agents or employees. These interpretations are also subject to our general terms and conditions set out in our current Price Schedule.

Comments:
STATIC & DYNAMIC passes were performed.
Cw=6123 uS/Cm @ 76.1 degF (Dynamic Sample). Q=850 gpm.
FLUID RESISTIVITY CALIBRATION REPORT (Performed: 1-APR-05 11:00)
uS/cm CPS
3335.0 3305.33
4820.1 3030.12
6525.1 2891.11
TEMPERATURE CALIBRATION REPORT (Performed: 1-APR-04 11:45)
DEG-F CPS
34.1 2341.74
144.6 6951.41

Drilling Contractor: All Webb Enterprises, Inc.

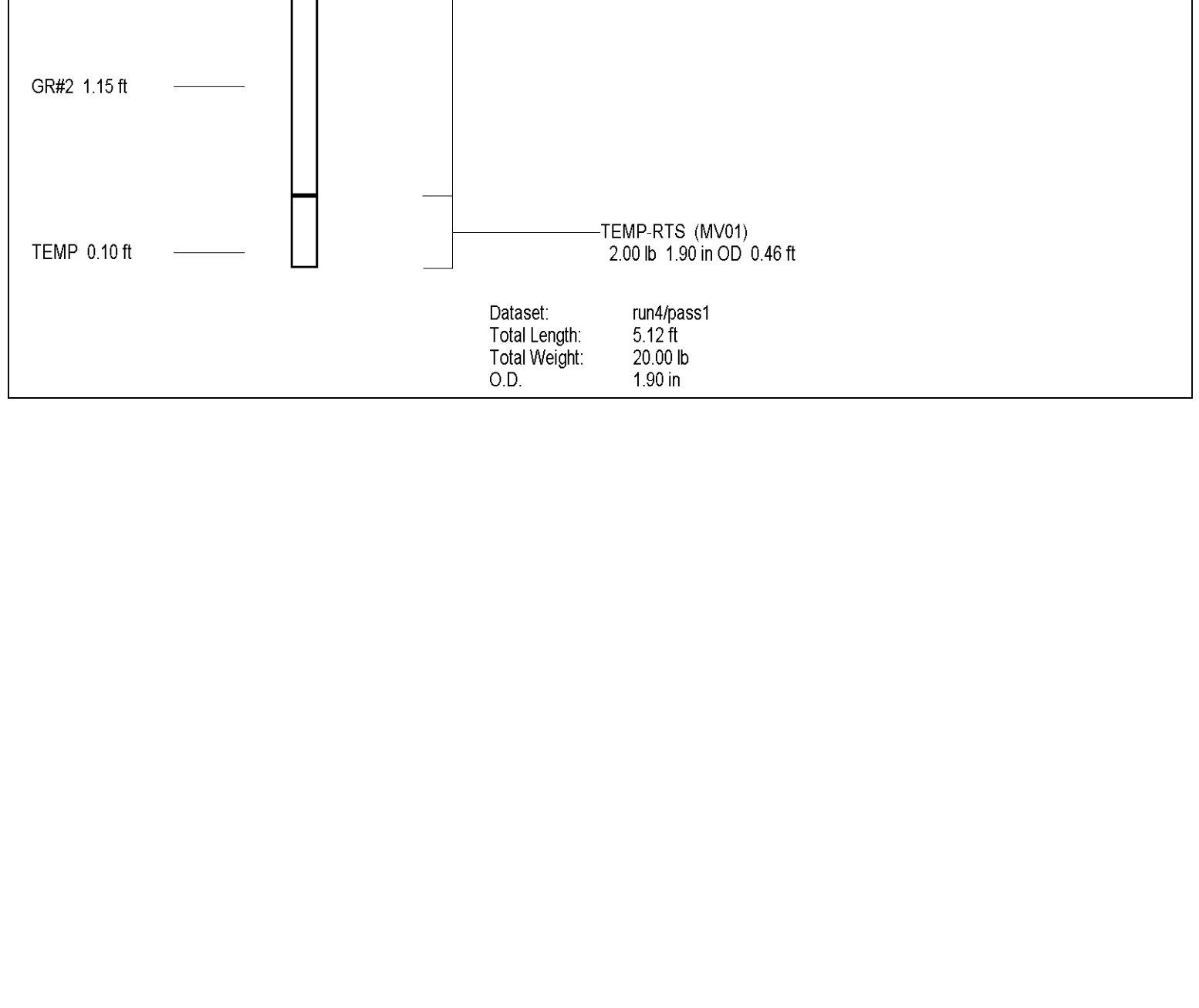
MV Geophysical **Dynamic FCT Up**

Database File: awelwf-1.db
Dataset Pathname: run4/D/FCT
Presentation Format: FCT15565
Dataset Creation: Wed Apr 13 17:55:32 2005
Charted by: Depth in Feet scaled 1:240



MV Geophysical **Static FCT Down**

Database File: awelwf-1.db
Dataset Pathname: run4/S/FCT
Presentation Format: FCT15565
Dataset Creation: Wed Apr 13 18:04:29 2005
Charted by: Depth in Feet scaled 1:240



Company	Lake Worth Utilities	Well	F-1
Field	Lake Worth	County	Palm Beach
Location	City of Lake Worth Water Treatment Plant	State/Prv	Florida
County	Palm Beach	Permanent Datum	G.L.
State/Prv	Florida	Log Measured From	G.L.
City of Lake Worth	Water Treatment Plant	Elevation	25'
JLA Geosciences, Inc.		K.B. 30'	Elevation
		D.L./S/P	
		XY/SR	
		FCT	
		Drilling Measured From	G.L.
		Date	13-APR-2005
Run Number	FOUR	Depth Other	1530'
Depth Logger	1530'	Depth Interval	1530'
Top of Interval	1845'	Open Hole Size	16.25"
Type Fluid	WATER	Density / Viscosity	NA/NA
Max. Recorded Temp.	NA	Estimated Cement Top	NA
Time Well Ready	ROA 4/13/05	Time Well Logged on Bottom	2:03:34 4/13/05
Time Well Logged	2:03:34 4/13/05	Time Well Logged	2:03:34 4/13/05
Location Number	FI Mares	Recorded By	S. Miller
Witnessed By	Charlie (AVE)	Checked By	Charlie (AVE)
Run Number	BI	From	To
ONE	12"	SURFACE	235'
THREE	12.25"	200'	900'
FOUR	16.25"	910'	1550'
Casing Record	30"	Size	Weight
Surface String	0.375" WT	Surface	180'
Production String	18"	Bottom	910'
Production String	20050071		

All interpretations are opinions based on inferences from electrical or other measurements and we cannot and do not guarantee the accuracy or correctness of any interpretation, and we shall not, except in the case of gross or willful negligence on our part, be liable or responsible for any loss, costs, damages, or expenses incurred or sustained by anyone resulting from any interpretation made by any of our officers, agents or employees. These interpretations are also subject to our general terms and conditions set out in our current Price Schedule.

Comments

STATIC and DYNAMIC down passes were made at 50 fpm.

1 Stations were performed.

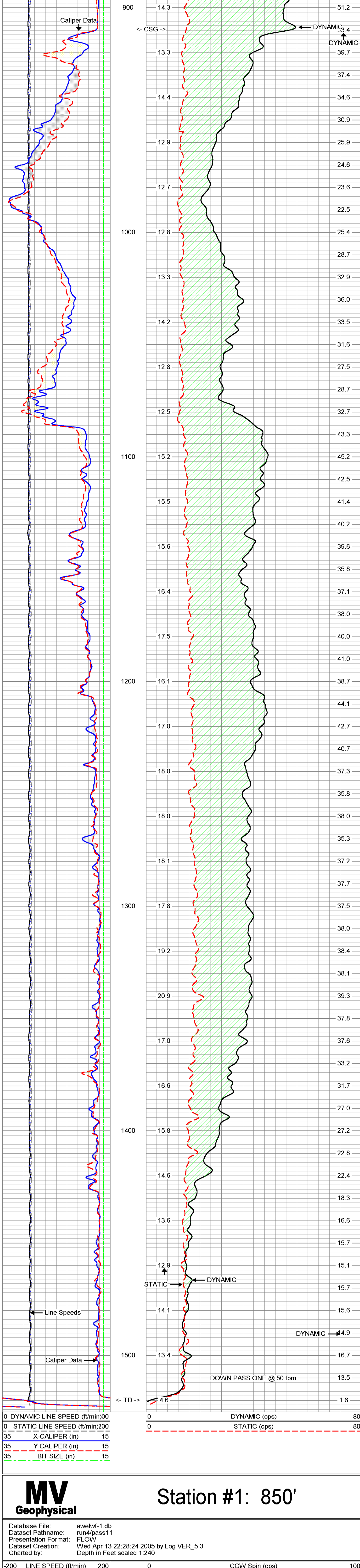
Q = 1-500 gpm

Drilling Contractor: All Webb Enterprises, Inc.

MV Geophysical S/D DOWN @ 50 fpm

Database File:	awelwf-1.db
Dataset Pathname:	run4/SD50
Presentation Format:	QLW
Dataset Creation:	Wed Apr 13 21:59:23 2005
Charted by:	Depth in Feet scaled 1:240

0 DYNAMIC LINE SPEED (ft/min)	00
0 STATIC LINE SPEED (ft/min)	200
35 X-CALIPER (in)	15
35 Y-CALIPER (in)	15
35 BIT SIZE (in)	15

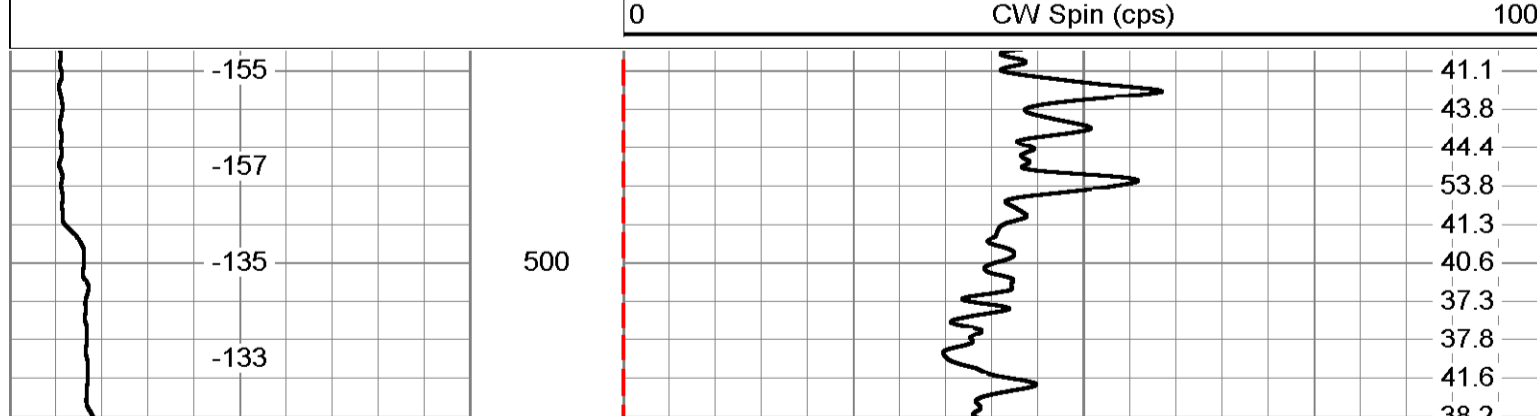


0 DYNAMIC LINE SPEED (ft/min)	00
0 STATIC LINE SPEED (ft/min)	200
35 X-CALIPER (in)	15
35 Y-CALIPER (in)	15
35 BIT SIZE (in)	15

MV Geophysical Station #1: 850'

Database File:	awelwf-1.db
Dataset Pathname:	run4/pass11
Presentation Format:	FLOW
Dataset Creation:	Wed Apr 13 22:28:24 2005 by Log VER_5.3
Charted by:	Depth in Feet scaled 1:240

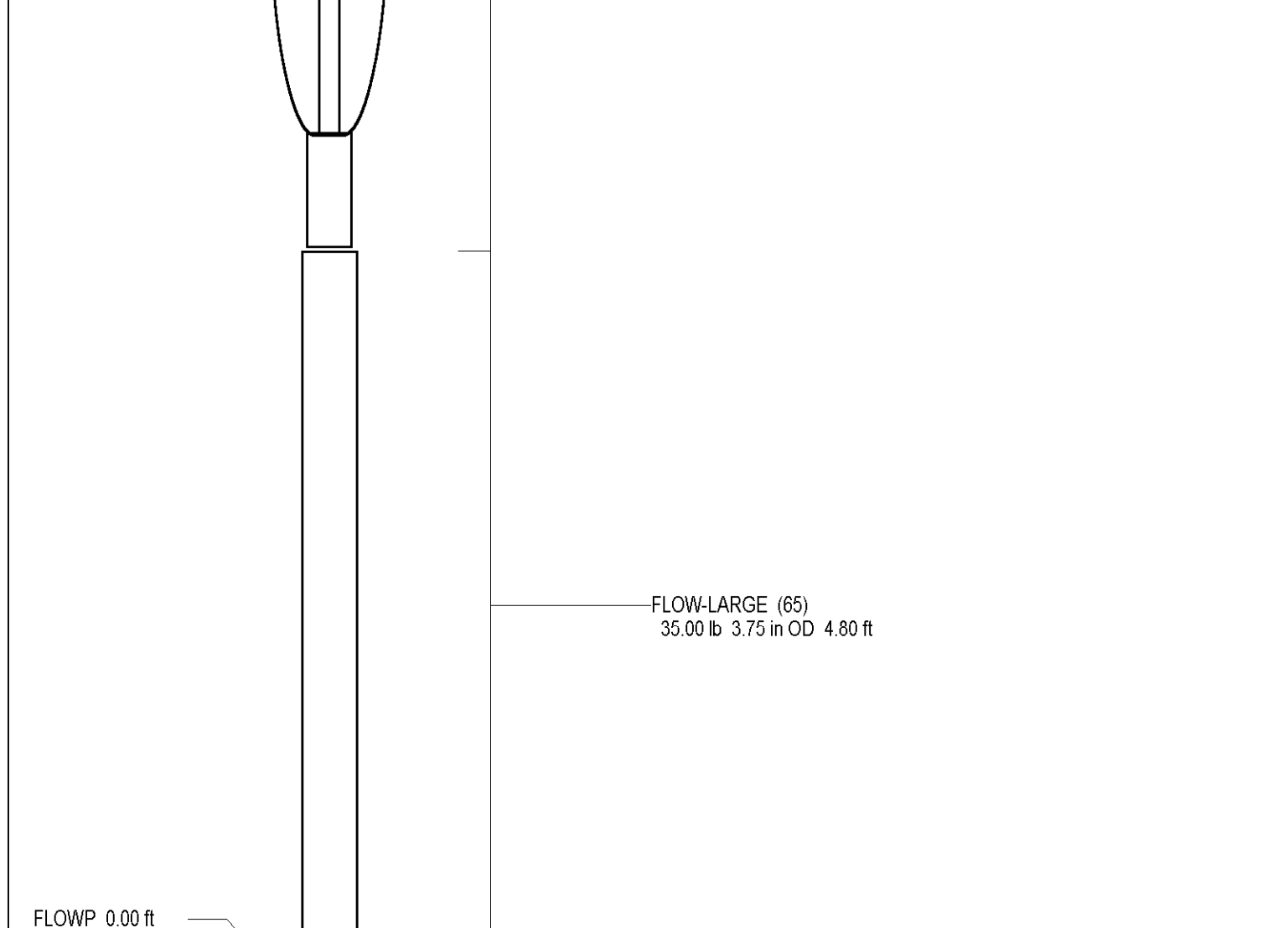
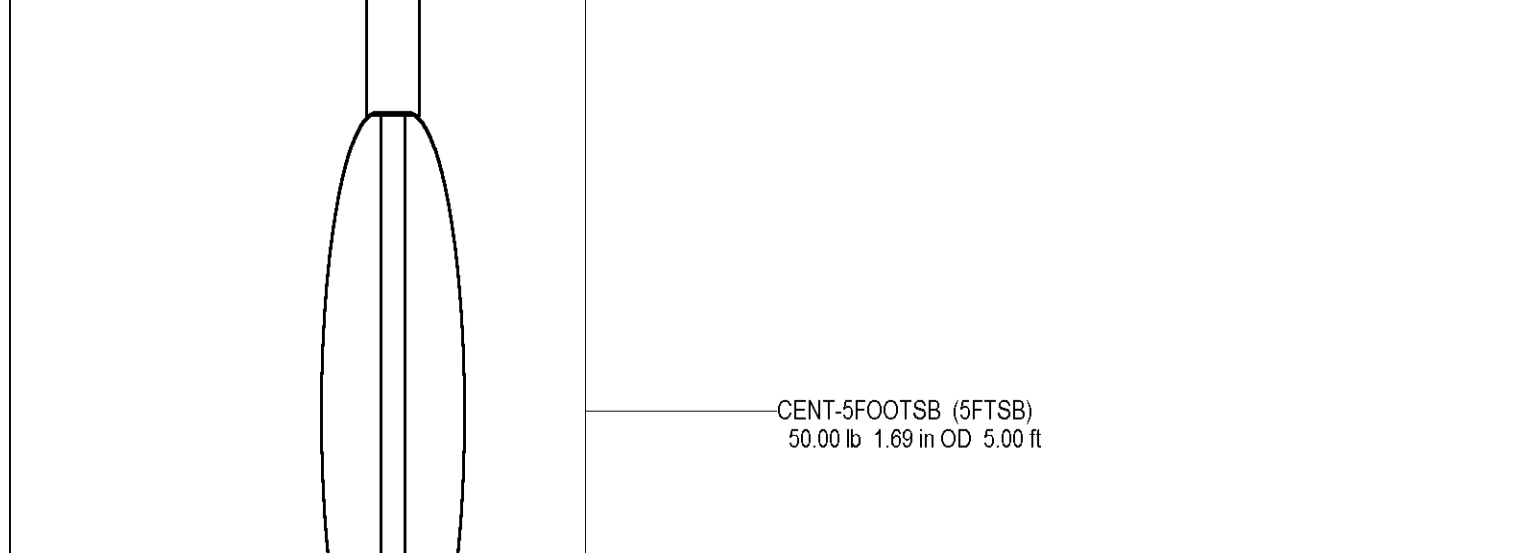
-200 LINE SPEED (ft/min)	200
0 CCW Spin (cps)	100
0 CW Spin (cps)	100



MV Geophysical Q Calibration Down

Database File:	awelwf-1.db
Dataset Pathname:	run4/pass8
Presentation Format:	FLOW
Dataset Creation:	Wed Apr 13 21:24:47 2005 by Log VER_5.3
Charted by:	Depth in Feet scaled 1:600

-200 LINE SPEED (ft/min)	200
0 CCW Spin (cps)	100
0 CW Spin (cps)	100



Dataset:	run4/pass8
Total Length:	9.80 ft
Total Weight:	85.00 lb
O.D.:	3.75 in