



# SOUTH FLORIDA WATER MANAGEMENT DISTRICT

Rev. 1/16

Site Name: <b>BICY</b>		Date of Field Work: <b>03-mar-16</b>
Party Chief: <b>Ebanks</b>	Field Book: <b>SCADA 12</b>	Page <b>17</b>
Site Benchmark: <b>NAVD88 3.015</b> <b>NGVD29 4.395</b>	Benchmark Elevation (NAVD88) <b>3.015</b>	Corpscon 6.0.1 Conversion Factor (NAVD88 to NGVD29) <b>+1.385</b>
Reference Elevation(s) (NAVD88): <b>5.205 GW1</b> <b>7.205 GW2</b> <b>7.315 GW3</b> <b>7.20 GW4</b>	Existing Tag Elevation (Datum): <b>None – Site recently rebuilt</b>	
Calibration Elevation(s) (NAVD88): <b>The ports are at a 90° to the ground. None taken</b>		
Ground Elevation (NAVD88): <b>2.555 NE corner</b> <b>2.605 SE corner</b> <b>2.585 SW corner</b> <b>2.585 NW corner</b>	Pad Elevation (NAVD88): <b>3.005 NE corner</b> <b>2.995 SE corner</b> <b>2.995 SW corner</b> <b>2.995 NW corner</b>	
Latitude: <b>25° 53' 37.64"</b>	Longitude: <b>81° 18' 33.72"</b>	

Notes: **Benchmark DONA has been RESET**  
**NAVD88** – North American Vertical Datum of 1988  
**NGVD29**- National Geodetic Vertical Datum of 1929  
**Corpscon 6.0.1** – A MS-Windows-based program to convert coordinates and elevations between datum's

### PICTURES

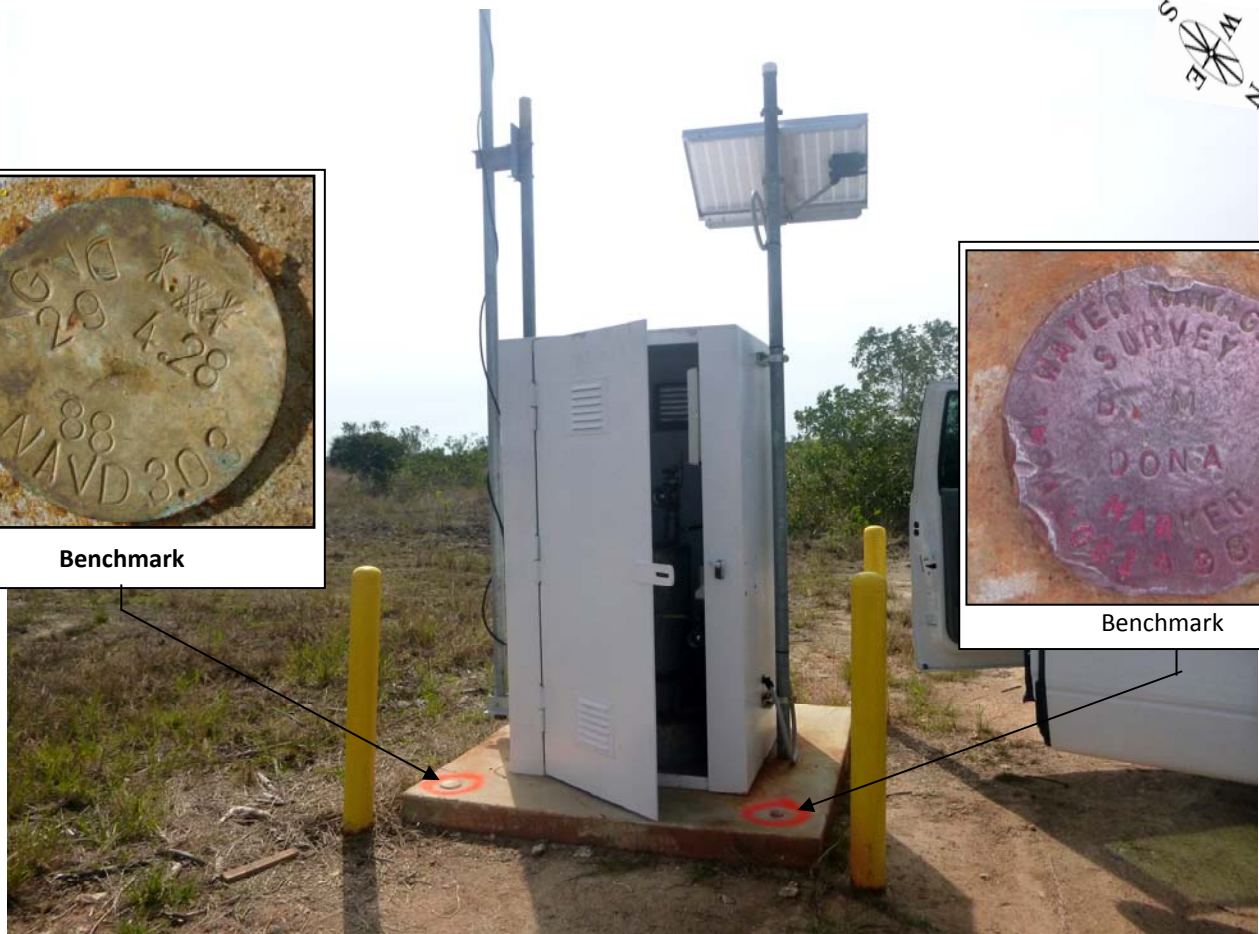
Overall Site



Benchmark



Benchmark



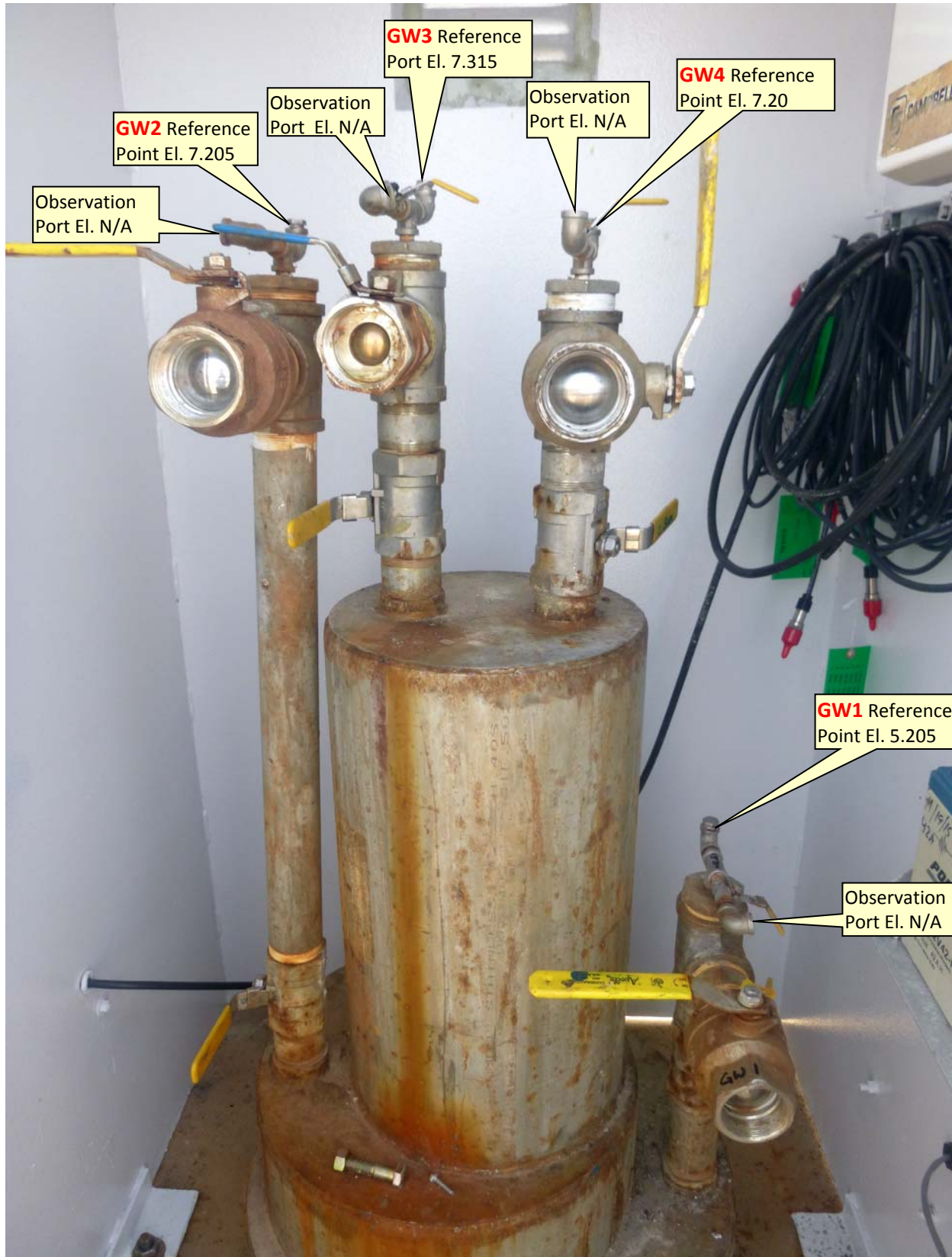
Looking Southwesterly



# SOUTH FLORIDA WATER MANAGEMENT DISTRICT

Rev. 1/16

Overall Site



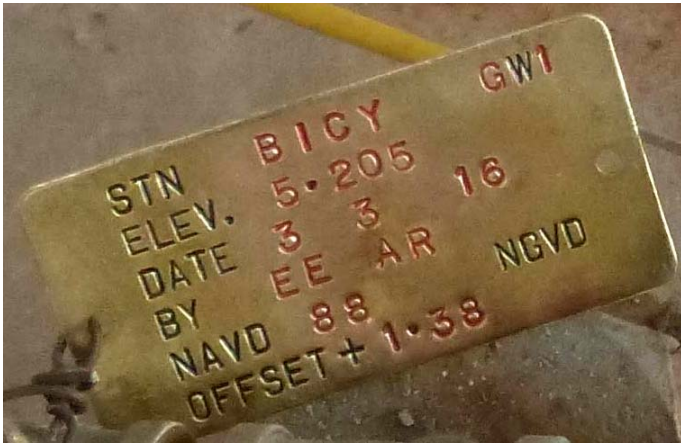
Looking Southwesterly



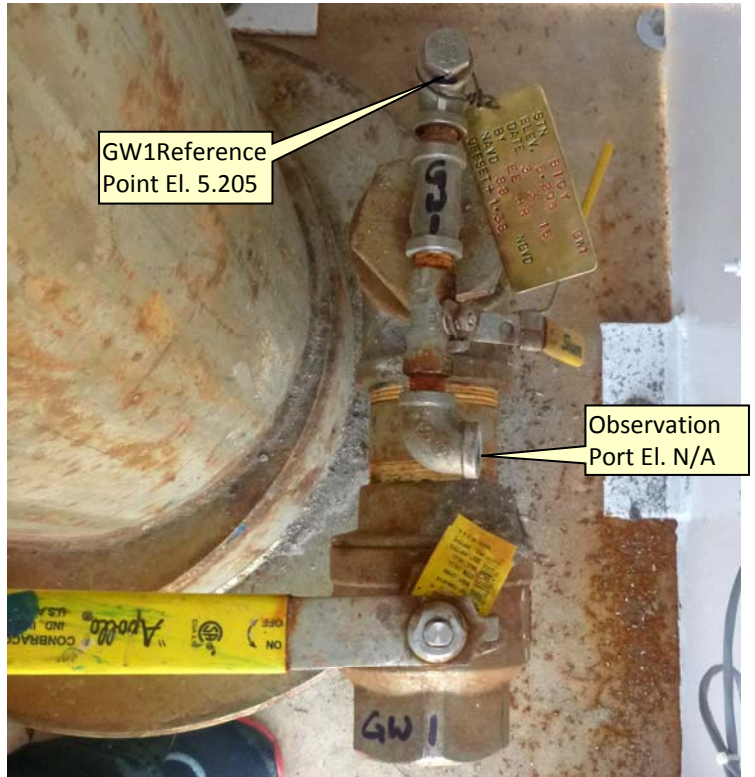
# SOUTH FLORIDA WATER MANAGEMENT DISTRICT

Rev. 1/16

GW1 Brass Tag



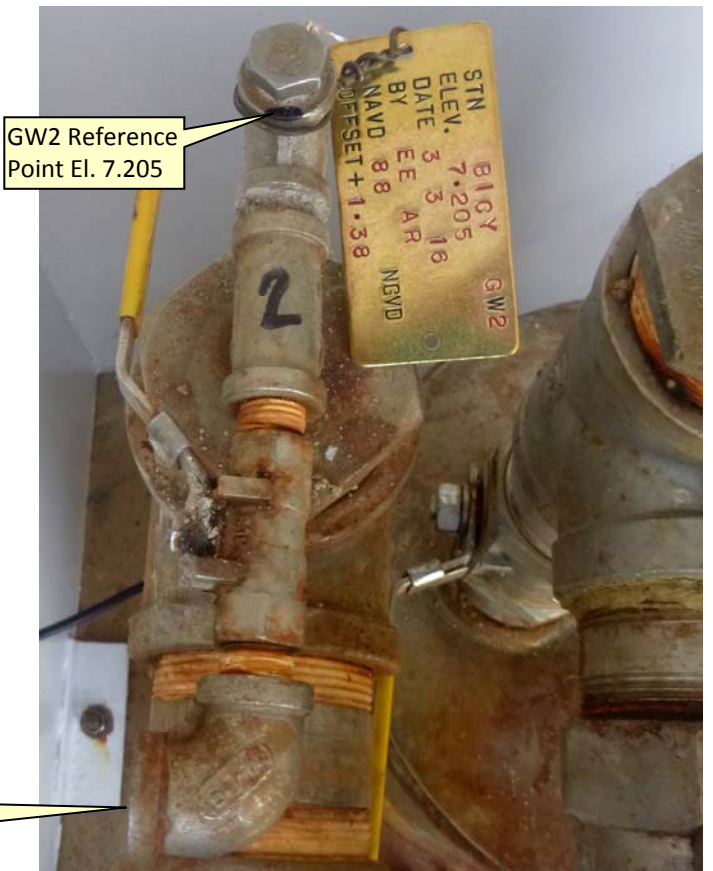
GW1 Brass tag and Reference Mark



GW2 Brass Tag



GW2 Brass tag and Reference Mark



Observation Port El. N/A



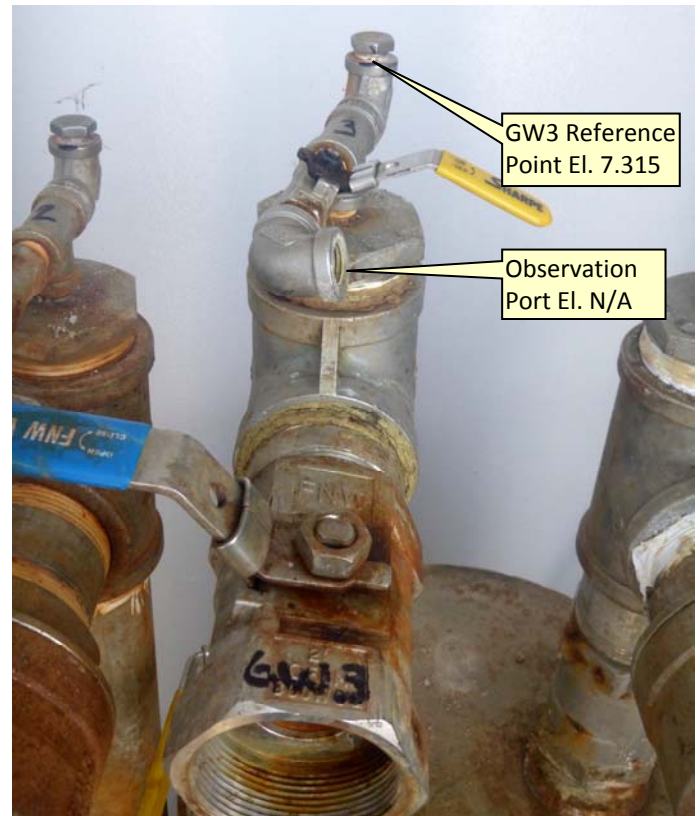
# SOUTH FLORIDA WATER MANAGEMENT DISTRICT

Rev. 1/16

GW3 Brass Tag



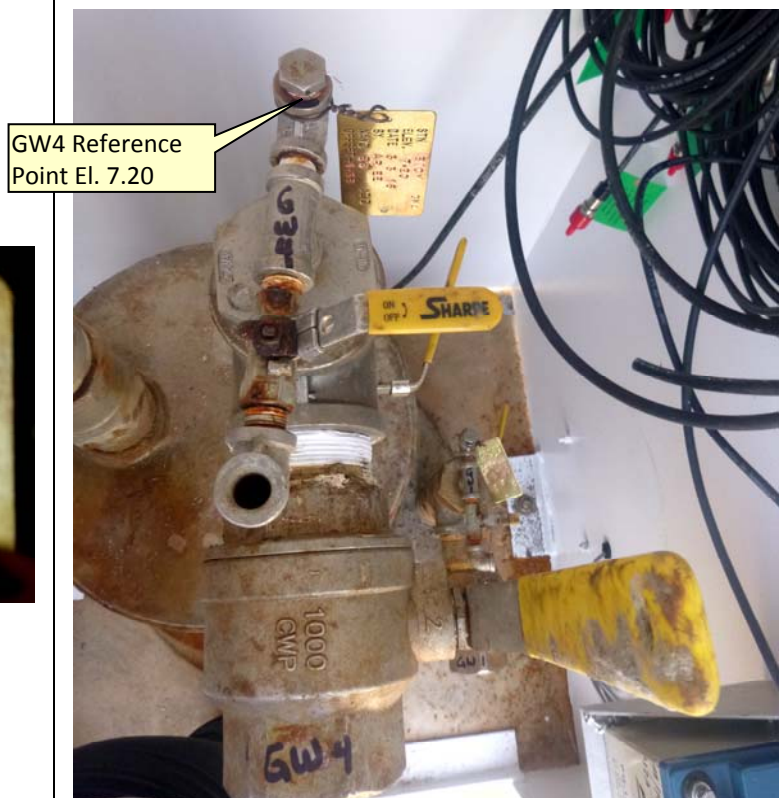
GW3 Reference Mark



GW4 Brass Tag



GW4 Brass tag and Reference Mark



17 KEVIN BCADA FB#12 3/3/16

hel. 34 TWP 62 Rge 30 Fbanks. Rodriguez

Establish Ref Point Elevation for Florida Walls @ BICY

HTA	+	H.I.	-	Elev	Remarks
BM- NAVD 88 3.015 NAVD 29 4.395	4.49	7.505		3.015	END @ NE Corner of PAD.
BM DONA. 1998			4.487	3.018	(2.99) NAVD 88
SENSOR #1		2.30		5.205	
SENSOR #2		0.30		7.205	
SENSOR #3		0.19		7.315	
SENSOR #4		0.305		7.20	
PAD Corners					
NE		4.50		3.005	} 5.0'
NE		4.51		2.995	
SW		4.51		2.995	
NW		4.51		2.995	
GROUND ELEV.					
NE		4.95		2.555	} 2.6'
NE		4.90		2.605	
SW		4.92		2.585	
NW		4.92		2.585	
BM NAVD 88 3.15 NAVD 29 4.395			4.49	3.015	✓



# SOUTH FLORIDA WATER MANAGEMENT DISTRICT

Rev. 1/16

DESIGNATION: <b>BICY</b>		PROJECT: <b>BICY Well</b>	
ESTABLISHED BY: <b>COMPASS POINT</b>		SURVEYOR: <b>Ebanks</b>	
RECOVERED BY: <b>SOUTH FLORIDA WATER MANAGEMENT DISRICT</b>		DATE: <b>03-maf-16</b>	
<b>GEOGRAPHIC POSITION</b>			
SECTION <b>34</b>		TOWNSHIP <b>52 SOUTH</b>	RANGE <b>40 EAST</b>
COUNTY <b>Collier</b>		NAME OF QUADRANGLE: <b>Ochopee</b> GEOGRAPHIC INDEX OF QUAD: <b>1611</b>	
HORIZONTAL DATUM: 1927 (1983) Other _____ (circle one) ZONE E or W			
VERTICAL DATUM: MSL 1929 (1988) Other _____ (circle one)			
VERTICAL ACCURACY: 1 2 (3)			
STATE PLANE COORDINATE	X	Y	NAVD 88 EL. <b>3.03</b> NGVD 29 EL. <b>4.41</b>
CORPSCON 6.0.1 CONVERSION FACTOR (NAVD88 TO NGVD29): <b>+1.385</b>			
LATITUDE: <b>25° 53' 37.6"</b>		LONGITUDE: <b>81° 18' 33.8"</b>	
<b>RECOVERY DATA</b>			
Stamping: <b>NGVD 29 4.28 NAVD88 3.03</b>			
To Reach: From the intersection of State Road 29 (S.R. 29) and United States Highway 41 (U.S. 41, Tamiami Trail), go East on U.S. 41 approximately 3.5 miles to Dona Drive (BCNP Wildlife Check Station sign); turn right (South) on Dona Drive, then take an immediate left turn; go past check station (small building), follow trail/path to the East and then South for approximately one-half mile off paved road. Wellhead shelter is visible on the right and station location. Station is located on the Northeast corner of the well pad.			
NOTABLE LAND MARKS: <b>BICY WELL SITE</b>			
NGS SOURCE BENCHMARK: <b>D249 (AC0601)</b>			
FIELD BOOK <b>SCADA 12</b> PAGE <b>17</b>			
<b>PICTURES</b>			
<b>Benchmark</b>			
<b>Looking Southwesterly</b>			



# SOUTH FLORIDA WATER MANAGEMENT DISTRICT

Rev. 1/16

Looking Southwesterly

Field Book

17 KEVIN BLADA FB#12 3/3/16  
 hel.34 TWP 62 Rge 30 Flanks. Rodriguez

Establish Ref Point Elevation for Florida  
 Walls @ BICY

STA	+	H.I.	-	Elev	Remarks
BM- NAVD 88 3.015 NAVD 29 4.395	4.49	7.505		3.015	End @ NE Corner of PAD.
BM. DONA. 1998			4.487	3.018	(2.99) NAVD 88
SENSOR #1			2.30	5.205	
SENSOR #2			0.30	7.205	
SENSOR #3			0.19	7.315	
SENSOR #4			0.305	7.20	
PAD Corners					
NE			4.50	3.005	} 5.0'
NE			4.51	2.995	
SW			4.51	2.995	
NW			4.51	2.995	
GROUND ELEV.					
NE			4.95	2.555	} 2.6'
NE			4.90	2.605	
SW			4.92	2.585	
NW			4.92	2.585	
BM NAVD 88 3.15 NAVD 29 4.395			4.49	3.015	✓