



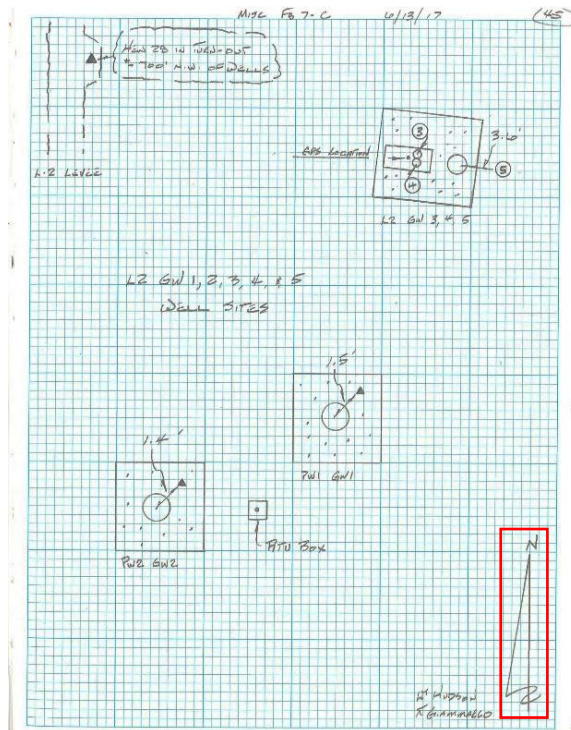
SOUTH FLORIDA WATER MANAGEMENT DISTRICT

Rev. 1/16

| | | | | | |
|---|---|--|--|---|--|
| DB Hydro Station Names: | | DB Hydro Site Name: | | Last Date of Field Work: 7/24/19 | |
| L2-PW1 HE-907 (L2 GW3) HE-909 (L2GW5) | L2-PW2 HE-908 (L2GW4) | L2GW | | | |
| Party Chief: Ebanks | | Field Book: SCADA | | Page(s) 36-37 | |
| Site Benchmark(s): PW1 | | Benchmark Elevation (NAVD88) 17.03 ft | | Corpscon 6.0.1 Conversion Factor (NAVD88 to NGVD29) +1.38 | |
| Reference Elevations (NAVD88) at: | | Existing Tag Elevations (NGVD29) Datum) at: | | Calibration Port Elevations (NAVD88) at: | |
| 21.63ft L2-PW-1 18.50ft HE-907 (L2GW3) 20.47ft HE-909 (L2GW5) | 20.49ft L2-PW-2 18.54ft HE-908 (L2GW4) | N/A L2-PW-1 19.95' HE-907 (L2GW3) 21.97' HE-909 (L2GW5) | N/A L2-PW-2 19.985 HE-908 (L2GW4) | 21.64ft L2-PW1 N/A HE-907 (L2GW3) N/A HE-909 (L2GW5) | 20.49ft L2-PW2 N/A HE-908 (L2GW4) |
| Ground Elevation (NAVD88) at: | | | Pad Elevation (NAVD88): | | |
| L2-PW1 16.3 NW Corner 16.2 NE Corner 16.3 SE Corner 16.2 SW Corner | | L2-PW2 16.0 NW corner 16.3 NE Corner 16.2 SE Corner 16.1 SW Corner | | L2-PW1 17.01 NW Corner 17.01 NE Corner 17.01 SE Corner 17.01 SW Corner | |
| L2-PW2 16.36 NW Corner 16.34 NE Corner 16.35 SE Corner 16.36 SW Corner | | | | | |
| HE-907 (L2 GW3), HE-908 (L2GW4), HE-909 (L2GW5) 16.3 NW Corner 16.2 NE Corner 15.9 SE Corner 16.3 SW Corner <i>(Note: all ground elevations are the same)</i> | | | HE-907 (L2 GW3), HE-908 (L2GW4), HE-909 (L2GW5) 16.22 NW Corner 16.29 NE Corner 16.25 SE Corner 16.19 SW Corner | | |
| Latitude: L2-PW-1 26°36'28.86" L2-PW-2 26°36'28.7 HE-907 (L2 GW3), HE-908 (L2GW4) & HE-909 (L2GW5) 26°36'29.4" | | | Longitude: L2-PW-1 80°56'57.72 " L2-PW-2 80°56'57.95" HE-907 (L2 GW3), HE-908 (L2GW4)) & HE-909 (L2GW5) 80°56'57.5" | | |
| Notes: N/A – Not applicable NAVD88 – North American Vertical Datum of 1988 NGVD29 - National Geodetic Vertical Datum of 1929 Corpscon 6.0.1 - A U.S. Army Corps of Engineers Engineering Research and Development Center Topographic Engineering Center Alexandria, Virginia Windows-based program to convert coordinates and elevations between datum's using vertcon05.txt and vertcon05.05 files supplied by the U.S. Army Corps of Engineers South Atlantic Division, Jacksonville FL. | | | | | |

PICTURES

Overall Site



Field Book MISC 7C page 45 (Not to scale) (13-jun-17)



SOUTH FLORIDA WATER MANAGEMENT DISTRICT

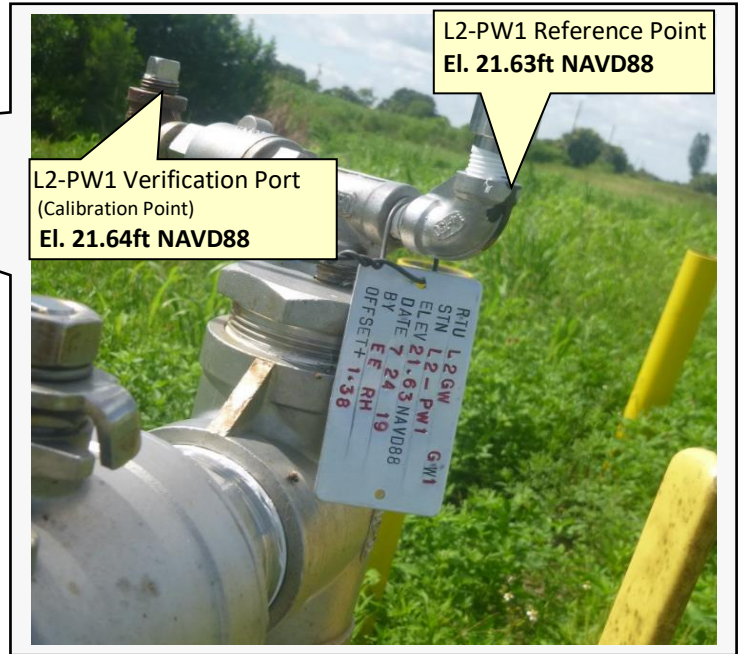
Rev. 1/16

L2-PW1 Well



PW1 Brass Disk
Latitude: 26°36'-28.86"
Longitude: 80°56'-57.72"
El. 17.03ft NAVD88

Looking Easterly (Not to scale) (13-jun-17)



L2-PW1 Verification Port
(Calibration Point)
El. 21.64ft NAVD88

L2-PW1 Reference Point
El. 21.63ft NAVD88

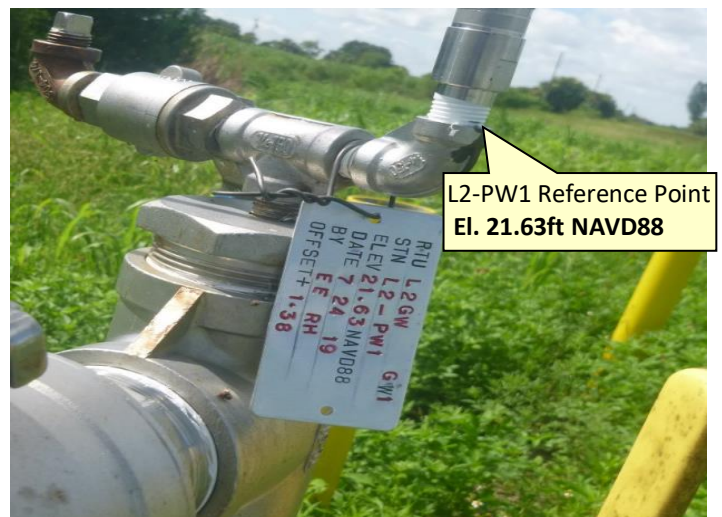
RTU L2GW GW1
STN L2-PW1
ELEV 21.63 NAVD88
DATE 7 24 19
BY EE RH
OFFSET +1.38

Brass Tag Close-up



RTU L2GW GW1
STN L2-PW1
ELEV 21.63 NAVD88
DATE 7 24 19
BY EE RH
OFFSET +1.38

Brass Tag and Reference Point Close-up



L2-PW1 Reference Point
El. 21.63ft NAVD88

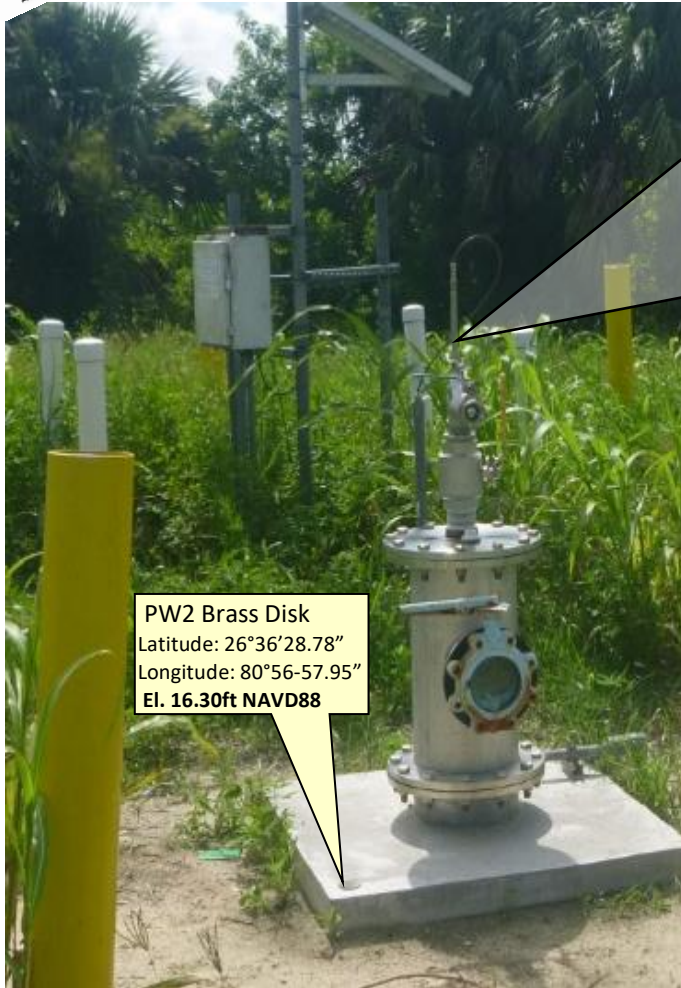
RTU L2GW GW1
STN L2-PW1
ELEV 21.63 NAVD88
DATE 7 24 19
BY EE RH
OFFSET +1.38



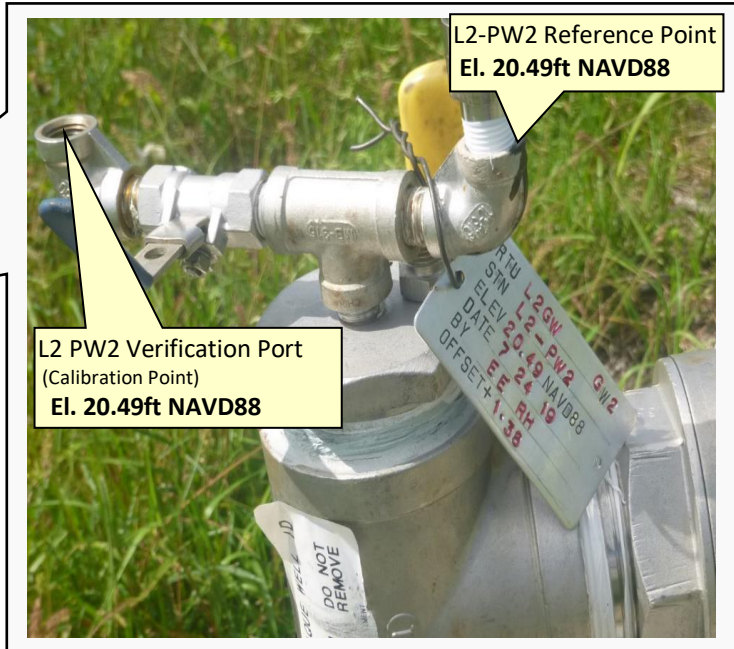
SOUTH FLORIDA WATER MANAGEMENT DISTRICT

Rev. 1/16

L2-PW2 Well



PW2 Brass Disk
Latitude: 26°36'28.78"
Longitude: 80°56-57.95"
El. 16.30ft NAVD88



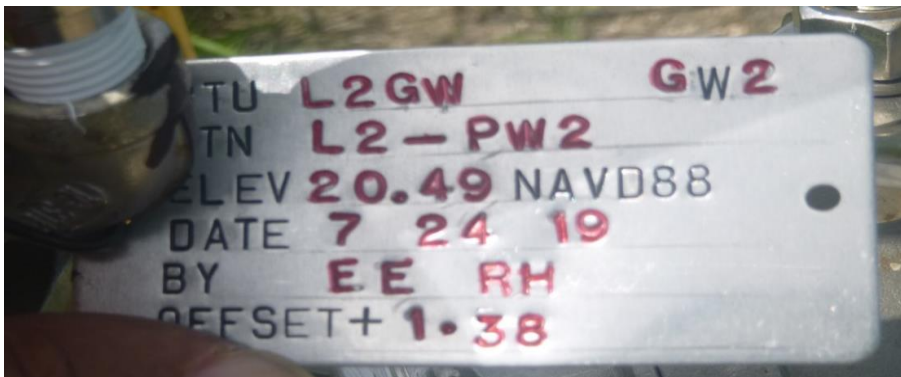
L2-PW2 Reference Point
El. 20.49ft NAVD88

L2 PW2 Verification Port
(Calibration Point)
El. 20.49ft NAVD88

RTU L2GW GW2
STN L2-PW2
ELEV 20.49 NAVD88
DATE 7 24 19
BY EE RH
OFFSET +1.38

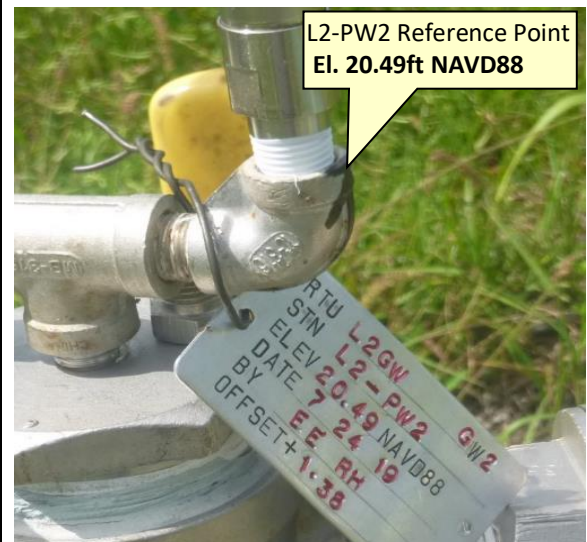
Looking Southerly (Not to scale) (13-jun-17)

Brass Tag Close-up



RTU L2GW GW2
STN L2-PW2
ELEV 20.49 NAVD88
DATE 7 24 19
BY EE RH
OFFSET +1.38

Brass Tag and Reference Point Close-up



L2-PW2 Reference Point
El. 20.49ft NAVD88

RTU L2GW GW2
STN L2-PW2
ELEV 20.49 NAVD88
DATE 7 24 19
BY EE RH
OFFSET +1.38



SOUTH FLORIDA WATER MANAGEMENT DISTRICT

Rev. 1/16

HE-907 (L2-GW3), HE-908 (L2-GW4) and HE-909 (L2-GW5) Well Site



Looking Northeasterly (Not to scale) (13-jun-17)

HE-907 (L2-GW3) & HE-908 (L2-GW4)



Looking Northeasterly (Not to scale) (13-jun-17)



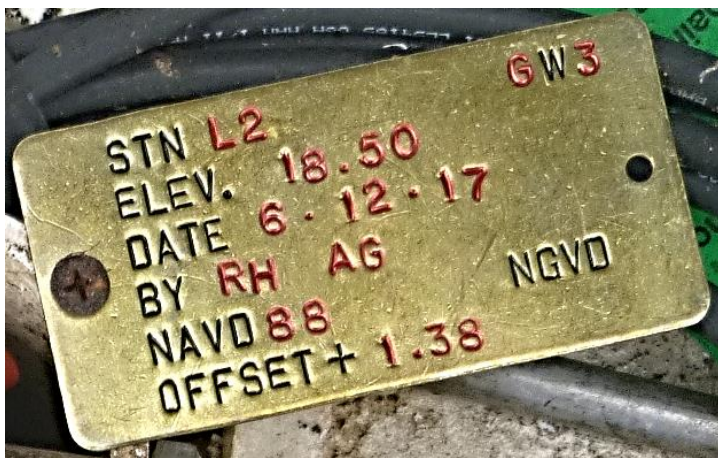
SOUTH FLORIDA WATER MANAGEMENT DISTRICT

Rev. 1/16

HE-907 (L2-GW3) & HE-908 (L2-GW4)



HE-907 (L2-GW3) Brass Tag) NGVD29



HE-908 (L2-GW4) Brass Tag) NGVD29

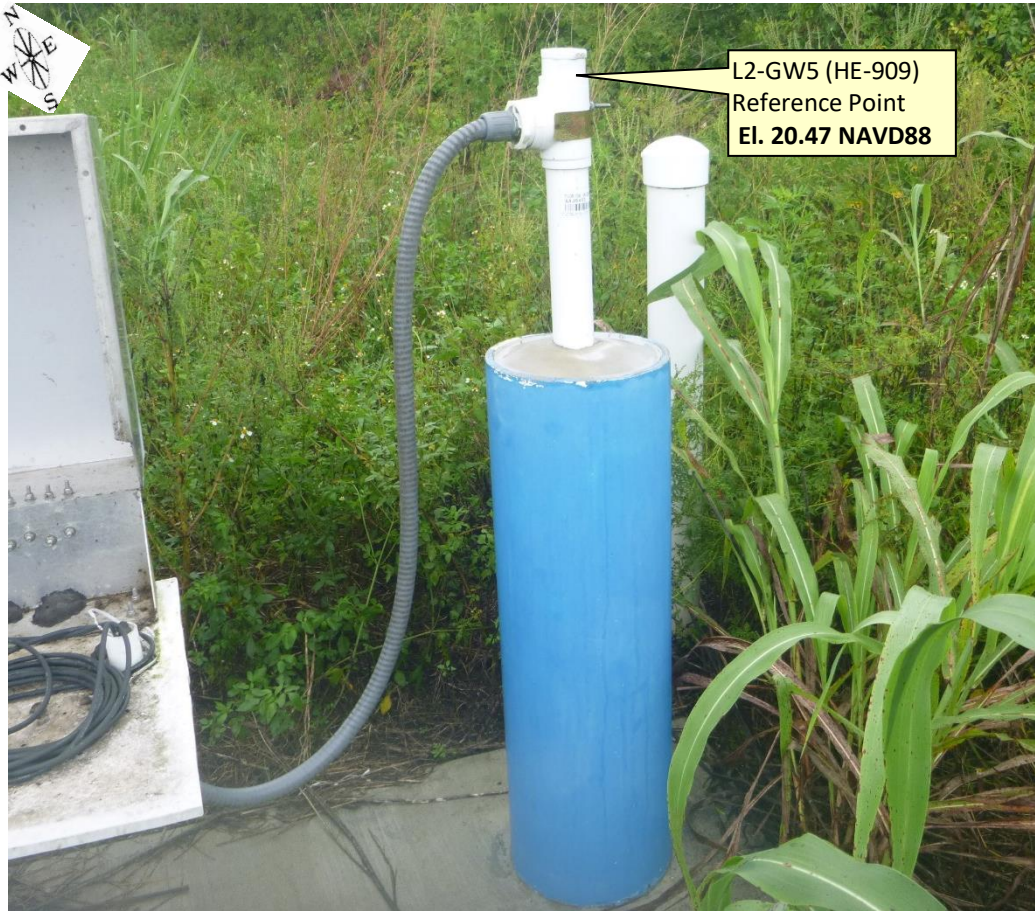




SOUTH FLORIDA WATER MANAGEMENT DISTRICT

Rev. 1/16

HE-909 (L2-GW5)



Looking Northeasterly (Not to scale) (13-jun-17)

HE-909 (L2-GW5) Brass Tag Close-up



Brass Tag and Reference Point Close-up

