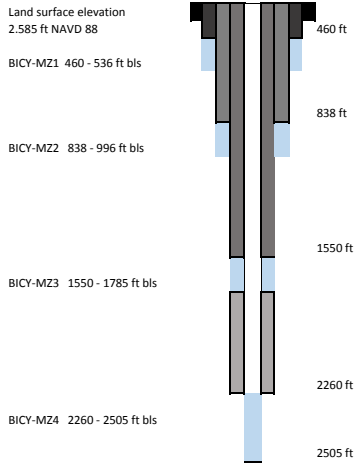


Site Name **BICY**  
 Station Names BICY-MZ1, BICY-MZ2, BICY-MZ3 and BICY-MZ4  
 Aquifers IAS, UFA, MCU, LFA  
 FDEP Identifier Unknown  
 Date of this summ 7/11/2017

Lat / Long: 255337.612, 811833.75  
 County: Collier  
 Wellhead Repair Date: 2009, June 2015



Construction diagram is not to scale



Date of Photo - 2015

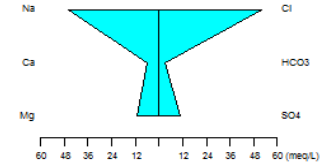
Survey data: 3/3/2016  
 Reference elevati5.205 (BICY-MZ1), 7.205 (BICY-MZ2), 7.315 (BICY-MZ3), 7.20 (BICY-MZ4) in ft NAVD88  
 conversion to NGVD 29 add 1.38 ft  
 Data Adjustments BICY-MZ4 water level correction 10/18/2016 see DBhydro multimedia  
 Access Agreement National Park Service - Big Cypress 12/4/2014, Co-op agreement  
 References SFWMD Survey 3/3/2016  
 Bennett, Michael, 2004.  
 Hydrogeologic Investigation of the Floridan Aquifer System  
 Big Cypress Preserve, Collier County, Florida  
 SFWMD Technical Publication WS-18

<b>BICY-MZ1</b>	
Casing Material:	Steel
Diameter:	24-inch
Data Range:	2007 - 2015
Sampling Events Analyzed:	5
Water Type:	Na-Cl

<b>Field Parameter Averages BICY-MZ1</b>	
Field pH:	7.84
Specific Conductance (uS/cm)	6754
Temperature (Celcius)	26.86
TDS (mg/L)	4018
Water Level (ft NGVD 29)	38.63

<b>BICY-MZ1 Ionic Ranges</b>		
Parameter	Min (mg/L)	Max (mg/L)
Potassium (K)	41	44
Sodium (Na)	1025	1120
Calcium (Ca)	104	117
Magnesium (Mg)	134	142
Chloride (Cl)	1685	1853
Bicarbonate (HCO3)	176	190
Sulfate (SO4)	483	525

BICY-MZ1, 11/23/2015

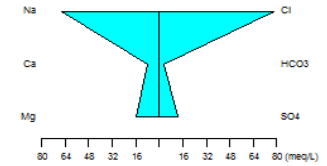


<b>BICY-MZ2</b>	
Casing Material:	Steel
Diameter:	18-inch
Data Range:	2004 - 2015
Sampling Events Analyzed:	17
Water Type:	Na-Cl

<b>Field Parameter Averages BICY-MZ2</b>	
Field pH:	7.67
Specific Conductance (uS/cm)	9250
Temperature (Celcius)	27.82
TDS (mg/L)	5421
Water Level (ft NGVD 29)	38.47

<b>BICY-MZ2 Ionic Ranges</b>		
Parameter	Min (mg/L)	Max (mg/L)
Potassium (K)	43	68
Sodium (Na)	110	1680
Calcium (Ca)	56	162
Magnesium (Mg)	130	210
Chloride (Cl)	1700	3000
Bicarbonate (HCO3)	56	195
Sulfate (SO4)	423	720

BICY-MZ2, 11/23/2015

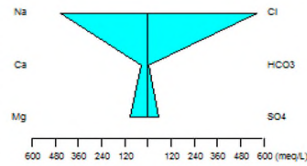


<b>BICY-MZ4</b>	
Casing Material:	Fiberglass
Diameter:	2-inch
Data Range:	2004 - 2015
Sampling Events Analyzed:	16
Water Type:	Na-Cl

<b>Field Parameter Averages BICY-MZ4</b>	
Field pH:	6.96
Specific Conductance (uS/cm)	51937
Temperature (Celcius)	27.48
TDS (mg/L)	35479
Water Level (ft NGVD 29)	10.26

<b>BICY-MZ4 Ionic Ranges</b>		
Parameter	Min (mg/L)	Max (mg/L)
Potassium (K)	310	540
Sodium (Na)	830	11830
Calcium (Ca)	610	830
Magnesium (Mg)	890	1235
Chloride (Cl)	16000	21000
Bicarbonate (HCO3)	139	238
Sulfate (SO4)	1500	4500

BICY-MZ4, 11/23/2015



<b>BICY-MZ3</b>	
Casing Material:	Steel
Diameter:	12-inch
Data Range:	2004 - 2015
Sampling Events Analyzed:	13
Water Type:	Na-Cl

<b>Field Parameter Averages BICY-MZ3</b>	
Field pH:	7.54
Specific Conductance (uS/cm)	43606
Temperature (Celcius)	27.65
TDS (mg/L)	28021
Water Level (ft NGVD 29)	20.77

<b>BICY-MZ3 Ionic Ranges</b>		
Parameter	Min (mg/L)	Max (mg/L)
Potassium (K)	238	470
Sodium (Na)	7968	11000
Calcium (Ca)	488	800
Magnesium (Mg)	817	1200
Chloride (Cl)	14515	20000
Bicarbonate (HCO3)	39	207
Sulfate (SO4)	1196	2600

BICY-MZ3, 11/24/2015

