

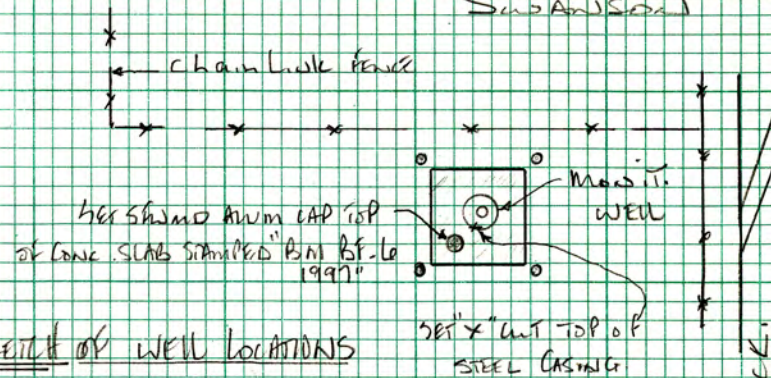
WEL 2 TWT 49.3 LRE 42E.

Service Area to Establish Elevation for
 Benchmarks SET (LIMIT OF DEERFIELD BEACH PUBLIC
 WORKS COMPLEX @ Goodwin Blvd)

Ref: 1) Ground Hydrogeology DEERFIELD DIST DIS 8/26/96
 2) Inst. GE. J. LUKASIEWICZ & L. BAARS (SRVMS)

WEL	T	H.I.	—	ELEV	Bm Elev
Bm.	3.93 9.72	19.38		15.45	[15.446]
TR.			5.40 8.25	13.98	
TR.	3.56 10.09	17.54			
TR.			3.83 9.82	13.71	
TR.	4.62 9.03	18.33			
TR.			4.63 9.02	13.70	
TR.	4.39 9.26	18.09			
TR.			3.86 9.79	14.23	
Bm.	4.02 9.63	18.25			
			4.15 9.50	14.10	

FRANKS T
 SUPERVISOR



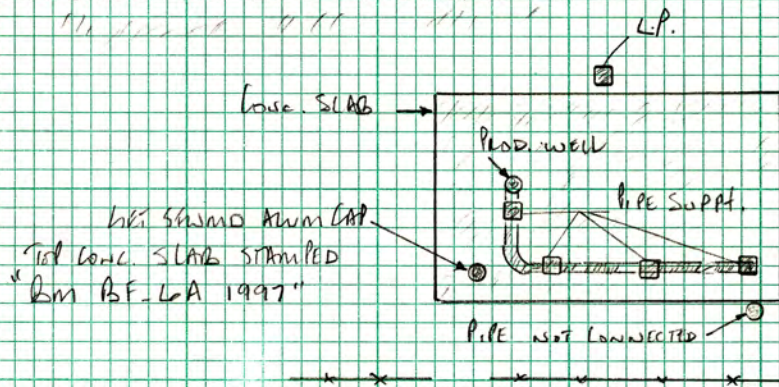
SKETCH OF WELL LOCATIONS

Comments

END BROWARD CO. TWT DISK 1962
 AT WIX... HILLSBORO BLVD / GOODWIN BLVD
 STAMPED "BROWARD CO. DIST BC 49"
 (DESCRIPTION SHEET PROVIDED)

BC 349

LIMIT OF DEERFIELD BEACH
 PUBLIC WORKS COMPLEX



HERSHMAN ALUM CAP TOP OF CONC. SLAB AT MONIT. WELL (SEE SKETCH)
 STAMPED "BM BF-6 1997"

4/29/97
 5:25 PM

COND. FR. PG. 16

SP		H.L.		Feet	Bm. Feet
		18.25			
"X" cut				3.24	15.01
				10.41	
	2.35	17.30			
	11.30				
Bm.				4.12	13.24
				9.53	
Bm.	4.26	17.50		13.24	
	9.39				
"X" cut				2.49	15.01
				11.16	
	3.23	18.24			
	10.42				
Bm.				4.14	14.10
				9.51	
IP.				4.11	14.13
				9.54	
	4.02	18.15			
	9.63				
IP.				4.53	13.62
				9.12	

lx

Comments.

Get "X" mark on rim (top) of steel casing (see sketch pg. 16)

Bm is shown above cap set esp of conc. slab at prod. well stamped "Bm BF-6A 1997"

"BF-6A" (above)

on steel casing (above)

"Bm BF-6 1997" (see pg. 16)

BB
5/28/97

Cont'd fr. Pg. 17

HTA	+	W.I.	-	Elev	ben Elev
	4.75	18.37		13.62	
	8.90				
AP				4.65	13.72
				8.90	
				9.00	
	3.93	17.65			
	9.72				
AP				3.68	13.97
				9.97	
	5.44	19.41			
	8.21				
BM				3.97	15.44 [15.45]
				9.68	Elev = 20.01

Comments

ben in Broward Co. ENG DEPT DIST "B049"
(like Pg. 16)

SOUTH FLORIDA WATER MANAGEMENT DISTRICT



Survey Data Entry and Retrieval Application (SDERA) Print Output

Control Point Search Results

Derived Data - Denoted By:

**

Designation	BF6	Record State	ACCEPTED
NGS PID			
Project Name	BF06 WELL SITE	Date Entered/Updated	06/27/2009
Updated By	ATLAS DATA LOAD	Status	
Party Chief	EBANKS, ELVIE	Type	V
Monument Set By	SOUTH FLORIDA WATER MANAGEMENT DISTRICT	Date Established	01/01/1997
County	BROWARD	Section	2
Township	48	Range	42
Quadrangle	WEST DIXIE BEND	Offset (29 to 88)	
NGS Source BM		CCR Link	
Ctrl Pt Source(s)			

<u>Horizontal</u>	<u>NAD 1927</u>	<u>NAD 1983</u>	<u>Vertical</u>	<u>NGVD 1929</u>	<u>NAVD 1988</u>
Latitude		26 18 52.0	Class		
Longitude		80 07 26.2	Order	3	
Northing(Y)			Elevation	14.1	
Easting(X)			Measurement Unit	Feet	
Class					
Order					
NAD83 Adj Year					

Field Book

BROWARD CO WELLS 11

Field Book Pages

16

Stamping

BF-06 1997

How to Reach

Description

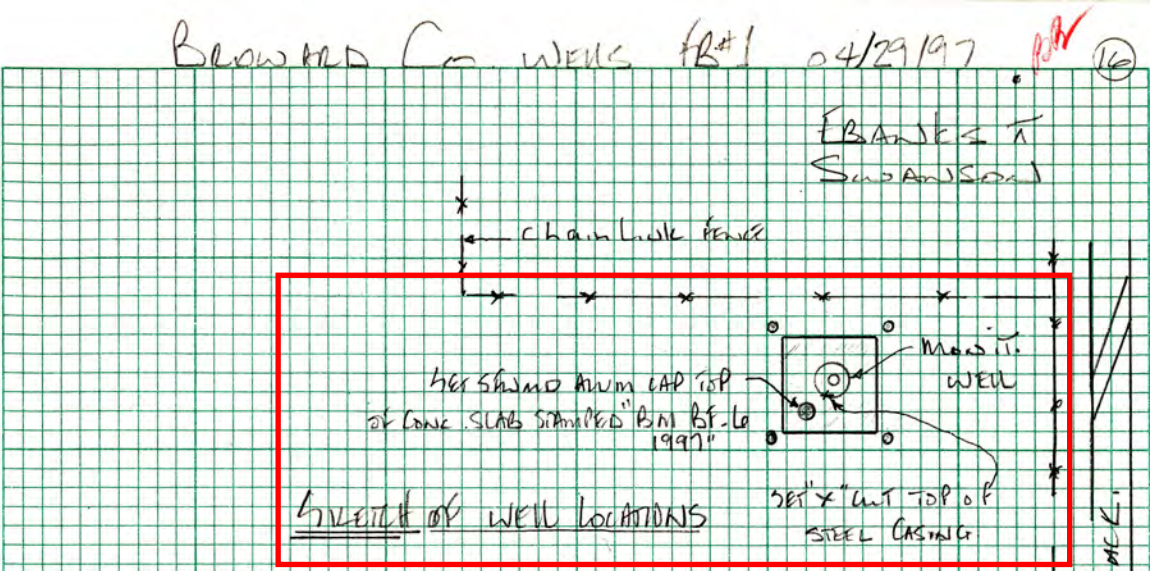
BM IS SFWMD ALUMINUM CAP SET ON TOP OF CONCRETE SLAB FOR MONITORING WELL BF-6, LOCATED AT THE DEERFIELD BEACH PUBLIC WORKS COMPLEX AT GOOLSBY BOULEVARD. ENTRANCE IS THROUGH MOST SOUTHERLY GATE. WELL & BM ARE AT REAR OF PROPERTY AT NORTH END.

Source Benchmark: Broward County B349

DISCLAIMER:

The South Florida Water Management District (hereinafter referred to as the DISTRICT) shall not be held liable for improper or incorrect use of the data, information, apparatus, products,

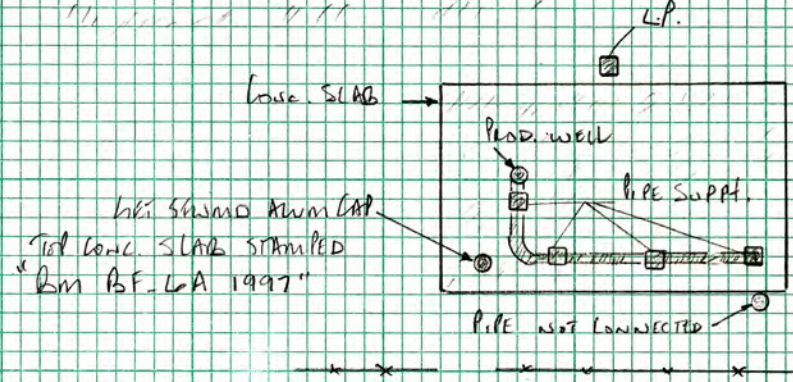
processes or materials described and/or contained herein. These data, information, apparatus, products, processes, materials and related graphics are not legal documents and are not intended to be used as such. The user hereby recognizes that the information, data, apparatus, products, processes and materials are dynamic and may change over time without notice. However, the DISTRICT makes no commitment to update the information, data, apparatus, products, processes or materials contained herein.



Comments

END BROWARD Co. FIRE DISK 1968
AT INTX... HILLSBORO BLVD/GOODSBY BLVD
STAMPED "BROWARD Co. DPT 0049"
(DESCRIPTION SHEET PROVIDED)

City of Deerfield Beach
Public Works Complex



HER SHAWM Alum CAP TOP of CONC. SLAB AT MONIT. WELL (SEE SKETCH)
STAMPED "BM BF-6 1997"

PW
STEEL



Survey Data Entry and Retrieval Application (SDERA) Print Output

Control Point Search Results

Derived Data - Denoted By:

**

Designation	BF6A1997	Record State	ACCEPTED
NGS PID			
Project Name	BF06 WELL SITE	Date Entered/Updated	06/27/2009
Updated By	ATLAS DATA LOAD	Status	
Party Chief	EBANKS, ELVIE	Type	V
Monument Set By	SOUTH FLORIDA WATER MANAGEMENT DISTRICT	Date Established	01/01/1997
County	BROWARD	Section	2
Township	48	Range	42
Quadrangle	WEST DIXIE BEND	Offset (29 to 88)	
NGS Source BM		CCR Link	
Ctrl Pt Source(s)			

<u>Horizontal</u>	<u>NAD 1927</u>	<u>NAD 1983</u>	<u>Vertical</u>	<u>NGVD 1929</u>	<u>NAVD 1988</u>
Latitude		26 18 52.0	Class		
Longitude		80 07 26.2	Order	3	
Northing(Y)			Elevation	13.24	
Easting(X)			Measurement Unit	Feet	
Class					
Order					
NAD83 Adj Year					

Field Book

BROWARD CO WELLS 11

Field Book Pages

16,17

Stamping

BF-06A 1997

How to Reach

Description

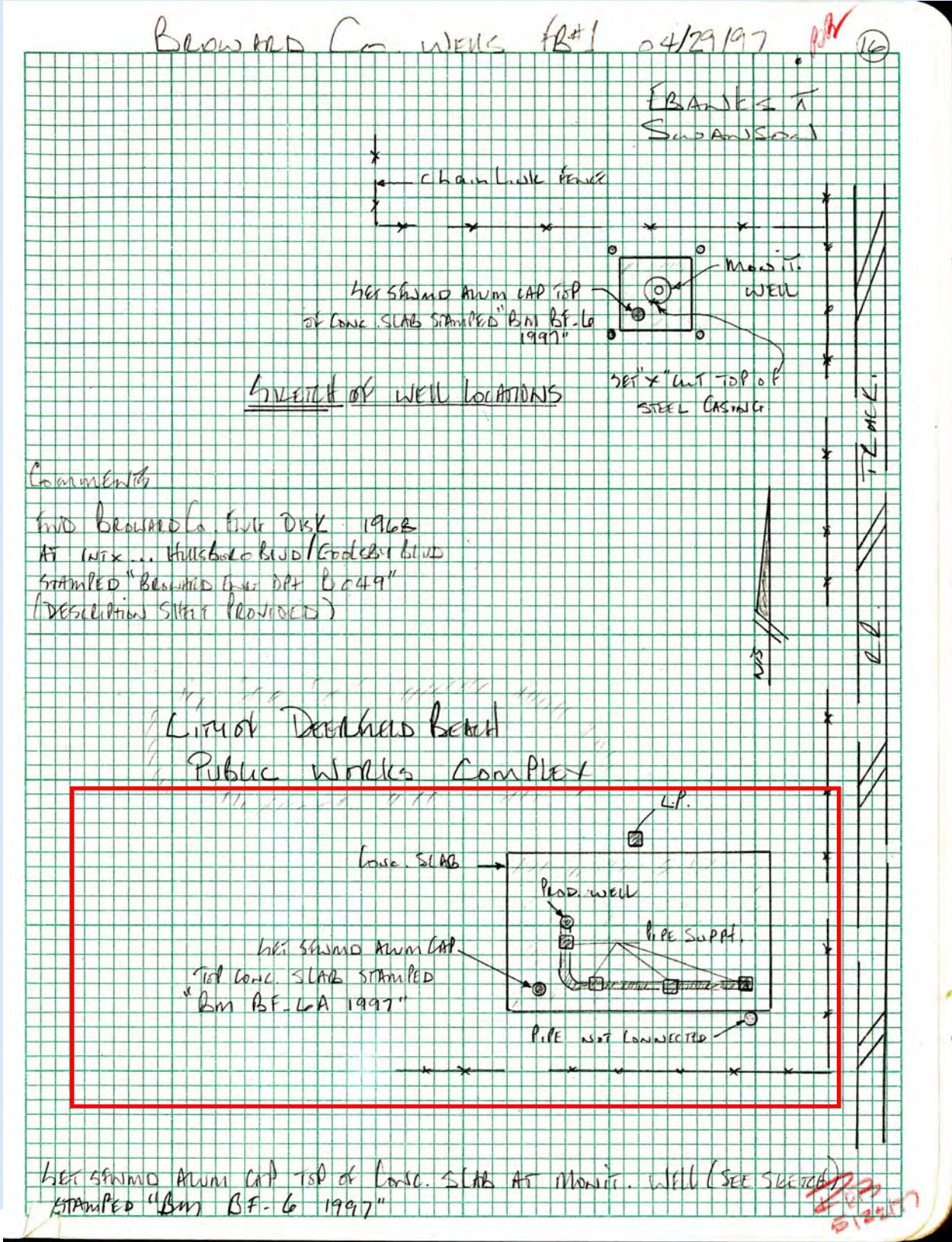
BM IS SFWMD ALUM CAP SET TOP OF CONC. SLAB FOR MONITORING/PRODUCTION WELL. BF-6 LOCATED AT THE DEERFIELD BEACH PUBLIC WORKS COMPLEX AT GOLLSBY BLVD. ENTRANCE THRU MOST SLY GATE. WELL & BM IS AT REAR OF PROPERTY SOUTH END.

Source Benchmark: Broward County B349

DISCLAIMER:

The South Florida Water Management District (hereinafter referred to as the DISTRICT) shall not be held liable for improper or incorrect use of the data, information, apparatus, products,

processes or materials described and/or contained herein. These data, information, apparatus, products, processes, materials and related graphics are not legal documents and are not intended to be used as such. The user hereby recognizes that the information, data, apparatus, products, processes and materials are dynamic and may change over time without notice. However, the DISTRICT makes no commitment to update the information, data, apparatus, products, processes or materials contained herein.



Job 019912442-001 (1968)

Job Edit

ENG Survey Benchmarks

Job 019912442-001 (1968)

Job Name: B.C.E.D. BM'S; Field Book: ; Stamp: BC 349

Status: Initiated

Created By: CONVERSION

Date Created: Jan 01, 1970

Date Completed:

Parent Job:

Specific Location:

Details

Benchmark Number	1968
Description	FROM THE INTERSECTION OF WEST HILLSBORO BOULEVARD AND POWERLINE ROAD, PROCEED EAST ALONG HILLSBORO BOULEVARD FOR ABOUT 1.6 MILE TO THE MARK. MARK IS LOCATED 42' NORTH OF THE SOUTH EDGE OF PAVEMENT OF THE SOUTH EDGE OF PAVEMENT OF THE EASTBOUND LANES OF HILLSBORO BOULEVARD, 95' EAST OF THE CENTERLINE OF GOOLSBY BLVD.-LOCK ROAD, 47.8' EAST OF WESTERN END OF THE MEDIAN OF THE E. MEDIAN OF THE CENTERLINE OF HILLSBORO BOULEVARD AT GOOLSBY BOULEVARD- LOCK RD. INTERSECTION. MARK IS A STANDARD BROWARD COUNTY BRASS DISC.
Elevation	NOT FOUND 3-01-06 15.446
Extension	
Field Book	
Job Name	B.C.E.D. BM'S
Miscellaneous	
Order	0
Stamp	BC 349

Details



STR 02-48-42