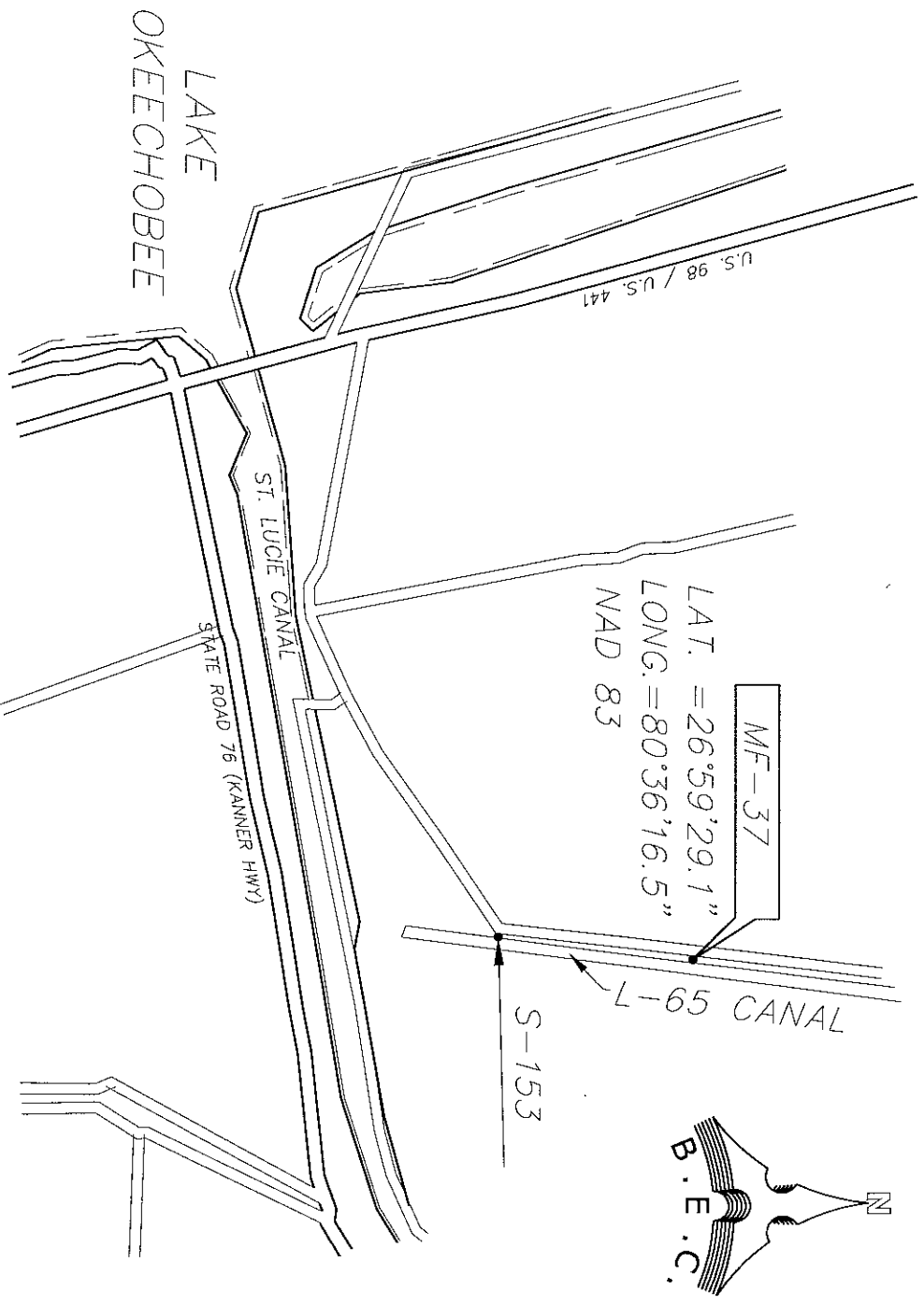


WETLITHEAD AS-BUILT

MF-37

SCALE: NOT TO SCALE



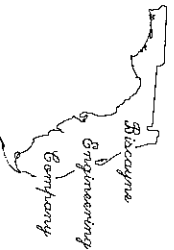
LOCATION SKETCH

MARTIN COUNTY

ORDER No.	03-76221
FIELD BOOK No.	2423/26, 2407/22
DATE:	2-08-02
FOR:	DIVERSIFIED DRILLING CO.

IN S.E. 1/4 OF SEC. 14 TWP 40 RNG 37

SHEET 1 OF 3



BISCAYNE ENGINEERING COMPANY, INC.
Consulting Engineers Planners Surveyors

MIAMI
529 WEST FLAGLER STREET
FLORIDA, 33130
PH: (305) 324-7671
FAX: (305) 324-0809

WEB SITE: www.biscayneengineering.com
E-MAIL: info@biscayneengineering.com

FT. LAUDERDALE
6561 SUNSET STRIP
SUNRISE, FLORIDA 33313
PH: (305) 748-1800
FAX: (305) 749-5826