

CLIENT City of Delray Beach Date July 20, 1988
Well No. G-2 Project No. SEP24708.A8

Location: State Florida County Palm Beach
 T. 46 R. 43 S. 4
 Logged by P. Kwiatkowski Observer L. Rainger

Owner City of Delray Beach
Well G-2
Driller Ground Water Protection Date Drilled: JULY 1988
 Surface Elevation: _____ ft. Estimated Above MSL
 Measured
 T.D. Logged 113' T.D. Driller 115'
 Hole Dia. 2" to 115'
 Casing Dia. N/A
 Finish: Open hole Screen Gravel Other
 Water Level: 2 ft. Above MP, AT Above Land Surface
 Below Below Pad Surface
 Yield: Flow n/a gpm Pump _____ gpm
 Drawdown: N/A ft. after _____ hours pumping @ _____ gpm
 Use: Dom. Stock PS Ind. Irr. Test
 Heating or cooling Drainage Disposal Obs.
 Water Quality: N/A Drilling Mud
 Temp. _____ °F; Sp. Cond. _____ mg/L
 Cl⁻ _____ mg/L; SO₄²⁻ _____ mg/L; Total Hardness _____ mg/L
 Color _____ Odor _____ Taste _____

Remarks: _____

CH2M HILL GEOPHYSICAL WELL SURVEY

- Electric
- 16" Normal
- 64" Normal
- Single Point
- S.P.
- Caliper
- Fluid Resistivity
- Fluid Velocity
- Gamma Ray
- Temperature

Log Scales

Electric Log Fluid Resistivity
 SP 40 millivolts/inch _____ ohm meters/inch
 Res. 20 ohm-meters/inch
 Res. _____ ohms/inch @ _____ °F

Gamma Ray Log Fluid Velocity
 10 Counts/sec/inch _____ Counts/min/inch
 Time Constant 4 sec. _____ FPM (Continuous)
 Logging speed 25 FPM Q = _____ gpm

Temperature _____ °F to _____ °F Caliper _____ inches to _____ inches
 Logging speed _____ FPM Logging speed _____ FPM

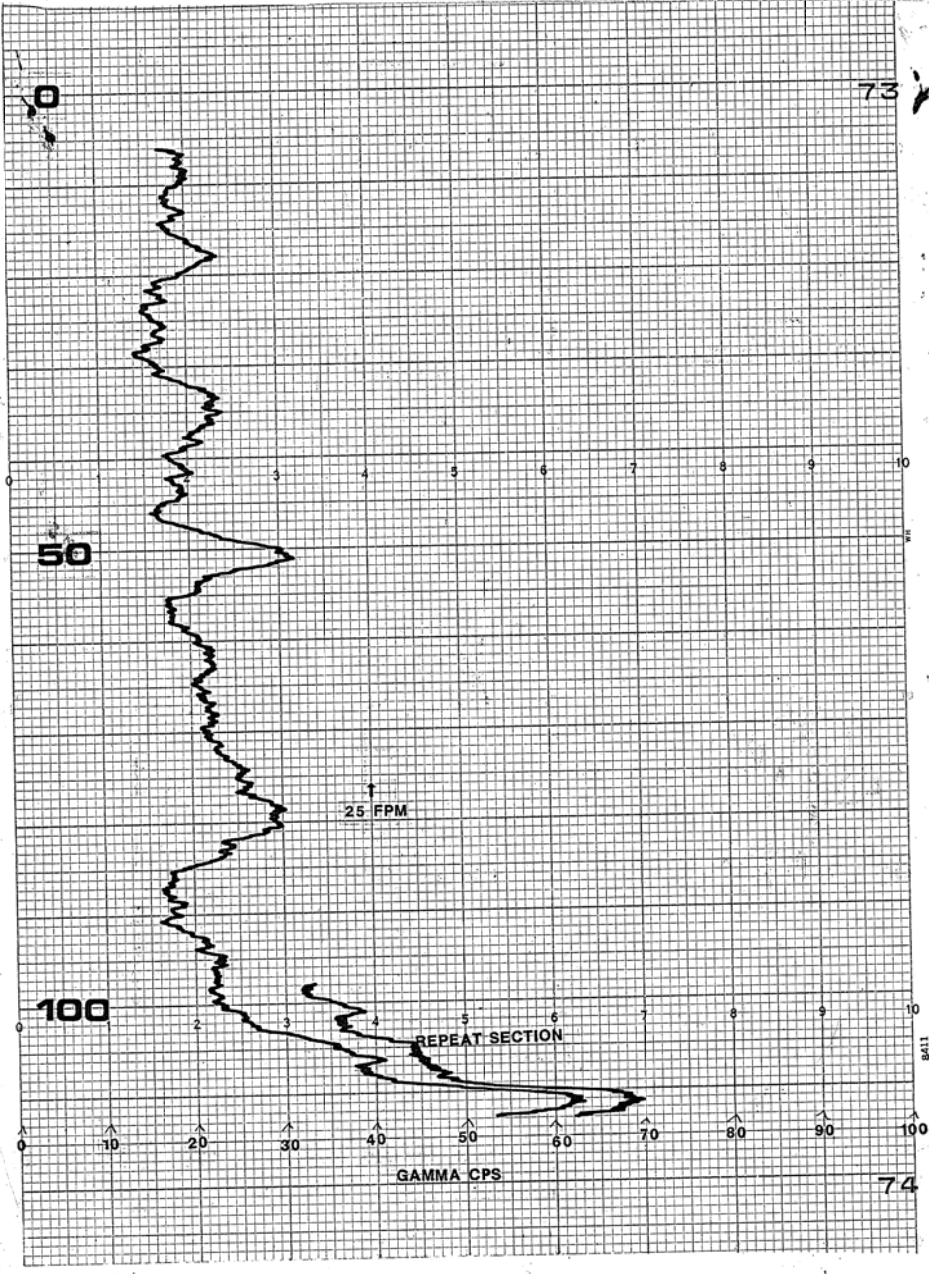
Water Samples
 Depths sampled: _____

CH2M HILL
 Water Resources Division
 P.O. Box 1647
 Gainesville, Florida 32620
 904/377-0442

Fort Myers Office
 The Financial Center
 1550 College Parkway, Suite 307
 Fort Myers, Florida 33907
 813/275-3121

Deerfield Beach Office
 Hillsboro Executive Center North
 350 Fairway Drive, Suite 210
 Deerfield Beach, Florida 33441
 Palm Beach County—305/395-3800
 Broward County—305/426-4006

Tampa Office
 Rocky Point Centre
 3030 North Rocky Point Drive, West
 Suite 350
 Tampa Florida 33607
 Hillsborough County—813/888-6777
 Pinellas County—813/558-9454



TEXAS INSTRUMENTS INCORPORATED, HOUSTON, TEXAS, U.S.A. CHART NO. W-15
 MADE IN U.S.A.

8411