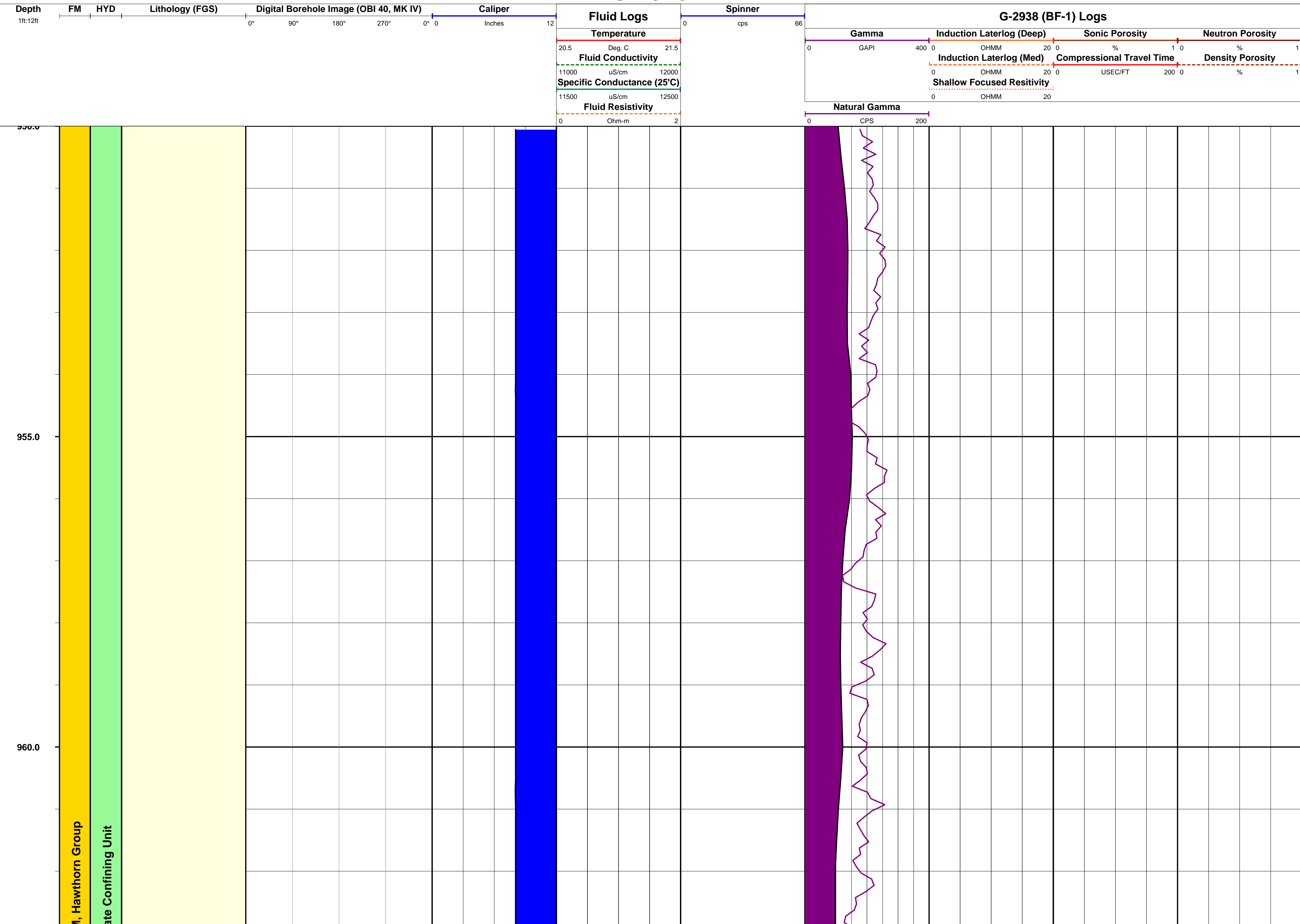
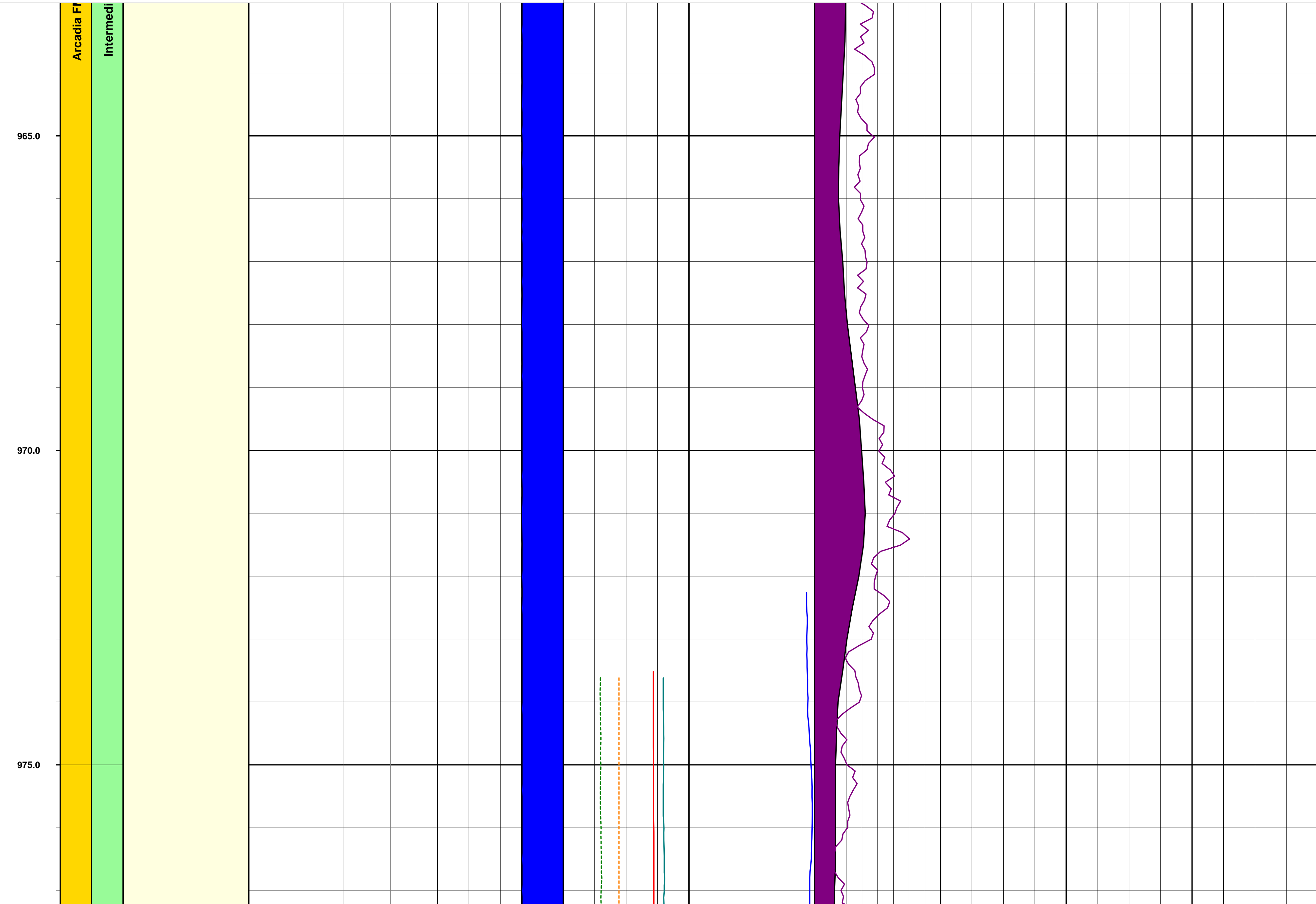
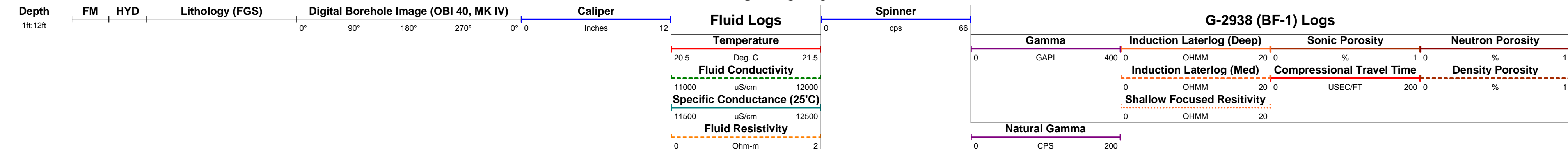


WELL G-2940 (BF-3) PROJECT Broward Floridan Study DATE OF COMPLETION 1993  
 LOCATION 26-10-24 N (GPS, NAD 83) ELEVATION 9.38 Feet (Land surface, NGVD 29) WELL DEPTH 2280 Feet TD (2080 COMP)  
080-10-42 W DATE OF INITIAL LOGGING 11 February 1993

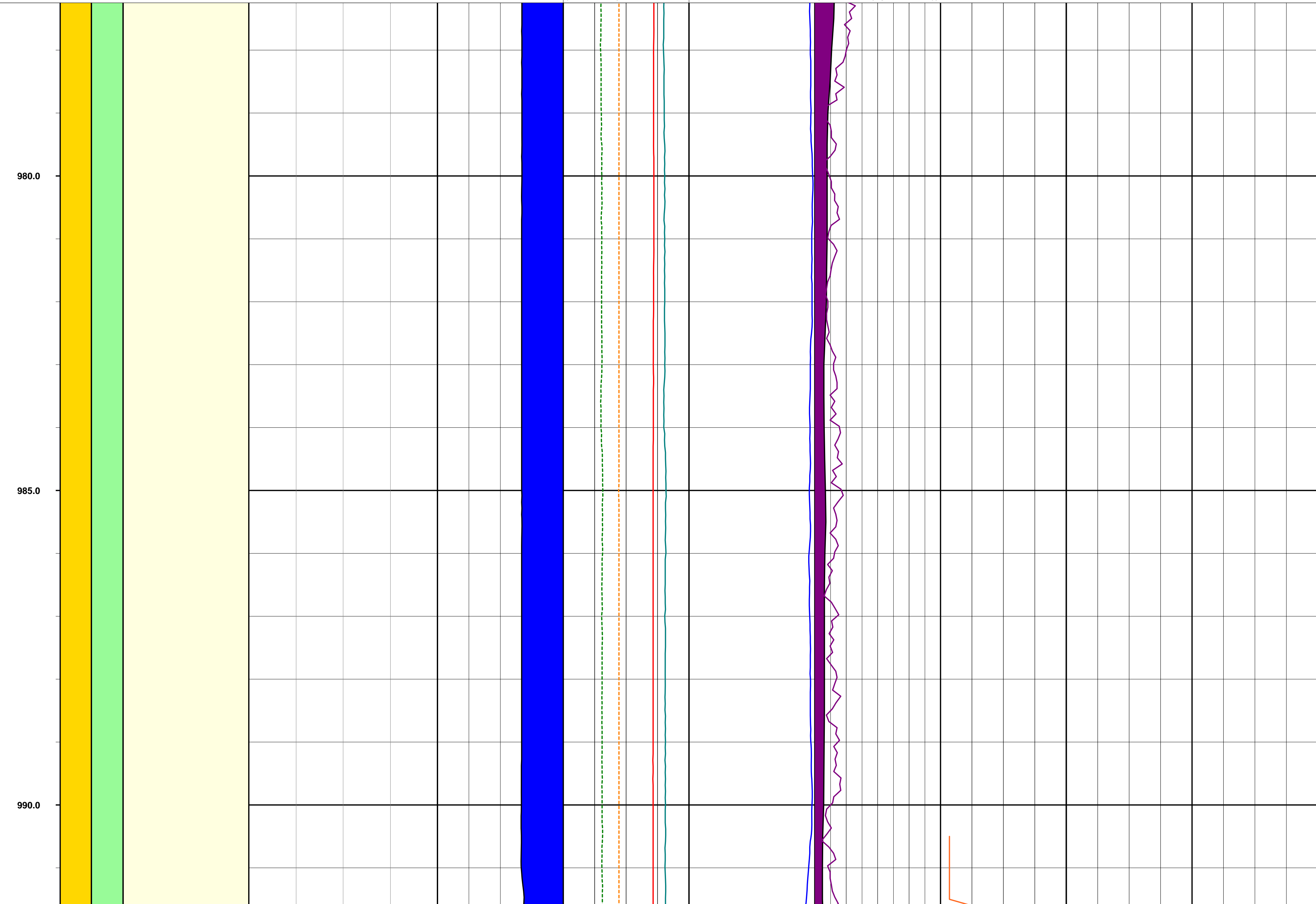
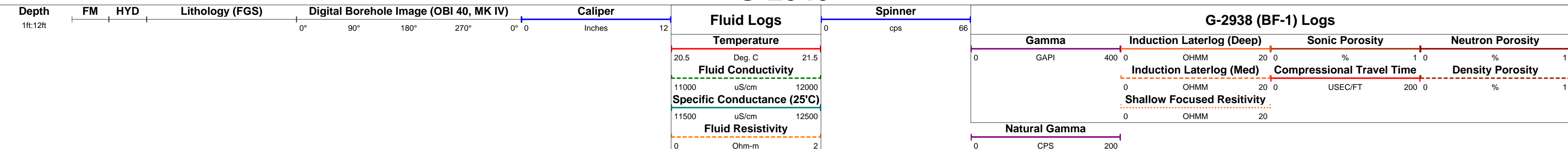
### G-2940



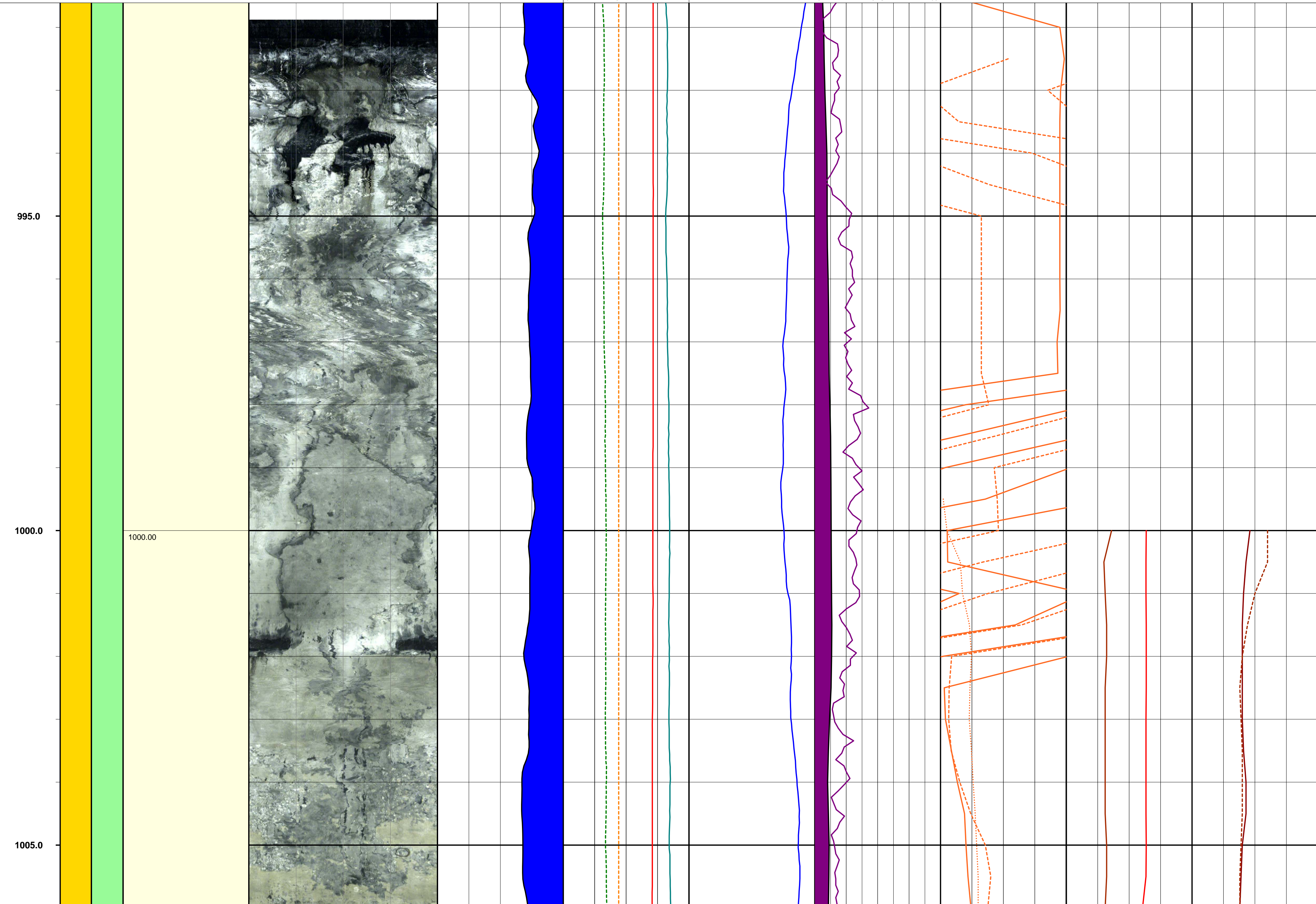
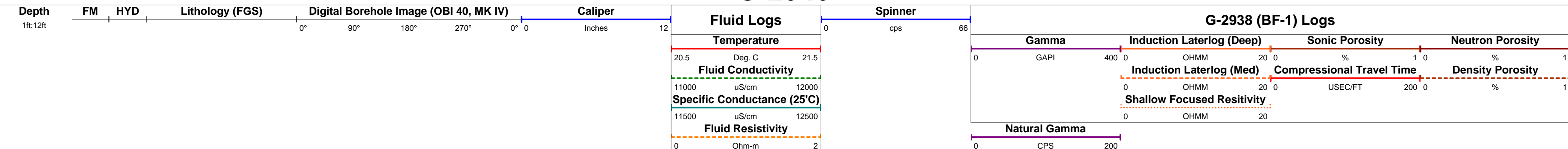
# G-2940



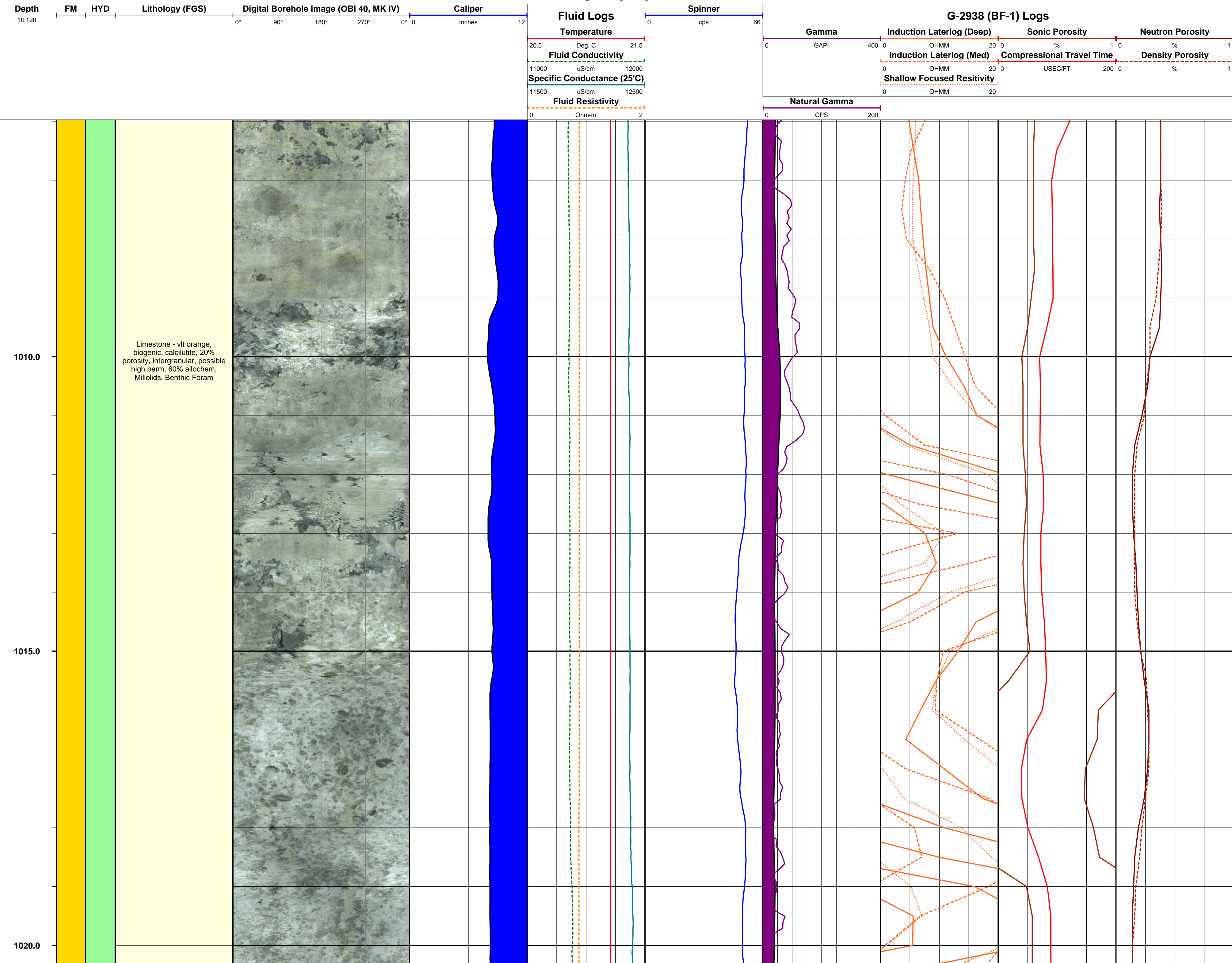
# G-2940



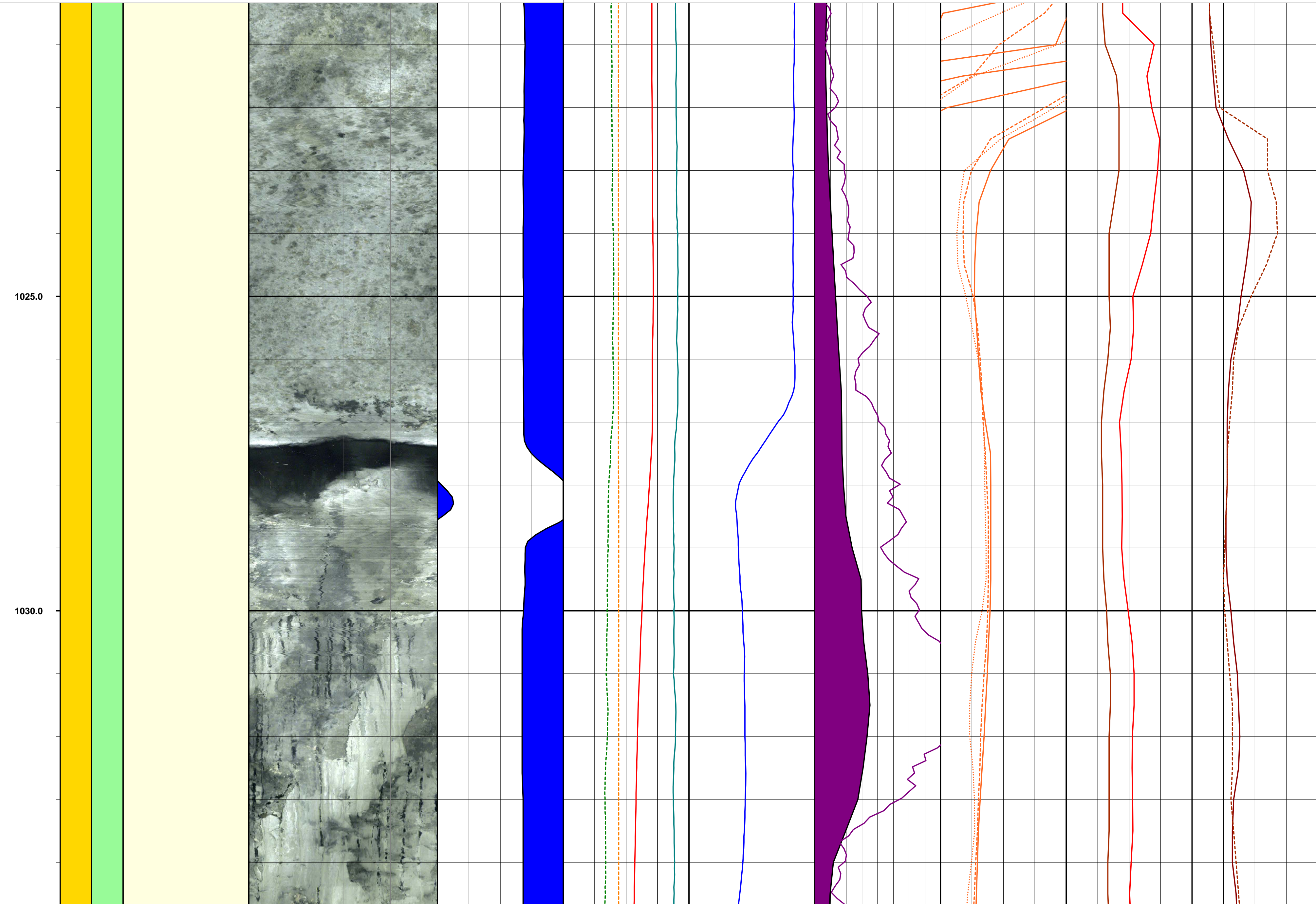
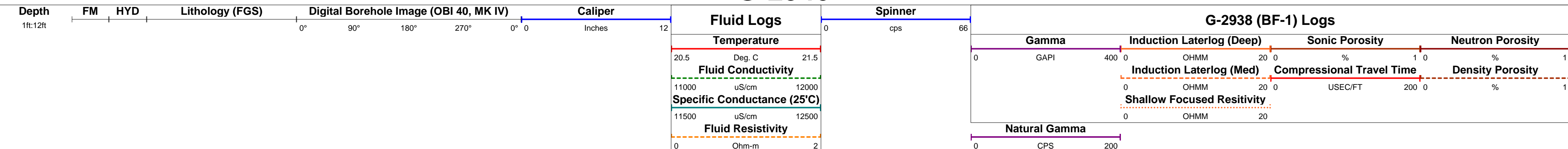
# G-2940



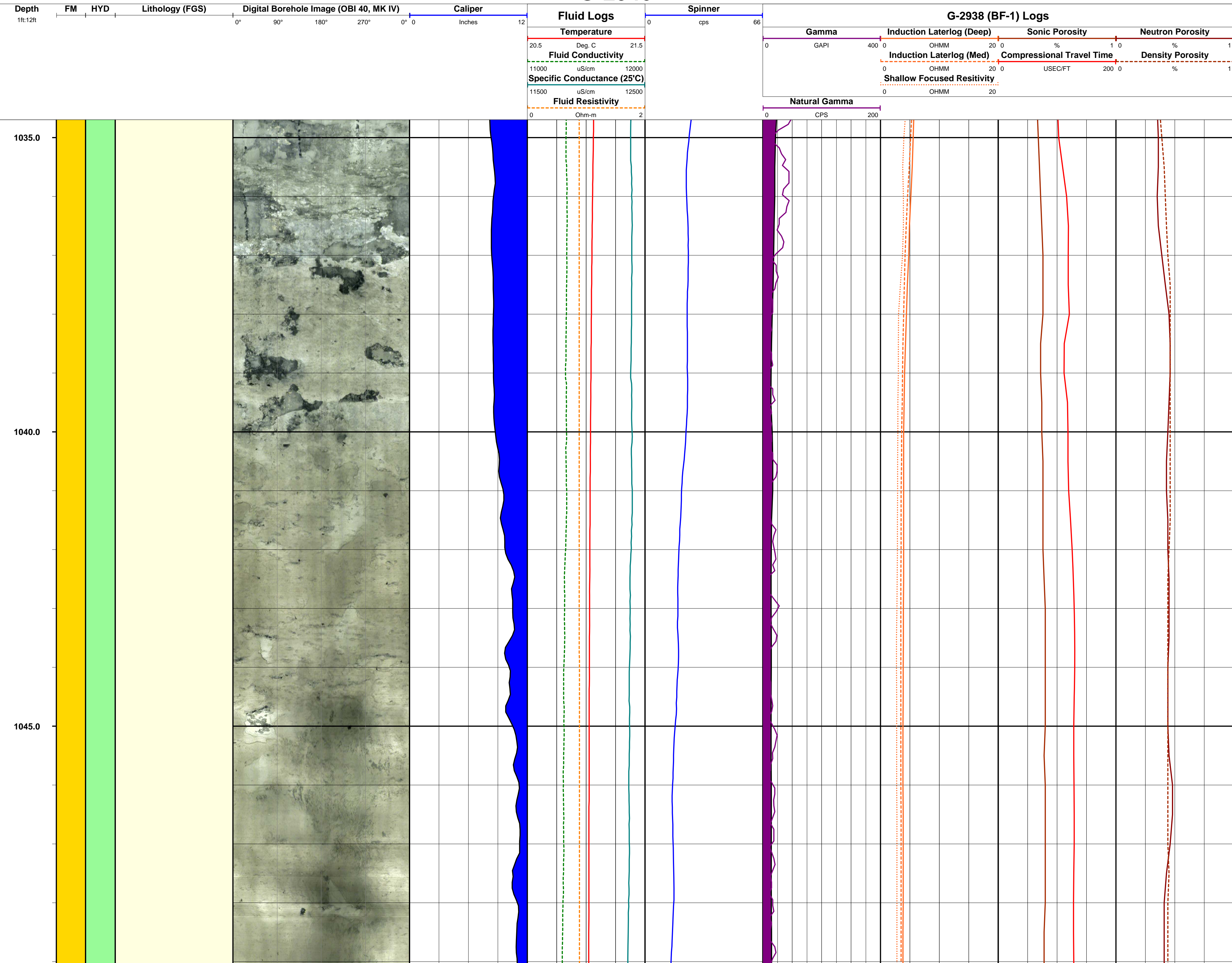
# G-2940



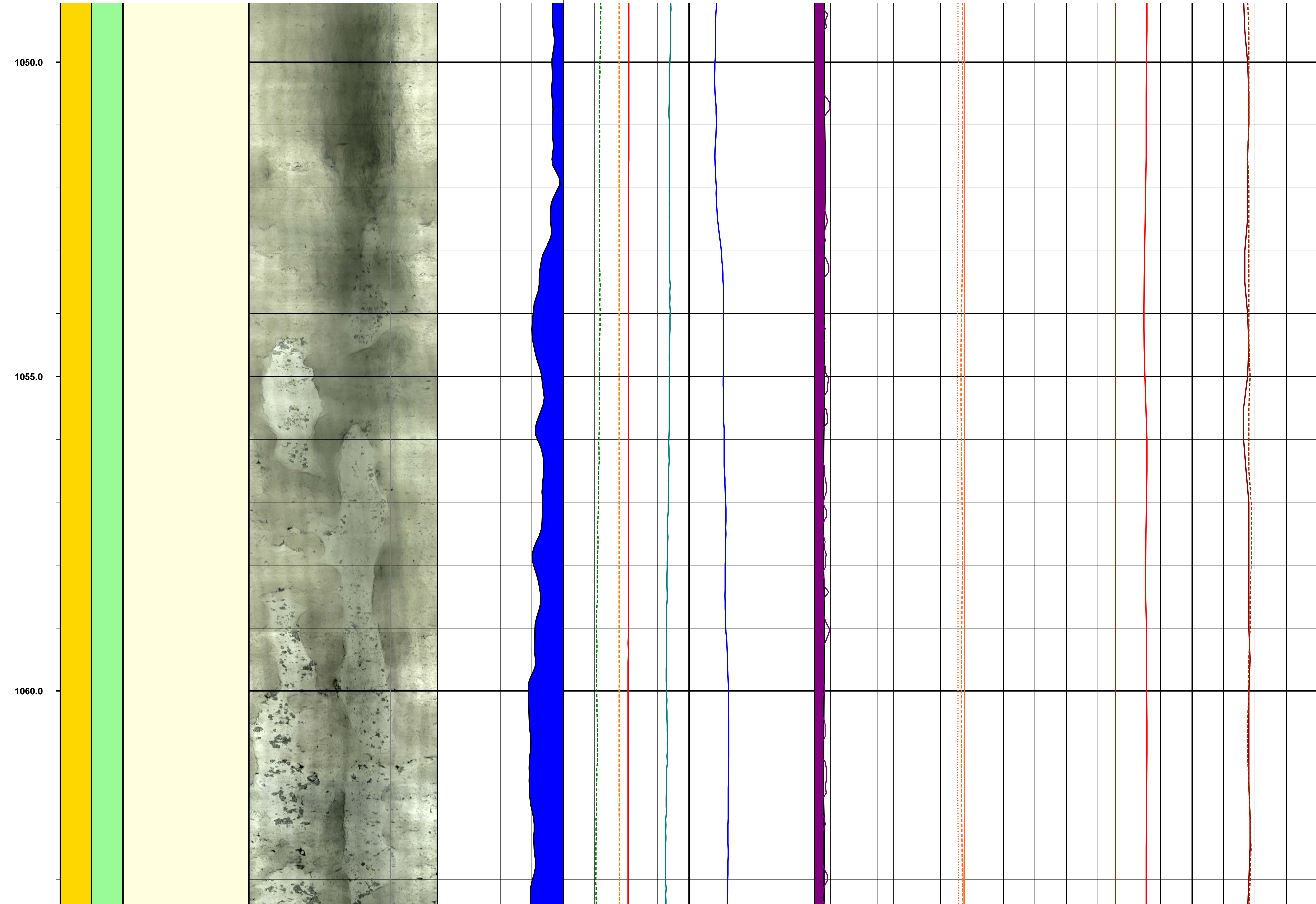
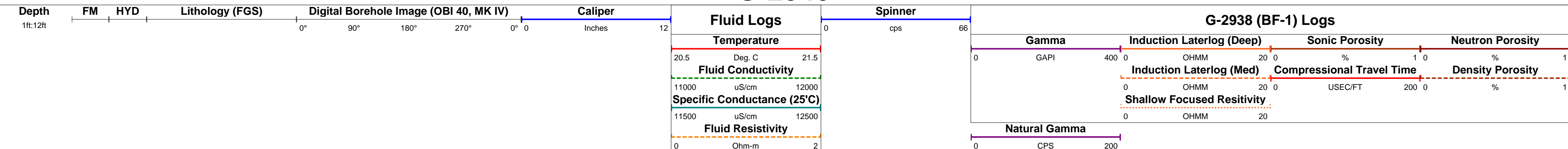
# G-2940



# G-2940

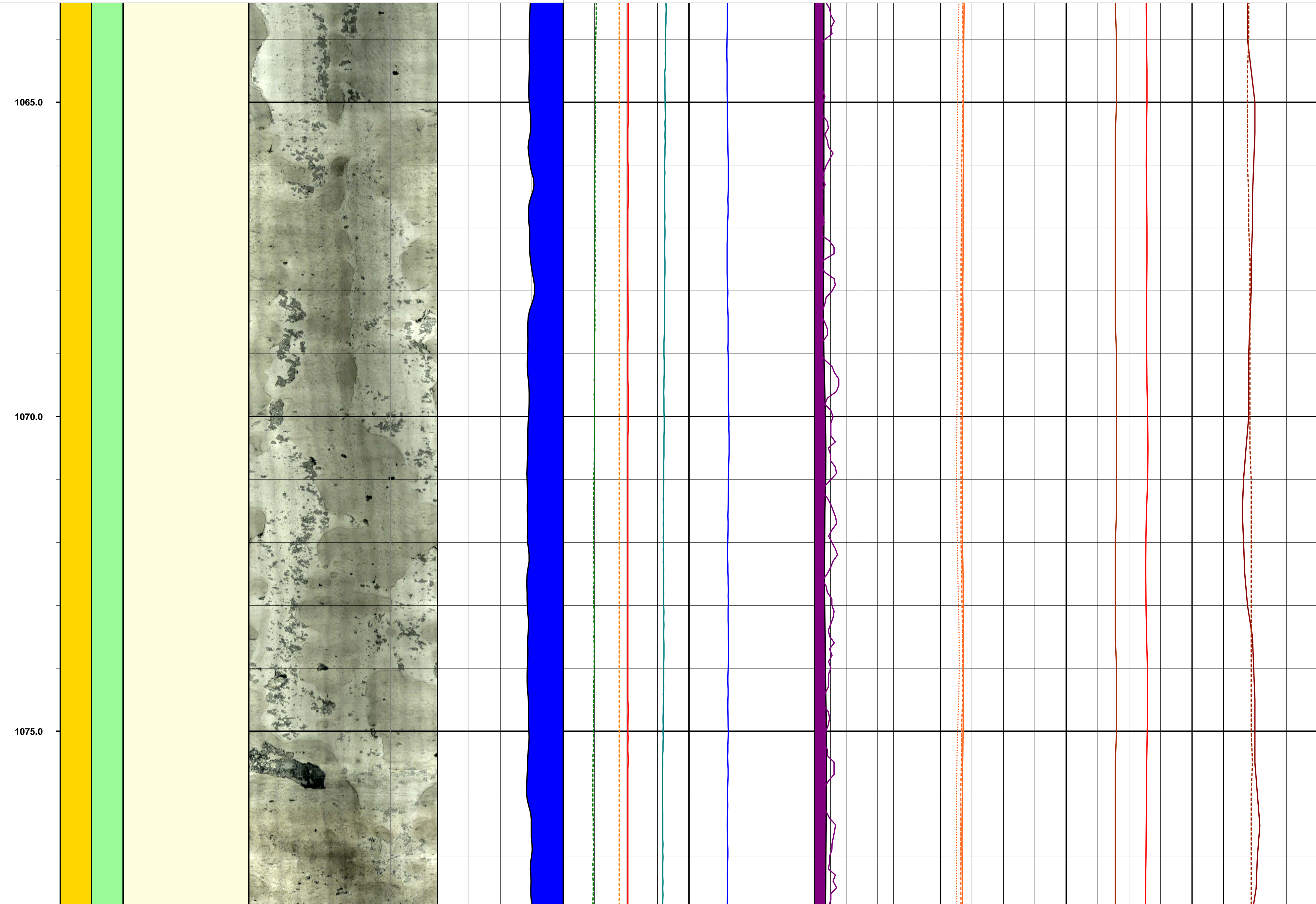
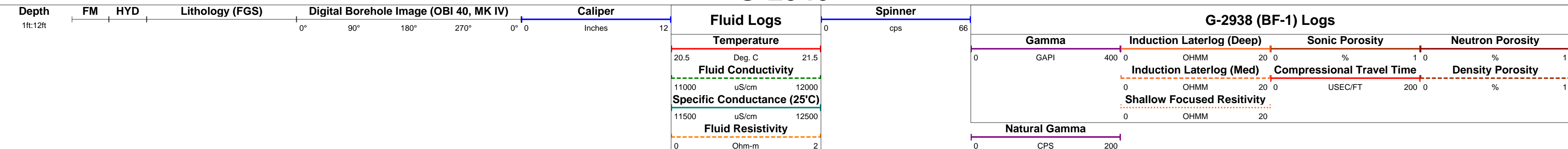


# G-2940

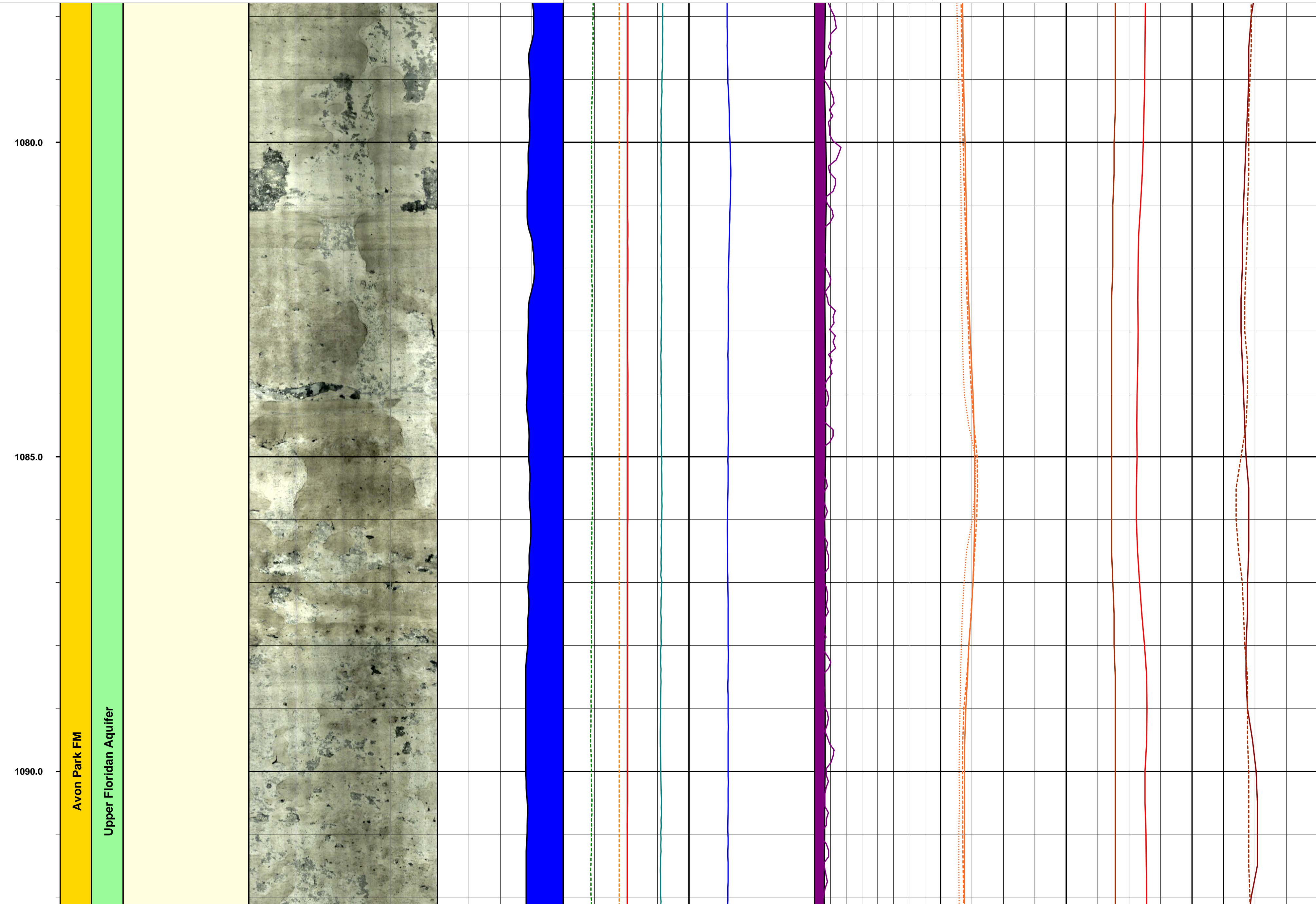
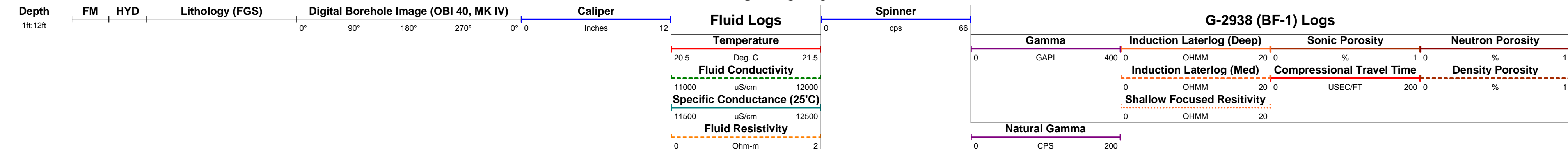




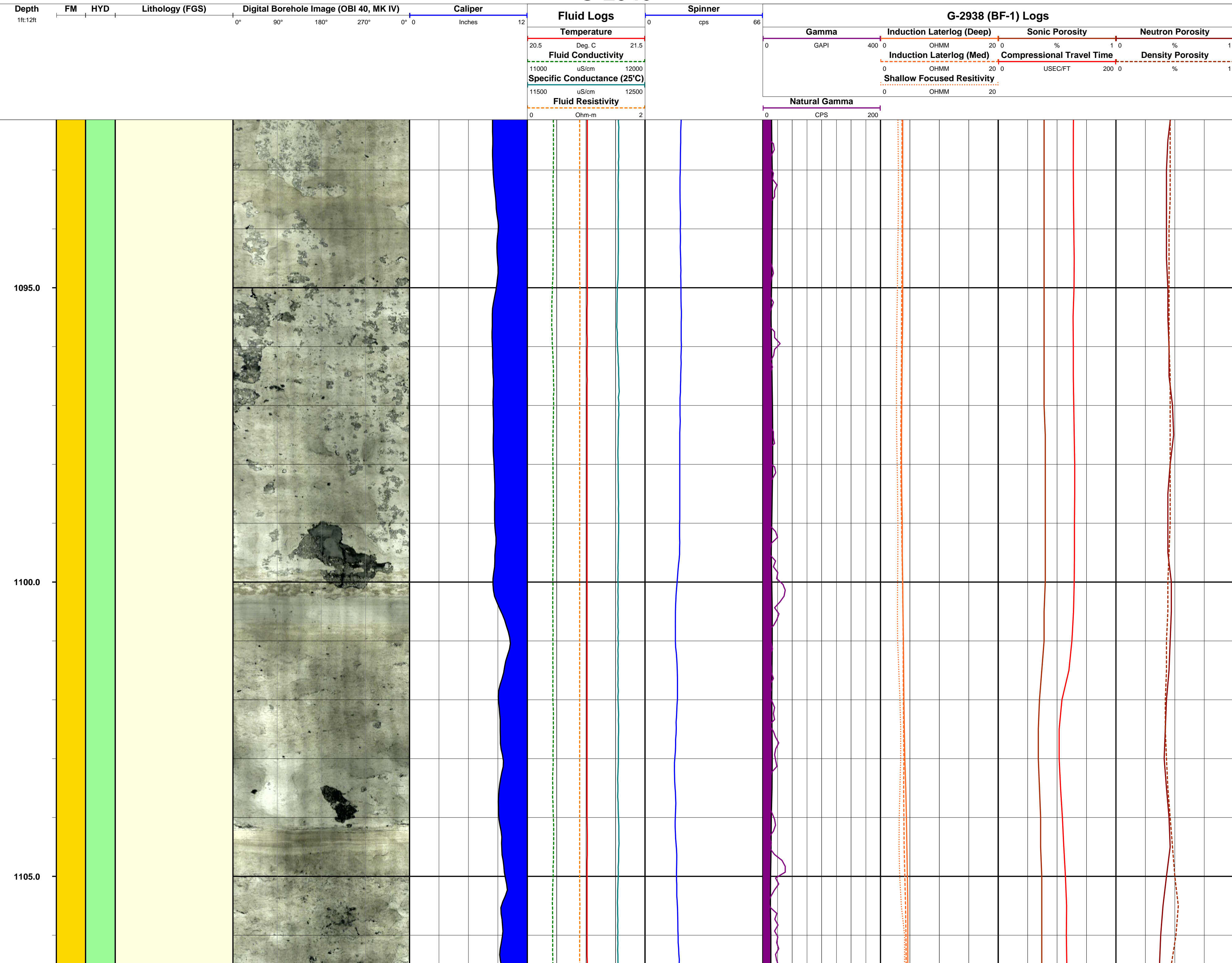
# G-2940



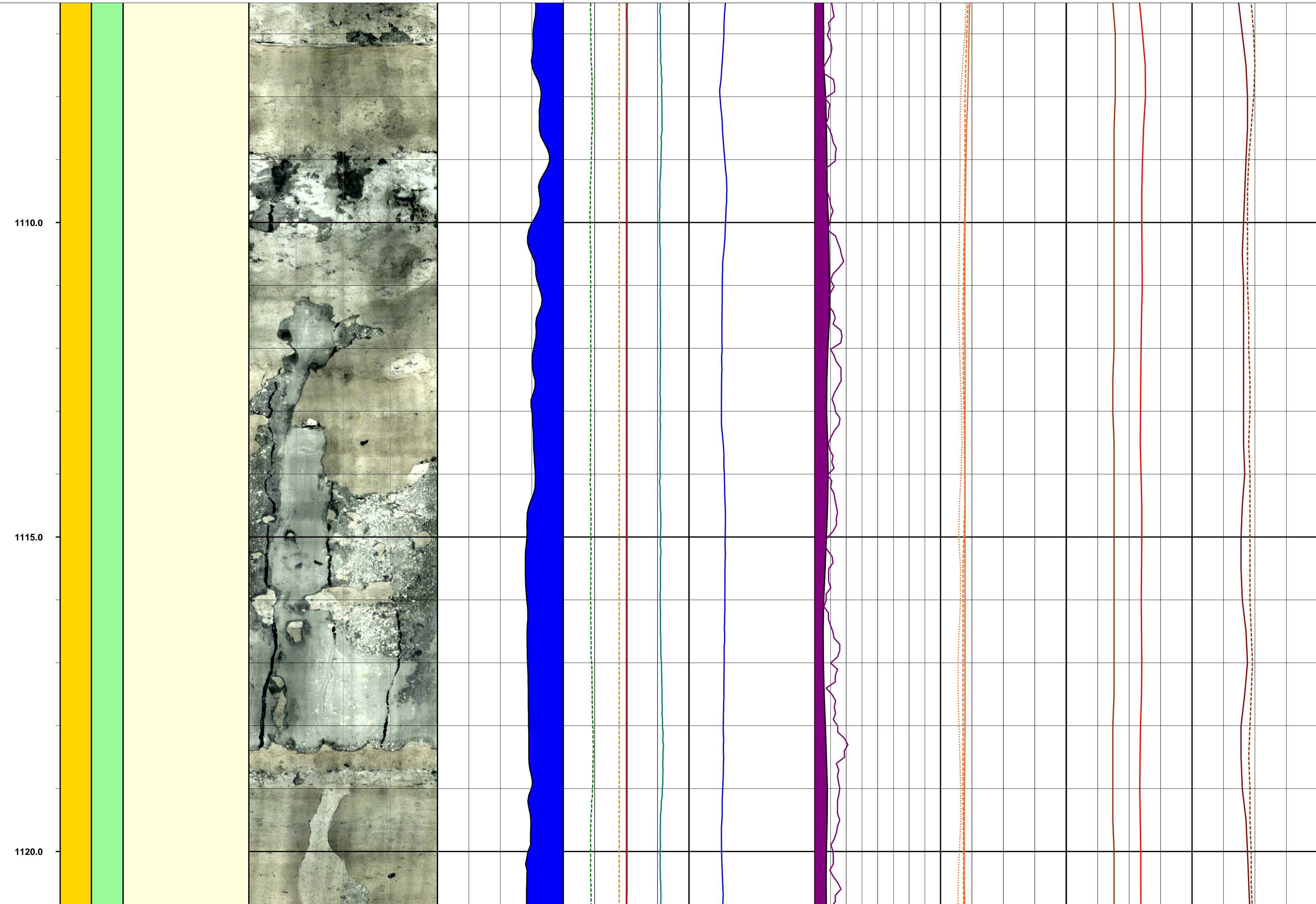
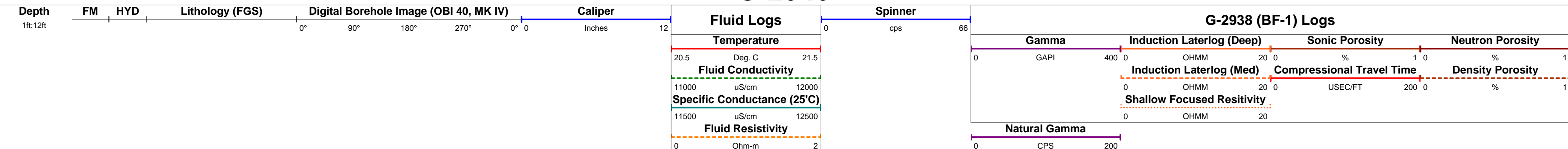
# G-2940



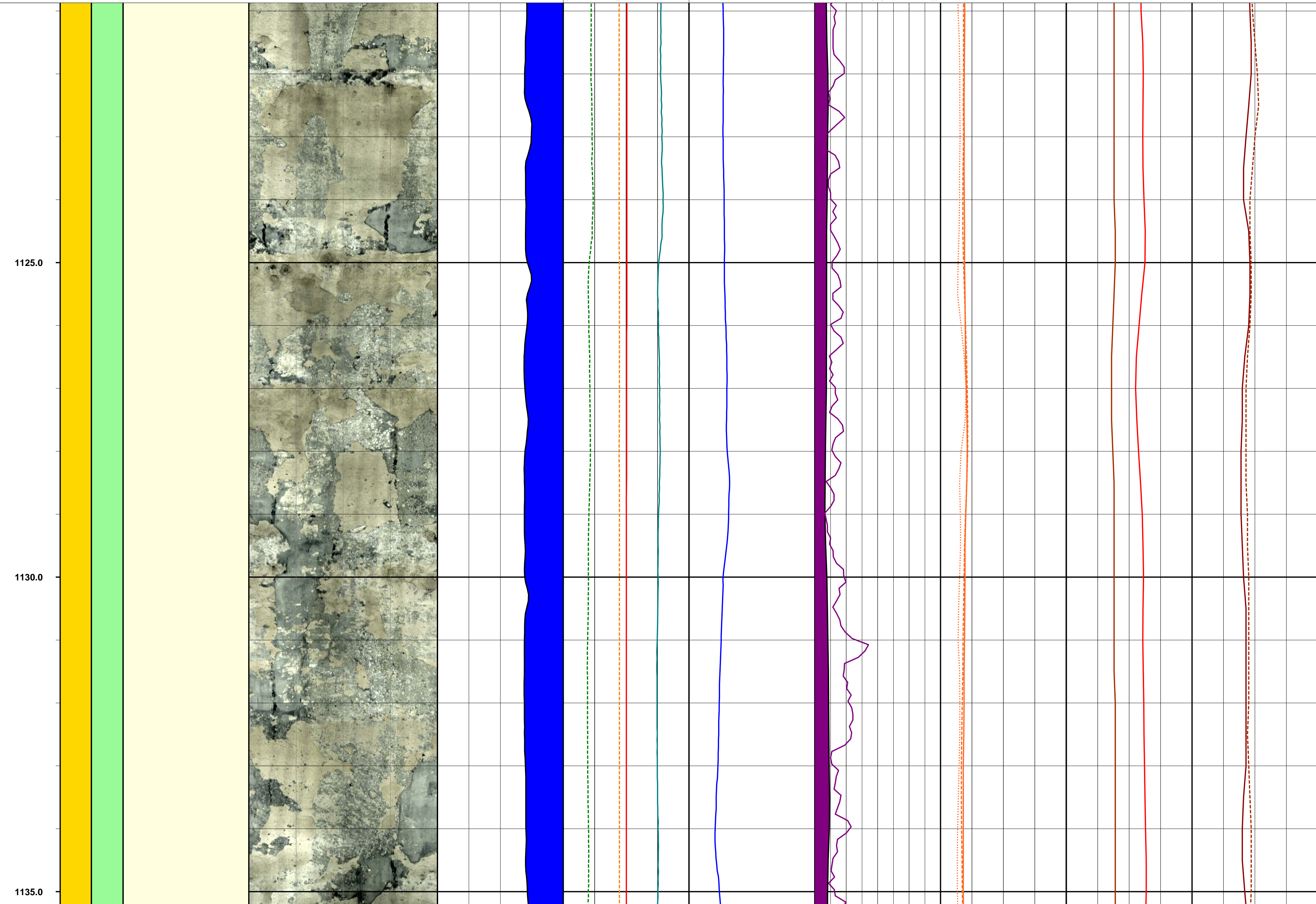
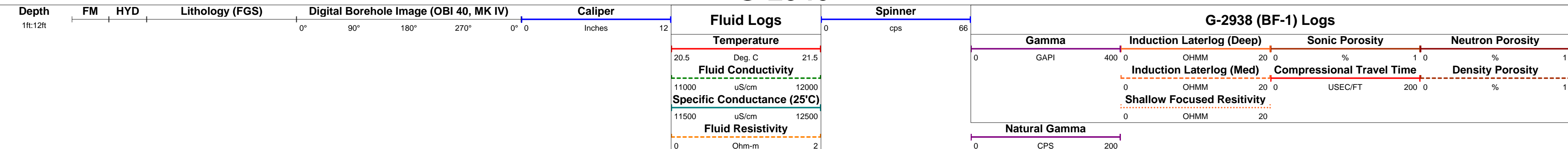
# G-2940



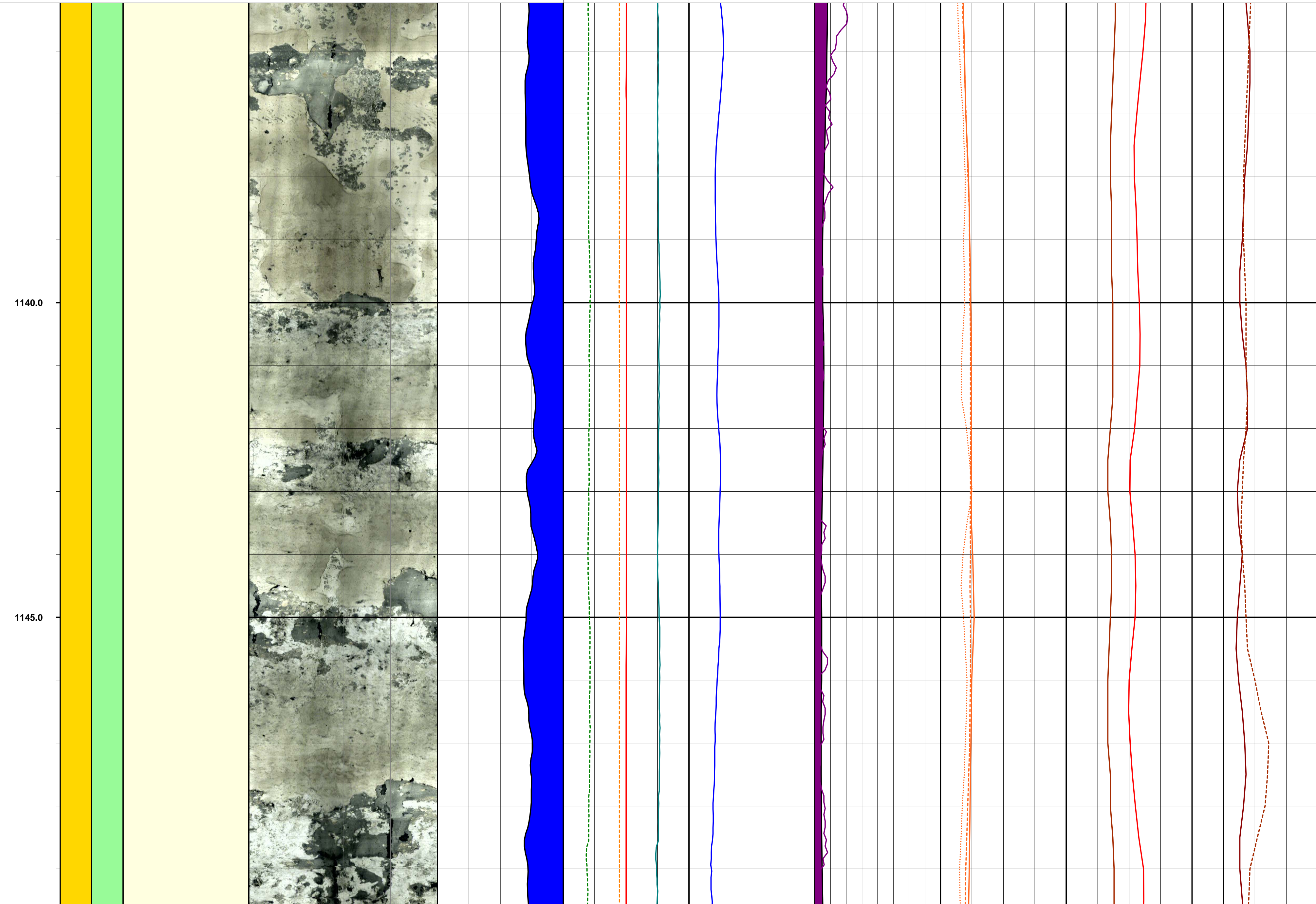
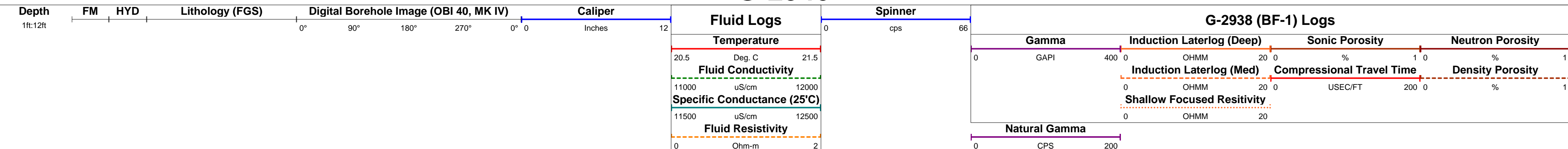
# G-2940



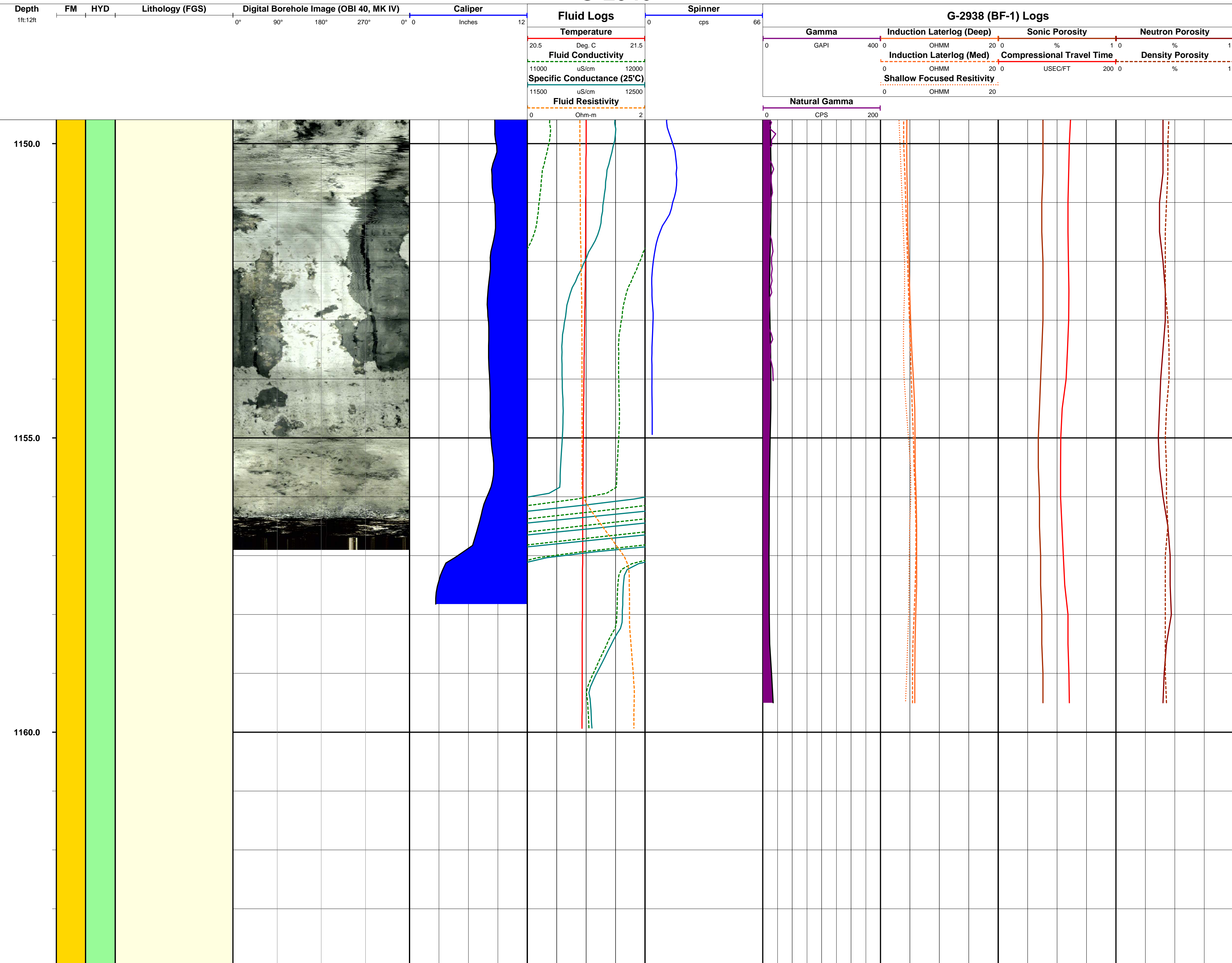
# G-2940



# G-2940



# G-2940



# G-2940

Depth 1ft:12ft  
FM HYD  
Lithology (FGS)  
Digital Borehole Image (OBI 40, MK IV)  
0° 90° 180° 270° 0° 0

Caliper  
Inches 12

### Fluid Logs

Temperature  
20.5 Deg. C 21.5

Fluid Conductivity  
11000 uS/cm 12000

Specific Conductance (25°C)  
11500 uS/cm 12500

Fluid Resistivity  
0 Ohm-m 2

Spinner  
0 cps 66

### G-2938 (BF-1) Logs

Gamma GAPI 400 0  
Induction Laterlog (Deep) OHMM 20 0  
Sonic Porosity % 1 0  
Neutron Porosity % 1

Induction Laterlog (Med) OHMM 20 0  
Compressional Travel Time USEC/FT 200 0  
Density Porosity % 1

Shallow Focused Resistivity  
0 OHMM 20

Natural Gamma  
0 CPS 200

1165.0

1170.0

1175.0



# G-2940

|                   |    |     |                 |  |                   |                       |                             |                |                    |                                   |                     |                       |
|-------------------|----|-----|-----------------|--|-------------------|-----------------------|-----------------------------|----------------|--------------------|-----------------------------------|---------------------|-----------------------|
| Depth<br>1ft:12ft | FM | HYD | Lithology (FGS) | Digital Borehole Image (OBI 40, MK IV) | Caliper<br>Inches | Fluid Logs            |                             | Spinner<br>cps | G-2938 (BF-1) Logs |                                   |                     |                       |
|                   |    |     |                 |  |                   | Temperature<br>Deg. C | Fluid Conductivity<br>uS/cm |                | Gamma<br>GAPI      | Induction Laterlog (Deep)<br>OHMM | Sonic Porosity<br>% | Neutron Porosity<br>% |

| Depth  | FM | HYD | Lithology (FGS) | Digital Borehole Image (OBI 40, MK IV) | Caliper | Temperature | Fluid Conductivity | Specific Conductance (25°C) | Fluid Resistivity | Spinner | Gamma | Induction Laterlog (Deep) | Sonic Porosity | Neutron Porosity | Induction Laterlog (Med) | Compressional Travel Time | Density Porosity |
|--------|----|-----|-----------------|--|---------|-------------|--------------------|-----------------------------|-------------------|---------|-------|---------------------------|----------------|------------------|--------------------------|---------------------------|------------------|
| 1180.0 |    |     |                 |  |         |             |                    |                             |                   |         |       |                           |                |                  |                          |                           |                  |
| 1185.0 |    |     |                 |  |         |             |                    |                             |                   |         |       |                           |                |                  |                          |                           |                  |
| 1190.0 |    |     |                 |  |         |             |                    |                             |                   |         |       |                           |                |                  |                          |                           |                  |

# G-2940

| Depth<br><small>1ft:12ft</small> | FM | HYD | Lithology (FGS) | Digital Borehole Image (OBI 40, MK IV) | Caliper<br><small>Inches</small> | Fluid Logs  | Spinner<br><small>cps</small> | G-2938 (BF-1) Logs                                 |  |                                    |                                      |   |   |                                      |
|----------------------------------|----|-----|-----------------|--|----------------------------------|---|-------------------------------|--|--|------------------------------------|--------------------------------------|---|---|--------------------------------------|
|                                  |    |     |                 | 0° 90° 180° 270° 0° 0                  | 0 12                             | 0 66  |                               | 0 400 0 20 0                                       | 0 1 0  | 0 1                                | 0 200 0                              | 0 1   | 0 1   |                                      |
|                                  |    |     |                 |  |                                  | Temperature<br><small>Deg. C</small>                |                               | Gamma<br><small>GAPI</small>                       | Induction Laterlog (Deep)<br><small>OHMM</small> | Sonic Porosity<br><small>%</small> | Neutron Porosity<br><small>%</small> | Induction Laterlog (Med)<br><small>OHMM</small> | Compressional Travel Time<br><small>USEC/FT</small> | Density Porosity<br><small>%</small> |
|                                  |    |     |                 |  |                                  | 20.5 21.5   |                               | Shallow Focused Resistivity<br><small>OHMM</small> | 0 20   |                                    |                                      | 0 20  |   |                                      |
|                                  |    |     |                 |  |                                  | Fluid Conductivity<br><small>uS/cm</small>          |                               | Natural Gamma<br><small>CPS</small>                |  |                                    |                                      |   |   |                                      |
|                                  |    |     |                 |  |                                  | 11000 12000   |                               |  |  |                                    |                                      |   |   |                                      |
|                                  |    |     |                 |  |                                  | Specific Conductance (25°C)<br><small>uS/cm</small> |                               |  |  |                                    |                                      |   |   |                                      |
|                                  |    |     |                 |  |                                  | 11500 12500   |                               |  |  |                                    |                                      |   |   |                                      |
|                                  |    |     |                 |  |                                  | Fluid Resistivity<br><small>Ohm-m</small>           |                               |  |  |                                    |                                      |   |   |                                      |
|                                  |    |     |                 |  |                                  | 0 2   |                               |  |  |                                    |                                      |   |   |                                      |

