



# RMBAKER LLC

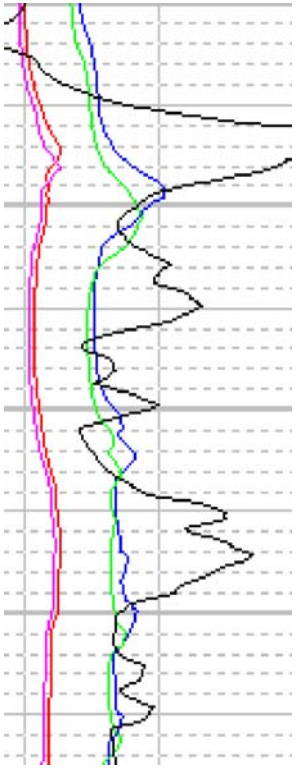
WELL ID: BR-23A  
LOG STAGE: PRELIMINARY

Geology and Geophysics

8600 Oldbridge Lane  
Orlando, FL 32819  
mobile ph 407-733-8958  
fax 407-370-4129

rob@rmbaker.com  
www.rmbaker.com

Licensed and Insured



**CO: RMBAKER LLC**  
**WELL: BR-23A**  
**FLD:**  
**CTY: PALM BEACH GARD.**  
**STE: FLORIDA**

COMPANY: RMBAKER LLC  
 COLLAR/WELL ID: BR-23A  
 FIELD:  
 COUNTRY: USA STATE: FLORIDA

LOCATION:  
 SEC TWP RGE  
 ELEVATION:  
 COORDINATES:

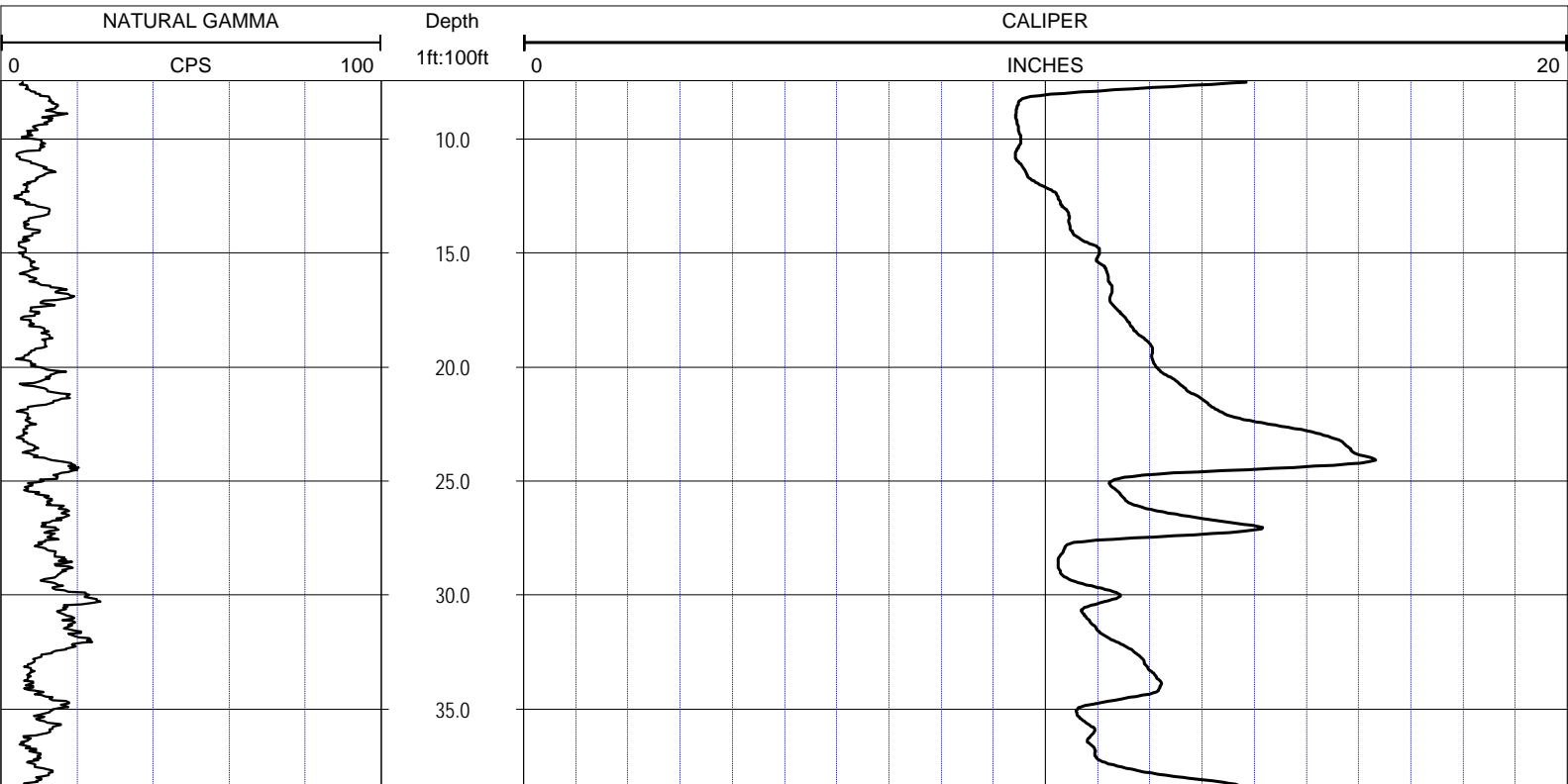
ALL SERVICES:  
 CALIPER  
 GAMMA  
 DUAL INDUCTION  
 ELECTRIC LOG

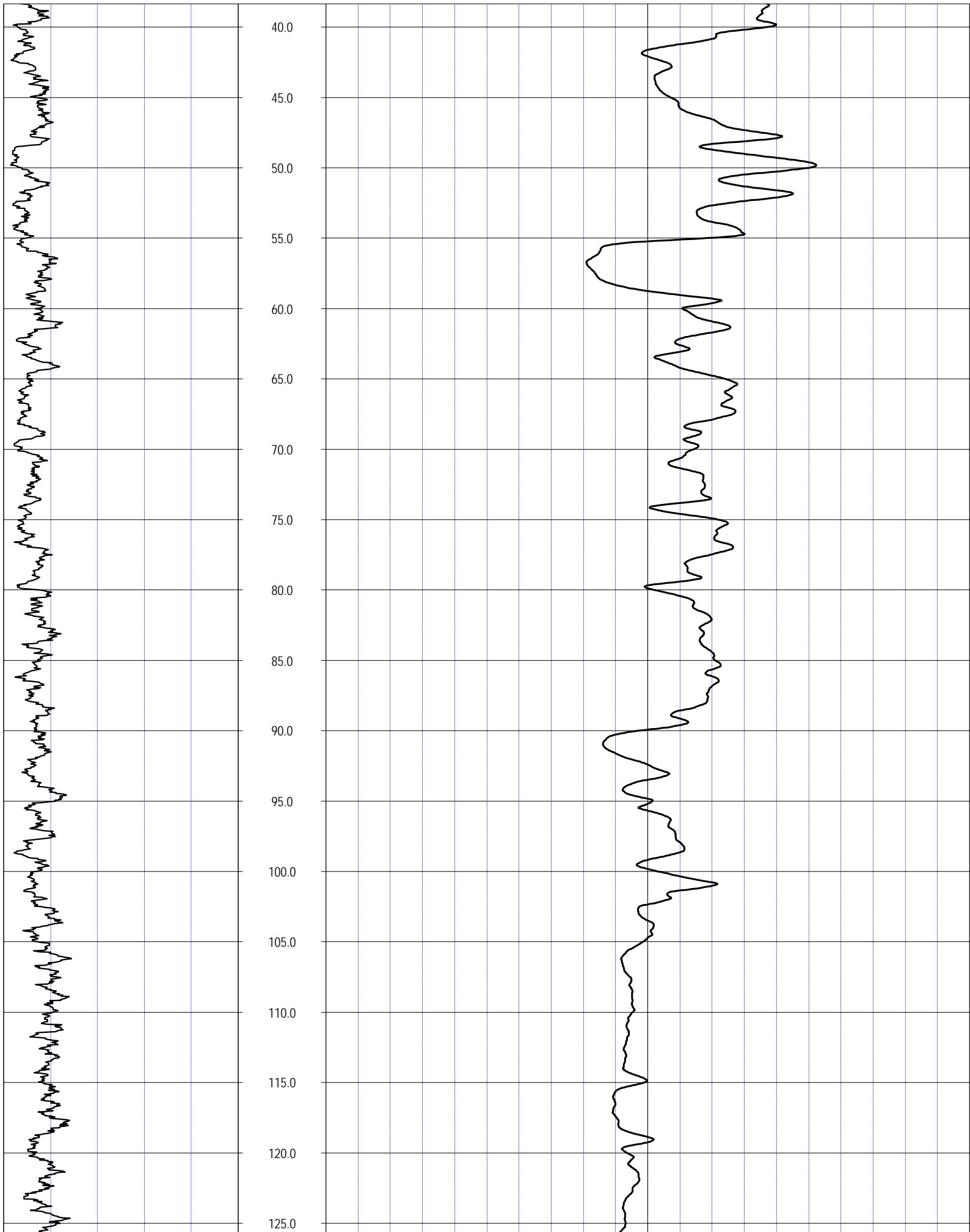
NOTES:  
 CASING IS TEMPORARY WITH 1.42 FT STICK-UP ABOVE GROUND SURF.

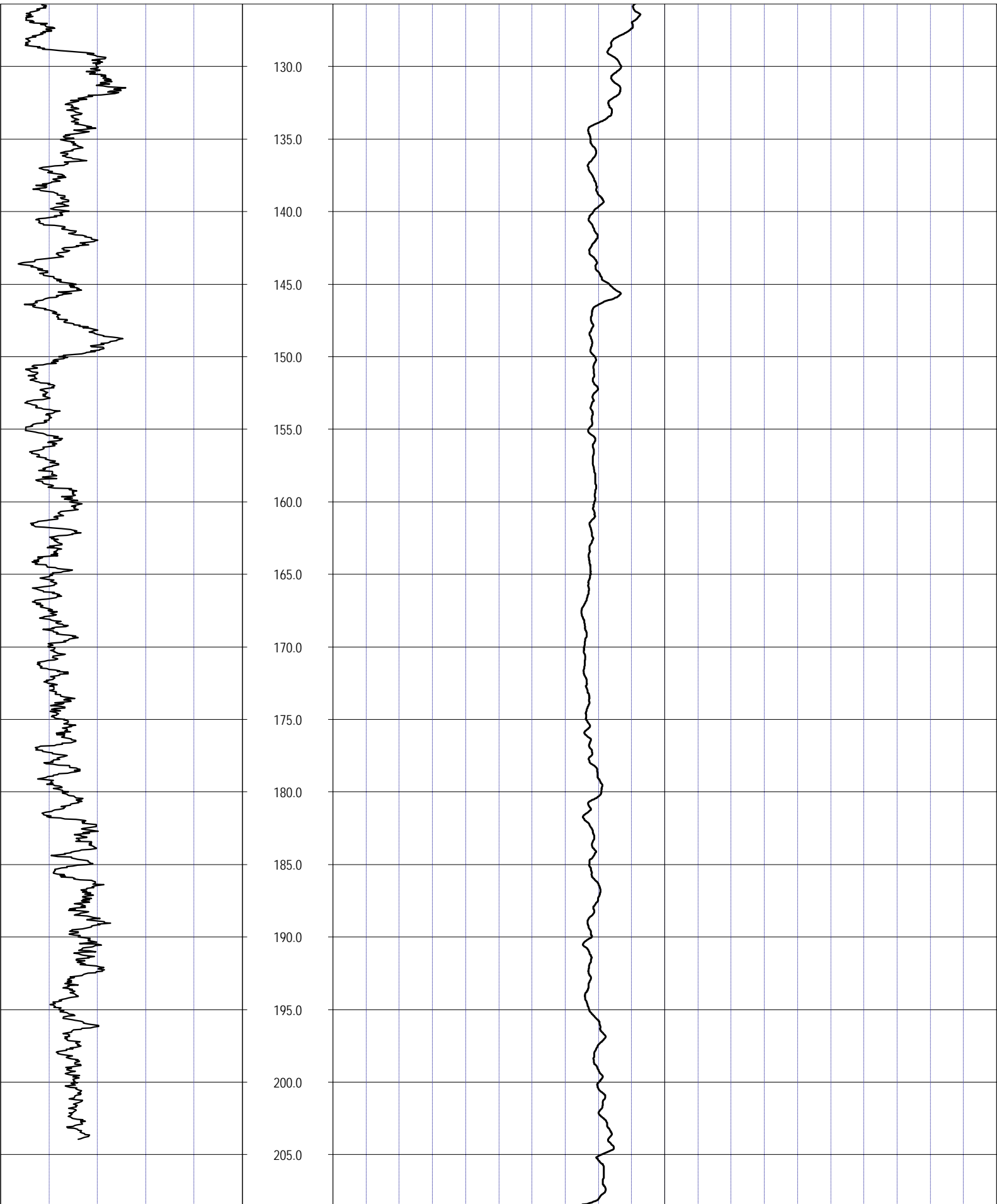
PERMANENT DATUM:  
 LOG MEAS. FROM: GROUND SURFACE  
 DRILLING MEAS. FROM:

DATE	9-28-2011	TYPE FLUID IN HOLE	MUD
RUN No	1	SALINITY	
TYPE LOG	CALIPER	DENSITY	
DEPTH-DRILLER	210	LEVEL	
DEPTH-LOGGER	210	MAX. REC. TEMP.	
BTM LOGGED INTERVAL		LOGGING SPEED (FT/MIN)	30
TOP LOGGED INTERVAL		TROLLING DIRECTION	UP
DRILLER	AWD	PUMPING RATE (GPM)	
RECORDED BY	RMB		
WITNESSED BY	JF		

BOREHOLE RECORD				CASING RECORD			
RUN NO.	BIT	FROM	TO	SIZE	WGT. STEEL	FROM	TO
1	7	3	210	8		0	3







NATURAL GAMMA

Depth

CALIPER

0 CPS 100

1ft:100ft

0 INCHES 20

---

**NOTES:**

While due care has been exercised in the performance of these measurements and observations, in accordance with methodologies utilized by the general practitioner, RMBAKER LLC can make no representations, warranties, or guarantees with respect to latent or concealed conditions that may exist, which may be beyond the detection capabilities of the methodologies used, or that may extend beyond the areas and depths surveyed.

The geophysical well logs show subsurface conditions as they existed at the dates and locations shown, and it is not warranted that they are representative of subsurface conditions at other locations and times.

If, at any time, different subsurface conditions from those observed are determined to be present, we must be advised and allowed to review and revise our observations if necessary.

Certificate of Authorization GB 458

**END OF LOG**

---



# RMBAKER LLC

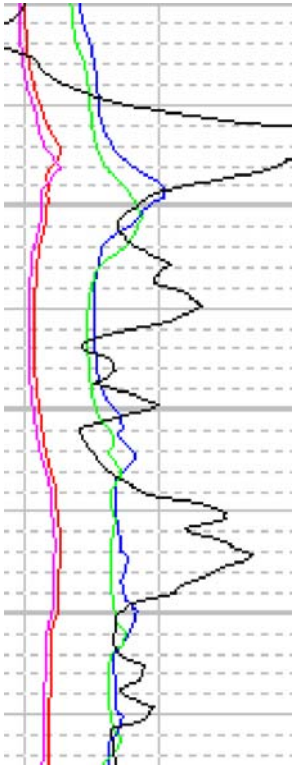
WELL ID: BR-23A  
LOG STAGE: PRELIMINARY

Geology and Geophysics

8600 Oldbridge Lane  
Orlando, FL 32819  
mobile ph 407-733-8958  
fax 407-370-4129

rob@rmbaker.com  
www.rmbaker.com

Licensed and Insured



CO: RMBAKER LLC  
WELL: BR-23A  
FLD:  
CTY: PALM BEACH GARD.  
STE: FLORIDA

COMPANY: RMBAKER LLC  
COLLAR/WELL ID: BR-23A  
FIELD:  
COUNTRY: USA  
STATE: FLORIDA

LOCATION:

NOTES:  
CASING IS TEMPORARY WITH 1.42 FT STICK-UP ABOVE GROUND SURF.

ALL SERVICES:  
CALIPER  
GAMMA  
DUAL INDUCTION  
ELECTRIC LOG

PERMANENT DATUM:

ELEVATION:

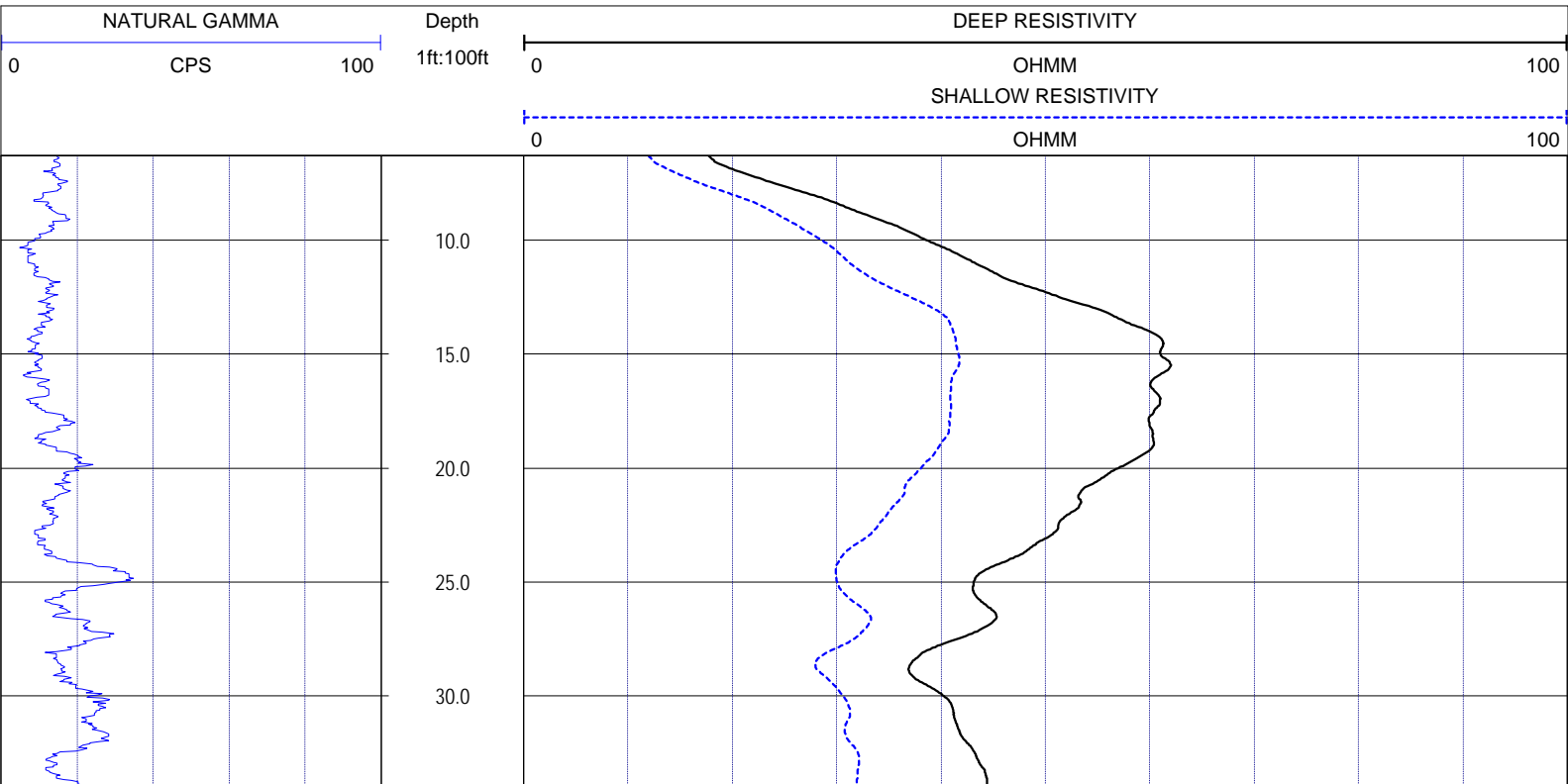
COORDINATES:

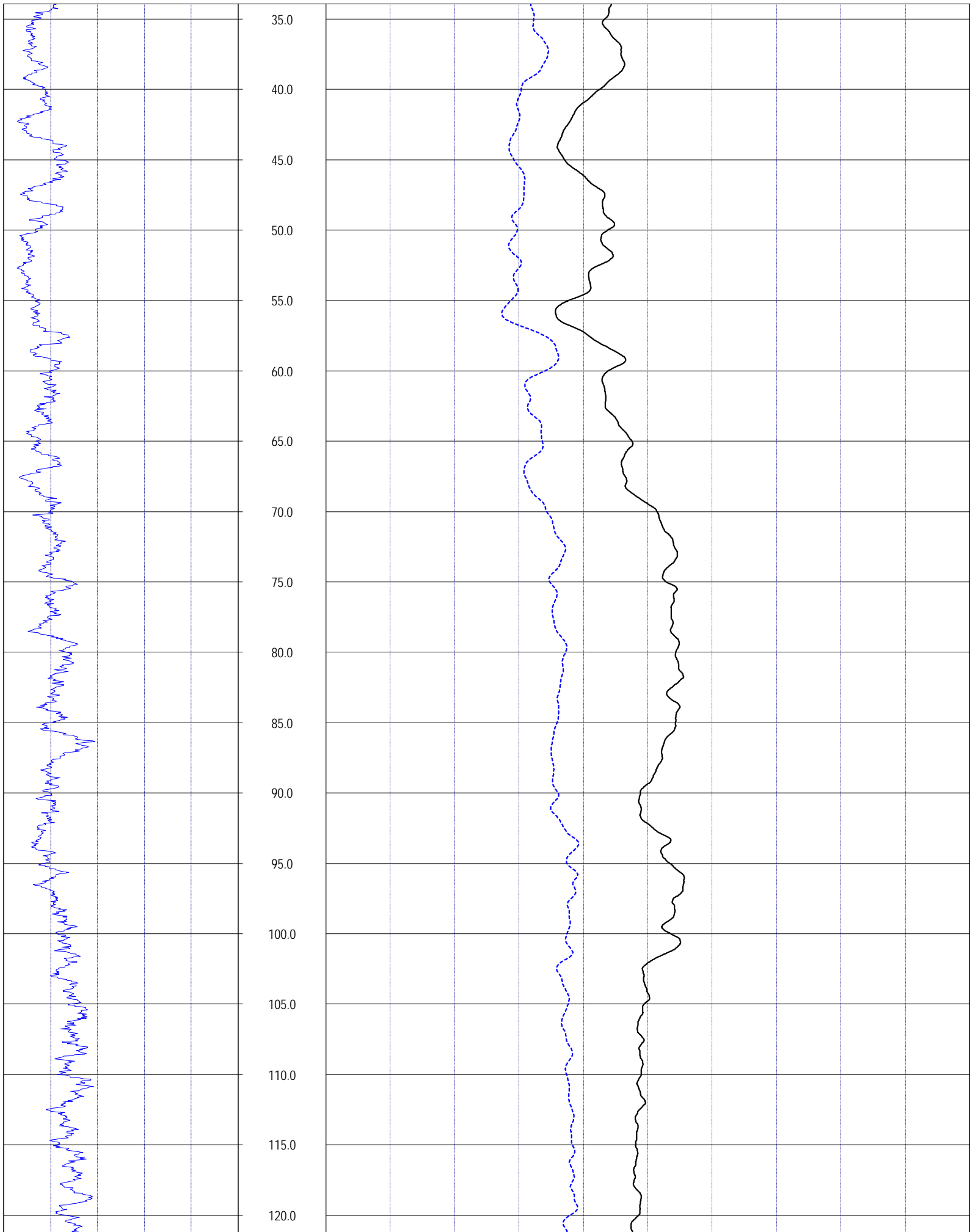
LOG MEAS. FROM: GROUND SURFACE

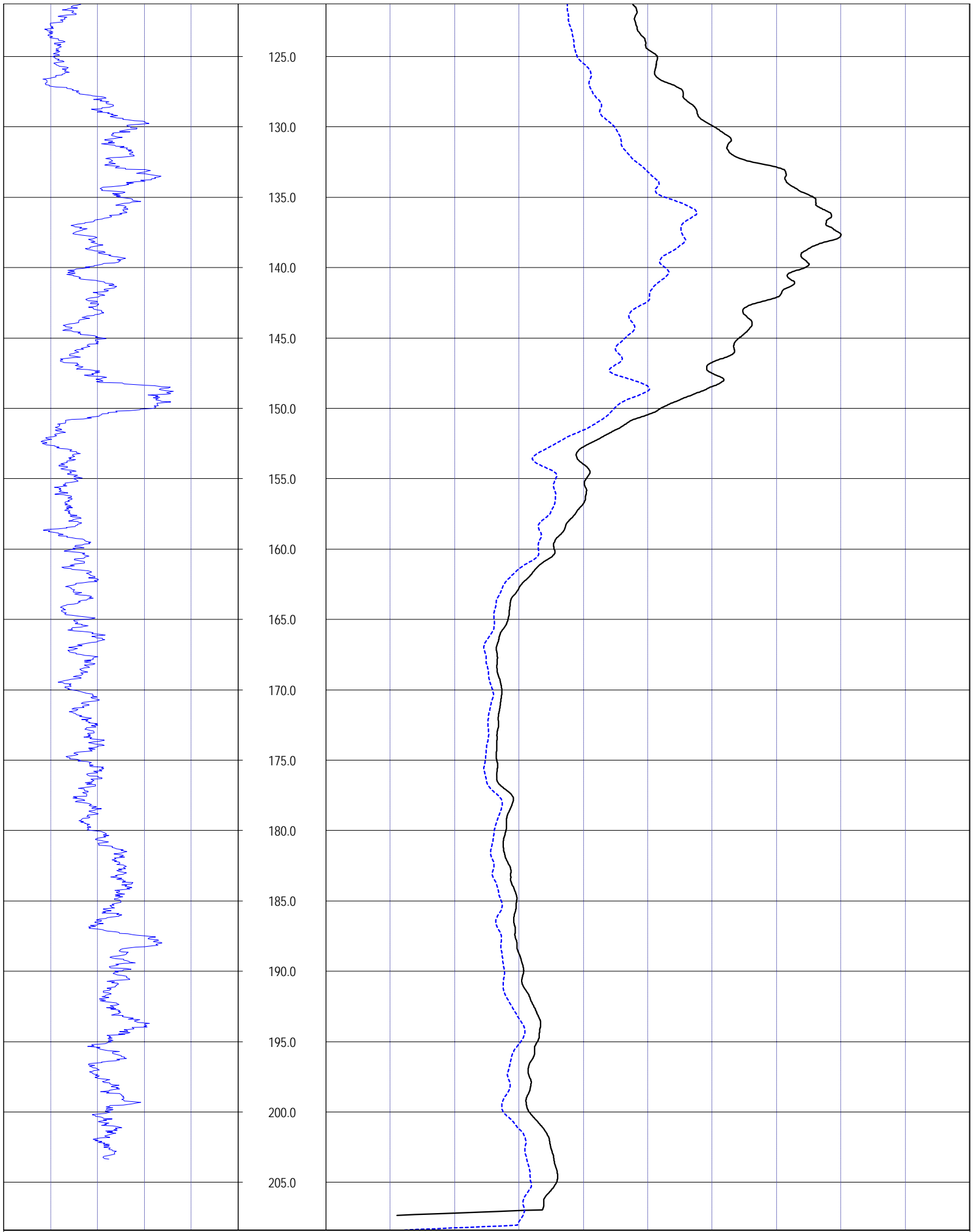
DRILLING MEAS. FROM:

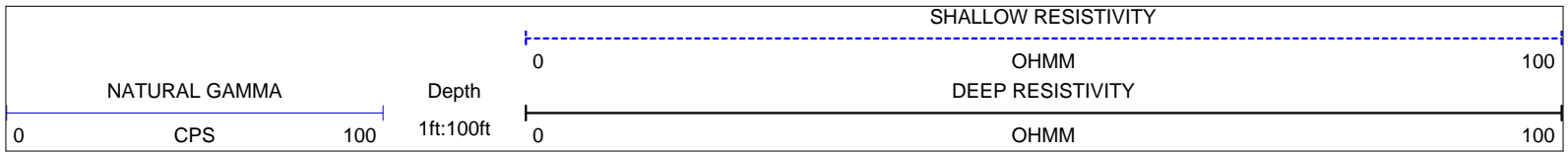
DATE	9-28-2011	TYPE FLUID IN HOLE	MUD
RUN No	1	SALINITY	
TYPE LOG	DUAL INDUCTION	DENSITY	
DEPTH-DRILLER	210	LEVEL	
DEPTH-LOGGER	210	MAX. REC. TEMP.	
BTM LOGGED INTERVAL		LOGGING SPEED (FT/MIN)	30
TOP LOGGED INTERVAL		TROLLING DIRECTION	UP
DRILLER	AWD	PUMPING RATE (GPM)	
RECORDED BY	RMB		
WITNESSED BY	JF		

BOREHOLE RECORD				CASING RECORD			
RUN NO.	BIT	FROM	TO	SIZE	WGT. STEEL	FROM	TO
1	7	3	210	8		0	3









**NOTES:**

While due care has been exercised in the performance of these measurements and observations, in accordance with methodologies utilized by the general practitioner, RIMBAKER LLC can make no representations, warranties, or guarantees with respect to latent or concealed conditions that may exist, which may be beyond the detection capabilities of the methodologies used, or that may extend beyond the areas and depths surveyed. The geophysical well logs show subsurface conditions as they existed at the dates and locations shown, and it is not warranted that they are representative of subsurface conditions at other locations and times. If, at any time, different subsurface conditions from those observed are determined to be present, we must be advised and allowed to review and revise our observations if necessary.

Certificate of Authorization GB 458

**END OF LOG**





# RMBAKER LLC

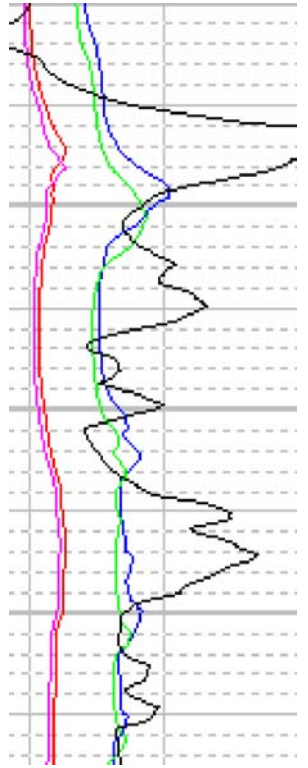
WELL ID: BR-23A  
LOG STAGE: PRELIMINARY

Geology and Geophysics

8600 Oldbridge Lane  
Orlando, FL 32819  
mobile ph 407-733-8958  
fax 407-370-4129

rob@rmbaker.com  
www.rmbaker.com

Licensed and Insured



CO: RMBAKER LLC  
WELL: BR-23A  
FLD:  
CTY: PALM BEACH GARD.  
STE: FLORIDA

COMPANY: RMBAKER LLC  
COLLAR/WELL ID: BR-23A  
FIELD:  
COUNTRY: USA

STATE: FLORIDA

LOCATION:

NOTES:  
CASING IS TEMPORARY WITH 1.42 FT STICK-UP ABOVE GROUND SURF.

ALL SERVICES:  
CALIPER  
GAMMA  
DUAL INDUCTION  
ELECTRIC LOG

PERMANENT DATUM:

ELEVATION:

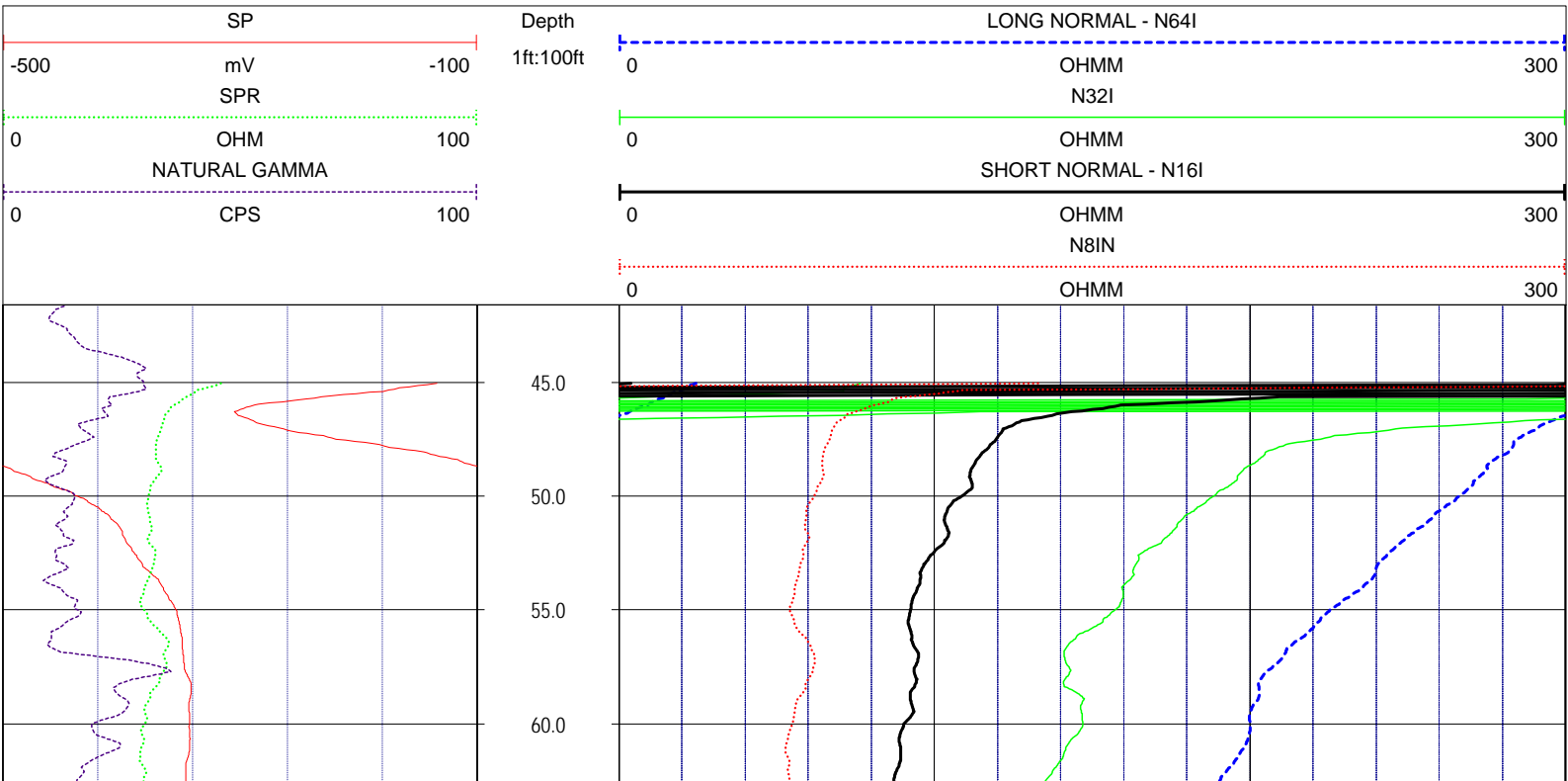
COORDINATES:

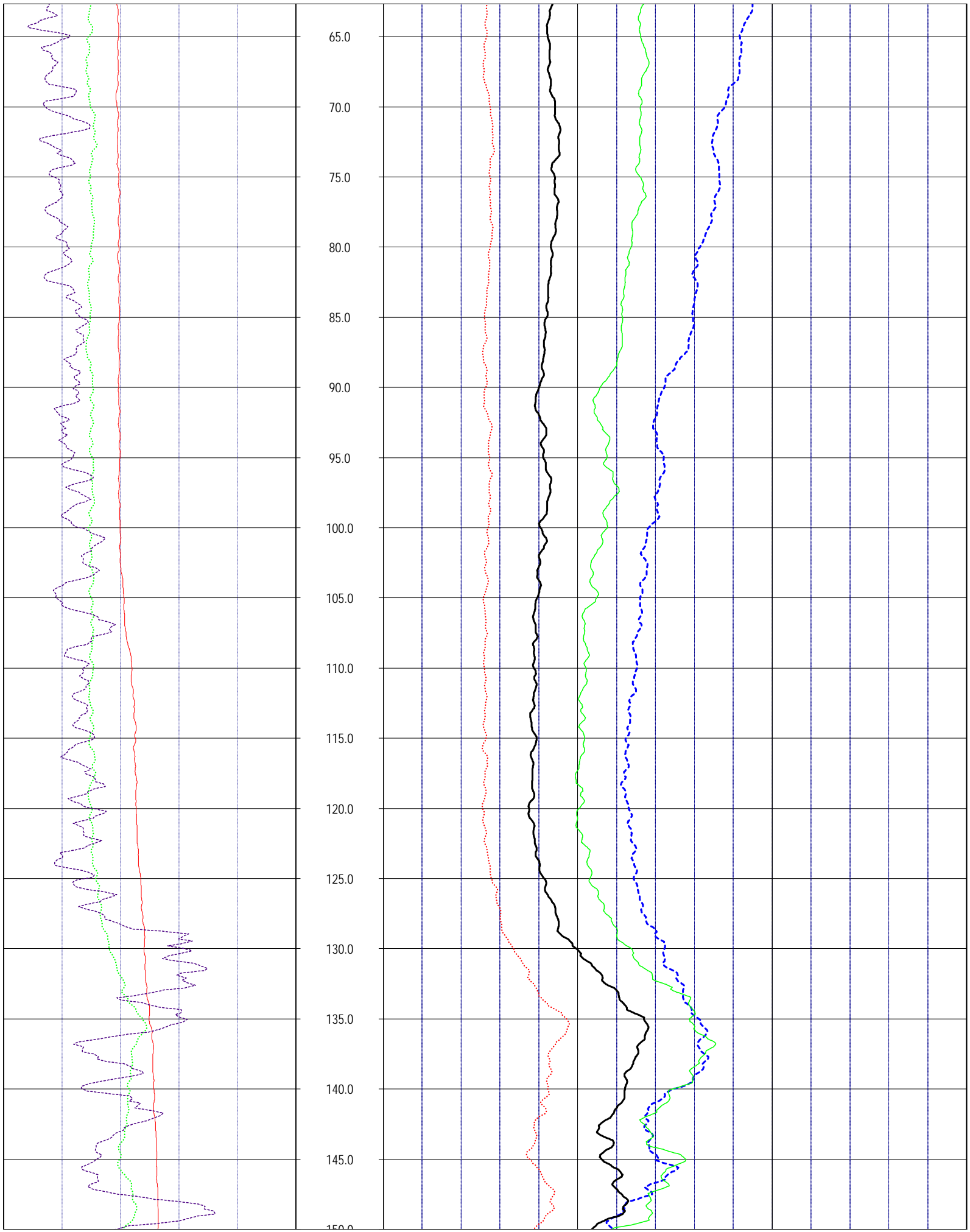
LOG MEAS. FROM: GROUND SURFACE

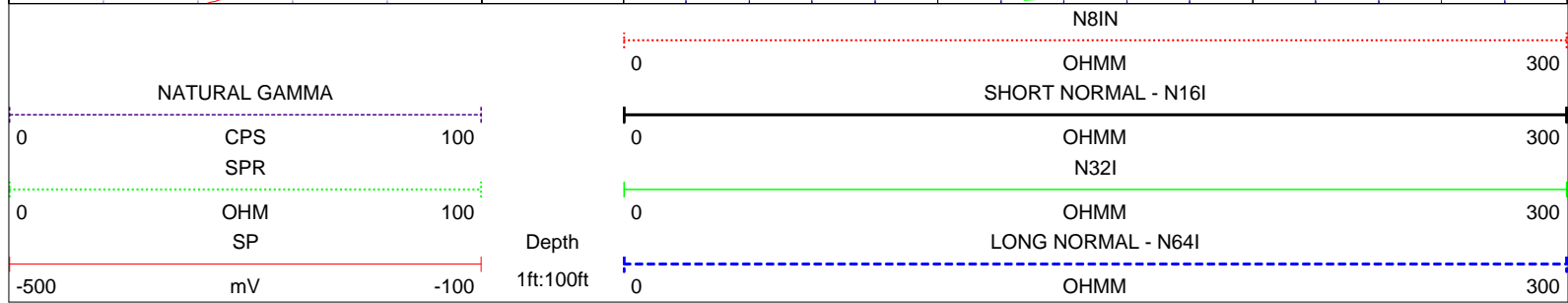
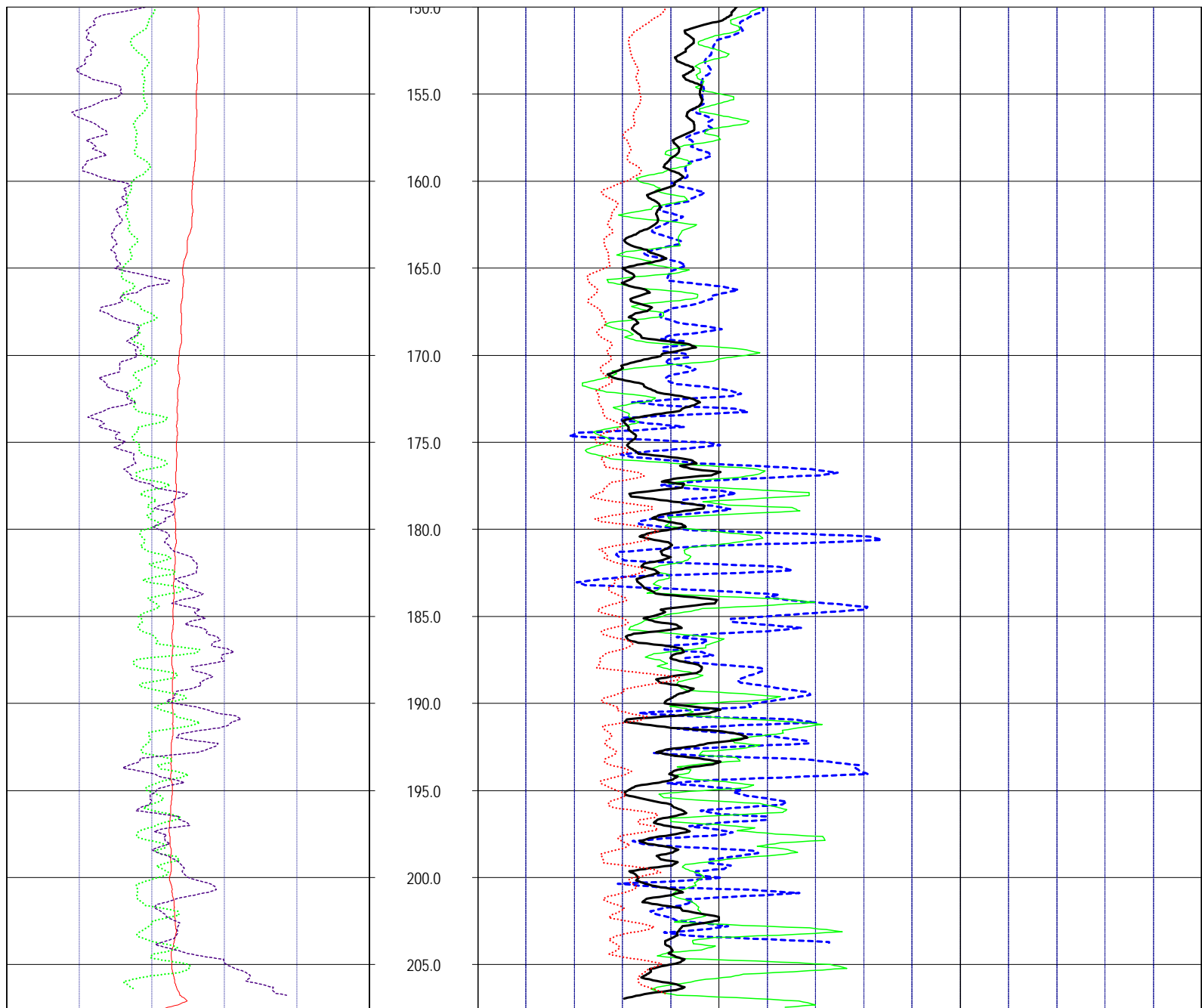
DRILLING MEAS. FROM:

DATE	9-28-2011	TYPE FLUID IN HOLE	MUD
RUN No	1	SALINITY	
TYPE LOG	ELECTRIC LOG	DENSITY	
DEPTH-DRILLER	210	LEVEL	
DEPTH-LOGGER	210	MAX. REC. TEMP.	
BTM LOGGED INTERVAL		LOGGING SPEED (FT/MIN)	30
TOP LOGGED INTERVAL		TROLLING DIRECTION	UP
DRILLER	AWD	PUMPING RATE (GPM)	
RECORDED BY	RMB		
WITNESSED BY	JF		

BOREHOLE RECORD				CASING RECORD			
RUN NO.	BIT	FROM	TO	SIZE	WGT. STEEL	FROM	TO
1	7	3	210	8		0	3







**NOTES:**

While due care has been exercised in the performance of these measurements and observations, in accordance with methodologies utilized by the general practitioner, RMBAKER LLC can make no representations, warranties, or guarantees with respect to latent or concealed conditions that may exist, which may be beyond the detection capabilities of the methodologies used, or that may extend beyond the areas and depths surveyed. The geophysical well logs show subsurface conditions as they existed at the dates and locations shown, and it is not warranted that they are representative of subsurface conditions at other locations and times. If, at any time, different subsurface conditions from those observed are determined to be present, we must be advised and allowed to review and revise our observations if necessary.

Certificate of Authorization GB 458

**END OF LOG**