



**RMBAKER**  
Geology and Geophysics

WELL C-1224  
UWI C-1224

8600 Oldbridge Lane  
Orlando, FL 32819  
mobile ph 407-733-8958

PROFESSIONAL LICENSES  
Geologist PG2186  
Licensed Geology Business

rob@rmbaker.com  
www.rmbaker.com

HEADER NOTES:

COMP SFWMD  
LOC SR 951  
FLD LOWER WEST COAST  
CNTY COLLIER  
STAT FL  
PROV FL  
CTRY USA

LATI 26.0681 X  
LONG -81.6947 Y  
GDAT NAD27 HDAT  
SEC ELEV  
TWP V DAT  
RGE  
ALL SERVICES:  
NATURAL GAMMA  
DUAL INDUCTION

PERMANENT DATUM:  
LOG MEASURED FROM: GROUND SURFACE - 2.33 FT BELOW TOC

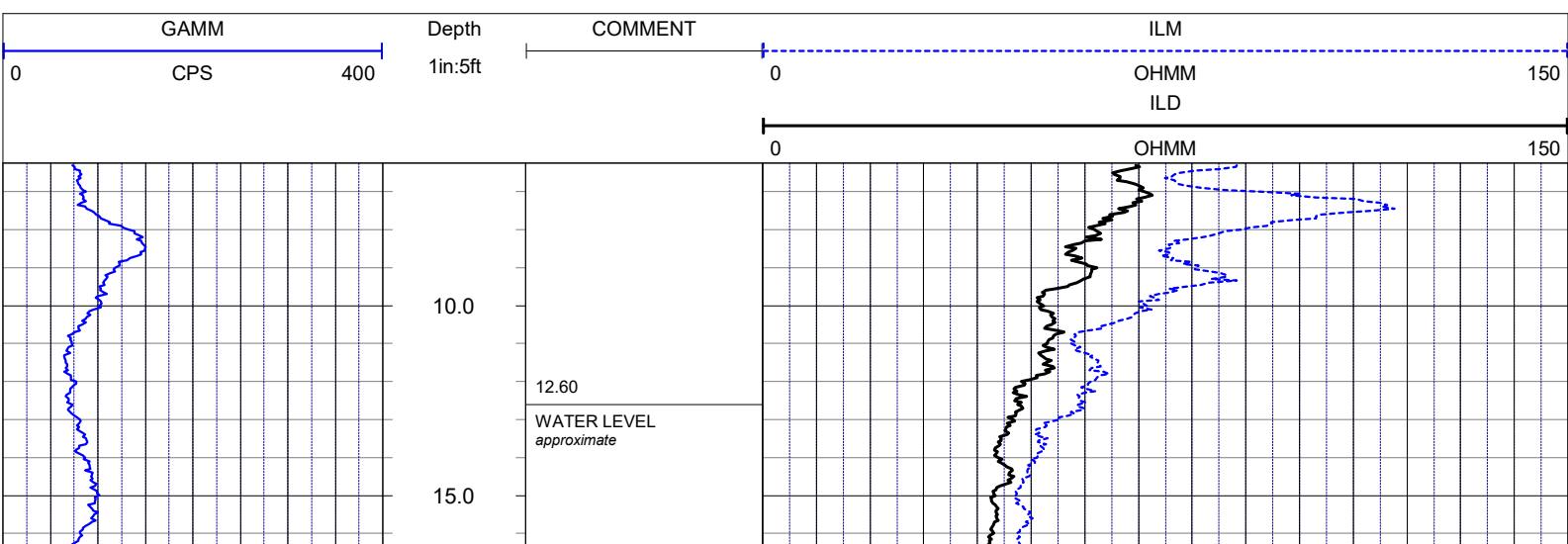
DRILLING MEASURED FROM:

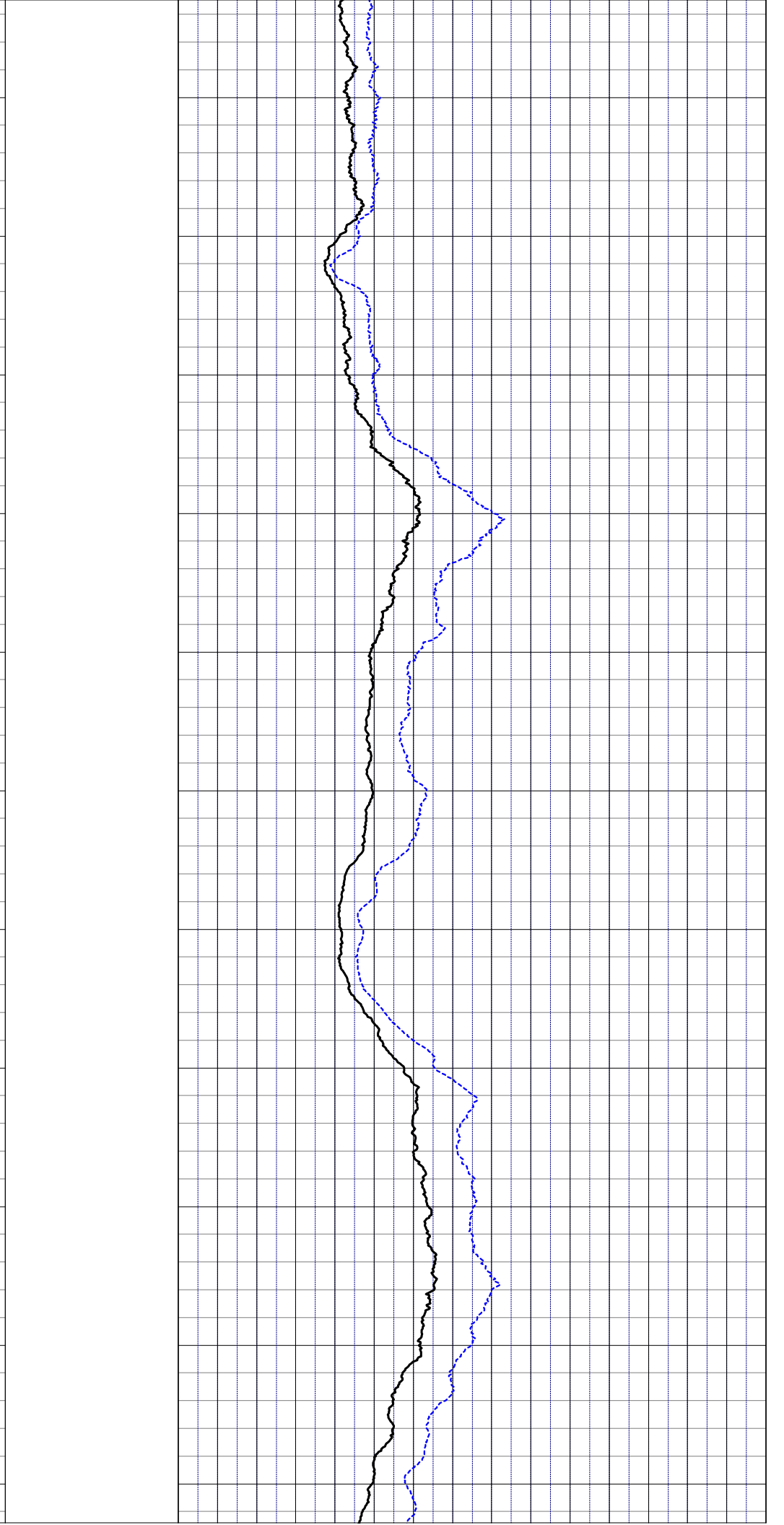
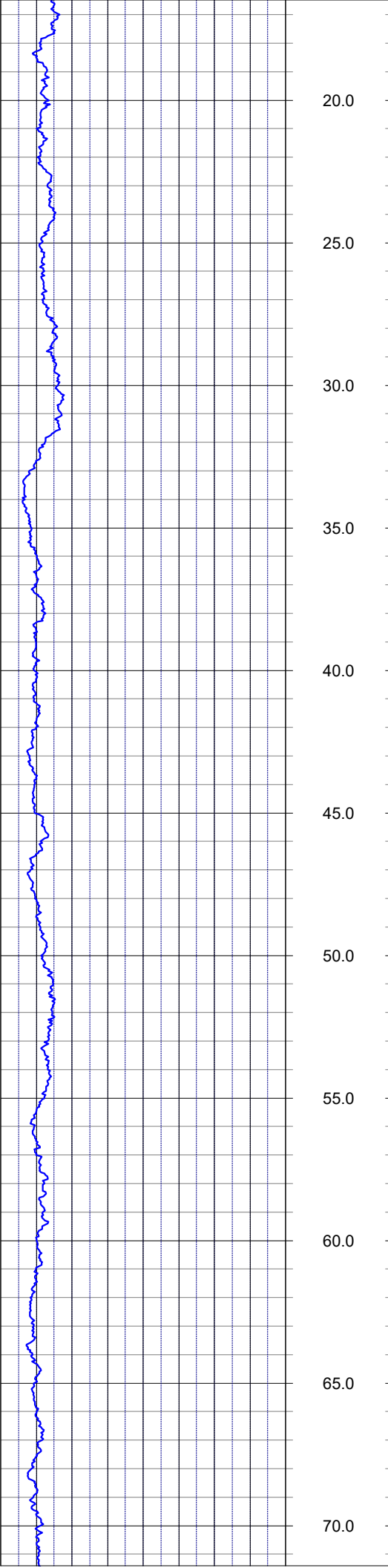
DATE	28 Apr 21	TYPE FLUID IN HOLE	WATER
RUN No	1	LOGGING SPEED (FT/MIN)	25
TYPE LOG	DUAL INDUCTION	TROLLING DIRECTION	UP
DEPTH-DRILLER	157	PUMPING RATE (GPM)	N/A
DEPTH-LOGGER	156.05		
DRILLER	N/A		
RECORDED BY	RMB		
SRVC	RMBAKER LLC	API	N/A
WITNESSED BY	SFWMD	LIC	N/A

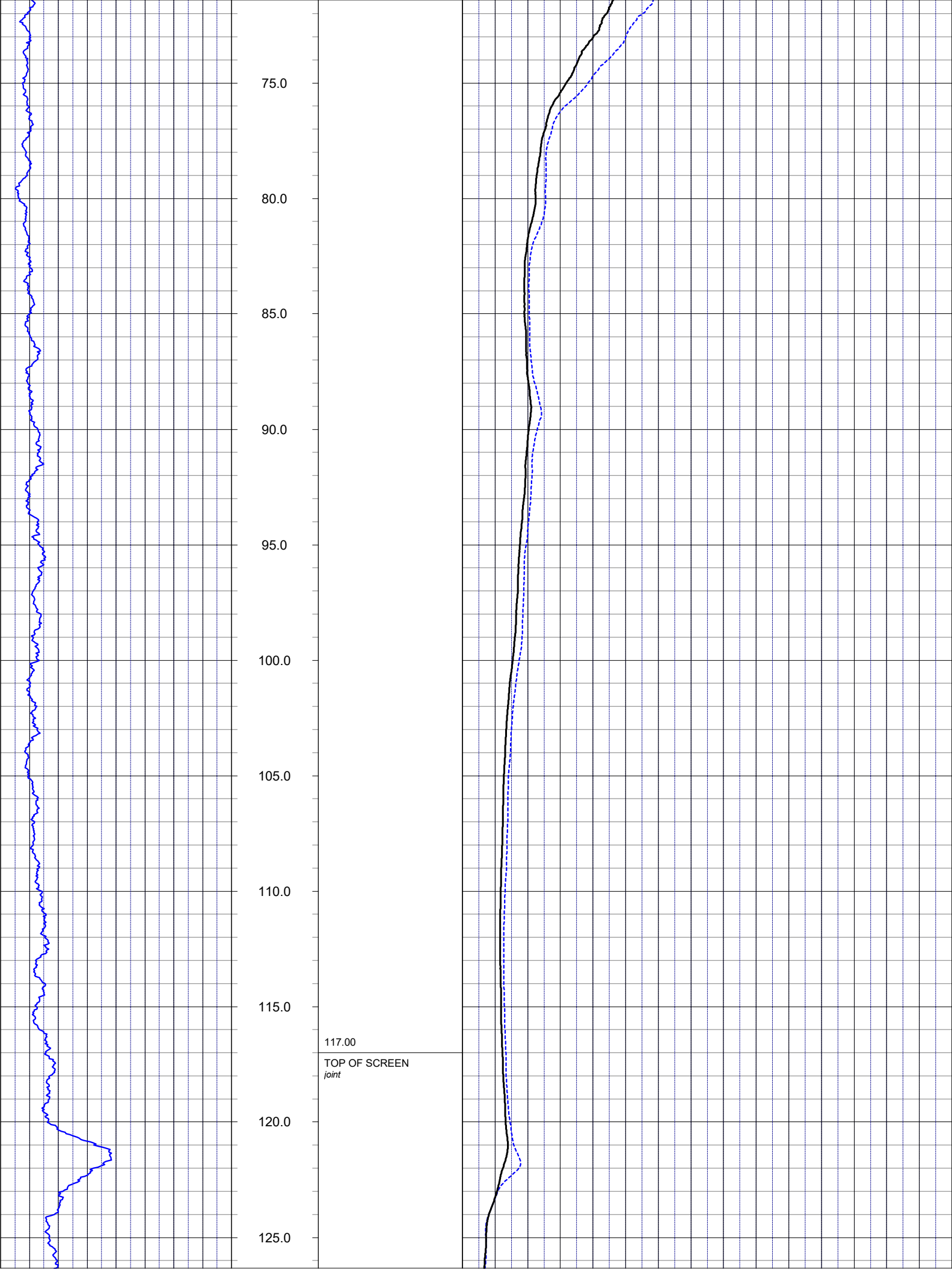
BOREHOLE RECORD		CASING RECORD				
RUN NO.	BIT FROM	TO	SIZE	MAT.	FROM	TO
1			2	PVC	0	156.05

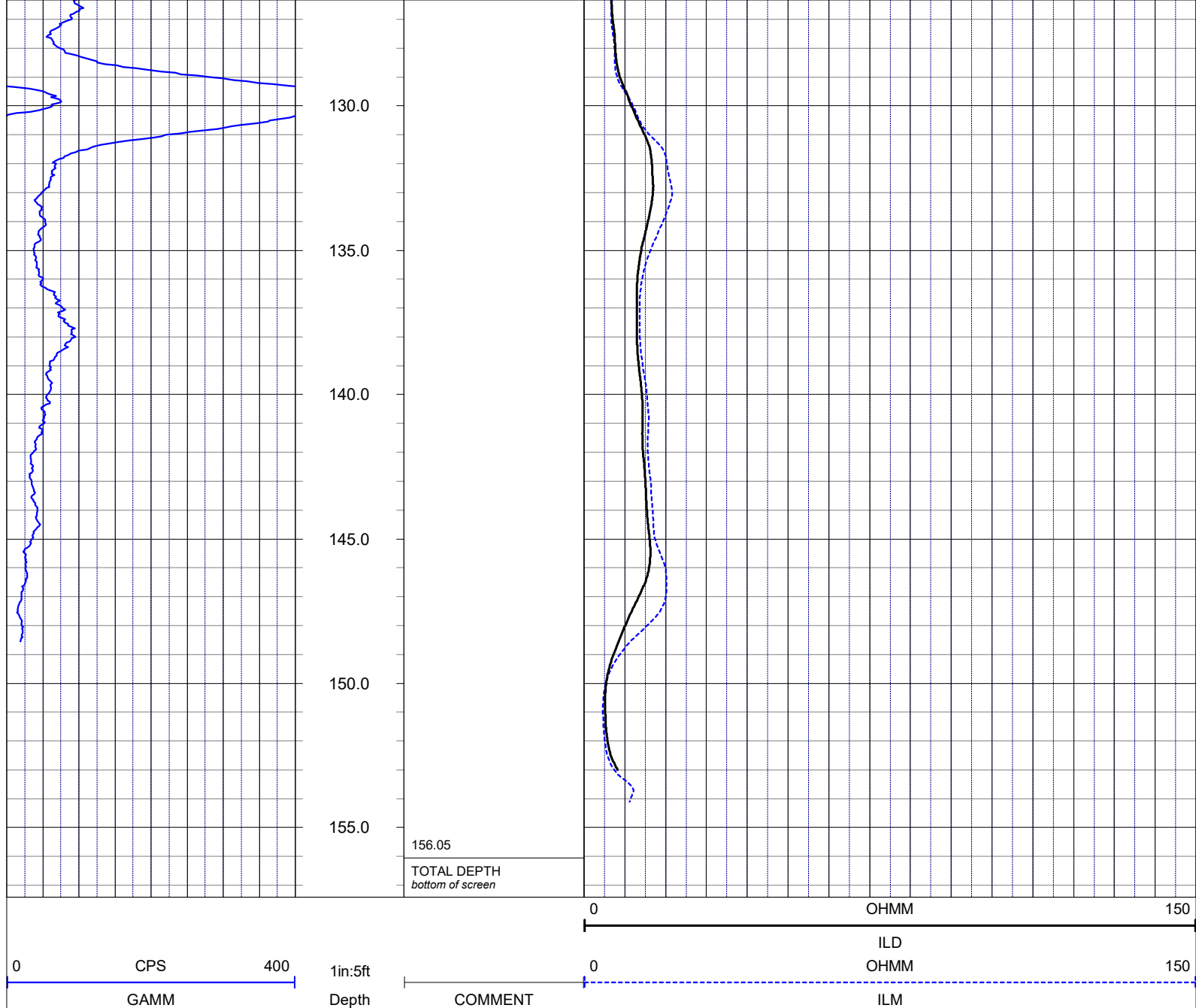
LOG CODES

3-arm caliper	CAL	long normal resistivity	RLN	deep induction conductivity	IDC
natural gamma (CPS)	GAMM	8 inch resistivity	R8	shallow induction conductivity	ISC
spontaneous potential	ESP	32 inch resistivity	R32	sonic interval velocity	DT
single point resistance	RES	deep induction resistivity	ILD	sonic porosity (RHG method)	SPHI
short normal resistivity	RSN	shallow induction resistivity	ILM	repeat designation	R









**NOTES:**

While due care has been exercised in the performance of these measurements and observations, in accordance with methodologies utilized by the general practitioner, RMLBAKER LLC can make no representations, warranties, or guarantees with respect to latent or concealed conditions that may exist, which may be beyond the detection capabilities of the methodologies used, or that may extend beyond the areas and depths surveyed.

The geophysical well logs show subsurface conditions as they existed at the dates and locations shown, and it is not warranted that they are representative of subsurface conditions at other locations and times. If, at any time, different subsurface conditions from those observed are determined to be present, we must be advised and allowed to review and revise our observations if necessary.

Florida Geology Business Licenced by PG2186

**END OF LOG**