



RMBAKER LLC

WELL C43PZ201B
UWI C43PZ201B

Geology and Geophysics

8600 Oldbridge Lane
Orlando, FL 32819
mobile ph 407-733-8958

LOG STAGE EXPLORATORY

rob@rmbaker.com

www.rmbaker.com

HEADER NOTES:

COMP SFWMD
 LOC C-43 RESERVOIR PERIMETER PIEZOMETERS
 FLD C-43 RESERVOIR
 CNTY HENDRY
 STAT FL
 PROV FL
 CTRY USA

LATI X
 LONG Y
 GDAT WGS84 HDAT
 SEC ELEV
 TWP VDAT
 RGE
 ALL SERVICES:
 DUAL INDUCTION
 NATURAL GAMMA

PERMANENT DATUM:

LOG MEASURED FROM: GROUND SURFACE

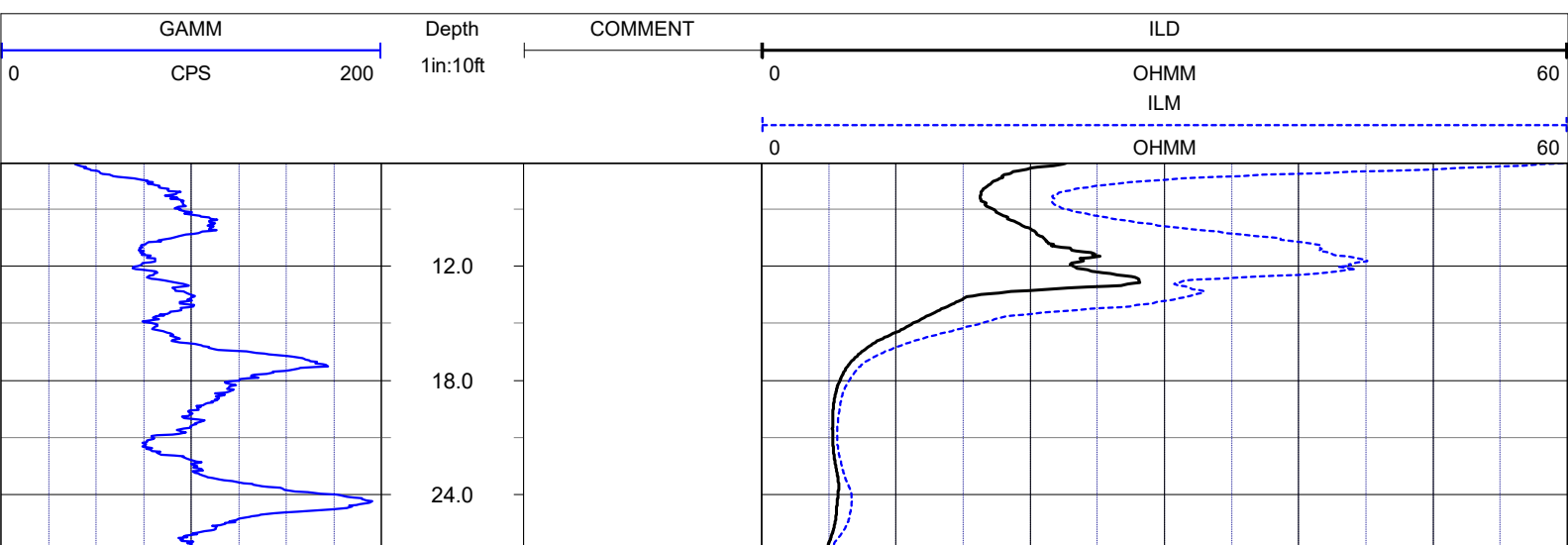
DRILLING MEASURED FROM:

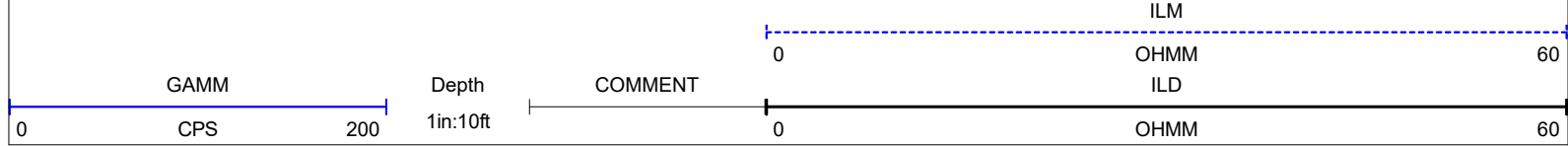
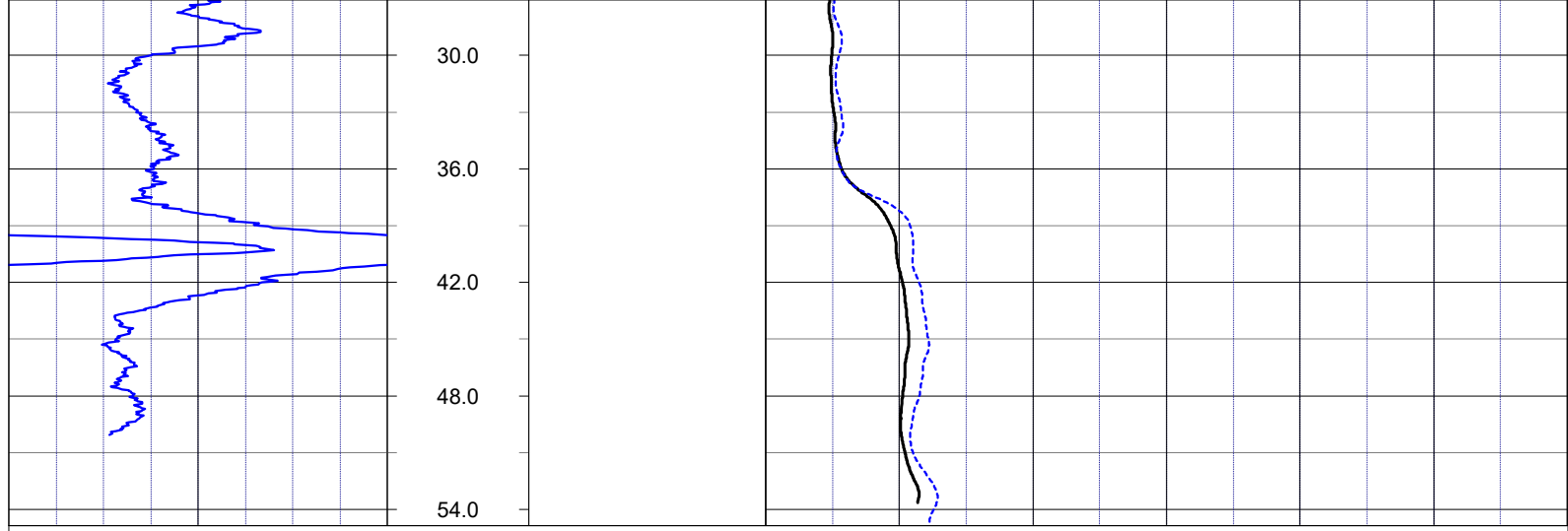
DATE	28 Mar 18	TYPE FLUID IN HOLE	WATER
RUN No	1	LOGGING SPEED (FT/MIN)	25
TYPE LOG	DUAL INDUCTION	TROLLING DIRECTION	UP
DEPTH-DRILLER	60	PUMPING RATE (GPM)	N/A
DEPTH-LOGGER	56.95		
DRILLER	N/A		
RECORDED BY	RMB		
SRVC	RMBAKER LLC	API	N/A
WITNESSED BY	K. SMITH	LIC	N/A

BOREHOLE RECORD		CASING RECORD				
RUN NO.	BIT FROM	TO	SIZE	MAT.	FROM	TO
1			2	PVC	0	60

LOG CODES

3-arm caliper	CAL	long normal resistivity	RLN	deep induction conductivity	IDC
natural gamma (CPS)	GAMM	8 inch resistivity	R8	shallow induction conductivity	ISC
spontaneous potential	ESP	32 inch resistivity	R32	sonic interval velocity	DT
single point resistance	RES	deep induction resistivity	ILD	sonic porosity (RHG method)	SPHI
short normal resistivity	RSN	shallow induction resistivity	ILM	repeat designation	R





NOTES:
 While due care has been exercised in the performance of these measurements and observations, in accordance with methodologies utilized by the general practitioner, RMBAKER LLC can make no representations, warranties, or guarantees with respect to latent or concealed conditions that may exist, which may be beyond the detection capabilities of the methodologies used, or that may extend beyond the areas and depths surveyed.
 The geophysical well logs show subsurface conditions as they existed at the dates and locations shown, and it is not warranted that they are representative of subsurface conditions at other locations and times.
 If, at any time, different subsurface conditions from those observed are determined to be present, we must be advised and allowed to review and revise our observations if necessary.

Florida Licensed Geology Business GB 458

END OF LOG