



RMBAKER LLC

WELL C43PZ209B
UWI C43PZ209B

Geology and Geophysics

8600 Oldbridge Lane
Orlando, FL 32819
mobile ph 407-733-8958

LOG STAGE EXPLORATORY

rob@rmbaker.com
www.rmbaker.com

HEADER NOTES:

COMP SFWMD
LOC C-43 RESERVOIR PERIMETER PIEZOMETERS
FLD C-43 RESERVOIR
CNTY HENDRY
STAT FL
PROV FL
CTRY USA

LATI X
LONG Y
GDAT WGS84
SEC HDAT
TWP ELEV
RGE VDAT

ALL SERVICES:
DUAL INDUCTION
NATURAL GAMMA

PERMANENT DATUM:

LOG MEASURED FROM: GROUND SURFACE

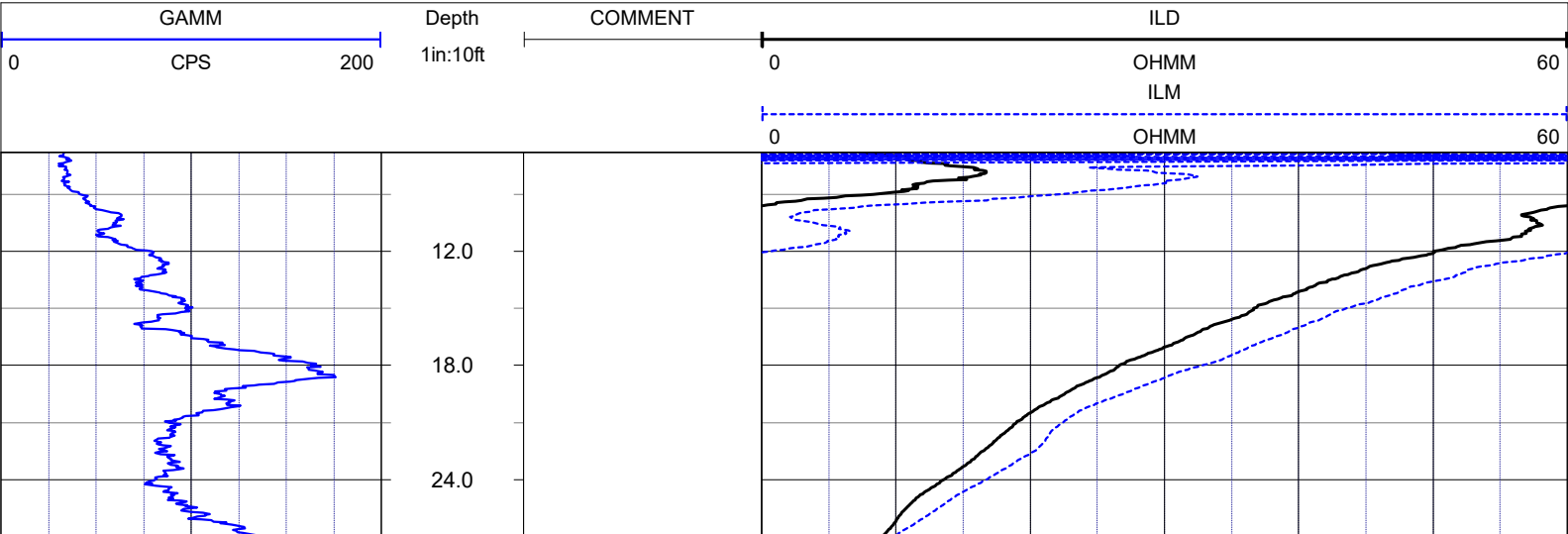
DRILLING MEASURED FROM:

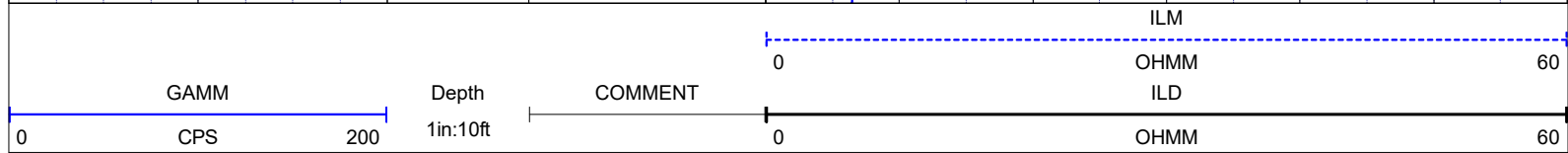
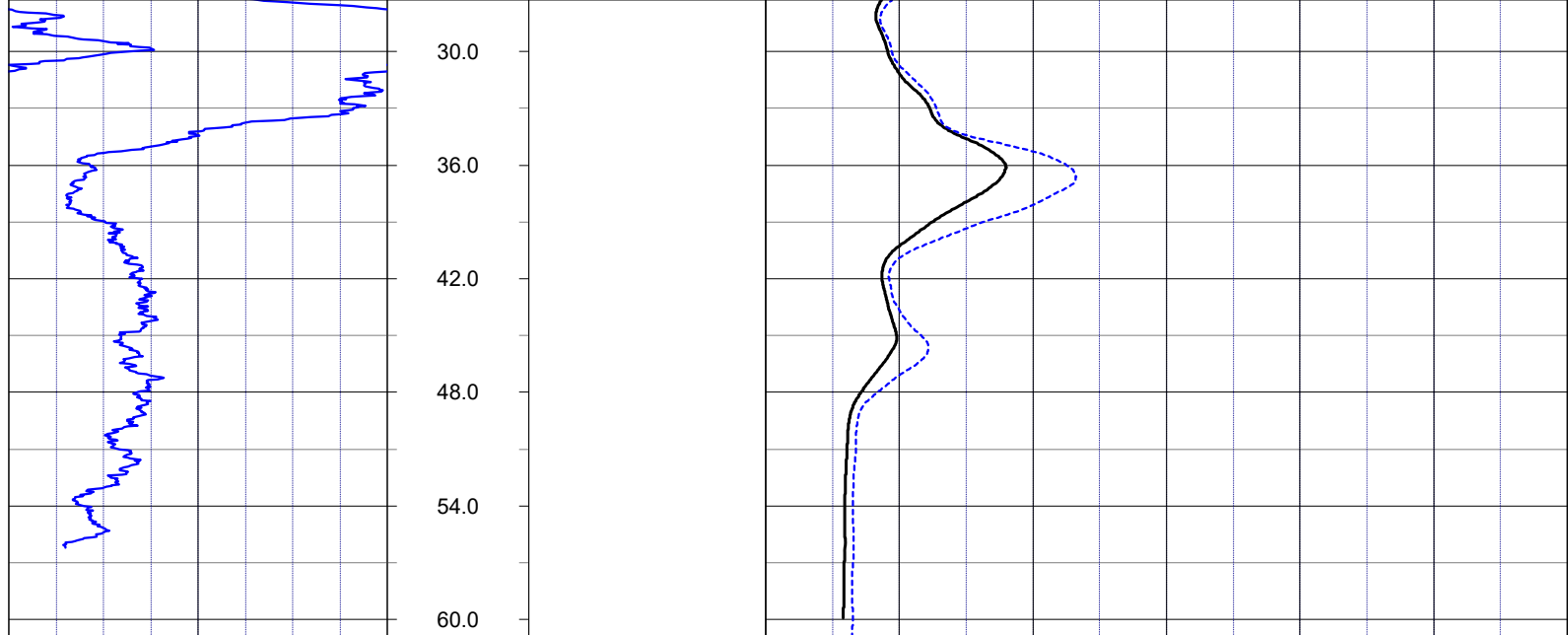
| | | | |
|---------------|----------------|------------------------|-------|
| DATE | 29 Mar 18 | TYPE FLUID IN HOLE | WATER |
| RUN No | 1 | LOGGING SPEED (FT/MIN) | 25 |
| TYPE LOG | DUAL INDUCTION | TROLLING DIRECTION | UP |
| DEPTH-DRILLER | 60 | PUMPING RATE (GPM) | N/A |
| DEPTH-LOGGER | 63.05 | | |
| DRILLER | N/A | | |
| RECORDED BY | RMB | | |
| SRVC | RMBAKER LLC | API | N/A |
| WITNESSED BY | K. SMITH | LIC | N/A |

| BOREHOLE RECORD | | CASING RECORD | | | | |
|-----------------|----------|---------------|------|------|------|----|
| RUN NO. | BIT FROM | TO | SIZE | MAT. | FROM | TO |
| 1 | | | 2 | PVC | 0 | 60 |
| | | | | | | |
| | | | | | | |
| | | | | | | |
| | | | | | | |
| | | | | | | |
| | | | | | | |
| | | | | | | |
| | | | | | | |
| | | | | | | |

LOG CODES

| | | | | | |
|--------------------------|------|-------------------------------|-----|--------------------------------|------|
| 3-arm caliper | CAL | long normal resistivity | RLN | deep induction conductivity | IDC |
| natural gamma (CPS) | GAMM | 8 inch resistivity | R8 | shallow induction conductivity | ISC |
| spontaneous potential | ESP | 32 inch resistivity | R32 | sonic interval velocity | DT |
| single point resistance | RES | deep induction resistivity | ILD | sonic porosity (RHG method) | SPHI |
| short normal resistivity | RSN | shallow induction resistivity | ILM | repeat designation | R |





NOTES:

While due care has been exercised in the performance of these measurements and observations, in accordance with methodologies utilized by the general practitioner, RMBAKER LLC can make no representations, warranties, or guarantees with respect to latent or concealed conditions that may exist, which may be beyond the detection capabilities of the methodologies used, or that may extend beyond the areas and depths surveyed. The geophysical well logs show subsurface conditions as they existed at the dates and locations shown, and it is not warranted that they are representative of subsurface conditions at other locations and times. If, at any time, different subsurface conditions from those observed are determined to be present, we must be advised and allowed to review and revise our observations if necessary.

Florida Licensed Geology Business GB 458

END OF LOG