



RMBAKER LLC

WELL CH-324
UWI CH-324

Geology and Geophysics

8600 Oldbridge Lane
Orlando, FL 32819
mobile ph 407-733-8958

LOG STAGE EXPLORATORY

rob@rmbaker.com
www.rmbaker.com

HEADER NOTES:
SCREENED FROM 180 FT TO 191 FT

COMP RMBAKER LLC
LOC CHARLOTTE COUNTY
FLD CHARLOTTE COUNTY
CNTY CHARLOTTE COUNTY
STAT FL
PROV FL
CTRY USA

LATI 26.798770 X
LONG -81.769100 Y
GDAT WGS84 HDAT
SEC ELEV
TWP V DAT
RGE

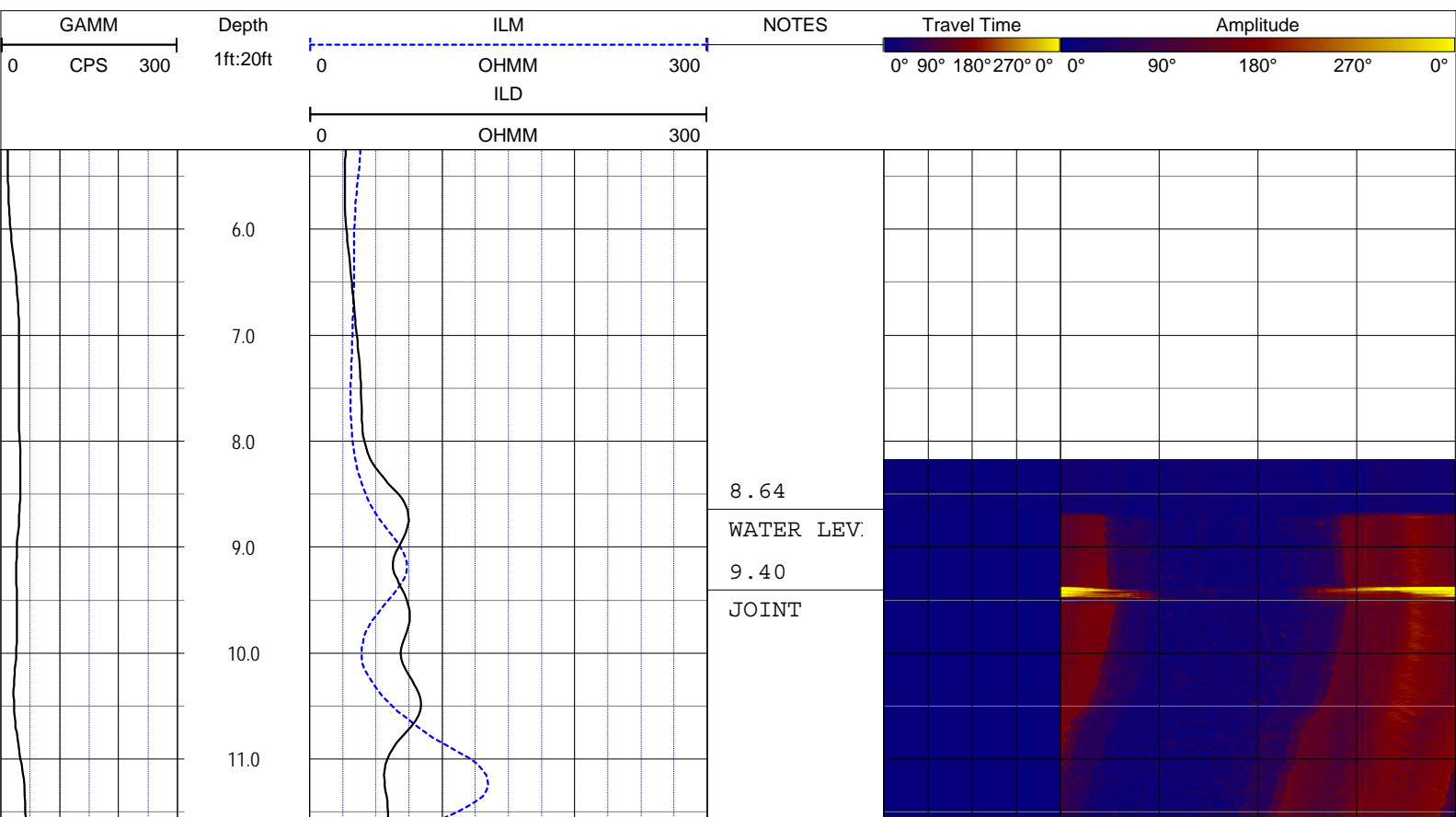
ALL SERVICES:
DUAL INDUCTION
NATURAL GAMMA
ACOUSTIC TELEVIEWER
VIDEO

PERMANENT DATUM:
LOG MEASURED FROM: GROUND SURFACE

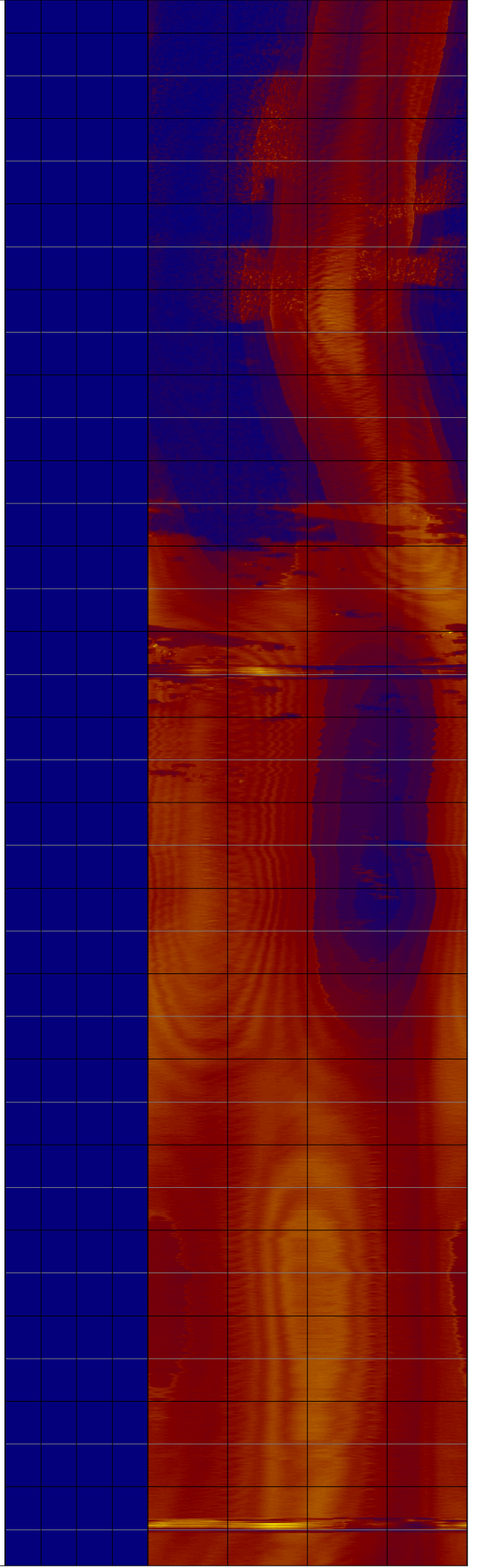
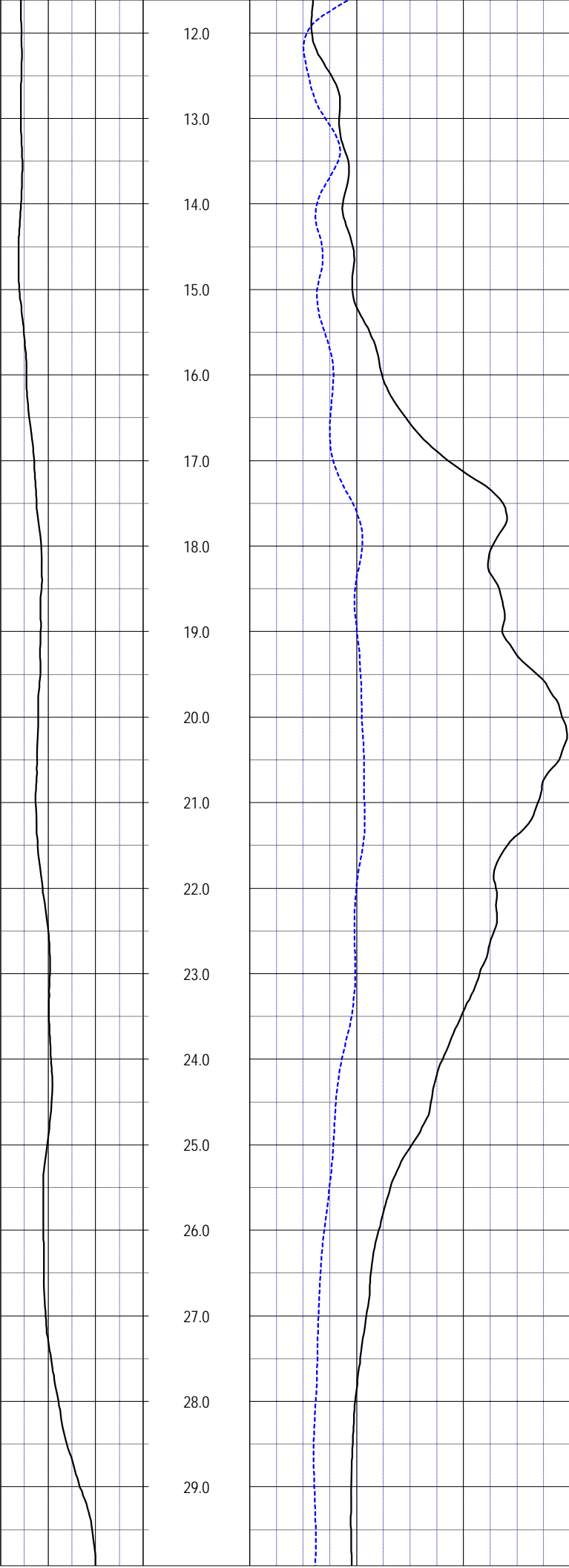
DRILLING MEASURED FROM:

DATE	16 Jul 14	TYPE FLUID IN HOLE	WATER
RUN No	1	LOGGING SPEED (FT/MIN)	20
TYPE LOG	COMPOSITE	TROLLING DIRECTION	UP
DEPTH-DRILLER		PUMPING RATE (GPM)	
DEPTH-LOGGER			
DRILLER			
RECORDED BY	RMB		
SRVC	RMBAKER LLC	API	N/A
WITNESSED BY	K. SMITH	LIC	N/A

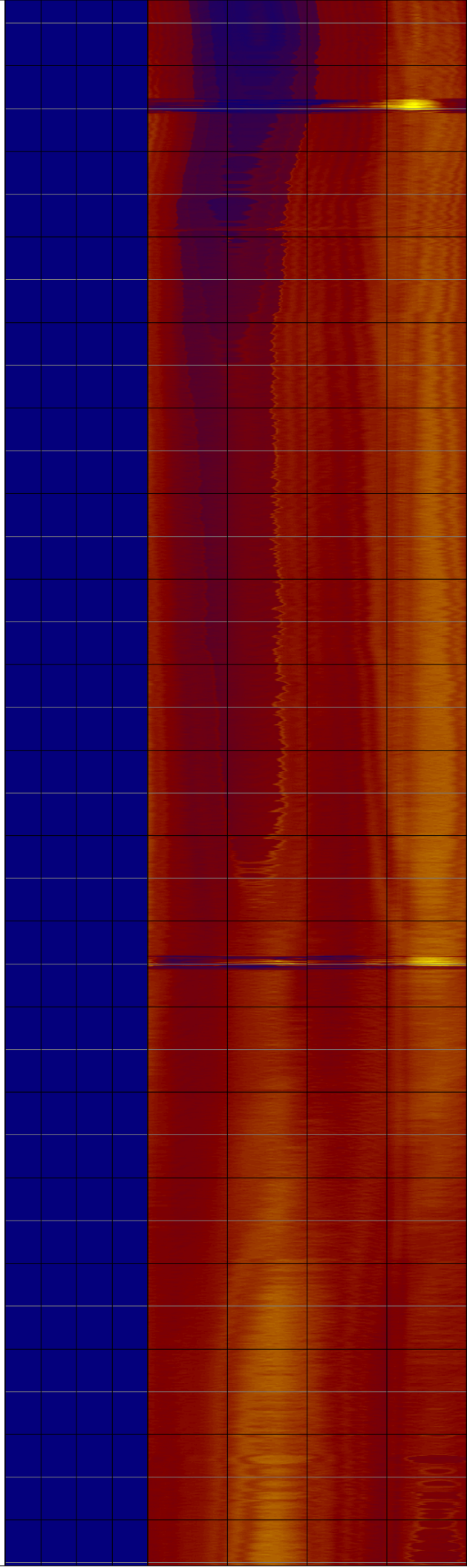
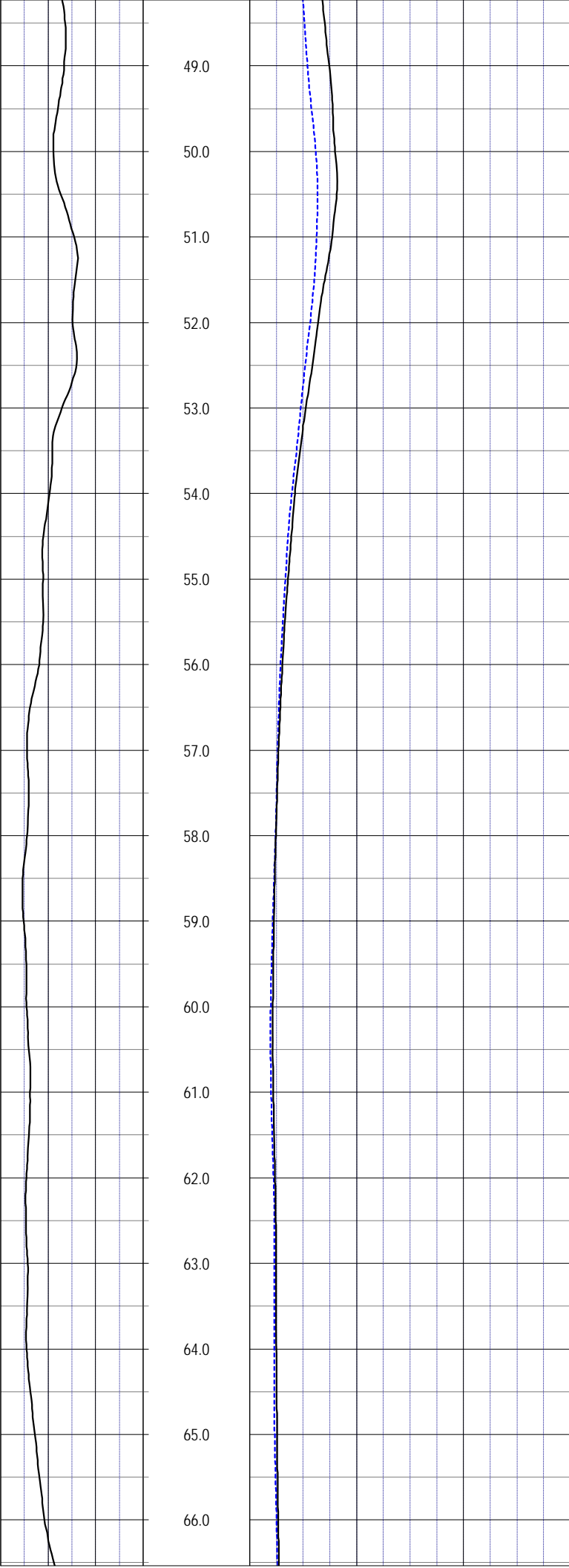
BOREHOLE RECORD				CASING RECORD			
RUN NO.	BIT	FROM	TO	SIZE	MAT.	FROM	TO
				2	PVC	0	191.4



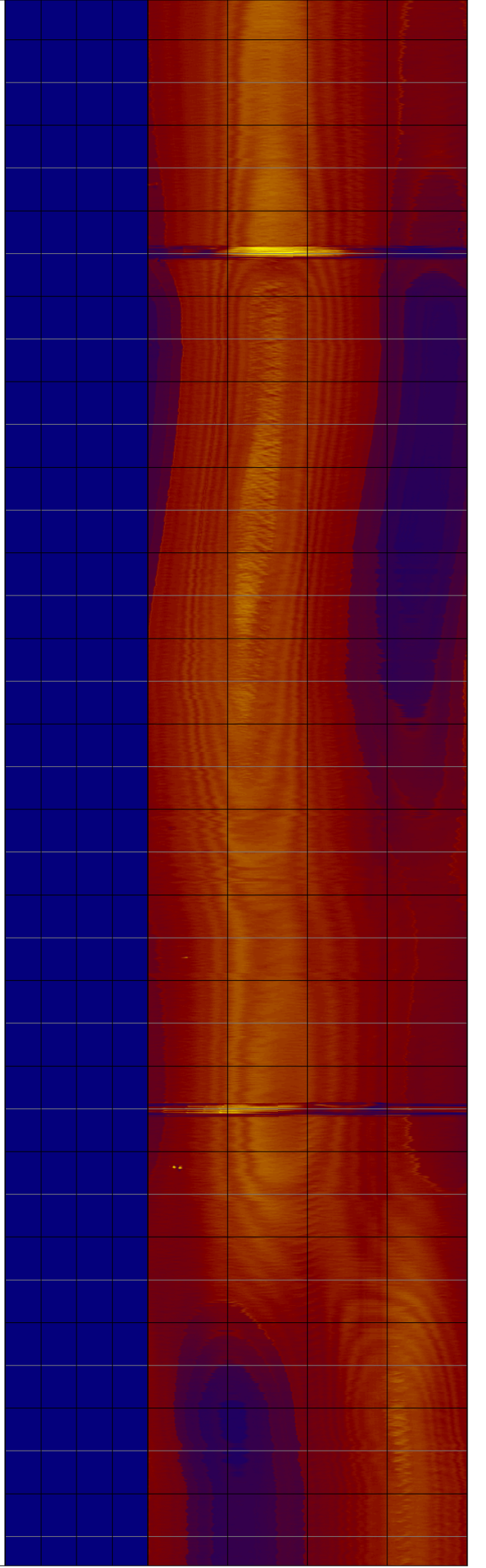
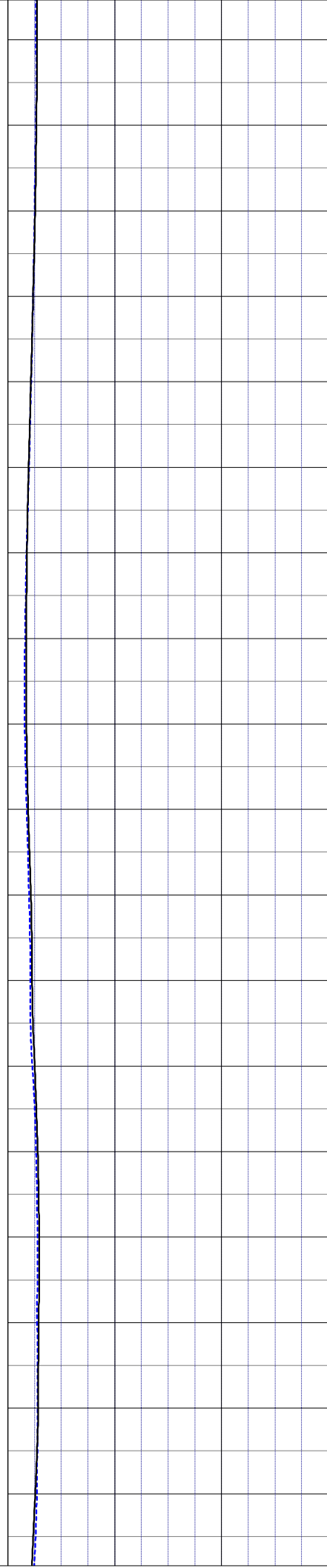
12.0
13.0
14.0
15.0
16.0
17.0
18.0
19.0
20.0
21.0
22.0
23.0
24.0
25.0
26.0
27.0
28.0
29.0

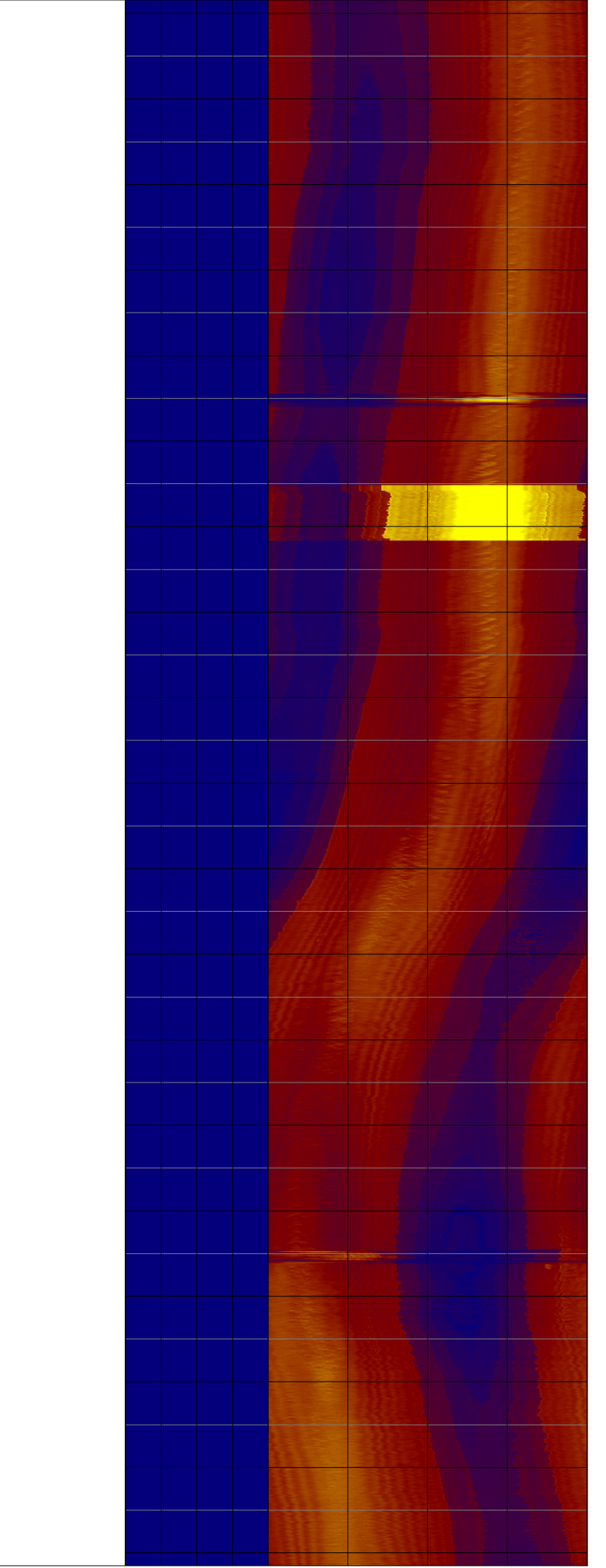
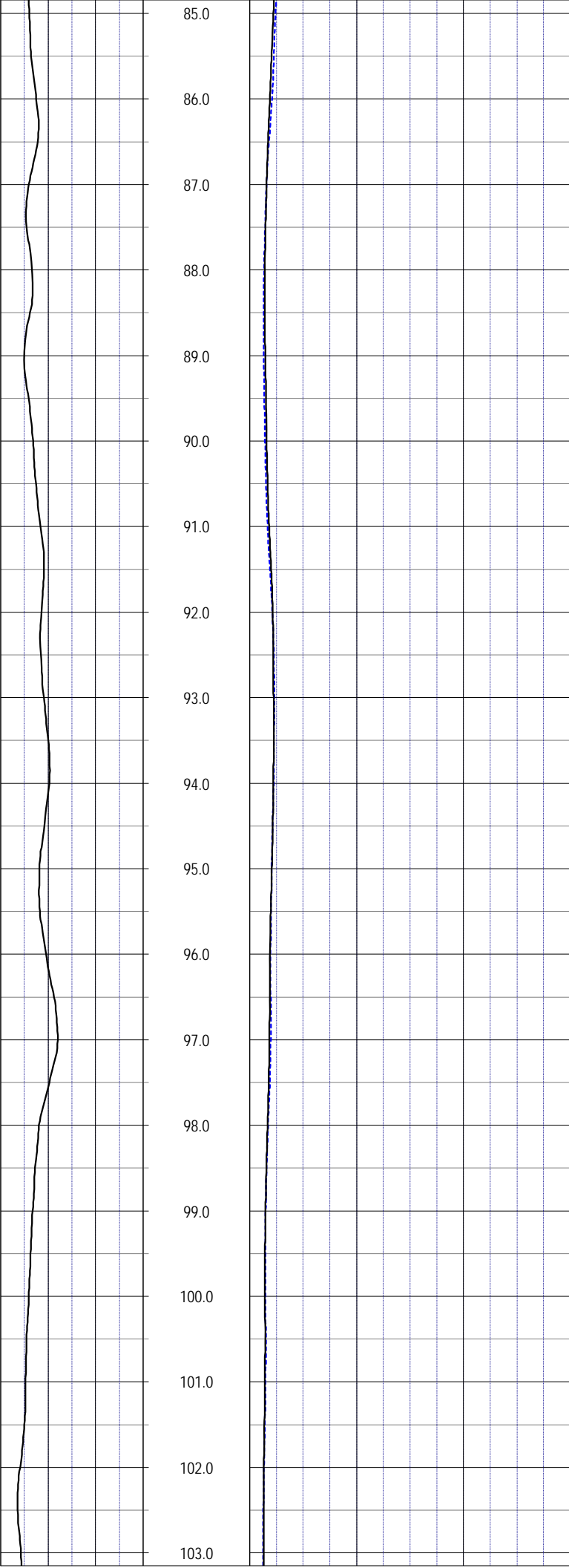


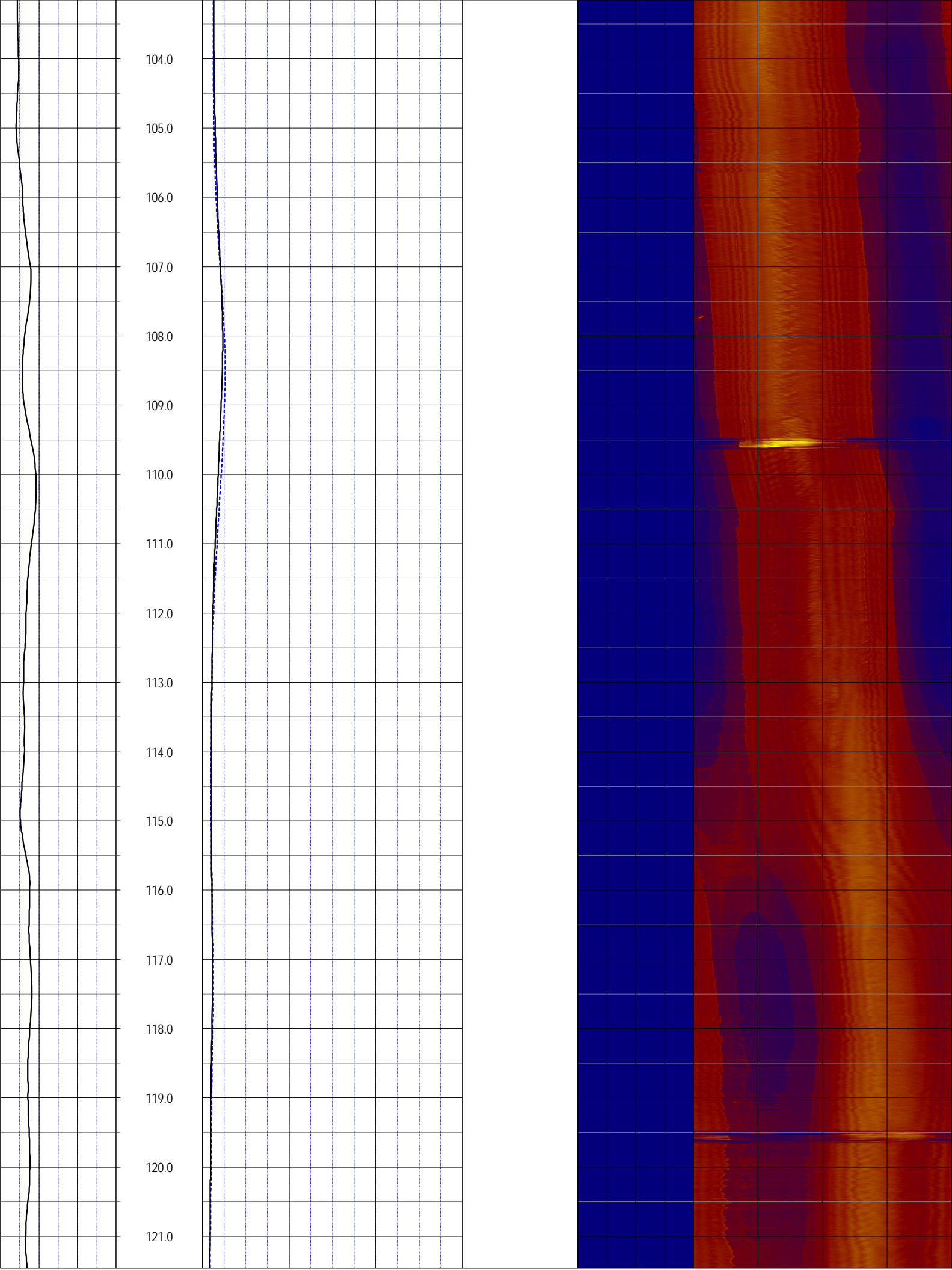
49.0
50.0
51.0
52.0
53.0
54.0
55.0
56.0
57.0
58.0
59.0
60.0
61.0
62.0
63.0
64.0
65.0
66.0

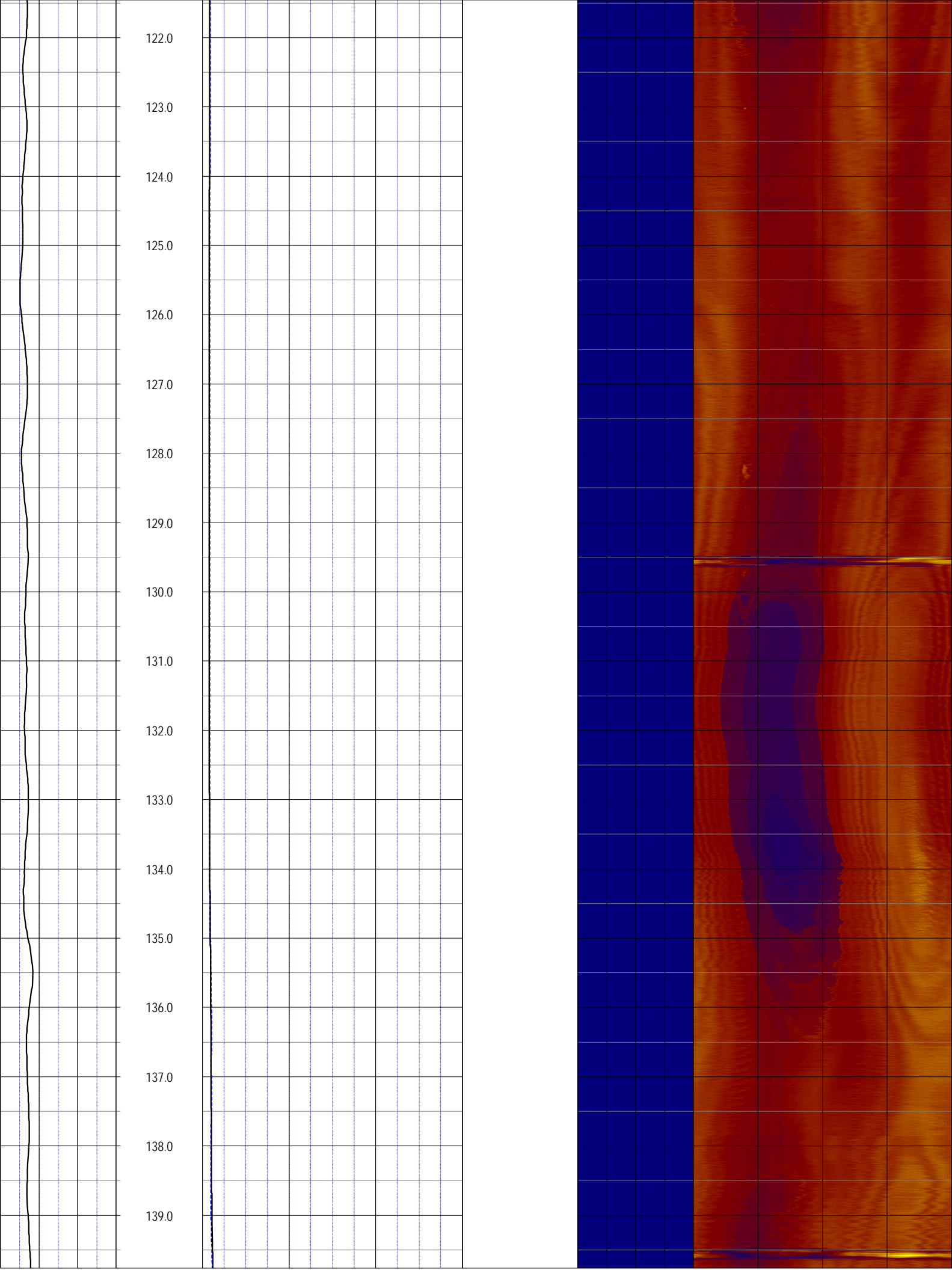


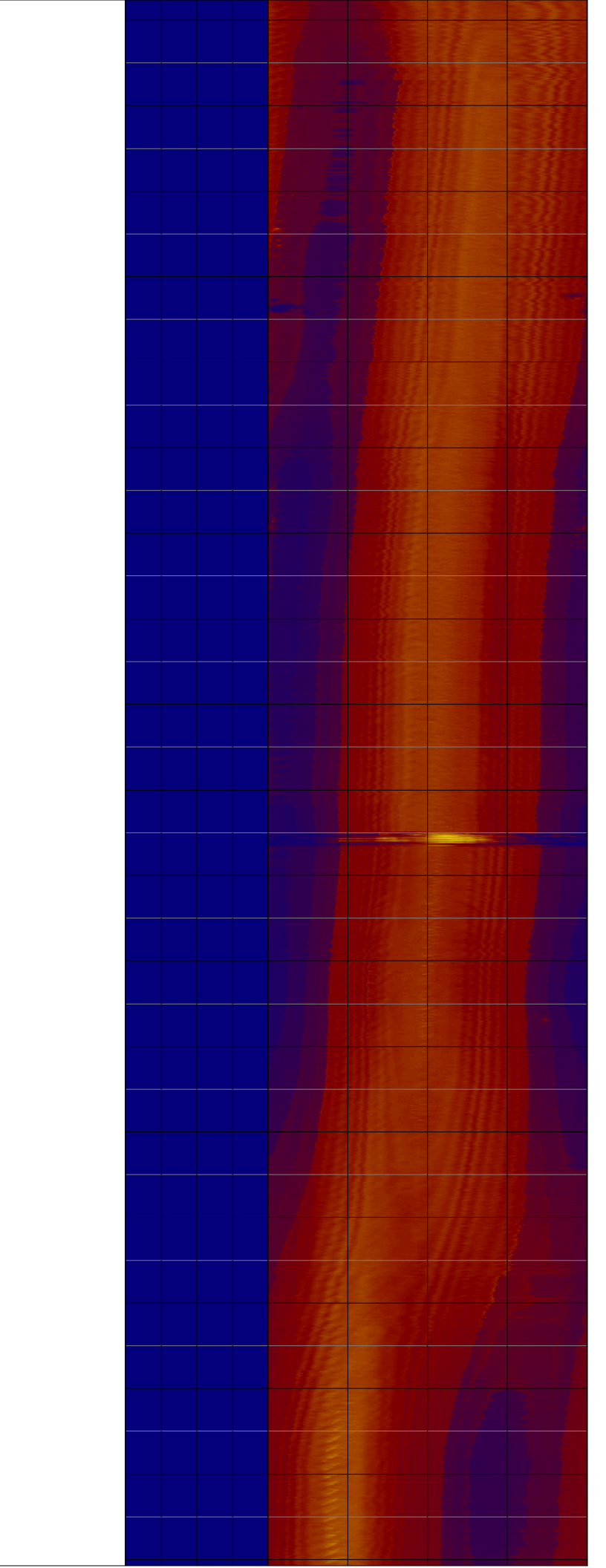
67.0
68.0
69.0
70.0
71.0
72.0
73.0
74.0
75.0
76.0
77.0
78.0
79.0
80.0
81.0
82.0
83.0
84.0

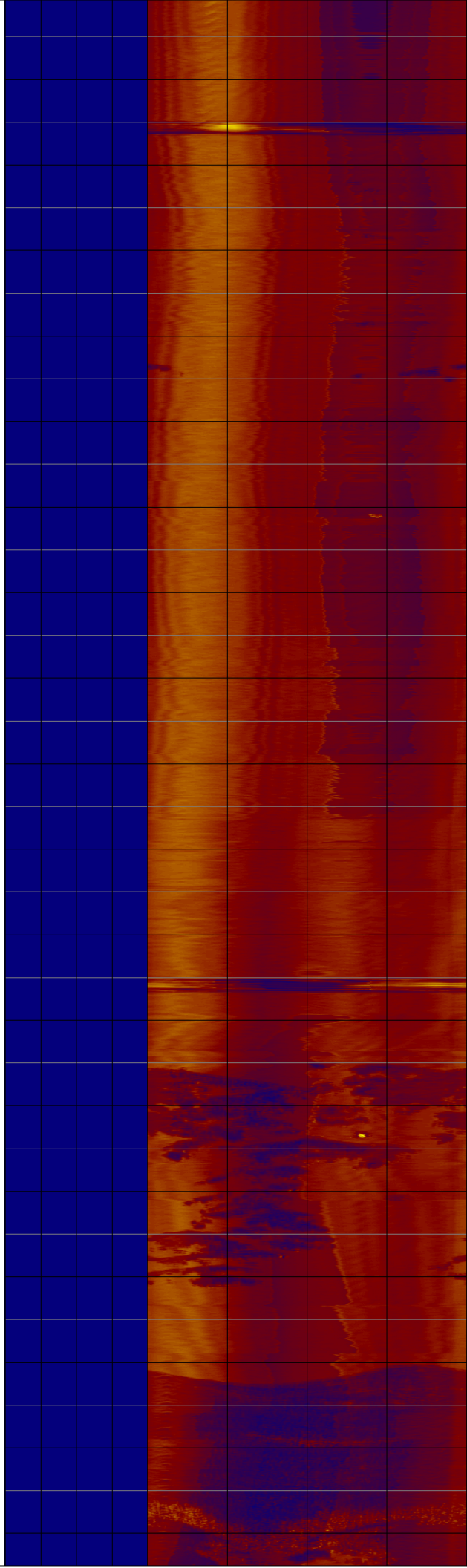
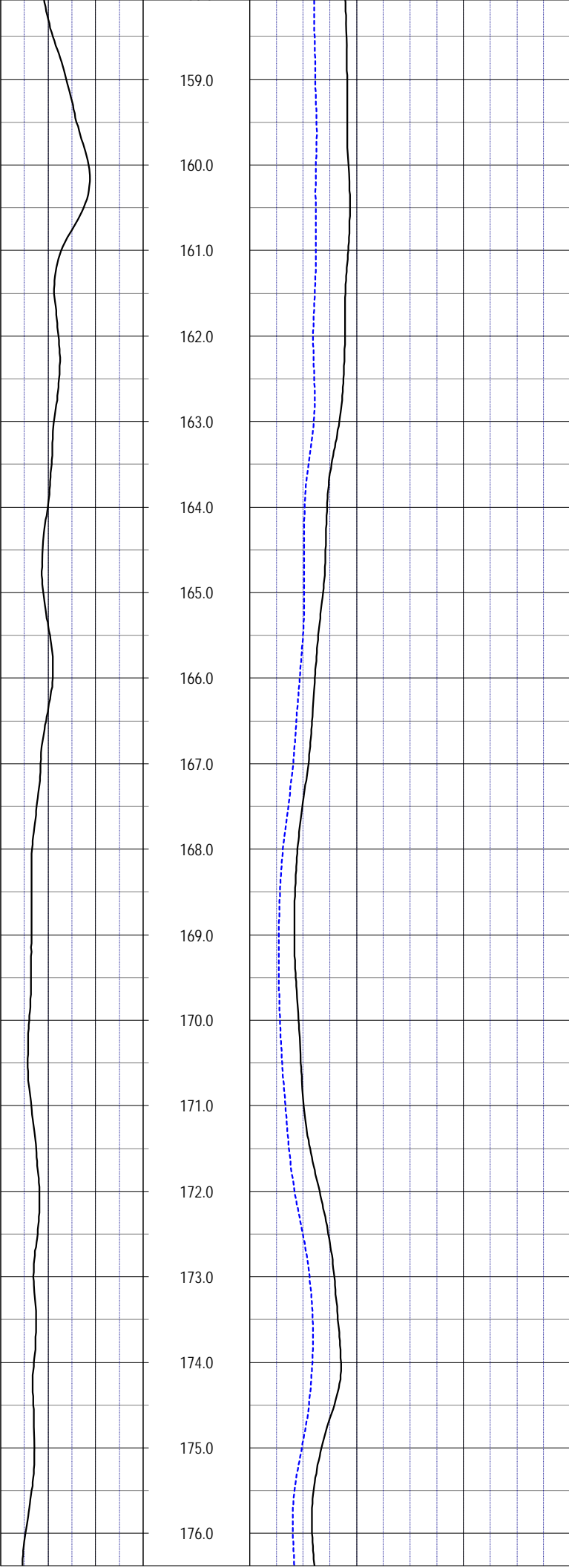


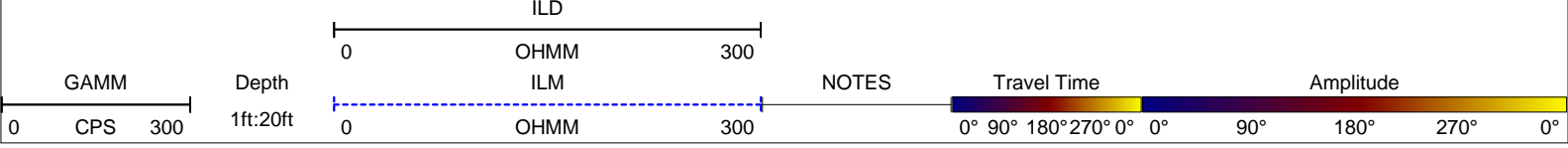
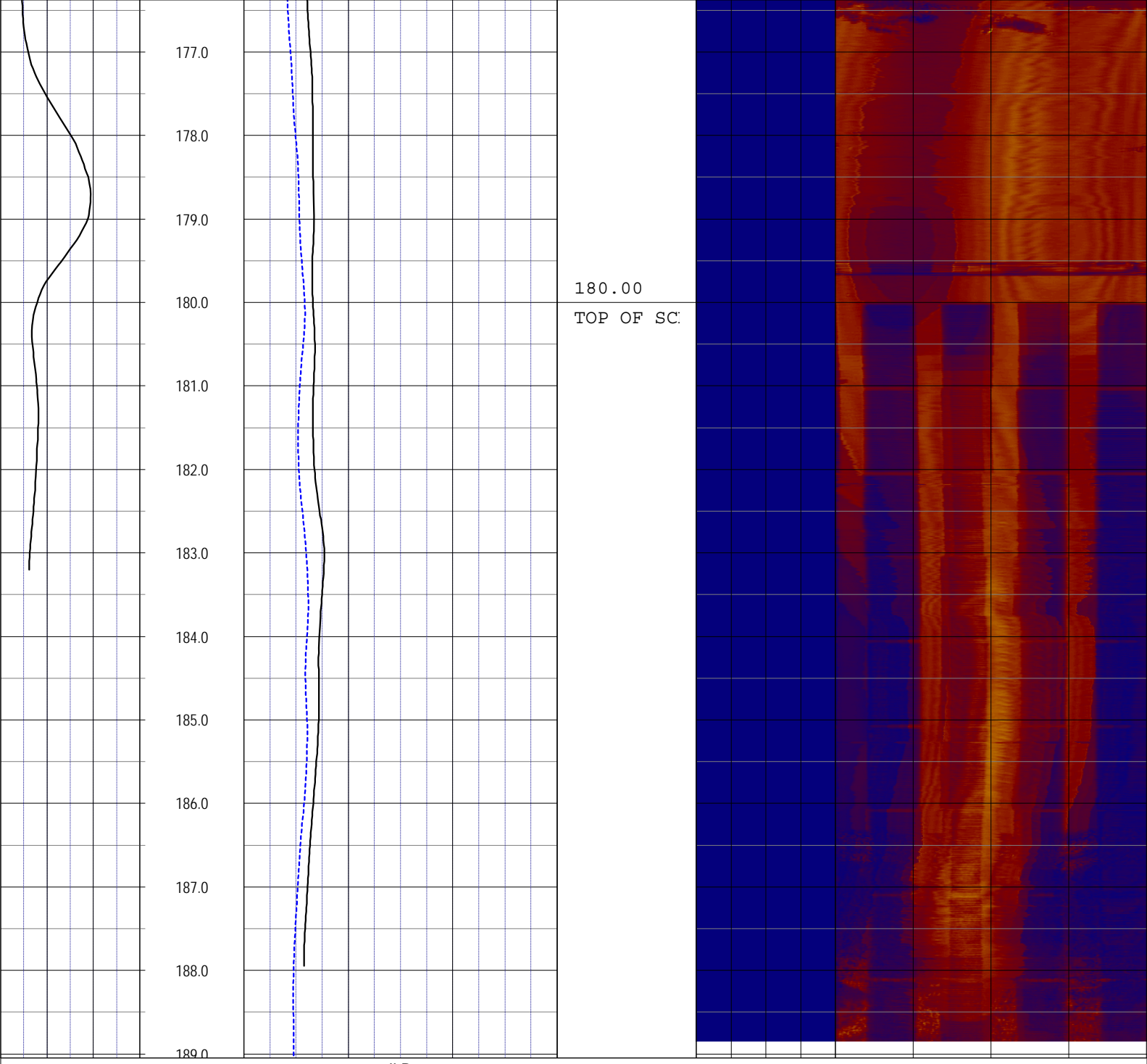












NOTES:
 While due care has been exercised in the performance of these measurements and observations, in accordance with methodologies utilized by the general practitioner, RMLBAKER LLC can make no representations, warranties, or guarantees with respect to latent or concealed conditions that may exist, which may be beyond the detection capabilities of the methodologies used, or that may extend beyond the areas and depths surveyed.
 The geophysical well logs show subsurface conditions as they existed at the dates and locations shown, and it is not warranted that they are representative of subsurface conditions at other locations and times.
 If, at any time, different subsurface conditions from those observed are determined to be present, we must be advised and allowed to review and revise our observations if necessary.

Certificate of Authorization GB 458

END OF LOG