

AQUIFER DATA SYSTEMS

BHC SONIC WVDL

FT. MYERS, FL. 239-872-5617

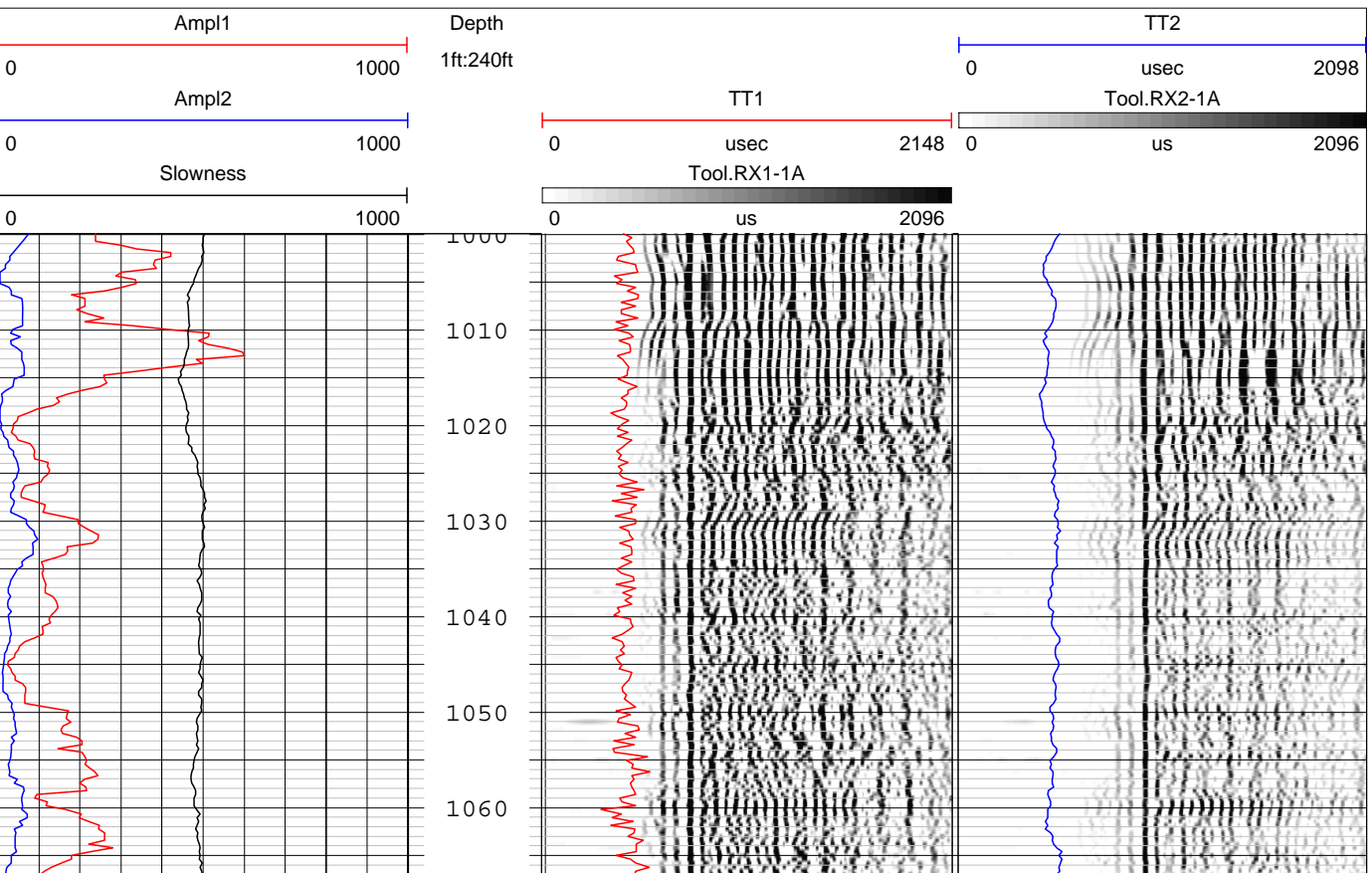
COMPANY **ROWE DRILLING**
 WELL ID TOHO TPW-1
 FIELD LAKE CYPRESS
 COUNTY OSCEOLA STATE FL

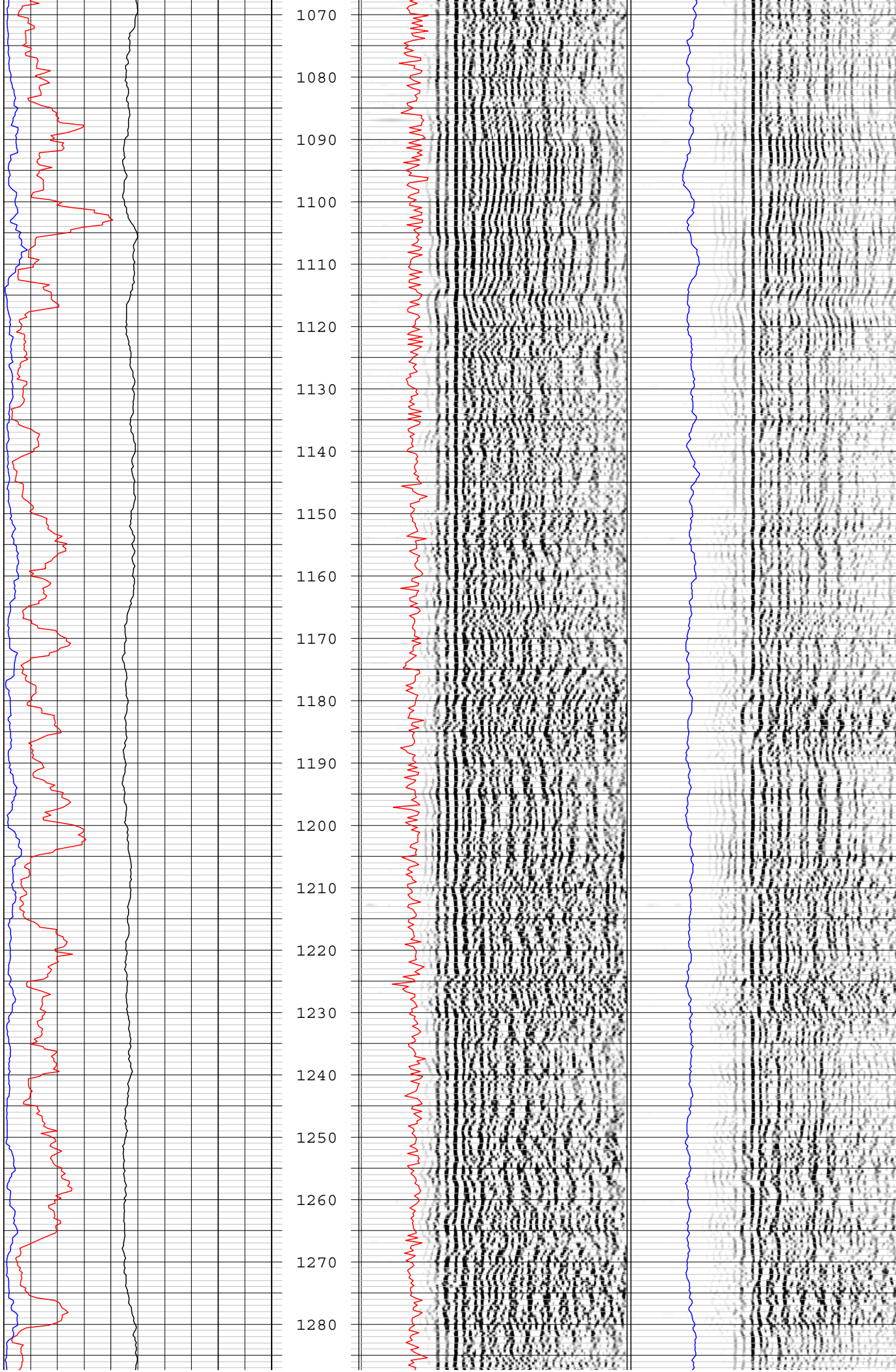
CO	WELL	FLD	CTY	STE	FILING No	SEC	TWP	RGE	LOCATION	OTHER SERVICES

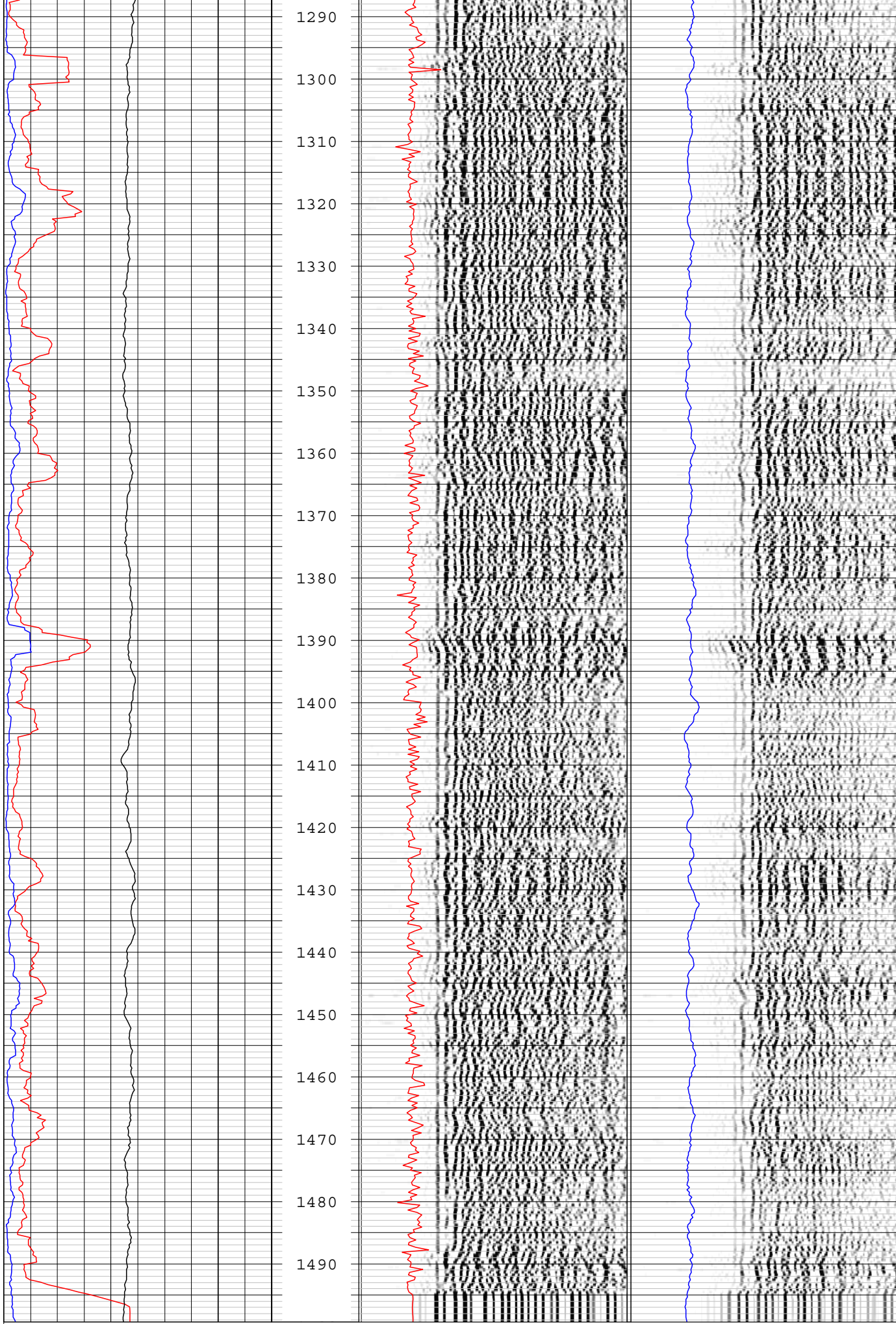
PERMANENT DATUM	ELEVATION	K.B.
LOG MEAS. FROM	TOC	ABOVE PERM. DATUM
DRILLING MEAS. FROM		D.F.
		G.L.

DATE	09-15-08	TYPE FLUID IN HOLE	WATER
RUN No	FOUR	SALINITY	
TYPE LOG	ACOUSTIC	DENSITY	
DEPTH-DRILLER	1500'	LEVEL	16'
DEPTH-LOGGER	1498'	MAX. REC. TEMP.	
BTM LOGGED INTERVAL	1498'		
TOP LOGGED INTERVAL	1000'		
OPERATING RIG TIME	1 HOUR		
RECORDED BY	NOVAK/ADS		
WITNESSED BY	BULMER/TETRA TECH		

BOREHOLE RECORD		CASING RECORD					
RUN NO.	BIT	FROM	TO	SIZE	WGT.	FROM	TO
				17.4"OD	PVC	SURF	1020'







Slowness

Tool.RX1-1A

0 1000

0 us 2096

Ampl2

0 1000

Ampl1

0 1000

TT1

0 usec 2148

Tool.RX2-1A

0 us 2096

Depth

1ft:240ft

TT2

0 usec 2098

AQUIFER DATA SYSTEMS

FLOWMETER

FT. MYERS, FL. 239-872-5617

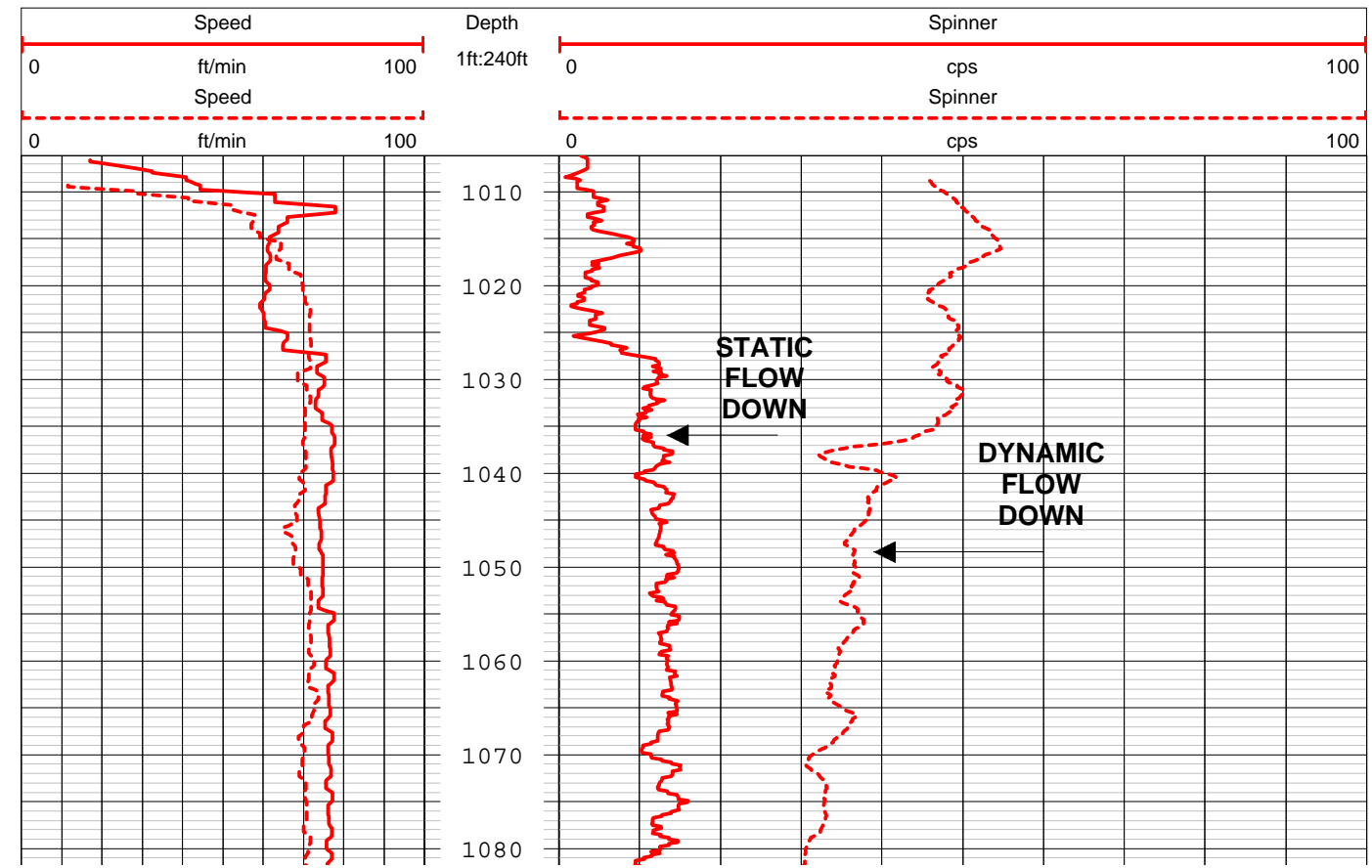
COMPANY **ROWE DRILLING**
 WELL ID **TOHO TPW-1**
 FIELD **LAKE CYPRESS**
 COUNTY **OSCEOLA** STATE **FL**

CO **WELL** FLD **CTY** STE **FILING No**
 LOCATION **SEC** **TWP** **RGE**
 OTHER SERVICES
 DYNAMIC FLOW RATE
 1800 GPM

PERMANENT DATUM **ELEVATION** **K.B.**
 LOG MEAS. FROM **TOC** ABOVE PERM. DATUM **D.F.**
 DRILLING MEAS. FROM **G.L.**

DATE **09-15-08** TYPE FLUID IN HOLE **WATER**
 RUN No **FIVE** SALINITY
 TYPE LOG **FLOW DOWN** DENSITY
 DEPTH-DRILLER **1500'** LEVEL **16'**
 DEPTH-LOGGER **1498'** MAX. REC. TEMP.
 BTM LOGGED INTERVAL **1480'**
 TOP LOGGED INTERVAL **1010'**
 OPERATING RIG TIME **1 HOUR**
 RECORDED BY **NOVAK/ADS**
 WITNESSED BY **BULMER/TETRA TECH**

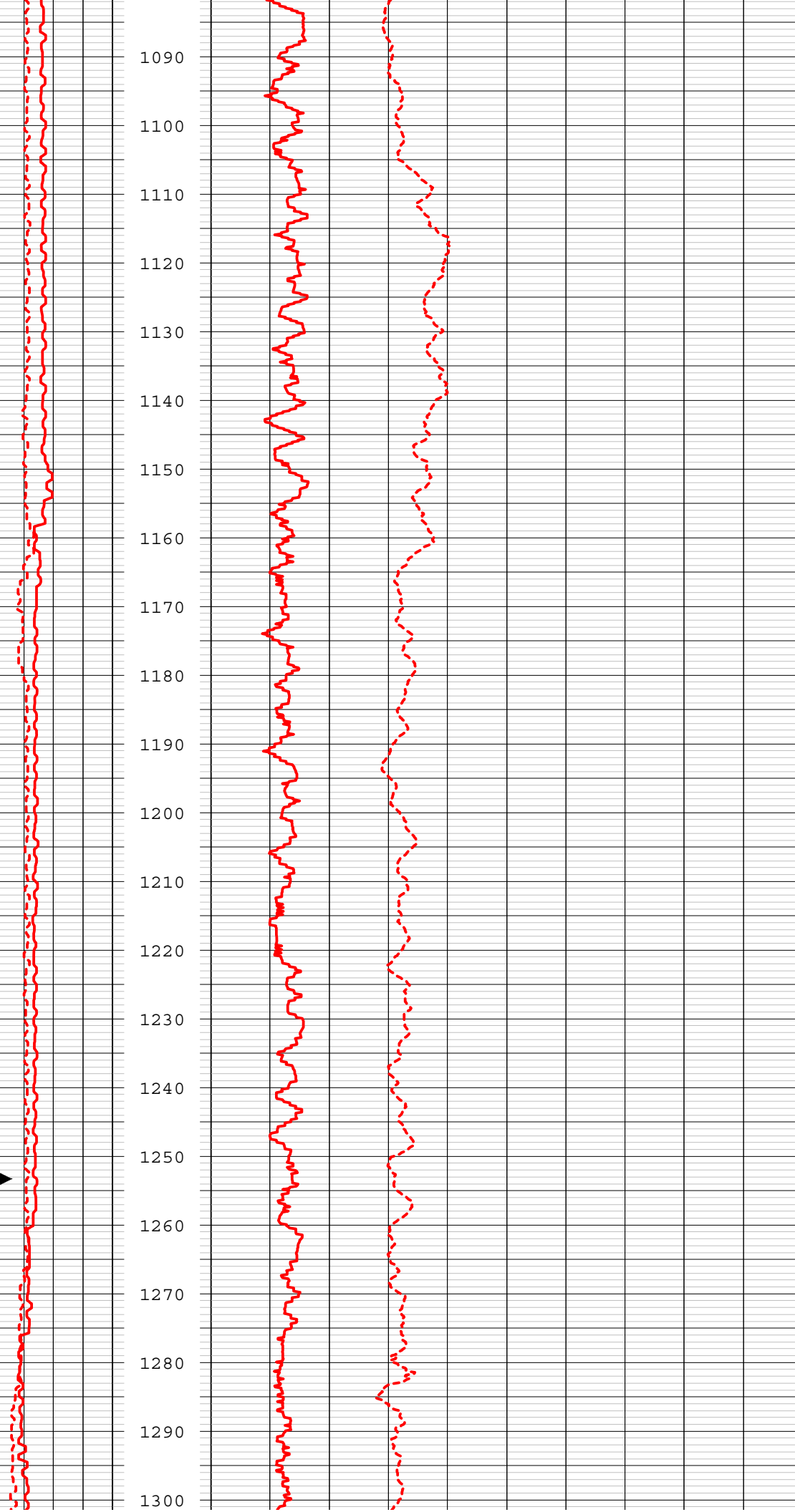
RUN		BOREHOLE RECORD		CASING RECORD			
NO.	BIT	FROM	TO	SIZE	WGT.	FROM	TO
				17.4"OD	PVC	SURF	1020'

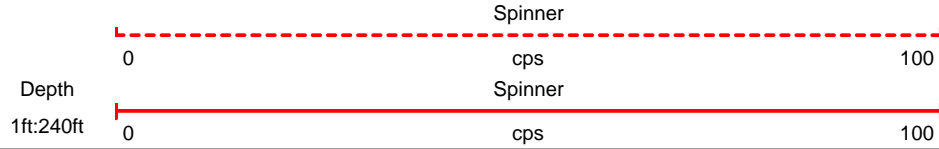
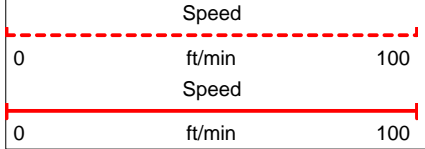
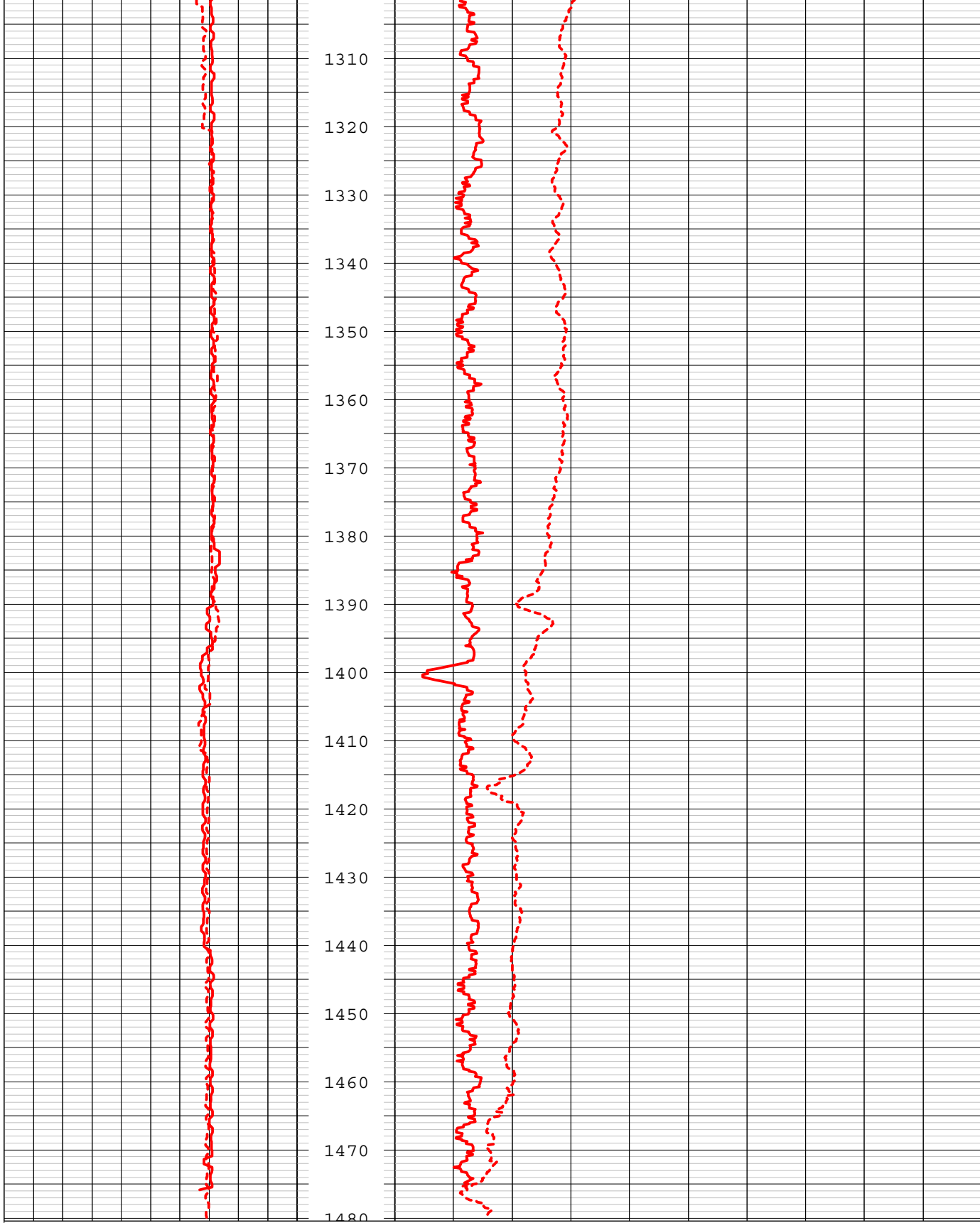


**STATIC AND
DYNAMIC
SPEED
ft/min**



1090
1100
1110
1120
1130
1140
1150
1160
1170
1180
1190
1200
1210
1220
1230
1240
1250
1260
1270
1280
1290
1300





AQUIFER DATA SYSTEMS

FLOWMETER

FT. MYERS, FL. 239-872-5617

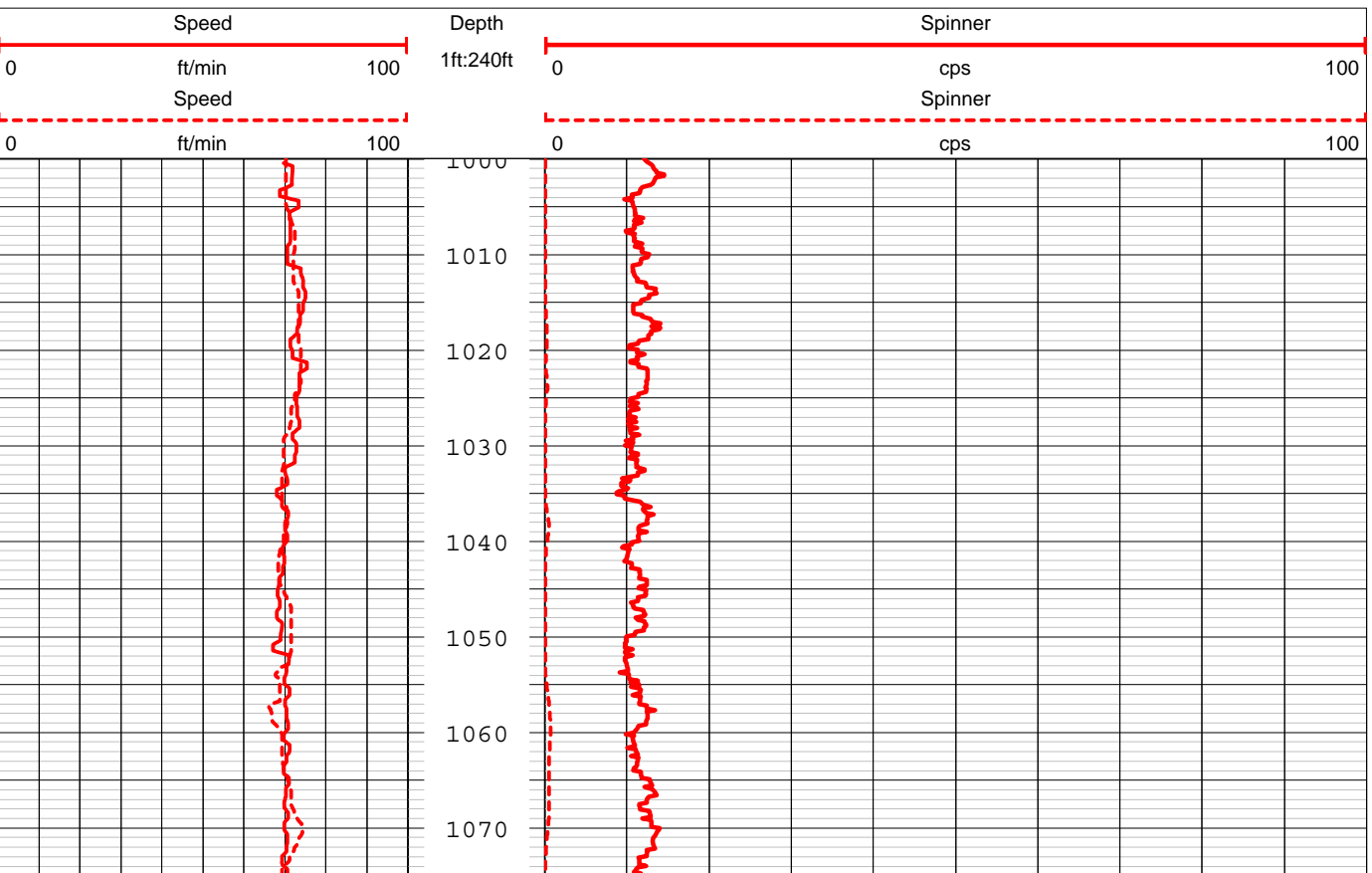
COMPANY **ROWE DRILLING**
 WELL ID TOHO TPW-1
 FIELD LAKE CYPRESS
 COUNTY OSCEOLA STATE FL

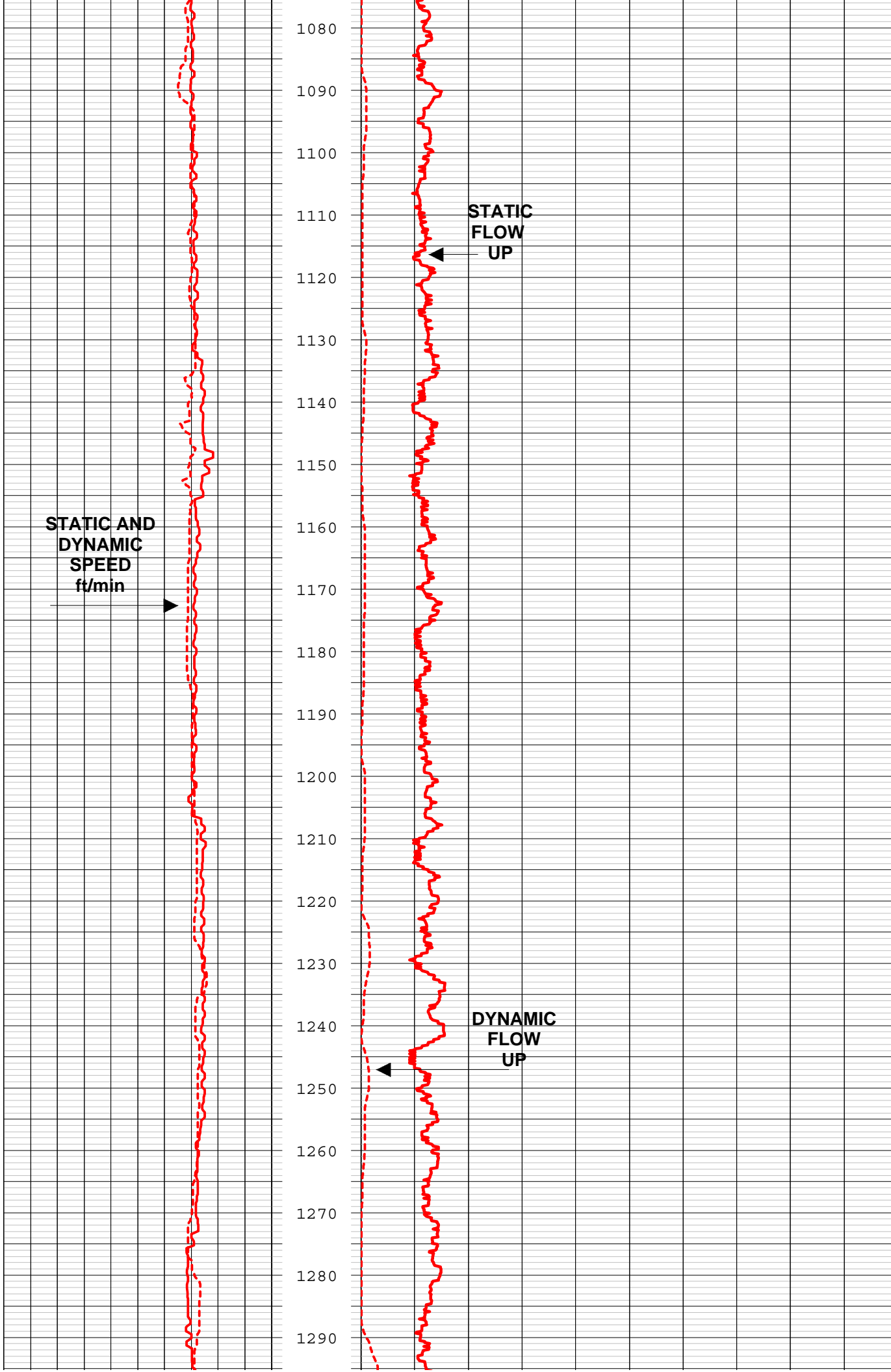
CO	WELL	FLD	CTY	STE	FILING No	LOCATION	OTHER SERVICES
							DYNAMIC FLOW RATE 1800GPM
						SEC	
						TWP	
						RGE	

PERMANENT DATUM	ELEVATION	K.B.
LOG MEAS. FROM	TOC	ABOVE PERM. DATUM
DRILLING MEAS. FROM		D.F.
		G.L.

DATE	09-15-08	TYPE FLUID IN HOLE	WATER
RUN No	SIX	SALINITY	
TYPE LOG	FLOW UP	DENSITY	
DEPTH-DRILLER	1500'	LEVEL	16'
DEPTH-LOGGER	1498'	MAX. REC. TEMP.	
BTM LOGGED INTERVAL	1480'		
TOP LOGGED INTERVAL	1000'		
OPERATING RIG TIME	1.5 HOURS		
RECORDED BY	NOVAK/ADS		
WITNESSED BY	BULMER/TETRA TECH		

BOREHOLE RECORD		CASING RECORD					
RUN NO.	BIT	FROM	TO	SIZE	WGT.	FROM	TO
				17.4"	PVC	SURE	1020'

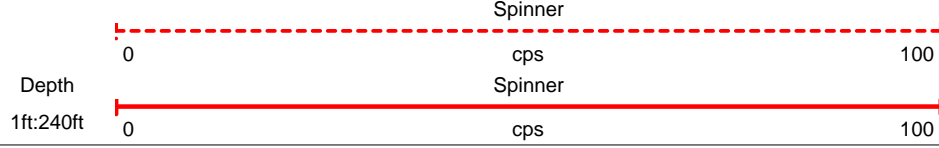
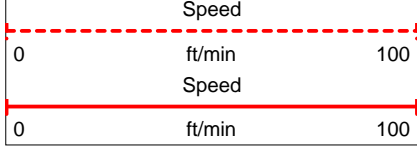
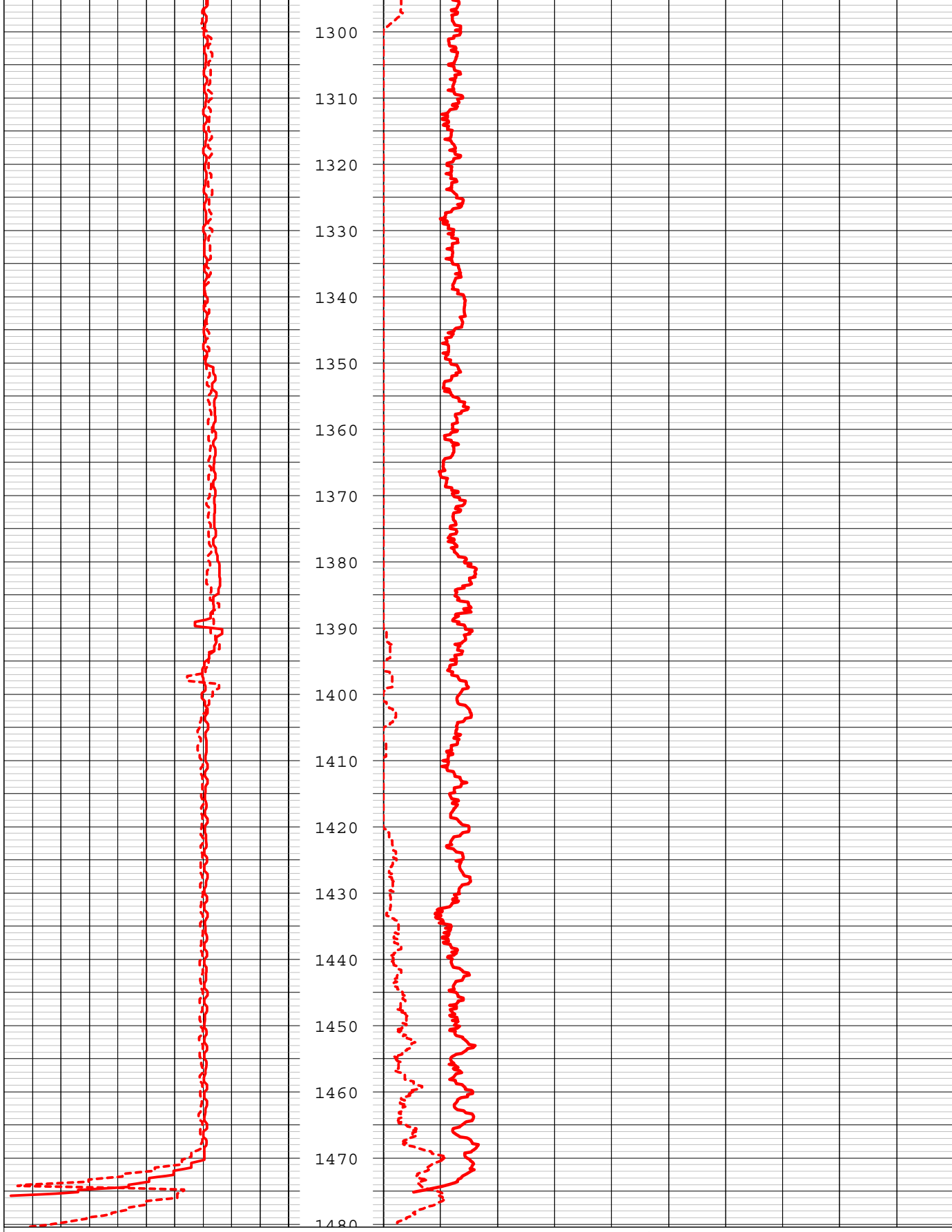




**STATIC AND
DYNAMIC
SPEED
ft/min**

**STATIC
FLOW
UP**

**DYNAMIC
FLOW
UP**



AQUIFER DATA SYSTEMS

GAMMA RAY/CALIPER

FT. MYERS, FL. 239-872-5617

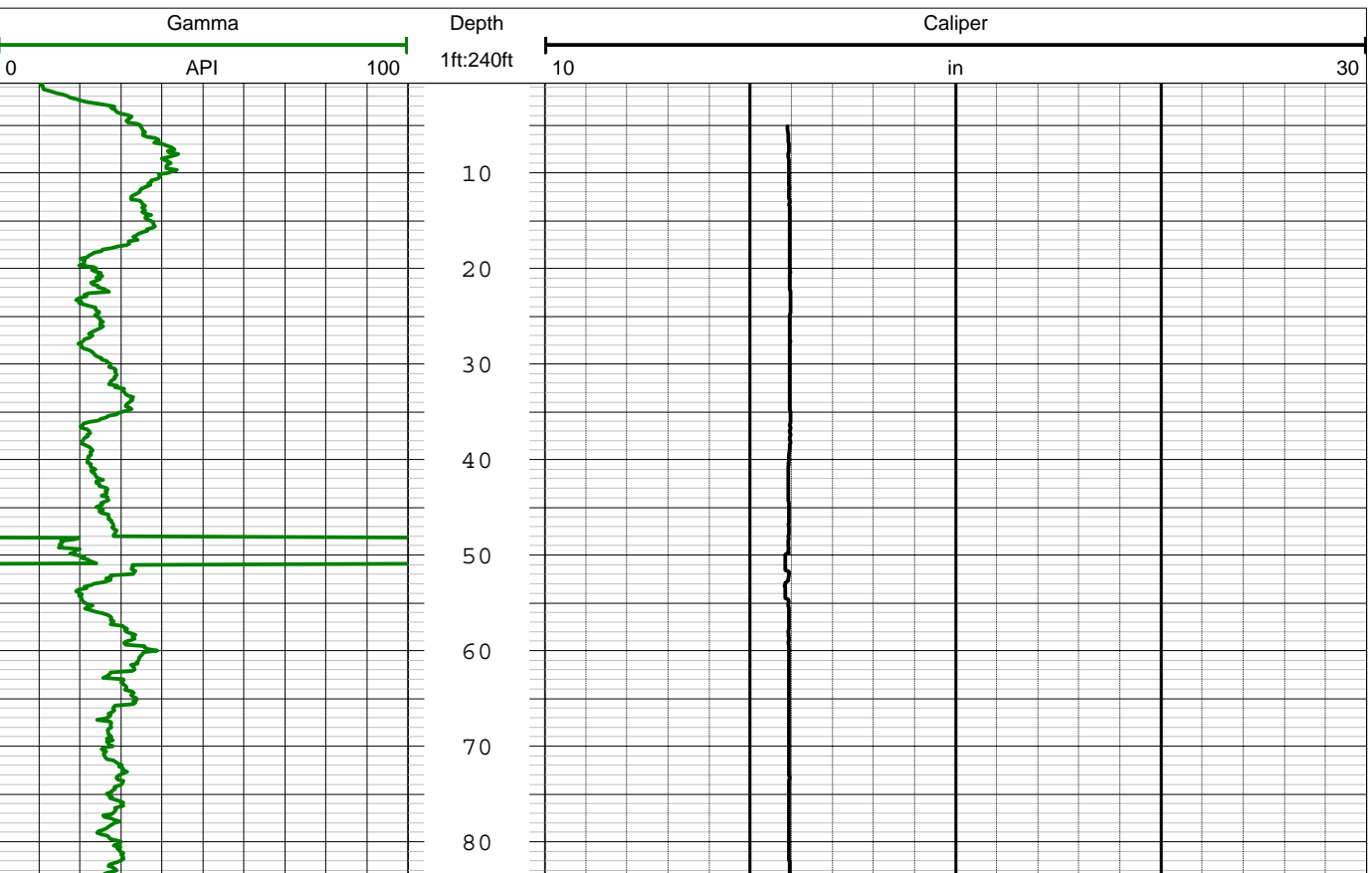
COMPANY **ROWE DRILLING**
 WELL ID TOHO TPW-1
 FIELD LAKE CYPRESS
 COUNTY OSCEOLA STATE FL

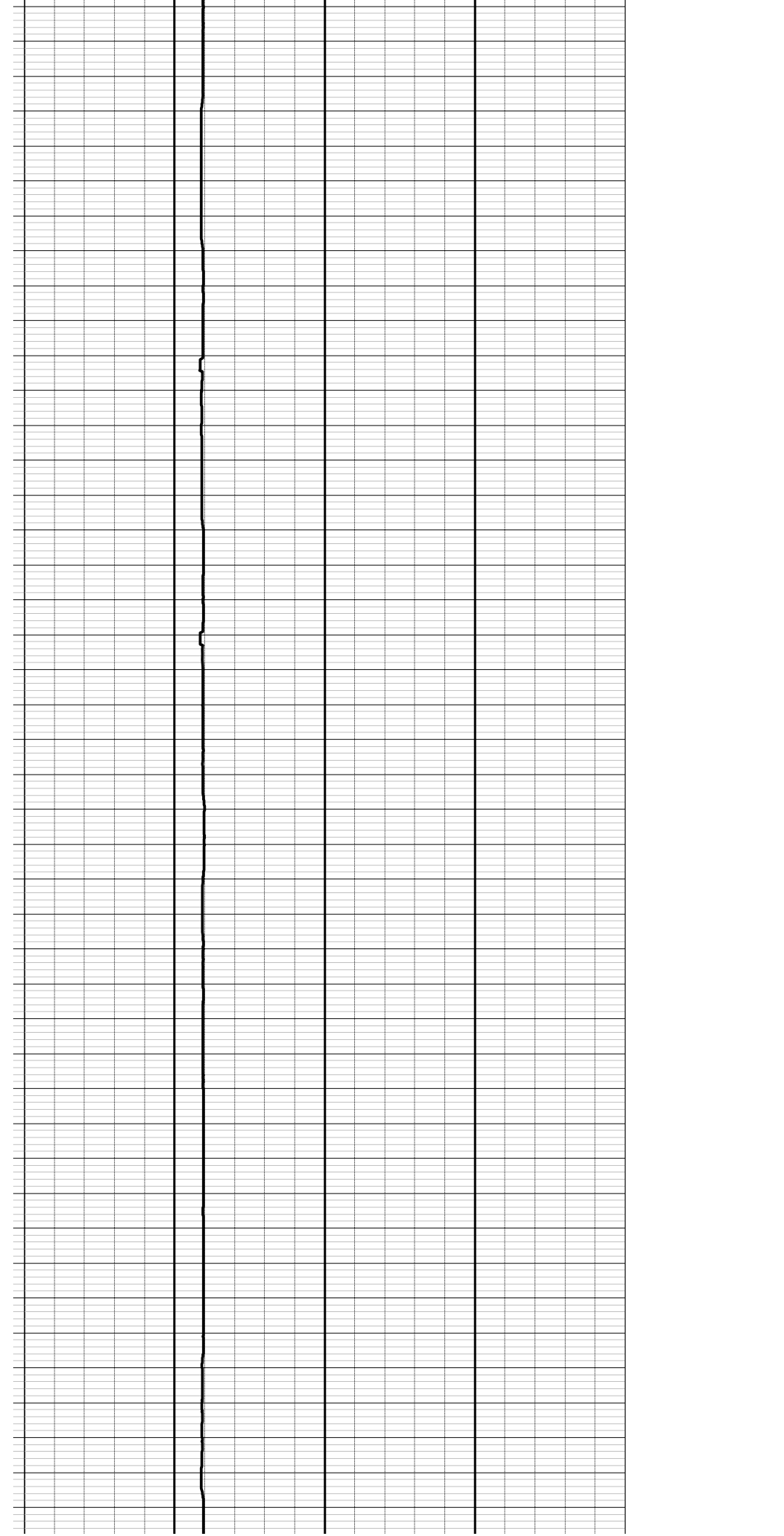
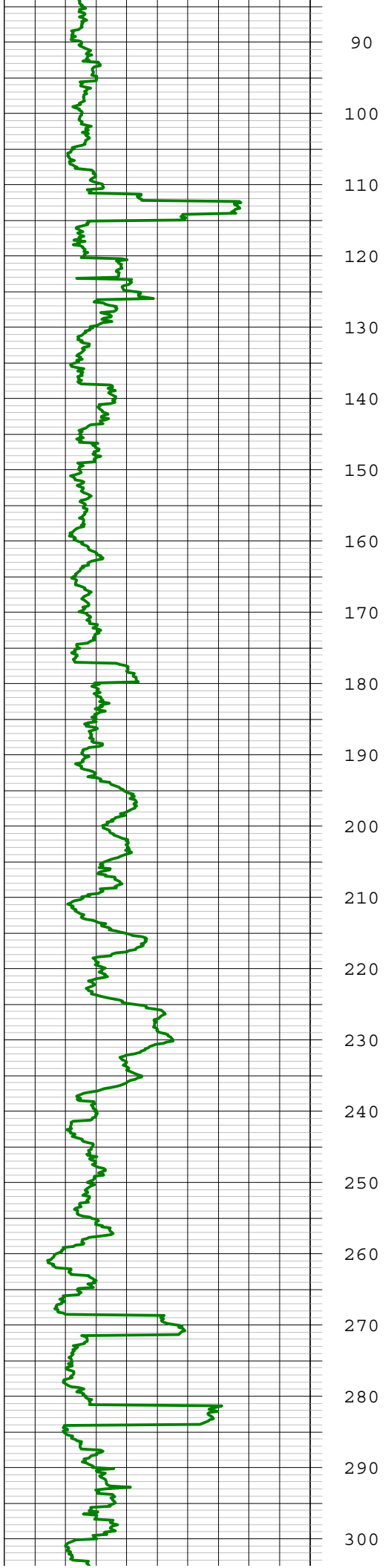
CO	WELL	FLD	CTY	STE	FILING No	SEC	TWP	RGE	OTHER SERVICES

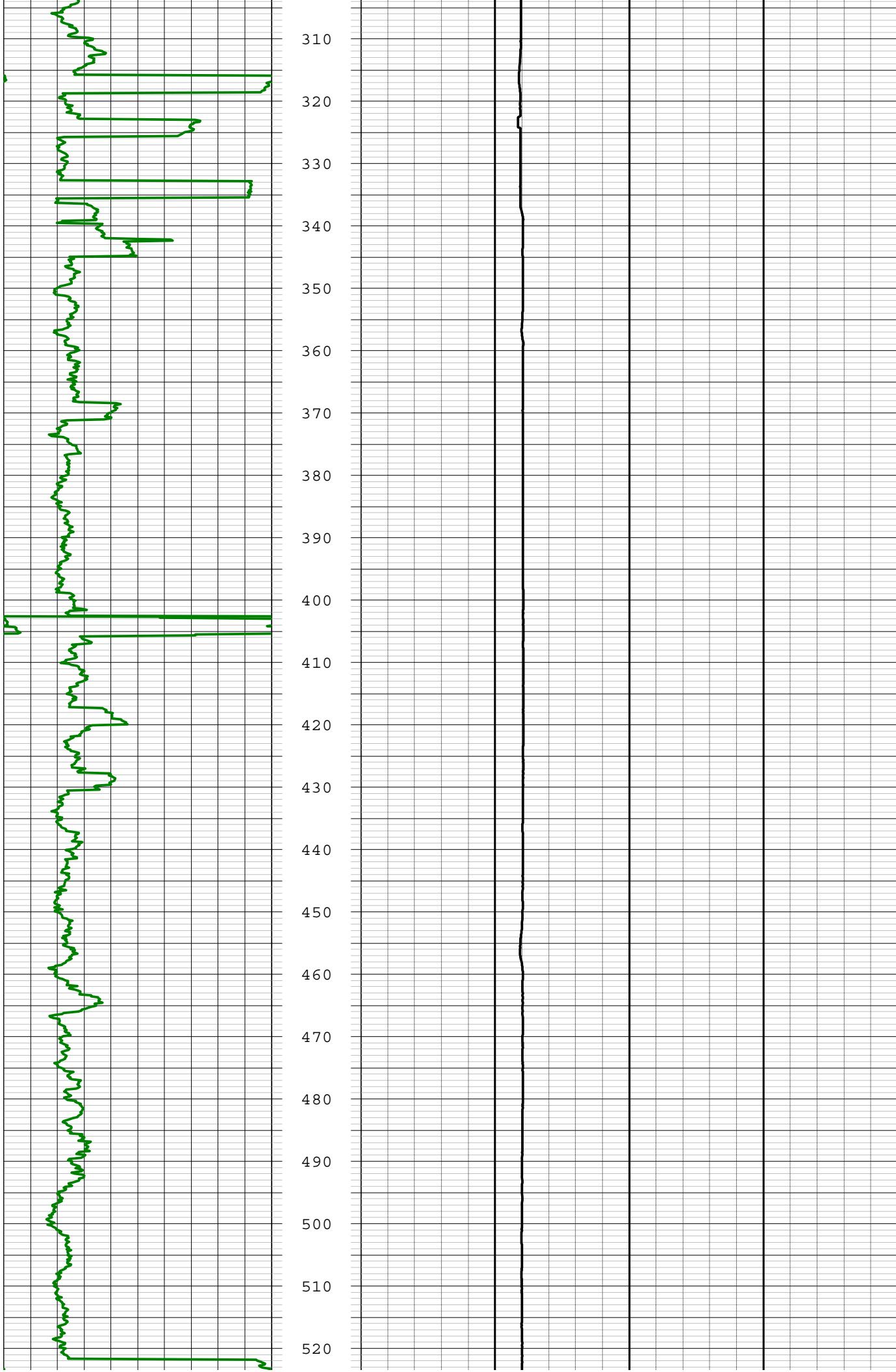
PERMANENT DATUM	ELEVATION	K.B.	
LOG MEAS. FROM	TOC	ABOVE PERM. DATUM	D.F.
DRILLING MEAS. FROM		G.L.	

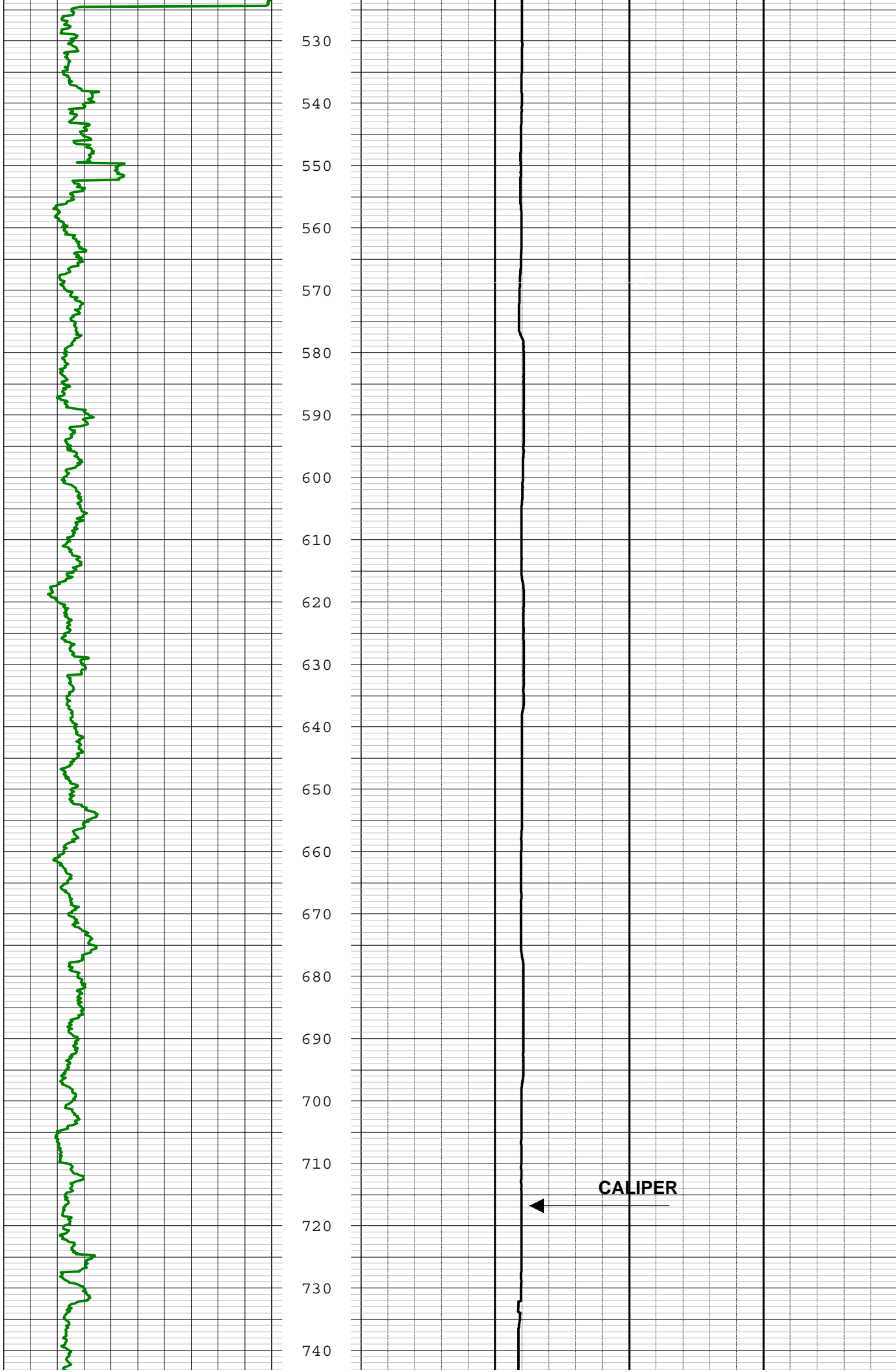
DATE	09-15-08	TYPE FLUID IN HOLE	WATER
RUN No	TWO	SALINITY	
TYPE LOG	GAMMA/CALIPER	DENSITY	
DEPTH-DRILLER	1500'	LEVEL	16'
DEPTH-LOGGER	1498'	MAX. REC. TEMP.	
BTM LOGGED INTERVAL	1498'		
TOP LOGGED INTERVAL	5'		
OPERATING RIG TIME	2 HOURS		
RECORDED BY	NOVAK/ADS		
WITNESSED BY	BULMER/TETRA TECH		

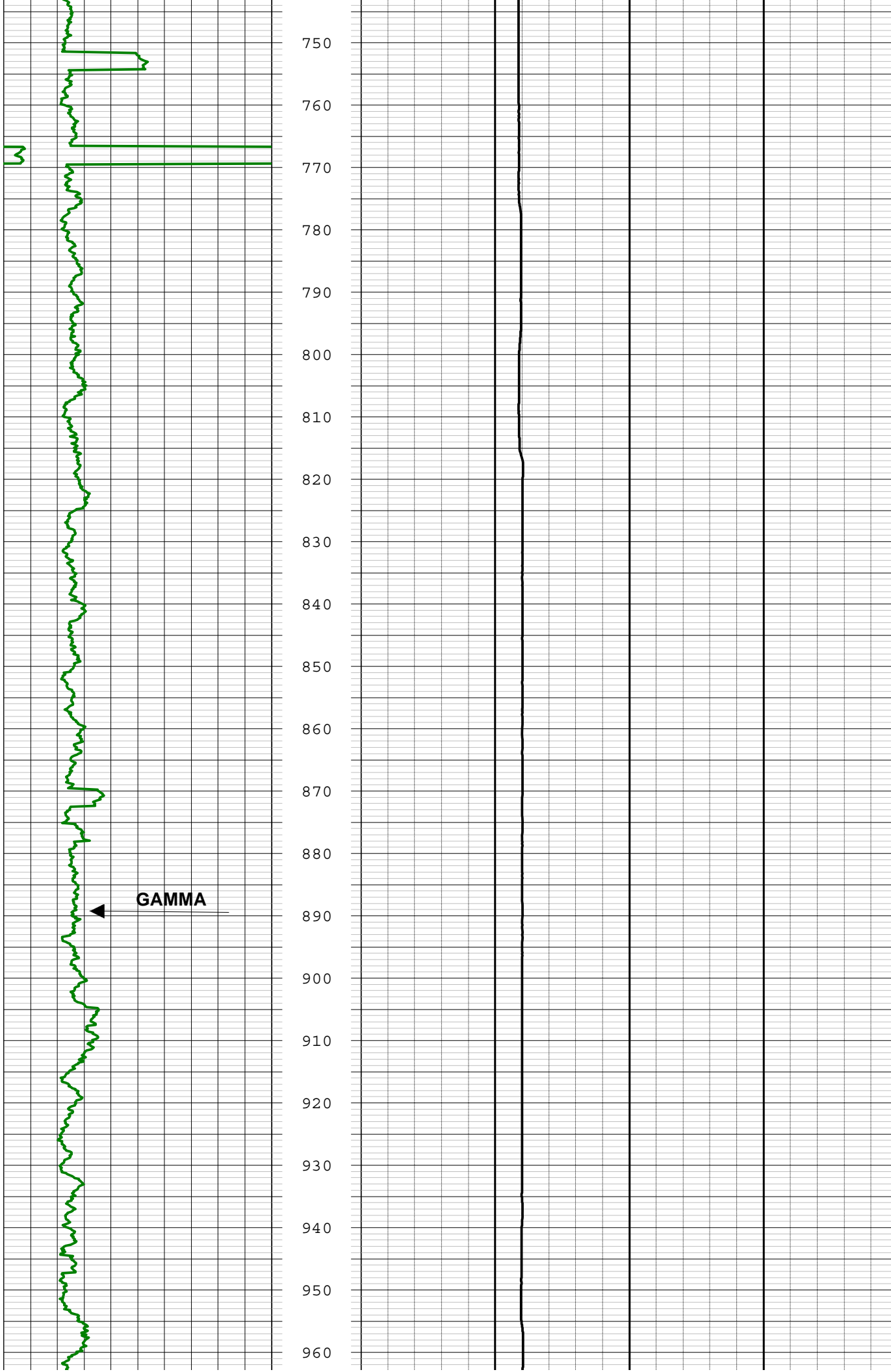
BOREHOLE RECORD		CASING RECORD					
RUN NO.	BIT	FROM	TO	SIZE	WGT.	FROM	TO
				17.4" OD	PVC	SURF	1020'

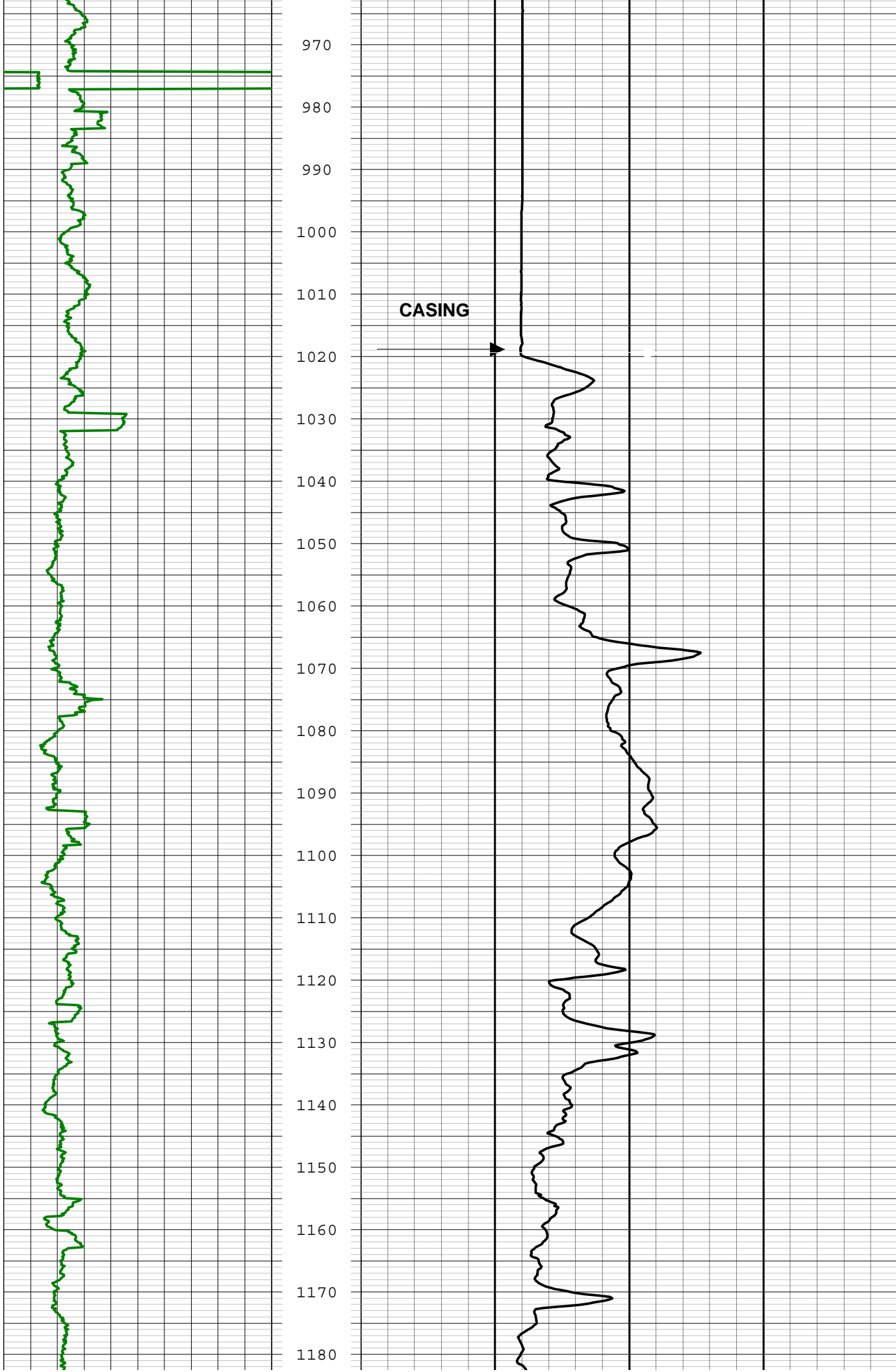


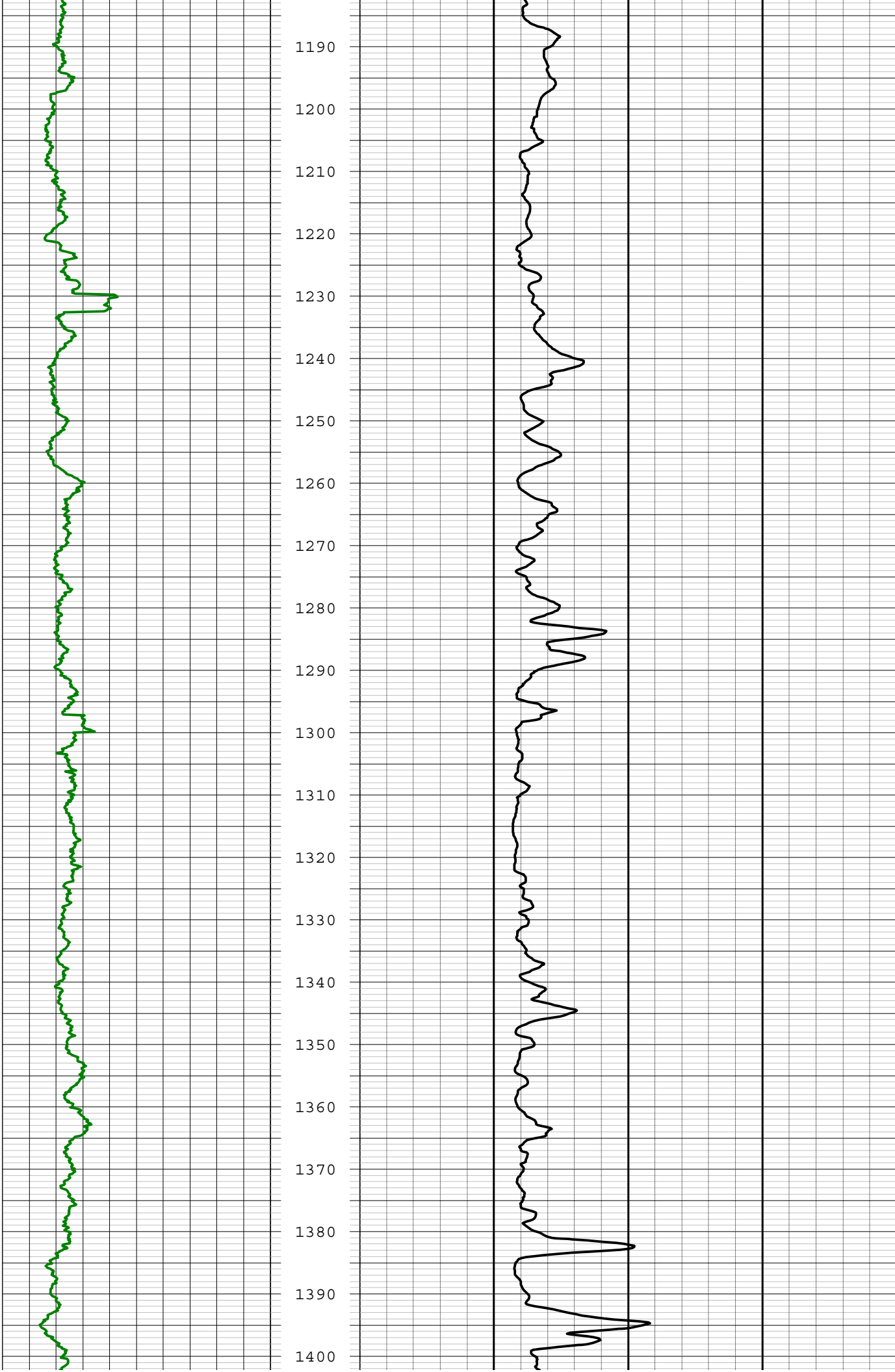


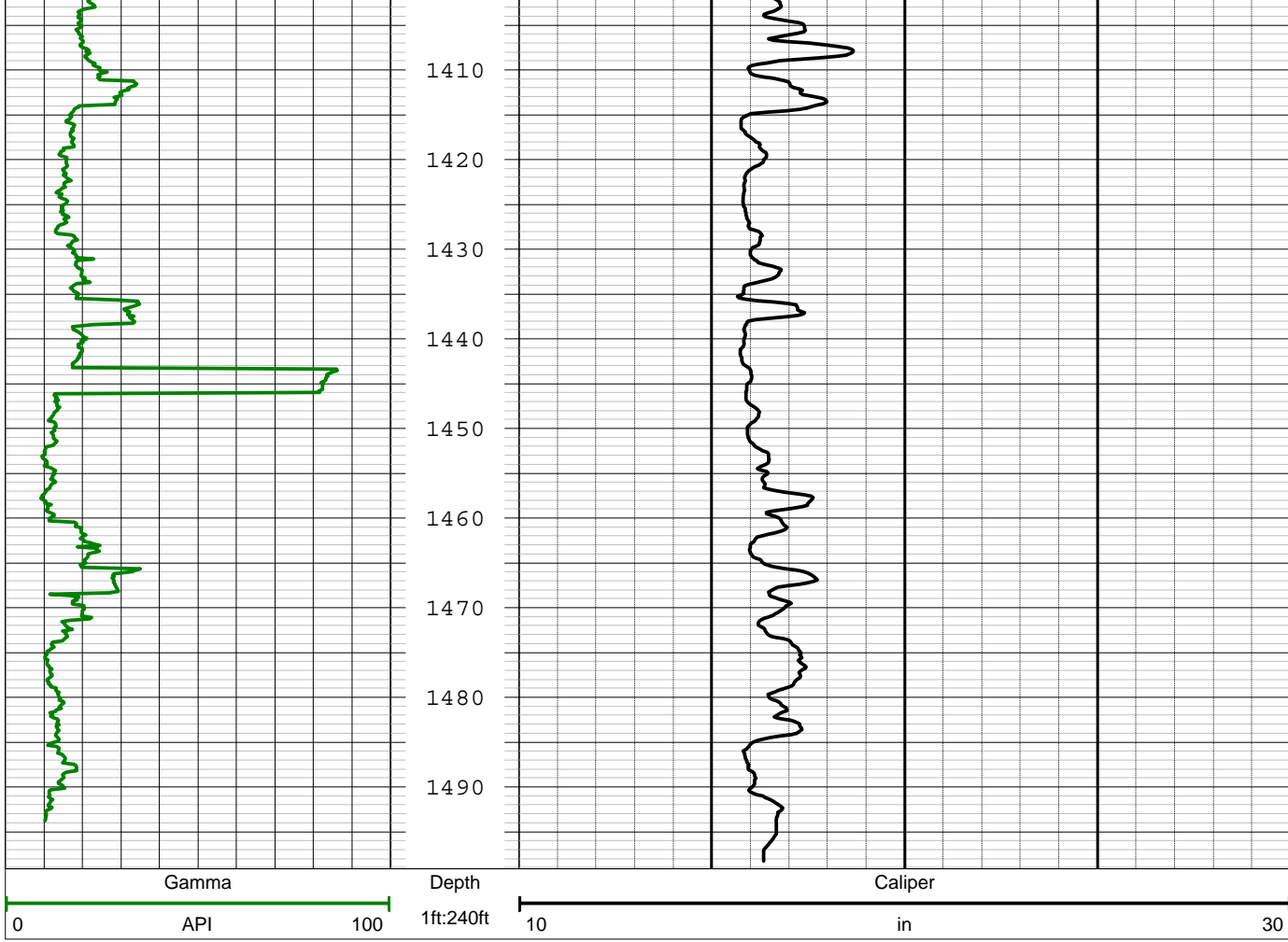












AQUIFER DATA SYSTEMS

ELECTRIC LOG

FT. MYERS, FL. 239-872-5617

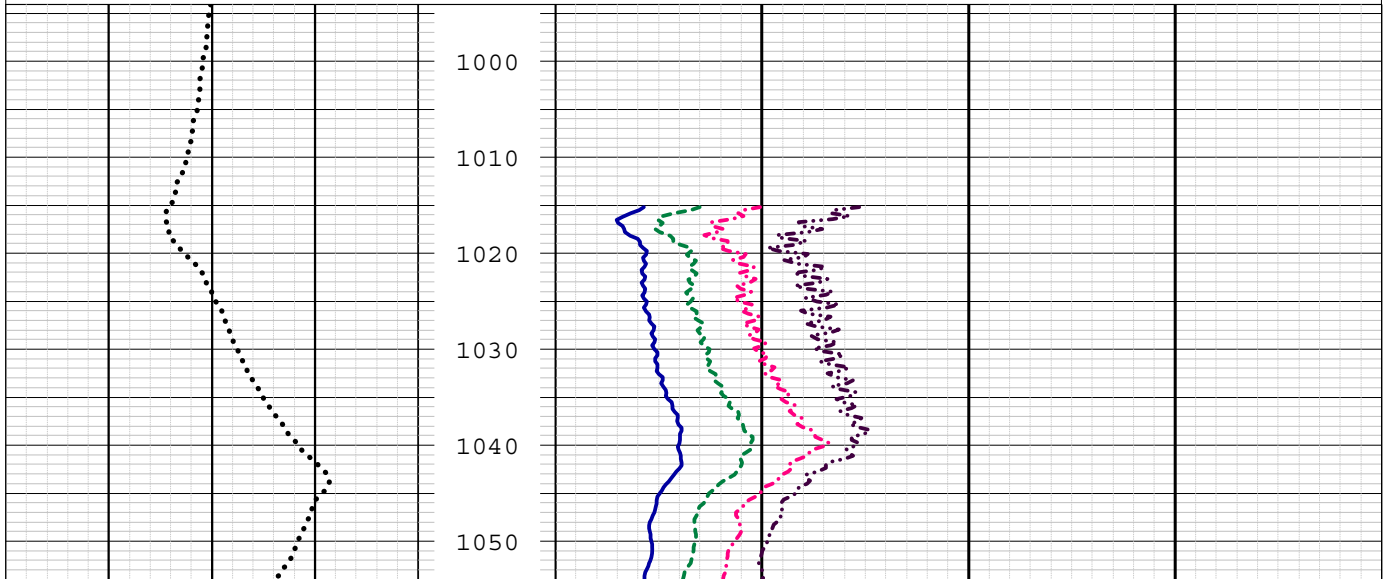
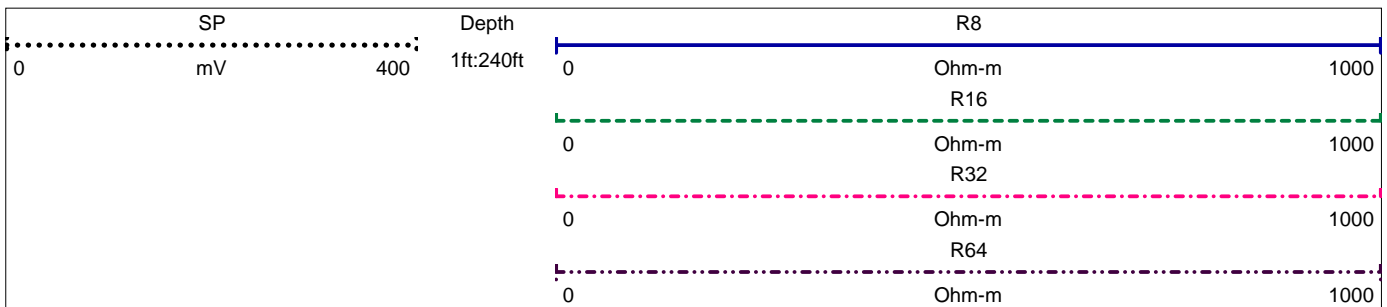
COMPANY **ROWE DRILLING**
 WELL ID TOHO TPW-1
 FIELD LAKE CYPRESS
 COUNTY OSCEOLA STATE FL

CO	WELL	FLD	CTY	STE	FILING No	SEC	TWP	RGE	OTHER SERVICES

PERMANENT DATUM	ELEVATION	K.B.
LOG MEAS. FROM TOC	ABOVE PERM. DATUM	D.F.
DRILLING MEAS. FROM		G.L.

DATE	09-15-08	TYPE FLUID IN HOLE	WATER
RUN No	THREE	SALINITY	
TYPE LOG	LONG SHORT NORMAL RESIST	DENSITY	
DEPTH-DRILLER	1500'	LEVEL	16'
DEPTH-LOGGER	1498'	MAX. REC. TEMP.	
BTM LOGGED INTERVAL	1498'		
TOP LOGGED INTERVAL	1020'		
OPERATING RIG TIME	1 HOUR		
RECORDED BY	NOVAK/ADS		
WITNESSED BY	BULMER/TETRA TECH		

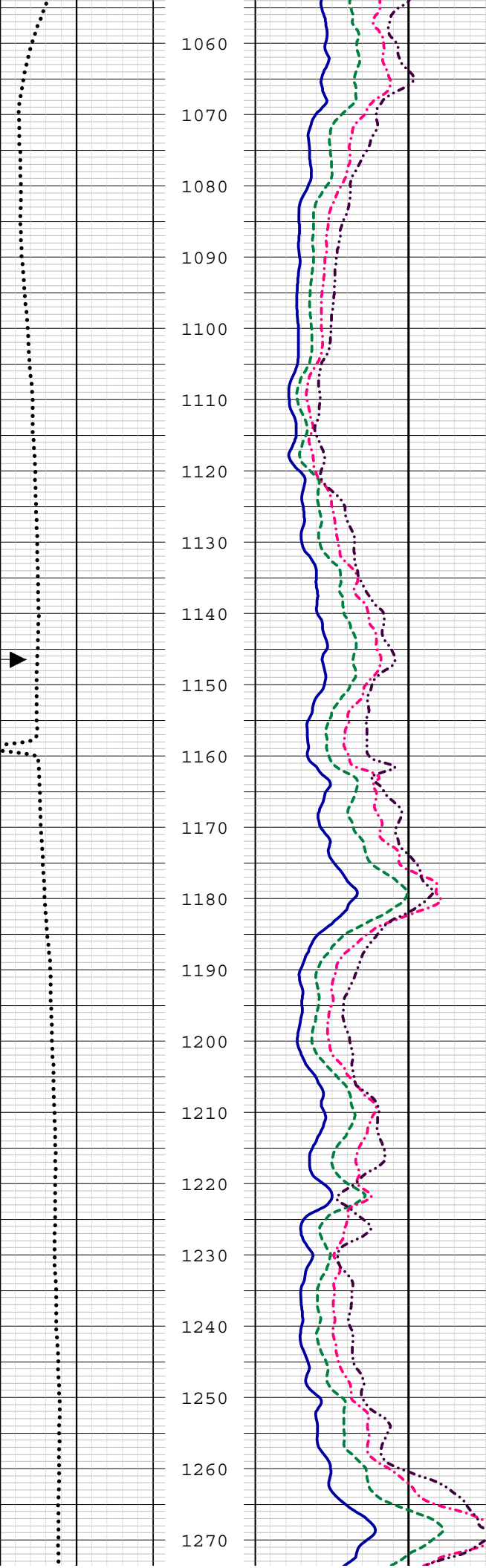
BOREHOLE RECORD		CASING RECORD					
RUN NO.	BIT	FROM	TO	SIZE	WGT.	FROM	TO
				17.4OD	PVC	SURE	1020'



SP

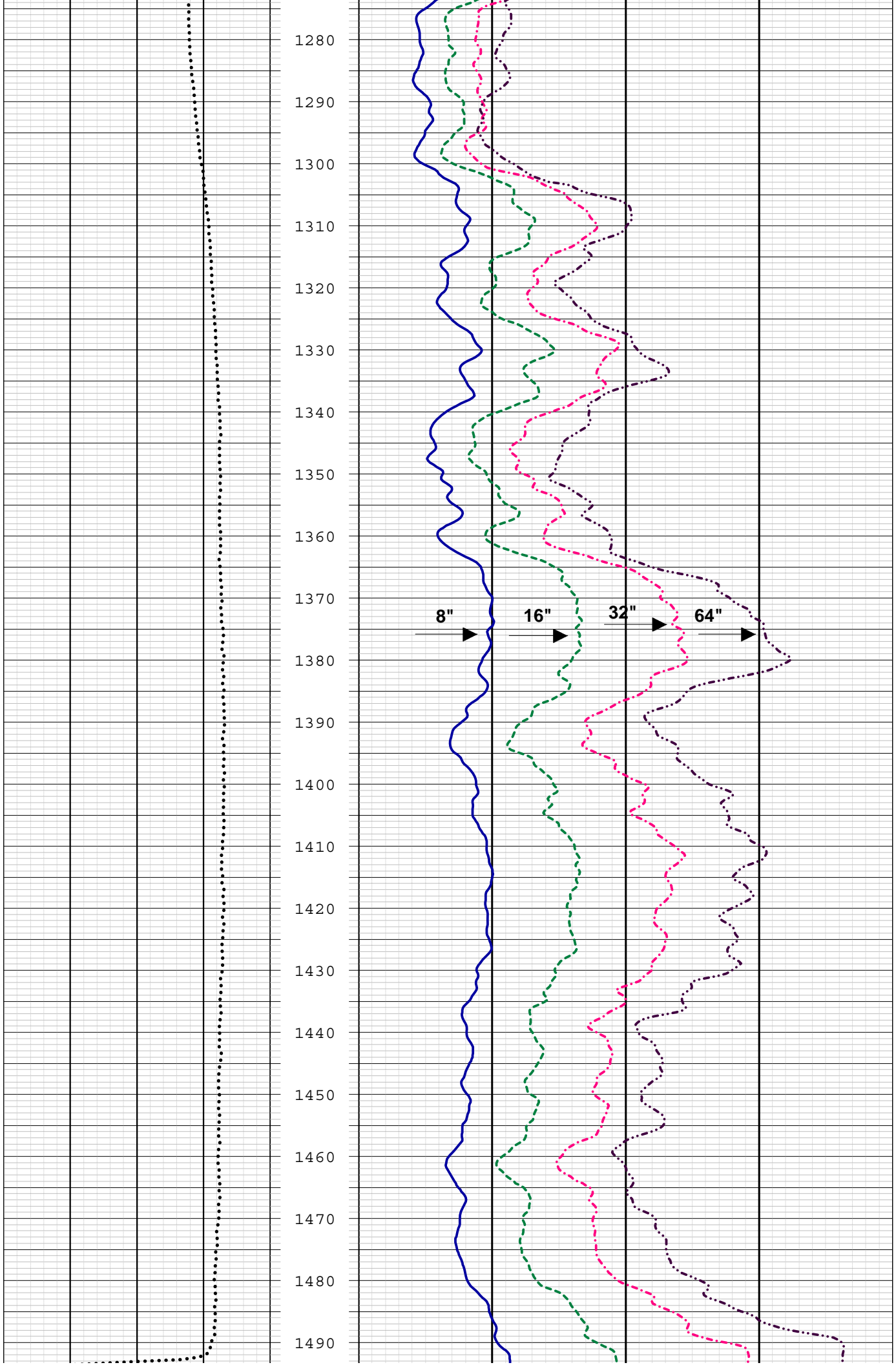


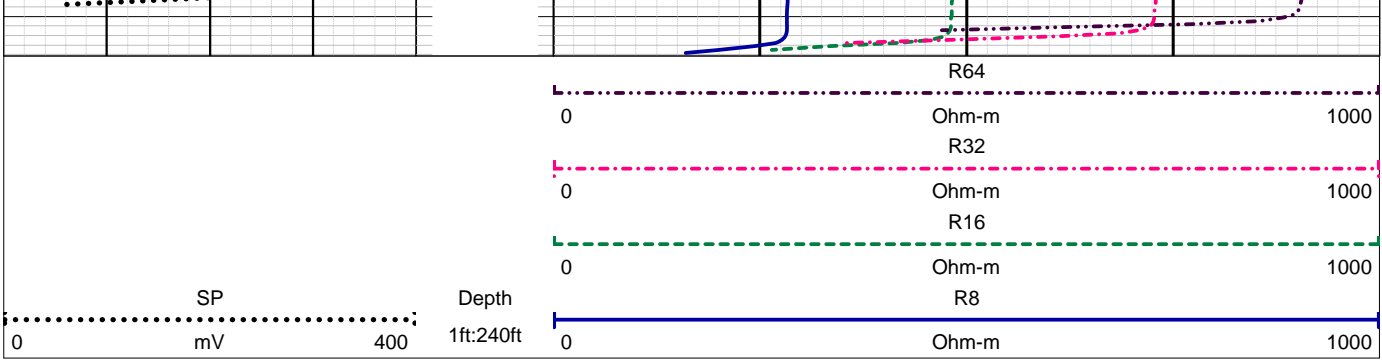
1060
1070
1080
1090
1100
1110
1120
1130
1140
1150
1160
1170
1180
1190
1200
1210
1220
1230
1240
1250
1260
1270



1280
1290
1300
1310
1320
1330
1340
1350
1360
1370
1380
1390
1400
1410
1420
1430
1440
1450
1460
1470
1480
1490

8" 16" 32" 64"





AQUIFER DATA SYSTEMS

TEMPERATURE

FT. MYERS, FL. 239-872-5617

COMPANY **ROWE DRILLING**
 WELL ID TOHO TPW-1
 FIELD LAKE CYPRESS
 COUNTY OSCEOLA STATE FL

CO	WELL	FLD	CTY	STE	FILING No	SEC	TWP	RGE	OTHER SERVICES

PERMANENT DATUM	ELEVATION	K.B.	
LOG MEAS. FROM	TOC	ABOVE PERM. DATUM	D.F.
DRILLING MEAS. FROM		G.L.	

DATE	09-15-08	TYPE FLUID IN HOLE	WATER
RUN No	ONE	SALINITY	
TYPE LOG	TEMPERATURE	DENSITY	
DEPTH-DRILLER	1500'	LEVEL	16'
DEPTH-LOGGER	1498'	MAX. REC. TEMP.	81.3°F
BTM LOGGED INTERVAL	1498'		
TOP LOGGED INTERVAL	1000'		
OPERATING RIG TIME	.75 HOURS		
RECORDED BY	NOVAK/ADS		
WITNESSED BY	BULMER/TETRA TECH		

RUN NO.	BOREHOLE RECORD	FROM	TO	CASING RECORD	SIZE	WGT.	FROM	TO
	BIT			17.4" OD	PVC	SURF		1020'



1090

1100

1110

1120

1130

1140

1150

1160

1170

1180

1190

1200

1210

1220

1230

1240

1250

1260

1270

1280

1290

1300

TEMPERATURE



1310

1320

1330

1340

1350

1360

1370

1380

1390

1400

1410

1420

1430

1440

1450

1460

1470

1480

1490

1500

Depth

1ft:240ft

Temperature

deg F

70

90

