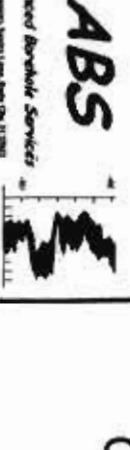


COMBINATION LOG STATIC WELL MM#1



COMPANY : JAMES ATLANTIC	WELL : MM#1	OTHER SERVICES :
WELL : TW-1	LOG # :	DATE :
WELL : COMBIE ROAD WTP	LOG # :	TIME :
FIELD :	LOG # :	TIME :
COUNTY :	LOG # :	TIME :
STATE :	LOG # :	TIME :
LOCATION :	LOG # :	TIME :
TOWNSHIP :	LOG # :	TIME :
SECTION :	LOG # :	TIME :
TOPOGRAPHY :	LOG # :	TIME :
APPROX. WELL D.	LOG # :	TIME :
APPROX. WELL D.	LOG # :	TIME :
APPROX. WELL D.	LOG # :	TIME :
APPROX. WELL D.	LOG # :	TIME :

PRODUCTION-STATIC-PUMPING

TW-1

OTHER SERVICES : BOH

LOG MEASURED FROM : CASE

ELEVATION OF : ELEVATION OF : ELEVATION OF :

LOG MEASURED FROM : CASE

ELEVATION OF : ELEVATION OF : ELEVATION OF :

LOG MEASURED FROM : CASE

ELEVATION OF : ELEVATION OF : ELEVATION OF :

LOG MEASURED FROM : CASE

ELEVATION OF : ELEVATION OF : ELEVATION OF :

LOG MEASURED FROM : CASE

ELEVATION OF : ELEVATION OF : ELEVATION OF :

LOG MEASURED FROM : CASE

ELEVATION OF : ELEVATION OF : ELEVATION OF :

LOG MEASURED FROM : CASE

ELEVATION OF : ELEVATION OF : ELEVATION OF :

LOG MEASURED FROM : CASE

ELEVATION OF : ELEVATION OF : ELEVATION OF :

PUMPING WATER QUALITY

TW-1

OTHER SERVICES : BOH

LOG MEASURED FROM : CASE

ELEVATION OF : ELEVATION OF : ELEVATION OF :

LOG MEASURED FROM : CASE

ELEVATION OF : ELEVATION OF : ELEVATION OF :

LOG MEASURED FROM : CASE

ELEVATION OF : ELEVATION OF : ELEVATION OF :

LOG MEASURED FROM : CASE

ELEVATION OF : ELEVATION OF : ELEVATION OF :

LOG MEASURED FROM : CASE

ELEVATION OF : ELEVATION OF : ELEVATION OF :

LOG MEASURED FROM : CASE

ELEVATION OF : ELEVATION OF : ELEVATION OF :

LOG MEASURED FROM : CASE

ELEVATION OF : ELEVATION OF : ELEVATION OF :

LOG MEASURED FROM : CASE

ELEVATION OF : ELEVATION OF : ELEVATION OF :

COMBINATION LOG

TW-1

OTHER SERVICES : BOH

LOG MEASURED FROM : CASE

ELEVATION OF : ELEVATION OF : ELEVATION OF :

LOG MEASURED FROM : CASE

ELEVATION OF : ELEVATION OF : ELEVATION OF :

LOG MEASURED FROM : CASE

ELEVATION OF : ELEVATION OF : ELEVATION OF :

LOG MEASURED FROM : CASE

ELEVATION OF : ELEVATION OF : ELEVATION OF :

LOG MEASURED FROM : CASE

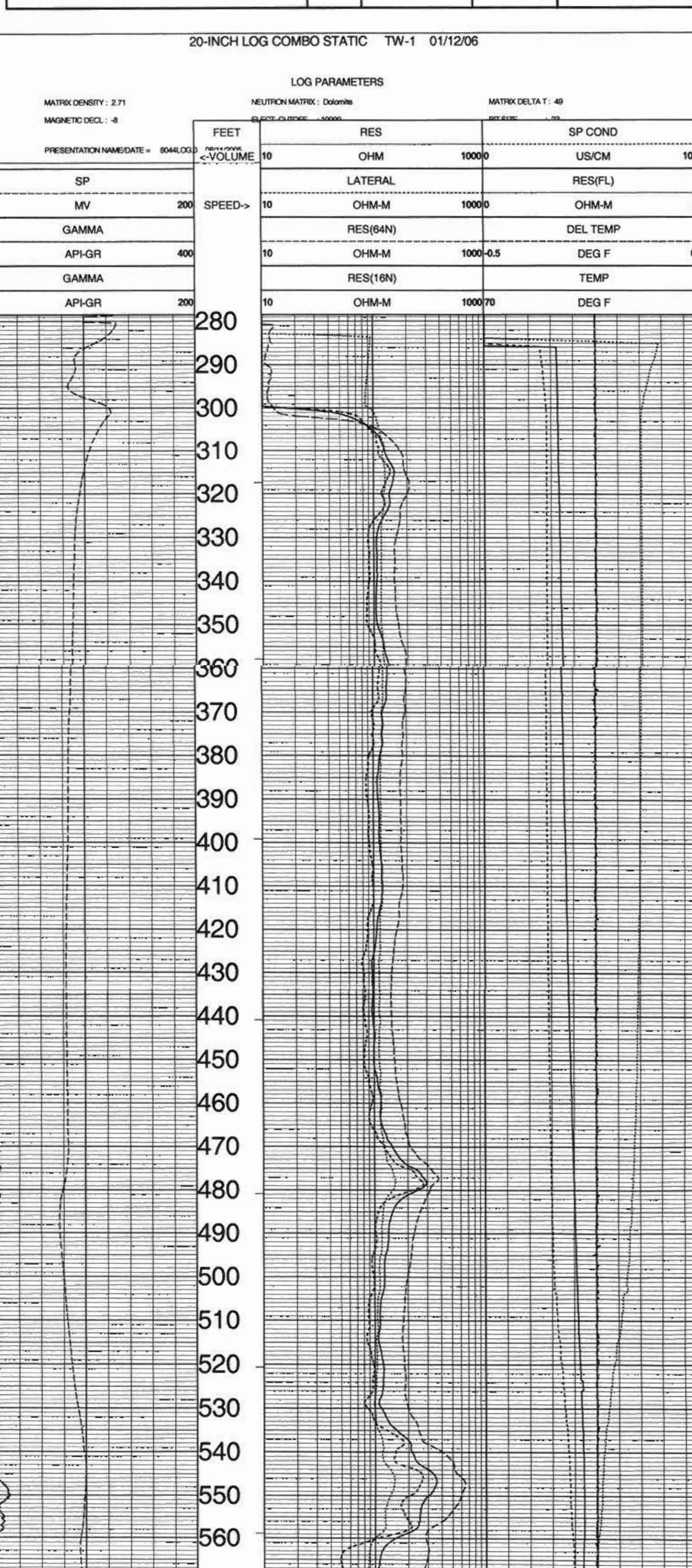
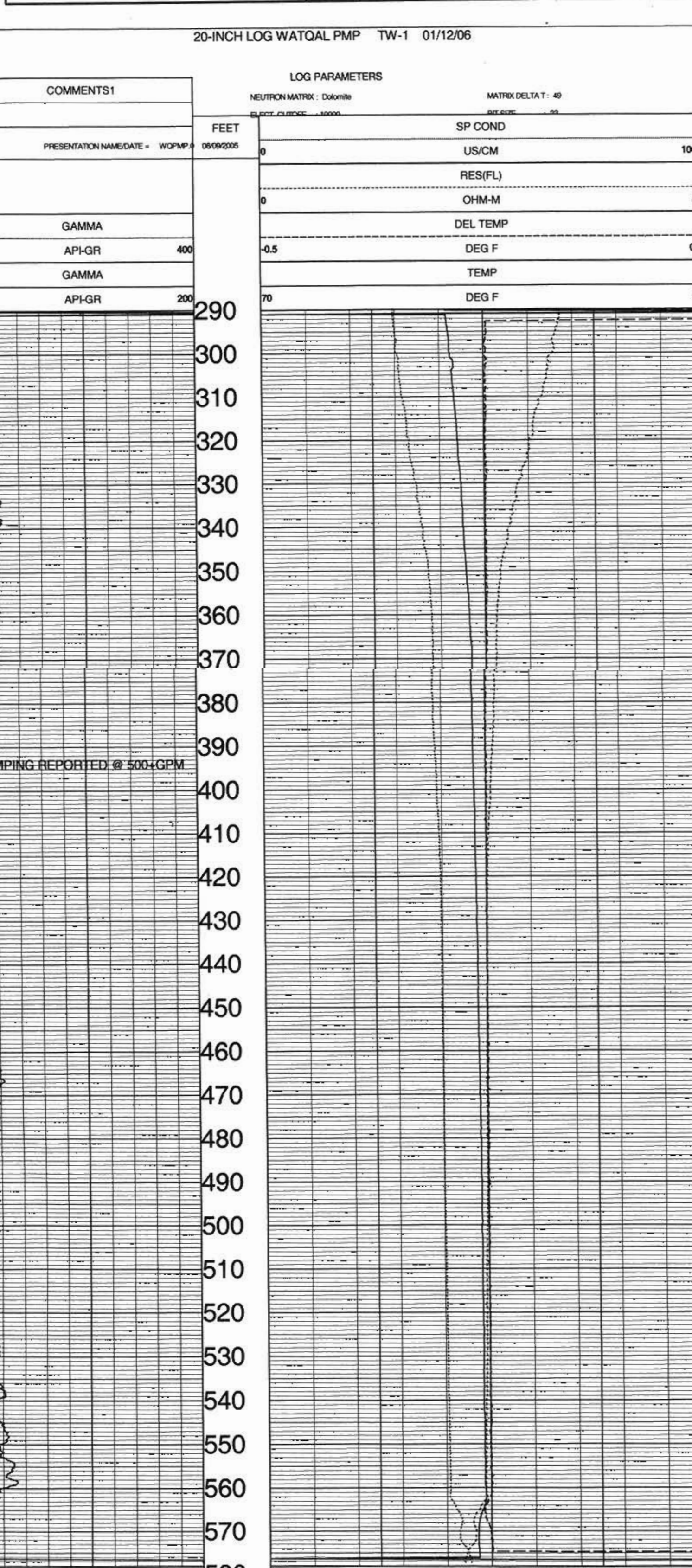
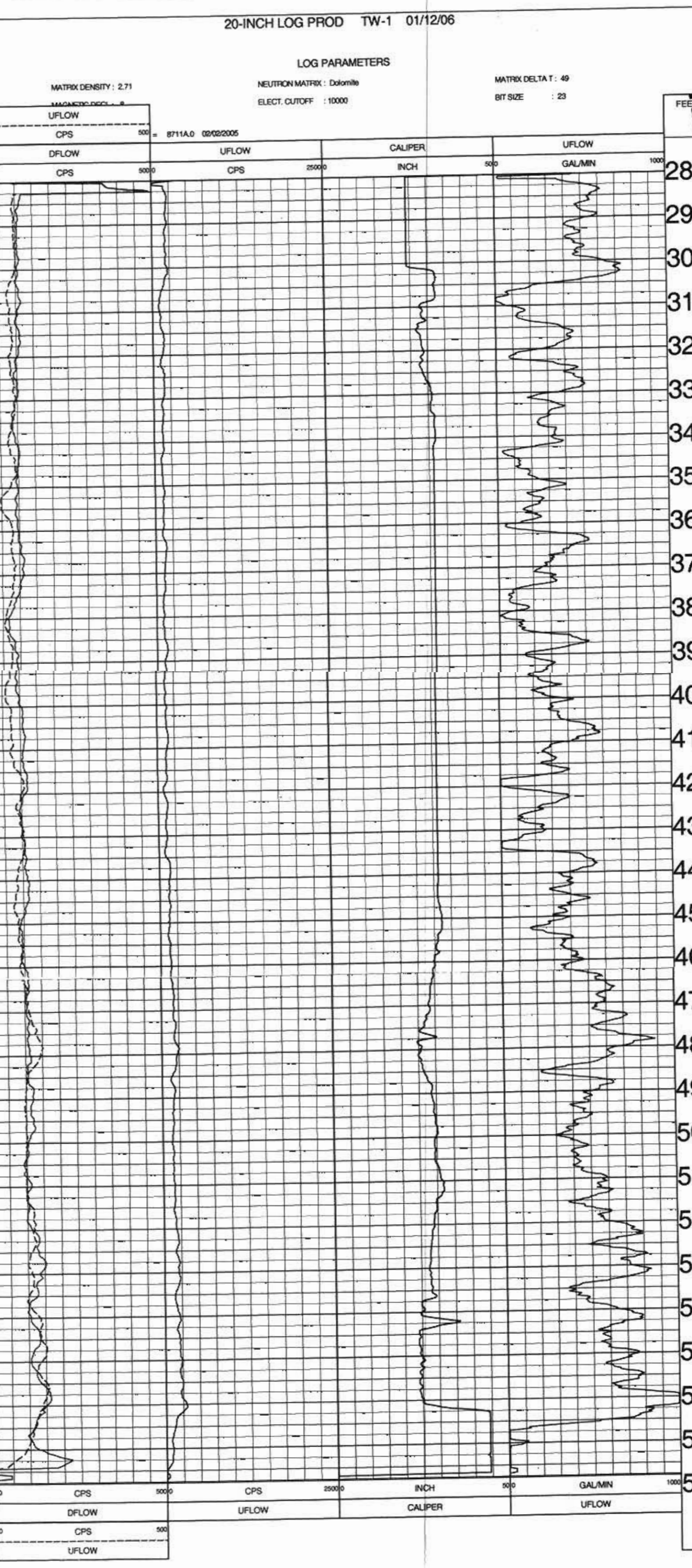
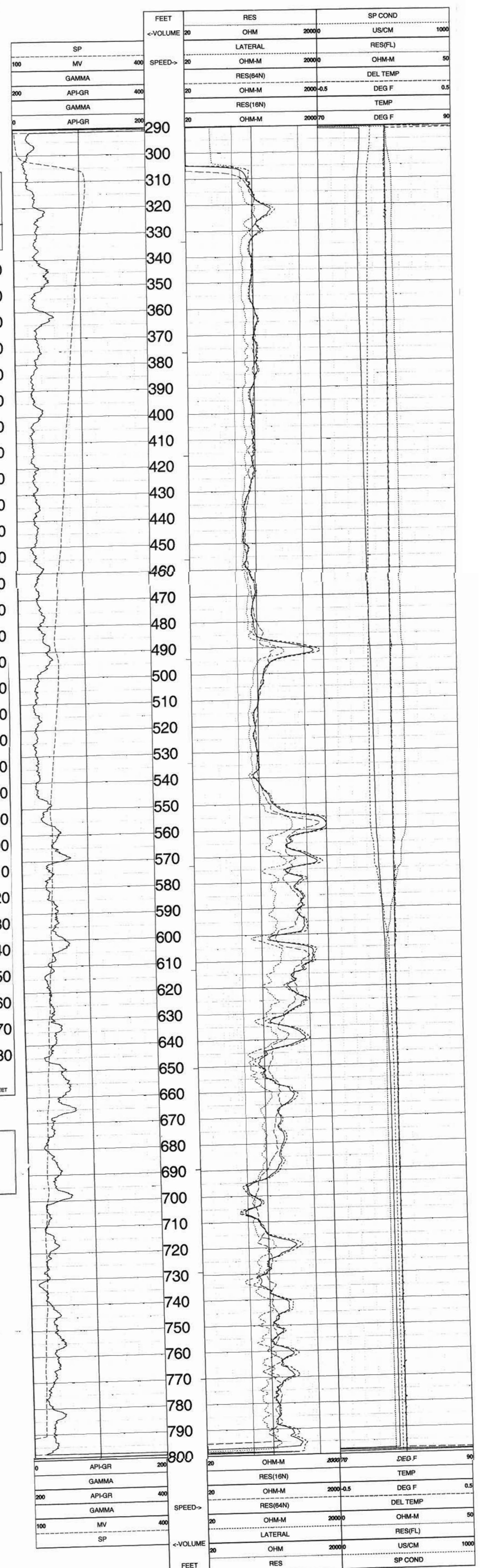
ELEVATION OF : ELEVATION OF : ELEVATION OF :

LOG MEASURED FROM : CASE

ELEVATION OF : ELEVATION OF : ELEVATION OF :

LOG MEASURED FROM : CASE

ELEVATION OF : ELEVATION OF : ELEVATION OF :



TOOL CALIBRATION TW-1 01/12/06 10:51

TOOL #044A TM VERSION 0 SERIAL NUMBER 1039

DATE	TIME	SENSOR	STANDARD	RESPONSE
Apr/05	18:50:01	GAMMA	30.000	103.00
Apr/05	18:50:01	UFLOW	60.000	114.00
Apr/05	18:50:34	UFLOW	30.000	106.00
Apr/05	18:50:34	UFLOW	50.000	118.00

TOOL CALIBRATION TW-1 01/12/06 12:58

TOOL #044A TM VERSION 0 SERIAL NUMBER 1039

DATE	TIME	SENSOR	STANDARD	RESPONSE
Sep/09	18:44:55	GAMMA	Default	Default
Sep/09	18:44:55	GAMMA	Default	Default
Jan/05	19:47:29	RES(FL)	1.350	11555.00
Jan/05	19:47:29	RES(FL)	57.800	47219.00
May/25	18:53:00	SP	5.000	80212.00
May/25	18:53:00	SP	378.000	112913.00
Oct/28	15:07:23	RES(16N)	0.000	3836.00
Oct/28	15:07:23	RES(16N)	1999.000	103037.00
Oct/28	15:08:52	RES(64N)	0.000	3990.00
Oct/28	15:08:52	RES(64N)	1999.000	102513.00
Jan/05	18:53:48	TEMP	60.000	204868.00
Jan/05	18:53:48	TEMP	90.200	178965.00
May/25	18:52:49	RES	0.000	10084.00
May/25	18:52:49	RES	988.000	68922.00

TOOL CALIBRATION TW-1 01/12/06 09:38

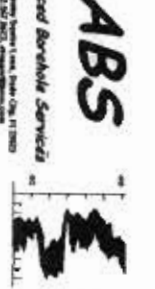
TOOL #044A TM VERSION 0 SERIAL NUMBER 1039

DATE	TIME	SENSOR	STANDARD	RESPONSE
Sep/09	18:44:55	GAMMA	Default	Default
Sep/09	18:44:55	GAMMA	Default	Default
Jan/05	19:47:29	RES(FL)	1.350	11555.00
Jan/05	19:47:29	RES(FL)	57.800	47219.00
May/25	18:53:00	SP	0.000	80212.00
May/25	18:53:00	SP	378.000	112913.00
Oct/28	15:07:23	RES(16N)	0.000	3836.00
Oct/28	15:07:23	RES(16N)	1999.000	103037.00
Oct/28	15:08:52	RES(64N)	0.000	3990.00
Oct/28	15:08:52	RES(64N)	1999.000	102513.00
Jan/05	18:53:48	TEMP	60.000	204868.00
Jan/05	18:53:48	TEMP	90.200	178965.00
May/25	18:52:49	RES	0.000	10084.00
May/25	18:52:49	RES	988.000	68922.00

TOOL CALIBRATION MM#1 07/08/05 11:50

TOOL #044A TM VERSION 0 SERIAL NUMBER 1039

DATE	TIME	SENSOR	STANDARD	RESPONSE
Sep/09	18:44:55	GAMMA	Default	Default
Sep/09	18:44:55	GAMMA	Default	Default
Jan/05	13:24:09	RES(FL)	1.700	14973.00
Jan/05	13:24:09	RES(FL)	44.400	68163.00
May/25	18:53:00	SP	0.000	80212.00
May/25	18:53:00	SP	378.000	112913.00
May/25	18:52:29	RES(16N)	0.000	3685.00
May/25	18:52:29	RES(16N)	1999.000	103984.00
May/25	18:52:29	RES(64N)	0.000	3685.00
May/25	18:52:29	RES(64N)	1999.000	103984.00
Jun/01	00:05:25	TEMP	47.000	218935.00
Jun/01	00:05:25	TEMP	100.400	188730.00
May/25	18:52:49	RES	0.000	10084.00
May/25	18:52:49	RES	988.000	68922.00



GAMMA RAY (API)-CALIPER

MM#1

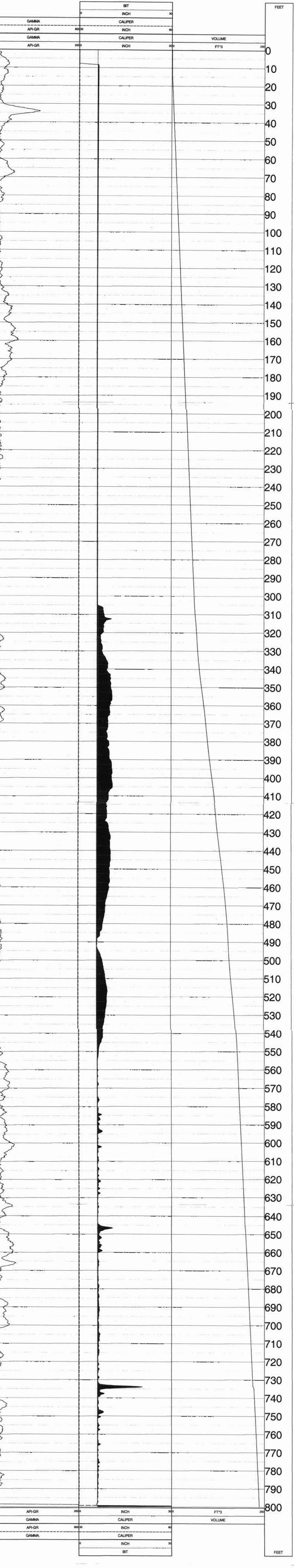
COMPANY : DAVID CANNON DRILLING
 WELL : MW2
 FIELD : C/W COMBEE WTP
 COUNTY : FOLK
 STATE : FLORIDA

LOCATION : None
 SECTION : None
 TOWNSHIP : None
 RANGE : None
 APN NO. :
 UNIQUE WELL ID. :

PERMANENT DATUM : None
 LOG MEASURED FROM CASE :
 DR. MEASURED FROM CASE :
 DATE : 08/03/05

DEPTH/DHLLER : 790
 BIT SIZE : 67
 LOG TOP : 3.00
 LOG BOTTOM : 796.25
 CASING OD :
 CASING BOTTOM :
 Casing Type : STEEL
 SPOURAGE FLUID :
 RH TEMPERATURE :
 MUD WEIGHT :
 MUD VISCOSITY :
 WITNESSED BY :
 RECORDED BY :
 REMARKS 1 :
 REMARKS 2 :

ELEVATION: None
 ELEVATION OF: None
 ELEVATION Q.L.: None



TOOL CALIBRATION MW#1 07/08/05 11:12
TOOL: 9074A1 TM VERSION: 0
SERIAL NUMBER: 857

DATE	TIME	SENSOR	STANDARD	RESPONSE
Sep02.03	20:50:58	GAMMA	Default	180.000 [CPS]
Sep02.03	17:50:58	GAMMA	180.000 [API-GR]	205.00 [CPS]
Dec13.00	22:18:45	CALIPER	Default	5.800 [CPS]
Dec13.00	22:18:45	CALIPER	Default	124733.00 [CPS]
Jun02.05	15:07:35	CALIPERX	5.800 [INCH]	103938.00 [CPS]
Jun02.05	15:07:35	CALIPERX	17.200 [INCH]	Default [CPS]
Dec13.00	22:18:45	CALIPERX	Default	Default [CPS]

COMPANY : DAVID CANNON DRILLING
 WELL : MW2
 FIELD : C/W COMBEE WTP
 COUNTY : FOLK
 STATE : FLORIDA

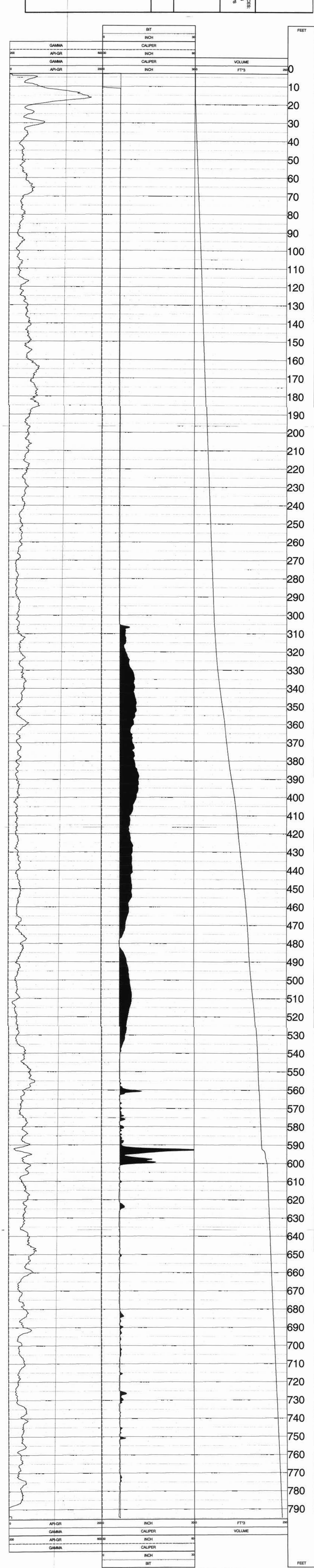
GAMMA RAY (API)-CALIPER

MM#2

LOCATION : None
 SECTION : None
 TOWNSHIP : None
 RANGE : None
 APN NO. :
 UNIQUE WELL ID. :

PERMANENT DATUM : None
 LOG MEASURED FROM CASE :
 DR. MEASURED FROM CASE :
 DATE : 08/03/05

DEPTH/DHLLER : 790
 BIT SIZE : 67
 LOG TOP : 3.00
 LOG BOTTOM : 796.25
 CASING OD :
 CASING BOTTOM :
 Casing Type : STEEL
 SPOURAGE FLUID :
 RH TEMPERATURE :
 MUD WEIGHT :
 MUD VISCOSITY :
 WITNESSED BY :
 RECORDED BY :
 REMARKS 1 :
 REMARKS 2 :



TOOL CALIBRATION MW#2 08/04/05 10:05
TOOL: 9074A1 TM VERSION: 0
SERIAL NUMBER: 857

DATE	TIME	SENSOR	STANDARD	RESPONSE
Sep02.03	20:50:58	GAMMA	Default	180.000 [CPS]
Sep02.03	17:50:58	GAMMA	180.000 [API-GR]	205.00 [CPS]
Dec13.00	22:18:45	CALIPER	Default	5.800 [CPS]
Dec13.00	22:18:45	CALIPER	Default	124733.00 [CPS]
Jun02.05	15:07:35	CALIPERX	5.800 [INCH]	103938.00 [CPS]
Jun02.05	15:07:35	CALIPERX	17.200 [INCH]	Default [CPS]
Dec13.00	22:18:45	CALIPERX	Default	Default [CPS]

ABS **PRODUCTION-STATIC-PUMPING**

WELL: MM#1
WELP: C/W COMBE W/P
COUNTY: POLK
STATE: IOWA
TOWNSHIP: NEW
SECTION: 36
RANGE: 23
APN: 150700000000000000

LOG TOP: 800.00
LOG BOTTOM: 800.25
CASING OD: 3.00
CASING WT: 2.34
CASPING TYPE: STEEL
CASPING TYPE: STEEL
CASPING TYPE: STEEL
CASPING TYPE: STEEL
CASPING TYPE: STEEL
CASPING TYPE: STEEL
CASPING TYPE: STEEL
CASPING TYPE: STEEL
CASPING TYPE: STEEL
CASPING TYPE: STEEL
CASPING TYPE: STEEL
CASPING TYPE: STEEL

LOG TOP: 800.00
LOG BOTTOM: 800.25
CASING OD: 3.00
CASING WT: 2.34
CASPING TYPE: STEEL
CASPING TYPE: STEEL
CASPING TYPE: STEEL
CASPING TYPE: STEEL
CASPING TYPE: STEEL
CASPING TYPE: STEEL
CASPING TYPE: STEEL
CASPING TYPE: STEEL
CASPING TYPE: STEEL
CASPING TYPE: STEEL
CASPING TYPE: STEEL
CASPING TYPE: STEEL

ABS **COMBINATION LOG STATIC WELL MM#2**

WELL: MM#2
WELP: C/W COMBE W/P
COUNTY: POLK
STATE: IOWA
TOWNSHIP: NEW
SECTION: 36
RANGE: 23
APN: 150700000000000000

LOG TOP: 800.00
LOG BOTTOM: 800.25
CASING OD: 3.00
CASING WT: 2.34
CASPING TYPE: STEEL
CASPING TYPE: STEEL
CASPING TYPE: STEEL
CASPING TYPE: STEEL
CASPING TYPE: STEEL
CASPING TYPE: STEEL
CASPING TYPE: STEEL
CASPING TYPE: STEEL
CASPING TYPE: STEEL
CASPING TYPE: STEEL
CASPING TYPE: STEEL
CASPING TYPE: STEEL

LOG TOP: 800.00
LOG BOTTOM: 800.25
CASING OD: 3.00
CASING WT: 2.34
CASPING TYPE: STEEL
CASPING TYPE: STEEL
CASPING TYPE: STEEL
CASPING TYPE: STEEL
CASPING TYPE: STEEL
CASPING TYPE: STEEL
CASPING TYPE: STEEL
CASPING TYPE: STEEL
CASPING TYPE: STEEL
CASPING TYPE: STEEL
CASPING TYPE: STEEL
CASPING TYPE: STEEL

ABS **PRODUCTION-STATIC-PUMPING**

WELL: MM#2
WELP: C/W COMBE W/P
COUNTY: POLK
STATE: IOWA
TOWNSHIP: NEW
SECTION: 36
RANGE: 23
APN: 150700000000000000

LOG TOP: 800.00
LOG BOTTOM: 800.25
CASING OD: 3.00
CASING WT: 2.34
CASPING TYPE: STEEL
CASPING TYPE: STEEL
CASPING TYPE: STEEL
CASPING TYPE: STEEL
CASPING TYPE: STEEL
CASPING TYPE: STEEL
CASPING TYPE: STEEL
CASPING TYPE: STEEL
CASPING TYPE: STEEL
CASPING TYPE: STEEL
CASPING TYPE: STEEL
CASPING TYPE: STEEL

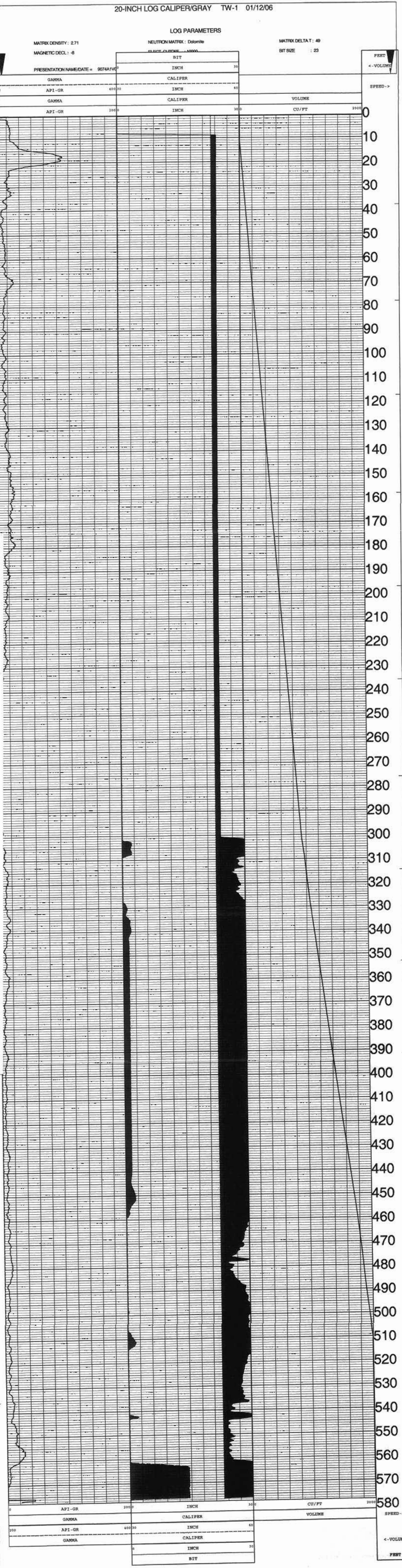
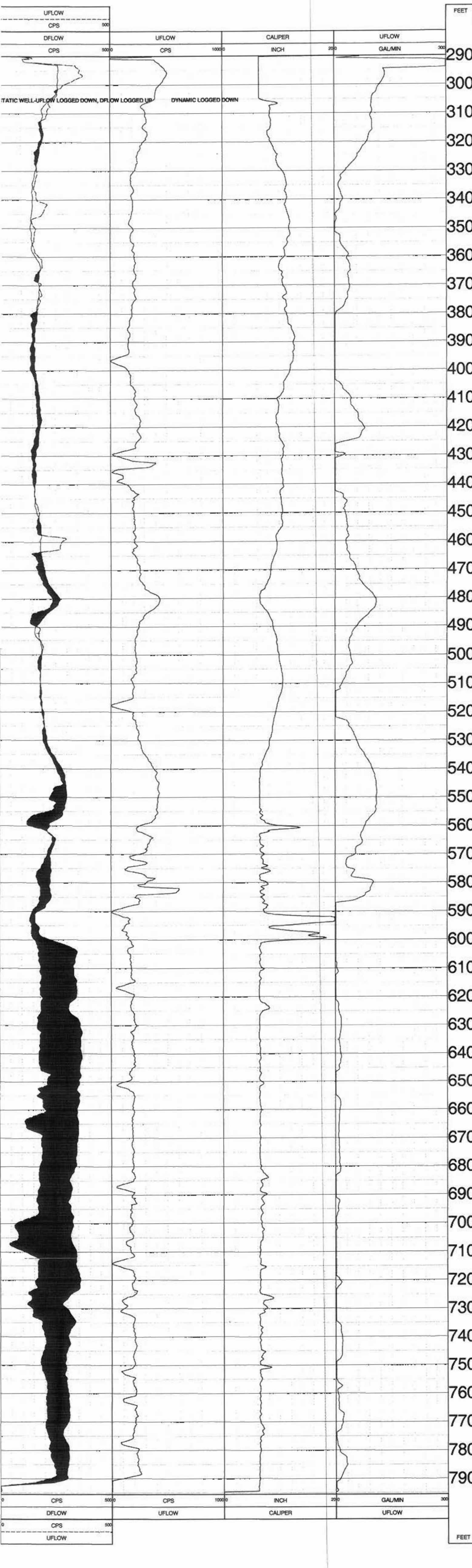
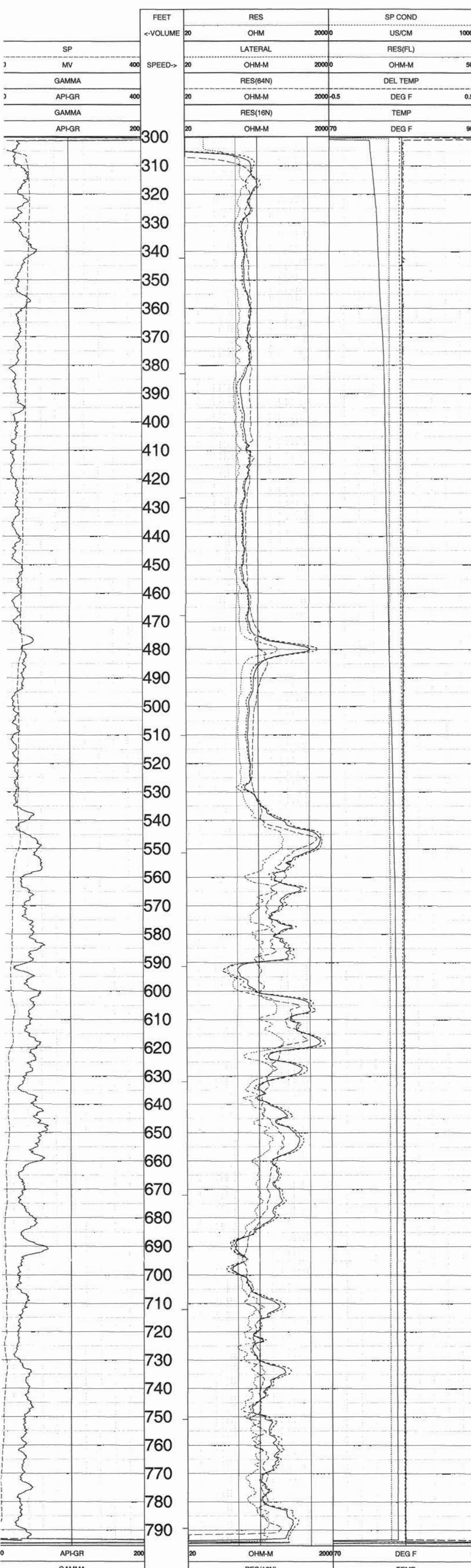
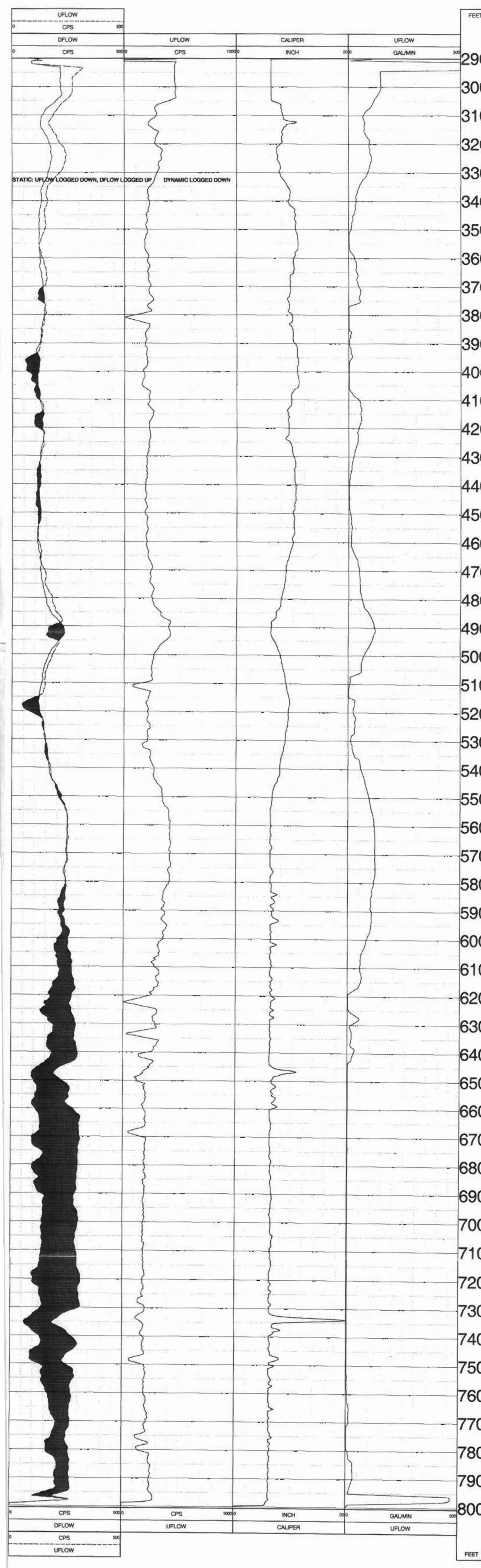
LOG TOP: 800.00
LOG BOTTOM: 800.25
CASING OD: 3.00
CASING WT: 2.34
CASPING TYPE: STEEL
CASPING TYPE: STEEL
CASPING TYPE: STEEL
CASPING TYPE: STEEL
CASPING TYPE: STEEL
CASPING TYPE: STEEL
CASPING TYPE: STEEL
CASPING TYPE: STEEL
CASPING TYPE: STEEL
CASPING TYPE: STEEL
CASPING TYPE: STEEL
CASPING TYPE: STEEL

ABS **GAMMA RAY (API) CALIPER BH VOLUME TW-1**

WELL: TW-1
WELP: CALIPER ROAD W/P
COUNTY: POLK
STATE: IOWA
TOWNSHIP: NEW
SECTION: 36
RANGE: 23
APN: 150700000000000000

LOG TOP: 800.00
LOG BOTTOM: 800.25
CASING OD: 3.00
CASING WT: 2.34
CASPING TYPE: STEEL
CASPING TYPE: STEEL
CASPING TYPE: STEEL
CASPING TYPE: STEEL
CASPING TYPE: STEEL
CASPING TYPE: STEEL
CASPING TYPE: STEEL
CASPING TYPE: STEEL
CASPING TYPE: STEEL
CASPING TYPE: STEEL
CASPING TYPE: STEEL
CASPING TYPE: STEEL

LOG TOP: 800.00
LOG BOTTOM: 800.25
CASING OD: 3.00
CASING WT: 2.34
CASPING TYPE: STEEL
CASPING TYPE: STEEL
CASPING TYPE: STEEL
CASPING TYPE: STEEL
CASPING TYPE: STEEL
CASPING TYPE: STEEL
CASPING TYPE: STEEL
CASPING TYPE: STEEL
CASPING TYPE: STEEL
CASPING TYPE: STEEL
CASPING TYPE: STEEL
CASPING TYPE: STEEL



TOOL CALIBRATION MM#1 01/06/05 1223
TOOL: 8044A TM VERSION 0
SERIAL NUMBER 227

DATE	TIME	SENSOR	STANDARD	RESPONSE
JUN04	20:47:33	DFLOW	30.000	71.00
JUN04	20:47:33	DFLOW	120.000	287.26
FEB03	18:00:53	UFLOW	30.000	139.00
FEB03	18:00:53	UFLOW	30.000	237.00

TOOL CALIBRATION MM#2 06/06/05 1122
TOOL: 8044A TM VERSION 0
SERIAL NUMBER 227

DATE	TIME	SENSOR	STANDARD	RESPONSE
JUN04	20:47:33	DFLOW	30.000	71.00
JUN04	20:47:33	DFLOW	120.000	287.26
FEB03	18:00:53	UFLOW	30.000	139.00
FEB03	18:00:53	UFLOW	30.000	237.00

TOOL CALIBRATION MM#2 06/06/05 1043
TOOL: 8044A TM VERSION 0
SERIAL NUMBER 1039

DATE	TIME	SENSOR	STANDARD	RESPONSE
Sep09 04	16:44:55	GAMMA	Default	Default
Sep09 04	16:44:55	GAMMA	Default	Default
Jun03 05	13:24:09	RES(FL)	44.400	14973.00
Jun03 05	13:24:09	RES(FL)	44.400	39743.00
May25 05	18:53:00	SP	0.000	80212.00
May25 05	18:53:00	SP	378.000	11253.00
May25 05	18:52:29	RES(16N)	0.000	3943.00
May25 05	18:52:29	RES(16N)	1990.000	10394.00
May25 05	18:52:29	RES(64N)	0.000	3988.00
May25 05	18:52:29	RES(64N)	1990.000	10298.00
Jun01 05	00:05:35	TEMP	47.000	21835.00
Jun01 05	00:05:35	TEMP	100.400	168730.00
May25 05	18:52:49	RES	0.000	10094.00
May25 05	18:52:49	RES	988.000	58922.00