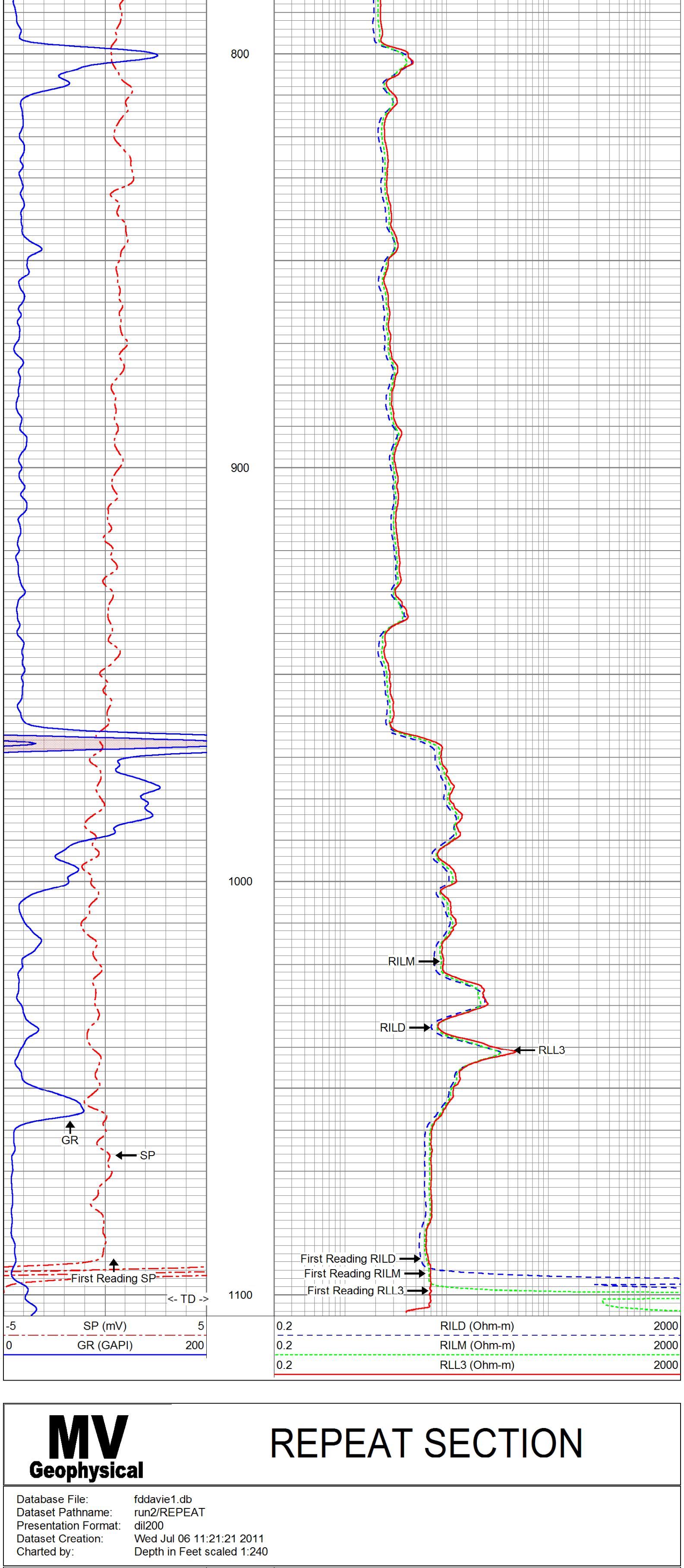
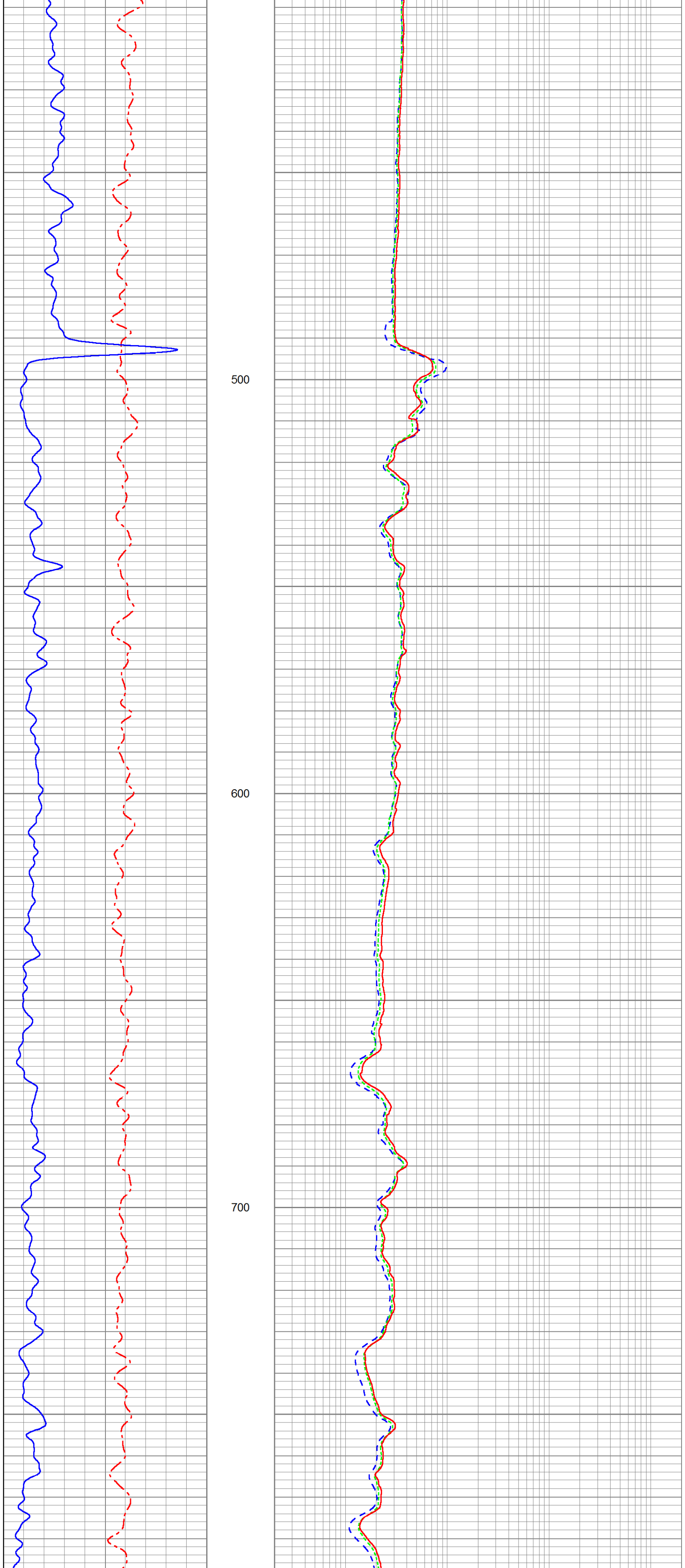
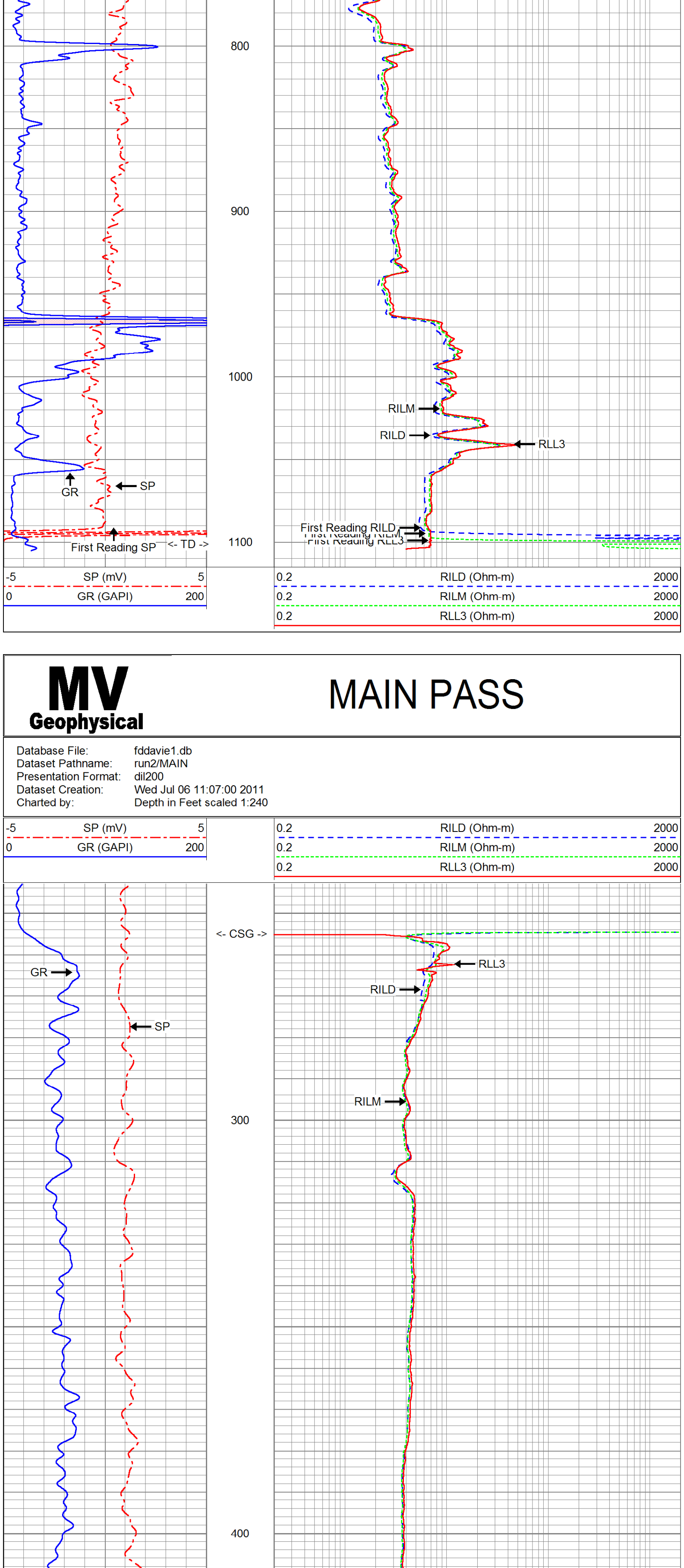
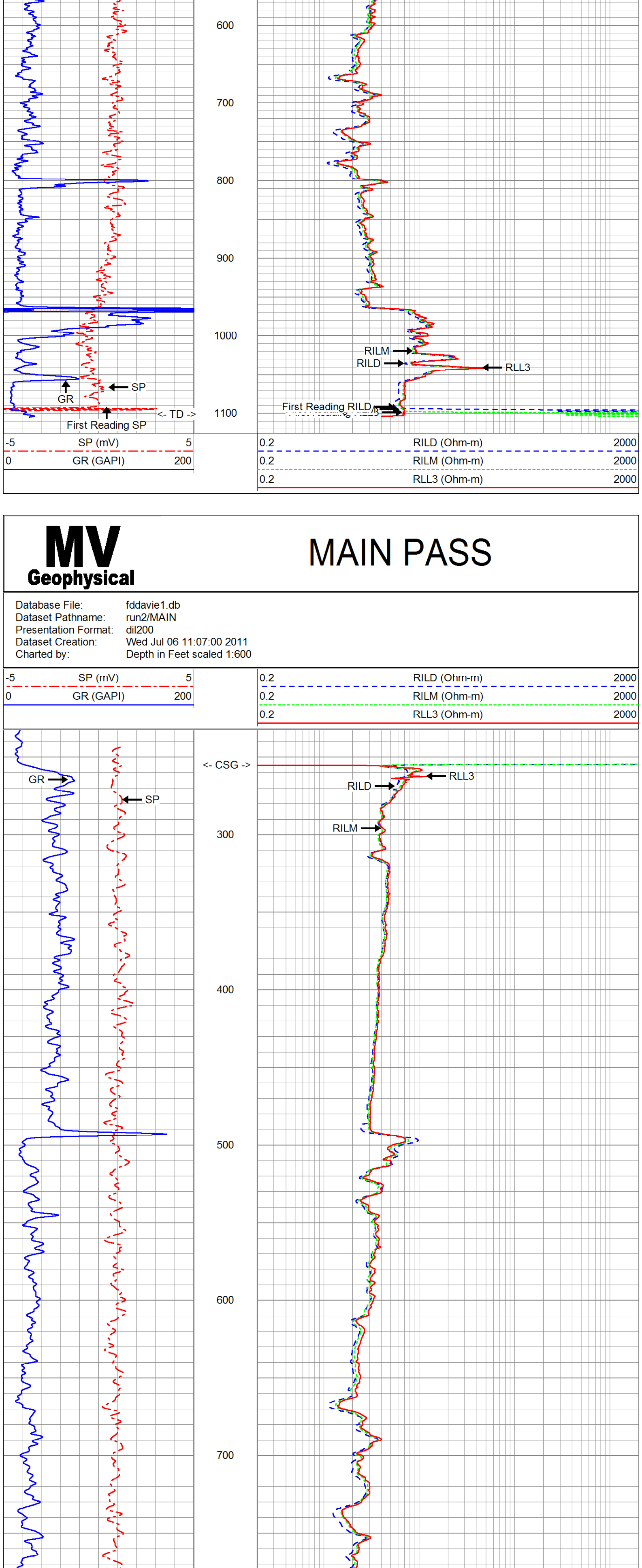


Company Florida Design Drilling Corp.									
Well PW-1									
Field Davie									
County Broward									
State/Prov Florida									
Location Production Wellfield Expansion									
Town of Davie - U-F Test Site									
Log Measured From ASCOM									
Drilling Measured From G.L.									
Date Run 6-JUL-2011									
Depth (feet) 1100'									
Depth (meters) 335.30									
Top Log Interval 250'									
Open Hole Size 11.875"									
Density/Viscosity n/a									
Max. Recorded Temp. n/a									
Time Well Ready 10:00/7/62011									
Time Logged on Bottom 12:00/7/62011									
Recorded By S. M. Miller									
Location Ft. Myers									
Run Number 81									
Run Date 11/8/5'									
Borehole Record 255' from 2100'									
Size 1100'									
Weight 255'									
From 10'									
To 255'									
Bottom 255'									
Casing Record 255'									
Production String 30'									
Production String 0.375" WT									
Surface 255'									
Bottom 255'									
Invoice No. 2011688									
***** Print Form *****									

All interpretations are options based on inferences from electrical or other measurements and we cannot and do not guarantee the accuracy or correctness of any interpretation, and we shall not, except in the case of gross or willful negligence on our part, be liable or responsible for any loss, costs, damages, or expenses incurred or sustained by anyone resulting from any interpretation made by any of our officers, agents or employees. These interpretations are also subject to our general terms and conditions set out in our current Price Schedule.

Comments

Rm=4.237 ohm-m @ 87.4 degF
Rmf=3.971 ohm-m @ 86.7 degF
Rmc=6.327 ohm-m @ 85.5 degF



Database File: fddavie1.db									
Dataset Pathname: run2/REPEAT									
Presentation Format: di200									
Dataset Creation: Wed Jul 06 11:21:21 2011									
Charted by: Depth in Feet scaled 1:240									
Sensor									
Offset (ft)									
Schematic									
Description									
Len (ft)									
OD (in)									
WT (lb)									
CIL-D 10.60									
SP 10.60									
CIL-M 6.80									
RLL3 1.70									
Dataset: fddavie1 db									
Total Length: 20.90 ft									
Total Weight: 345.00 lb									
O.D. 4.00 in									