



X-Y CALIPER GAMMA RAY LOG

Company	FLORIDA DESIGN DRILLING CORP.	
Well	PW-2	
Field	DAVIE	
County	BROWARD	
State	FLORIDA	
Company	FLORIDA DESIGN DRILLING CORP.	
Well	PW-2	
Field	DAVIE	
County	BROWARD	
State	FLORIDA	
Location:	API #:	Other Services
PRODUCTION WELLFIELD EXPANSION		SEE
TOWN OF DAVIE - UF TEST SITE		COMMENTS
SEC	TWP	RGE
Permanent Datum	Elevation	Elevation
Log Measured From		K.B.
Drilling Measured From		D.F.
		G.L.

Date	14-SEP-11-2011			
Run Number	ONE			
Depth Driller	967'			
Depth Logger	969'			
Bottom Logged Interval	969'			
Top Log Interval	CASING			
Open Hole Size	28"			
Type Fluid	MUD			
Density / Viscosity	NA			
Max. Recorded Temp.	NA			
Estimated Cement Top	SURFACE			
Time Well Ready	ON ARRIVAL			
Time Logger on Bottom	0000			
Equipment Number	VA-203			
Location	JUPITER			
Recorded By	LEE			
Witnessed By	D. RICHARD			
Borehole Record		Borehole Record		
Run Number	Bit	From	To	Run Number
ONE	28"	CASING	967'	
Casing Record	Size	Wgt/Ft	Top	Bottom
Surface String	30"	.375 W.T	SURFACE	250"
Prot. String				
Production String				
Liner				

<<< Fold Here >>>

All interpretations are opinions based on inferences from electrical or other measurements and we cannot and do not guarantee the accuracy or correctness of any interpretation, and we shall not, except in the case of gross or willful negligence on our part, be liable or responsible for any loss, costs, damages, or expenses incurred or sustained by anyone resulting from any interpretation made by any of our officers, agents or employees. These interpretations are also subject to our general terms and conditions set out in our current Price Schedule.

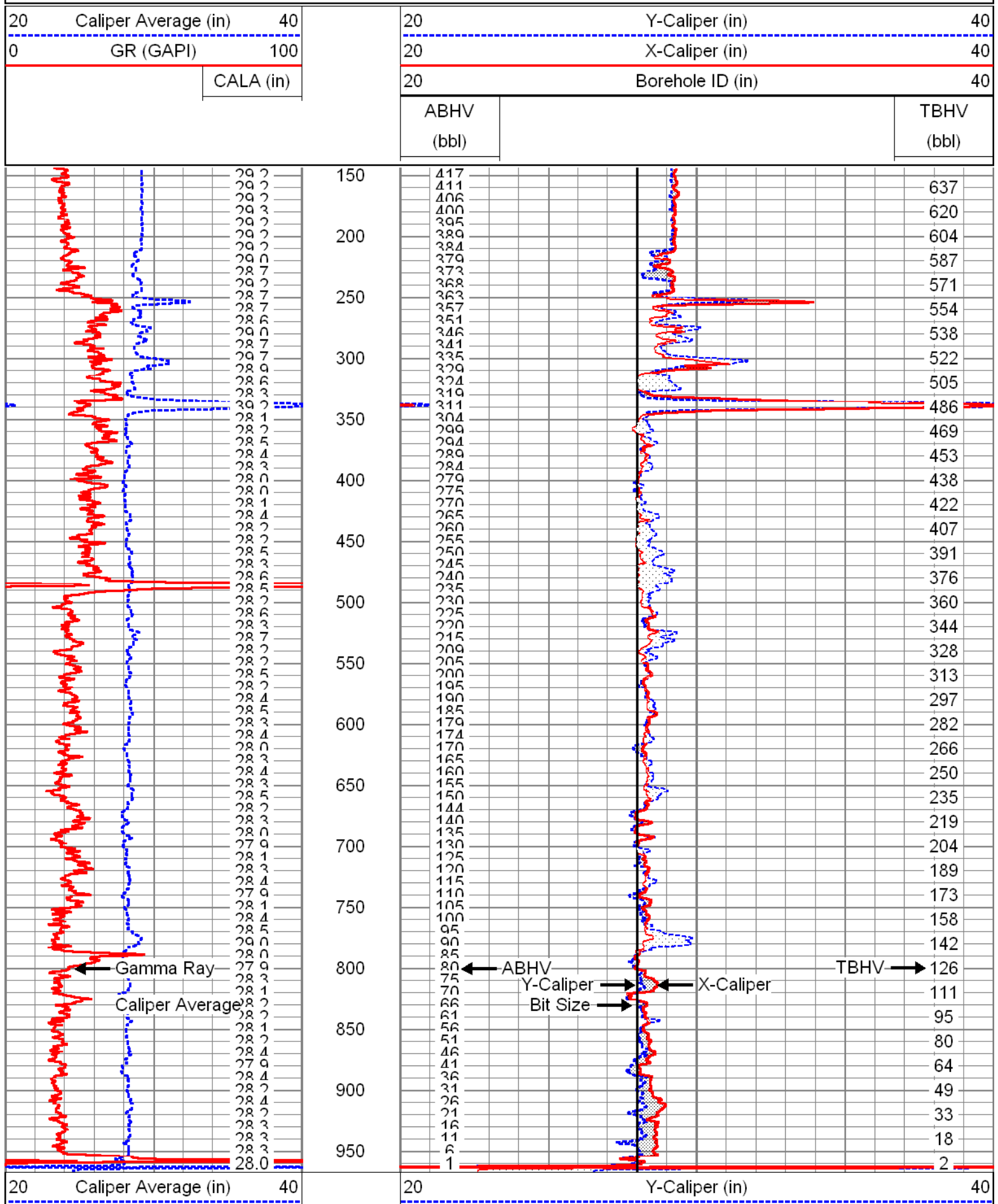
Comments

ABHV COMPUTED WITH 17" FRP CASING
(BBLs)



MAIN PASS

ENTERPRISES, INC.
Database File: daviepw2.db
Dataset Pathname: XYCMP
Presentation Format: xyc
Dataset Creation: Wed Sep 14 08:06:37 2011 by Calc Open-Cased 071220
Charted by: Depth in Feet scaled 1:1200



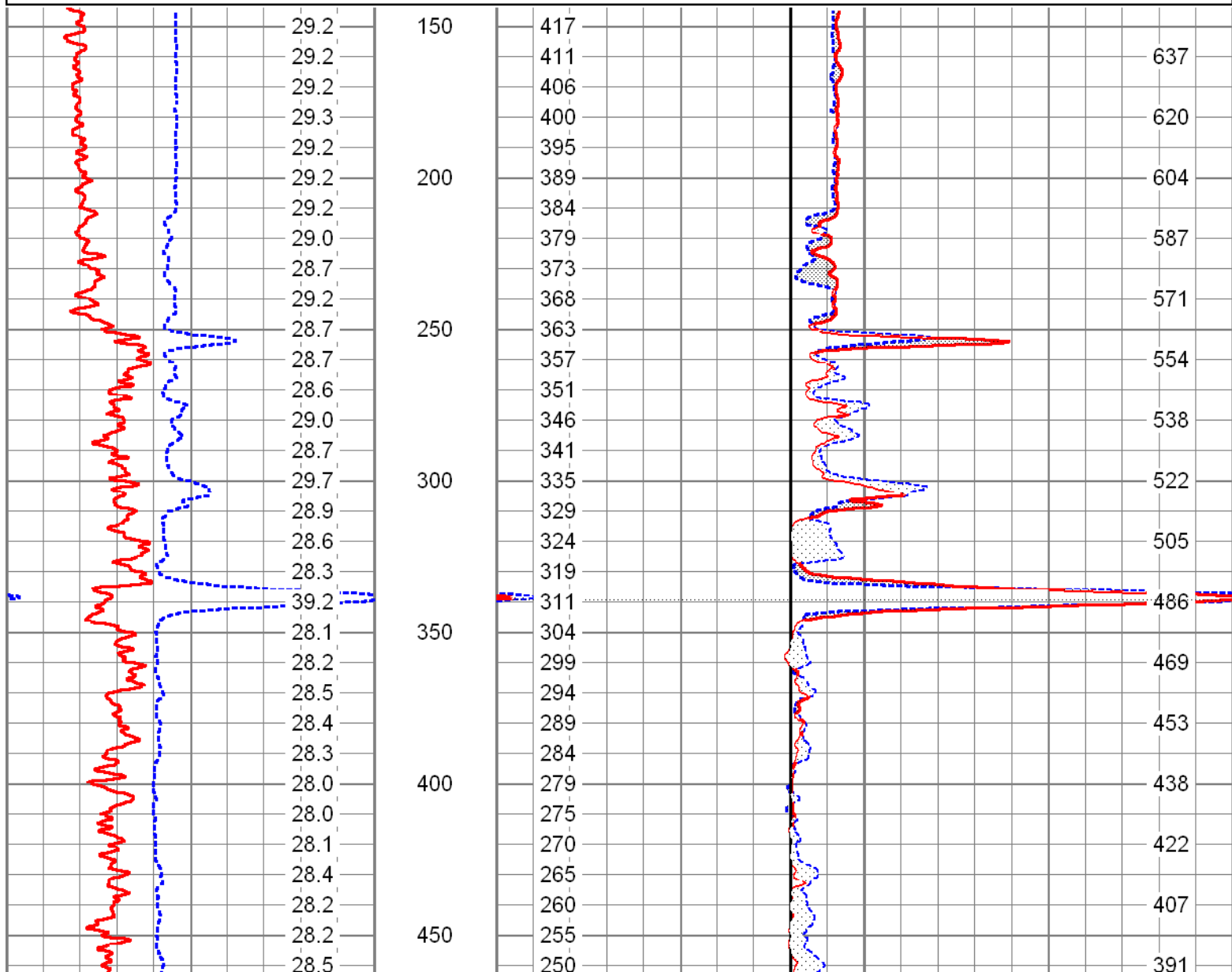
0	GR (GAPI)	100	20	X-Caliper (in)	40
	CALA (in)		20	Borehole ID (in)	40
			ABHV		TBHV
			(bbl)		(bbl)

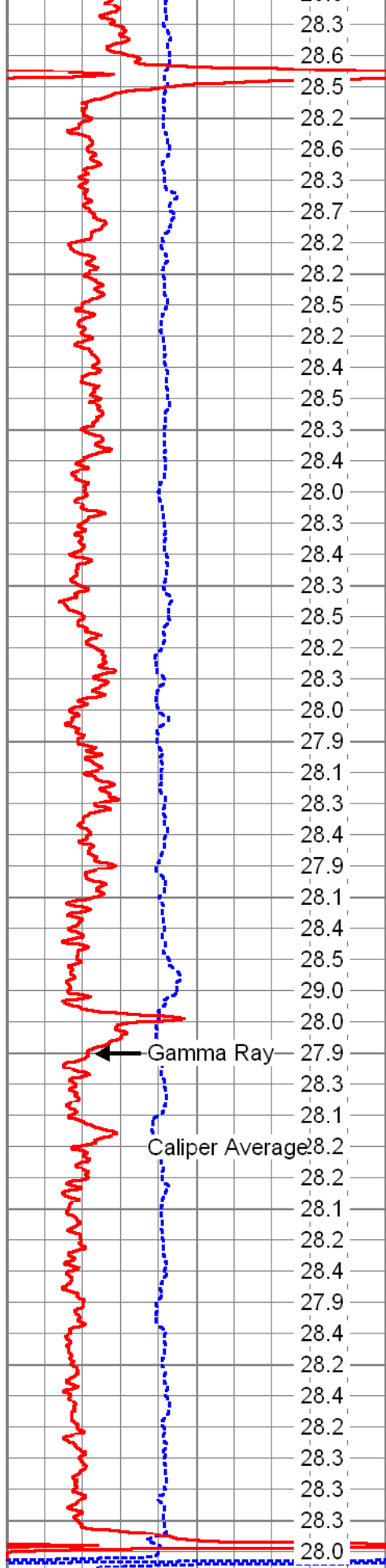


MAIN PASS

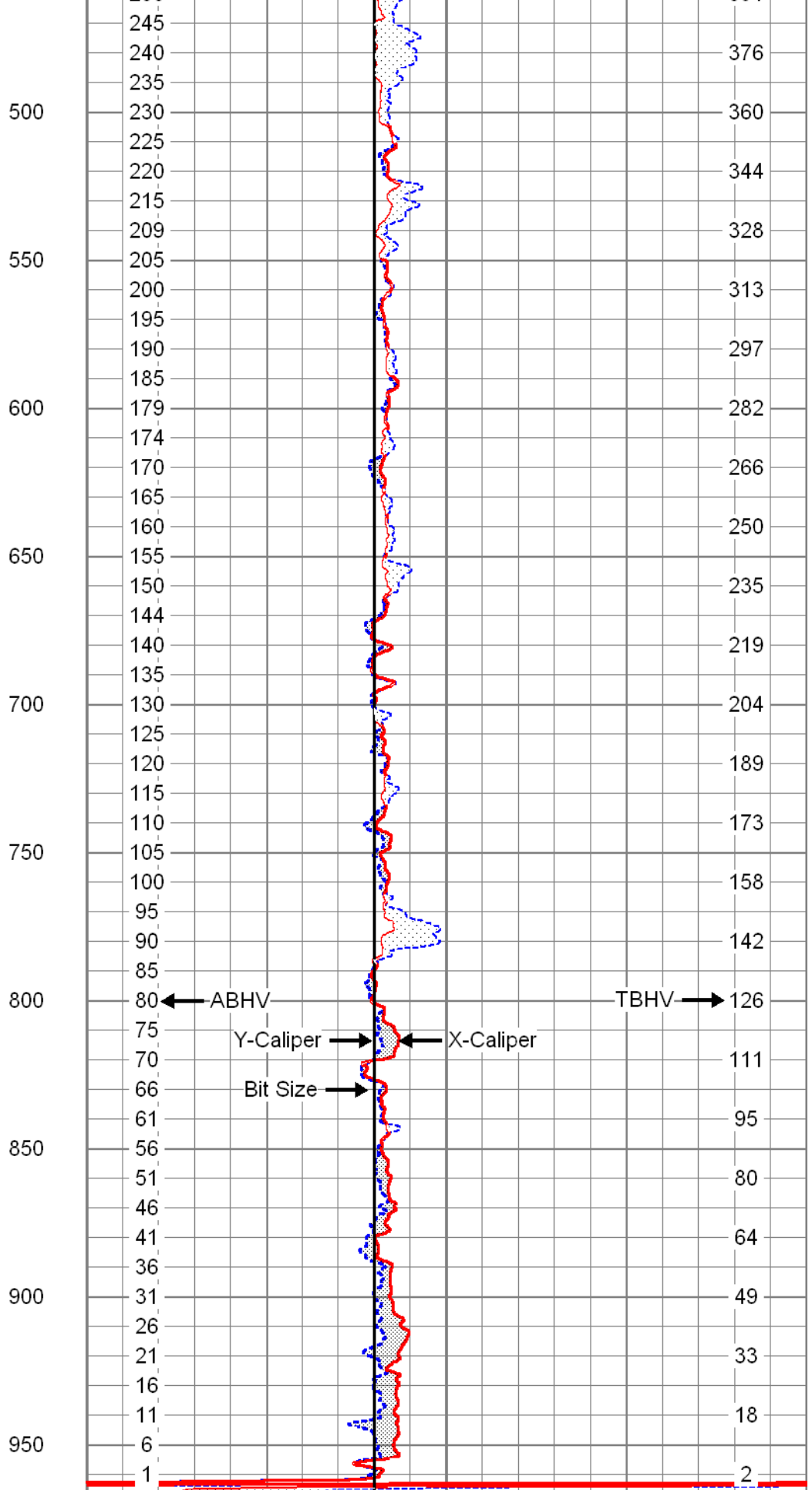
Database File: daviepw2.db
 Dataset Pathname: XYCMP
 Presentation Format: xyc
 Dataset Creation: Wed Sep 14 08:06:37 2011 by Calc Open-Cased 071220
 Charted by: Depth in Feet scaled 1:600

20	Caliper Average (in)	40	20	Y-Caliper (in)	40
0	GR (GAPI)	100	20	X-Caliper (in)	40
	CALA (in)		20	Borehole ID (in)	40
			ABHV		TBHV
			(bbl)		(bbl)





20	Caliper Average (in)	40
0	GR (GAPI)	100
	CALA (in)	



20	Y-Caliper (in)	40
20	X-Caliper (in)	40
20	Borehole ID (in)	40

ABHV		TBHV
------	--	------

(bbl)

(bbl)



MAIN PASS

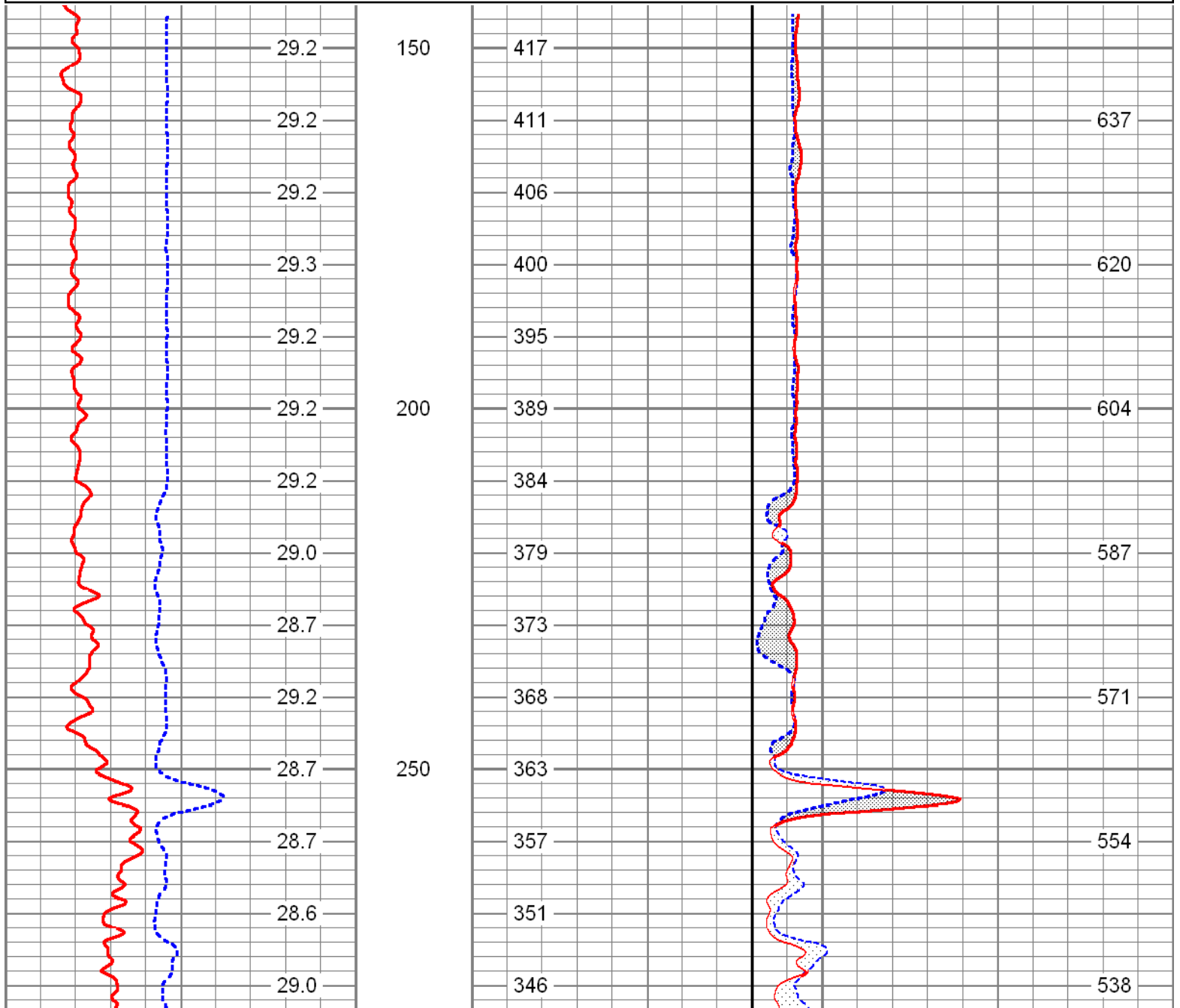
Database File: daviepw2.db
 Dataset Pathname: XYCMP
 Presentation Format: xyc
 Dataset Creation: Wed Sep 14 08:06:37 2011 by Calc Open-Cased 071220
 Charted by: Depth in Feet scaled 1:240

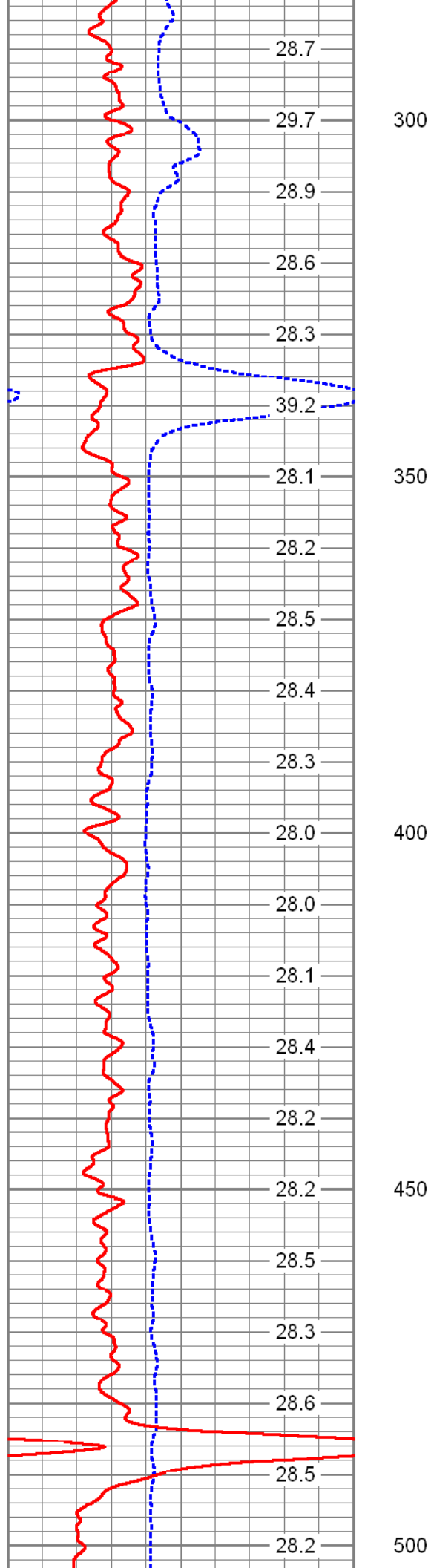
20	Caliper Average (in)	40
0	GR (GAPI)	100
	CALA (in)	

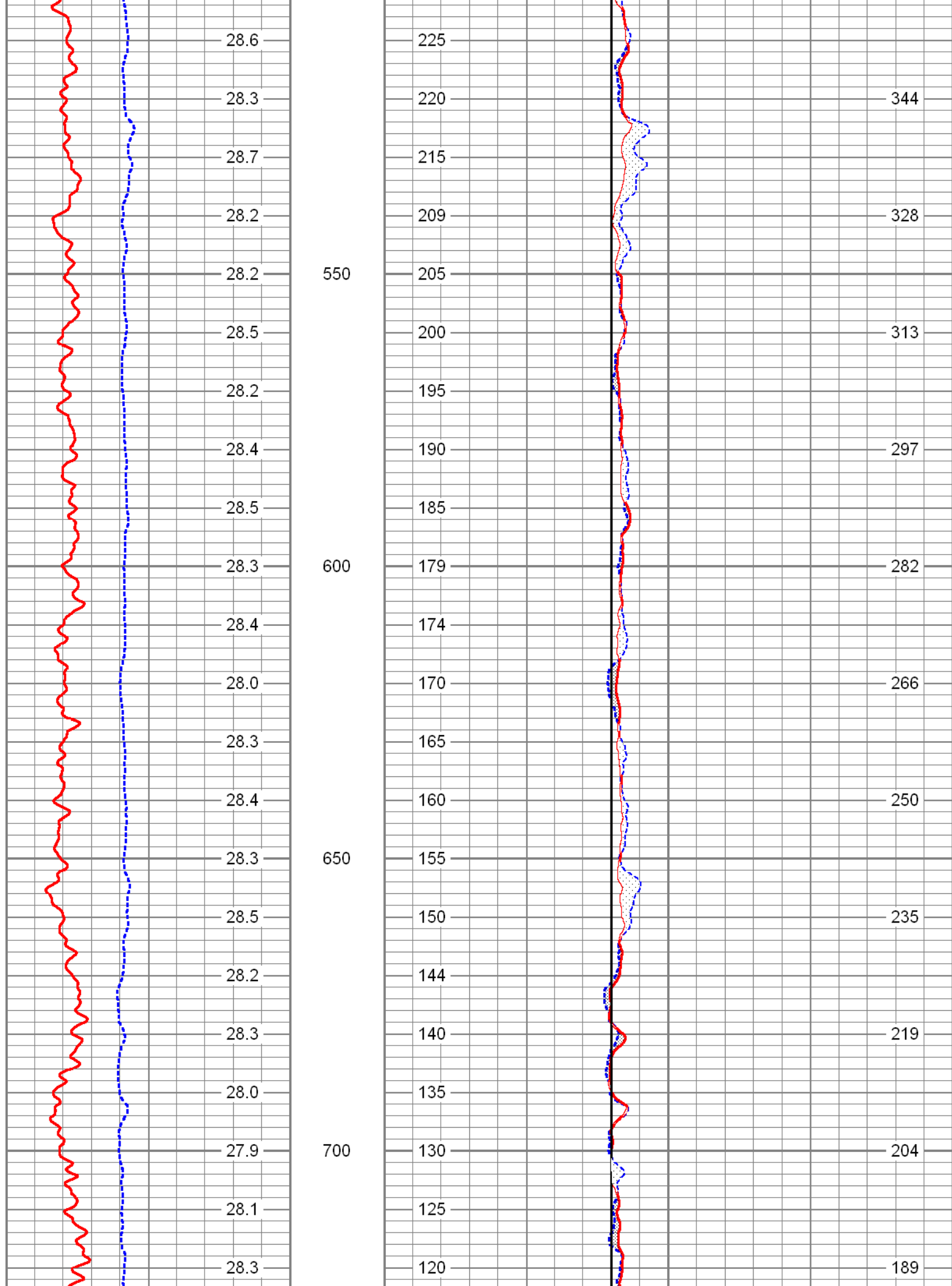
20	Y-Caliper (in)	40
20	X-Caliper (in)	40
20	Borehole ID (in)	40

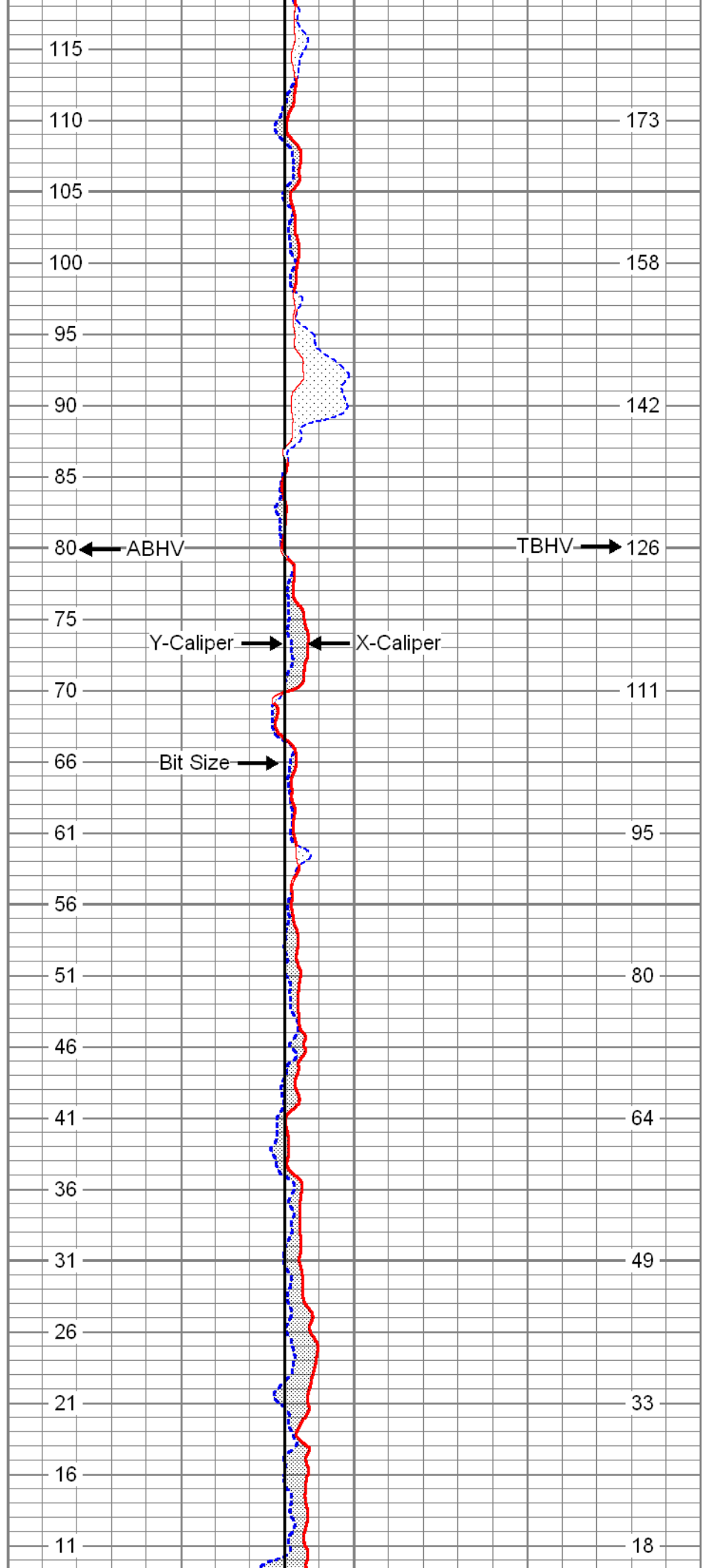
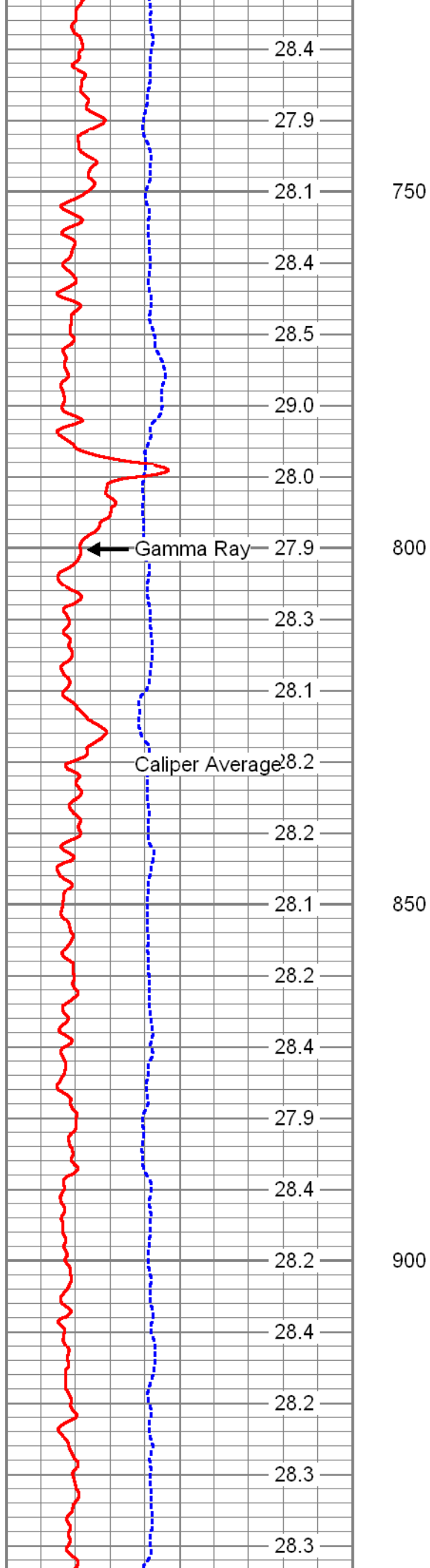
ABHV
(bbl)

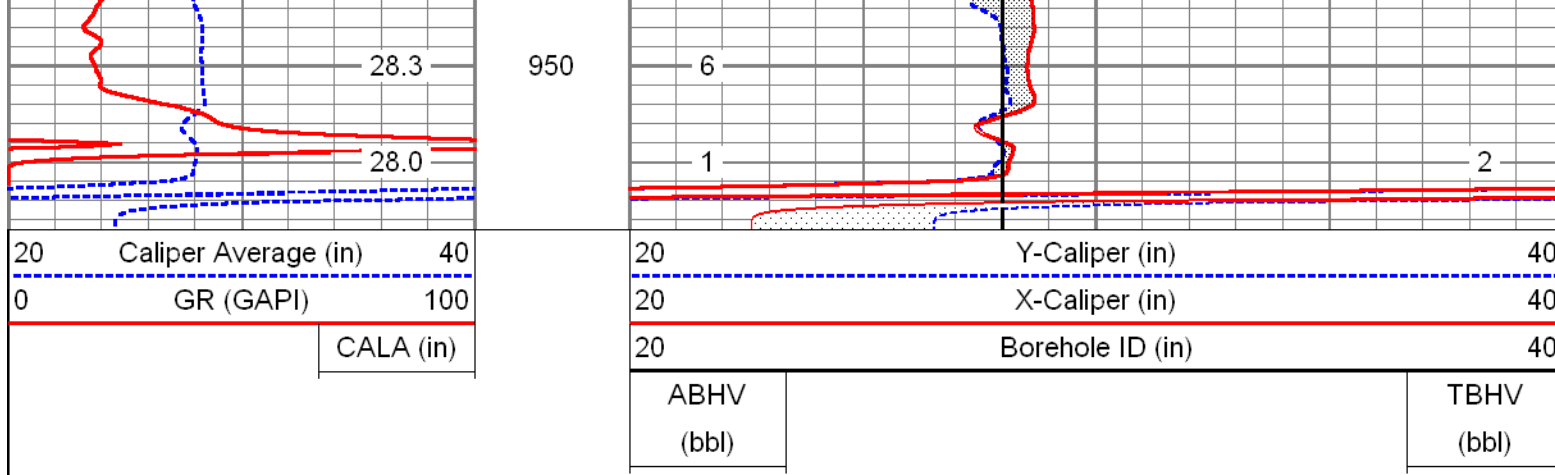
TBHV
(bbl)





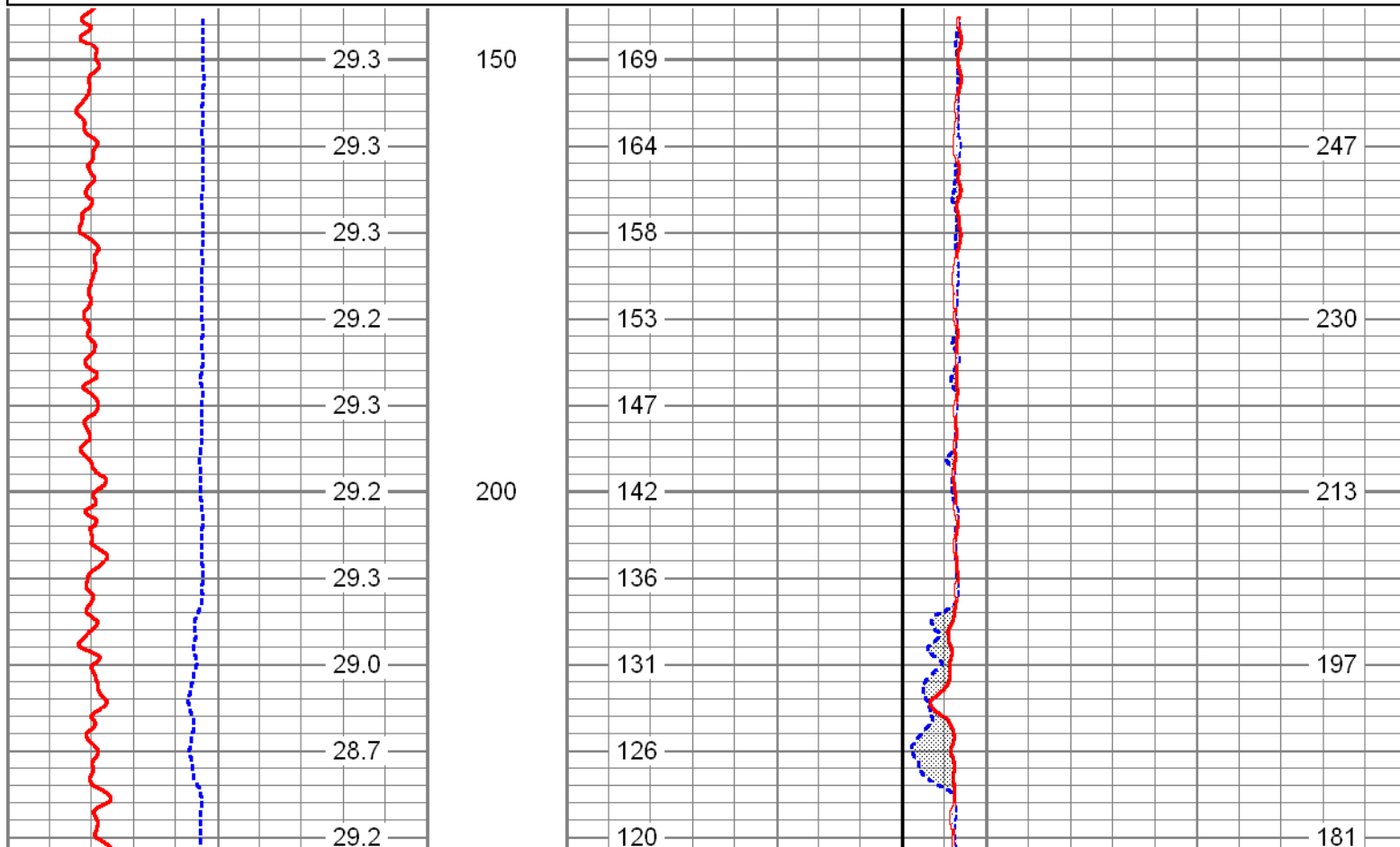
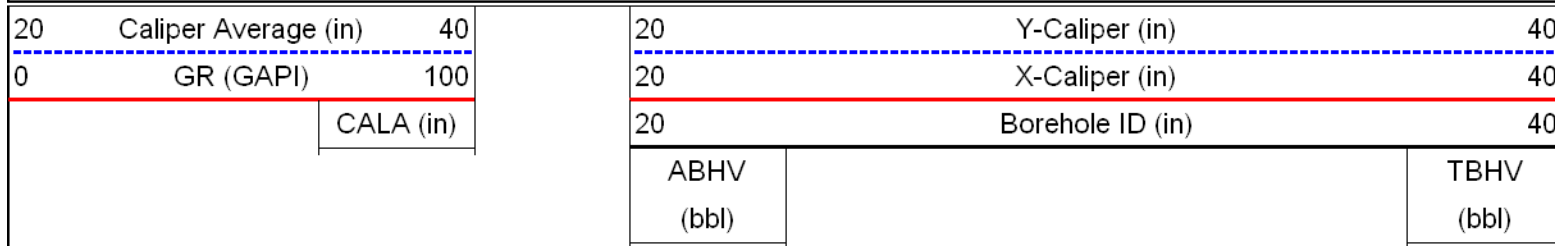


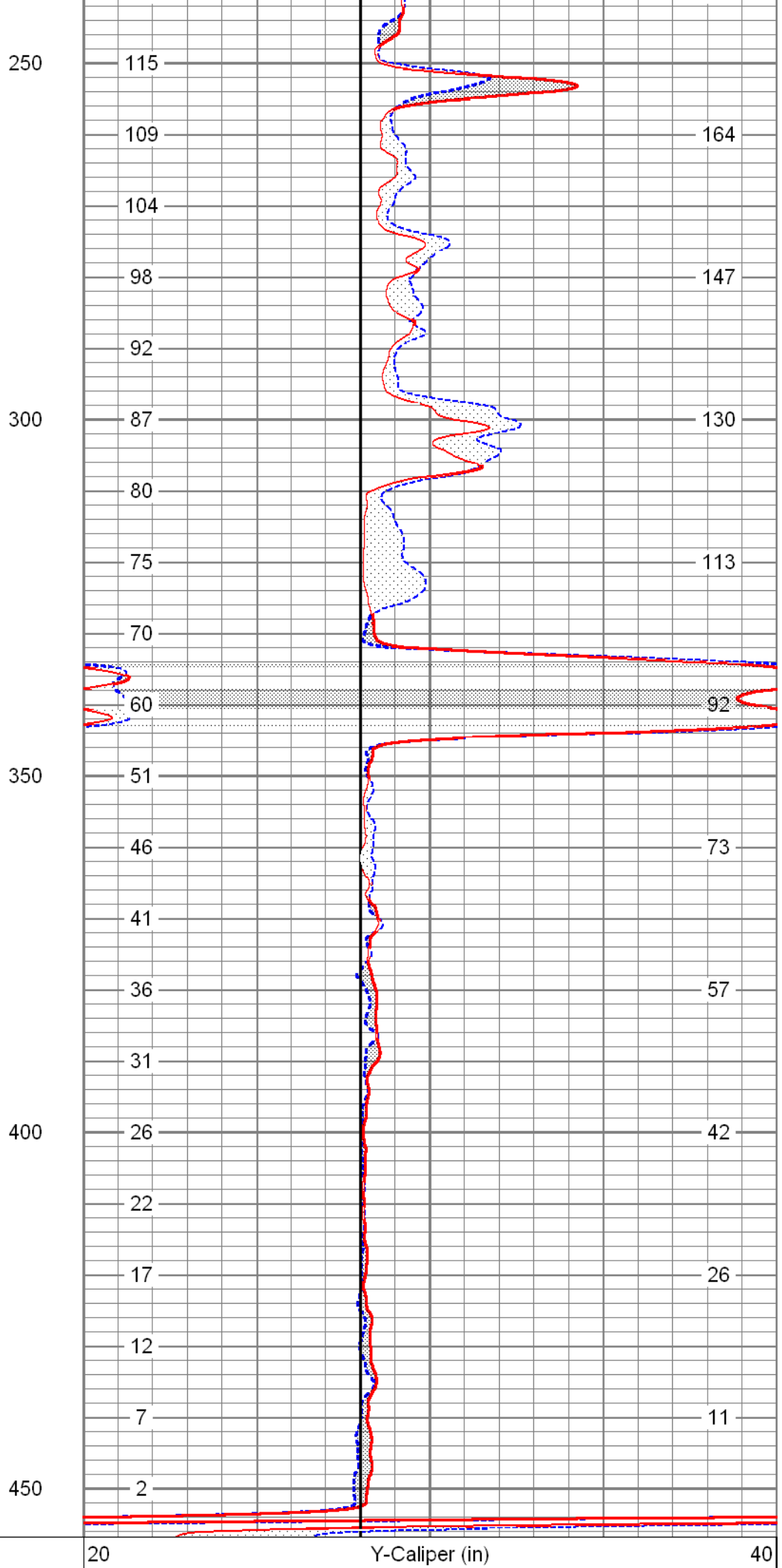
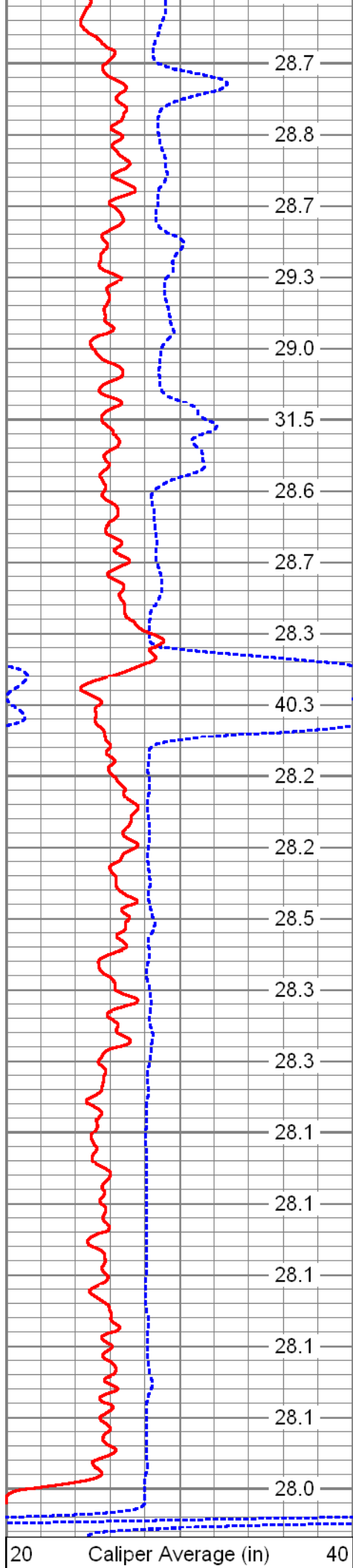




REPEAT PASS


Database File: daviepw2.db
 Dataset Pathname: XYCRP
 Presentation Format: xyc
 Dataset Creation: Wed Sep 14 08:10:57 2011 by Calc Open-Cased 071220
 Charted by: Depth in Feet scaled 1:240





0	GR (GAPI)	100	20	X-Caliper (in)	40
	CALA (in)		20	Borehole ID (in)	40
			ABHV (bbl)		TBHV (bbl)

Calibration Report						
Database File:		daviepw2.db				
Dataset Pathname:		XYCRP				
Dataset Creation:		Wed Sep 14 08:10:57 2011 by Calc Open-Cased 071220				
XY Caliper Calibration Report						
Serial Number/Model:			SDSDEMO-XY			
Performed:			Wed Sep 14 06:53:32 2011			
Ring			X Caliper		Y Caliper	
1:	10	in	395	cps	373.152	cps
2:	20	in	539.243	cps	531.892	cps
3:	29.25	in	715	cps	700	cps
4:	40	in	897.717	cps	901.522	cps
5:		in		cps		cps
6:		in		cps		cps
Gamma Ray Calibration Report						
Serial Number:			SDS			
Tool Model:			SDSGR			
Performed:			Mon Aug 15 19:56:40 2011			
Calibrator Value:			120.0	GAPI		
Background Reading:			117.8	cps		
Calibrator Reading:			585.1	cps		
Sensitivity:			0.2568	GAPI/cps		

Sensor	Offset (ft)	Schematic	Description	Len (ft)	OD (in)	Wt (lb)
GR	7.00		CHD-SDSCHD (SDS) Cable Head	1.00	1.50	5.00
			GR-SDSGR (SDS) GR for Testing	3.00	1.69	20.00

<div data-bbox="89 772 158 831" data-label="Text"> <p>XCAL YCAL</p> </div>	<div data-bbox="237 772 290 831" data-label="Text"> <p>2.00 2.00</p> </div>	<div data-bbox="413 0 627 1159" data-label="Diagram"> </div>	<div data-bbox="758 583 1011 634" data-label="Text"> <p>XYC-XY (SDSDEMO) LGL_XYC_MM</p> </div>	<div data-bbox="1265 583 1318 609" data-label="Text"> <p>6.00</p> </div>	<div data-bbox="1389 583 1442 609" data-label="Text"> <p>3.50</p> </div>	<div data-bbox="1504 583 1580 609" data-label="Text"> <p>100.00</p> </div>
<div data-bbox="513 1199 1134 1314" data-label="Text"> <p>Dataset: daviepw2.db: field/well/run1/XYCRP Total Length: 10.00 ft Total Weight: 125.00 lb O.D. 3.50 in</p> </div>						