



# SOUTH FLORIDA WATER MANAGEMENT DISTRICT

Rev. 1/16

U.S.G.S. Station Name: <b>G-2149</b>	U.S.G.S. Station Number: <b>261403080070801</b>	Agency: <b>SFWMD</b>	Date of Field Work: <b>09/25/19</b>
Party Chief: <b>T. AVERY</b>	Field Book: <b>SFWMD #1</b>	Page(s): <b>58-61</b>	Report Prepared by: <b>DEWBERRY</b>

## SITE SPECIFIC DATA

Site Benchmark: <b>G-2149</b>	Benchmark Elevation(s) (NAVD88): <b>15.32'</b>	Corpscon 6.0.1 Conversion Factor (NAVD88 to NGVD29) <b>+ 1.58 feet</b>
Well Reference Elevation (NAVD88): <b>15.20'</b>	Ground Elevation (NAVD88): <b>15.28'</b>	Pad Elevation (NAVD88): <b>N/A</b>

## GEOGRAPHIC DATA

Section <b>35</b>	Township <b>48 SOUTH</b>	Range <b>42 EAST</b>
Well Latitude: <b>26°14'03.67"N</b>	Well Longitude: <b>80°07'07.95"W</b>	Location Source: <b>AVERAGED FPRN &amp; TRIMBLE VRSNOW RTK</b>
State Plane Coordinates:	Northing (Y) = <b>691850'</b>	Easting (X) = <b>945003'</b>

**Notes:** NAVD88 – North American Vertical Datum of 1988; NGVD29- National Geodetic Vertical Datum of 1929; Corpscon 6.0.1 - A U.S. Army Corps of Engineers Engineering Research and Development Center Topographic Engineering Center Alexandria, Virginia Windows-based program to convert coordinates and elevations between datum's using vertcon05.txt and vertcon05.05 files supplied by the U.S. Army Corps of Engineers South Atlantic Division, Jacksonville FL.

## PICTURES

**Well Site**  
Latitude: 26°14'03.7"  
Longitude: 80°07'08"

Benchmark "G-2149"  
Latitude: 26°14'03.6"  
Longitude: 80°07'07.9"  
NAVD88 EL = 15.32 FEET

Not to scale (GoogleEarth product)



# SOUTH FLORIDA WATER MANAGEMENT DISTRICT

Rev. 1/16

## Well Site and Well Head



Well: 2 1/8" metal well head in 7" well casing  
Reference Point: North edge of metal well head

Reference Point El. =  
**15.20 feet NAVD88**

Distance to water =  
-12.69 feet from reference point  
(09/25/19 at 5:15 PM)



# SOUTH FLORIDA WATER MANAGEMENT DISTRICT

Rev. 1/16

## New Aluminum Tag





# SOUTH FLORIDA WATER MANAGEMENT DISTRICT

Rev. 1/16

## USGS RMs

### LEAD NAIL-NO ID

Latitude: 26° 14' 03.7"  
Longitude: 80° 07' 07.6"  
NAVD88 EL = 15.41 FEET

### LEAD NAIL-NO ID

Latitude: 26° 14' 03.3"  
Longitude: 80° 07' 07.6"  
NAVD88 EL = 15.26 FEET



Well G-2149

### MAG NAIL-NO ID

Latitude: 26° 14' 03.5"  
Longitude: 80° 07' 07.6"  
NAVD88 EL = 15.47 FEET

NOTE: FOUND MONUMENTS ARE NOT USGS REFERENCE MONUMENTS, DID NOT TAKE PHOTOS.



# SOUTH FLORIDA WATER MANAGEMENT DISTRICT

Rev. 1/16

## Site Benchmark



Site BM: G2149



Latitude: 26°14'03.6"  
Longitude: 80°07'07.9"  
NAVD88 EL = 15.32 FEET





# SOUTH FLORIDA WATER MANAGEMENT DISTRICT

Rev. 1/16

## Source Benchmarks



NGS Benchmark "024" (DO2663)



Latitude: 26°13'57.3"  
Longitude: 80°07'31.7"  
NAVD88 EL = 13.75 FEET



NGS Benchmark "U 311" (AD2595)



Latitude: 26°13'54.6"  
Longitude: 80°06'34.5"  
NAVD88 EL = 10.76 FEET



### South Florida Water Management District Benchmark Datasheet

Designation: G-2149 Project Name: USGS Ph 2, BROWARD Type: V State Plane Zone: FL East  
 Stamping: G2149 2019 Field Book Name: W212 Field Book Page: 26  
 Established By: DEWBERRY / WHIDDEN Recovered By: N/A Recovery Date: N/A  
 Surveyor: WILLIAM D. DONLEY Established Date: 09/24/19 Status: New

#### GEOGRAPHIC POSITION INFORMATION

Section: 35 Township: 48 SOUTH Range: 42 EAST  
 County: BROWARD Quadrangle: POMPAÑO BEACH Quad Index: 1801 NGS Source BM(s): U 311 / 024  
 NAD83 Adj. Year: 2011 Vertical Datum: NAVD1988 Horizontal Datum: NAD1983 NGS PID(s): AD2595 / DO2663  
 NAVD88 Elevation (feet): 15.32 NGVD29 Elevation (feet): 16.895 2022 Elevation: N/A NGS NAVD88 Elev (ft): 10.76 / 13.75  
 NAVD88 Class: N/A NGVD29 Class: N/A Other Elevation: N/A NGS NAVD88 Elev (m): 3.279 / 4.19  
 NAVD88 Order: 3 NGVD29 Order: N/A Other Elevation Type: N/A NGS 2022 Elev (ft): N/A

CORPSCON 6.0.1 CONVERSION FACTOR (NAVD88 TO NGVD29): (A U.S. Army Corps of Engineers Engineering Research and Development Center Topographic Engineering Center Alexandria, Virginia Windows-based program to convert coordinates and elevations between datum's using vertcon05.txt and vertcon05.05 files supplied by the U.S. Army Corps of Engineers South Atlantic Division, Jacksonville FL.)

Vertical Datum Offset: + 1.58 Actual NGS Elevation or ngvd29.txt file: N/A OPUS Ortho Height: N/A  
 Northing (Y) (feet): 691847.0 Easting (X) (feet): 945010.7 Source of Latitude & Longitude: AVERAGED FPRN & TRIMBLE VRSNOW RTK  
 Latitude: 26 14 3.63 Longitude: 80 7 7.86  
 DD" MM" SS" DD" MM" SS"  
 Latitude (Decimal Degrees): 26.234342 Longitude (Decimal Degrees): -80.118850

#### RECOVERY DATA

How to Reach: **1. FROM W ATLANTIC BLVD, HEAD NORTH ON N DIXIE HWY FOR 0.2 MI**  
**2. TURN RIGHT ONTO NE 3RD ST, CONTINUE 0.4 MI TO THE MARK ON THE LEFT,**  
**LOCATED APPROXIMATELY 14.5 FEET NORTH OF CENTERLINE OF NE 3RD ST AND 51 FEET WEST OF CENTERLINE OF NE 5TH AVENUE.**

Description/Notes: **2" ALUMINUM SFWMD DISK SET IN A POURED IN PLACE CONCRETE MONUMENT**

Notable Landmarks: **301 NE 5 AVE, POMPAÑO BEACH, FL 33060**

Other Source Benchmarks: **NGS "N 400" (AD8001)**

#### PICTURES

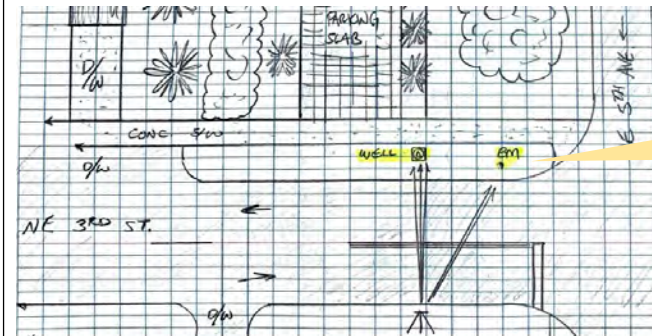
Aerial View of Overall Site



NOT TO SCALE. AERIAL FROM GOOGLE EARTH.

#### PICTURES

Site Sketch





"024" Benchmark Datasheet (1 of 2)

The NGS Data Sheet

See file [dsdata.pdf](#) for more information about the datasheet.

PROGRAM = datasheet95, VERSION = 8.12.5.2

1 National Geodetic Survey, Retrieval Date = MAY 20, 2019

D02663 \*\*\*\*\*

D02663 DESIGNATION - 024

D02663 PID - D02663

D02663 STATE/COUNTY- FL/BROWARD

D02663 COUNTRY - US

D02663 USGS QUAD - FORT LAUDERDALE NORTH (1995)

D02663

D02663 \*CURRENT SURVEY CONTROL

D02663

D02663\* NAD 83(1986) POSITION- 26 13 57. (N) 080 07 31. (W) SCALED

D02663\* [NAVD 88](#) ORTHO HEIGHT - 4.190 (meters) 13.75 (feet) ADJUSTED

D02663

D02663 GEOID HEIGHT - -25.786 (meters) GEOID12B

D02663 DYNAMIC HEIGHT - 4.184 (meters) 13.73 (feet) COMP

D02663 MODELED GRAVITY - 979,070.7 (mgal) NAVD 88

D02663

D02663 VERT ORDER - SECOND CLASS II

D02663

D02663.The horizontal coordinates were scaled from a topographic map and have  
D02663.an estimated accuracy of +/- 6 seconds.

D02663.

D02663.The orthometric height was determined by differential leveling and  
D02663.adjusted by the NATIONAL GEODETIC SURVEY

D02663.in December 2012.

D02663

D02663.Significant digits in the geoid height do not necessarily reflect accuracy.  
D02663.GEOID12B height accuracy estimate available [here](#).

D02663

D02663.[Photographs](#) are available for this station.

D02663

D02663.The dynamic height is computed by dividing the NAVD 88  
D02663.geopotential number by the normal gravity value computed on the  
D02663.Geodetic Reference System of 1980 (GRS 80) ellipsoid at 45  
D02663.degrees latitude (g = 980.6199 gals.).

D02663

D02663.The modeled gravity was interpolated from observed gravity values.

D02663

D02663;  
D02663;SPC FL E - North East Units Estimated Accuracy  
210,670. 287,400. MT (+/- 180 meters Scaled)

D02663

D02663\_U.S. NATIONAL GRID SPATIAL ADDRESS: 17RNK873017(NAD 83)

D02663

D02663 SUPERSEDED SURVEY CONTROL

D02663

D02663.No superseded survey control is available for this station.

D02663

D02663\_MARKER: DB = BENCH MARK DISK

D02663\_SETTING: 7 = SET IN TOP OF CONCRETE MONUMENT

D02663\_STAMPING: 024 2011

D02663\_MARK LOGO: FL2570

D02663\_PROJECTION: RECESSED 5 CENTIMETERS

D02663\_MAGNETIC: R = STEEL ROD IMBEDDED IN MONUMENT

D02663\_STABILITY: C = MAY HOLD, BUT OF TYPE COMMONLY SUBJECT TO

D02663+STABILITY: SURFACE MOTION





# SOUTH FLORIDA WATER MANAGEMENT DISTRICT

Rev. 1/16

## "024" Benchmark Datasheet (2 of 2)

D02663\_SATELLITE: THE SITE LOCATION WAS REPORTED AS SUITABLE FOR

D02663+SATELLITE: SATELLITE OBSERVATIONS - July 17, 2014

D02663

D02663	HISTORY	- Date	Condition	Report By
--------	---------	--------	-----------	-----------

D02663	HISTORY	- 20120103	MONUMENTED	STONER
--------	---------	------------	------------	--------

D02663	HISTORY	- 20140717	GOOD	GEOCAC
--------	---------	------------	------	--------

D02663

D02663 STATION DESCRIPTION

D02663

D02663'DESCRIBED BY STONER AND ASSOCIATES INC 2012 (DWS)

D02663'THE MARK IS ABOUT 7.7 MI (12.4 KM) NORTH OF FORT LAUDERDALE, 7.4 MI

D02663'(11.9 KM) SOUTHEAST OF WEST DIXIE BEND, IN POMPANO BEACH, IN SECTION

D02663'35, TOWNSHIP 48 SOUTH, RANGE 42 EAST. OWNERSHIP IS THE CITY OF

D02663'POMPANO BEACH.

D02663'

D02663'TO REACH THE MARK FROM THE INTERSECTION OF EAST ATLANTIC BOULEVARD AND

D02663'NORTH DIXIE HIGHWAY IN POMPANO BEACH, GO EAST ON EAST ATLANTIC

D02663'BOULEVARD FOR 0.1 MI (0.2 KM) TO THE INTERSECTION OF FIRST AVENUE.

D02663'TURN LEFT ON NORTHEAST FIRST AVENUE AND GO NORTH FOR 0.5 MI (0.8 KM)

D02663'TO THE INTERSECTION OF NORTHEAST FIRST STREET. TURN LEFT ON NORTHEAST

D02663'FIRST STREET AND GO WEST FOR 0.5 MI (0.8 KM) TO A 90 DEGREE CURVE

D02663'RIGHT TO NORTH FLAGLER AVENUE. TURN RIGHT ON NORTH FLAGLER AVENUE AND

D02663'GO NORTH FOR 50.0 FT (15.2 M) TO THE MARK ON THE LEFT, SET IN THE TOP

D02663'OF A 10-INCH (25 CM) ROUND CONCRETE MONUMENT RECESSED 0.2 FT (6 CM)

D02663'BELOW THE LEVEL OF THE GROUND AND 0.5 FT (15 CM) ABOVE THE LEVEL OF

D02663'NORTH FLAGLER AVENUE.

D02663'

D02663'LOCATED 48.0 FT (14.6 M) WEST OF THE CENTERLINE OF NORTH FLAGLER

D02663'AVENUE, 45.0 FT (13.7 M) NORTH OF THE CENTERLINE OF NORTHEAST FIRST

D02663'STREET, 21.8 FT (6.6 M) EAST OF THE EAST RAIL OF THE F.E.C. RAIL

D02663'ROAD, 19.7 FT (6.0 M) NORTHWEST OF A DRAINAGE CATCH BASIN, 8.9 FT (2.7

D02663'M) WEST OF THE WEST EDGE OF THE PAVEMENT OF THE PARKING LOT ALONG THE

D02663'WEST SIDE OF NORTH FLAGLER AVENUE, 5.6 FT (1.7 M) SOUTHEAST OF A SIGN

D02663'POLE AND 1.0 FT (0.3 M) EAST OF A CARSONITE WITNESS POST.

D02663'

D02663'NOTE REBAR ROD IS IMBEDDED IN THE MONUMENT.

D02663

D02663 STATION RECOVERY (2014)

D02663

D02663'RECOVERY NOTE BY GEOCACHING 2014 (KEN)

D02663'RECOVERED IN GOOD CONDITION.

\*\*\* retrieval complete.

Elapsed Time = 00:00:04



“U 311” Benchmark Datasheet (1 of 3)

The NGS Data Sheet

See file [dsdata.pdf](#) for more information about the datasheet.

PROGRAM = datasheet95, VERSION = 8.12.5.2  
1 National Geodetic Survey, Retrieval Date = MAY 20, 2019  
AD2595 \*\*\*\*\*  
AD2595 DESIGNATION - U 311  
AD2595 PID - AD2595  
AD2595 STATE/COUNTY- FL/BROWARD  
AD2595 COUNTRY - US  
AD2595 USGS QUAD - POMPAÑO BEACH (1983)  
AD2595  
AD2595 \*CURRENT SURVEY CONTROL  
AD2595  
AD2595\* NAD 83(1986) POSITION- 26 13 54.7 (N) 080 06 34.6 (W) HD\_HELD2  
AD2595\* [NAVD 88](#) ORTHO HEIGHT - 3.279 (meters) 10.76 (feet) ADJUSTED  
AD2595  
AD2595 GEOID HEIGHT - -25.836 (meters) GEOID12B  
AD2595 DYNAMIC HEIGHT - 3.274 (meters) 10.74 (feet) COMP  
AD2595 MODELED GRAVITY - 979,070.3 (mgal) NAVD 88  
AD2595  
AD2595 VERT ORDER - SECOND CLASS 0  
AD2595  
AD2595.The horizontal coordinates were established by autonomous hand held GPS  
AD2595.observations and have an estimated accuracy of +/- 10 meters.  
AD2595.  
AD2595.The orthometric height was determined by differential leveling and  
AD2595.adjusted by the NATIONAL GEODETIC SURVEY  
AD2595.in June 1991.  
AD2595  
AD2595.Significant digits in the geoid height do not necessarily reflect accuracy.  
AD2595.GEOID12B height accuracy estimate available [here](#).  
AD2595  
AD2595.[Photographs](#) are available for this station.  
AD2595  
AD2595.The dynamic height is computed by dividing the NAVD 88  
AD2595.geopotential number by the normal gravity value computed on the  
AD2595.Geodetic Reference System of 1980 (GRS 80) ellipsoid at 45  
AD2595.degrees latitude (g = 980.6199 gals.).  
AD2595  
AD2595.The modeled gravity was interpolated from observed gravity values.  
AD2595  
AD2595;  
AD2595;SPC FL E - North East Units Estimated Accuracy  
AD2595; - 210,607. 288,965. MT (+/- 10 meters HH2 GPS)  
AD2595  
AD2595\_U.S. NATIONAL GRID SPATIAL ADDRESS: 17RNK8893401666(NAD 83)  
AD2595  
AD2595 SUPERSEDED SURVEY CONTROL  
AD2595  
AD2595 NGVD 29 (??/??/92) 3.761 (m) 12.34 (f) ADJ UNCH 2 0  
AD2595  
AD2595.Superseded values are not recommended for survey control.  
AD2595  
AD2595.NGS no longer adjusts projects to the NAD 27 or NGVD 29 datums.  
AD2595.See file [dsdata.pdf](#) to determine how the superseded data were derived.  
AD2595  
AD2595\_MARKER: DB = BENCH MARK DISK  
AD2595\_SETTING: 7 = SET IN TOP OF CONCRETE MONUMENT  
AD2595\_STAMPING: U 311 1970



# SOUTH FLORIDA WATER MANAGEMENT DISTRICT

Rev. 1/16

## "U 311" Benchmark Datasheet (2 of 3)

AD2595\_MARK LOGO: CGS  
 AD2595\_PROJECTION: FLUSH  
 AD2595\_STABILITY: C = MAY HOLD, BUT OF TYPE COMMONLY SUBJECT TO  
 AD2595+STABILITY: SURFACE MOTION  
 AD2595\_SATELLITE: THE SITE LOCATION WAS REPORTED AS SUITABLE FOR  
 AD2595+SATELLITE: SATELLITE OBSERVATIONS - January 29, 2016

AD2595	HISTORY	- Date	Condition	Report By
AD2595	HISTORY	- 1970	MONUMENTED	NGS
AD2595	HISTORY	- 1973	GOOD	NGS
AD2595	HISTORY	- 1983	GOOD	LOCSUR
AD2595	HISTORY	- 1987	GOOD	USPSQD
AD2595	HISTORY	- 1988	GOOD	USPSQD
AD2595	HISTORY	- 1989	GOOD	USPSQD
AD2595	HISTORY	- 1990	GOOD	USPSQD
AD2595	HISTORY	- 19910615	GOOD	USPSQD
AD2595	HISTORY	- 19951230	MARK NOT FOUND	USPSQD
AD2595	HISTORY	- 19980927	GOOD	USPSQD
AD2595	HISTORY	- 20021121	GOOD	USPSQD
AD2595	HISTORY	- 20160129	GOOD	GEOCAC

AD2595

### STATION DESCRIPTION

AD2595

AD2595'DESCRIBED BY NATIONAL GEODETIC SURVEY 1970  
 AD2595'AT POMPANO BEACH.  
 AD2595'AT POMPANO BEACH, ABOUT 0.4 MILE WEST ALONG STATE HIGHWAY 814  
 AD2595'(ATLANTIC BLVD) FROM THE INTERSECTION OF U.S. HIGHWAY 1, 31 FEET  
 AD2595'NORTH OF THE CENTER LINE OF THE WESTBOUND LANE OF THE HIGHWAY, 26  
 AD2595'FEET WEST OF THE APPROXIMATE CENTER LINE OF NE 14 TH AVENUE, 2  
 AD2595'FEET NORTH OF THE NORTH EDGE OF A CONCRETE SIDEWALK, 2 FEET  
 AD2595'NORTHWEST OF A STOP SIGN, ABOUT LEVEL WITH THE HIGHWAY AND SET  
 AD2595'IN THE TOP OF A CONCRETE POST FLUSH WITH THE GROUND.

AD2595

### STATION RECOVERY (1973)

AD2595

AD2595'RECOVERY NOTE BY NATIONAL GEODETIC SURVEY 1973  
 AD2595'RECOVERED IN GOOD CONDITION.

AD2595

### STATION RECOVERY (1983)

AD2595

AD2595'RECOVERY NOTE BY LOCAL SURVEYOR (INDIVIDUAL OR FIRM) 1983  
 AD2595'12.7 FEET EAST OF THE SOUTHEAST CORNER OF BUILDING 10.5 FEET NORTH OF  
 AD2595'NORTH CURB LINE EXTENDED 2 FEET NORTH OF A STOP SIGN, 2 FEET NORTH OF  
 AD2595'THE NORTHEdge OF A CONCRETE SIDEWALK.

AD2595

### STATION RECOVERY (1987)

AD2595

AD2595'RECOVERY NOTE BY US POWER SQUADRON 1987 (JHH)  
 AD2595'RECOVERED IN GOOD CONDITION.

AD2595

### STATION RECOVERY (1988)

AD2595

AD2595'RECOVERY NOTE BY US POWER SQUADRON 1988 (CEP)  
 AD2595'RECOVERED IN GOOD CONDITION.

AD2595

### STATION RECOVERY (1989)

AD2595

AD2595'RECOVERY NOTE BY US POWER SQUADRON 1989 (FEC)  
 AD2595'RECOVERED IN GOOD CONDITION.

AD2595

### STATION RECOVERY (1990)

AD2595

AD2595'RECOVERY NOTE BY US POWER SQUADRON 1990 (JHH)  
 AD2595'RECOVERED IN GOOD CONDITION.

AD2595



# SOUTH FLORIDA WATER MANAGEMENT DISTRICT

Rev. 1/16

## "U 311" Benchmark Datasheet (3 of 3)

AD2595 STATION RECOVERY (1991)  
AD2595  
AD2595'RECOVERY NOTE BY US POWER SQUADRON 1991 (JHH)  
AD2595'RECOVERED IN GOOD CONDITION.  
AD2595  
AD2595 STATION RECOVERY (1995)  
AD2595  
AD2595'RECOVERY NOTE BY US POWER SQUADRON 1995  
AD2595'MARK NOT FOUND.  
AD2595  
AD2595 STATION RECOVERY (1998)  
AD2595  
AD2595'RECOVERY NOTE BY US POWER SQUADRON 1998  
AD2595'RECOVERED IN GOOD CONDITION.  
AD2595  
AD2595 STATION RECOVERY (2002)  
AD2595  
AD2595'RECOVERY NOTE BY US POWER SQUADRON 2002 (RT)  
AD2595'RECOVERED IN GOOD CONDITION.  
AD2595  
AD2595 STATION RECOVERY (2016)  
AD2595  
AD2595'RECOVERY NOTE BY GEOCACHING 2016 (KEN)  
AD2595'RECOVERED IN GOOD CONDITION.

\*\*\* retrieval complete.  
Elapsed Time = 00:00:04



# SOUTH FLORIDA WATER MANAGEMENT DISTRICT

Rev. 1/16

## Dewberry Field Notes (1 of 4)

SPECTRA SP-80      S.F.W.M.D.      09/23/19  
 S/N: 1165      U.S.G.S. WELLS & BMS  
 TRIMBLE NET      JOB #: S0099999  
 HT: 6.562      WELL SITE: G-2149

TASK: OBTAIN HORIZONTAL LOCATIONS OF MONITORING POINT & ALL REFERENCE MONUMENTATION.

PT#	(N) ELEV	(E) ELEV	(Z) ELEV	PT#	DESCRIPTION
S/O	7	0.034	0.055	5032	CHEV. BM @ 2149
* LOCATED PT #'S 12043 & 12044					
S/O	7	0.009	-0.020	5033	CHEV. BM @ 2149

**PT# DESCRIPTION**

- 12043 N. EDGE OF 2 1/8" METAL WELL HEAD
- 12044 N. EDGE OF 7" METAL WELL CASING

TASK: MEASURE & RECORD DISTANCE TO WATERLINE FROM MONITORING POINT

MEASUREMENT: 12.69'; AS MEASURED FROM  
 N. EDGE OF 2 1/8" METAL WELL HEAD

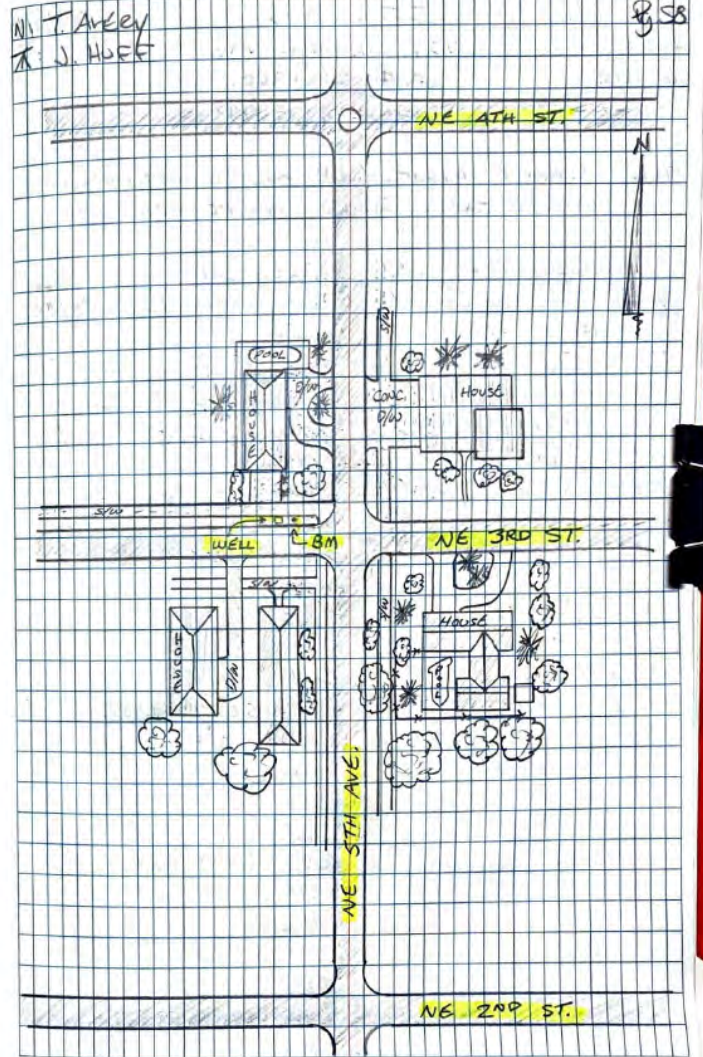
Time: 5:15 PM

THIS WELL IS LOCATED ON THE NORTHERLY R/W OF NORTH EAST 3RD STREET, APPROXIMATELY 8' 1/2" FROM THE NORTH EDGE OF PAVEMENT, BETWEEN THE EDGE OF PAVEMENT & CONCRETE SIDEWALK.

WELL @ 287° 26' 32"  
 61' 1/2"

NE 3RD ST.

NOT TO SCALE





# SOUTH FLORIDA WATER MANAGEMENT DISTRICT

Rev. 1/16

## Dewberry Field Notes (2 of 4)

Tolson  
AT-CR  
S/N 142A

S F W. M. D.  
USGS WELLS & BMS  
JOB # 50099949  
WELL SITE: G-219A

09/25/19

TASK: ELEVATE MONITORING POINT, REFERENCE MONUMENTATION & GROUND AT WELL SITE

BACKSIGHT (+)		FORESIGHT (-)		ADJ
STA ID	RD & MEAN	RD & MEAN	ELEV.	ELEV.
	5.165	5.185		<del>100.00</del> 15.32
Bm	5.01	5.015	5.015	99.995 <del>15.288</del>
	4.855	4.845		15.315
	31'/31'	34'/65'		
"		5.195		
	20.33	5.025	5.025	99.985 <del>15.275</del>
		4.855		15.305
		34'/65'		
"		5.19		
	20.33	5.025	5.0267	99.9883 <del>15.275</del>
		4.865		15.305
		32.5'/63.5'		
"		5.15		
	20.33	4.99	4.9917	100.0183 <del>15.308</del>
		4.835		15.338
		31.5'/62.5'		
"		5.225		
	20.33	5.045	5.0483	99.917 <del>15.252</del>
		4.875		15.282
		35'/66'		

15.32

N: T. AVERY  
K: J. HOFF

~~15.32~~ (WHIDDEN)  
(NAVD 88)

ELEVATION	DESCRIPTION
100.00	ALUMINUM DISC FOUND IN CAST CONCRETE @ GRADE, ON NORTH R/W OF NE 3RD STREET NEAR INTERSECTION WITH NE 5TH AVENUE, LOCATED BETWEEN EP & SIDEWALK.
	FORESIGHT (-)
	DESCRIPTION
	NW CORNER OF CONC. SLAB AROUND WELL CASING
	NE CORNER OF CONC. SLAB AROUND WELL CASING
	SE CORNER OF CONC. SLAB AROUND WELL CASING
	SW CORNER OF CONC. SLAB AROUND WELL CASING
	GROUND STAKE (NORTH OF CONC. SLAB AROUND WELL CASING)



# SOUTH FLORIDA WATER MANAGEMENT DISTRICT

Rev. 1/16

## Dewberry Field Notes (3 of 4)

Tolcan S.F.W.M.D. cjes/19  
 AT-G2 USGS WELLS E. Bms  
 S/N: 1439 Job #: 5002-9949  
 WELL SITE: G-2199

TASK: CONTINUE ELEVATING POINTS OF INTEREST

BACKSIGHT (+)		ADJ.		FORESIGHT (-)		ADJ.
STA ID	RDS	MEAN	ELEV	RDS	MEAN	ELEV
			5.305			
Bm		<del>105.01</del>	5.14	5.1383	<del>99.877</del>	<del>15.162</del>
		20.33	4.97			15.192
			33.5' / 64.5'			

			5.08			
Bm		<del>105.01</del>	4.91	4.9117	<del>100.095</del>	<del>15.388</del>
		20.33	4.745			15.418
			33.5' / 64.5'			

\* BREAK SET-UP

	5.86		5.445			
MP	5.195	5.1933	<del>105.2017</del>	5.296	5.2917	<del>100.000</del>
	5.025		20.612	5.140		15.319
	33.5' / 98'			30.5' / 128.5'		

\* END LEVEL LOOP

\* NO REF. MONUMENTATION FOUND ON SITE

N: TAKEY  
 T: D. HUFF

FORESIGHT (-)  
 DESCRIPTION

NORTH EDGE OF 2" PVC PIPE

NORTH EDGE OF METAL CURBING (MEASURING POINT)

BACK @ STARTING POINT (SITE Bm)

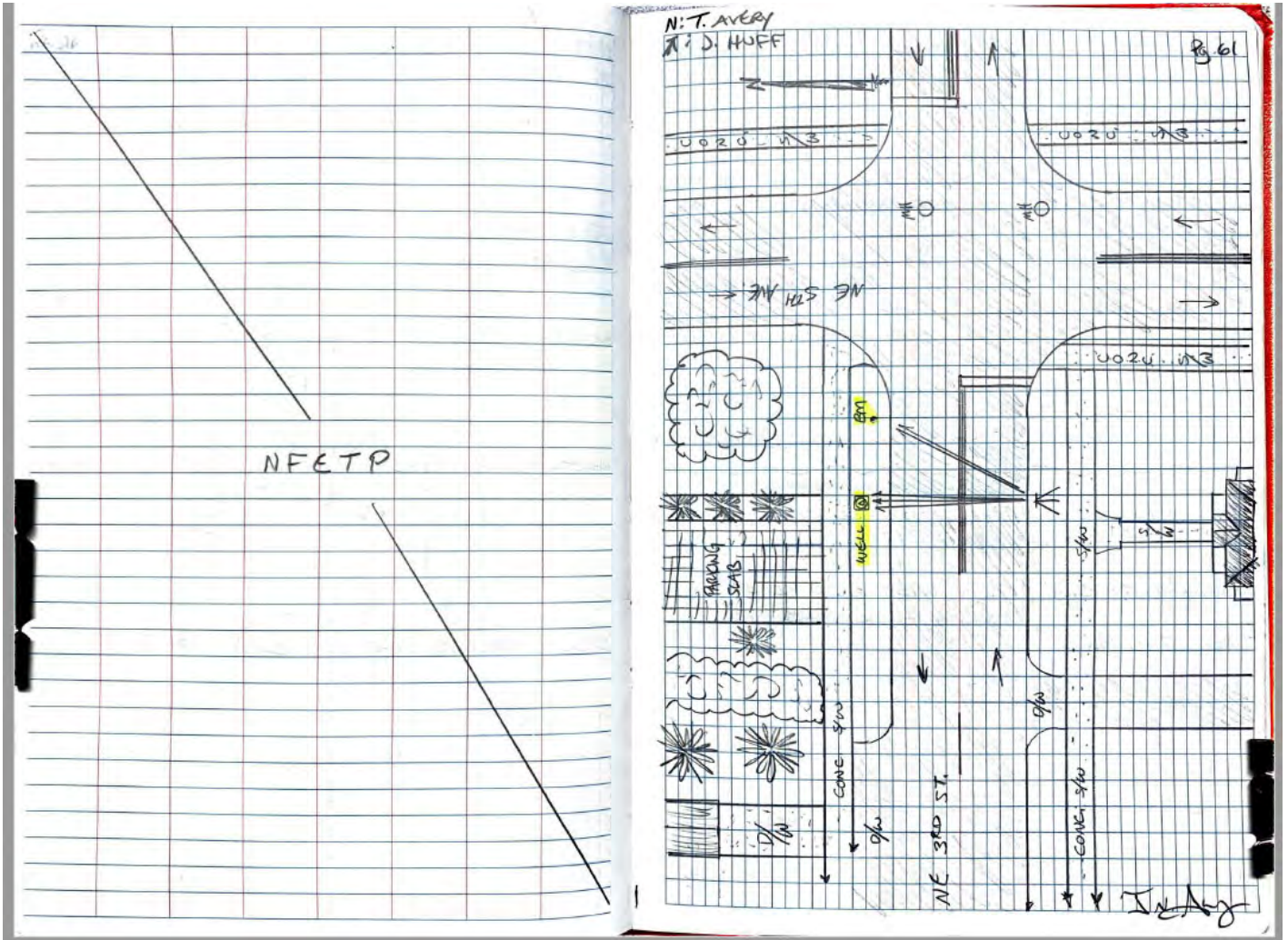
CHECK IN = + 0.002 ✓



# SOUTH FLORIDA WATER MANAGEMENT DISTRICT

Rev. 1/16

## Dewberry Field Notes (4 of 4)







# SOUTH FLORIDA WATER MANAGEMENT DISTRICT

Rev. 1/16

## Whidden Field Notes (1 OF 2)

STA	T	M/I	EL	DATE
7712	5.418	18.379	18.559	09/21/14
7713	5.167	20.025	18.791	
7714	5.081	18.807	17.927	
7715	4.267	16.850	13.865	
7716	5.420	16.878	17.312	
7717	6.091	16.857		

LOWE'S DATA SHEET  
 READING: 180.3 IN. 461519589  
 180.3 IN. 022826604

STA	T	M/I	EL	DATE
7718	5.916	15.502	15.502	02/19
7719	5.833	14.801	14.801	
7720	5.190	15.429	15.429	
7721	6.462	18.301	18.301	
7722	4.787	15.703	15.703	
7723	5.246	18.247	18.247	
7724	5.417	15.090	15.090	
7725	4.720	15.294	15.294	
7726	4.801	16.173	16.173	
7727	6.705	18.001	18.001	
7728	5.187	17.194	17.194	

